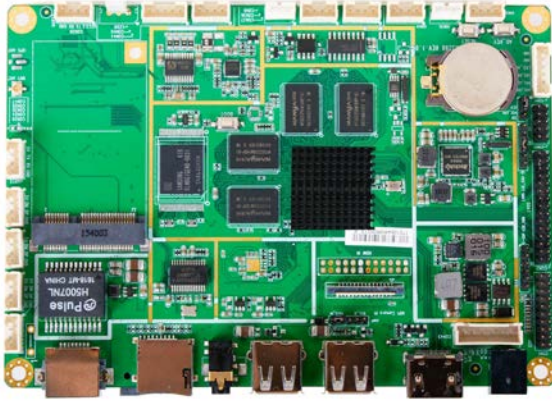


ARM-R3288 Series

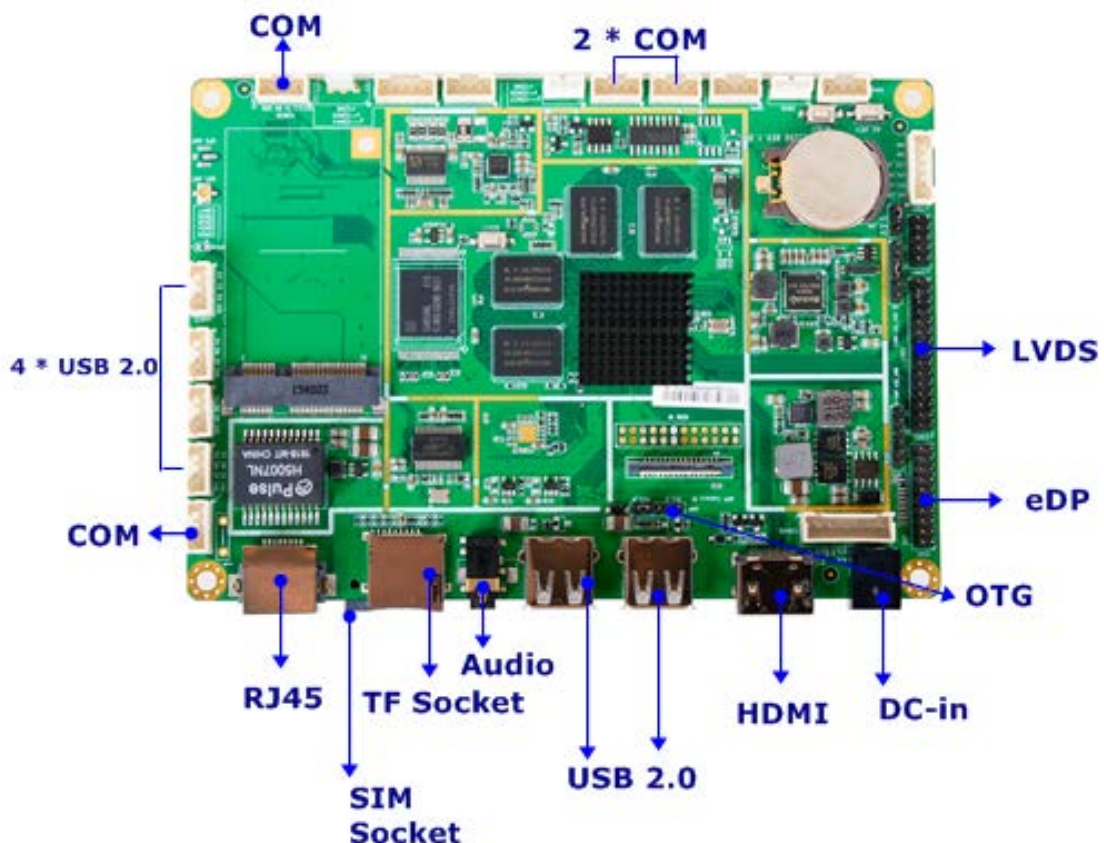
Rock chip® ARM Cortex A17 RK3288, 1 * Mini PCI-E, 1 * TF card socket, 1 * SIM socket, HDMI/eDP/LVDS, 3G/4G/LTE, Bluetooth, Android 5.1



1. Rock chip® ARM Cortex A17 RK3288 Quad-core 1.8GHz
2. Onboard 1333 /2GB DDR3L DRAM Max. 4GB
3. Onboard 8G Flash ROM Max 32GB
4. 1 * Realtek GbE LAN
5. 4 * COM
6. 6 * USB2.0, 1 * OTG
7. 1 * HDMI, 1 * eDP, 1 * LVDS
8. 1 * TF card socket, 1 * SIM socket
9. Support 3G/4G/LTE, Bluetooth
10. Support Android 5.1



Internal Diagram



Specifications

Form Factor	
Dimensions	- 3.5" SBC (102 * 146mm)
Processor System	
CPU	- Rock chip® ARM Cortex A17 RK3288 1.8GHz
Core Number	- Quad-core
Max Speed	- 1.8G
L2 Cache	- 0
Chipset	- Rock chip® ARM Cortex A17 RK3288 SoC
BIOS	- 0
PMU	- Rock chip® RK808-B
Expansion Slot	
PCI	- 0
Mini-PCIe	- 1 (full size , by USB interface)
mSATA	- 0
PCIe	- 0
M.2	- 0
CFast Card Socket	- 0
TF Card Socket	- 1
SIM Card Holder	- 1
Memory	
Technology	- Onboard DDR3L 1333MHz 2GB
Max.	- 4GB
Socket	-
Flash Rom	- 8GB (Max 32GB)
Graphics	
Controller	- (by CPU)
VRAM	- Shared Memory
VGA	- 0
LVDS	- 1 * 24 bit Dual Channel connector
eDP	- 1
HDMI	- 1 (2.0)
DVI-D	- 0
DisplayPort	- 0
MultiDisplay	- Dual Display
Ethernet	
Ethernet	- 10/100/1000 Mbps

Controller	- 1 * Realtek RTL8211E-VB Gigabit LAN
Connector	- 1 * RJ 45
Audio	
CODEC	- HD Audio : ES8316
Channel	- 2 Channel
Special Features	
WIFI	- 802.11 b/g/n,2.4G
WIFI Chip	-RTL8723BS
Bluetooth	- BT-V4.0 BLE
3G	- WCDMA, EVDO,CDMA,GSM (Option)
LTE	- LTE-TDD/LTE-FDD/TD-SCDMA/EDGE/GPRS/GSM (Option)
OS	- Android 5.1
Rear I/O	
VGA	- 0
DVI-D	- 0
HDMI	- 1
DisplayPort	- 0
Ethernet	- 1
USB	- 2 (2 * USB 2.0)
Audio	- 1 (Line-Out, MIC)
Serial	- 0
SIM Socket	- 1
TF Card Socket	- 1
DC-input	- 1
Internal Connector	
USB	- 4 (4 * USB 2.0)
PS/2	- 0
LVDS / inverter	- 1 (24 bit)
eDP	- 1 (Support 3840*2160@60Hz)
VGA	- 0
Serial	- 4
SATA	- 0
mPCIe	- 1 (full size)
Parallel	- 0
mSATA	- 0
M.2	- 0
GPIO	- 1

Chassis intrusion	- 0
Audio Header	- 1
SMBUS/I2C	- 0
DC-input	- 0
MIPI	- 1 (For camera)
Others	- 1 * I2C
Watchdog Timer	
Interval	- 256 segments, 0,1,2...255sec/min
Power Requirements	
Input PWR	- 12V DC-in (PWR Con)
Power On	AT/ATX Supported - AT : Directly PWR on as Power input ready - ATX: Press Button to PWR on after Power input ready
Certifications	
Certifications	- CE, FCC, RoHS, REACH (Option)
Environment	
Temperature	- Operating: 0°C ~ 45°C
	- Storage: -20°C ~ 65°C
Warranty	
Warranty	- 2 Years Limited Warranty
Packing	
Packing	- Net Weight: - Gross Weight: - Color Box dimension:

*Specifications subject to change without notice, not responsible for typographical errors. Does not include HDD or OS.

Optional Accessories

Part Number	Description
-----	ARM-R3288-2N
	ARM-R3288-2N M/B User's Manual

AGL

CONSULTORIA EM MINI-ITX

Especialistas em Soluções Mini-ITX e Sistemas Embedded

 <https://guedeslopes.pt>

 geral@guedeslopes.pt

 ESPAÇO 3D
RUA BRAANCAMP 84, 3 DTO
1250 052 LISBOA

 +351 218 278 341
+351 966 850 776