

THE UMBRELLA

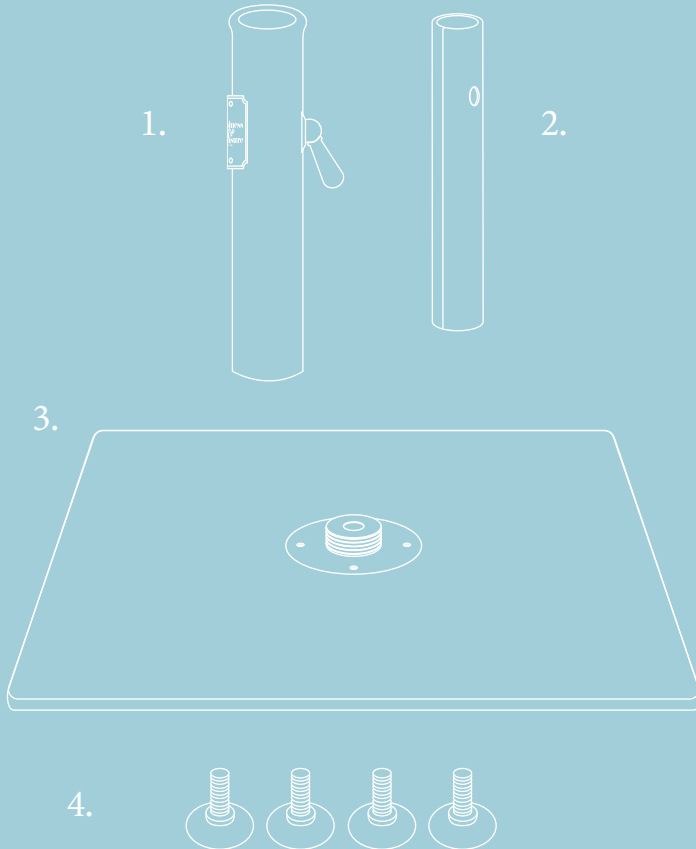
# BASE



business & pleasure co. <sup>TM</sup>

# CONTENTS

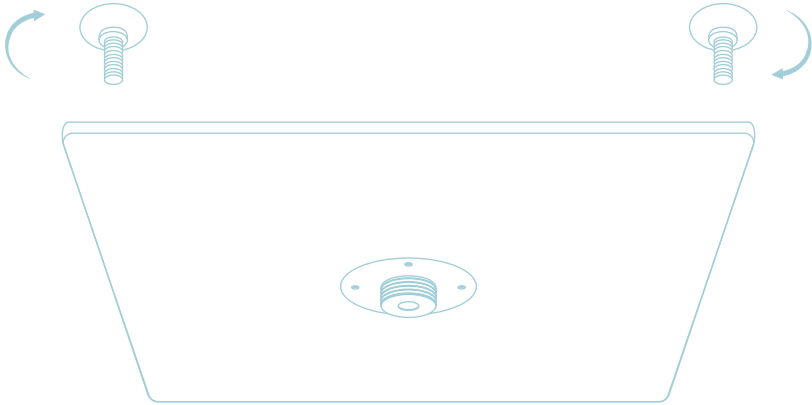
1. UPRIGHT POLE & HANDLE
2. RUBBER POLE INSERT (FOR USE WITH PREMIUM UMBRELLA)
3. BASE PLATE
4. 4 X LEVELING FEET



## GOT QUESTIONS?

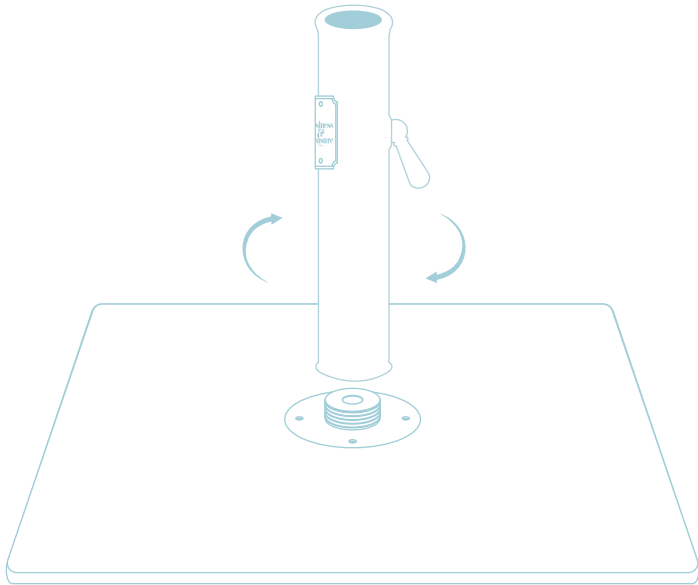
Email [orders@businessandpleasureco.com](mailto:orders@businessandpleasureco.com)  
Or visit [www.businessandpleasureco.com](http://www.businessandpleasureco.com)

# SIMPLE SET UP



1. Turn Base plate upside down) and screw 4 feet into the threaded holes in each corner. (feet are optional but allow clear passage for dirt, leaves and water to move under your stand reducing damage and exposure to elements).

NOTE: Do not slide base with feet in.



2. Turn base plate over and screw the upright pole onto the large center thread. Tighten untill firm with the hand.

3. Loosen the handle and your stand is ready to use.

# SET UP

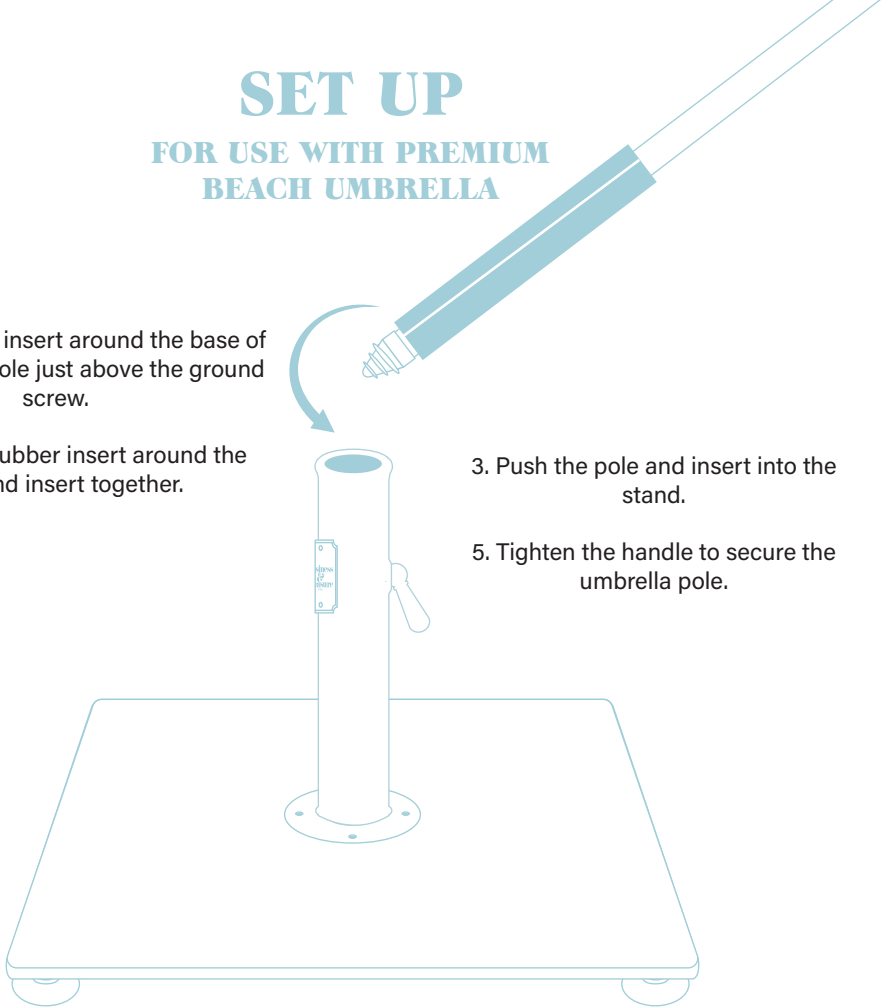
## FOR USE WITH PREMIUM BEACH UMBRELLA

1. Wrap rubber insert around the base of the umbrella pole just above the ground screw.

2. Wrap the rubber insert around the pole and insert together.

3. Push the pole and insert into the stand.

5. Tighten the handle to secure the umbrella pole.



## WARNING!

BASE IS HEAVY, ALWAYS BEND YOUR KNEES WHEN ATTEMPTING TO PICK UP. KNOW YOUR LIMITS AND ASK FOR ASSISTANCE IF NEEDED.

Never leave an umbrella in the stand during high winds.

Even if the umbrella is closed, strong winds can knock over your umbrella, damage it along with the stand and anything or anyone in its way.

## CARE.

1. Always use your base as per the set up instructions.
2. To maintain and extend the life of your product, keep it dry and clean of any salt, sand, chlorine or chemical residue.
3. Avoid contact with anything sharp that might scratch the paint.
4. Clean with soft cloth and gentle soapy water.