



Installation Instructions for Sprinter 170 EXT

Lower Furniture

Wall Bracing

#61999-75-03-300

General Notes

- 7 pieces of galvanized steel upper wall braces. Gives support when mounting upper cabinets or I-track in this area.
- Please read all instructions thoroughly before starting installing this product.

Parts List

- (1) **#61999-75-03-09** – 144/170/170EXT WB DS Front Lower Support - Galvanized Steel
- (1) **#61999-75-03-06** - 170 / 170 EXT DS Over Fender Front - Galvanized steel
- (1) **#61999-75-03-07** - 170 / 170 EXT DS Over Fender Rear – Galvanized Steel
- (1) **#61999-75-03-08** - 170 / 170 EXT DS Rear – Galvanized Steel
- (1) **#61999-75-03-03** – 170 / 170 EXT PS Over Fender Front – Galvanized Steel
- (1) **#61999-75-03-04** – 170 / 170 EXT PS Over Fender Rear – Galvanized Steel
- (1) **#61999-75-03-05** – 170 / 170 EXT PS Rear – Galvanized Steel
- (1) Pack of 3/16" Rivets

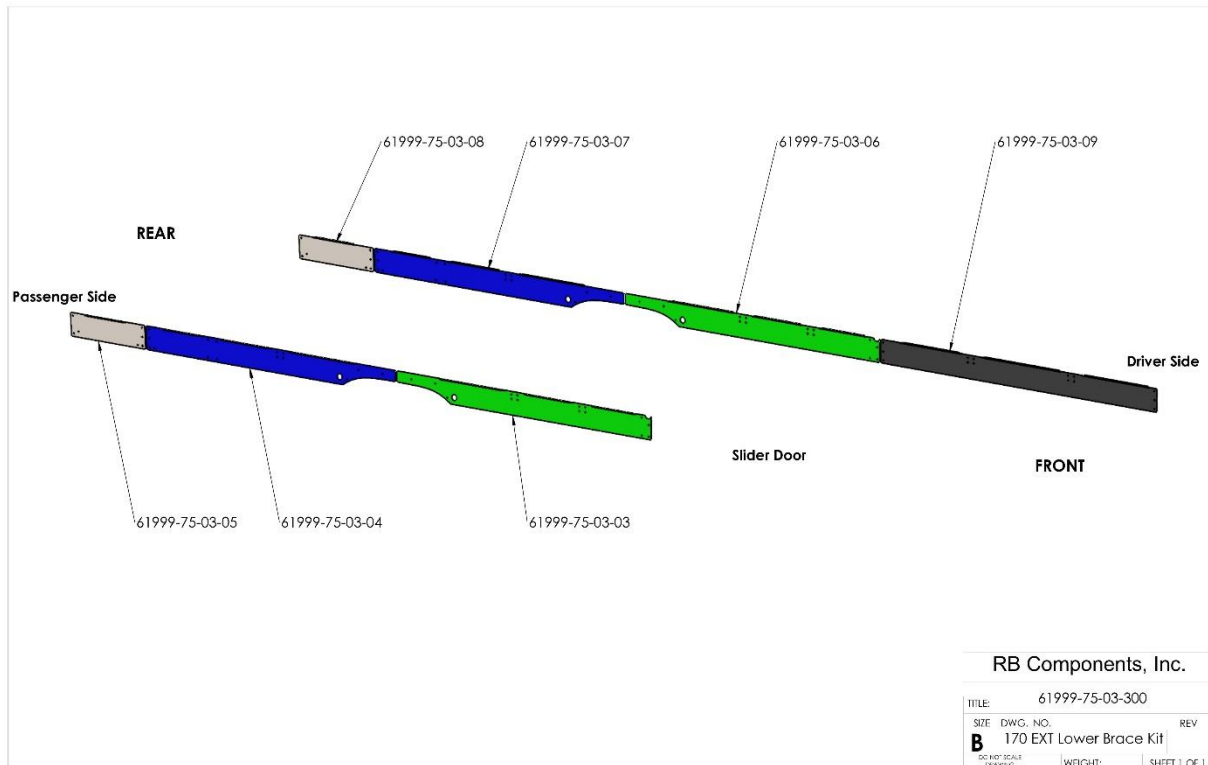
Tools Needed

- #11 Drill bit used for drilling out mounting holes for rivets
- Rivet Gun

- Measuring Tape

Installation

- 1) Start by identifying each of the wall braces by laying these out in the van before installation.



- 2) Once the individual braces have been identified we suggest aligning them properly. Each brace has a cut out for clearance on a small bump out in the frames interior. Align the driver and passenger side braces to align with these cut outs. Once aligned the brace is held up to the top and side support structure of the van. Using a #11 drill bit drill thru the holes and rivet braces into place as shown.







Installation is now complete. If you have any further questions on this or any other RB Components product please feel free to reach us directly (562) 802-1200