





- 2) Once the screws and snap buttons are removed from the upper part of the grill pull the top part of the grill back slightly to access the lower retaining clips.



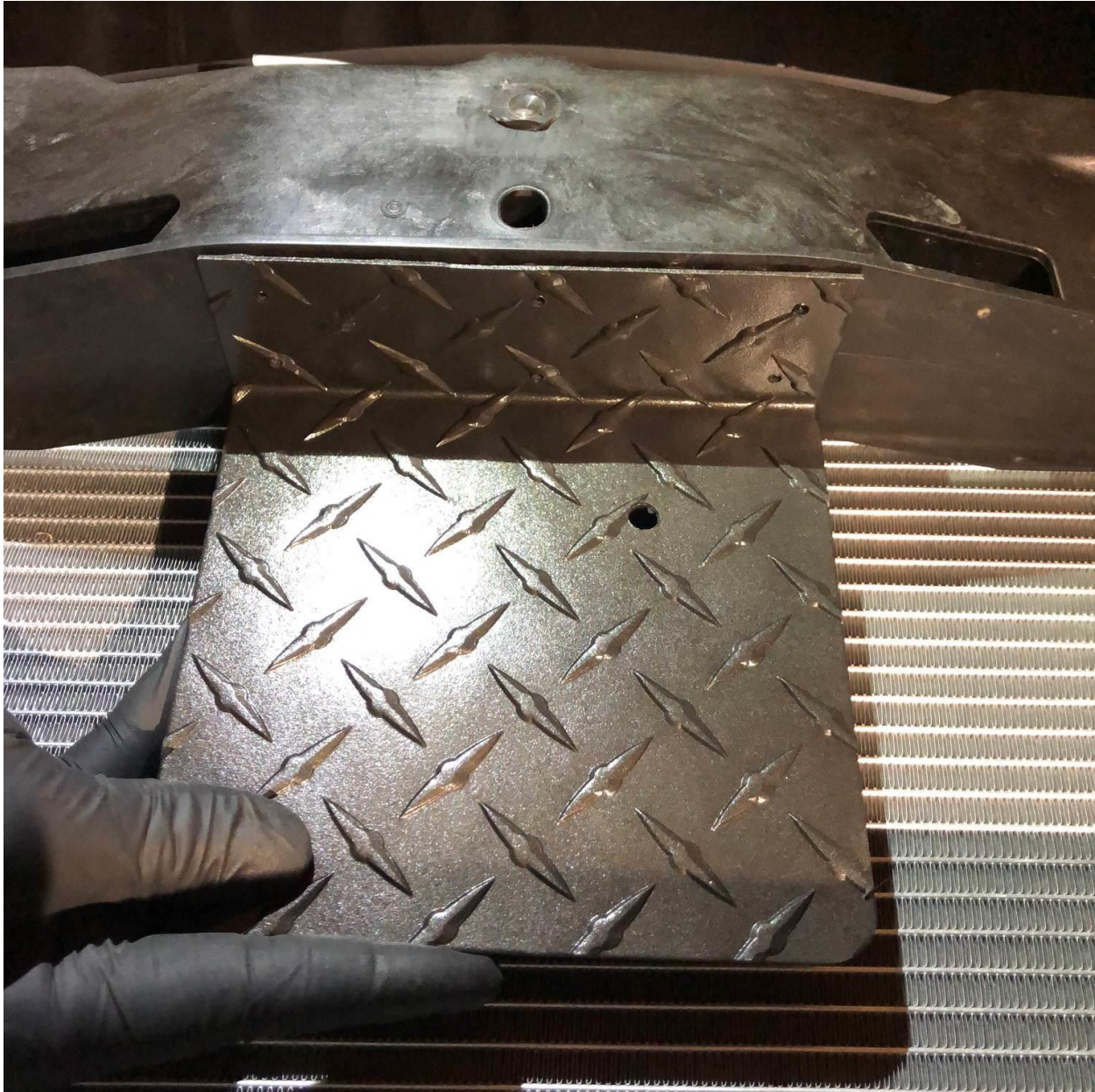




- 3) Push the retaining clips down to allow the lower part of the grill to unclip from the front of the van. Remove the front grill and set aside.
- 4) With the grill removed, place the horn mounting bracket under as shown. Center the bracket making sure that the upper part of the bracket is behind the area where we will be mounting it.







- 5) With the bracket centered, use the (6 pcs.) #8 x  $\frac{3}{4}$ " self tapping screws to secure the bracket to the underside as shown (making sure to not overtighten).





- 6) With the horn mounting bracket in place take the nut and bolt that came with the horn. This will be used to mount the horn to the mounting bracket. Take the bolt and insert it through the back side of the bracket as shown. Next thread on the nut a few turns.





- 7) Place the horn over the nut. This will keep the nut in place allowing you to tighten the bolt from the backside of the horn mounting bracket. Using a 13mm open end wrench tighten the horn to the mounting bracket as shown.









- 8) The horn can now be wired in line with the factory horn.
- 9) Re-Install the front grill.

**Installation is Complete**