

INTENZE™

Artist Series

randyengelhard

Tattoo by Number Set 25 Colors of Tattoo Ink

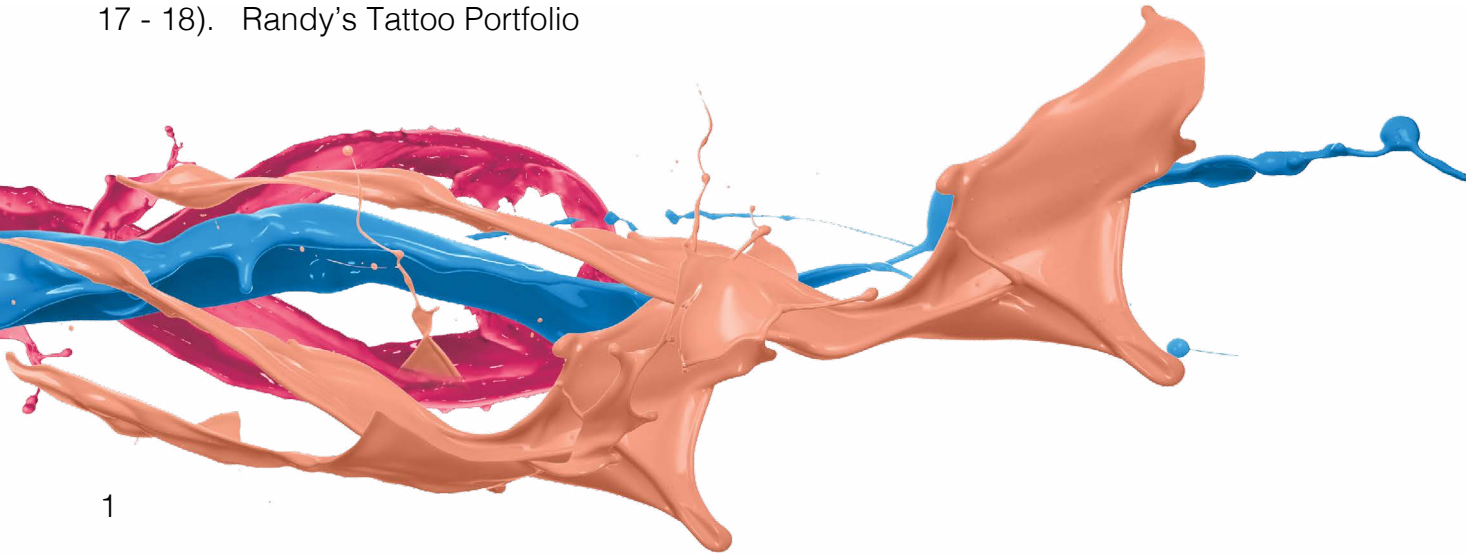


randyengelhard

Table of Contents

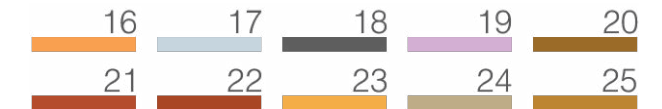
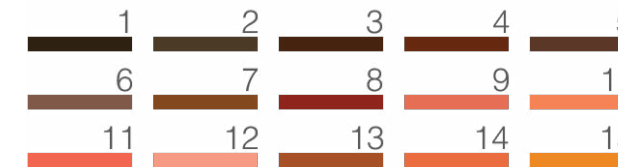


- 2). 25 Color Set
- 3 - 4). Technique Sketch (Brown Flesh)
- 5 - 6). Technique Sketch (Red Flesh)
- 7 - 8). Technique Sketch (Yellow Orange Flesh)
- 9 - 10). Black Hair
- 11 - 12). Brown Hair
- 13 - 14). Blonde Hair
- 15 - 16). Tips and Tricks
- 17 - 18). Randy's Tattoo Portfolio

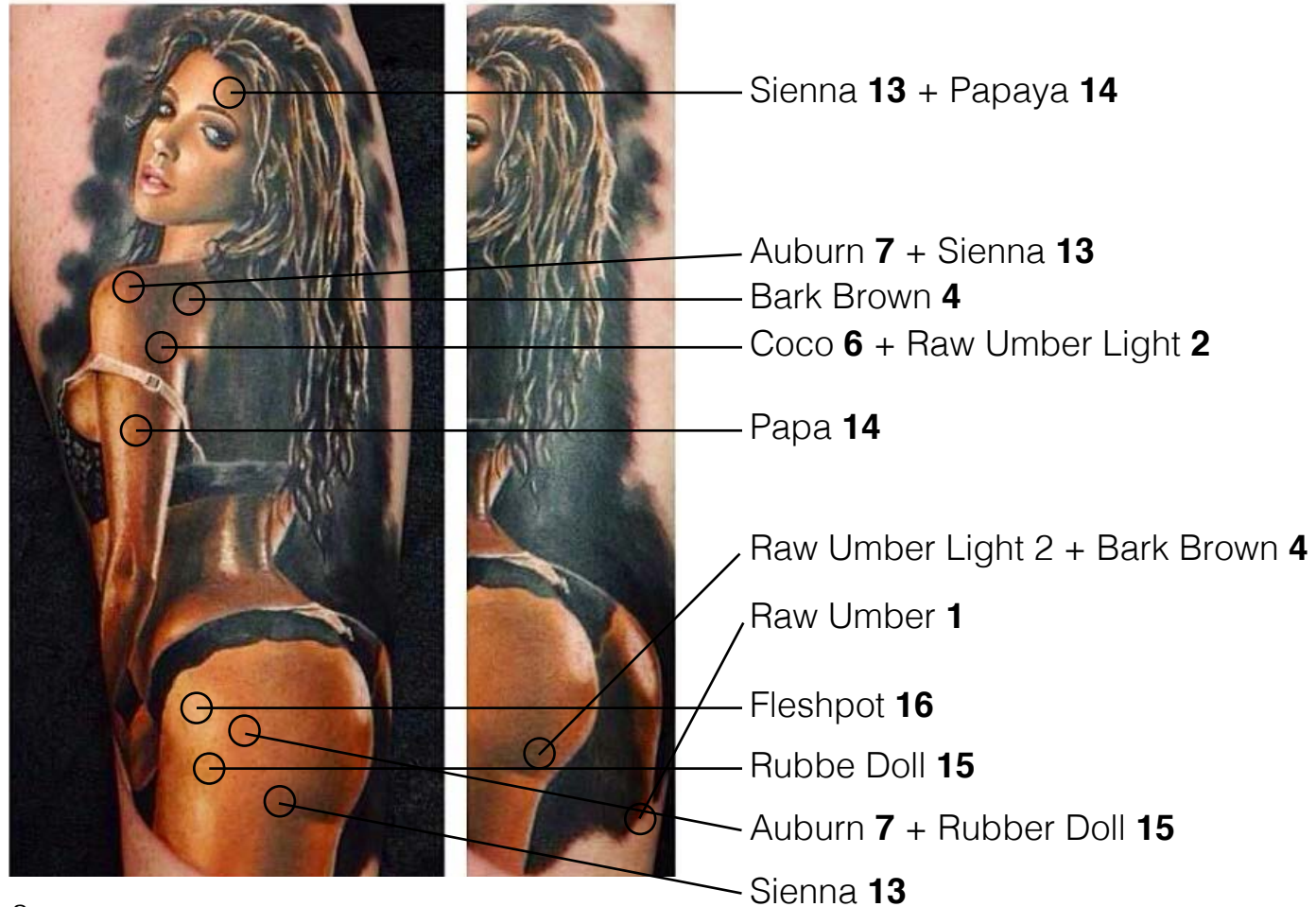


25 Color Set

- | | | |
|---------------------|----------------------|----------------------------|
| 1). Raw Umber | 10). Dirty Beige | 19). Purple Silver |
| 2). Raw Umber Light | 11). Sweet Candy | 20). Maroon |
| 3). Dark Chocolate | 12). Flower Child | 21). Ginger |
| 4). Bark Brown | 13). Sienna | 22). Light Brown |
| 5). Kakau | 14). Papaya | 23). Bamboo |
| 6).Coco | 15). Rubber Doll | 24). Sand Medium |
| 7). Auburn | 16). Fleshpot | 25). Sand |
| 8). Bark Brown | 17). Titanium Silver | |
| 9). Auburn | 18). Platinum | 26). Color Mixing Solution |



Technique Sketch **Brown Flesh**



Browntone **Skin**

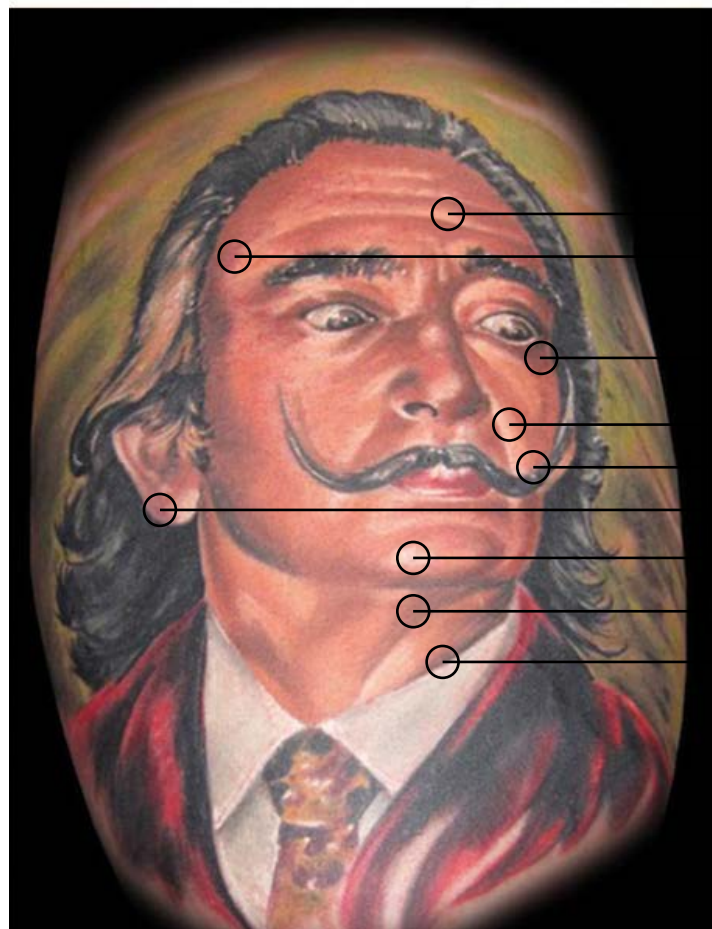


Elaborating of contrast depths with Sumi Black and Raw Umber 1, then working out the contrast shades from the mid range, Raw Umber Light 2 + Bark Brown 4 with Auburn 7 and maybe Rubber Doll 15 Mixed to elaborate the primal region up to the light skin spots which are worked in with a needle-mix of Papaya 14 and Flesh Spot 15 layer by layer.

The rest is worked out up to high white with emotionally mixed Fleshpot 16 and Fleshpot 16 + White layer by layer up to a soft changeover. Place little shiny spots with high white in the end - Less is More!

To Receive a healthy Blotched red-brown, the tones Sienna 13 and Bark Brown 4 can be mixed.

Technique Sketch **Red Flesh**



- Dirty Beige **20**
- Red Cloud **9** + Dark Brown **8**
- Dark Brown **8** + Raw Umber Light **2**
- Flower Child **12**
- Red Cloud **9** + Flower Child **12**
- Purple Silver **19**
- Flower Child **12** + White (White not in set)
- Red Cloud **9** + Dark Brown **8**
- Raw Umber **1**

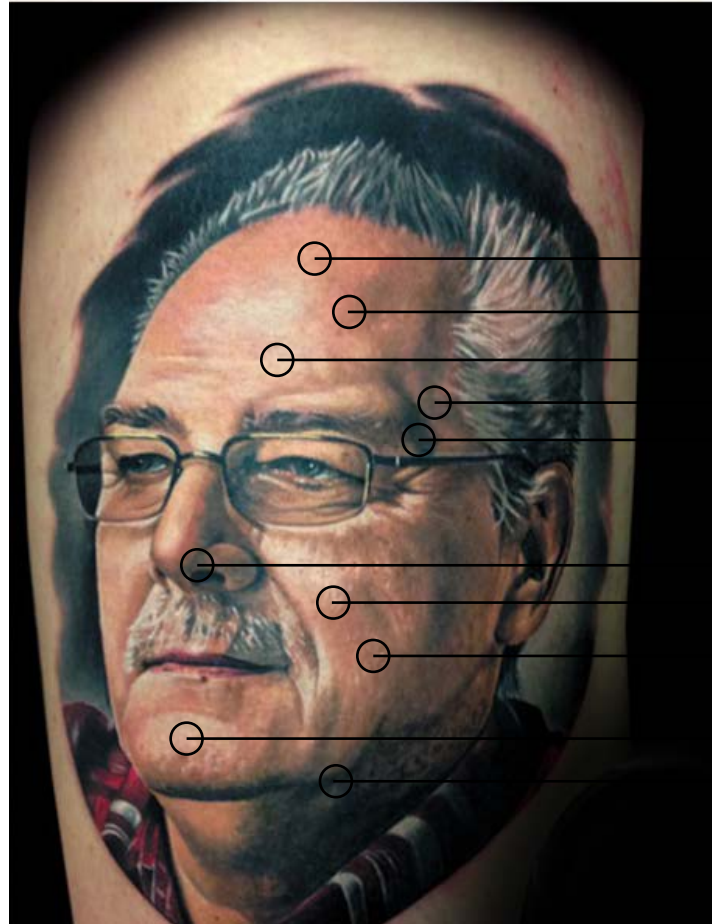
Redtone **Skin**



Working out deep contrasts with Raw Umber **7** and Dark Brown **8** then using middle-tones Red Cloud 9 to work in face structures before filling out the skin zones with a needle - mix of Red Cloud 9 + Umber, Flower Child 12 up to the highlight points the light brown with a needle mix of Flower Child 12 + White.

Layer by layer working out to soft passage with feeling, to give the skin tone a soft flesh-tone at some spots, we shade carefull with Dirty Beige 10. The side outside the light is worked in by reflecting the light of Purple Silver 19. This Show the reflection of the colors in the surrounding area to fit the tone of the clothes.

Technique Sketch **Yellow Orange Flesh**



- Papaya **14**
- Auburn **7** + Papaya **14**
- Fleshpot **16** + White
- Raw Umber Light **2**
- Raw Umber **1**

- Coco **6**
- Fleshpot **16**
- Auburn **7**

- Fleshpot **16** + Flower Child **12**
- Papaya **14** + Purple Silver **19**

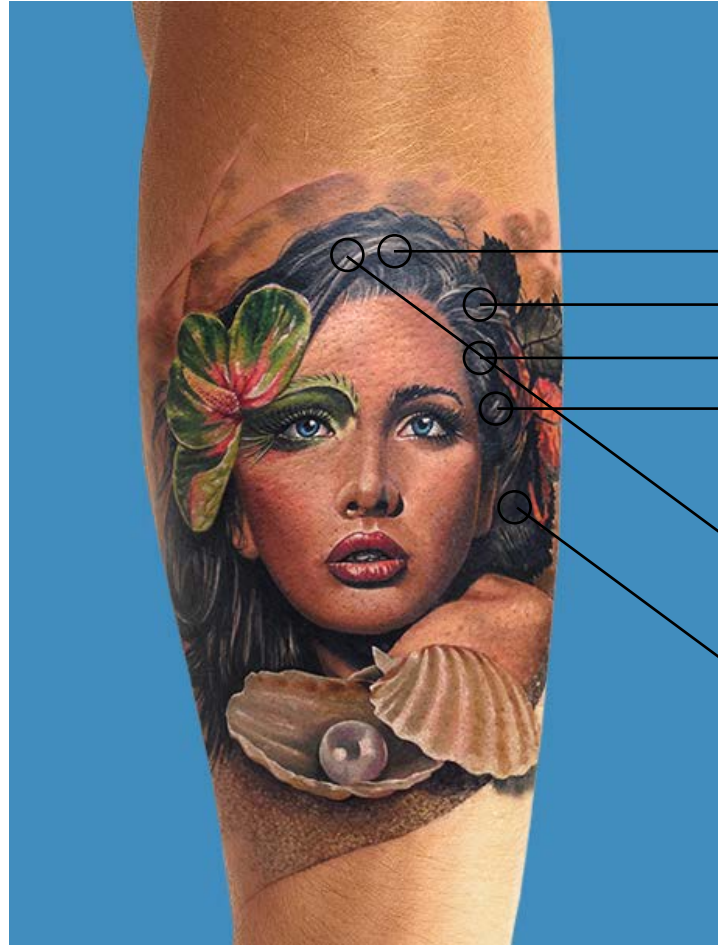
Flesh Orange **Skin**



After setting the contrast with Sumi Black and Raw Umber 1 we start off with the mid-tones Auburn 7 + Raw Umber Light 2 which leads us to the final tone by a careful needle-mix. Afterwards the rough structure (Wrinkles) of the face is elaborated with colors Papaya 14 and Fleshpot 16.

Next step is to work in a mix of Fleshpot 16 with Flower Child 12 into the lighter parts of the skin and shade it up to the high white with a mixture of Flower Child 12 and White. Layer by layer up to a soft pass. High whites only for a few wet spots.

Technique Sketch **Black Hair**



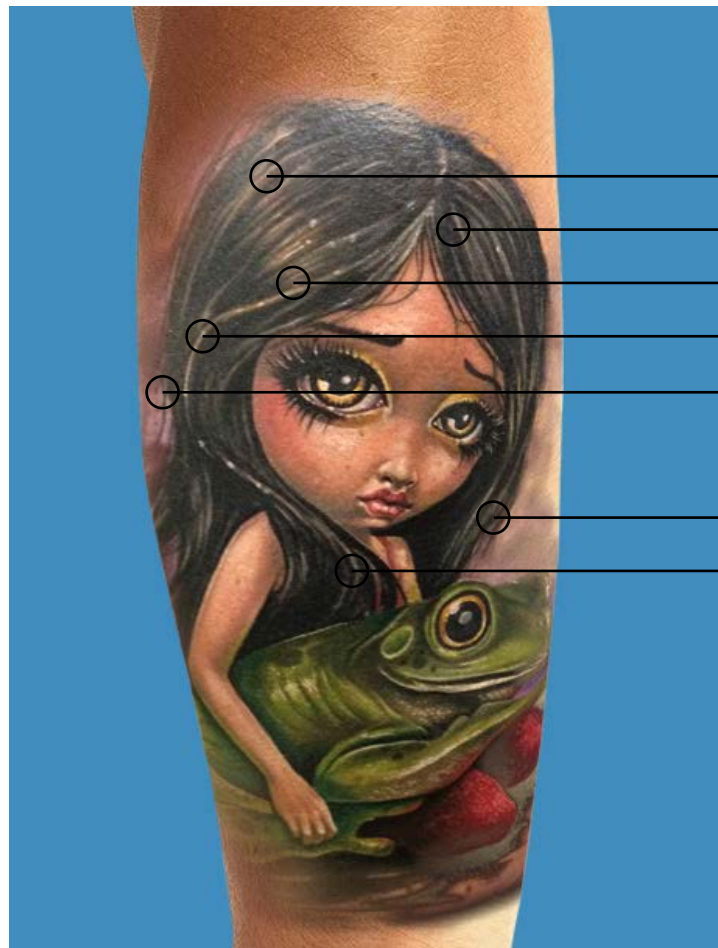
- Titanium Silver **17**
- Platinum **18** + Grey Wash Dark
(Grey Wash not in set)
- Platinum **18**
- Titanium Silver **17** + Platinum **18**
- Titanium Silver **17** + White
- Sumi Black (Black not in set)

Black Hair **Tone**



Working out contrast stripes with Sumi Black. Starting with the middle tones out of Titanium Silver 17 to create the structure of the streaks. Bright Streaks are made with Titanium Silver 17 and White. Again high whites are only for a few spots.

Technique Sketch **Brown Hair**



- Kakoo **5**
- Sumi Black
- Raw Umber **7**
- Coco **6**
- Marroon **6** + Auburn **7**
- Ginger **21** + White
- Raw Umber **1** + Coco **6**

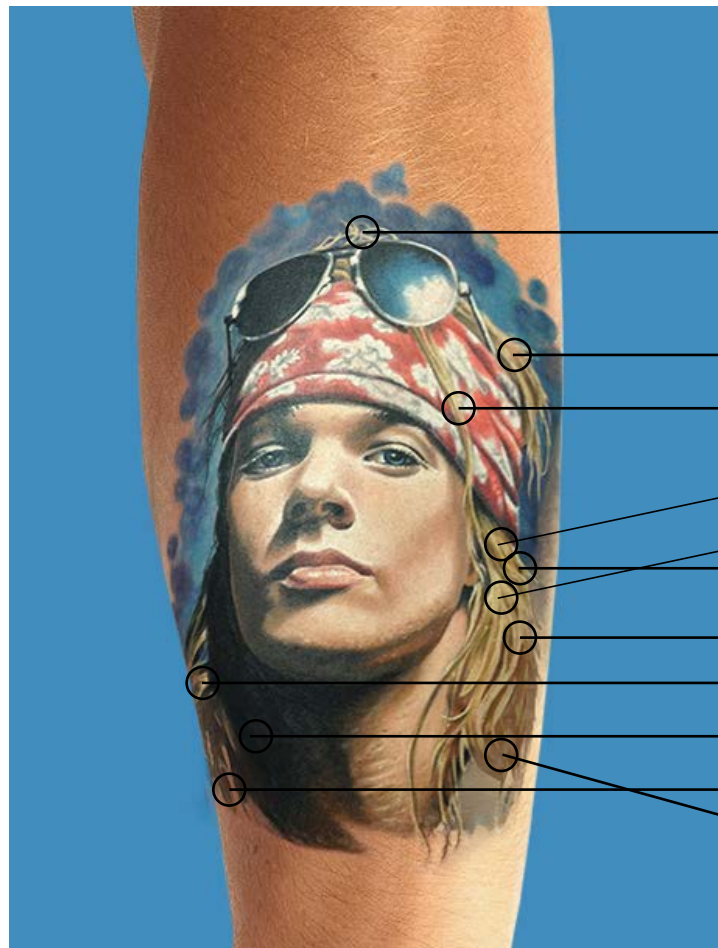
Brown Hair **Tone**



Here, the first step is also to work out the contrast stripes. Sumi Black and Raw Umber 1. Then starting from the middle-tone, which means Maroon 20 and Auburn 7 depending on the Brown-tone.

The third step is to place a needle-mix from Raw Umber 1 + Coco 6 as slight streaks Maroon 20 plane. Outside from light reflecting light streaks can be worked in with Kakau 5. The bright streaks are brought in by a needle-mix. Ginger 21 + White. High whites only for some spots again. Less is more.

Technique Sketch **Blonde Hair**



Sand **25** + Bamboo **23**

Light Brown **22**

Bamboo **23**

Sand Medium **24**

Light Brown **22** + Ginger **21**

Light Brown **22** + Coco **6**

Bamboo **23** + White

Ginger **21**

Sumi Black

Raw Umber **1**

Coco **6**

Blonde Hair **Tone**



The first step is to set deep contrasts which means working out Black and Raw Umber 1 then as a result the color-tone will build up from the middle-tone which means Ginger 21 (Structure, setting hair shades) in that case.

Next you have to work out the hair completely by mixing Bamboo 23 and a mixture of Bamboo 23 and White.

With Light Brown 22, a yellow shimmering can be added at some spots depending on the blonde tone of the hair. Put a new layer above. High white in the end at some rare spots, which means the crooked upper edge.

Tips & **Tricks**

Randy's **Tattoo Portfolio**



INTENZE™

