

RSNAV Android Series ROM recovery instruction (system recovery).

Read thoroughly before you begin, there are timing sensitive procedures to follow.

Nothing is too dangerous here. After all, this is how to recover a bricked device. So It doesn't matter if your device get bricked while doing this.

1. Install MediaTek VCOM driver.

<https://youtu.be/Ctqespdz1wQ>

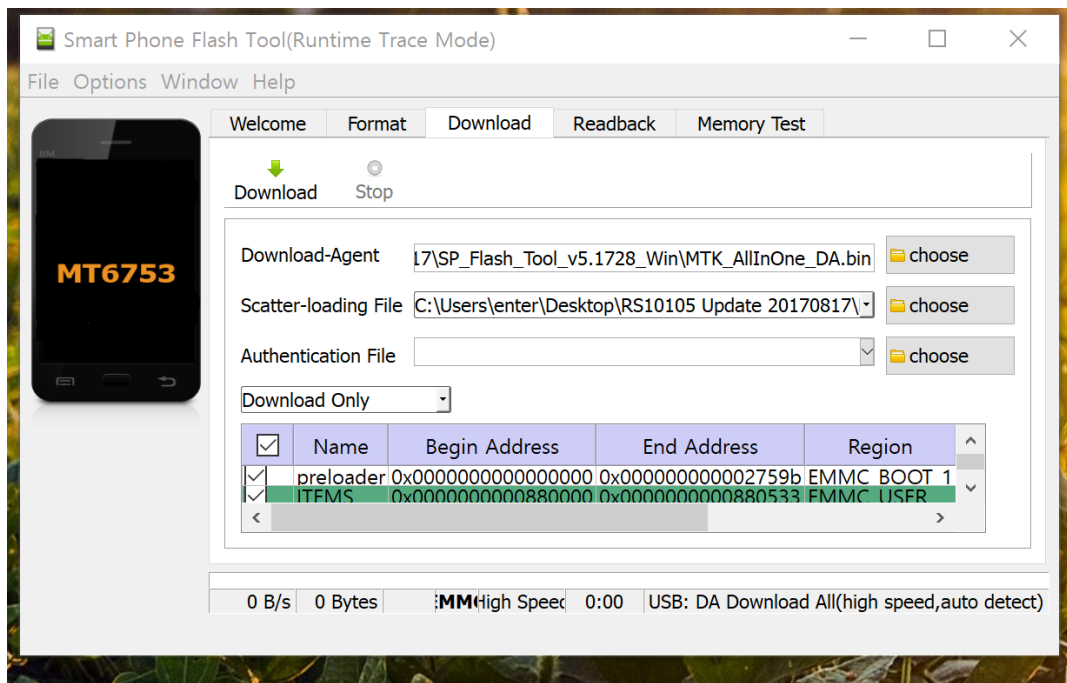
Go watch this video and follow this guy's instruction or Google 'install MTK VCOM driver' and find proper instruction for your Windows version.

Basically, it's all the same, adding VCOM drivers as legacy hardware. **If any instruction requires connecting the device**, just **skip it**. Your windows will automatically recognize the device when we are actually connecting to it. It does just make sure the driver is already installed in your Windows driver packages.

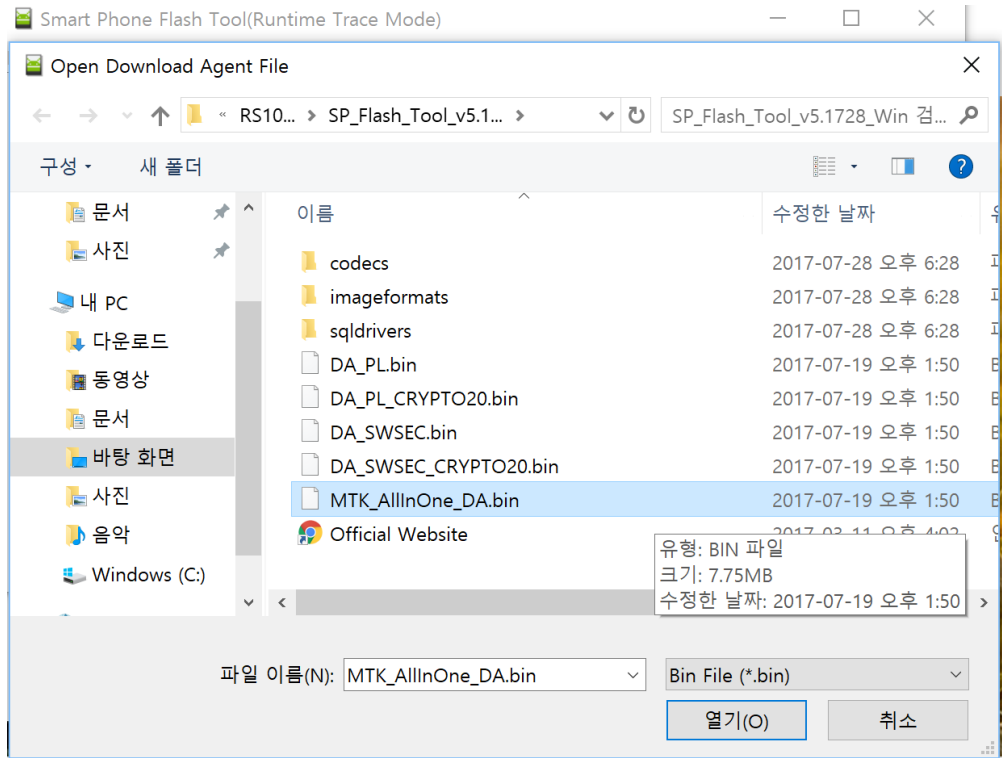
2. Unzip the '1024 600 Recovery Kit NA(or EU).zip' and 'Tools.zip' file into a folder.

[IMPORTANT] Do not flash wrong resolution, wrong region firmware

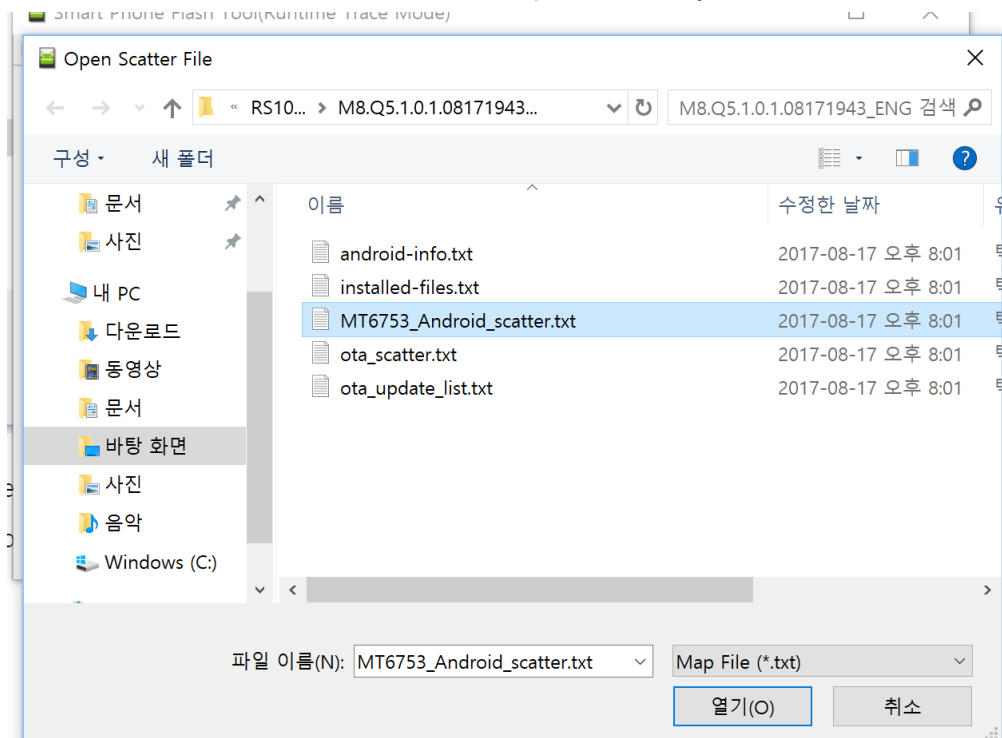
3. Go to SP_Flash_Tool_v5.1728_WIN and run 'flash_tool.exe'



4. Select Download-Agent as '**MTK_AllInOne_DA.bin**' in the 'SP_Flash_Tool_v5.1728_WIN' Folder. You need to do this even if the path is already seemed to be set.

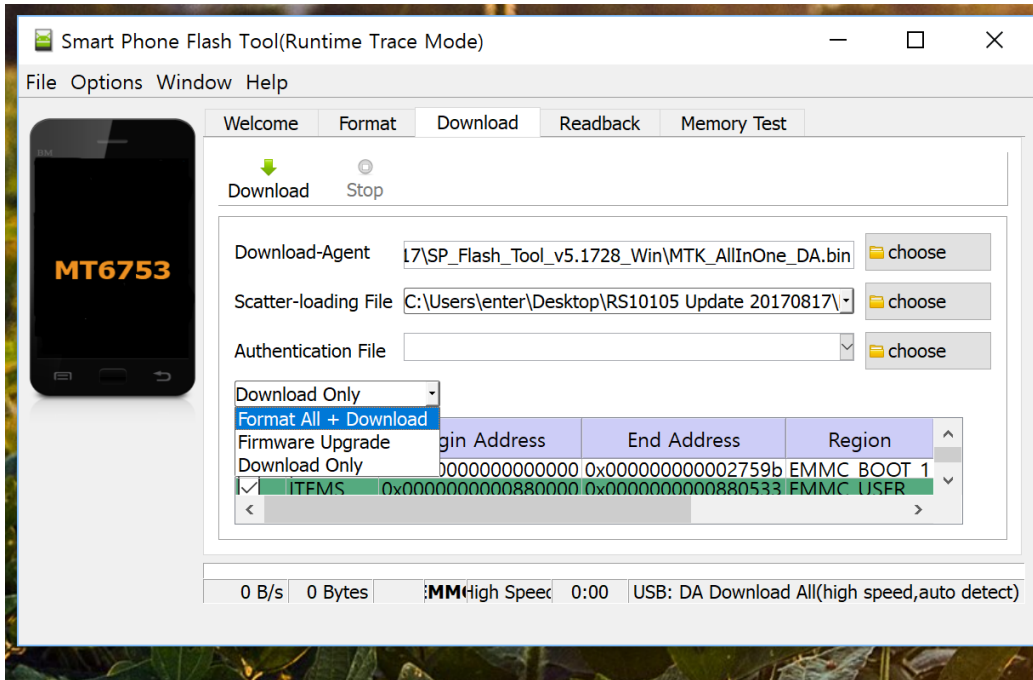


5. Select Scatter-loading File as 'MT6753_Android_scatter.txt' in the '1024 600 Recovery Kit EU' Folder. You need to do this even if the path is already seemed to be set.

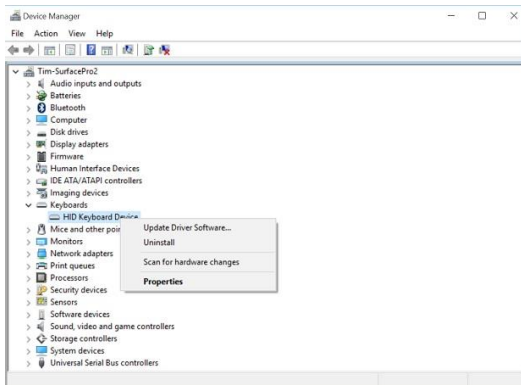


6. **[IMPORTANT]** Choose 'Download only' from the drop down menu.

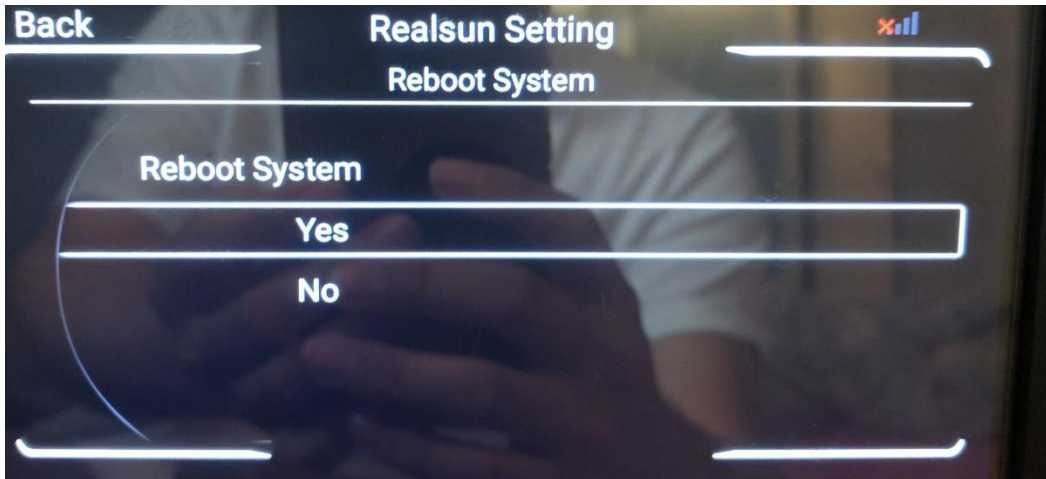
And leave like this for now. Do not close it, but leave it minimized.



7. Go to your car with your laptop and Male-to-Male USB cable ready. Once you unlock your door using remote, the device already has begun booting. Start your car or if you think your battery is fine start only the radio, then you will be able to see the device screen. Let it boot until you see the main screen.
8. Once you think the booting is complete, go ahead and connect USB cable to the device's USB port.
Nothing will happen. That's normal. The device's USB is getting activated momentarily while booting. Just stay connected for the both end of USB cable.
9. Go to your Windows control panel, and run up 'the device manager'. Leave it open.

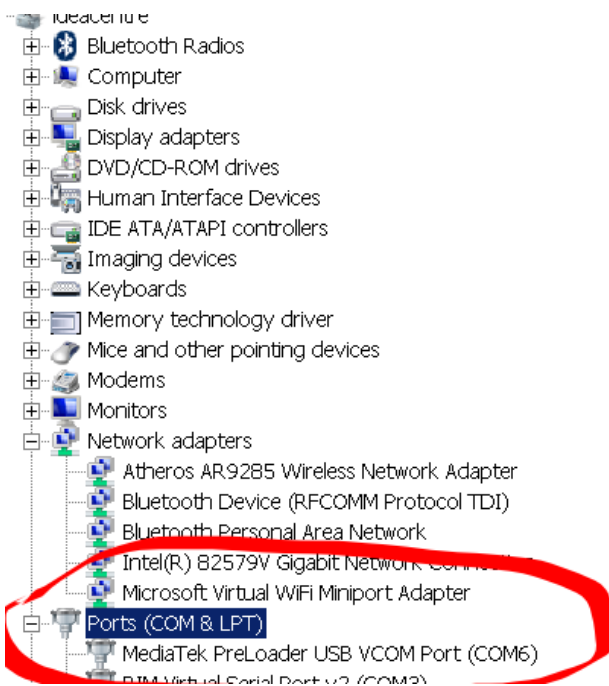


10. Go to 'Realsun Setting' app in the device, and 'Restart the system', 'Yes'. **The USB must be connected, and you need watch the device manager in your windows!**

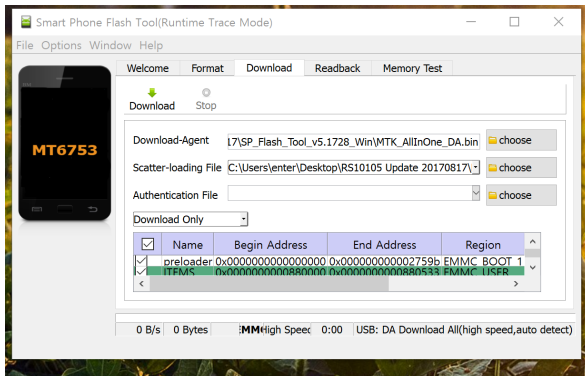


If your device is bricked, then disconnect the main connector, and plug the main connector back, this is to induce the bootloader to go to the download mode.

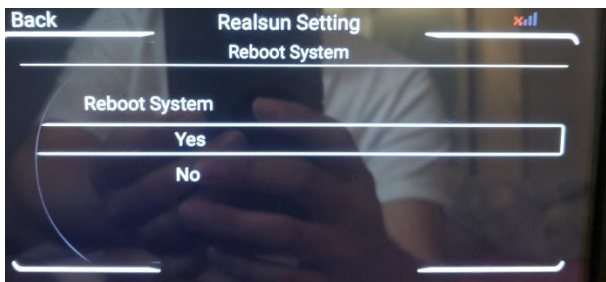
11. Once the screen went off and even before the initial warning message with the grey B8 image appears, you will **hear the USB device connection sound**. If you installed VCOM driver correctly, **MediaTek Preloader USB VCOM Port, will show up for two seconds** and will **dissappear**. Then you **will hear the USB device disconnection sound soon**. Then again you will **hear the USB connection sound again**, and 'Mobile device will appear on the device manager, and it will add Android ADB driver by itself. Let it proceed. **Important thing is to see if MediaTek Preloader USB VCOM Port was active for two seconds. If you saw something else than the word 'Preloader', then you need to install the driver again from the first.**



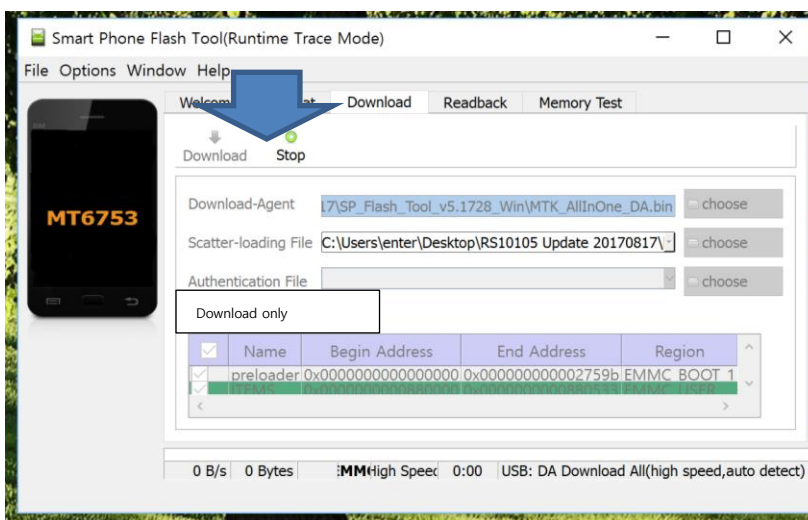
- If you think you saw **Preloader port was active** and there was **no exclamation mark** at the device manager, **you are ready**. Let the device boot up. And bring back 'Flash_tool.exe' that you kept minimized before.



- [Important]Go to 'Realsun Setting' app in the device again, and choose 'Restart the system'. **Do not press 'Yes' yet.** // If you bricked your device, this is the step that you **disconnect the main connector**.

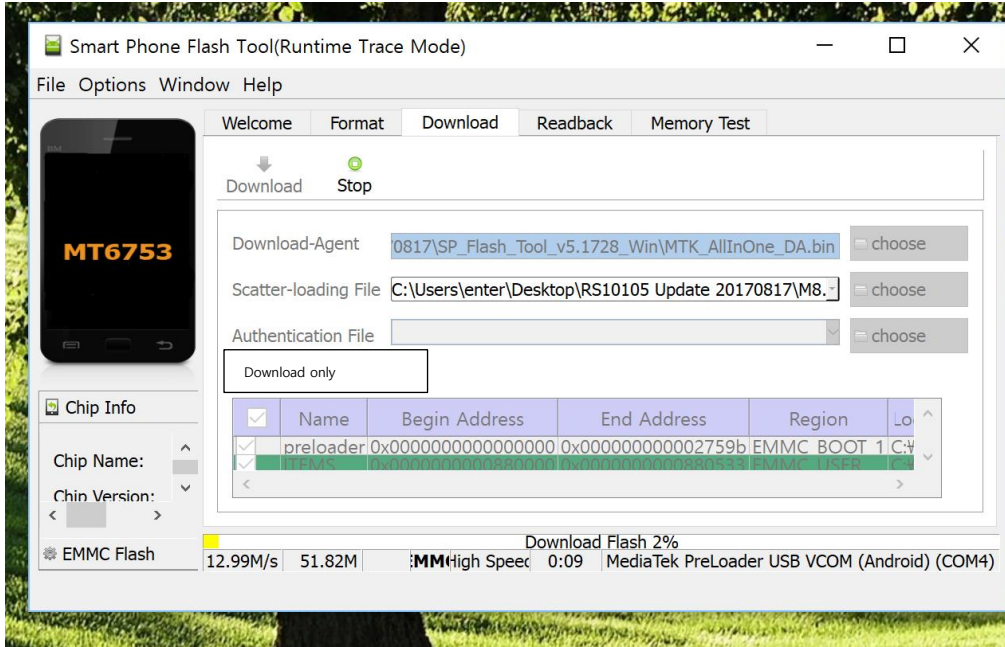


- Before press 'Download', make sure it's **Download only**. Press **'Download'**. **Nothing will happen. It's normal.**

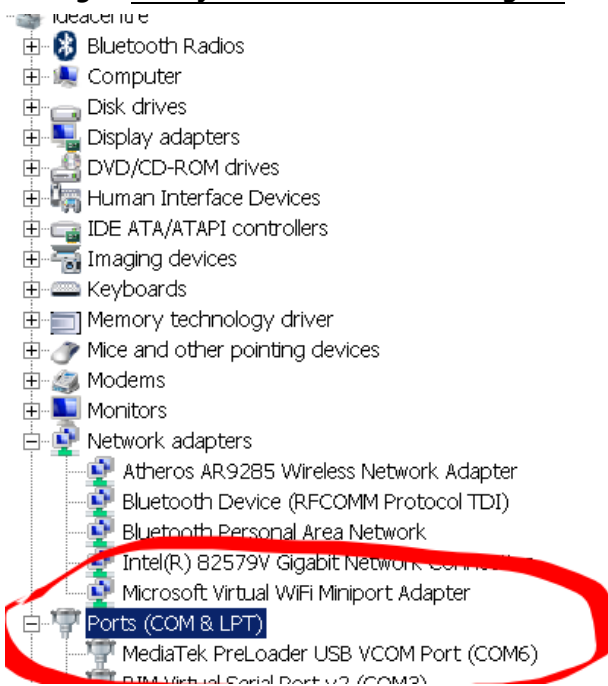


- Now quickly click 'Yes' on the device!** It will reboot. // If you bricked your device, this is the timing to **reconnect the main connector**.

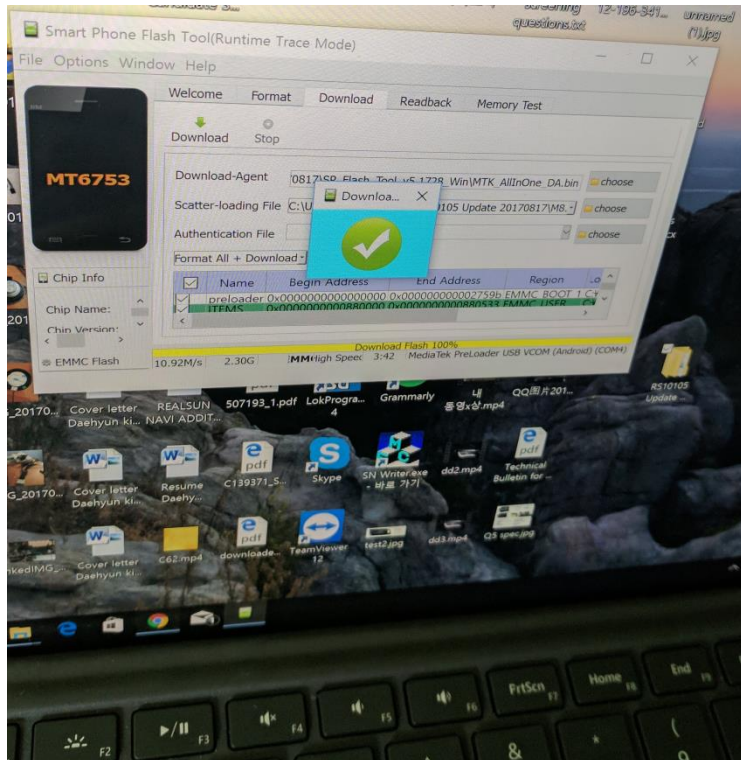
16. The device screen will be black, you will hear the USB connection sound, and there will be changes in your 'Flash tool screen'. **It should be formatting and then downloading like below. Will take about 5 min to flash the firmware.** Leave it until it completes.



17. If things are alright, you will see 'MediaTek PreLoader USB VCOM Port' is present and stay connected until the flash is complete. **If the device didn't stay black out, and there is no progress in 'Flash tool', and the VCOM Port is not presented in the device manager, then you install the driver, again.**



18. Once complete you will see this in your laptop.



19. The device would stay in black out. **Reset the device by pushing a sharp material into the reset hole on the front left side of your device's screen. 3 seconds of push will be enough.** Then device will start up as normal. **Booting will take more time than usual, since we just flashed the whole ROM.** Wait until it finishes booting. **Once, booting is complete,** it's done for firmware recovery.
20. Go to Realsun setting -> software upgrade -> See if 'Serial No.' section is blank or not. If Serial section is Blank, contact us at info@RSNAV.com