

Audi PQ35(Q3, SQ3) installation manual

1. Preparation before installation

It is recommended to mask interior trims for protection. Make sure to leave the car system completely off. It may be required to disconnect battery to prevent accidental deployment of airbags.

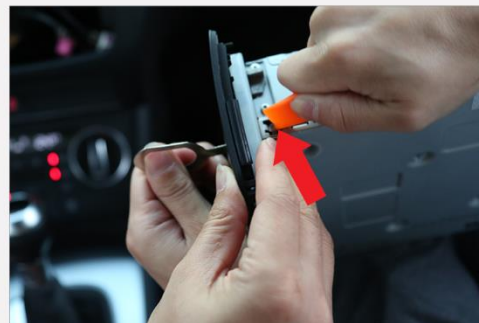
2. Disassembly steps and precautions



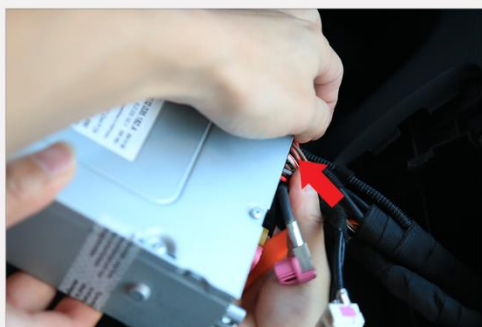
1. Before installation



2. Using VAG Radio removal keys, remove Radio/MMI Headunit.



3. To remove the VAG key, push in and up and pull the key out while holding the locking mechanism.



4. Unplug all the connectors behind the radio/MMI.



5. Remove the air vent using prying tool.



6. Unscrew the 8mm Hex screw holding the screen.



7. Pry up the original screen up with pry tool. Unplug all the plugs behind the original screen.



8. Pry out the climate control. Note: Pry the climate control from both side simultaneously.



9. Unplug the climate control CAN BUS connector shown above.



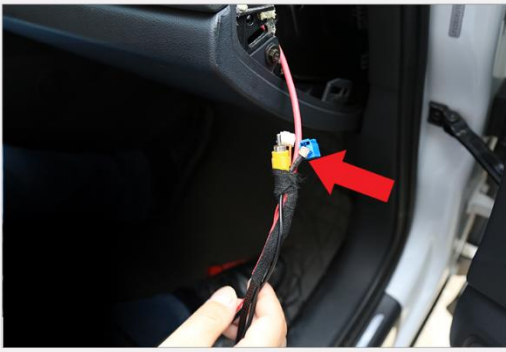
10.(Only for cars with the factory parkign sensors) Open the fuse panel cover in the trunk area located on rear right side of the vehicle and unplug the parking sensor module connector. Your car must be turned off.



11. (Only for cars with the factory parkign sensors) Connect the supplied T-Bypas cable for the parking sensor information pickup.



12. (Only for cars with the factory parkign sensors) Remove the passenger side fuse panel cover.



13. Route the parking sensor information cable to the front dash area by removing door step trims and passing the wire underneath the trims.



14. Install the provided main harness by routing the white main connector to the LCD screen area.



15. Let out the USB port on the passenger side left foot wall by probing into trim gaps.



16. Install the new screen into the factory original location. Note that there is one or two plus that no longer required to plug into the new screen.

NEXT

Installing Centre Speaker Bypass and routing USB Cable port

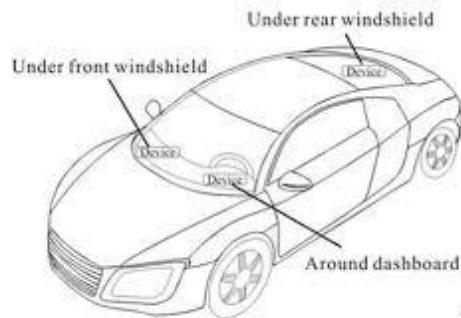
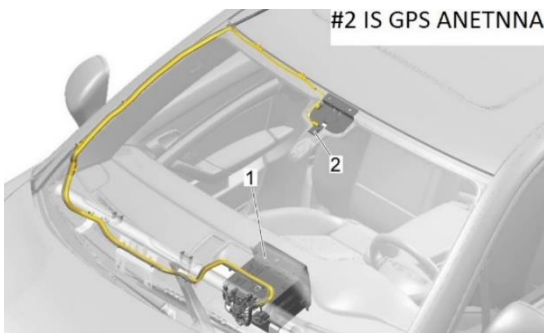


Remove the center dash speaker trim using a trim removal wedge, and unscrew the center speaker holding screws. Install the speaker bypass stemming from the main harness.



Route USB port into the glove box compartment by opening a hole using a drill or let out the USB port on the passenger side left side foot wall by probing into trim gaps.

Installing GPS and Cellular antennas



- Under the dash board below the front windshield;

- Preferred location of both antenna is near the rear-view mirror. However, signal reception may vary as each vehicle has different rate of signal penetration.
- Using GPS test plus app as well as mobile signal checking tools available from Google Play Store to determine the best location and angle of the antennas.

Removing A-pillar trim to pass the antenna wires to windshield.



WARNING

There is a curtain airbag behind this trim, and it may ignite if not be careful.

- Switch on ignition.
With ignition switched on, disconnect battery earth wire.
- Before handling pyrotechnic components and restraint systems (e.g. unplugging electrical connector) the mechanic must discharge static electricity by briefly touching the door striker plate, or similar.



WARNING

Observe safety regulations for pyrotechnic components

- Use a screwdriver to carefully unclip cap -1- with "airbag" symbol from A-pillar trim (top).
- Remove bolt -2-.
- Starting at top, carefully unclip A-pillar trim (top) -3- with removal wedge -3409--arrow A-.
- Pull A-pillar trim (top) out of dash panel -arrow B- and detach.

Installing



WARNING

Observe safety regulations for pyrotechnic components

Take care not to trap curtain airbag when fitting A-pillar trim (top).

Installation is carried out in the reverse order; note the following:



Note

If there are still trim clips in the body mounting points, they must be removed and inserted in the trim when installing. Check the clips for damage or deformation and renew them if necessary.

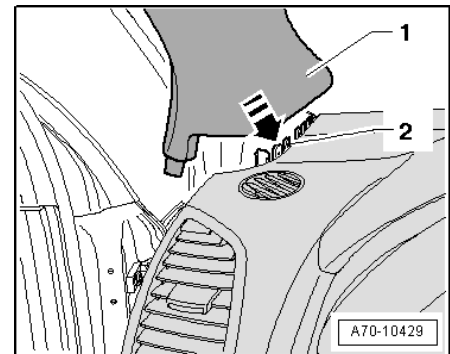
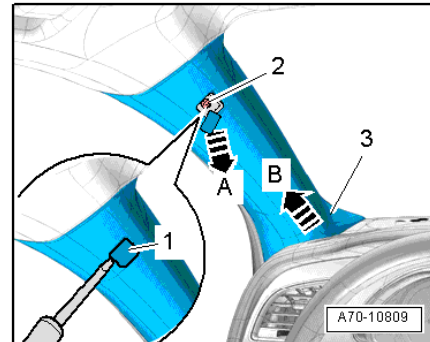
- Use a thread tap to remove any residual locking fluid from threaded hole for bolt for A-pillar trim (top).



Note

If the threaded hole is not cleaned, there is a danger of the new bolt seizing when being screwed in and then shearing off the next time you try to remove it.

- Insert A-pillar trim (top) -1- in mounting -2- of dash panel and sill panel trim (front) in direction of -arrow-.
- Clip in A-pillar trim (top) and fold over lip of door seal.



It is not necessary to remove roof lining to pass a wire. Pull down lining by a bit of force and squeeze in the antenna wires.

Activating External Audio Input **If this is not done, there will be no sound output**

Method 1.

If you have AMI to AUX adaptor, please plug it in to MMI/AMI plug to activate external audio source in Media tab of your Radio/MMI.



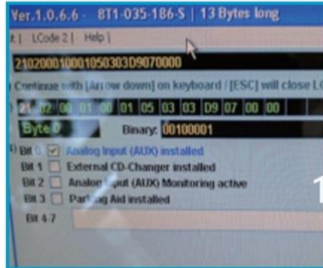
Plug this side to your
AMI in glovebox or
centre armrest

Do not plug this side to
anything

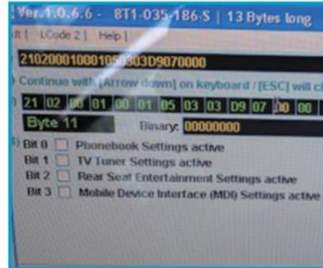
Method 2. Coding the system using Vag Com

Concert/Symphony radio

Using VAG COM,
At Radio module-> coding-> long coding helper



Byte 0, check AUX installed.



Byte 11, Uncheck Mobile Device Interface(MDI) setting active.

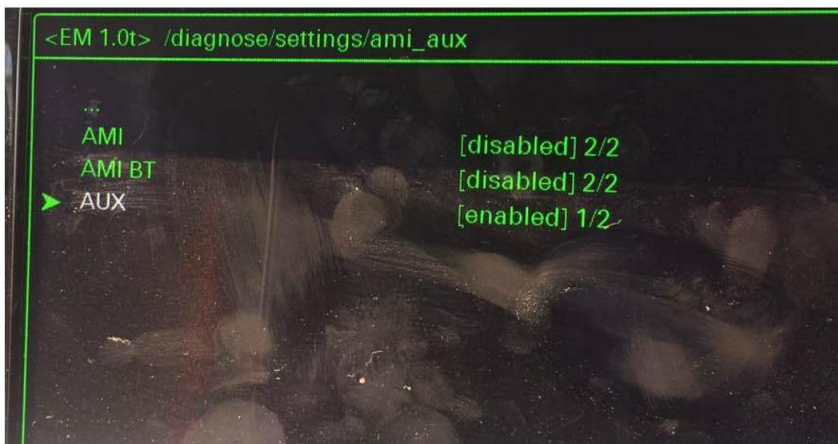


This should activate the AUX

3G MMI+

Enabling Aux input in MMI

1. Preparation: Enable Green menu using VAGCOM or OBD Eleven
Connect with module 5F – Control Head.
Choose procedure 10 – Adaptation.
Choose Perquisite Channel 6.
Read stored value. By default it should be 0.
Change value to 1 and save it.
Read stored value. Now it should be 1.
Exit



Audi MMI 3G AUX activation procedure

1. Turn key into II position and wait for the MMI 3G system to start. You can also use keyless buttons.
2. Press and hold buttons MENU(or SETUP) and CAR.
3. After couple of seconds hidden green menu will appear. You can now release the buttons.
4. Navigate to diagnose → settings → AMI/AUX.
5. Change the value of “AUX” “disabled” to “enabled” preserving other options.
6. Press RETURN and CAR buttons at the same time to exit hidden green menu.
7. Restart the MMI