

Audi B9 installation manual

1. Preparation before installation

It is recommended to mask interior trims for protection. Make sure to leave the car system completely off. It may be required to disconnect battery to prevent accidental deployment of airbags.

2. Disassembly steps and precautions



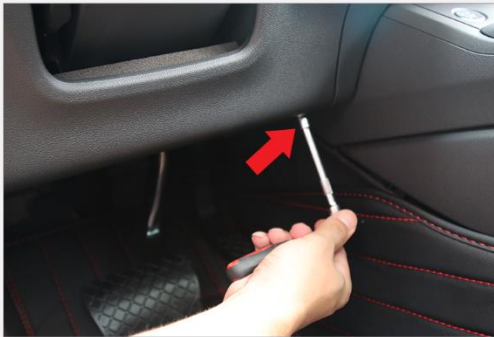
1. Before installation



2. Using prying tool remove the driver side fuse panel cover



3. Unscrew 8mm Hex Bolt



4. Remove two screws fixing the knee board cover, one on each side.



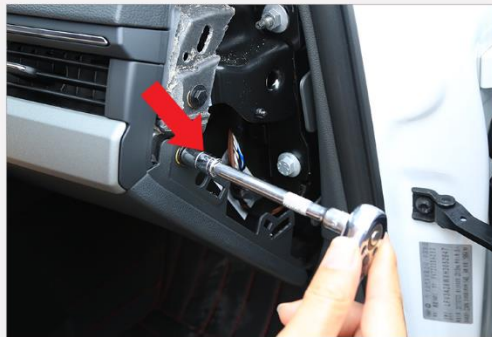
5. Remove the cover by pulling downward.



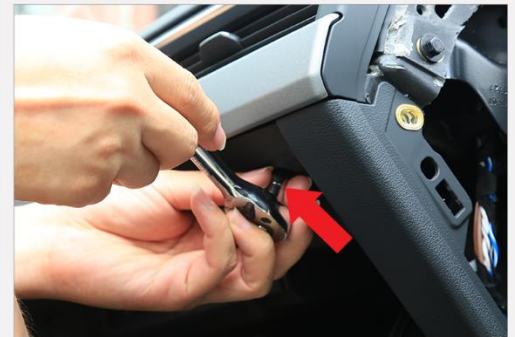
6. Remove the trim holding screw with T20 driver.



7. Using prying tool remove the passenger side fuse panel cover



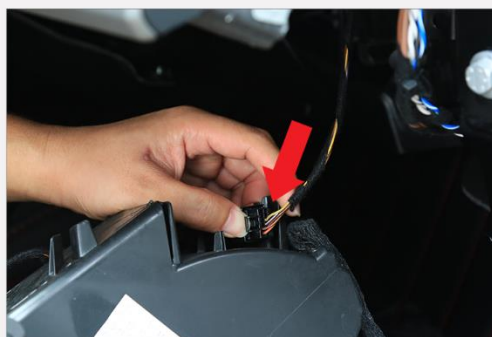
8. Unscrew 8mm Hex Bolt



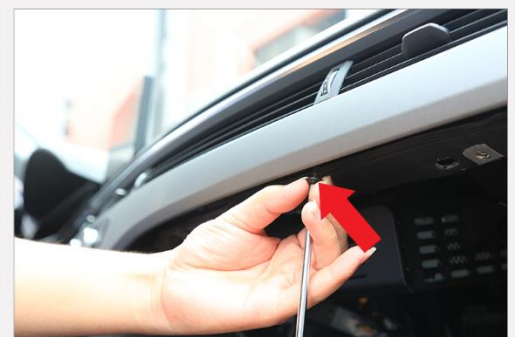
9. Remove 6 screws inside the glove box.



10. Remove 2 screws at the bottom of the glove box and unmount the glove box downward.



11. Unplug the electrical connector and remove the glove box



12. Remove all T20 screw holding the trim.



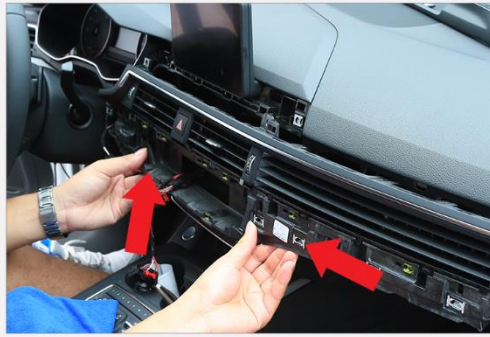
13. Unmount the climate control and unplug all the connectors.



14. Unscrew 4 inside 8mm Hex screws



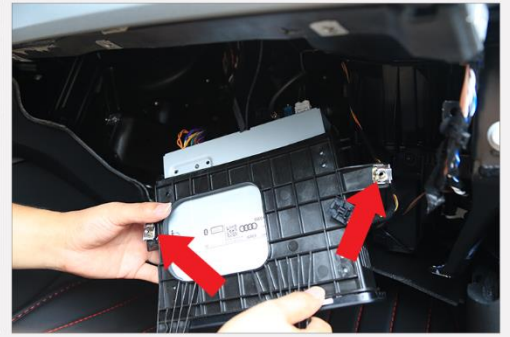
15. Remove the lower screen trim by prying from the bottom and pull the trim outward.



16. Remove the dash air duct frame by prying and pull according to the arrows.



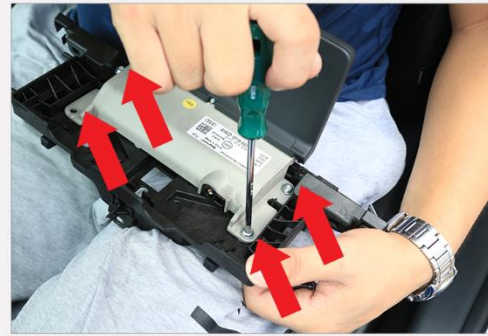
17. Remove the original screen by removing all the holding screws and disconnecting connectors.



18. Remove MIB headunit by unscrewing the holder screws.



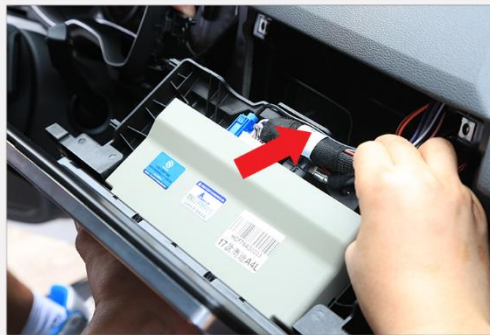
19. Install the provided main harness by routing the white main connector to the LCD screen area.



20. Unscrew the original screen from its tray.



21. Install the new screen into the factory tray.



22. Plug all the connectors into the new screen.



23. Transfer all the factory metal clips into new lower screen trim supplied with the kit and install it.



24. Start the system by pressing the power button. Test functionality and assemble everything back.

Installing Centre Speaker Bypass and routing USB Cable port

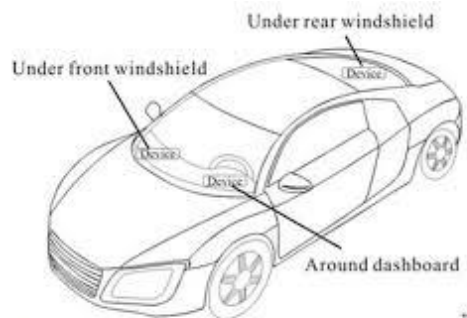
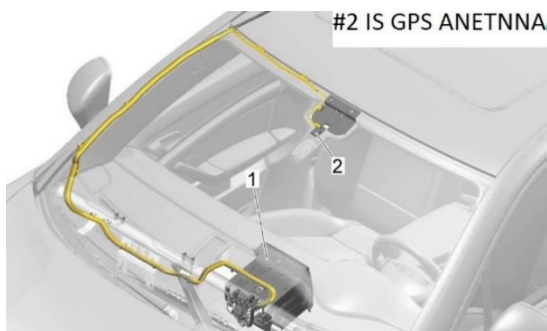


Remove the center dash speaker trim using a trim removal wedge, and unscrew the center speaker holding screws. Install the speaker bypass stemming from the main harness.



Route USB port into the glove box compartment by opening a hole using a drill or let out the USB port on the passenger side left side foot wall by probing into trim gaps.

Installing GPS and Cellular antennas



- Under the dash board below the front windshield;

- Preferred location of both antenna is near the rear-view mirror. However, signal reception may vary as each vehicle has different rate of signal penetration.
- Using GPS test plus app as well as mobile signal checking tools available from Google Play Store to determine the best location and angle of the antennas.

Removing A-pillar trim to pass the antenna wires to windshield.



WARNING

There is a curtain airbag behind this trim, and it may ignite if not be careful.

- Switch on ignition.
With ignition switched on, disconnect battery earth wire.
- Before handling pyrotechnic components and restraint systems (e.g. unplugging electrical connector) the mechanic must discharge static electricity by briefly touching the door striker plate, or similar.



WARNING

Observe safety regulations for pyrotechnic components

- Use a screwdriver to carefully unclip cap -1- with "airbag" symbol from A-pillar trim (top).
- Remove bolt -2-.
- Starting at top, carefully unclip A-pillar trim (top) -3- with removal wedge -3409--arrow A-.
- Pull A-pillar trim (top) out of dash panel -arrow B- and detach.

Installing



WARNING

Observe safety regulations for pyrotechnic components

Take care not to trap curtain airbag when fitting A-pillar trim (top).

Installation is carried out in the reverse order; note the following:



Note

If there are still trim clips in the body mounting points, they must be removed and inserted in the trim when installing. Check the clips for damage or deformation and renew them if necessary.

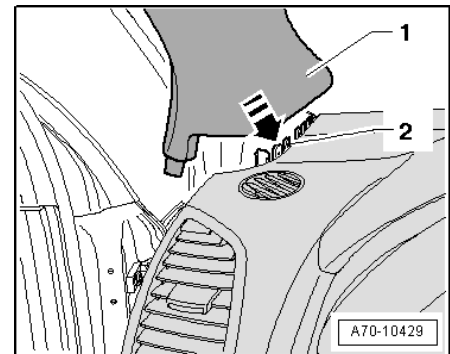
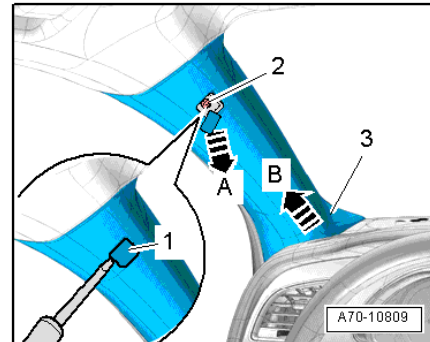
- Use a thread tap to remove any residual locking fluid from threaded hole for bolt for A-pillar trim (top).



Note

If the threaded hole is not cleaned, there is a danger of the new bolt seizing when being screwed in and then shearing off the next time you try to remove it.

- Insert A-pillar trim (top) -1- in mounting -2- of dash panel and sill panel trim (front) in direction of -arrow-.
- Clip in A-pillar trim (top) and fold over lip of door seal.



It is not necessary to remove roof lining to pass a wire. Pull down lining by a bit of force and squeeze in the antenna wires.