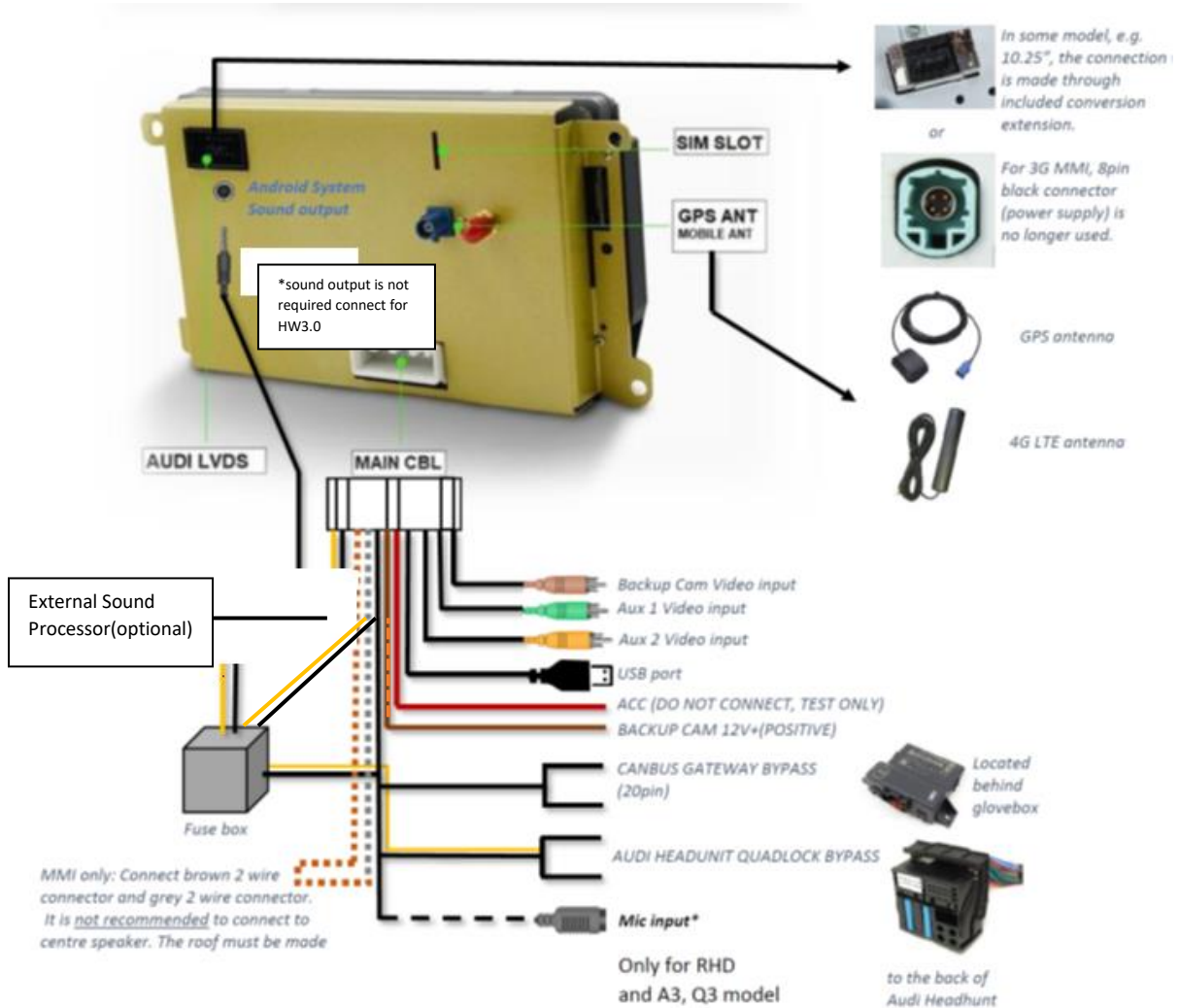


# Errata (HW3.0)

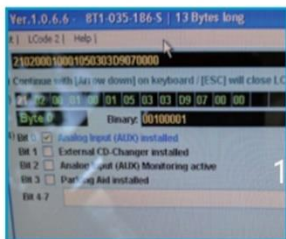
**\*\*This is a correction to the installation manual booklet. This paper overrules the booklet.\*\***  
 Following the diagram below, route the cables properly.



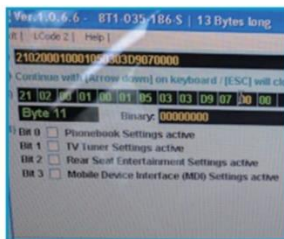
## Activating External Audio Input If this is not done, there will be no sound output

### Concert/Symphony radio

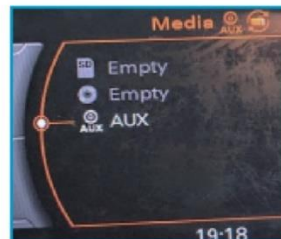
Using VAG COM,  
 At Radio module-> coding-> long coding helper



Byte 0, check AUX installed.



Byte 11, Uncheck Mobile Device Interface(MDI) setting active.

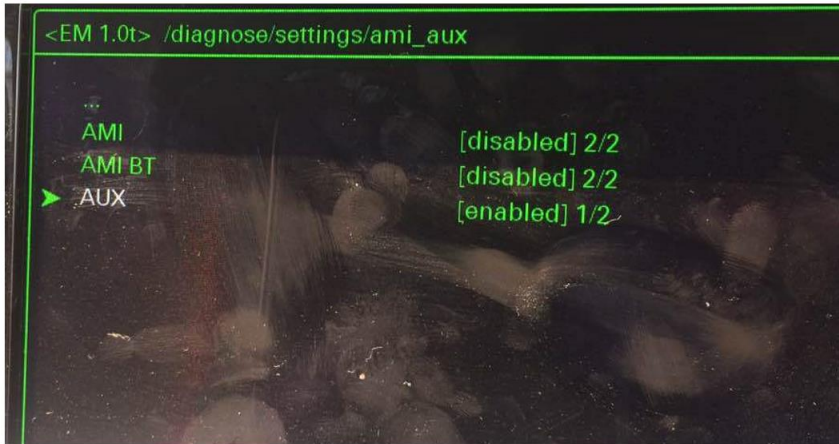


This should activate the AUX

### 3G MMI/MMI+

Enabling Aux input in MMI

1. Preparation: Enable Green menu using VAGCOM or OBD Eleven  
Connect with module 5F – Control Head.  
Choose procedure 10 – Adaptation.  
Choose Perquisite Channel 6.  
Read stored value. By default it should be 0.  
Change value to 1 and save it.  
Read stored value. Now it should be 1.  
Exit



Audi MMI 3G AUX activation procedure

1. Turn key into II position and wait for the MMI 3G system to start. You can also use keyless buttons.
2. Press and hold buttons **MENU**(or **SETUP**) and **CAR**.
3. After couple of seconds hidden green menu will appear. You can now release the buttons.
4. Navigate to diagnose → settings → AMI/AUX.
5. Change the value of “AUX” “disabled” to “enabled” preserving other options.
6. Press **RETURN** and **CAR** buttons at the same time to exit hidden green menu.
7. Restart the MMI

### Q: MMI console is not responsive

A: Wrong CANBUS firmware version is installed in your system. Please contact us.

### Q: Original Audi factory interface screen goes black intermittently, and CarPlay, Android Auto is crashing often.

A: That is a bug of Auto Play Box app which is used for CarPlay, Android Auto.

Update both the Auto Play Box app and dongle firmware using the update feature inside the Auto Play Box app. Also, the dongle is very sensitive to physical connection quality. Thus make sure the black USB filter dongle is connected before the white dongle, connect the white dongle to the port of black USB filter. If connection is keep breaking, contact us.