

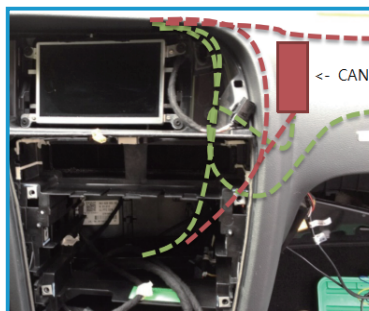
The Installer's guide for Realsun navigation



1 Cable route

2

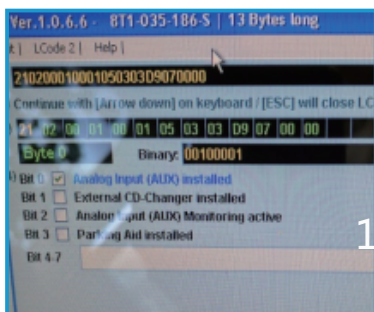
Audi's CAN BUS GATEWAY is the very strong source of Electromagnetic interference (EMI). Any cable route must avoid the CAN BUS in any cost. Otherwise, you will have weak WIFI signal, abnormal WIFI downlink speed, noise from speakers and abnormalities.



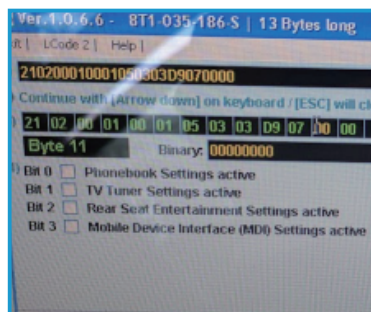
The Green is the proper route, and the red is the common mistake and bad route.

2 AMI coding for Concert and Symphony Radio

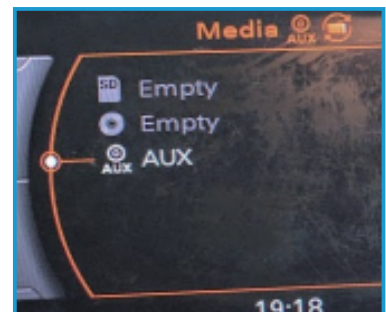
By default for some model years, AUX is inactive if AMI is present in the vehicle. Thus, it is necessary to code the Radio using coding tools like VAG COM cable and software. Using VAG COM, At Radio module-> coding-> long coding helper



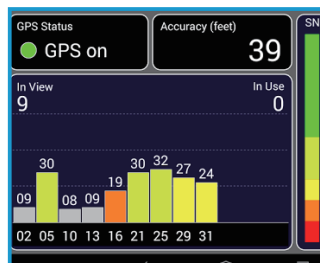
Byte 0, check AUX installed.



Byte 11, Uncheck Mobile Device Interface(MDI) setting active.



This should activate the AUX



3 Determining the best GPS Antenna location

Install the device temporarily, and using 'GPS test app' (Download from Play store, if not installed), check for the best reception point for the GPS Antenna.

Avg. signal strengths are -35~40dB for at least three satellites under clear sky. Usual locations are

- the front, center of dash board under windshield
- the upper center top of windshield behind room mirror

Please note that if GPS antenna is positioned skewing to either right or left side of vehicle, some navigation apps (such as Google Navigation) that uses 'heading prediction' will turn the map heading to the skewed direction every time the vehicle is at junction stop. Thus, it is important to locate the GPS antenna along the center line of the vehicle.



4 Mobile Antenna

The above is mobile antenna for the built-in cellular network modem. It should be installed on windshield if mobile network connection is necessary.