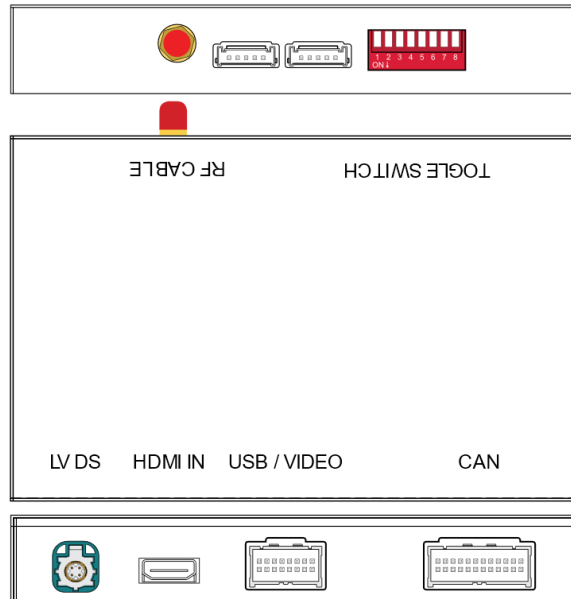


## RSNAV.com Wireless/Wired CarPlay & Android Auto Standalone Interface

**Warning: Professional installation recommended. Mask the working trim surfaces properly, otherwise, it will be scratched easily while installing!**



## Main Specifications



Input Voltage	12~16V DC
Rated Current	2A
Rated Power	24W
Material	Housing aluminum
Connection	USB
Control	Original car knob control, voice control
Working Temperature	-20°C ~ 80°C

Thank you for choosing RSNAV.com

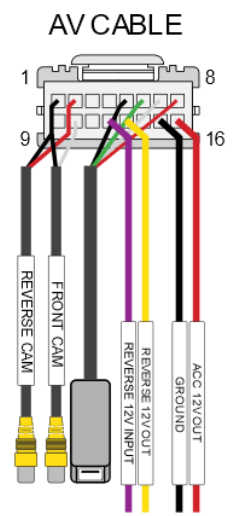
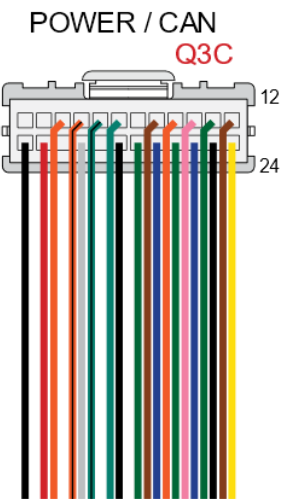
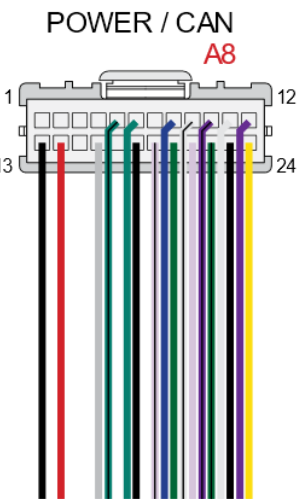
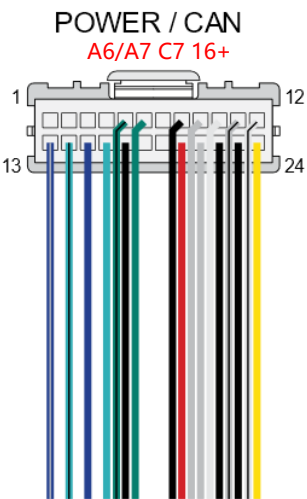
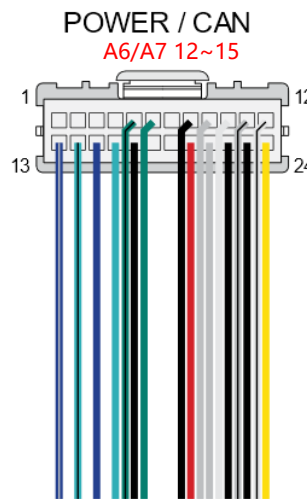
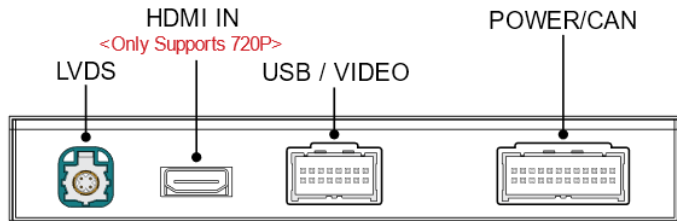
We offer the hardware limited warranty for 1 year for the date of purchase. This product has been tested and have passed under our strict quality control. Nevertheless, if the product or its components is proven defective due to material and workmanship, we will repair/replace your device free of charge within the warranty period.

The Warranty does not cover

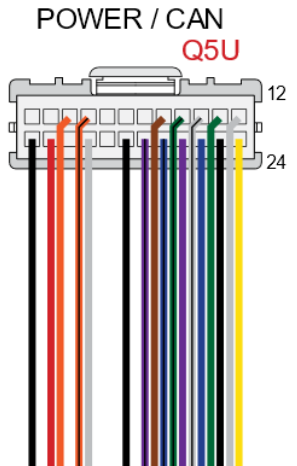
- Damage by act of God or natural disaster
- Damage while installing the product
- Damage by incomplete or improper installation

For more information on the legal and the warranty, please visit <https://rsnav.com/pages/warranty>

# Connector Assignment (Type A product for 3G MMI/ C7 MIB II)

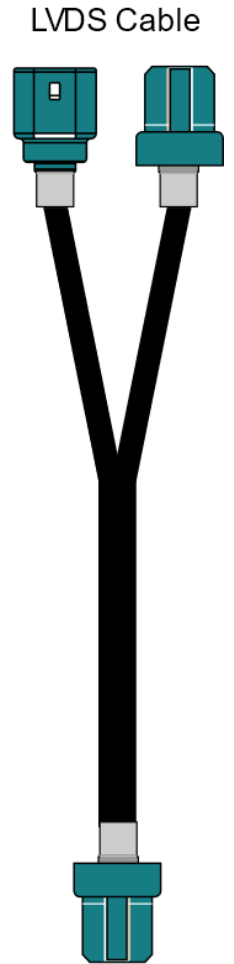
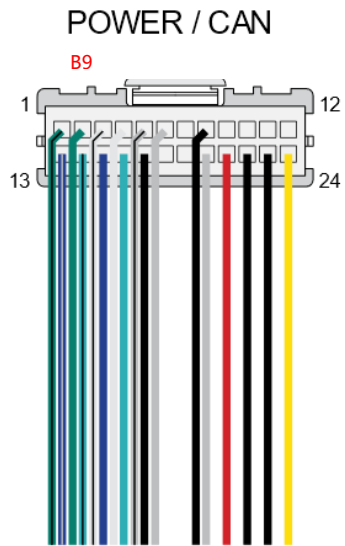
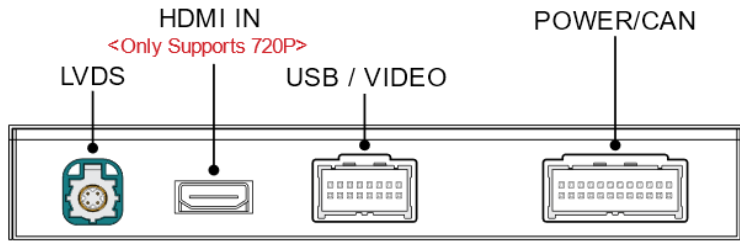


Power / Can Cable			
1	CAN_3_LOW	13	AUX_OUT_GND → (Car)
2	CAN_3_HIGH	14	AUX_OUT_R → (Car)
3	CAN_2_LOW	15	AUX_IN_R
4	CAN_2_HIGH	16	AUX_OUT_L → (Car)
5	CAN_1_LOW	17	AUX_IN_L
6	CAN_1_HIGH	18	AUX_IN_GND
7	AUX_IR	19	MIC_IN_N
8	GND	20	MIC_OUT_N → (Car)
9	MMI_OUT_TX → (Car)	21	MIC_IN_P
10	MMI_IN_RX	22	MIC_OUT_P → (Car)
11	MMI_OUT_RX → (Car)	23	GROUND
12	MMI_IN_TX	24	BATTERY POWER INPUT



AV CABLE			
1	CVBS_GROUND	9	
2	REVERSE_CAM_VIDEO_INPUT	10	FRONT_CAM_VIDEO_INPUT
3		11	
4	GROUND_SHIELD	12	REVERSE_12V_INPUT
5	USB_GND	13	REAR_12V_POWER_OUT
6	DATA +	14	
7	DATA -	15	GROUND
8	5V POWER	16	12V(ACC)_OUT

# Connector Assignment (Type B product for 8V, B9 MIB I, II)



Power / Can Cable			
1	CAN_3_LOW	13	AUX_OUT_GND → (Car)
2	CAN_3_HIGH	14	AUX_OUT_R → (Car)
3	CAN_2_LOW	15	AUX_IN_R
4	CAN_2_HIGH	16	AUX_OUT_L → (Car)
5	CAN_1_LOW	17	AUX_IN_L
6	CAN_1_HIGH	18	AUX_IN_GND
7	AUX_IR	19	MIC_IN_N
8	GND	20	MIC_OUT_N → (Car)
9	MMI_OUT_TX → (Car)	21	MIC_IN_P
10	MMI_IN_RX	22	MIC_OUT_P → (Car)
11	MMI_OUT_RX → (Car)	23	GROUND
12	MMI_IN_TX	24	BATTERY POWER INPUT

AV CABLE			
1	CVBS_GROUND	9	
2	REVERSE_CAM_VIDEO_INPUT	10	FRONT_CAM_VIDEO_INPUT
3		11	
4	GROUND_SHIELD	12	REVERSE_12V_INPUT
5	USB_GND	13	REAR_12V_POWER_OUT
6	DATA +	14	
7	DATA -	15	GROUND
8	5V POWER	16	12V(ACC)_OUT

# Type A product for 3G MMI/ C7 MIB II

## Car Compatibility Chart

Car Models	Production Year	Specific Models	Head Unit Ver.
Q3 (8U) A1	2014 ~ Present	6.5 inch	- RMC (Without OEM Navigation)
Q5 (8R)	2010 ~ 2017	7 inch	- 3G MMI - 3G MMI +
Q7 (4L)	2010 ~ 2015	7 inch	- 3G MMI
A4 (8K)	2010 ~ 2016	7 inch	- 3G MMI - 3G MMI +
A5 (8T)	2010 ~ 2015	7 inch	- 3G MMI +
A6 C6	2010 ~ 2015 2016+	7 inch	-3G MMI + - MIB II
C7, C7PA		8 inch	
A8 (D4)	2010 ~ 2017	8 inch	- 3G MMI +



AUDI A4 (B8) AUDI A5 (8T)



AUDI A7 (4G)



AUDI A8 (D4)



AUDI Q3 (8U)



AUDI Q5 (8R)



AUDI Q7 (4L)

# Type B product for 8V, B9 MIB I, II

## Car Compatibility Chart

Car Models	Production Year	Specific Models	Head Unit Ver.
A3 (8V)	2014 ~ Present	5.8 inch	- MSTD - MIB1,MIB2
		7 inch	
A4 (B8)	2016 ~ Present	7 inch	- MIB2
A5 (B9)	2016 ~ Present	7 inch	- MIB2
Q5 (80A)	2016 ~ Present	7 inch	- MIB2
Q7 (4M)	2016 ~ Present	7 inch	- MIB2



AUDI A3 (8V)



AUDI A3 (8V)



AUDI A4 (B9)



AUDI Q7 (4M)



# Type A product for 3G MMI/ C7 MIB II

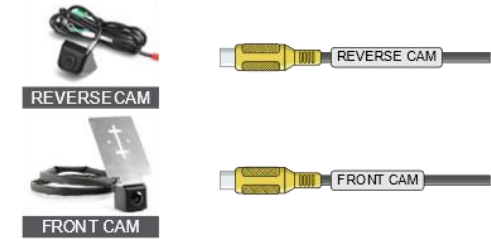
## Full Installation Diagram



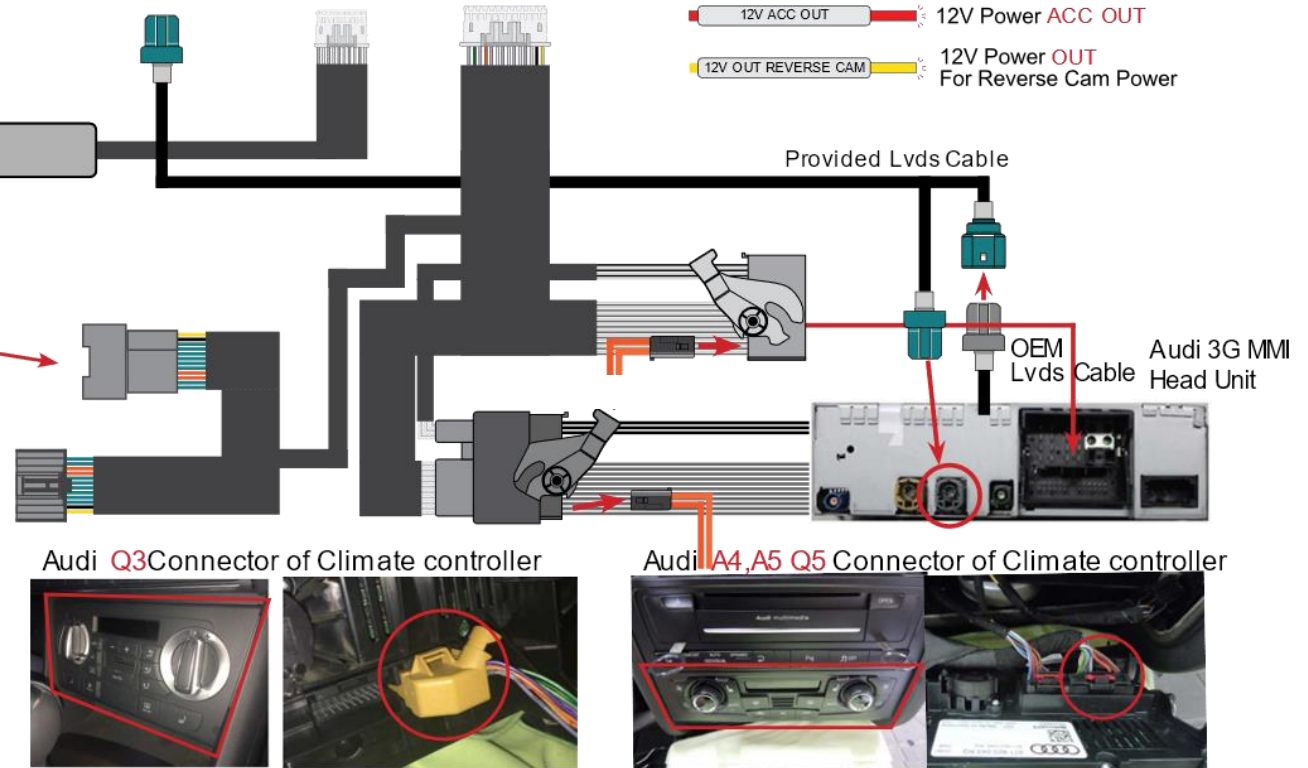
We recommend using for each phone manufacturer genuine cable Please. Never using "Adapter Type and Multi cable"



### AV Cable



- GROUND Ground
- REVERSE 12V IN Reverse Detect 12V IN
- 12V ACC OUT 12V Power ACC OUT
- 12V OUT REVERSE CAM 12V Power OUT For Reverse Cam Power



Audi A6,A7 Connector of Climate controller



Audi A8 Connector of Climate controller



Audi Q3 Connector of Climate controller



Audi A4,A5 Q5 Connector of Climate controller





## Type C product for Q3



- (1) LVDS output
- (2) LVDS input(factory wire)
- (3) Glovebox Bypass male
- (4) Glovebox Bypass female
- (5) Climate Control Bypass F
- (6) Climate Control Bypass M
- (7) Head unit Quad lock F
- (8) Head unit Quad lock M
- (9) USB, AV Cable
- (10) WiFi/BT Antenna: Do not stick to a metal surface.

(3) and (4) is for the device to learn current headlight status. If neglected battery will be drained completely.



# Type A product for 3G MMI/ C7 MIB II

## DIP Switch Settings



PIN	ON (▼)	OFF (▲)
1	Selection of car mode	
2		
3		
4		
5		
6		
7	Without Park Button	With Park Button
8	Without Bluetooth	With Bluetooth



Audi 3G MMI System						Year	Car Model	Screen Size	Note.
No.1	No.2	No.3	No.4	No.5	No.6				
ON (▼)	ON (▼)	OFF (▲)	ON (▼)	ON (▼)	OFF (▲)	2014 ~ present	Q3 (8U)	6.5 inch	RMC (Without OEM Navigation)
OFF (▲)	OFF (▲)	OFF (▲)	OFF (▲)	OFF (▲)	OFF (▲)	2013 ~ 2017	Q5 (8R)	7 inch	3G MMI+
						2012 ~ 2015	A4 (B8), A5(8T)	7 inch	3G MMI+
						2012 ~ 2015	A6 (C7), A7 (4G)	8 inch	3G MMI+
OFF (▲)	OFF (▲)	OFF (▲)	ON (▼)	ON (▼)	ON (▼)	2010 ~ 2012	Q5 (8R)	7 inch	3G MMI
						2010 ~ 2011	A4 (B8), A5(8T)	7 inch	3G MMI
OFF (▲)	OFF (▲)	ON (▼)	ON (▼)	OFF (▲)	ON (▼)	2010 ~ 2011	A6 C6	7 inch	3G MMI
OFF (▲)	OFF (▲)	ON (▼)	ON (▼)	ON (▼)	ON (▼)	2016 ~ 2018	A6/A7 (C7PA, FL)	8 inch	MIB II
OFF (▲)	OFF (▲)	OFF (▲)	OFF (▲)	ON (▼)	OFF (▲)	2010 ~ 2015	Q7 (4L)	7 inch	3G MMI
OFF (▲)	OFF (▲)	OFF (▲)	OFF (▲)	OFF (▲)	ON (▼)	2010 ~ 2017	A8 (D4)	8 inch	3G MMI+
ON (▼)	ON (▼)	ON (▼)	OFF (▲)	ON (▼)	OFF (▲)	TEST Mode			

# Type B product for 8V, B9 MIB I, II

## DIP Switch Settings



PIN	ON (▼)	OFF(▲)
1	Selection of car mode	
2		
3		
4		
5		
6		
7	Without Park Button	With Park Button
8	Without Bluetooth	With Bluetooth

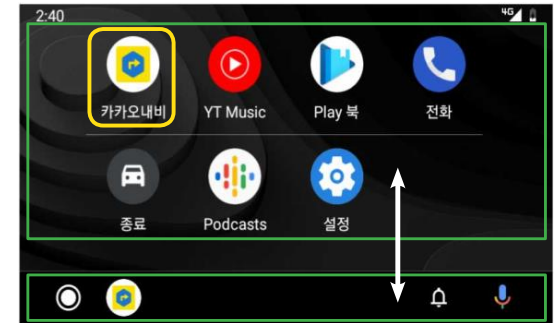
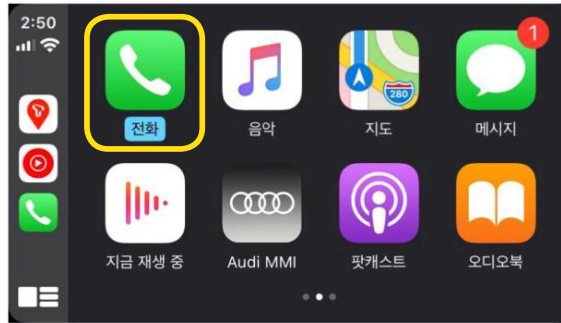


Audi MIB System						Year	Car Model	Screen Size	Note.
ON (▼)	ON (▼)	OFF(▲)	OFF(▲)	ON (▼)	ON (▼)	2014 ~ 2016	A3 (8V)	5.8	MSTD
ON (▼)	ON (▼)	ON (▼)	OFF(▲)	OFF(▲)	ON (▼)	2014 ~ 2016	A3 (8V)	7 inch	MIB1
ON (▼)	ON (▼)	OFF(▲)	ON (▼)	ON (▼)	OFF(▲)	2017 ~ present	A3 (8V)	5.8	MIB2
ON (▼)	ON (▼)	ON (▼)	OFF(▲)	OFF(▲)	OFF(▲)	2017 ~ present	A3 (8V)	7 inch	MIB2
ON (▼)	ON (▼)	OFF(▲)	ON (▼)	OFF(▲)	OFF(▲)	2016 ~ present	A4 (B9)	7 inch	MIB2
ON (▼)	ON (▼)	ON (▼)	OFF(▲)	ON (▼)	ON (▼)	2016 ~ present	Q5 (80A)	7 inch	MIB2
						2016 ~ present	Q7 (4M)	7 inch	MIB2
ON (▼)	ON (▼)	ON (▼)	OFF(▲)	ON (▼)	OFF(▲)	TEST Mode			

# Type A product for 3G MMI/ C7 MIB II

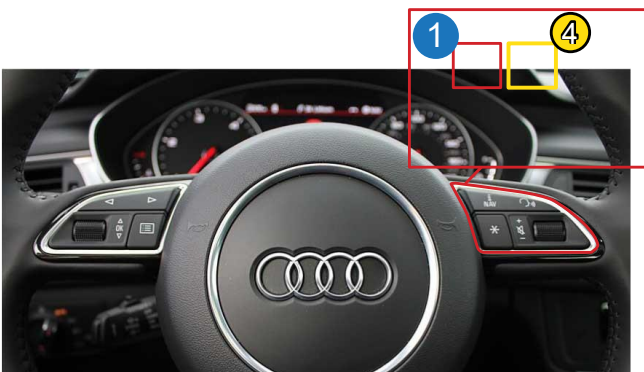


Audi A6 3G MMI Cont roller

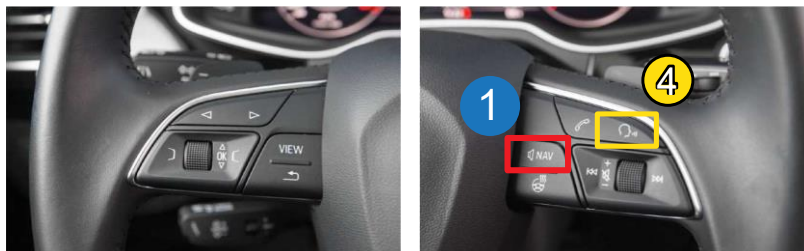
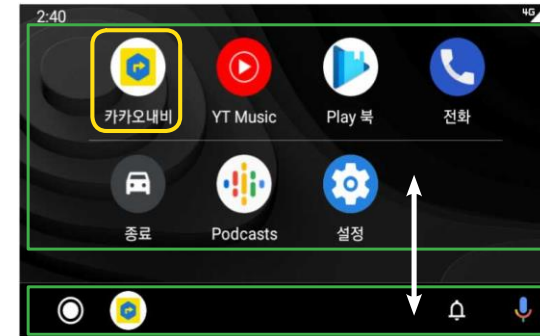
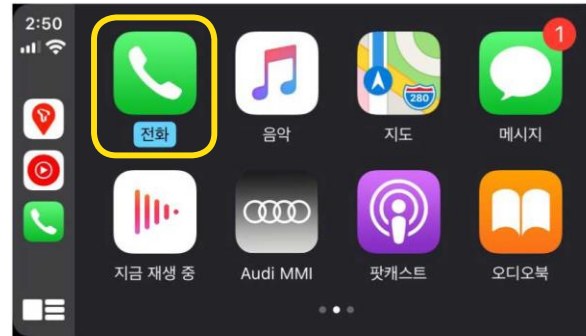


Audi A4 3G MMI Cont roller

Button	Function	Operation	Remarks
1 NAV	Changing Modes	Press the button 3 seconds	Order : OEM → Car Play
		Press the button short time	Return to the OEM mode in any modes.
2 Dial	Move the pointer	Turn the dial	Apple Car Play Function
Touch Pad	Move the pointer Up,Down	Touch the pad	Google Android Auto
			Google Android Auto
3 Back	Go back	Press the button	Apple Car Play Function
4 Voice	"Siri" "GoogleAssistant"	Press the button 3 seconds	Google Android Auto
			Google Android Auto



# Type B product for 8V, B9 MIB I, II



Button	Function	Operation	Remarks
1 NAV	Changing Modes	Press the button 3 seconds	Order : OEM → Car Play
		Press the button short time	Return to the OEM mode in any modes.
2 Dial	Move the pointer	Turn the dial	Apple Car Play Function
3 Back	Go back	Press the button	Google Android Auto
4 Voice	"Siri" "Google Assistant"	Press the button 3 seconds	Apple Car Play Function
			Google Android Auto

# Settings

**Language** —  English  Italian  Spanish  Turkish  Chinese

**Display** —  Brightness  Contrast  Chromaticity  Saturation

**Audio**

- Volume —  0 — 18
- EQ —  [5 sliders]
- Loudness —  ON  OFF
- Mic Echo PreConfig —  Default  Q5L  A6
- Microphone Volume —  0 — 24
- Microphone OP —  0 — 6
- Microphone PGA —  0 — 30
- Microphone Delay —  0 — 30
- AEC quality —  0 — 2

**Wifi Channel(reboot required)**

It function is stable wireless Carplay  
You can improve wireless connection  
by change wifi channel.

6 —  2.4Ghz — Basic wifi channel

36 —  5 Ghz — It's a global channel in the United States.

149 —  5 Ghz — It's a chinese channel.



**Reverse**

- Reverse Camera
  - Original — Original = OEM Rear view Camera
  - Aftermarket — Aftermarket = External Rear view Camera
- Reverse Line Detect — ON OFF
- Reverse Display Track — ON OFF
- Reverse Display Radar — ON OFF
- Front View Time — 0 — 10 —  


When you shift gear 'from R to D' or 'from P to D', it just works automatically during the activation time you selected
- Reverse Full Screen — ON OFF

**Right Drive** — ON OFF — ON = Left Steering Wheel  
OFF = Right Steering Wheel

**Camera Mirror** — ON OFF —

**Switch L/R Key to D/U Key** — ON OFF —

Left OFF Right



**Wheel key swap**

- No swap
- Swap
- Invalid

Carplay Left Scrup

0 10

Carplay Left Scrup

0 10

## System Update Settings

System Update

- Copy the update file "ISPBOOT.BIN" to the root directory of USB storage.
- Plug in the USB storage on the carplay box USB port
- Select the "System update" or Prees the BACK button 5sec "It will be restart and start update automatically"

**Please. Never power off the box on updating**

MCU Update

- Copy the update file "Upgrade.bin" to the root directory of USB storage.
- Plug in the USB storage on the carplay box USB port
- Select the "MCU update"

**Please. Never power off the box on updating**

Logo Image Update

### Logo Image file format

File Name : "no logo.bmp"      Size : 800 x 480

- Copy the update file "no logo.bmp" to the root directory of USB storage.
- Plug in the USB storage on the carplay box USB port

Carplay icon Update

### Carplay icon Image file format

File Name : "no cp\_back.png"      Size : 250 x 250

- Copy the update file "no logo.bmp" to the root directory of USB storage.
- Plug in the USB storage on the carplay box USB port

## For Type A product for 3G MMI

No sound? For 3G MMI Headunit Cars, **You must activate Aux/External Audio Input first** and must select External Audio Input from the 'Source' tab of 'Media' page in your original MMI

### Method 1.

If you have AMI to AUX adaptor, please plug it in to MMI/AMI plug to activate external audio source in Media tab of your Radio/MMI.



Plug this side to your AMI in glovebox or centre armrest

Do not plug this side to anything

**Method 2.** Enabling Aux input in MMI for the CarPlay interface

Preparation: Enable Green menu using VAGCOM or OBD Eleven

Connect with module 5F – Control Head.

Choose procedure 10 – Adaptation.

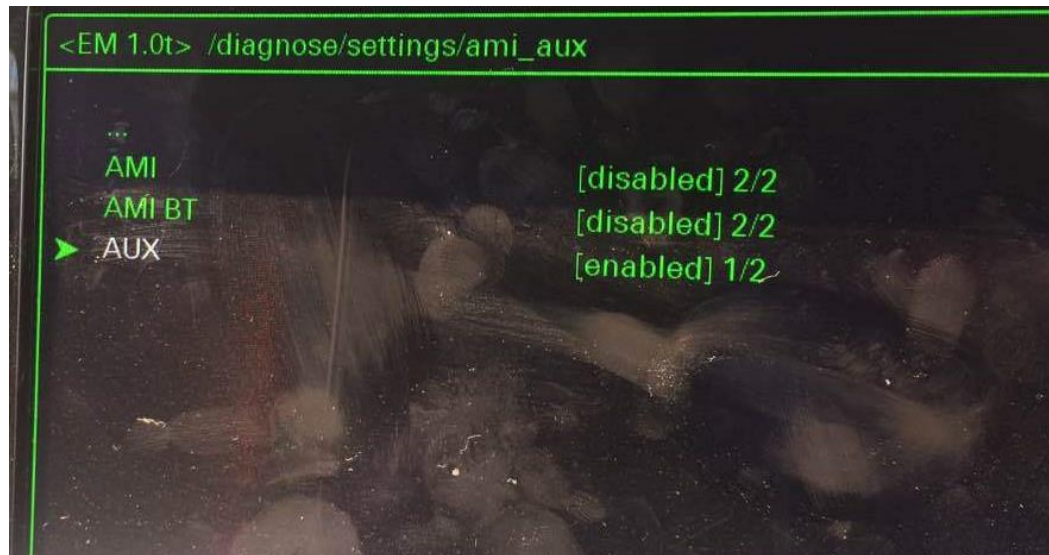
Choose Perquisite Channel 6.

Read stored value. By default it should be 0.

Change value to 1 and save it.

Read stored value. Now it should be 1.

Exit



Audi MMI 3G AUX activation procedure

1. Turn key into II position and wait for the MMI 3G system to start. You can also use keyless buttons.
2. Press and hold buttons MENU(or SETUP) and CAR.
3. After couple of seconds hidden green menu will appear. You can now release the buttons.
4. Navigate to diagnose → settings → AMI/AUX.
5. Change the value of “AUX” “disabled” to “enabled” preserving other options.
6. Press RETURN and CAR buttons at the same time to exit hidden green menu.
7. Restart the MMI

Audi MMI force restart procedure – 3G, 3G+



Locate button:

A. MENU(or SETUP) button

B. MMI Center knob

C. Upper-right soft button

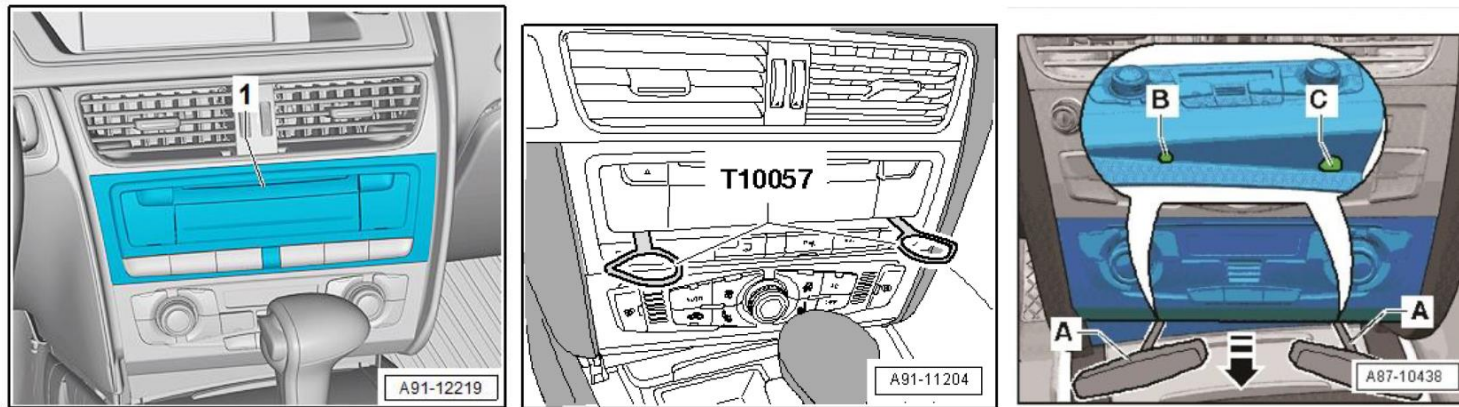
Press and hold those buttons at the same time.

After two seconds release buttons. Audi MMI screen will go black for few seconds and system will reboot.



## Car Specific Installation Aids

### B8 A4/A5/Q5 Cars



Using, VW radio removal tool, pull control unit 1 for information electronics –J794—1- out of mounting frame, and using -A- forklift tools, remove the climate control unit by pulling hook hole -B- and -C- together using the tools. Be careful when pulling out the climate unit as it is attached with four spring clips. Release and unplug necessary connectors at the behind of the control unit.

1. C7 A6/A6 Cars – Moderately frustrating to install. Please watch following video.

<https://youtu.be/5II76SFAhIU>

2. D4 A8 L/S8 Cars – Can be extremely frustrating as you need to unwrap the factory wiring tapping to separate quadlock cable from everything else. Watch following video

<https://youtu.be/b4wqYFHPZbg>

(Courtesy of CarsGadget)

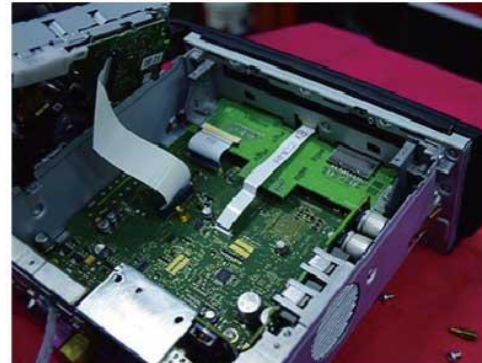
## AUDI Q3/A1 Without Factory Navigation



1. Remove The Navigation Host And Remove The Screws.



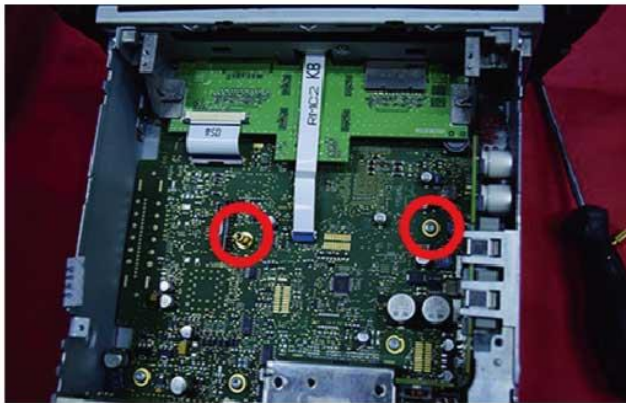
2. Remove The CD Host



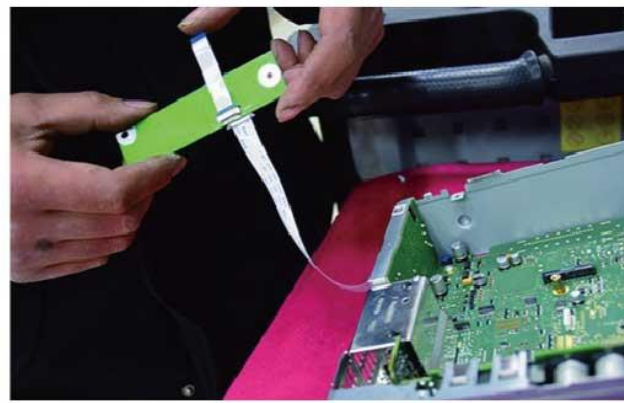
3. Remove The CD Player



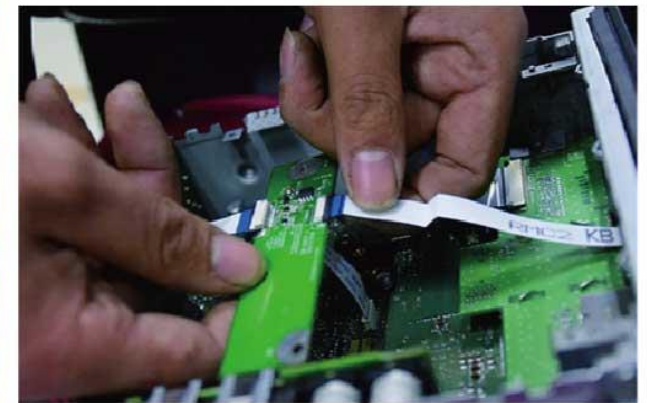
4. Picture After Disassembling



5. Remove The Screws And Install The Copper Column



6. Install the FPC adapter board [1], as shown above



7. Install the FPC adapter board [2], as shown above



# RSNAV.com Wireless/Wired CarPlay & Android Auto Standalone Interface



8. Fix The Adapter Plate



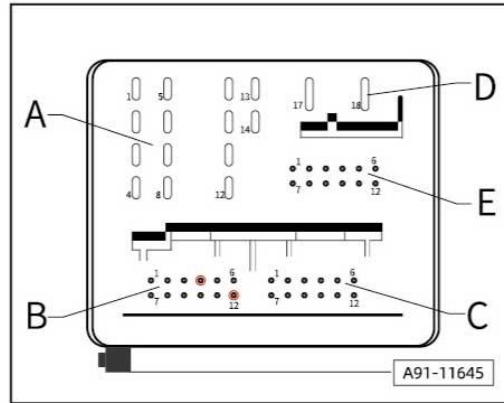
9. Reinstall The CD Player And Restore The Host



10. Install The External Adapter Plate , As Shown Above



If The Original Car Does Not Have a Bluetooth Phone Call Function, You'll Need To Buy An Extra Original Audi Microphone. The Pin Definition Is As Shown On The Right Picture.



B Connector 4 Feet For Mic+  
12 Feet For Mic-



Product Recommended Installation Location