



ALLURE

BOX & DISPLAY COMPANY

2023 - 2024

ALLURE

BOX & DISPLAY COMPANY

Allure was founded to give reality to a vision of unparalleled service to jewelry sellers.

Steeped with decades of expertise in all things jewelry packaging, our team will embrace your conception and assist with branding and delivering your packaging.

We keep pushing the bar to offer you more. From innovative packaging collections to easy ordering features, we seek to add joy into the process of showcasing your jewels.

We take pride in your success, and it has helped us grow to serve you better.

Presentation with Dedication™

It's our intention every time.



141 Lanza Ave, Bldg. 29N Garfield, NJ 07026
Visit our Showroom (by appointment)



212.807.7070



allurepack.com

TABLE OF CONTENTS

01

Jewelry Boxes
pages 1 - 46



69

Bags & gift boxes
pages 69-72



47

Pouches
pages 47-48



73

Gift Wrap
pages 73-76



49

Pearl Folders
matching to collections



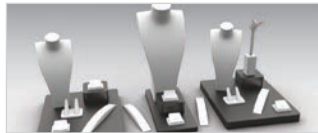
77

Tools & Supplies
pages 77-81



51

Displays
pages 51-67



82

Printing Colors
box insert styles



68

Jewelry Rolls
premium suede material



83

Custom Designs
Displays, boxes, packaging

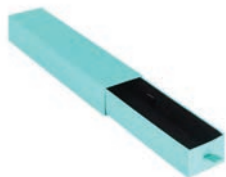




1 Ring



2 Earring/Pendant



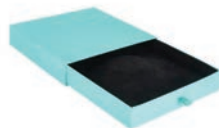
3 Bracelet



4 Reversible T-earring/
Pendant



5 Bracelet/Watch Pillow



6 Tab-style necklace



SLEEK Drawing on the concept of a sliding drawer, our wholesale cardboard drawer boxes fuse function with vitality. The interior of these jewelry drawer packaging boxes contain soft velvet to protect and enhance the jewelry encased. The drawer pull is fashioned of fine satin ribbon, adding texture and elegance. This box is exquisite in turquoise. Traditional color options of black, navy, and dark grey are also available.

AVAILABLE
COLORS



Turquoise
(TQ)



Navy Blue
(NB)



Black
(BK)



Dark Grey
(GR)

Model #	Insert	Insert style*	Size (WxDxH) in inches	Packed by	Unit Price
					12+ 144+
1 SK10	Small ring slot	a	2¼ x 2¼ x 1½	12	\$ 1.69 \$ 1.49
2 SK23	Pad-style earring	b	2½ x 2½ x 1	12	\$ 1.89 \$ 1.69
3 SK40	Tab-style bracelet	e	8¾ x 2 x 1¾	12	\$ 2.79 \$ 2.49
4 SK50	Reversible earring/pendant	f/g	3½ x 3½ x 1¾	12	\$ 2.39 \$ 2.19
5 SK68	Bracelet/watch pillow	k	3¾ x 3¾ x 2¾	12	\$ 2.99 \$ 2.75
6 SK80	Tab-style necklace	l	6½ x 6½ x 1¾	12	\$ 3.75 \$ 3.49

Box Specifications

Exterior finish	Matte paper	Interior material/color	Suede
Outer packaging	White sleeve	Box shell	Cardboard
Printing options	Hot stamp top of box		

* see page 82



SLEEK *Collection*

NEW
COLLECTION





1 Ring square



2 Ring hexagon



3 Earring



4 Pendant

FOREVER Crafted with a unique ribbed velvet that appears lustrous, our Forever collection exudes luxury that is befitting big moments. Take your pick of festive red, teal blue, dainty pink, and emerald green – all are colors that convey significance. Gift your customers with our Forever boxes for rings, pendants, and earrings. And because they are designed to be small in size for travel and discreet proposals, these elegant, velvet beauties are destined to deliver love in a box.

AVAILABLE
COLORS



Pink
(PK)



Red
(RD)



Teal Blue
(TB)



Green
(GN)

Model #	Insert	Insert style*	Size (WxDxH) in inches	Packed by	Unit Price	Unit Price
					12+	144+
1 FR10	Ring slot	a	2¼ x 2¼ x 2½	12	\$ 4.75	\$ 4.25
2 FR14	Hexagon ring slot	a	1¼ x 2½	12	\$ 4.99	\$ 4.50
3 FR20	Pad-style earring	b	2¼ x 2¼ x 2¼	12	\$ 4.75	\$ 4.25
4 FR30	Pad-style pendant	i	2⅞ x 3¼ x 1¼	12	\$ 5.75	\$ 5.25

Box Specifications

Exterior finish	Velvet	Interior material/color	Velvet
Outer packaging	2 piece cream packer	Box shell	Plastic
Printing options	Hot stamp inside box / outside packer		

* see page 82



FOREVER
Collection

NEW
COLLECTION





1 Ring



2 Earring



3 T-bar Earring/pendant



4 Bracelet



5 Pad style earring/pendant



6 Tab-style necklace

PINNACLE Mirror the glimmer of your jewelry by encasing it in a domed jewelry box that is wrapped in metallic, shimmering paper. Our pinnacle collection provides just the right amount of sparkle, without being too flashy. Smooth to the touch, these boxes are lined with a soft suede interior.

You can never have enough metallic colors when it comes to jewelry! Elevate your brand with our choice of gold, silver, or Onyx black offered in this collection. Consider imprinting your brand in a contrasting metallic color for a true jewelry-inspired theme.

AVAILABLE
COLORS



Gold
(GD)



Silver
(SL)



Black
(BK)

Model #	Insert	Insert style*	Size (WxDxH) in inches	Packed by	Unit Price	Unit Price
					12+	144+
1	PC10 Ring	a	2 x 2 x 1½	12	\$ 2.65	\$ 2.49
2	PC20 Earring	C	2 x 2 x 1½	12	\$ 2.75	\$ 2.59
3	PC26 T-bar/pendant	d/g	3 x 3 x 2	12	\$ 3.49	\$ 3.25
4	PC40 Tab-stye bracelet	e	8½ x 2½ x 1¼	12	\$ 5.69	\$ 5.39
5	PC50 Reversible earring/pendant	b	3½ x 3½ x 1½	12	\$ 4.25	\$ 3.99
6	PC80 Tab-stye necklace	l	7¾ x 7¾ x 1¾	12	\$ 9.99	\$ 9.49

Box Specifications

Exterior finish	Fancy metallic paper	Interior material/color	Suede
Outer packaging	2 piece white paper	Box shell	Pastic
Printing options	Hot stamp inside box/ top of packer		

* see page 82



PINNACLE *Collection*

NEW
COLLECTION





1 Ring



2 Earring (small)



3 Earring (medium)



4 Earring (large)



5 Earring/pendant



6 Bracelet



7 Earring/pendant



8 Flat pad



9 Pillow



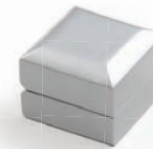
10 Necklace

IMPERIAL The Imperial Collection offered in bold blue, silver, or black with a high polish finish and plush leather interior is sure to impress. Your customers will revel with fine jewelry presented in these quality boxes. The rounded beveled detail tops reach far beyond the basic box. Choose from seven sizes to accommodate any piece in your inventory.

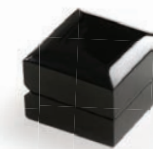
AVAILABLE
COLORS



Blue
(BL)



Silver
(SL)



Black
(BK)

Model #	Insert	Insert style*	Size (WxDxH) in inches	Packed by	Unit Price	
					12 - 144	144+
1	IM10 Ring Slot	a	2¼ x 2¼ x 1½	12	\$9.69	\$ 9.19
2	IM20 Pad-style earring	b	2½ x 2½ x 1½	12	\$9.69	\$ 9.19
3	IM25 T-style earring (medium)	d	3 x 3 x 1½	12	\$11.85	\$ 11.35
4	IM28 T-style earring (large)	d	4½ x 3¾ x 1½	12	\$ 12.99	\$ 12.39
5	IM30 Pad-style earring/pendant	b	3 x 3 x 1½	12	\$ 11.85	\$ 11.35
6	IM40 Tab-style Bracelet	e	9¼ x 2½ x 1½	12	\$ 13.99	\$ 13.49
7	IM50 Reversible pendant/earring	b	4½ x 3¾ x 1½	12	\$ 13.79	\$ 13.25
8	IM58 Flat Pad	a	4½ x 3¾ x 1½	12	\$ 13.79	\$ 13.25
9	IM68 Pillow	k	4¾ x 4¾ x 2¾	12	\$ 17.00	\$ 16.19
10	IM80 Tab-style Necklace	l	7½ x 7½ x 1¾	12	\$ 24.75	\$ 23.75

Box Specifications

Exterior finish	Glossy paint	Interior material/color	Cream leather
Outer packaging	2 pc matching packer	Box shell	Wood
Printing options	Hot stamp inside box/on packer		

* see page 82



IMPERIAL *Collection*





1 Ring



2 Earring



3 Pendant



4 Bracelet



5 Earring/pendant



6 Flat pad



7 Necklace

REGAL This classic rosewood of the Regal Collection insures that you never go wrong. High quality glossy wood finish, ever so slightly rounded corners, and raised top detail spell out sophistication. Soft suede interiors are designed with you in mind. The Regal Collection is the ideal economical solution for a top end presentation. Six useful sizes to choose from.

AVAILABLE
COLORS



Rosewood
(RW)

Model #	Insert	Insert style*	Size (WxDxH) in inches	Packed by	Unit Price	
					12 - 144	144+
1	RE10 Ring slot	a	2 1/8 x 2 1/4 x 1 1/8	12	\$ 8.40	\$ 8.09
2	RE20 Pad-style earring	b	2 1/8 x 2 1/4 x 1 1/8	12	\$ 8.40	\$ 8.09
3	RE30 Pad-style earring/pendant	g	2 1/2 x 3 3/4 x 1 1/2	12	\$ 9.70	\$ 9.45
4	RE40 Tab-style bracelet	e	9 3/8 x 2 x 1 1/2	12	\$ 13.50	\$ 13.25
5	RE50 Reversible earring/pendant	i	3 3/4 x 3 3/4 x 1 1/2	12	\$ 11.35	\$ 11.05
6	RE58 Flat pad	q	3 3/4 x 3 3/4 x 1 1/2	12	\$ 11.35	\$ 11.05
7	RE80 Tab-style Necklace	m	4 x 6 1/8 x 1 1/2	12	\$ 16.75	\$ 16.19

Box Specifications

Exterior finish	Glossy stained wood	Interior material/color	Ivory suede
Outer packaging	2 piece white packer	Box shell	Wood
Printing options	Hot stamp inside box/on packer		

* see page 82



REGAL *Collection*





1 Ring



2 Ring

FIANCE

Proposal ring box that is well concealed until the point of the question add surrealism to the moment. A compact and hidden engagement ring box can be kept in the pocket until the time is right. Then, without further ado, the pocket engagement ring box that alludes to her deepest wish can be whipped out and revealed to her.

Our flat engagement ring box also casts the spotlight on the ring within. Designed to rotate the diamond or gem, this discreet engagement ring box will give your buyer the confidence for his big move.

AVAILABLE
COLORS



Black
(BK)

	Model #	Insert	Insert style*	Size (WxDxH) in inches	Packed by	Unit Price	
						12 - 144	144+
1	FN10	Ring Slot	a	2 $\frac{5}{8}$ x 3 $\frac{3}{8}$ x 1	12	\$ 4.29	\$ 4.05
2	LD11	Ring Slot	a	2 $\frac{7}{8}$ x 2 $\frac{7}{8}$ x 1 $\frac{1}{8}$	12	\$ 7.99	\$ 7.50

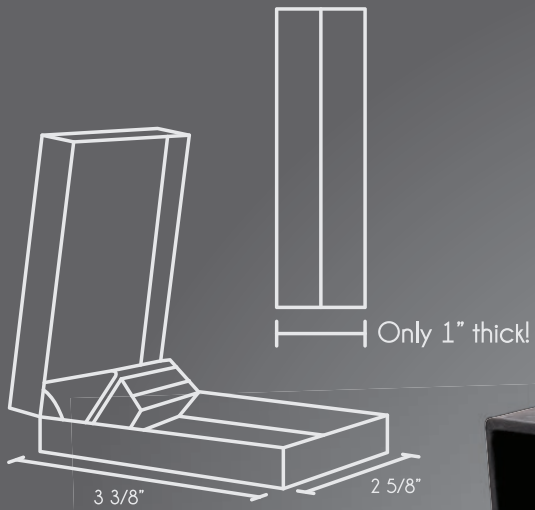
Box Specifications

Exterior finish	Matte soft touch	Interior material/color	Black velvet
Outer packaging	Black paper sleeve	Box shell	plastic
Printing options	Hot stamp inside box for FN10		

* see page 82



FIANCÉ *Collection*





1 Ring



2 Earring (small)



3 Earring (medium)



4 Pendant



5 Bracelet



6 Universal



7 Cufflink



8 Bangle



9 Pillow



10 Pendant



11 Necklace

OPULENT

Allure's Opulent Collection is designed with two novel colors: stunning bronze and fashionable charcoal grey. The hint of metallic is the crown atop this box. Project an air of on-trend with the high-quality soft leather found in the inner and outer of this box. Superior stitching and a matching outer box let your clients know that what is laying within is precious and extraordinary.

AVAILABLE
COLORS



Bronze
(BZ)¹



Charcoal Grey
(CG)¹



Black
(BK)²



White
(WT)²

¹Interior color in cream leatherette

²Interior color matches exterior leatherette

Model #	Insert	Insert style*	Size (WxDxH) in inches	Packed by	Unit Price	
					12 - 144	144+
1	OP10 Ring slot	a	2½ x 2½ x 2¾	12	\$ 4.89	\$ 4.25
2	OP20 Pad-style earring	c	¾ x 2½ x 1¾	12	\$ 4.89	\$ 4.25
3	OP25 T-style earring	d	¾ x ¾ x 2¼	12	\$ 6.45	\$ 5.95
4	OP30 Pad-style pendant	i	¾ x ¾ x 2¼	12	\$ 6.45	\$ 5.95
5	OP40 Tab-style bracelet	e	8½ x 2¼ x 1¾	12	\$ 7.50	\$ 6.99
6	OP50 Reversible pendant/earring	f/g	¾ x 4¼ x 2	12	\$ 6.75	\$ 6.19
7	OP55 Cufflink style pad	o	¾ x 2½ x 1¾	12	\$ 4.89	\$ 4.25
8	OP65 Standing bangle slot	h	1¼ x ¾ x ¾	12	\$ 6.25	\$ 5.75
9	OP68 Pillow	k	4½ x 4¼ x ¾	12	\$ 10.29	\$ 9.69
10	OP85 Long pendant	g	4¾ x 6¼ x 1¾	12	\$ 10.75	\$ 9.15
11	OP80 Tab-style Necklace	m	6¼ x 9¼ x 2¼	12	\$ 14.05	\$ 12.95

Box Specifications

Exterior finish	Metallic leatherette	Interior material/color	Leatherette/see above
Outer packaging	2 pc matching packer	Box shell	Plastic
Printing options	Hot stamp inside box/on packer		

* see page 82



OPULENT *Collection*





1 Ring



2 Earring (small)



3 Earring (medium)



4 Earring (large)



5 Earring/Pendant



6 Bracelet



7 Universal**



8 Cufflink



9 Bangle



10 Pillow



11 Necklace

CONTEMPORARY

An Allure exclusive, the brand new shape and atypical weave texture of the Contemporary Collection make this an outstanding choice for a signature box for your store. The trendy metallic colors are fashionable without being too flashy, keeping you at the cutting edge. Seven different sizes, soft velour inserts, and four colors give you all of the options you need to package your treasured jewelry collections.

AVAILABLE
COLORS



Silver
(SL)



Grey/blue
(GB)



Bronze
(BZ)



Wine
(WN)

Model #	Insert	Insert style*	Size (WxDxH) in inches	Packed by	Unit Price	
					12 - 144	144+
1	CO10 Ring Slot	a	2 x 2 1/8 x 2	12	\$ 4.89	\$ 4.25
2	CO20 Pad-style earring	b	2 x 2 1/8 x 2	12	\$ 4.89	\$ 4.25
3	CO25 T-style earring	d	2 3/4 x 2 3/4 x 1 1/2	12	\$ 5.35	\$ 4.85
4	CO28 T-style earring	d	3 1/2 x 3 3/4 x 1 1/4	12	\$ 7.69	\$ 7.29
5	CO30 Pad-style earring/pendant	b	2 3/4 x 2 3/4 x 1 1/2	12	\$ 5.35	\$ 4.85
6	CO40 Tab-style Bracelet	e	8 5/8 x 2 1/8 x 1 1/4	12	\$ 8.10	\$ 7.49
7	CO50 Reversible pendant/earring	b	3 1/2 x 3 3/4 x 1 1/4	12	\$ 7.69	\$ 7.29
8	CO55 Cufflink elastic	o	3 1/2 x 3 3/4 x 1 1/4	12	\$ 7.69	\$ 7.29
9	CO60 Bangle cuff	j	3 1/2 x 3 3/4 x 1 1/4	12	\$ 7.69	\$ 7.29
10	CO68 Pillow	k	3 3/4 x 3 3/4 x 2 1/2	12	\$ 8.49	\$ 7.99
11	CO80 Tab-style Necklace	l	7 1/2 x 7 1/2 x 1 1/4	12	\$ 9.69	\$ 8.65

Box Specifications

Exterior finish	Metallic textured paper	Interior material/color	Silver, Grey/Blue, Bronze= Ivory Suede Wine = Matching
Outer packaging	2 piece matching packer	Box shell	Plastic
Printing options	Hot stamp inside box/on packer		

* see page 82



CONTEMPORARY *Collection*



MAHOGANY FINISH



1 Ring (white insert)



2 Ring (black insert)



3 Ring



4 Ring (slim)



5 Earring (small)



6 Earring/T-bar



7 Flat pad



8 Bracelet



9 Earring/Pendant



10 Watch/ bangle



11 Necklace (small)



12 Necklace (large)

BLACK SMOOTH TOUCH

LIGHT BOXES The LED Collection features our most expressive box for all gift giving. Smooth and polished with a single light for brilliant display, these boxes contain the wow factor present in effective gifting. The textured outer box of a fine linen weave is the perfect addition to further convey your desire for impeccability.

Real
WOOD

AVAILABLE
COLORS



Mahogany
(ring box only)



Black
(BK)

Model #	Insert	Insert style*	Size (WxDxH) in inches	Packed by	Unit Price	
					12-144	144+
1	LM10-WT Ring slot	a	2 $\frac{3}{8}$ x 2 $\frac{1}{2}$ x 1 $\frac{1}{8}$	12	\$ 12.69	\$ 11.35
2	LM10-BK Ring slot	a	2 $\frac{3}{8}$ x 2 $\frac{1}{2}$ x 1 $\frac{1}{8}$	12	\$ 12.69	\$ 11.35
3	LD10 Ring slot	a	2 $\frac{1}{2}$ x 2 $\frac{1}{2}$ x 1 $\frac{1}{8}$	12	\$ 7.50	\$ 6.45
4	LD11 Ring slot	a	2 $\frac{7}{8}$ x 2 $\frac{7}{8}$ x 1 $\frac{1}{8}$	12	\$ 7.99	\$ 7.50
5	LD20 Pad-style earring	b	2 $\frac{1}{2}$ x 2 $\frac{1}{2}$ x 1 $\frac{1}{8}$	12	\$ 7.50	\$ 6.45
6	LD25 T-Bar	d	2 $\frac{5}{8}$ x 3 $\frac{3}{4}$ x $\frac{3}{4}$	12	\$ 8.99	\$ 8.25
7	LD30 Flat pad	i	2 $\frac{1}{2}$ x 3 $\frac{3}{8}$ x 1 $\frac{1}{8}$	12	\$ 8.59	\$ 7.85
8	LD40 Elastic-style bracelet	e	9 x 2 $\frac{1}{8}$ x 1 $\frac{1}{8}$	12	\$ 10.75	\$ 10.15
9	LD50 Pad-style earring/pendant	b	3 $\frac{3}{8}$ x 3 $\frac{3}{8}$ x 1 $\frac{3}{4}$	12	\$ 10.75	\$ 10.15
10	LD60 Watch/bangle cuff	j	3 $\frac{3}{4}$ x 3 $\frac{3}{4}$ x 1 $\frac{1}{8}$	12	\$ 11.25	\$ 10.65
11	LD80 Tab-style necklace	m	4 $\frac{1}{4}$ x 6 $\frac{1}{8}$ x 1 $\frac{1}{8}$	12	\$ 13.99	\$ 12.69
12	LD90 Tab-style necklace	l	7 $\frac{1}{2}$ x 7 $\frac{1}{2}$ x 1 $\frac{1}{8}$	6	\$ 16.75 (6-72)	\$ 15.09 (72+)

Box Specifications (mahogany)

Exterior finish	Lacquered wood	Interior material/color	Leatherette
Outer packaging	2 piece white packer	Box shell	Plastic
Printing options	Hot stamp inside box/on packer		

Box Specifications (black)

Exterior finish	Smooth Touch	Interior material/color	Velvet
Outer packaging	2pc black linen texture	Box shell	Plastic
Printing options	Hot stamp inside box/on packer		

* see page 82



LED LIGHT *Collection*





1 Ring (small)



2 Ring (medium)

NEW



3 Ring (large)



4 Ring dish



5 Earring (small)



6 Earring (medium)



7 Earring (long)



8 Earring/Pendant



9 Bracelet



10 Universal



11 Flat pad
(not in blue)



12 Bangle



13 Bangle/Watch



14 Necklace



15 Pearl Folders

NEW

VOGUE

Ultra smooth finish on the outer paper gives the crisp edges of the Vogue Collection an aura of luxury, which continues into the box with a deluxe suede interior. The hard matching outer sleeve along with the suede interior adds a professional touch. This distinctive box is available in ten functional shapes. The new modern dark grey color is a unique Allure addition.

AVAILABLE
COLORS



Brown
(BN)



Dark Grey
(GR)



Black
(BK)



Navy Blue
(NB)

NEW
COLOR

Model #	Insert	Insert style*	Size (WxDxH) in inches	Packed by	Unit Price	
					12 - 144	144+
1	VG11 Small ring slot	a	1 7/8 x 2 x 1 3/4	12	\$ 5.35	\$ 4.89
2	VG13 Medium Ring Slot	a	2 1/2 x 2 1/2 x 2 1/4	12	\$ 5.95	\$ 5.50
3	VG10 Large ring slot	a	3 1/4 x 3 1/4 x 1 3/4	12	\$ 7.50	\$ 6.95
4	VG18 Large ring dish	p	3 1/4 x 3 1/4 x 2	12	\$ 7.50	\$ 7.19
5	VG20 Pad-style earring	b	1 7/8 x 2 x 1 3/4	12	\$ 5.35	\$ 4.89
6	VG25 T-style earring	d	3 1/4 x 3 1/4 x 2	12	\$ 7.50	\$ 7.19
7	VG28 T-style earring	f	3 1/2 x 4 1/2 x 1 1/2	12	\$ 8.59	\$ 7.99
8	VG30 Pad-style earring	b	3 1/4 x 3 1/4 x 2	12	\$ 7.50	\$ 7.19
9	VG40 Tab-style bracelet	e	8 1/2 x 2 1/4 x 1 3/4	12	\$ 10.75	\$ 9.95
10	VG50 Reversible pendant/earring	b	4 1/4 x 4 1/4 x 2 3/8	12	\$ 10.75	\$ 9.95
11	VG58 Flat pad	q	4 1/4 x 4 1/4 x 2 3/8	12	\$ 10.75	\$ 9.95
12	VG65 Bangle	j	4 1/4 x 4 1/4 x 3 1/8	12	\$ 12.90	\$ 12.39
13	VG68 Bangle/watch pillow	k	4 1/8 x 4 1/8 x 3 1/8	12	\$ 12.90	\$ 12.39
14	VG90 Tab-style necklace	l	7 3/4 x 7 3/4 x 2 3/8	12	\$ 26.49	\$ 24.85
15	VGFL Soft touch leather		6 x 8 3/4	12	\$ 7.95	\$ 7.50

Exterior finish	Matte paper	Interior material/color	Cream suede
Outer packaging	Matching hard sleeve	Box shell	Plastic
Printing options	Hot stamp inside box/on sleeve		

* see page 82



VOGUE
Collection





1 Ring



2 Earring (small)



3 Earring (medium)



4 Bracelet



5 Pendant/Earring (large)



6 Pillow



7 Necklace

WOVEN Incorporating elements of the delicate fibers of nature, the Woven Collection is all about appreciating the finer things in life. The linen jewelry boxes of this collection are inspired by the beauty of nature's strands. With a woven linen texture, these boxes create a stunning backdrop for the jewels when opened. The interior of the weaved boxes feature a soft suede of corresponding color to enhance the luxurious appeal. Two bleached color options of natural beige and light grey complete the organic character of this collection.

AVAILABLE
COLORS



Beige
(BG)



Grey
(GR)

Model #	Insert	Insert style*	Size (WxDxH) in inches	Packed by	Unit Price	
					12 - 144	144+
1	WO10 Ring Slot	a	2¼ x 2¼ x 2	12	\$ 3.50	\$ 3.35
2	WO20 Pad-style earring	b	2¼ x 2¼ x 2	12	\$ 3.50	\$ 3.35
3	WO26 T-style earring	d	2¾ x 3¼ x 1¾	12	\$ 4.89	\$ 4.65
4	WO40 Tab-style Bracelet	e	8¾ x 2¼ x 1¼	12	\$ 7.50	\$ 6.99
5	WO50 Pad-style earring/pendant	b	3½ x 3¾ x 1¾	12	\$ 5.95	\$ 5.59
6	WO68 Pillow	k	3¾ x 4 x 2¾	12	\$ 8.50	\$ 7.95
7	WO80 Tad-style necklace	l	7¼ x 7¼ x 1¾	12	\$ 9.50	\$ 8.75

Box Specifications

Exterior finish	Linen fabric	Interior material/color	Matching suedette
Outer packaging	2 piece matching packer	Box shell	Plastic
Printing options	Hot stamp inside box/on packer		

* see page 82



WOVEN *Collection*





1 Ring



2 Earring (small)



3 Earring (medium)



4 Earring/Pendant



5 Bracelet



6 Universal



7 Bangle/watch



8 Necklace

EXQUISITE

The elegant baroque lines on the leather of the Exquisite Collection broadcasts the superior quality of the jewelry inside before the box is even opened. The leather soft interior along with the two-piece outer box that matches the unique texture of this collection, deem this box the optimal choice. Offered in eight convenient sizes and three classic colors, with optional logo stamping.

AVAILABLE
COLORS



Brown
(BN)



Green
(GN)



Black
(BK)

Model #	Insert	Insert style*	Size (WxDxH) in inches	Packed by	Unit Price	
					12 - 144	144 +
1	EX10 Ring Slot	a	2¼ x 2¼ x 1⅞	12	\$ 4.29	\$ 3.79
2	EX20 Pad-style earring	b	2¼ x 2¼ x 1⅞	12	\$ 4.29	\$ 3.79
3	EX25 T-style earring	d	2⅞ x 3¼ x 1⅞	12	\$ 4.99	\$ 4.65
4	EX30 Pad-style earring/pendant	b	2⅞ x 3¼ x 1⅞	12	\$ 4.99	\$ 4.65
5	EX40 Tab-style Bracelet	e	9⅞ x 2⅞ x 1½	12	\$ 7.50	\$ 6.95
6	EX50 Pad-style earring/pendant	b	3¾ x 3¾ x 1⅞	12	\$ 6.45	\$ 5.89
7	EX60 Bangle/watch cuff	j	3¾ x 3¾ x 2	12	\$ 6.45	\$ 5.89
8	EX80 Tab-style Necklace	i	7¼ x 7¼ x 2	12	\$ 9.19	\$ 8.59

Box Specifications

Exterior finish	Glossy textured paper	Interior material/color	White leather
Outer packaging	2 piece matching packer	Box shell	Plastic
Printing options	Hot stamp inside box/on packer		

* see page 82



EXQUISITE
Collection





1 Ring



2 Double Ring



3 Earring



4 Earring (medium)



5 Earring (large)



6 Earring/Pendant



7 Bracelet



8 Universal



9 Bangle



10 Necklace



11 pearl folders (sm)



12 pearl folders (lrg)

ORNATE Velvety velour and cushioned curves are the star of the Ornate Collection. If touch is your fixation, these soft boxes offered in four deep, rich colors are right for you. Available in eight convenient sizes with matching color interiors. Each box comes nestled in a matching two-piece outer shell. Choose your logo stamping on the inside of the box and/or on the outer shell to make these boxes distinctively yours.

AVAILABLE
COLORS



Black
(BK)



Burgundy
(BY)



Navy Blue
(NB)



Brown
(BN)



Grey
(GR)

Model #	Insert	Insert style*	Size (WxDxH) in inches	Packed by	Unit Price	
					12 - 144	144+
1	OR10 Ring slot	a	2¼ x 2¼ x 1⅞	12	\$ 4.29	\$ 3.75
2	OR15 Double ring slot	a	3 x 2¼ x 1⅞	12	\$ 5.15	\$ 4.55
3	OR20 Pad-style earring	b	2¼ x 2¼ x 1⅞	12	\$ 4.29	\$ 3.75
4	OR25 T-style earring	f	2⅞ x 3¼ x 1½	12	\$ 4.99	\$ 4.65
5	OR28 T-style earring long	f	3 x 3⅞ x 1⅞	12	\$ 5.19	\$ 4.79
6	OR30 Pad-style earring/pendant	b	2⅞ x 3¼ x 1½	12	\$ 4.99	\$ 4.65
7	OR40 Tab-style bracelet	e	9⅞ x 2⅞ x 1½	12	\$ 7.50	\$ 6.99
8	OR50 Pad-style earring/pendant	b	3¼ x 3¼ x 2	12	\$ 6.45	\$ 5.89
9	OR60 Bangle/watch cuff	j	3¼ x 3¼ x 2	12	\$ 7.50	\$ 6.99
10	OR80 Tab-style necklace	l	7⅞ x 7⅞ x 2	12	\$ 10.55	\$ 9.69
11	FS11 Suede Folder	n/a	5½ x 6¾	12	\$ 5.69	n/a
12	FS12 Suede Folder	n/a	6 x 8¾	12	\$ 6.79	n/a

Box Specifications

Exterior finish	Velour	Interior material/color	Matching color velour
Outer packaging	2 piece matching packer	Box shell	Plastic
Printing options	Hot stamp inside box/on packer		

* see page 82



ORNATE *Collection*





1 Ring



2 Double Ring



3 Earring



4 Earring (medium)



5 Earring



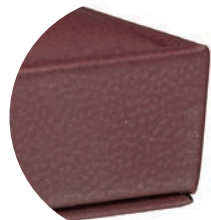
6 Bracelet



7 Universal



8 Necklace



Close-up to show finish

SPLENDOR

The Splendor Collection's earmarks are the rich cream outer boxes that are elegantly tied with a satin bow. The boxes are crafted from supple leatherette with corresponding color interiors in the same leatherette. The Supreme Collection also contains a double ring box that is appealing to many for engagement sets or the like. These boxes will express your gratification to the customer while adorning the gift within.

AVAILABLE
COLORS



Burgundy
(BY)



Brown
(BN)



Grey
(GR)

Model #	Insert	Insert style*	Size (WxDxH) in inches	Packed by	Unit Price	
					12 - 144	144+
1	SP10 Ring slot	a	2 x 2 x 1½	12	\$ 4.05	\$ 3.49
2	SP15 Double ring slot	a	2¾ x 2 x 1½	12	\$ 4.29	\$ 3.75
3	SP20 Pad-style earring	b	2 x 2 x 1½	12	\$ 4.05	\$ 3.49
4	SP25 T-style earring	f	2¾ x 3¾ x 1½	12	\$ 4.59	\$ 4.09
5	SP30 Pad-style earring/pendant	b	2¾ x 3¾ x 1½	12	\$ 4.59	\$ 4.09
6	SP40 Tab-style bracelet	e	8¾ x 2¼ x 1¼	12	\$ 7.29	\$ 6.75
7	SP50 Pad-style earring/pendant	b	3½ x 3½ x 1½	12	\$ 5.95	\$ 5.39
8	SP80 Necklace	l	7¾ x 7½ x 1¾	12	\$ 15.09	\$ 14.05

Box Specifications

Exterior finish	Leatherette	Interior material/color	Matching leatherette
Outer packaging	2 piece cream packer w/ matching ribbon	Box shell	Plastic
Printing options	Hot stamp inside box/on packer		

* see page 82



SPLENDOR *Collection*





1 Ring



2 Earring



3 Earring (medium)



4 Earring/Pendant



5 Bracelet



6 Universal**



7 Pendant



8 Necklace



9 pearl folders (sm)



10 pearl folders (lrg)

CLASSIC

Sometimes a simple hinged box is all you need. The Classic Collection offers function and quality in stylish leatherette to get your basics covered. Offered in elementary black and white with a matching interior in ten useful shapes. These supple, cushioned boxes can be customized with your logo to keep your brand in the lead.

AVAILABLE
COLORS



White
(WT)



Black
(BK)

Model #	Insert	Insert style*	Size (WxDxH) in inches	Packed by	Unit Price	
					12 - 144	144+
1	CL10 Ring slot	a	2 x 2½ x 1¾	12	\$ 2.99	\$ 2.59
2	CL20 Pad-style earring	b	2 x 2 x 1½	12	\$ 2.99	\$ 2.59
3	CL25 T-style earring	f	2½ x 3¼ x 1¼	12	\$ 3.55	\$ 3.25
4	CL30 Pad-style earring/pendant	b	2½ x 3¼ x 1¼	12	\$ 3.55	\$ 3.25
5	CL40 Tab-style bracelet	e	8½ x 2½ x 1½	12	\$ 5.35	\$ 4.89
6	CL50 Reversible pendant/earring	b	3½ x 3½ x 1½	12	\$ 4.59	\$ 4.15
7	CL85 Long pendant	g	4¾ x 6¼ x 1¾	12	\$ 6.95	\$ 6.59
8	CL80 Tab-style necklace	n	7¼ x 4¾ x 1¾	12	\$ 8.59	\$ 8.29
9	FL11 Leatherette Folder	n/a	5½ x 6¾	12	\$ 5.69	n/a
10	FL12 Leatherette Folder	n/a	6 x 8¾	12	\$ 6.79	n/a

Box Specifications

Exterior finish	Leatherette	Interior material/color	Matching leatherette
Outer packaging	2 piece matching packer	Box shell	Plastic
Printing options	Hot stamp inside box/on packer		

* see page 82

CLASSIC *Collection*





1 Ring



2 Double ring



3 Earring (small)



4 Earring (medium)



5 Earring (long)



6 Earring/Pendant



7 Bracelet



8 Bangle



9 Earring/pendant



10 Flat pad
(not in navy)



11 Necklace



12 Necklace (large)

VINTAGE

The familiar pattern of the metallic borders on these superbly crafted hinged boxes signals the luxury hidden within. The Vintage Collection from Allure conforms to our high-end standards and is offered in twelve useful shapes. The velvety interior of the vibrant red is a crisp contrasting white, while the black and navy options feature matching interiors.

AVAILABLE
COLORS



Red
(RD)



Black
(BK)



Navy
(NB)



Green
(GN)

Model #	Insert	Insert style*	Size (WxDxH) in inches	Packed by	Unit Price	
					12 - 144	144+
1	VN10 Ring slot	a	1 7/8 x 2 x 1 1/2	12	\$ 2.15	\$ 1.99
2	VN15 Double ring slot	a	2 7/8 x 1 7/8 x 1 1/2	12	\$ 2.75	\$ 2.49
3	VN20 Pad-style earring	c	1 7/8 x 2 x 1 1/2	12	\$ 2.15	\$ 1.99
4	VN25 T-style earring	d	2 1/2 x 2 5/8 x 1	12	\$ 2.69	\$ 2.45
5	VN28 T-style earring	f	3 x 3 3/8 x 1 3/8	12	\$ 3.25	\$ 2.95
6	VN30 Pad-style earring/pendant	b	2 3/8 x 3 1/8 x 1	12	\$ 2.69	\$ 2.45
7	VN40 Tab-style bracelet	e	8 3/4 x 2 1/4 x 7/8	12	\$ 3.79	\$ 3.39
8	VN65 Standing bangle slot	h	2 x 3 3/8 x 3 3/4	12	\$ 3.25	\$ 2.95
9	VN50 Reversible earring/pendant	b	3 3/8 x 3 3/8 x 1 1/4	12	\$ 3.25	\$ 2.95
10	VN58 Flat pad	?	3 3/8 x 3 3/8 x 1 1/4	12	\$ 3.25	\$ 2.95
11	VN80 Tab-style necklace	n	6 1/8 x 4 3/8 x 1 3/8	12	\$ 7.50	\$ 6.75
12	VN90 Tab-style necklace	n	6 5/8 x 6 5/8 x 1	12	\$ 9.39	\$ 8.75

Box Specifications

Exterior finish	Gloss paper with gold print	Interior material/color	Suede matches exterior color**
Outer packaging	2 piece white packer	Box shell	Plastic
Printing options	Hot stamp inside box on satin window/on packer		

* see page 82

** Red boxes have white interior



VINTAGE *Collection*





1 Ring



2 Earring



3 Earring (Medium)



4 Earring (long)



5 Pendant



6 Bracelet



7 Earring pendant



8 Necklace



9 pearl folders (sm)



10 pearl folders (lrg)

PROVIDENT

Clean lines and soft curves define the simple, understated elegance of the Provident Collection. These leatherette boxes constructed with quality metal are offered in smooth black and creamy white with matching leatherette inserts. Choose from eight universal shapes. Custom logo stamping on the satin top interior or outer box will make your brand displayed in a stark fashion.

AVAILABLE
COLORS



White
(WT)



Black
(BK)

Model #	Insert	Insert style*	Size (WxDxH) in inches	Packed by	Unit Price	
					12 - 144	144+
1	PR10 Ring slot	a	1 3/4 x 2 1/4 x 1 1/8	12	\$ 1.85	\$ 1.49
2	PR20 Pad-style earring	c	1 3/4 x 2 1/4 x 1 1/8	12	\$ 1.85	\$ 1.49
3	PR25 T-style earring	d	2 5/8 x 2 5/8 x 1 1/4	12	\$ 2.49	\$ 2.19
4	PR28 Long T-style earring	f	2 3/4 x 3 3/8 x 1 1/8	12	\$ 3.00	\$ 2.59
5	PR30 Flat pad	g	2 5/8 x 3 1/8 x 1 1/8	12	\$ 2.49	\$ 2.19
6	PR40 Tab-style bracelet	e	8 x 2 x 1 1/8	12	\$ 3.25	\$ 2.95
7	PR50 Reversible earring/pendant	i	3 3/8 x 3 1/4 x 1 1/2	12	\$ 3.79	\$ 3.39
8	PR80 Tab-style necklace	n	7 x 4 1/4 x 1 1/8	12	\$ 5.95	\$ 5.39
9	FL11 Leatherette Folder	n/a	5 1/2 x 6 3/4	12	\$ 5.69	n/a
10	FL12 Leatherette Folder	n/a	6 x 8 3/4	12	\$ 6.79	n/a

Box Specifications

Exterior finish	Leatherette	Interior material/color	Matching leatherette
Outer packaging	2 piece white packer	Box shell	Metal
Printing options	Hot stamp inside box on satin window/on packer		

* see page 82



PROVIDENT *Collection*





1 Ring



2 Earring



3 Earring (medium)



4 Earring (long)



5 Pendant



6 Bracelet



7 Universal



8 Necklace

ECHELON If a neat look and a textured feel are what you are looking for, the Echelon Collection has the box for you. Taking the lead from the Provident collection, these hinged boxes are velvety soft outside and in, with matching inserts in three rich colors. Eight box shapes with logo stamping offered on the interior satin or outer shell to suit your needs. Luxurious brown is our new color for this popular collection.

AVAILABLE
COLORS



Black
(BK)



Navy Blue
(NB)



Brown
(BN)

Model #	Insert	Insert style*	Size (WxDxH) in inches	Packed by	Unit Price	
					12 - 144	144+
1	EC10 Ring slot	a	1 7/8 x 2 1/4 x 1 1/8	12	\$ 1.85	\$ 1.49
2	EC20 Pad-style earring	c	1 7/8 x 2 1/4 x 1 1/8	12	\$ 1.85	\$ 1.49
3	EC25 T-style earring	d	2 3/8 x 2 3/8 x 1 1/8	12	\$ 2.49	\$ 2.19
4	EC28 T-style earring	f	2 3/4 x 3 5/8 x 1 1/8	12	\$ 3.00	\$ 2.59
5	EC30 Flat pad	g	2 3/8 x 3 1/4 x 1 1/8	12	\$ 2.49	\$ 2.19
6	EC40 Tab-style bracelet	e	8 x 2 x 1 1/8	12	\$ 3.19	\$ 2.95
7	EC50 Flat pad	q	3 7/8 x 3 1/4 x 1 1/2	12	\$ 3.79	\$ 3.39
8	EC80 Tab-style necklace	n	7 1/8 x 4 1/4 x 1 1/8	12	\$ 6.20	\$ 5.65

Box Specifications

Exterior finish	Velour	Interior material/color	Matching velour
Outer packaging	2 piece white packer	Box shell	Metal
Printing options	Hot stamp inside box/on packer		

* see page 82



ECHELON *Collection*





1 Ring



2 Double Ring / Large Hoop / Cufflink



3 Earring / Pendant



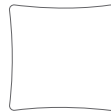
4 Pendant / Ring



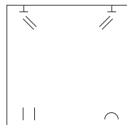
5 Bracelet



6 Pillow



7 Necklace



GLAMOUR

Luxury and silk have always been a pair. The Glamour Collection features a perfectly constructed box that is complemented by an impressive sheen of silky splendor. The delicate lines attributed to the fineness of the material tell of your commitment to quality and value. This collection boasts flexibility with the inserts since they can be used for a variety of items. It is available in seven popular sizes and in rich tones of purple, ivory, silver-grey, and navy blue.

AVAILABLE COLORS



Purple (PR)



Silver (SL)



Navy (NB)



Ivory (IV)



Black (BK)



Teal (TL)



Bronze (BZ)



Rose Fog (RF)



Raspberry (RS)

Model #	Insert	Size (WxDxH) in inches	Packed by	Unit Price	
				12 - 144	144+
1	GM10 Cut foam ring slot	2 $\frac{3}{8}$ x 2 $\frac{1}{8}$ x 1 $\frac{1}{8}$	12	\$ 1.29	\$ 1.19
2	GM12 Cut foam earring / dbl ring / cufflink	3 $\frac{1}{4}$ x 2 $\frac{3}{8}$ x 1 $\frac{1}{8}$	12	\$ 1.39	\$ 1.29
3	GM23 Cut foam earring	2 $\frac{5}{8}$ x 2 $\frac{5}{8}$ x 1	12	\$ 1.39	\$ 1.29
4	GM33 Cut foam pendant / ring	3 $\frac{3}{8}$ x 3 $\frac{3}{8}$ x 1 $\frac{1}{8}$	12	\$ 1.60	\$ 1.45
5	GM40 Cut foam bracelet	9 $\frac{3}{8}$ x 2 $\frac{1}{4}$ x 1	12	\$ 2.30	\$ 2.09
6	GM68 Pillow	3 $\frac{3}{4}$ x 3 $\frac{3}{4}$ x 2 $\frac{3}{8}$	12	\$ 2.45	\$ 2.25
7	GM80 Cut foam necklace	6 $\frac{5}{8}$ x 6 $\frac{5}{8}$ x 1 $\frac{1}{8}$	12	\$ 3.40	\$ 3.19

Box Specifications

Exterior finish	Metallic brushed paper	Interior material/color	Velvet topped foam
Outer packaging	White sleeve	Box shell	Paperboard
Printing options	Hot stamp on top of box		



GLAMOUR
Collection





1 Ring



2 Earring (small)



3 Earring (medium)



4 Earring (long)



5 Pendant



6 Bracelet



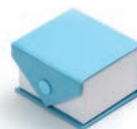
7 Universal



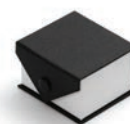
8 Necklace

PRIM With sleek, modern lines and fashionable colors, the Prim collection radiates youth and freshness. The ribbed texture of this paper box adds depth and sophistication, and the matching snaps show attention to detail to complement your store's image. Available in eight stylish shapes with white suede interiors and optional logo stamping inside or outside.

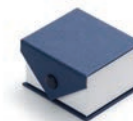
AVAILABLE
COLORS



Light Blue
(LB)



Black
(BK)



Navy
(NB)



Burgundy
(BY)

Model #	Insert	Insert style*	Size (WxDxH) in inches	Packed by	Unit Price	
					12 - 144	144+
1	PM10 Ring slot	a	2¼ x 2½ x 1¾	12	\$ 1.49	\$ 1.25
2	PM20 Pad-style earring	b	2¼ x 2½ x 1¾	12	\$ 1.49	\$ 1.25
3	PM25 T-style earring	d	2½ x 2½ x 1	12	\$ 1.69	\$ 1.49
4	PM28 T-style earring	f	2¾ x 3½ x 1¼	12	\$ 1.89	\$ 1.59
5	PM30 Pad-style pendant	b	2½ x 2½ x 1	12	\$ 1.69	\$ 1.49
6	PM40 Tab-style bracelet	e	9¾ x 2¼ x 1	12	\$ 2.69	\$ 2.45
7	PM50 Flat pad	q	3¾ x 3¾ x 1	12	\$ 1.89	\$ 1.65
8	PM80 Tab-style necklace	l	6¾ x 6¾ x 1	12	\$ 3.85	\$ 3.55

Box Specifications

Exterior finish	Matte ribbed paper	Interior material/color	White suede
Outer packaging	White sleeve	Box shell	Paperboard
Printing options	Hot stamp inside box/on top of box		

* see page 82



PRIM
Collection





1 Ring



2 Earring



3 Pendant



4 Bracelet



5 Earring/pendant



6 Bangle



7 Necklace

LEGACY

A twist on the old classic, the new Legacy collection reimagines the two-piece color-on-gold jewelry box with a new matching color bottom and just the right balance of metallic gold. Print your logo inside the traditional border of this hard cardboard box with smooth velvet interior, and give your fine pieces the stellar treatment they deserve. Seven shapes and four colors provide you with many different options.

AVAILABLE
COLORS



Green
(GN)



Burgundy
(BY)



Navy Blue
(NB)



Black
(BK)

Model #	Insert	Insert style*	Size (WxDxH) in inches	Packed by	Unit Price	
					12 - 144	144+
1	LE10 Ring Slot	a	2 x 2 x 1½	12	\$ 1.35	\$ 1.19
2	LE20 Pad-style earring	c	2 x 2 x 1½	12	\$ 1.35	\$ 1.19
3	LE30 Pad-style pendant	i	2¾ x 3¼ x 1¼	12	\$ 1.70	\$ 1.59
4	LE40 Tab-style Bracelet	e	8¾ x 2 x 1¾	12	\$ 2.65	\$ 2.45
5	LE50 Reversible earring/pendant	b	3½ x 3½ x 1¼	12	\$ 2.10	\$ 1.95
6	LE65 Standing bangle slot	h	3¼ x 1¼ x 3¾	12	\$ 2.25	\$ 2.05
7	LE90 Tab-style Necklace	l	7½ x 7½ x 1¾	12	\$ 4.05	\$ 3.75

Box Specifications

Exterior finish	Matte texture paper	Interior material/color	Matching velvet
Outer packaging	White sleeve	Box shell	Cardboard
Printing options	Top of box		

* see page 82



LEGACY *Collection*





1 Ring/earring stud



2 Earring T-bar/pendant



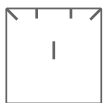
3 Charm/Pendant/Ring



4 Bracelet



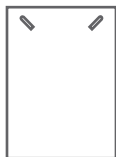
5 Large pendant/utility



6 Bangle/Watch



7 Necklace



FLOURISH Vividly colored jewelry boxes can turn gifting into a sensational experience. These striped boxes are perfect for adding bright color tones to your store all year round and especially during holiday or sale season. Each box is topped with a large bow for a dramatic presentation.

AVAILABLE
COLORS



Red/Black
(RD/BK)



Green
(GN)



Blue
(BL)

Model #	Insert	Size (WxDxH) in inches	Packed by	Unit Price		
				1pk - 4pks	4pks+	
1	FL10	Ring/earring stud	1 7/8 x 1 7/8 x 1 3/8	40	\$ 0.90	\$ 0.85
2	FL26	Earring T-bar/pendant	2 5/8 x 2 5/8 x 1 1/4	40	\$ 1.15	\$ 1.05
3	FL33	Charm/pendant/ring	2 1/8 x 3 1/8 x 1 1/8	40	\$ 1.15	\$ 1.05
4	FL40	Bracelet	9 x 1 3/4 x 1 1/8	24	\$ 1.39	\$ 1.29
5	FL50	Large pendant/utility	3 3/8 x 3 3/8 x 1 1/4	24	\$ 1.50	\$ 1.39
6	FL65	Bangle/watch	3 1/2 x 3 1/2 x 1 1/8	24	\$ 1.50	\$ 1.39
7	FL80	Necklace	7 1/4 x 5 1/4 x 1 1/8	12	\$ 3.00	\$ 2.85

Box Specifications

Exterior finish	Matte paper	Outer packaging	N/A
Interior material/color	Velvet - RD/BK is black; GN & BL is white		
Printing options	Top of box	Box shell	Cardboard



FLOURISH *Collection*





1 Ring rectangle



2 Ring square
(white color only)



3 Earring



4 Earring/pendant

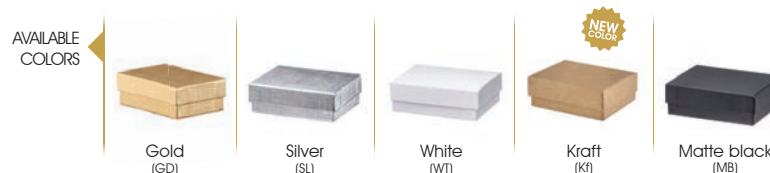


5 Large rectangle



6 Large square

UNIFORM Providing the solution for a simple presentation that still creates a statement. Perfectly edged, these cotton filled boxes are economically priced and manufactured with uncompromised quality. This collection is credited for its multifunctional use and prime color choices. The defining textures of linen on gold and silver, geometric swirls on white, and a weave on black heighten the level of style.



Model #	Insert	Size (WxDxH) in inches	Packed by	Unit Price	
				100 - 500	500+
1 UN21	Cotton filled	2 1/8 x 1 1/8 x 3/4	100	\$ 0.32	\$ 0.28
2 UN22*	Cotton filled	2 x 2 x 1	100	\$ 0.32	\$ 0.28
3 UN23	Cotton filled	2 3/8 x 3 1/8 x 1	100	\$ 0.42	\$ 0.38
4 UN33	Cotton filled	3 1/2 x 3 1/2 x 1	100	\$ 0.53	\$ 0.47
5 UN82	Cotton filled	8 x 2 x 1	100	\$ 0.69	\$ 0.64
6 UN64	Cotton filled	6 x 5 x 1	100	\$ 0.99	\$ 0.89

*white color only

Box Specifications

Exterior finish	Textured paper	Interior material/color	White cotton
Outer packaging	N/A	Box shell	Paper
Printing options	Hot stamp top of box		



UNIFORM *Collection*



POUCHES

POUCHES



SUEDE POUCHES

AVAILABLE COLORS



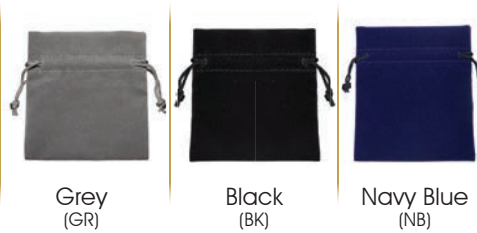
Rectangular pouches - single sided suede.

Model #	Description	Size (WxH) in inches	Packed by	Unit Price	
				24 - 300	300+
1	PQ23 Suede rectangular pouch	2½ x 3	24	\$ 0.59	\$ 0.55
2	PQ33 Suede rectangular pouch	3 x 3½	24	\$ 0.66	\$ 0.62
3	PQ34 Suede rectangular pouch	3¾ x 4	24	\$ 0.75	\$ 0.70
4	PQ45 Suede rectangular pouch	4½ x 5½	24	\$ 0.85	\$ 0.79

Printing options Hot stamp side one

VELVETEEN POUCHES

AVAILABLE COLORS



Rectangular pouches - single sided velveteen.

Model #	Description	Size (WxH) in inches	Packed by	Unit Price	
				24 - 300	300+
1	PL23 Velveteen rectangular pouch	2½ x 3	24	\$ 0.35	\$ 0.32
2	PL33 Velveteen rectangular pouch	3 x 3½	24	\$ 0.39	\$ 0.35
3	PL34 Velveteen rectangular pouch	3¾ x 4	24	\$ 0.44	\$ 0.40
4	PL45 Velveteen rectangular pouch	4½ x 5½	24	\$ 0.55	\$ 0.49

Printing options Hot stamp side one



SUEDE POUCHES

AVAILABLE COLORS



Light Grey (LG)



Black (BK)



Navy Blue (NB)



Green (GN)



Burgundy (BY)



Brown (BN)



Round pouches - double sided suede.

Model #	Description	Size (WxH) in inches	Packed by	Unit Price	
				24 - 300	300+
1	PO23 Suede round pouch	2½ x 3	24	\$ 0.65	\$ 0.59
2	PO33 Suede round pouch	3 x 3½	24	\$ 0.75	\$ 0.67
3	PO34 Suede round pouch	3¾ x 4	24	\$ 0.95	\$ 0.85
4	PO45 Suede round pouch	4½ x 5½	24	\$ 1.15	\$ 1.05
5	PO55 Suede round pouch	5¼ x 5¼	24	\$ 1.29	\$ 1.19

Printing options Hot stamp side one

MICROFIBER POUCHES

with packer and optional divider

AVAILABLE COLORS



Black (BK)



Grey (GR)



Ivory (IV)



Blue (BL)



1*



2*

* Available with optional divider.

Model #	Description	Size (WxH) in inches	Packed by	Unit Price	
				12 - 144	144+
1	PS34 Microfiber pouch w/ packer	3½ x 4	12	\$ 1.19	\$ 1.09
1a	PS34-D Microfiber pouch w/ divider and packer	3½ x 4	12	\$ 1.35	\$ 1.24
2	PS45 Microfiber pouch w/ packer	4½ x 5	12	\$ 1.60	\$ 1.49
2a	PS45-D Microfiber pouch w/ divider and packer	4½ x 5	12	\$ 1.75	\$ 1.59

Printing options Hot stamp outside packer / side one



PEARL FOLDERS

SUEDE



AVAILABLE COLORS

Model #	Description	Size (WxH) in inches	Packed by	Unit Price
1	FS11 Suede folder	5½ x 6¾	12	\$ 5.69
2	FS12 Suede folder	6 x 8¾	12	\$ 6.79

LEATHERETTE



AVAILABLE COLORS



Model #	Description	Size (WxH) in inches	Packed by	Unit Price
1	FL11 Leatherette folder	5½ x 6¾	12	\$ 5.69
2	FL12 Leatherette folder	6 x 8¾	12	\$ 6.79

NEW COLLECTION

SOFT TOUCH



AVAILABLE COLORS



Model #	Description	Size (WxH) in inches	Packed by	Unit Price
1	VGFL Leatherette folder	6 x 8¾	12	\$ 7.95 \$ 7.50

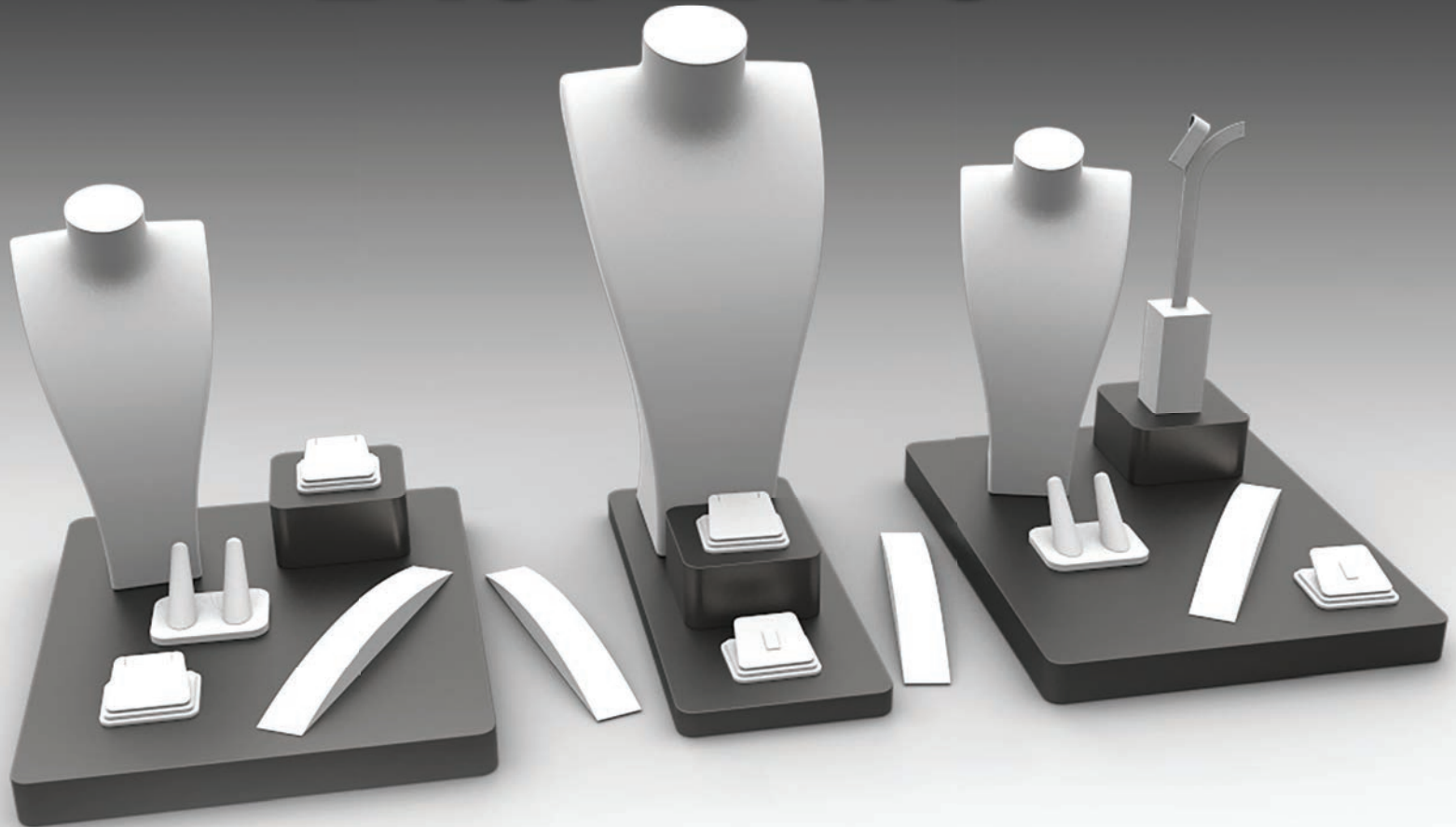
Printing options for all folders Hot stamp inside folder / outside packer
Outer packaging 2 piece cardboard box.

800.859.1788 • www.allurepack.com



PEARL FOLDERS

DISPLAYS



DISPLAYS



RING DISPLAYS

Leatherette Finish

STANDARD
COLORS



White



Cream



Black

ELITE
COLORS*



Steel grey



Brown

Model #	Description	Size (WxDxH) in inches	Unit Price		
			standard	elite	
1	D111	Single ring finger	1 5/8 x 2 5/8 x 2	\$ 5.89	\$ 5.99
2	D112	Double ring finger	3 3/8 x 2 5/8 x 2	\$ 8.59	\$ 8.89
3	D113	3 ring finger	4 5/8 x 2 5/8 x 2	\$ 11.39	\$ 12.50
4	D114	4 ring finger	6 3/8 x 2 5/8 x 2	\$ 14.95	\$ 15.49
5	D160	Magnetic multi-ring stand	2 1/8 x 2 7/8 x 3 1/4	\$ 16.29	\$ 17.05
6	D110	Ring clip	2 1/2 x 2 1/4 x 1	\$ 5.75	\$ 5.99
7	D140	Ring fan	2 1/2 x 2 1/2 x 3/8	\$ 1.49	\$ 1.75
8	D141	Ring cone	1 1/2 x 1 x 2 1/8	\$ 1.29	\$ 1.39
9	D142	Ring pad	1 1/4 x 1 1/2	\$ 1.19	\$ 1.29
10	D143	Ring stand	1 5/8 x 1 1/8 x 7/8	\$ 6.79	\$ 7.49
11	D121	Single ring stand	2 1/4 x 2 1/8 x 1 1/2	\$ 7.85	\$ 8.49
12	D122	Double ring stand	2 1/4 x 2 1/8 x 1 1/2	\$ 9.69	\$ 10.29
13	D123	3 ring stand	3 1/8 x 4 1/4 x 1 1/8	\$ 11.79	\$ 12.69
14	D124	4 ring stand	3 1/8 x 4 1/4 x 1 1/8	\$ 13.69	\$ 14.69
15	D125	5 ring stand	3 1/8 x 4 1/4 x 1 1/8	\$ 15.89	\$ 16.95
16	D132	Double ring stand	3 3/4 x 2 x 1 1/2	\$ 12.25	\$ 13.29
17	D133	3 ring stand	2 1/2 x 3 1/2 x 1 5/8	\$ 11.79	\$ 12.69
18	D151	5 ring tray	3 3/8 x 3 3/8 x 1 1/8	\$ 16.45	\$ 17.95
19	D138	12 ring tray	4 7/8 x 5 7/8 x 2	\$ 24.75	\$ 26.79
20	D137	7 ring tray	5 x 3 x 1 1/8	\$ 16.59	\$ 17.45
21	D135	Ring tray (7 rows)	4 3/4 x 4 1/4 x 1 5/8	\$ 22.99	\$ 24.25
22	D153	5 ring tray	6 1/2 x 4 5/8 x 1 5/8	\$ 27.89	\$ 30.25
23	D152	5 ring tray	9 1/8 x 2 3/4 x 1 5/8	\$ 20.79	\$ 22.89
24	D154	5 ring tray	7 1/8 x 2 1/8 x 1 1/2	\$ 16.79	\$ 17.89
25	D139	20 ring tray	8 x 5 5/8 x 1 5/8	\$ 31.95	\$ 34.49
26	D170	Set of 4 ring slot stands	1 5/8 x 1 1/8 x 2 1/8 - 5/8	\$ 28.59	\$ 30.75
27	D171	Set of 5 ring slot stands	2 x 2 x 1 1/8 - 3/2	\$ 29.99	\$ 33.65
28	D172	Set of 5 ring clips stands	2 x 2 x 1 1/8 - 3/8	\$ 30.39	\$ 32.95

* Shown colors available for immediate shipment. More colors available possible longer processing period. Minimum order may be required. Please call for details.



1



5



2



6



3



7



4



8



9



10



11



15



20



26



12



16



21



22



13



17



23



27



14



18



24



28



19



25

DISPLAYS



EARRING DISPLAYS

Leatherette Finish

STANDARD
COLORS



White



Cream



Black

ELITE
COLORS*



Steel grey

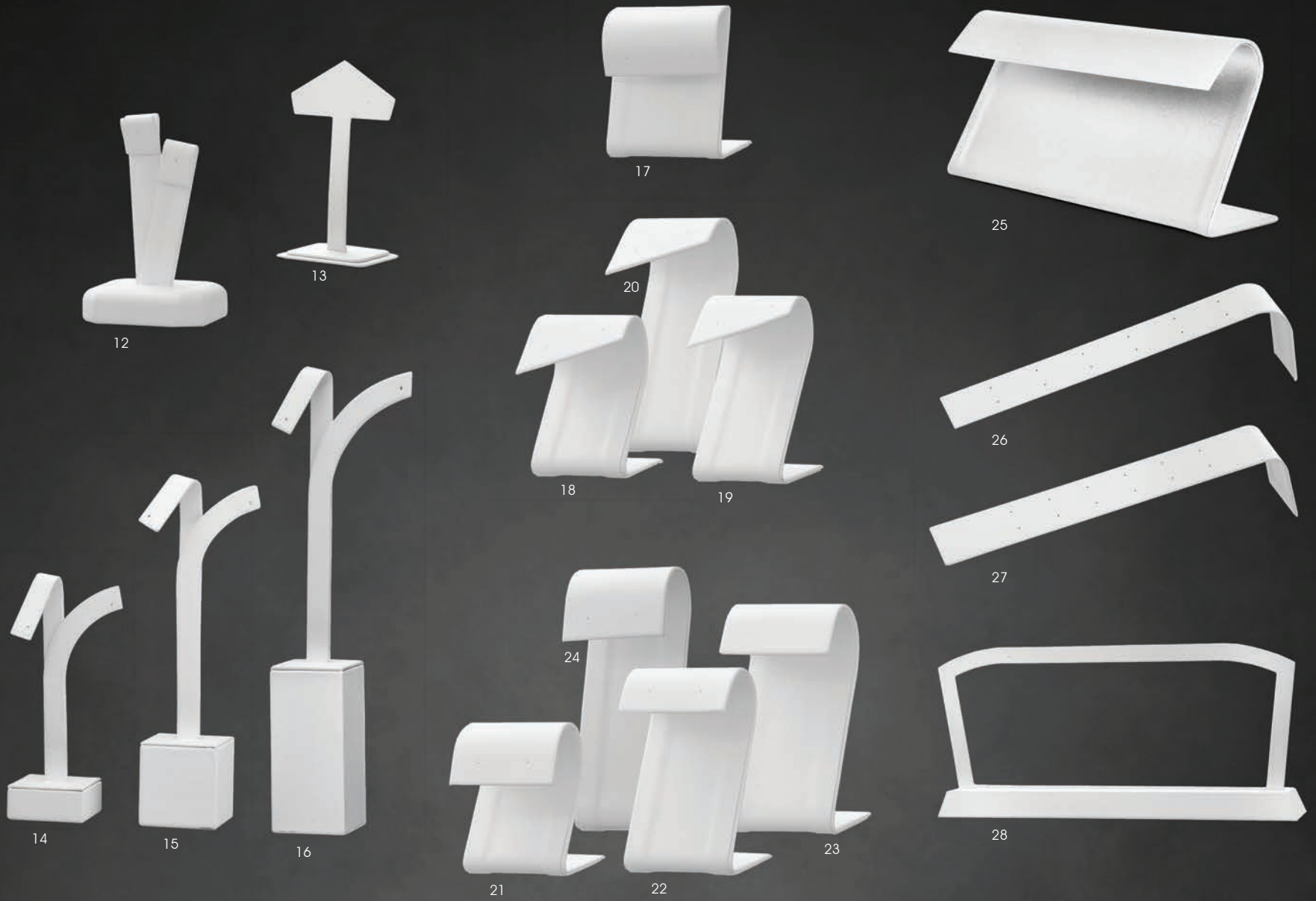


Brown

Model #	Description	Size (WxDxH) in inches	Unit Price		
			standard	elite	
1	D210	Foldover earring tree	1 $\frac{7}{8}$ x 1 $\frac{7}{8}$ x 2 $\frac{5}{8}$	\$ 8.59	\$ 9.39
2	D211	Foldover earring tree	1 $\frac{7}{8}$ x 1 $\frac{7}{8}$ x 3 $\frac{3}{4}$	\$ 8.79	\$ 9.59
3	D212	Foldover earring tree	1 $\frac{7}{8}$ x 1 $\frac{7}{8}$ x 4 $\frac{5}{8}$	\$ 10.35	\$ 11.25
4	D213	Foldover earring tree	1 $\frac{7}{8}$ x 1 $\frac{7}{8}$ x 5 $\frac{5}{8}$	\$ 11.19	\$ 12.25
5	D214	T-stand earring	3 $\frac{1}{8}$ x 1 $\frac{7}{8}$ x 2 $\frac{5}{8}$	\$ 7.19	\$ 7.89
6	D215	T-stand earring	3 $\frac{1}{8}$ x 1 $\frac{7}{8}$ x 3 $\frac{3}{8}$	\$ 8.59	\$ 9.45
7	D216	T-stand earring	3 $\frac{1}{8}$ x 1 $\frac{7}{8}$ x 3 $\frac{1}{2}$	\$ 9.29	\$ 10.29
8	D217	T-stand earring	3 $\frac{1}{8}$ x 1 $\frac{7}{8}$ x 5 $\frac{3}{8}$	\$ 9.79	\$ 10.89
9	D218	Curve earring tree	3 $\frac{1}{2}$ x 1 $\frac{7}{8}$ x 5	\$ 6.59	\$ 6.99
10	D219	Straight earring tree	1 $\frac{7}{8}$ x 1 $\frac{7}{8}$ x 3 $\frac{3}{8}$	\$ 6.65	\$ 7.25
11	D220	Curve earring tree	1 $\frac{7}{8}$ x 1 $\frac{7}{8}$ x 3 $\frac{3}{8}$	\$ 7.95	\$ 8.75
12	D221	Foldover earring tree	2 $\frac{1}{8}$ x 1 $\frac{7}{8}$ x 3 $\frac{1}{2}$	\$ 6.45	\$ 6.95
13	D222	Angle earring tree	2 $\frac{5}{8}$ x 1 $\frac{3}{4}$ x 4 $\frac{1}{8}$	\$ 4.49	\$ 5.19
14	D231	Tall earring tree (short)	1 $\frac{1}{2}$ x 1 $\frac{1}{2}$ x 5	\$ 14.75	\$ 15.75
15	D232	Tall earring tree (medium)	1 $\frac{1}{2}$ x 1 $\frac{1}{2}$ x 7	\$ 16.75	\$ 17.79
16	D233	Tall earring tree (tall)	1 $\frac{1}{2}$ x 1 $\frac{1}{2}$ x 9 $\frac{1}{4}$	\$ 18.59	\$ 19.79
17	D250	Foldover earring stand	2 x 1 $\frac{7}{8}$ x 2 $\frac{1}{2}$	\$ 8.69	\$ 9.59
18	D251	Foldover earring stand	1 $\frac{1}{2}$ x 1 $\frac{7}{8}$ x 2 $\frac{5}{8}$	\$ 8.95	\$ 9.85
19	D252	Foldover earring stand	1 $\frac{1}{2}$ x 1 $\frac{7}{8}$ x 2 $\frac{7}{8}$	\$ 9.29	\$ 9.99
20	D253	Foldover earring stand	1 $\frac{1}{2}$ x 1 $\frac{7}{8}$ x 3 $\frac{3}{8}$	\$ 9.79	\$ 10.69
21	D254	Foldover earring stand	1 $\frac{5}{8}$ x 1 $\frac{7}{8}$ x 2 $\frac{1}{4}$	\$ 7.59	\$ 8.25
22	D255	Foldover earring stand	1 $\frac{5}{8}$ x 1 $\frac{7}{8}$ x 2 $\frac{7}{8}$	\$ 7.89	\$ 8.49
23	D256	Foldover earring stand	1 $\frac{5}{8}$ x 1 $\frac{7}{8}$ x 3 $\frac{1}{4}$	\$ 8.59	\$ 9.49
24	D257	Foldover earring stand	1 $\frac{5}{8}$ x 1 $\frac{7}{8}$ x 3 $\frac{3}{8}$	\$ 9.89	\$ 10.59
25	D259	Foldover earring stand	6 $\frac{1}{2}$ x 1 $\frac{7}{8}$ x 3	\$ 13.39	\$ 13.99
26	D280	6 set stud ramp	1 $\frac{1}{4}$ x 6 x 1 $\frac{5}{8}$	\$ 7.49	\$ 8.39
27	D291	6 set stud ramp	2 x 8 $\frac{3}{8}$ x 1 $\frac{1}{8}$	\$ 9.29	\$ 9.89
28	D292	5 set earring hanger bar	11 x 1 $\frac{1}{4}$ x 5	\$ 18.95	\$ 21.49

* Shown colors available for immediate shipment. More colors available possible longer processing period. Minimum order may be required. Please call for details.





DISPLAYS



NECK DISPLAYS

Leatherette Finish

STANDARD
COLORS



White



Cream



Black

ELITE
COLORS*



Steel grey



Brown

Model #	Description	Size (WxDxH) in inches	Unit Price		
			standard	elite	
1	D821	Small neck	2¼ x 2⅝ x 2¾	\$ 11.79	\$ 12.95
2	D816	Small neck	4¼ x 3¼ x 3	\$ 15.25	\$ 16.99
3	D817	Medium neck	5⅞ x 3⅞ x 4¼	\$ 19.25	\$ 20.85
4	D818	Medium neck	6¼ x 4½ x 4⅞	\$ 23.79	\$ 25.49
5	D819	Large neck	7¾ x 6 x 5⅝	\$ 26.79	\$ 29.39
6	D820	Large neck	8½ x 7 x 6½	\$ 29.95	\$ 31.95
7	D823	Large neck	7½ x 5 x 8⅜	\$ 30.95	\$ 33.99
8	D810	Small neck	4⅞ x 4½ x 4¼	\$ 18.75	\$ 20.95
9	D811	Medium neck	5⅝ x 4⅞ x 4¾	\$ 27.95	\$ 29.95
10	D812	Medium neck	5⅞ x 5 x 5	\$ 22.95	\$ 24.39
11	D822	Large neck	7 x 6¾ x 6⅝	\$ 29.95	\$ 32.25
12	D813	Large neck	7¼ x 4¾ x 8	\$ 34.95	\$ 38.49
13	D815	Laydown neck	5⅞ x 4⅞ x 3⅞	\$ 25.95	\$ 28.49
14	D814	Laydown neck	6¼ x 7⅞ x 3¾	\$ 24.49	\$ 26.75
15	D853	Small neck	4⅞ x 3⅞ x 8¼	\$ 34.25	\$ 36.79
16	D852	Medium neck	5¼ x 5⅝ x 11⅞	\$ 38.95	\$ 42.49
17	D854	Large neck	7½ x 6 x 16⅞	\$ 56.95	\$ 61.95
18	D855	X-Large neck	12 x 6 x 20	\$ 79.95	\$ 89.95
19	D830	Necklace stand	4 x 2⅞ x 5¼	\$ 15.79	\$ 16.79
20	D831	Necklace easel	6 x 3½ x 8	\$ 16.75	\$ 18.45
21	D832	Necklace easel	7½ x 4 x 10	\$ 16.25	\$ 18.15



* Shown colors available for immediate shipment. More colors available possible longer processing period. Minimum order may be required. Please call for details.





PENDANT & CHAIN DISPLAYS

Leatherette Finish

STANDARD
COLORS



White



Cream



Black

ELITE
COLORS*



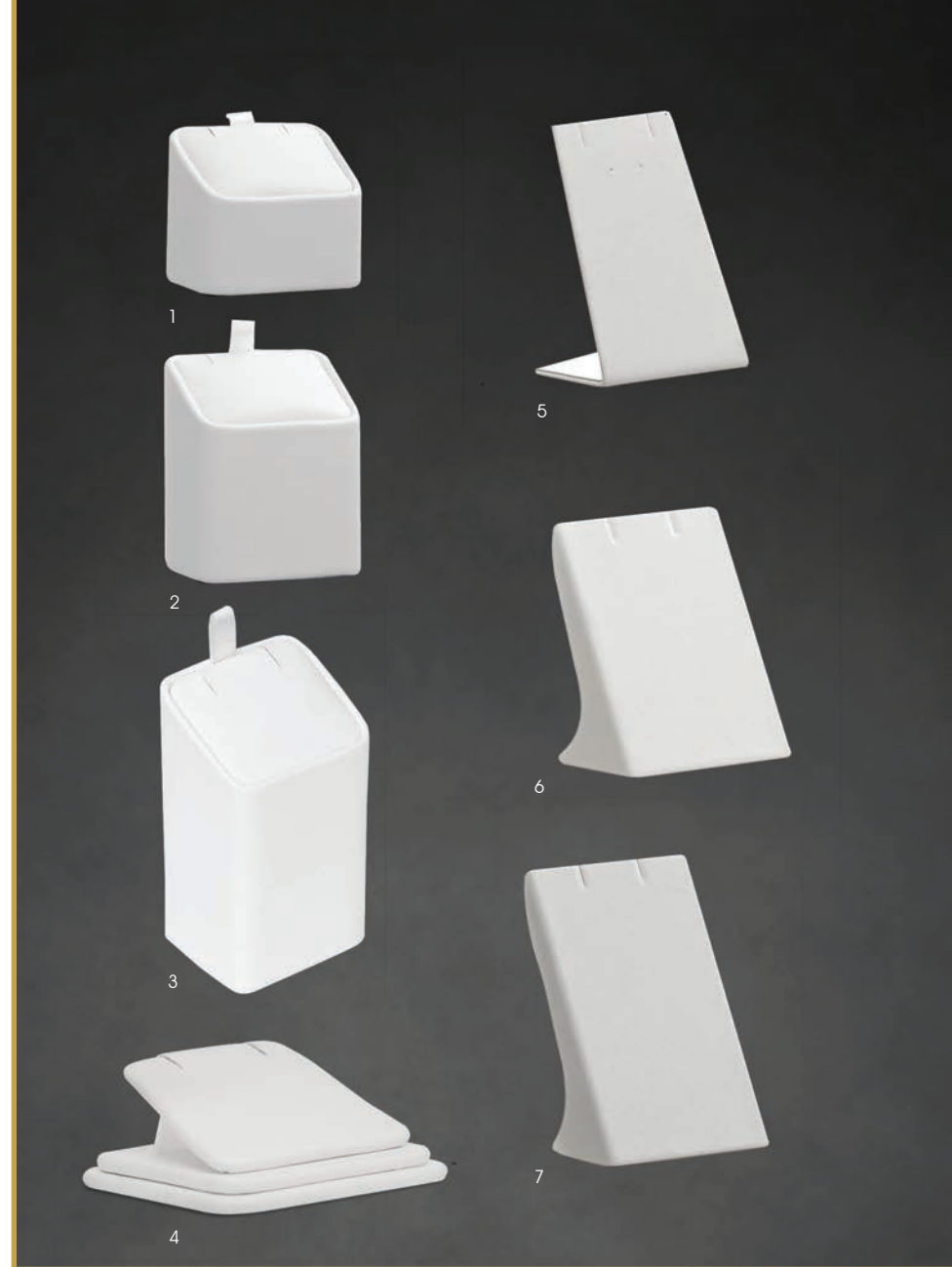
Steel grey

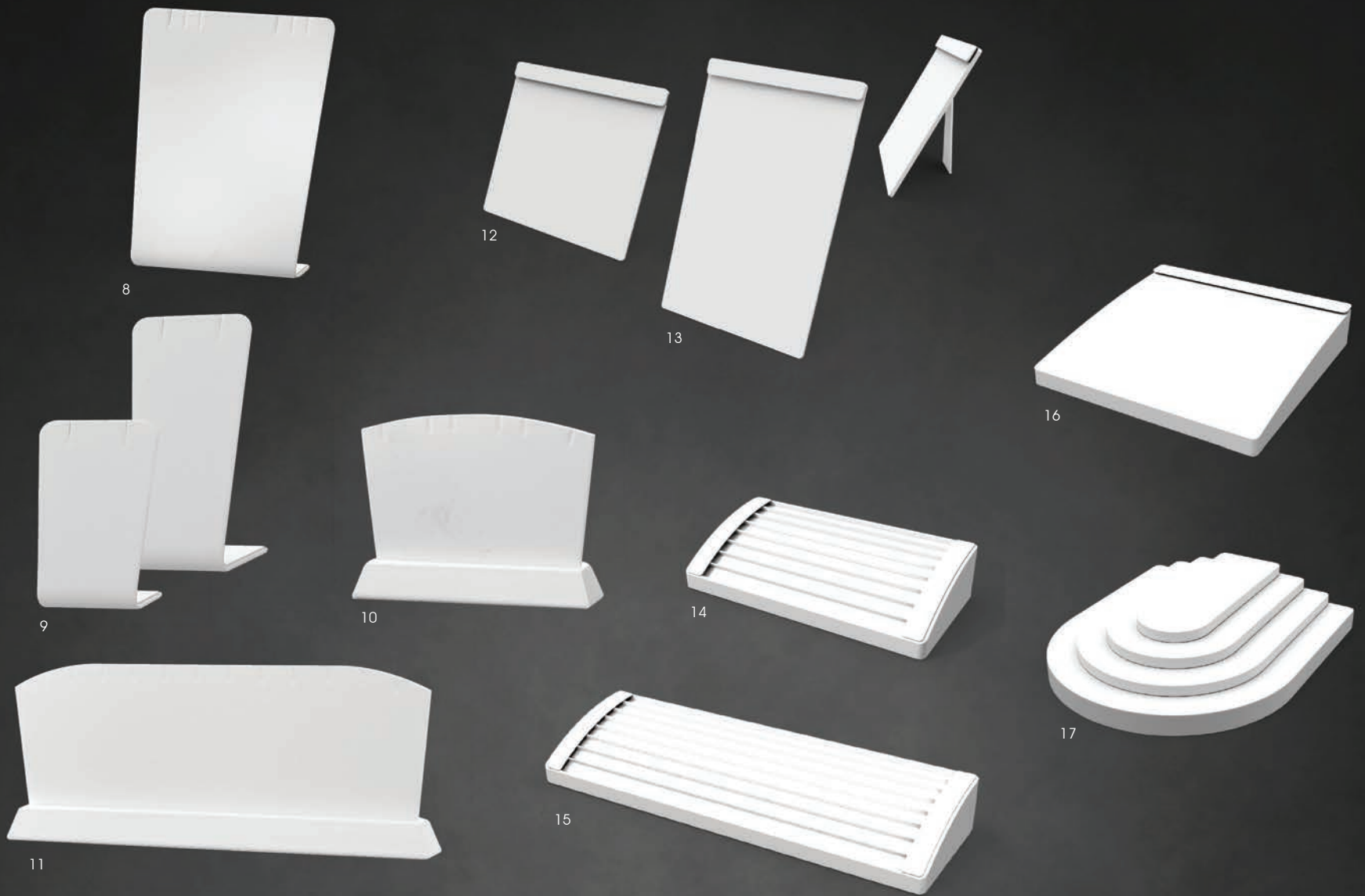


Brown

Model #	Description	Size (WxDxH) in inches	Unit Price	
			standard	elite
1	D310 Short pendant stand	1 $\frac{7}{8}$ x 1 $\frac{1}{2}$ x 1 $\frac{1}{8}$	\$ 6.79	\$ 7.59
2	D311 Medium pendant stand	1 $\frac{7}{8}$ x 1 $\frac{1}{2}$ x 2 $\frac{1}{4}$	\$ 7.29	\$ 7.99
3	D316 Tall pendant stand	1 $\frac{7}{8}$ x 1 $\frac{1}{2}$ x 3	\$ 7.89	\$ 8.75
4	D312 Pendant stand	2 $\frac{1}{2}$ x 2 $\frac{1}{4}$ x 1 $\frac{1}{8}$	\$ 6.09	\$ 6.69
5	D313 Pendant easel	2 $\frac{3}{8}$ x 1 $\frac{1}{8}$ x 3 $\frac{1}{2}$	\$ 4.39	\$ 4.89
6	D314 Pendant easel	2 x 1 $\frac{1}{8}$ x 2 $\frac{1}{2}$	\$ 8.59	\$ 9.35
7	D315 Pendant easel	2 x 1 $\frac{1}{8}$ x 3	\$ 10.69	\$ 11.85
8	D380 Pendant easel	4 x 1 $\frac{1}{8}$ x 5	\$ 8.89	\$ 9.69
9	D381 Pendant easel (set of 2)	1 $\frac{1}{8}$ x 1 $\frac{1}{8}$ x 2 $\frac{3}{8}$ - 3 $\frac{1}{8}$	\$ 18.25	\$ 19.99
10	D382 Pendant easel	5 $\frac{1}{2}$ x 1 $\frac{1}{4}$ x 4 $\frac{1}{8}$	\$ 17.49	\$ 19.25
11	D383 Pendant easel	10 $\frac{3}{8}$ x 1 $\frac{1}{4}$ x 4 $\frac{1}{8}$	\$ 21.75	\$ 23.95
12	D510 16 chain board w/ easel	10 x 4 $\frac{1}{2}$ x 10	\$ 21.25	\$ 22.25
13	D511 16 chain board w/ easel	10 x 6 x 16	\$ 24.79	\$ 25.95
14	D520 Short 8 chain ramp	10 x 5 x 2	\$ 29.69	\$ 32.49
15	D525 Long 8 chain ramp	16 x 5 x 2	\$ 35.75	\$ 37.50
16	D530 Laydown chain ramp	10 x 10 x 2	\$ 27.50	\$ 29.75
17	D540 Pearl cake	8 $\frac{1}{2}$ x 10 x 2	\$ 39.75	\$ 42.50

* Shown colors available for immediate shipment. More colors available possible longer processing period. Minimum order may be required. Please call for details.





DISPLAYS



BRACELET & BANGLE DISPLAYS

Leatherette Finish

STANDARD
COLORS



White



Cream



Black

ELITE
COLORS*



Steel grey



Brown

Model #	Description	Size (WxDxH) in inches	Unit Price standard	Unit Price elite
1	D431 Bracelet ramp	1 $\frac{1}{8}$ x 9 $\frac{1}{2}$ x 1 $\frac{1}{8}$	\$ 7.69	\$ 8.25
2	D432 Bracelet ramp	1 $\frac{1}{8}$ x 8 $\frac{1}{2}$ x 1 $\frac{1}{8}$	\$ 7.59	\$ 8.09
3	D433 Bracelet ramp	1 $\frac{1}{8}$ x 9 $\frac{1}{4}$ x $\frac{5}{8}$	\$ 11.69	\$ 12.95
4	D434 Bracelet ramp	5 $\frac{7}{8}$ x 8 x 1 $\frac{3}{4}$	\$ 13.19	\$ 14.49
5	D393 Bracelet ramp	6 x 8 $\frac{7}{8}$ x 1 $\frac{3}{8}$	\$ 25.25	\$ 28.15
6	D390 Bracelet ramp	1 $\frac{3}{4}$ x 8 $\frac{3}{4}$ x 2 $\frac{3}{8}$	\$ 13.95	\$ 15.25
7	D391 Bracelet ramp	1 $\frac{3}{4}$ x 8 $\frac{3}{4}$ x 3 $\frac{3}{8}$	\$ 14.99	\$ 16.59
8	D392 Bracelet ramp	1 $\frac{3}{4}$ x 8 $\frac{3}{4}$ x 4 $\frac{1}{4}$	\$ 16.89	\$ 18.89
9	D610 Bangle/watch stand (vertical)	2 x 2 $\frac{1}{2}$ x 4	\$ 8.80	\$ 9.90
10	D611 Bangle/watch stand (vertical)	2 x 2 $\frac{1}{2}$ x 3 $\frac{3}{8}$	\$ 6.99	\$ 7.89
11	D612 Bangle/watch stand (horizontal)	2 $\frac{1}{8}$ x 2 $\frac{1}{8}$ x 1 $\frac{3}{8}$	\$ 6.79	\$ 7.59
12	D613 Bangle/watch stand (horizontal)	3 $\frac{1}{4}$ x 2 $\frac{1}{2}$ x 1 $\frac{3}{4}$	\$ 6.79	\$ 7.59
13	D614 Bangle/watch stand (vertical)	1 $\frac{3}{4}$ x 1 $\frac{7}{8}$ x 3 $\frac{3}{8}$	\$ 6.99	\$ 7.79
14	D615 Bangle/watch stand (horizontal)	2 $\frac{7}{8}$ x 1 $\frac{7}{8}$ x 1 $\frac{1}{2}$	\$ 6.99	\$ 7.79
15	D620 Pillow	3 $\frac{1}{2}$ x 2 x 3 $\frac{1}{2}$	\$ 4.89	\$ 5.29
16	D621 Pillow with stand	3 x 2 x 3	\$ 6.99	\$ 7.49
17	D631 Narrow (ladies') watch stand	1 $\frac{1}{4}$ x 2 $\frac{1}{2}$ x 2 $\frac{7}{8}$	\$ 17.49	\$ 18.49
18	D632 Wide (men's) watch stand	2 x 2 $\frac{1}{2}$ x 2 $\frac{7}{8}$	\$ 19.49	\$ 19.99
19	D671 Bracelet bar	8 $\frac{1}{4}$ x 2 $\frac{3}{8}$ x 5 $\frac{3}{8}$	\$ 18.49	\$ 19.89
20	D672 Bracelet bar	10 $\frac{1}{8}$ x 4 x 8 $\frac{3}{4}$	\$ 27.95	\$ 29.95
21	D675 5 bangle tray	3 $\frac{3}{8}$ x 7 x 2 $\frac{1}{2}$	\$ 15.95	\$ 17.49
22	D679 9 bangle tray	4 $\frac{3}{4}$ x 9 $\frac{7}{8}$ x 1 $\frac{3}{4}$	\$ 20.95	\$ 22.95
23	D683 Set of 3 bangle/watch stands	2 x 2 x 4 $\frac{1}{4}$ - 7	\$ 18.49	\$ 20.49

* Shown colors available for immediate shipment. More colors available possible longer processing period. Minimum order may be required. Please call for details.





DISPLAYS



LIGHTWEIGHT & COUNTER TRAYS*

Leatherette Finish

STANDARD
COLORS



White



Cream



Black

ELITE
COLORS**



Steel grey



Brown

LIGHTWEIGHT & STACKABLE!

Model #	Description	Size (WxDxH) in inches	Unit Price	
			standard	elite
1	DX11 10 ring octagon tray	6 $\frac{7}{8}$ x 3 $\frac{1}{2}$ x 1	\$ 19.95	\$ 22.55
2	DX15 14 ring octagon tray	6 $\frac{7}{8}$ x 3 $\frac{1}{2}$ x 1	\$ 19.95	\$ 22.55
3	DX14 14 ring octagon tray	8 $\frac{1}{8}$ x 4 $\frac{5}{8}$ x 1	\$ 22.89	\$ 25.50
4	DX47 7 bracelet octagon tray	8 $\frac{1}{4}$ x 7 x 1	\$ 23.65	\$ 26.40
5	DX49 9 bracelet octagon tray	8 $\frac{1}{4}$ x 7 x 1	\$ 23.65	\$ 26.40
6	DX29 9 earring octagon tray	8 $\frac{1}{4}$ x 7 x 1	\$ 23.65	\$ 26.40
7	DX22 12 earring octagon tray	8 $\frac{1}{4}$ x 7 x 1	\$ 23.65	\$ 26.40
8	DX26 16 earring octagon tray	8 $\frac{1}{4}$ x 7 x 1	\$ 26.95	\$ 26.95
9	DQ10 10 ring rectangle tray	8 $\frac{1}{4}$ x 3 $\frac{1}{2}$ x 1	\$ 20.65	\$ 23.00
10	DQ14 14 ring rectangle tray	8 $\frac{1}{4}$ x 3 $\frac{1}{2}$ x 1	\$ 20.65	\$ 23.00
11	DQ15 14 ring rectangle tray	8 $\frac{1}{4}$ x 4 $\frac{3}{4}$ x 1	\$ 25.00	\$ 28.00
12	DQ16 14 ring set rectangle tray	8 $\frac{1}{4}$ x 4 $\frac{3}{4}$ x 1	\$ 29.95	\$ 33.55
13***	DQ29 9 earring rectangle tray	8 $\frac{1}{4}$ x 7 x 1	\$ 32.45	\$ 36.30
14	DQ22 12 earring rectangle tray	8 $\frac{1}{4}$ x 7 x 1	\$ 32.45	\$ 36.30
15	DQ20 20 earring rectangle tray	8 $\frac{1}{4}$ x 7 x 1	\$ 32.45	\$ 36.30
16	DQ46 6 bracelet rectangle tray	8 $\frac{1}{4}$ x 7 x 1	\$ 32.45	\$ 36.30
17	DQ49 9 bracelet rectangle tray	8 $\frac{1}{4}$ x 7 x 1	\$ 32.45	\$ 36.30
18	D910 Countertop pad	6 $\frac{1}{4}$ x 11 $\frac{1}{8}$ x 1 $\frac{1}{8}$	\$ 32.75	\$ 34.75
19	D915 Presentation serving tray	10 $\frac{1}{2}$ x 8 $\frac{1}{2}$ x 1	\$ 22.95	\$ 24.50

*While supplies last

** Shown colors available for immediate shipment. More colors available possible longer processing period. Minimum order may be required. Please call for details.

*** Available with pendant inserts.





9



13 (Pendant insert option available)



17



10



14



18



11



15



12



16



19

DISPLAYS



STACKABLE TRAYS

Leatherette Finish

AVAILABLE
COLORS



White



Black/Gray

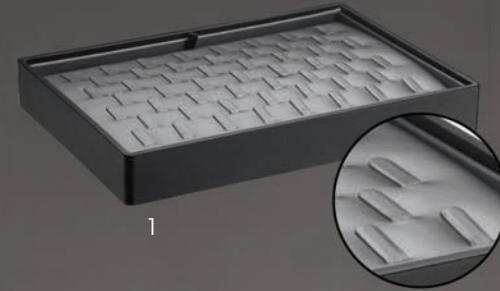
STACKABLE FOR EASY NIGHTLY LOCKUP!

Model #	Function	Size (WxDxH) in inches	Packed by	Unit Price
1	DTL11 53 Ring clips	12½ x 8¾ x 1⅞	1	\$ 42.50
2	DTL12 56 Ring slots in foam	12½ x 8¾ x 1⅞	1	\$ 42.50
3	DTL15 35 Ring slots	12½ x 8¾ x 1⅞	1	\$ 42.50
4	DTL20 25 Earring pads	12½ x 8¾ x 1⅞	1	\$ 42.50
5	DTL21 15 T-Bar long earring pads	12½ x 8¾ x 1⅞	1	\$ 42.50
6	DTL25 25 T-Bar short earring pads	12½ x 8¾ x 1⅞	1	\$ 42.50
7	DTL38 28 Pendant/earring pads	12½ x 8¾ x 1⅞	1	\$ 42.50
8	DTL60 12 Watch collars	12½ x 8¾ x 1⅞	1	\$ 42.50
9	DTS12 35 Ring slots in foam	9 x 7¼ x 1⅞	1	\$ 31.95
10	DTS15 20 Ring slots	9 x 7¼ x 1⅞	1	\$ 31.95
11	DTS26 16 Earring flap pads	9 x 7¼ x 1⅞	1	\$ 31.95
12	DTS31 18 Pendant/earring pads	9 x 7¼ x 1⅞	1	\$ 31.95
13	DTS32 6 pendant pad tray	9 x 7¼ x 1⅞	1	\$ 31.95
14	DTS46 6 Bracelet	9 x 7¼ x 1⅞	1	\$ 31.95

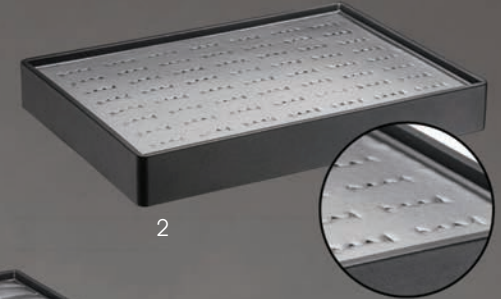
* Shown colors available for immediate shipment. More colors available possible longer processing period.

Minimum order may be required. Please call for details.

** Available with pendant inserts.



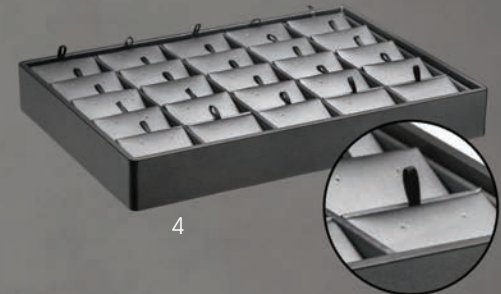
1



2



3

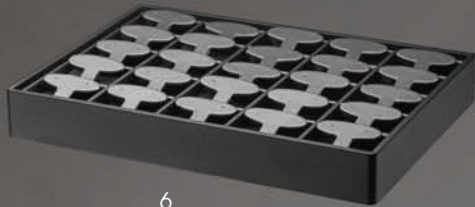


4





5



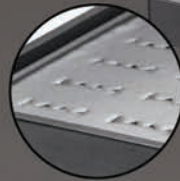
6



7



8



9



10



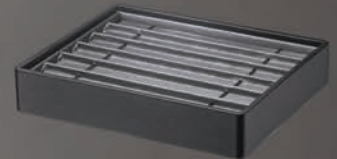
11



12



13



14

DISPLAYS



BASES & RISERS

Leatherette Finish

STANDARD
COLORS



White

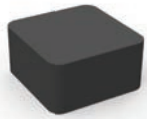


Cream

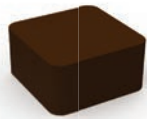


Black

ELITE
COLORS*

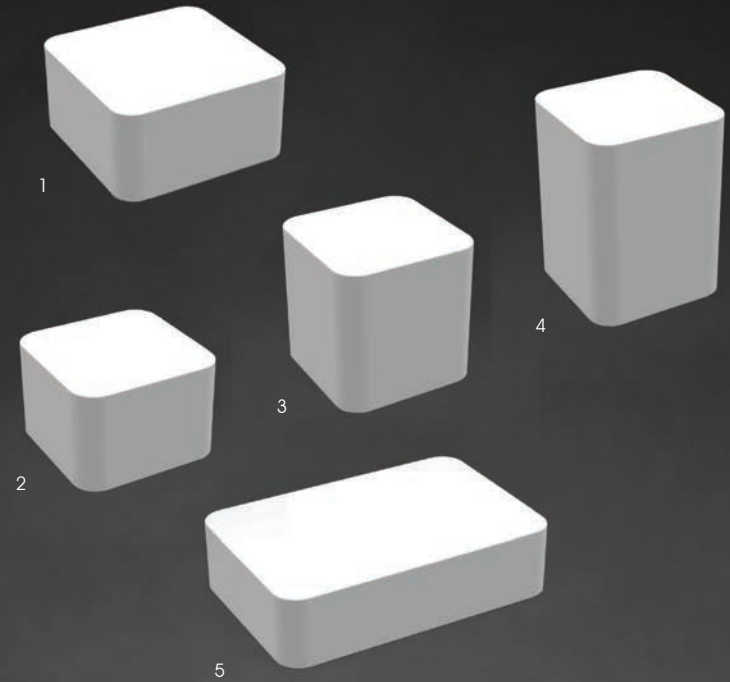


Steel grey

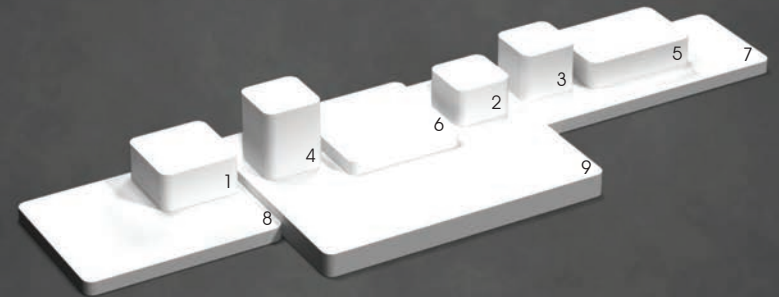


Brown

Model #	Description	Size (WxDxH) in inches	Unit Price	
			standard	elite
1	D914 Square pedestal	4 x 4 x 2	\$ 9.39	\$ 9.99
2	D911 Short square pedestal	3 x 3 x 2	\$ 7.49	\$ 7.99
3	D912 Medium square pedestal	3 x 3 x 3	\$ 8.29	\$ 8.99
4	D913 Tall square pedestal	3 x 3 x 4	\$ 10.49	\$ 10.99
5	D920 Long pedestal	6 x 4 x 1½	\$ 16.95	\$ 17.95
6	D950 Small square base	6 x 6 x ¾	\$ 14.49	\$ 15.49
7	D951 Medium base	8 x 10 x ¾	\$ 19.99	\$ 22.25
8	D952 Medium long base	14 x 6 x ¾	\$ 29.95	\$ 32.50
9	D953 Large base	15 x 12 x 1¼	\$ 31.95	\$ 34.50

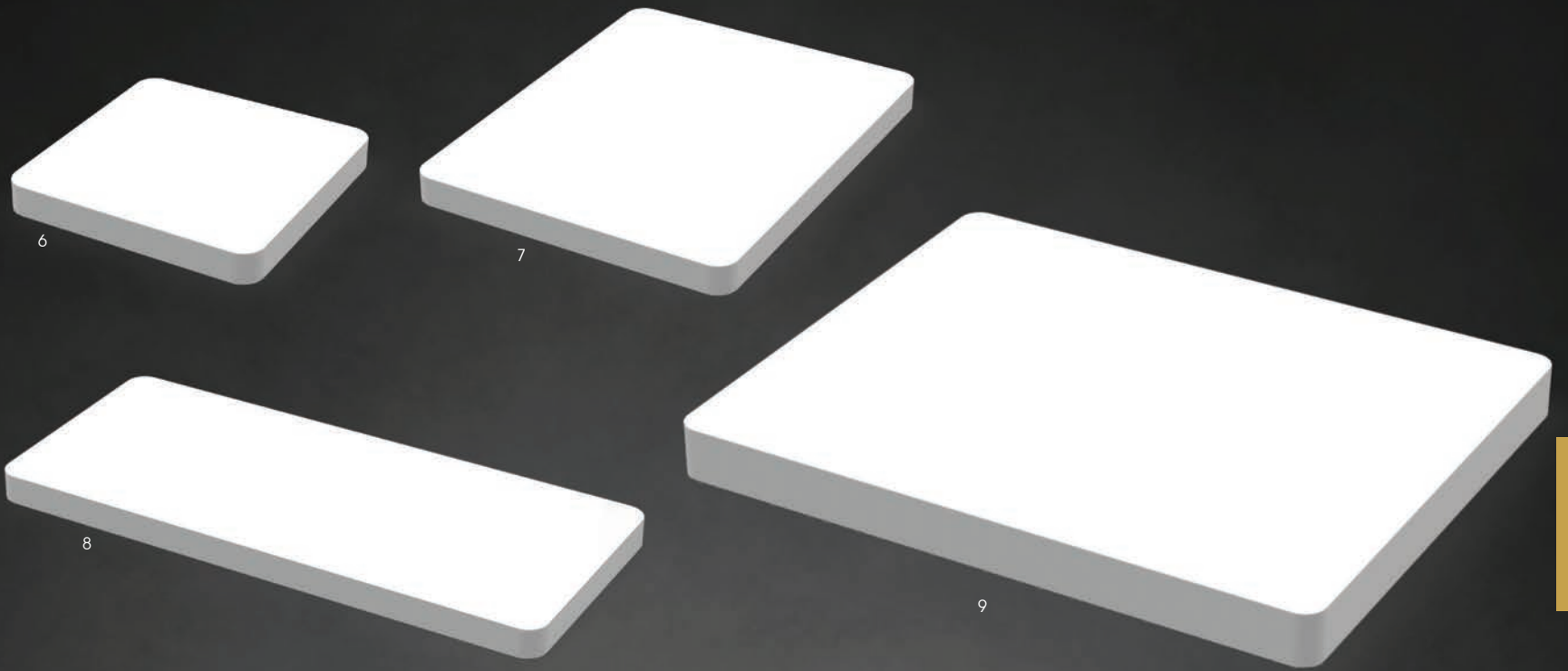


Sample setups

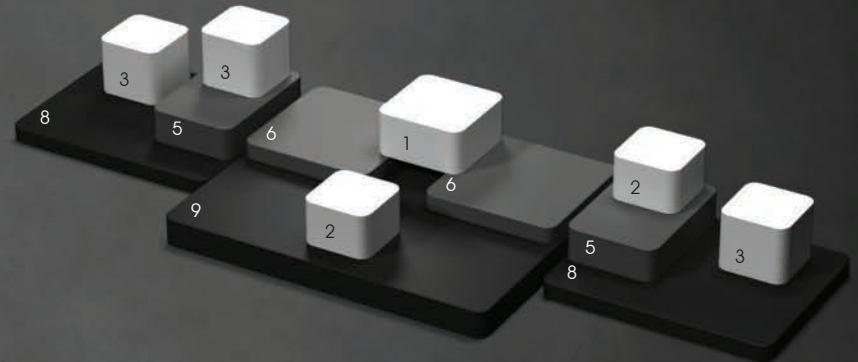
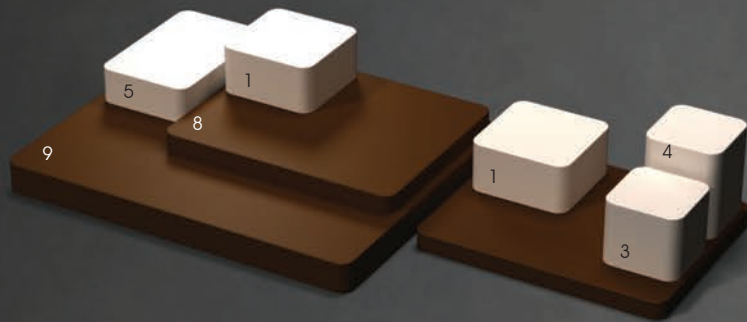


* Shown colors available for immediate shipment. More colors available possible longer processing period. Minimum order may be required. Please call for details.





DISPLAYS



SHOWCASE DISPLAY SETS

AVAILABLE
COLORS



1



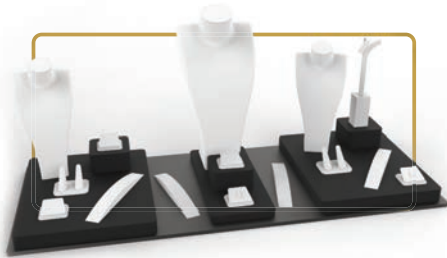
2



3



4



5



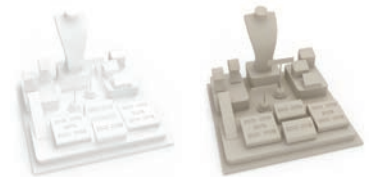
6



7



8



White
(WT)¹

Cream
(CR)¹



Black
(BK)¹



Brown
(BR)²



Steel Gray
(GR)²



White/Black
(WB)¹



Cream/Brown
(CB)³

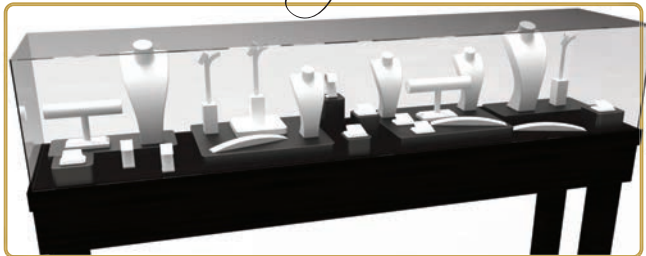


White/Steel Gray
(WG)³

DISPLAYS

Easy as 1·2·3

1. Purchase the display setup in your choice of color.
2. When your package arrives, follow our simple setup guide.
3. Add jewelry!

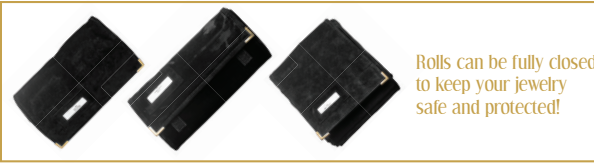


Model #	Description	Size (WxDxH) in inches	Packed by	Price ₁	Price ₂	Price ₃
1	SET11 Complete set for 15" wide showcase	15 x 15 x 7½	1 set	\$ 191.34	\$ 205.56	\$ 195.89
2	SET12 Complete set for 15" wide showcase	15 x 15 x 10	1 set	\$ 226.71	\$ 245.64	\$ 231.86
3	SET13 Complete set for 15" wide showcase	15 x 15 x 4½	1 set	\$ 160.27	\$ 173.74	\$ 163.42
4	SET31 Complete set for 3' wide showcase	36 x 15 x 6¾	1 set	\$ 369.17	\$ 400.78	\$ 382.54
5	SET32 Complete set for 3' wide showcase	36 x 15 x 16½	1 set	\$ 369.17	\$ 399.82	\$ 378.62
6	SET41 Complete set for 4' wide showcase	48 x 15 x 3¾	1 set	\$ 271.57	\$ 289.73	\$ 278.17
7	SET42 Complete set for 4' wide showcase	48 x 15 x 8	1 set	\$ 443.27	\$ 482.88	\$ 456.24
8	SET51 Complete set for 5' wide showcase	60 x 15 x 12	1 set	\$ 551.00	\$ 594.30	\$ 565.10

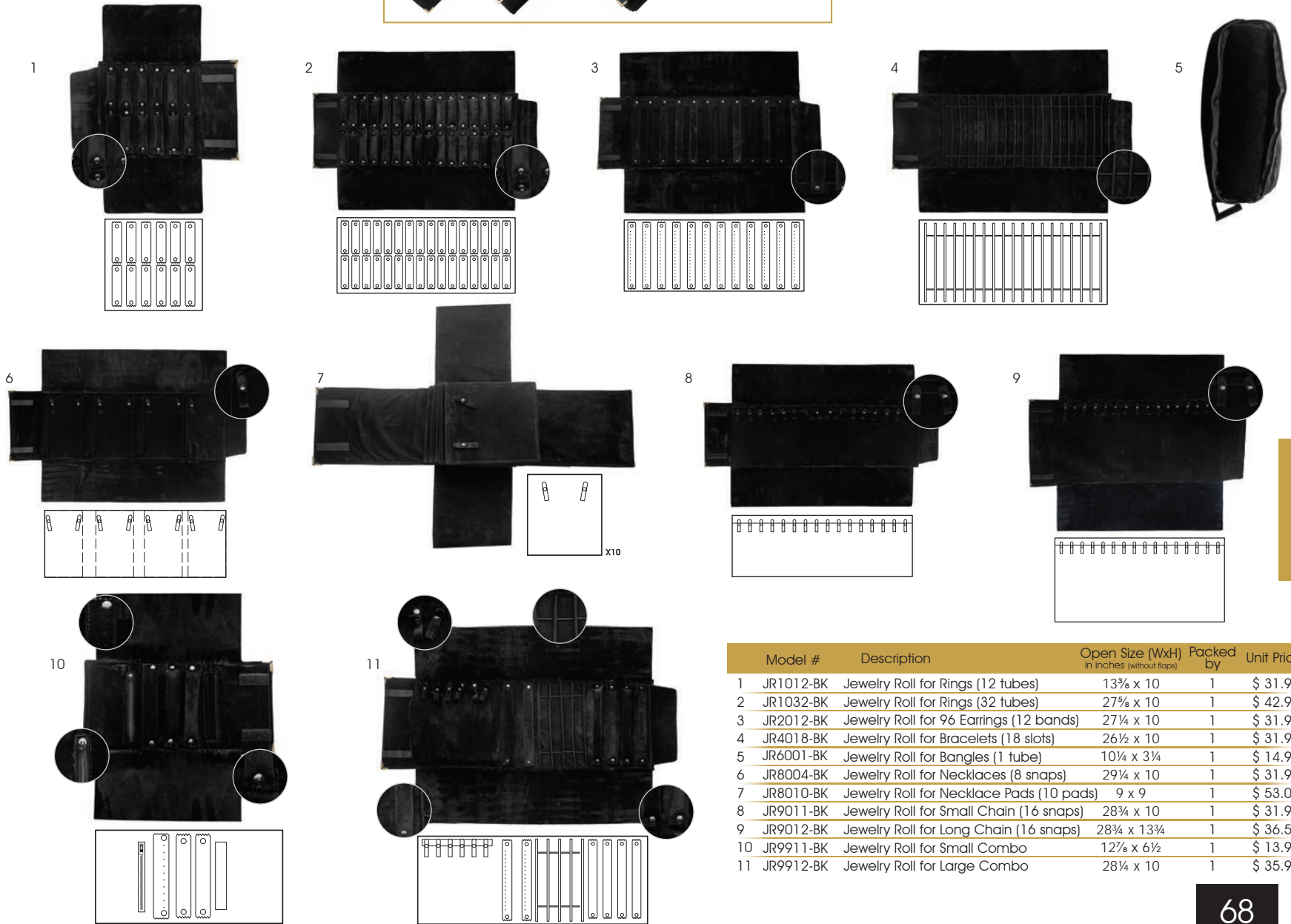


JEWELRY ROLLS

All premium suede material



Rolls can be fully closed to keep your jewelry safe and protected!



JEWELRY ROLLS

Model #	Description	Open Size (WxH) in inches (without flaps)	Packed by	Unit Price
1	JR1012-BK Jewelry Roll for Rings (12 tubes)	13 $\frac{3}{8}$ x 10	1	\$ 31.95
2	JR1032-BK Jewelry Roll for Rings (32 tubes)	27 $\frac{7}{8}$ x 10	1	\$ 42.95
3	JR2012-BK Jewelry Roll for 96 Earrings (12 bands)	27 $\frac{1}{4}$ x 10	1	\$ 31.95
4	JR4018-BK Jewelry Roll for Bracelets (18 slots)	26 $\frac{1}{2}$ x 10	1	\$ 31.95
5	JR6001-BK Jewelry Roll for Bangles (1 tube)	10 $\frac{1}{4}$ x 3 $\frac{3}{4}$	1	\$ 14.95
6	JR8004-BK Jewelry Roll for Necklaces (8 snaps)	29 $\frac{1}{4}$ x 10	1	\$ 31.95
7	JR8010-BK Jewelry Roll for Necklace Pads (10 pads)	9 x 9	1	\$ 53.00
8	JR9011-BK Jewelry Roll for Small Chain (16 snaps)	28 $\frac{3}{4}$ x 10	1	\$ 31.95
9	JR9012-BK Jewelry Roll for Long Chain (16 snaps)	28 $\frac{3}{4}$ x 13 $\frac{3}{4}$	1	\$ 36.50
10	JR9911-BK Jewelry Roll for Small Combo	12 $\frac{1}{8}$ x 6 $\frac{1}{2}$	1	\$ 13.95
11	JR9912-BK Jewelry Roll for Large Combo	28 $\frac{3}{4}$ x 10	1	\$ 35.95



PAPER TOTE BAGS

Bag Specifications

Exterior finish	Laminated paper	Handles	Rope
Printing options	Hot stamp single side / double side	Thickness	157 GSM

GLOSSY FINISH



AVAILABLE COLORS



Gold (GD)



Silver (SL)



Black (BK)



White (WT)

Model #	Description	Size (WxDxH) in inches	Packed by	Unit Price	
				50-500	500+
1	BT146 Small glossy paper bag	4¾ x 3 x 6¾	50	\$ 0.69	\$ 0.59
2	BT177 Medium glossy paper bag	7 x 3½ x 7	50	\$ 0.89	\$ 0.79
3	BT181 Large glossy paper bag	8 x 4 x 10	50	\$ 1.05	\$ 0.95



Gold (GD)



Silver (SL)



Black (BK)



White (WT)



Brown (BN)



Navy Blue (NB)



Burgundy (BY)

AVAILABLE COLORS

MATTE FINISH

Model #	Description	Size (WxDxH) in inches	Packed by	Unit Price	
				50-500	500+
1	BT246 Small matte paper bag	4¾ x 3 x 6¾	50	\$ 0.69	\$ 0.59
2	BT277 Medium matte paper bag	7 x 3½ x 7	50	\$ 0.89	\$ 0.79
3	BT281 Large matte paper bag	8 x 4 x 10	50	\$ 1.05	\$ 0.95
4	BT262 X-Large matte paper bag	16 x 6 x 12	50	\$ 1.79	\$ 1.59



1



2



3



4



MANHATTAN BAGS



AVAILABLE COLORS



Bag Specifications

Exterior finish	Recycled kraft papers	Handles	Twill
Printing options	Hot stamp single side / double side	Thickness	230 GSM-Extra thick

Model #	Description	Size (WxDxH) in inches	Packed by	Unit Price	
				100-500	500+
1	BK56 Small kraft bag	5 x 4 x 6	100	\$ 0.97	\$ 0.85
2	BK81 Medium kraft bag	8 x 4 x 10	100	\$ 1.29	\$ 1.15
3	BK13 Large kraft bag	10 x 5 x 13	100	\$ 1.59	\$ 1.43
4	BK62 X-Large kraft bag	16 x 6 x 12	100	\$ 2.35	\$ 2.09

LUXE BAGS



AVAILABLE COLORS



Model #	Description	Size (WxDxH) in inches	Packed by	Unit Price	
				100-500	500+
1	BL46 Small textured bag	4¾ x 3 x 6¾	100	\$ 1.39	\$ 1.29
2	BL77 Medium textured bag	7 x 3½ x 7	100	\$ 1.59	\$ 1.45
3	BL81 Large textured bag	8 x 4 x 10	100	\$ 1.89	\$ 1.75

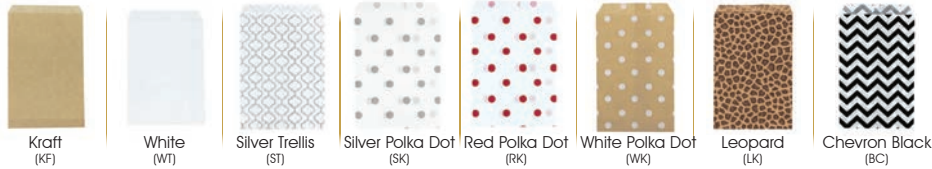
Bag Specifications

Exterior finish	Matte lamination w/ subtle texture	Handles	Twisted rope
Printing options	Hot stamp single side / double side	Thickness	230 GSM-Extra thick

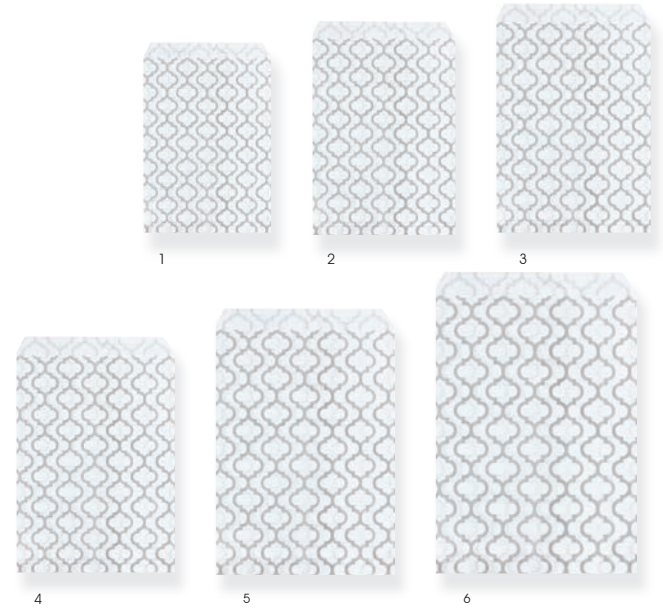
BAGS



MERCHANDISE PAPER BAGS



AVAILABLE COLORS



Model #	Description	Size (WxH) in inches	Packed by	Unit Price	
				Solid	Design
1	BM46 Merchandise bag	4 x 6	1,000	\$ 26.19	\$ 27.19
2	BM57 Merchandise bag	5 x 7	1,000	\$ 30.89	\$ 33.89
3	BM68 Merchandise bag	6 x 9	1,000	\$ 44.49	\$ 44.49
4	BM81 Merchandise bag	8½ x 11	1,000	\$ 61.89	\$ 67.79
5	BM13 Merchandise bag	10 x 13	1,000	\$ 75.95	N/A
6	BM15 Merchandise bag	12 x 15	1,000	\$ 92.19	N/A

THANK YOU PLASTIC BAGS



AVAILABLE STYLES



Model #	Description	Size (WxH) in inches	Packed by	Price
1	BP79-TY-BK Black and gold thank you bag	7 x 9	1,000	\$ 55.79
2	BP91-TY-BK Black and gold thank you bag	9 x 11	1,000	\$ 87.95
3	BP25-TY-BK Black and gold thank you bag	12 x 15	1,000	\$ 133.95
4	BP25-TY-SL Silver and black thank you bag	12 x 15	1,000	\$ 179.00
5	BP58-TY-SL Silver and black thank you bag	15 x 18	500	\$ 163.00



MAGNETIC GIFT BOXES

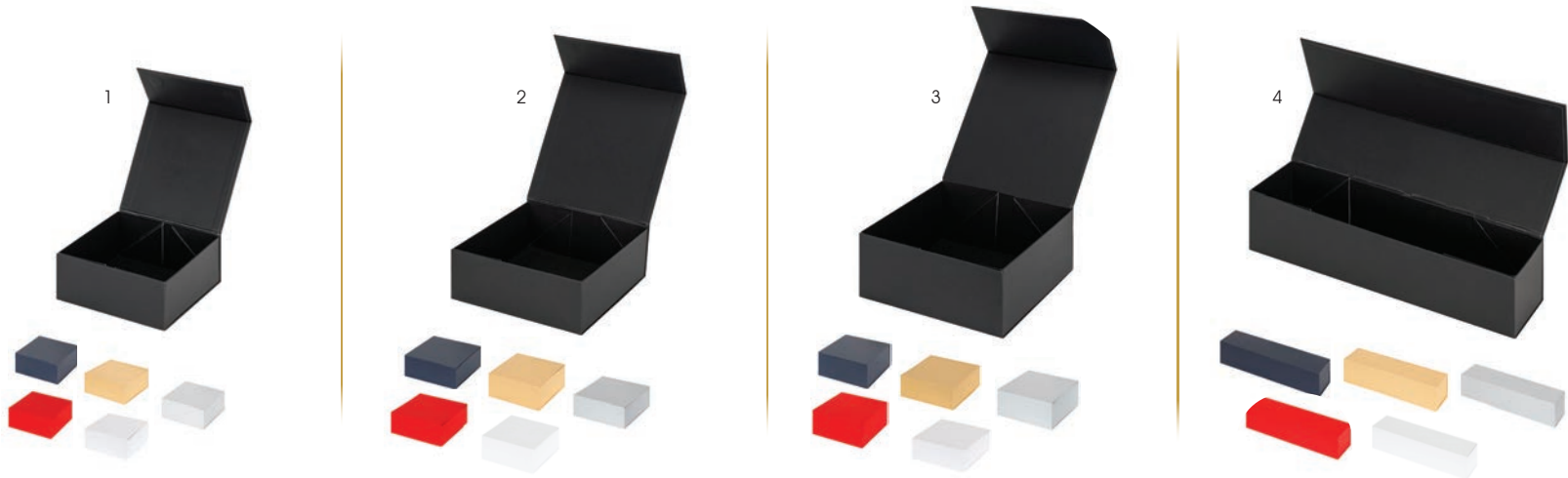


Elevate your gifts' value by enclosing them within our premium magnetic gift boxes, wrapped in luxurious paper. Perfect for corporate gifting, weddings, parties, and high-end retail. These rigid boxes ship flat, assemble effortlessly, and save storage space. The magnetic lid offers a sleek closure with a hidden magnet. Complete the look with our wholesale tissue paper and a gift ribbon. Our magnetic closure boxes provide a seamless and elegant packaging solution for your gifts.

Box Specifications

Exterior finish Soft touch paper Box shell paper board
 Printing options Hot stamp inside box / top of box

Model #	Size (WxDxH) in inches	Packed by	Unit Price	
			12-72	72+
1 BX266	6 x 6 x 2¾	12	\$ 5.95	\$ 5.55
2 BX288	8 x 8 x 3⅝	12	\$ 6.79	\$ 6.09
3 BX211	10 x 10 x 4½	12	\$ 8.79	\$ 7.95
4 BX235	3½ x 13½ x 3½	\$ 6.89	\$ 6.19	



All styles come in: Navy Blue, Kraft, Silver, Red, White.



RIBBON

GROSGRAIN RIBBON



Printing now available!
Call for details.

AVAILABLE
COLORS



Model #	Description	Size	Packed by	Unit Price	
				1-12	12+
R-GG38	Grosgrain ribbon	3/8" x 100 yards	1	\$ 9.75	\$ 8.99
R-GG58	Grosgrain ribbon	5/8" x 100 yards	1	\$ 15.29	\$ 13.99
R-GG78	Grosgrain ribbon	7/8" x 100 yards	1	\$ 19.55	\$ 17.99
R-GG15	Grosgrain ribbon	1 1/2" x 50 yards	1	\$ 17.55	\$ 16.15

PREMIUM SATIN RIBBON

AVAILABLE
COLORS



Printing now available!
Call for details.

	Model #	Description	Size	Packed by	Unit Price	
					1-12	12+
SINGLE FACE	R-SP38	Premium single face satin ribbon	3/8" x 100 yards	1	\$ 7.99	\$ 7.35
	R-SP58	Premium single face satin ribbon	5/8" x 100 yards	1	\$ 12.69	\$ 11.69
	R-SP78	Premium single face satin ribbon	7/8" x 100 yards	1	\$ 16.69	\$ 15.35
	R-SP15	Premium single face satin ribbon	1 1/2" x 50 yards	1	\$ 15.95	\$ 14.69
DOUBLE FACE	R-DP38	Premium double face satin ribbon	3/8" x 100 yards	1	\$ 9.25	\$ 8.49
	R-DP58	Premium double face satin ribbon	5/8" x 100 yards	1	\$ 15.25	\$ 14.05
	R-DP78	Premium double face satin ribbon	7/8" x 100 yards	1	\$ 18.35	\$ 16.89
	R-DP15	Premium double face satin ribbon	1 1/2" x 50 yards	1	\$ 17.99	\$ 16.55

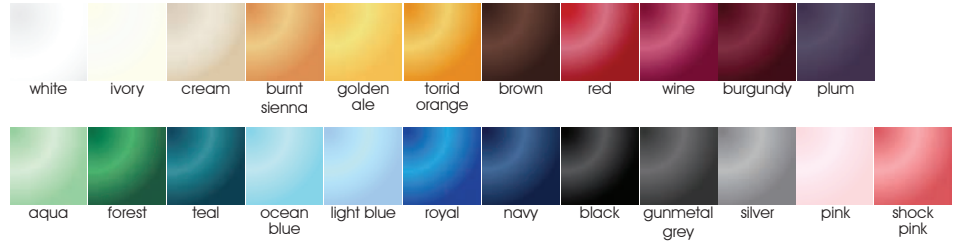
GIFT
PACKAGING



VALUE SINGLE FACE SATIN RIBBON



AVAILABLE
COLORS



Printing now available!
Call for details.

Model #	Description	Size	Packed by	Unit Price	
				1-12	12+
R-SV38	Value single face satin ribbon	3/8" x 100 yards	1 roll	\$ 5.49	\$ 4.99
R-SV58	Value single face satin ribbon	5/8" x 100 yards	1 roll	\$ 6.75	\$ 6.19
R-SV78	Value single face satin ribbon	7/8" x 100 yards	1 roll	\$ 9.49	\$ 8.75
R-SV15	Value single face satin ribbon	1 1/2" x 100 yards	1 roll	\$ 12.75	\$ 11.75

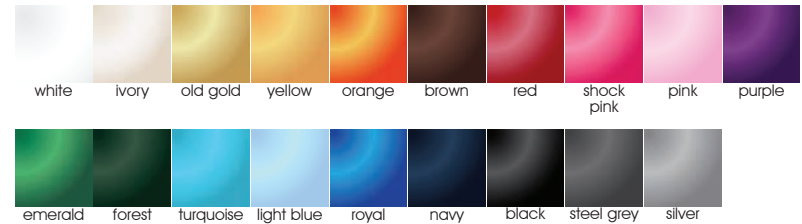
VALUE DOUBLE FACE SATIN RIBBON



Printing now available!
Call for details.



AVAILABLE
COLORS



Model #	Description	Size	Packed by	Unit Price	
				1-12	12+
R-DV58	Value double face satin ribbon	5/8" x 100 yards	1 roll	\$ 8.35	\$ 7.69
R-DV78	Value double face satin ribbon	7/8" x 100 yards	1 roll	\$ 10.35	\$ 9.55
R-DV15	Value double face satin ribbon	1 1/2" x 100 yards	1 roll	\$ 18.49	\$ 16.99

STRETCH LOOPS



AVAILABLE
COLORS



Model #	Description	Size	Packed by	Unit Price	
				1-12	12+
SL6	6" metallic stretch loop bow	6"	50	\$ 4.95	\$ 4.55
SL10	10" metallic stretch loop bow	10"	50	\$ 6.25	\$ 5.75
SL14	14" metallic stretch loop bow	14"	50	\$ 6.79	\$ 6.25
SL19	19" metallic stretch loop bow	19"	50	\$ 8.79	\$ 8.09



GIFT BOWS

NEW COLLECTION



Our pre-tied bows serve as the perfect adornments to all your gift boxes. With ready made bows for gifts, you can turn any box into a gift box. Simply peel off and place these stick-on-bows onto boxes. Smaller sized bows are the ideal for jewelry boxes.

Forever a classic, nothing says "gift" more than a box topped off with a bow!

AVAILABLE COLORS

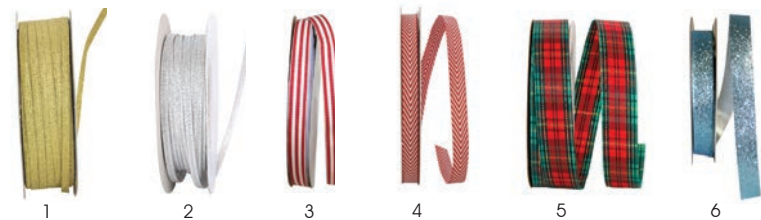


blue gold red green silver

Model #	Description	Size	Packed by	Unit Price
1 BO10	Metallic gift bows	1 1/4"	100	\$ 5.65
2 BO20	Metallic gift bows	2"	100	\$ 6.95
3 BO30	Metallic gift bows	2 3/4"	100	\$ 9.95

HOLIDAY RIBBON

NEW COLLECTION



Model #	Description	Size	Packed by	Unit Price
1 R-WOS-GD	Holiday woven shimmer-gold	1/8" x 50 yards	1	\$ 4.59
2 R-WOS-SL	Holiday woven shimmer-silver	1/8" x 50 yards	1	\$ 4.59
3 R-GGS-RD	Holiday grosgrain stripes- red/white	3/8" x 25 yards	1	\$ 15.19
4 R-PLD-RD	Holiday plaid-Red/Green	5/8" x 25 yards	1	\$ 6.09
5 R-HCC-RD	Holiday herringbone Red/White	3/8" x 25 yards	1	\$ 5.99
6 R-GLT-LB	Holiday glitter all ribbon-Lt blue	5/8" x 50 yards	1	\$ 12.49

TISSUE PAPER



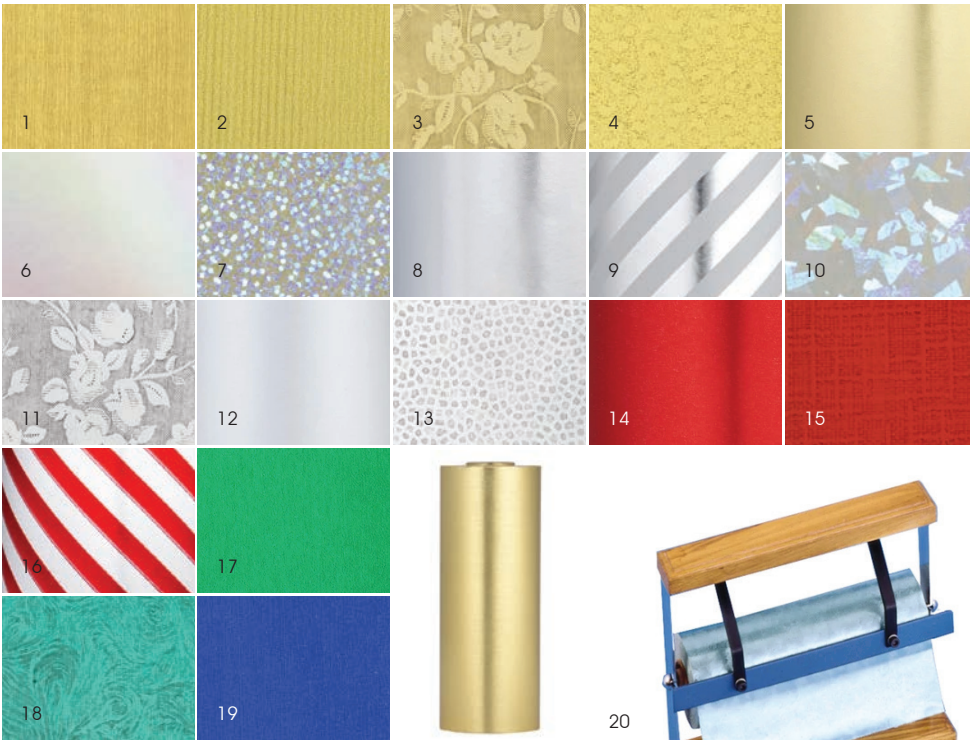
AVAILABLE COLORS



Printing now available!
Call for details.

Model #	Description	Size (inches)	Packed by	Unit Price	*White Price
TPS15	Solid tissue paper	15 x 20	480 sheets	\$ 23.95	\$ 14.25
TPS20	Solid tissue paper	20 x 30	480 sheets	\$ 45.35	\$ 26.35
TPM15	Metallic tissue paper	15 x 20	200 sheets	\$ 33.25	n/a
TPM20	Metallic tissue paper	20 x 30	200 sheets	\$ 54.49	n/a

WRAPPING PAPER



Model #	Description	Size	Packed by	Unit Price
1	WR-61.073 Gold taffeta	7.5" x 150'	1 roll	\$ 25.75
2	WR-61.071 Ribbed gold	7.5" x 150'	1 roll	\$ 25.75
3	WR-61.069 Floral gold	7.5" x 150'	1 roll	\$ 25.75
4	WR-61.054 Gold Nugget	7.5" x 150'	1 roll	\$ 25.75
5	WR-61.058 Bright gold	7.5" x 150'	1 roll	\$ 25.75
6	WR-61.097 Holographic rainbow	7.5" x 150'	1 roll	\$ 25.75
7	WR-61.096 Holographic city lights	7.5" x 150'	1 roll	\$ 25.75
8	WR-61.079 Bright silver	7.5" x 150'	1 roll	\$ 25.75
9	WR-61.075 Silver and white stripe	7.5" x 150'	1 roll	\$ 25.75
10	WR-61.095 Holographic cracked	7.5" x 150'	1 roll	\$ 25.75
11	WR-61.070 Floral silver	7.5" x 150'	1 roll	\$ 25.75
12	WR-61.059 Matte silver	7.5" x 150'	1 roll	\$ 25.75
13	WR-61.055 Silver mosaic	7.5" x 150'	1 roll	\$ 25.75
14	WR-61.081 Red	7.5" x 150'	1 roll	\$ 25.75
15	WR-61.074 Red linen	7.5" x 150'	1 roll	\$ 25.75
16	WR-61.08304 Red linen	7.5" x 150'	1 roll	\$ 25.75
17	WR-61.082 Dark green	7.5" x 150'	1 roll	\$ 25.75
18	WR-61.067 Blue gyro	7.5" x 150'	1 roll	\$ 25.75
19	WR-61.072 Blue taffeta	7.5" x 150'	1 roll	\$ 25.75
20	TS-61.092 Wrapping paper dispenser	N/A	1	\$ 23.95

GIFT PACKAGING



MIRRORS



1



2



3



4



5



6

NEW ITEM



7

NEW ITEM



8

NEW ITEM



9

NEW ITEM



GEM-ZOOM™

The all-new **Gem-Zoom U** is compatible with the latest cell phone models!
Portable, compact design.

Crisp and clear pictures and videos of diamonds, gemstones and jewelry pieces.

Includes: GEM-ZOOM U, a protective case, wide angle lens, USB charging cable, and a guide.

TS-29.936

\$ 99

visit gem-zoom.com
for more info

Model #	Description	Size (WxDxH) in inches	Packed by	Unit Price
1	TS-M1801 Folding faux leather mirror	7 x 9½ x 8¼	1	\$ 19.99
2	TS-M1804-1 Swivel base round top mirror	7 x 7 x 14	1	\$ 15.89
3	TS-M1252 Adjustable mirror w/ stand	8¾ x 8½ x 15¾	1	\$ 25.95
4	TS-M1819 Walnut stand w/ adjustable mirror	10½ x 4¼ x 12½	1	\$ 38.50
5	TS-M1801-1 Double sided adjustable mirror	14¼ x 3 x 19½	1	\$ 56.50
6	TS-MR107.03 Two sided w/ one side magnified	5 x 5 x 12	1	\$ 21.95
7	TS-MR110.01 Oval pedestal mirror-small	6¼ x 5½ x 12	1	\$ 29.95
8	TS-MR110.03 Oval pedestal mirror-large	10½ x 5½ x 18	1	\$ 49.95
9	TS-M1803 Faux leather snap folding mirror	7 x 9½ x 8¼	1	\$ 21.95

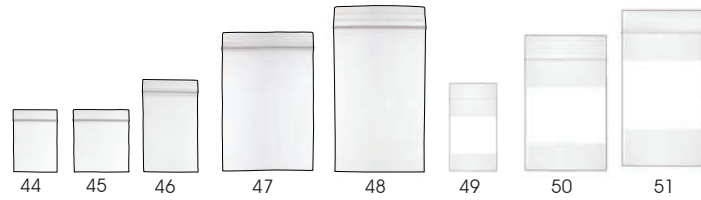


TOOLS & SUPPLIES



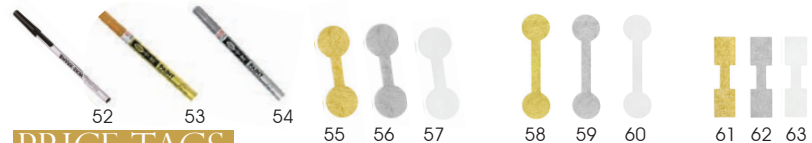
REPAIR ENVELOPES

Model #	Description	Series #	Size (WxH) in inches	Packed by	Price
1	TS-61.15101	Repair Envelope, Kraft	1-1000	5¼ x 3¼	1,000 \$ 69.00
2	TS-61.15201	Repair Envelope, Kraft	1001-2000	5¼ x 3¼	1,000 \$ 69.00
3	TS-61.15301	Repair Envelope, Kraft	2001-3000	5¼ x 3¼	1,000 \$ 69.00
4	TS-61.15401	Repair Envelope, Kraft	3001-4000	5¼ x 3¼	1,000 \$ 69.00
5	TS-61.15501	Repair Envelope, Kraft	4001-5000	5¼ x 3¼	1,000 \$ 69.00
6	TS-61.15601	Repair Envelope, Kraft	5001-6000	5¼ x 3¼	1,000 \$ 69.00
7	TS-61.15701	Repair Envelope, Kraft	6001-7000	5¼ x 3¼	1,000 \$ 69.00
8	TS-61.15801	Repair Envelope, Kraft	7001-8000	5¼ x 3¼	1,000 \$ 69.00
9	TS-61.15901	Repair Envelope, Kraft	8001-9000	5¼ x 3¼	1,000 \$ 69.00
10	TS-61.16001	Repair Envelope, Kraft	9001-10000	5¼ x 3¼	1,000 \$ 69.00
11	TS-61.151	Repair Envp w/ layaway, Kraft	1-1000	5¼ x 3¼	1,000 \$ 69.00
12	TS-61.152	Repair Envp w/ layaway, Kraft	1001-2000	5¼ x 3¼	1,000 \$ 69.00
13	TS-61.153	Repair Envp w/ layaway, Kraft	2001-3000	5¼ x 3¼	1,000 \$ 69.00
14	TS-61.154	Repair Envp w/ layaway, Kraft	3001-4000	5¼ x 3¼	1,000 \$ 69.00
15	TS-61.155	Repair Envp w/ layaway, Kraft	4001-5000	5¼ x 3¼	1,000 \$ 69.00
16	TS-61.156	Repair Envp w/ layaway, Kraft	5001-6000	5¼ x 3¼	1,000 \$ 69.00
17	TS-61.157	Repair Envp w/ layaway, Kraft	6001-7000	5¼ x 3¼	1,000 \$ 69.00
18	TS-61.158	Repair Envp w/ layaway, Kraft	7001-8000	5¼ x 3¼	1,000 \$ 69.00
19	TS-61.159	Repair Envp w/ layaway, Kraft	8001-9000	5¼ x 3¼	1,000 \$ 69.00
20	TS-61.160	Repair Envp w/ layaway, Kraft	9001-10000	5¼ x 3¼	1,000 \$ 69.00
21	TS-61.351	Repair Envelope, White	1-1000	5¼ x 3¼	1,000 \$ 69.00
22	TS-61.352	Repair Envelope, White	1001-2000	5¼ x 3¼	1,000 \$ 69.00
23	TS-61.353	Repair Envelope, White	2001-3000	5¼ x 3¼	1,000 \$ 69.00
24	TS-61.354	Repair Envelope, White	3001-4000	5¼ x 3¼	1,000 \$ 69.00
25	TS-61.355	Repair Envelope, White	4001-5000	5¼ x 3¼	1,000 \$ 69.00
26	TS-61.356	Repair Envelope, White	5001-6000	5¼ x 3¼	1,000 \$ 69.00
27	TS-61.357	Repair Envelope, White	6001-7000	5¼ x 3¼	1,000 \$ 69.00
28	TS-61.358	Repair Envelope, White	7001-8000	5¼ x 3¼	1,000 \$ 69.00
29	TS-61.359	Repair Envelope, White	8001-9000	5¼ x 3¼	1,000 \$ 69.00
30	TS-61.360	Repair Envelope, White	9001-10000	5¼ x 3¼	1,000 \$ 69.00
31	TS-61.651	Repair Envelope, Blue	1-1000	5¼ x 3¼	1,000 \$ 69.00
32	TS-61.652	Repair Envelope, Blue	1001-2000	5¼ x 3¼	1,000 \$ 69.00
33	TS-61.653	Repair Envelope, Blue	2001-3000	5¼ x 3¼	1,000 \$ 69.00
34	TS-61.654	Repair Envelope, Blue	3001-4000	5¼ x 3¼	1,000 \$ 69.00
35	TS-61.655	Repair Envelope, Blue	4001-5000	5¼ x 3¼	1,000 \$ 69.00
36	TS-61.656	Repair Envelope, Blue	5001-6000	5¼ x 3¼	1,000 \$ 69.00
37	TS-61.657	Repair Envelope, Blue	6001-7000	5¼ x 3¼	1,000 \$ 69.00
38	TS-61.658	Repair Envelope, Blue	7001-8000	5¼ x 3¼	1,000 \$ 69.00
39	TS-61.659	Repair Envelope, Blue	8001-9000	5¼ x 3¼	1,000 \$ 69.00
40	TS-61.660	Repair Envelope, Blue	9001-10000	5¼ x 3¼	1,000 \$ 69.00
41	TS-LTE3	Repair Envelope tray (small)	N/A	4 x 7½ x 4	1 \$ 8.95
42	TS-LTE4	Repair Envelope tray (large)	N/A	4 x 14¼ x 4	1 \$ 12.95
43	TS-LTE4A	Repair Envelope tray (acrylic)	N/A	3½ x 14¼ x 4½	1 \$ 24.95



ZIP LOCK BAGS

Model #	Description	Size (WxH) in inches	Packed by	Price
44	TS-ZB152	Clear economy zip bag	1½ x 2	100 \$ 0.85
45	TS-ZB22	Clear economy zip bag	2 x 2	100 \$ 0.90
46	TS-ZB23	Clear economy zip bag	2 x 3	100 \$ 1.09
47	TS-ZB34	Clear economy zip bag	3 x 4	100 \$ 1.89
48	TS-ZB35	Clear economy zip bag	3 x 5	100 \$ 2.29
49	TS-ZBW23	Clear economy zip bag white block	2 x 3	100 \$ 1.19
50	TS-ZBW34	Clear economy zip bag white block	3 x 4	100 \$ 1.79
51	TS-ZBW35	Clear economy zip bag white block	3 x 5	100 \$ 1.99



PRICE TAGS

Model #	Description	Size (WxH) in inches	Packed by	Price
52	TS-60.700	Pen for Sharkskin tags	N/A	1 \$ 1.05
53	TS-PM-GD	Metallic permanent marker	N/A	1 \$ 5.49
54	TS-PM-SL	Metallic permanent marker	N/A	1 \$ 5.49
55	TS-TA71	Round paper tags, Gold (includes pen)	1¾ x ½	1,008 \$ 15.50
56	TS-TA72	Round paper tags, Silver (includes pen)	1¾ x ½	1,008 \$ 15.50
57	TS-TA70	Round paper tags, White (includes pen)	1¾ x ½	1,008 \$ 13.50
58	TS-TA731	Round paper tags, Long, Gold (includes pen)	1¾ x ½	1,008 \$ 17.00
59	TS-TA732	Round paper tags, Long, Silver (includes pen)	1¾ x ½	1,008 \$ 17.00
60	TS-TA730	Round paper tags, Long, White (includes pen)	1¾ x ½	1,008 \$ 15.00
61	TS-TA721	Rectangular paper tags, Gold (includes pen)	1½ x ¾	1,008 \$ 15.50
62	TS-TA722	Rectangular paper tags, Silver (includes pen)	1½ x ¾	1,008 \$ 15.50
63	TS-TA720	Rectangular paper tags, White (includes pen)	1½ x ¾	1,008 \$ 13.50





All loupes include leather case

DIAMOND LOUPES

Model #	Description	Packed by	Price
1	TS-29.591 Large hexagon diamond loupe, Black, 10x	1	\$ 18.50
2	TS-29.592 Large hexagon diamond loupe, Silver, 10x	1	\$ 17.80
3	TS-29.615 Illuminated UV/LED loupe, Silver, 10x	1	\$ 45.00
4	TS-29.665 Single lens loupe, Chrome, 10x	1	\$ 19.49
5	TS-29.666 Single lens loupe, Black satin, 10x	1	\$ 19.49
6	TS-29.685 Diamond cut loupe, Black, 10x, 18mm	1	\$ 11.50
7	TS-29.686 Diamond cut loupe, Chrome, 10x, 18mm	1	\$ 11.50



14 - 15



16



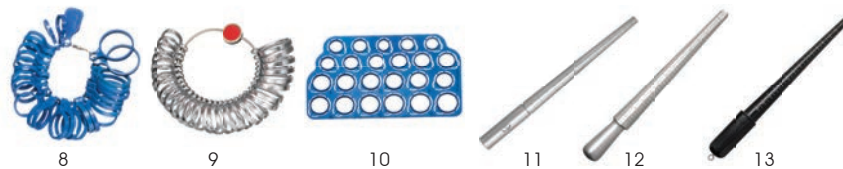
17



18

SCALES & TESTERS

Model #	Description	Packed by	Price
14	TS-50.271 Pocket Scale, 200 gram x 0.01 gram	1	\$ 45.59
15	TS-50.272 Pocket Scale, 1,000 gram x 0.1 gram	1	\$ 37.95
16	TS-56.926 SmartPro Gem-Eye I LED indicator gemstone tester	1	\$ 239.00
17	TS-56.927 SmartPro Reader-I	1	\$ 259.00
18	TS-56.925 Smartpro Screen-I synthetic colorless diamond screener	1	\$ 575.00



RING SIZERS

Model #	Description	Size (WxH) in inches	Packed by	Price
8	TS-35.255 Plastic finger gauge	N/A	1	\$ 18.99
9	TS-35.265 Comfort fit ring sizer, 3.5mm	N/A	1	\$ 23.75
10	TS-35.0895 Snap-out plastic ring sizer	N/A	12	\$ 7.79
11	TS-35.271 Alum ring stick w/ groove, 1-15	N/A	1	\$ 24.95
12	TS-35.0174 Universal aluminum ring stick	N/A	1	\$ 20.79
13	TS-35.0194A Plastic ring stick, Black	N/A	1	\$ 6.69



LIGHTS

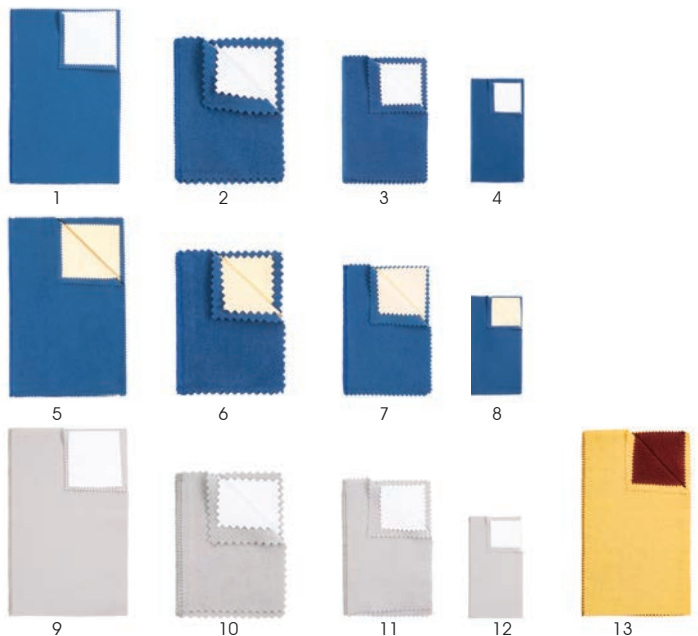
Model #	Description	Size (WxDxH)	Packed by	Price
19	TS-13.127 Black LED double-reach lamp w/ clamp	6" x 20" x 22"	1	\$ 109.00
20	TS-13.108 LED 90° sidearm bench lamp	17" x 22"	1	\$ 115.00
21	TS-13.109 Professional LED bench lamp w/ dimmer	22" x 32"	1	\$ 145.00
22	TS-13.107 LED gemstone lamp	15 1/8" x 6 5/8" x 18 1/2"	1	\$ 109.00



23

MICROSCOPE

Model #	Description	Packed by	Price
23	TS-29.900HD Full high definition digital microscope	1	\$ 299.00



NEW
PRODUCT
LINE

POLISHING CLOTHS

Model #	Description	Size (WxDxH) in inches	Packed by	Unit price 1-12	Unit price 12+	
1	TS-CL15-BLW	Jewelers polishing cloth blue/white	12 x 15	1	\$ 7.50	\$ 6.50
2	TS-CL10-BLW	Jewelers polishing cloth blue/white	10 x 10	1	\$ 4.80	\$ 3.99
3	TS-CL86-BLW	Jewelers polishing cloth blue/white	8 x 6	1	\$ 2.89	\$ 2.09
4	TS-CL64-BLW	Jewelers polishing cloth blue/white	6 x 4	1	\$ 2.25	\$ 1.59
5	TS-CL15-BLY	Jewelers polishing cloth blue/yellow	12 x 15	1	\$ 7.50	\$ 6.50
6	TS-CL10-BLY	Jewelers polishing cloth blue/yellow	10 x 10	1	\$ 4.80	\$ 3.99
7	TS-CL86-BLY	Jewelers polishing cloth blue/yellow	8 x 6	1	\$ 2.89	\$ 2.09
8	TS-CL64-BLY	Jewelers polishing cloth blue/yellow	6 x 4	1	\$ 2.25	\$ 1.59
9	TS-CL15-GR	Jewelers polishing cloth gray/white	12 x 15	1	\$ 7.50	\$ 6.50
10	TS-CL10-GR	Jewelers polishing cloth gray/white	10 x 10	1	\$ 4.80	\$ 3.99
11	TS-CL86-GR	Jewelers polishing cloth gray/white	8 x 6	1	\$ 2.89	\$ 2.09
12	TS-CL64-GR	Jewelers polishing cloth gray/white	6 x 4	1	\$ 2.25	\$ 1.59
13	TS-CL14-RD	Rouge cloth professional red/yellow	14 x 11½	1	\$ 8.75	\$ 7.25



17

CLEANERS

Model #	Description	Size (WxDxH) tank size	Packed by	Price
17	TS-23.640	Fabulustre ultrasonic cleaner, 1.5 pint	6" x 3½" x 2¾"	1 \$ 265.00



14

15

16

NEW
PRODUCT
LINE

JEWELRY CLEANERS

Model #	Description	weight	Unit price 1-24	Unit price 24+	
14	TS-JCH-RD	Home jewelry cleaner red w/ basket & brush	8oz.	\$ 4.75	\$ 3.95
15	TS-JCH-BL	Home jewelry cleaner red w/ basket & brush	8oz.	\$ 4.75	\$ 3.95
16	TS-SDC	Silver Cleaner with basket	8oz.	\$ 5.79	\$ 4.75



18

19

NEW
PRODUCT
LINE

GLOVES

Model #	Description	Packed by	Price
18	TS-JGL	Professional polishing gloves	1 \$ 16.99
19	TS-CGL	Cotton handling gloves	12 \$ 16.00



20

21

22

23

ANTI-TARNISH TISSUE

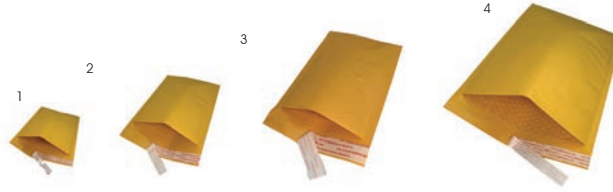
Model #	Description	Size (WxL) in inches	Packed by	Price
20	TS-61.0144	Anti-tarnish tissue	4 x 4	1,000 \$ 7.89
21	TS-61.145	Anti-tarnish tabs	1 x 1	100 \$ 8.89
22	TS-61.051	Anti-tarnish tissue	7 ¾ x 1100	1 \$ 18.05
23	TS-61.052	Anti-tarnish tissue	20 x 720	1 \$ 42.70



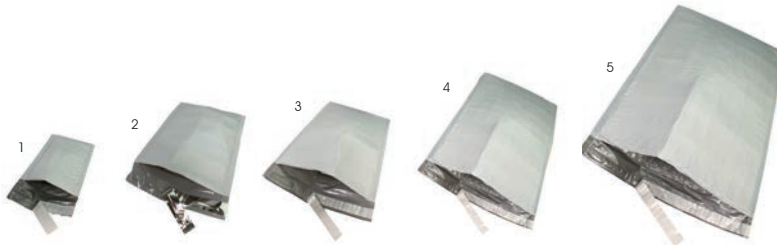
MAILERS

**NEW
PRODUCT
LINE**

KRAFT BUBBLE MAILERS



Model #	Description	Size (WxDxH) in inches	Packed by	Pack price		
				1-5	5+	
1	EMK000	Kraft bubble mailer	4 x 8	100	\$ 14.00	\$ 11.95
2	EMK0	Kraft bubble mailer	6½ x 10	100	\$ 18.00	\$ 16.00
3	EMK2	Kraft bubble mailer	8½ x 12	100	\$ 27.95	\$ 25.75
4	EMK4	Kraft bubble mailer	9½ x 14½	100	\$ 43.20	\$ 38.40



Model #	Description	Size (WxDxH) in inches	Packed by	Pack price		
				1-5	5+	
1	EMB000	Poly bubble mailers	4 x 8	100	\$ 16.74	\$ 14.88
2	EMB0	Poly bubble mailers	6½ x 10	100	\$ 21.95	\$ 19.95
3	EMB2	Poly bubble mailers	8½ x 12	100	\$ 29.79	\$ 27.59
4	EMB4	Poly bubble mailers	9½ x 14½	100	\$ 41.25	\$ 36.95
5	EMB6	Poly bubble mailers	12½ x 19	50	\$ 34.95	\$ 31.79



POLY BUBBLE MAILERS

WHITE POLY MAILERS

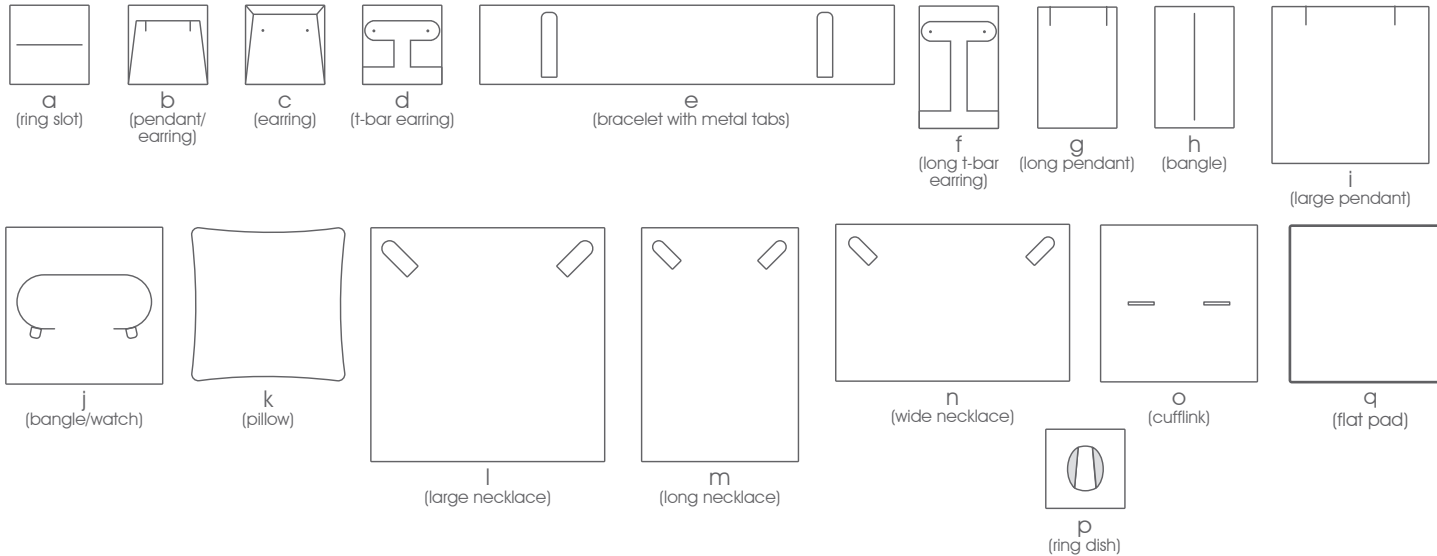


Model #	Description	Size (WxDxH) in inches	Packed by	Pack price		
				1-10	10+	
1	EMP69	White poly mailers	6 x 9	100	\$ 12.00	\$ 9.95
2	EMP92	white poly mailers	9 x 12	100	\$ 15.00	\$ 12.95
3	EMP13	white poly mailers	10 x 13	100	\$ 16.00	\$ 12.95



BOX INSERT STYLES

Letters below each insert drawing correspond to the type of insert found in the details of each box collection for a more clear representation of how the jewelry would be held in place.



PRINTING COLORS



Colors shown are for representation only. Actual printed color may vary. More colors available upon request (charges may apply).



CUSTOM

Your packaging, unequivocally yours

Looking to go the custom route? Allure is a full-service jewelry packaging provider offering in-house custom design and manufacturing service. We'll work with you so that you can lay claims on your own box, display, pouch or bag.

Minimum order quantity

Plastic: 1,000 units for single size / 3,000 combined multiple sizes

Wood: 500 units for single size / 1,500 combined multiple sizes

Cardboard: 2,500 units for single size / 6,000 combined multiple sizes



Take these steps to have your dream box take shape:

Step 1:

The base layer and style

What will the core of your box be? For boxes, choose between metal, plastic, wood, or cardboard. It's your call if you want a two piece box (cardboard) or a hinged box.

Step 2:

The covering and color

In simplest terms, this means deciding if you prefer leatherette, suede, velvet, (or other materials) decorative papers, or wood finish options.

Once you've chosen your covering, you can now think of texture. The options are limitless, but we'll get your imagination firing: brushed, smooth, grainy, glossy, etc.

With that complete, you can choose your color. Give us the Pantone or Hex color code of your choice.

Step 3:

The interior reveal

As you've done in step 2, you'll decide on an interior material and color for the inside lid.

Here is where you'll also think of the function of the box and the type of pad that is required. Refer to the previous page for diagrams. Choose the material and color for that, too.

Step 4:

The outer packaging

You can do a two piece packer with a full size cover or a mid-sized cover. Or, you can opt for a sleeve style packer. Think of color contrasts and paper styles here.

Step 5:

Your Logo

Choose the placement of your logo and its color for the box and packer.

Logo can be placed in the box top, inner box lid, and packer top.

Email your artwork to us in a Vector file format.

Have your packaging tell a story... We'll craft it to be memorable and compelling.



TERMS & CONDITIONS / PRINTING FEES

PLACING AN ORDER

You may call to place your order during regular business hours with our friendly customer service staff at 800.859.1788 or place your order any time by fax at 212.807.7088 or online at allurepack.com.

PRICING

Pricing within catalog is subject to change without notice. Boxes, bags, pouches and folders are sold by the pack. The quantity of the pack is shown alongside the pricing of a single unit.

PAYMENT

Payment can be made via all major credit cards or COD. Terms of net 30 days is available with approval of credit. Any dispute of charges must be made within 30 days of the invoice date.

SHIPPING

Orders that do not include imprinting will be shipped the same day or next business day. Printed orders will ship within 7-10 days. All orders are shipped via major carriers unless otherwise specified. Prices do not include shipping cost.

If for any unforeseen reason a product is not available to ship due to limitation of stock, we will make every effort to ship as soon as possible.

RETURNS/REFUNDS

Returns are accepted within 60 days of shipment. All returns must be authorized by an Allure representative in advance.

Printed or custom products cannot be cancelled/refunded once production has begun. Printed orders cannot be returned unless damaged. Damaged product is to be reported within 10 days of delivery.

IMPRINTING

Imprinting on packaging items is available in standard pigment and metallic colors as a foil hotstamp.

\$ 60 imprinting fee (includes first 200 prints)
\$ 0.27 each additional print.

PLATES & ARTWORK

\$ 69 box/pouch
\$ 89 small/medium bag plate charge
\$ 99 large bag/gift box plate charge

All artwork is to be emailed to printing@allurepack.com in a vector format (.ai, .eps or .pdf). If the artwork needs to be recreated due to a low quality image or incompatible format, an additional charge may be added (\$80/hour).

While we aim for the most accurate representation in our catalog, actual product may differ than pictured.

PROMOTIONAL DETAILS

Only one offer may be applied per order.

FREE SHIPPING

Applies to first order placed over the phone or online. Minimum order is \$ 75.

FREE SAMPLE PACKAGE

Free package of six select elite boxes from our stock or choose up to six of our stock collection boxes (up to \$ 15 value). Keep for your own use to have, examine, test, etc. One per customer. Please call to order.



ALLURE

BOX & DISPLAY COMPANY

800.859.1788
212.807.7070

info@allurepack.com

allurepack.com

141 Lanza Ave • Building 29N
Garfield, NJ 07026

Imprint, Deliver, *Impress!*

Amplify your brand with cohesive packaging.

Make it your own!

We offer printing on:

Jewelry boxes, Pouches, Folders, Gift Boxes
Gift bags, Tissue paper, Ribbon, and more.

