

TEST REPORT

No : CT16-054763

7. Test Results

Test Items		Test Results			Test method	Testing Environment
		Early Conc. (CFU/mL)	After 24 h Conc (CFU/mL)	Reduction rate of bacteria(%)		
Antibacterial test for <i>Escherichia coli</i>	BLANK	3.2×10^5	6.7×10^5	-	KCL-FIR-1003 : 2011	(37.0 ± 0.1) °C (32.5±0.2) %RH
	clairB	3.2×10^5	< 10	99.9		
Antibacterial test for <i>Pseudomonas aeruginosa</i>	BLANK	3.5×10^5	7.2×10^5	-		
	clairB	3.5×10^5	< 10	99.9		
Antibacterial test for <i>Staphylococcus aureus</i>	BLANK	2.3×10^5	4.1×10^5	-		
	clairB	2.3×10^5	< 10	99.9		

※ CFU : Colony Forming Unit

※ Inoculum concentration(CFU/mL) : *Escherichia coli* : 3.2×10^5 , *Pseudomonas aeruginosa* : 3.5×10^5 ,
Staphylococcus aureus : 2.3×10^5

※ Test strain : *Escherichia coli* ATCC 8739
Pseudomonas aeruginosa ATCC 15442
Staphylococcus aureus ATCC 6538P

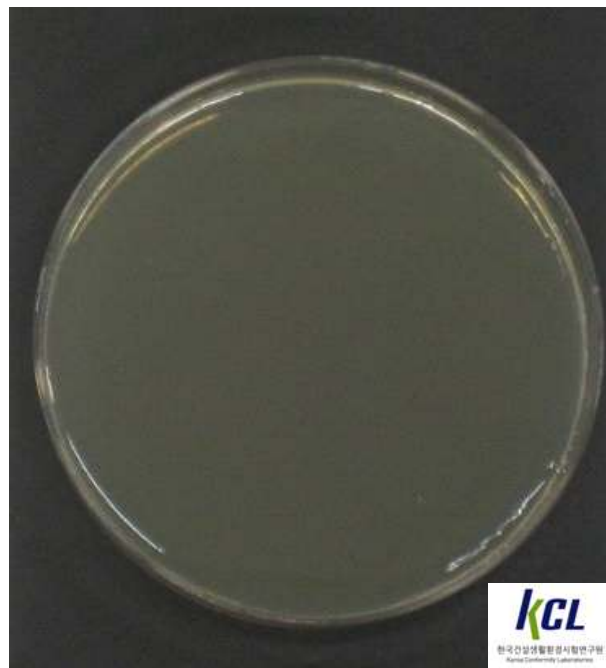
※ Sample : 5 cm × 5 cm, Blank : Stomacher film : 5 cm × 5 cm

TEST REPORT

No : CT16-054763



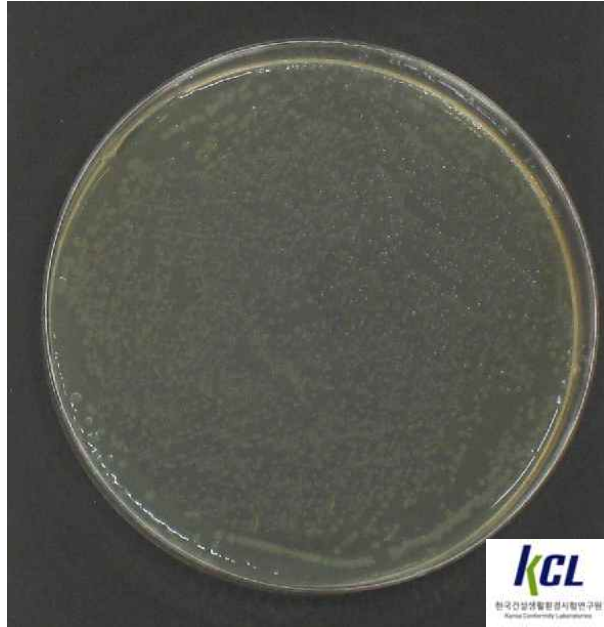
<Picture 1. *Escherichia coli* - BLANK (24 h)>



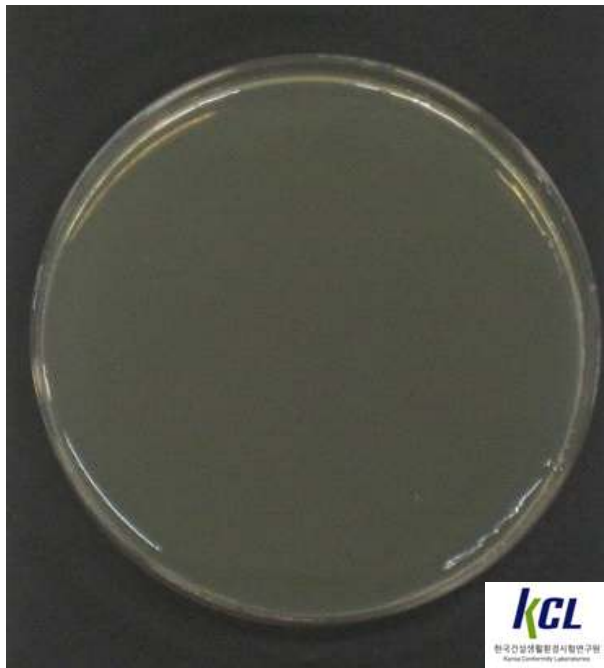
<Picture 2. *Escherichia coli* - clairB (24 h)>

TEST REPORT

No : CT16-054763



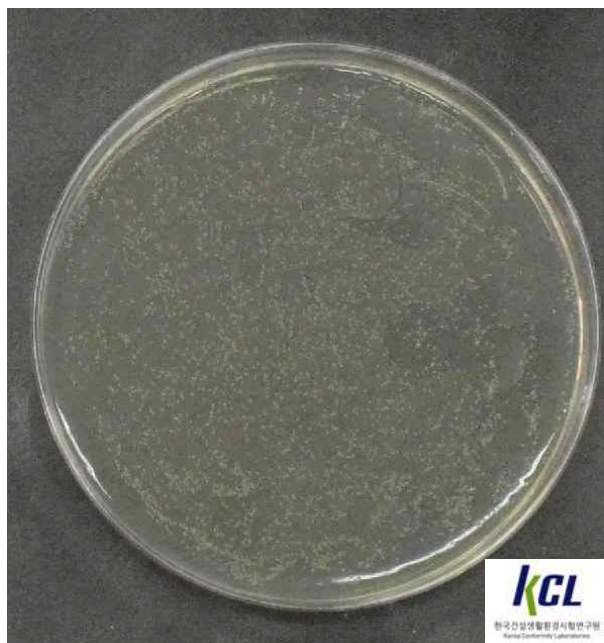
<Picture 3. *Pseudomonas aeruginosa* - BLANK (24 h)>



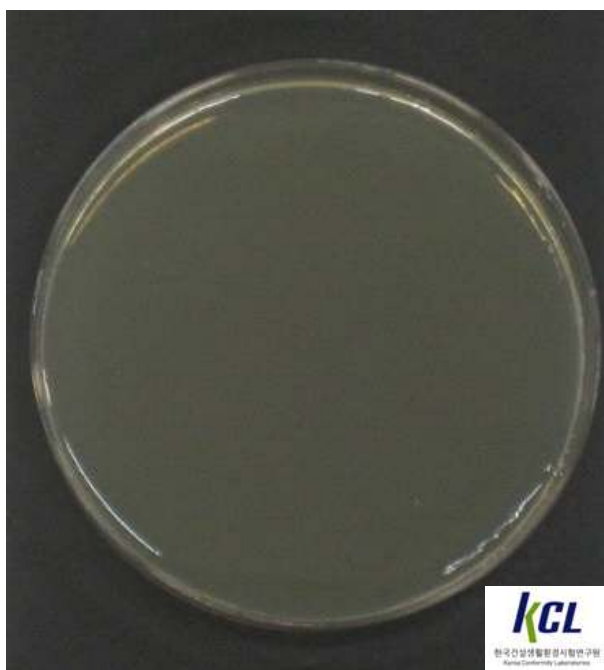
<Picture 4. *Pseudomonas aeruginosa* - clairB (24 h)>

TEST REPORT

No : CT16-054763



<Picture 5. *Staphylococcus aureus* - BLANK (24 h)>



<Picture 6. *Staphylococcus aureus* - clairB (24 h)>

----- End of Report -----