

12025 NE Marx St. Portland, OR 97220
503-253-3511 / www.greenleaflab.orgGreen Leaf Lab proudly follows TNI 2009
Quality Standards

Lifter

Date Sampled: 10/12/18 00:00

Earth Florida

Date Accepted: 10/12/18

Results Valid Until: 10/12/19

M #: M#1004199

Sample ID: G8J0240-01

Matrix: Industrial Hemp

Potency Analysis

Date/Time Extracted: 10/16/18 12:53

Analysis Method/SOP: 215

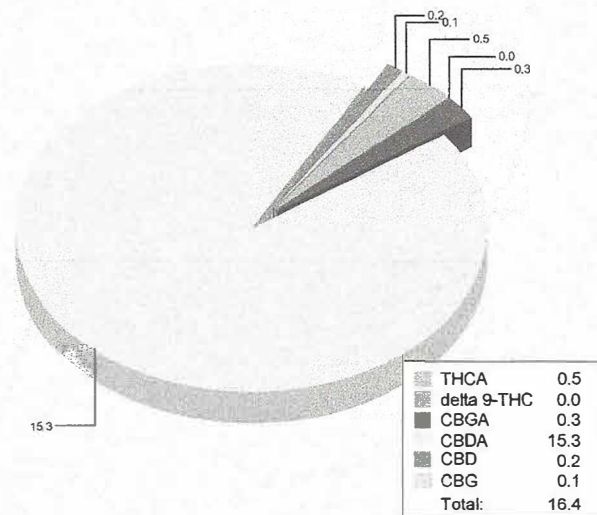
Date/Time Analyzed: 10/17/18 16:21

Batch Identification: 1842022

Cannabinoids (% weight)

| | |
|------------------------------|---------|
| Total CBD ((CBDA*0.877)+CBD) | 13.58 |
| THCA | 0.5265 |
| delta 9-THC | 0.03115 |
| delta 8-THC | < LOQ |
| THCV | < LOQ |
| CBD | 0.1888 |
| CBDA | 15.27 |
| CBDV | < LOQ |
| CBDVA | < LOQ |
| CBN | < LOQ |
| CBGA | 0.3426 |
| CBG | 0.07895 |
| CBC | < LOQ |
| CBCA | < LOQ |
| CBLA | < LOQ |

Cannabinoids Profile



<LOQ - Results below the Limit of Quantitation - Compound not detected. LOQ = 5 PPM (mg/L)

For Potency only delta 9-THC, THCA, CBD, CBDA are ORELAP accredited analytes.

Water Activity Action Level is 0.65. Results above 0.65 fail state testing requirements and will be highlighted Red.

Eric Wendt
Chief Science Officer - 10/18/2018



Certificate of Analysis

Powered by Confident Cannabis
2 of 2

Trim Ready/CBD Hemp Direct

Sample: 1809NVC0923-4845

Strain: Juicy Fruit

Batch #: NA; Lot #: NA;

Sample Received: 09/05/2018; Report Created: 09/07/2018

NV 89119
info@trimready.com
(702) 338-6811



Juicy Fruit

Plant, Flower - Cured

Harvest Process Lot: ; METRC Batch: ; METRC Sample:

Pesticides

| Analyte | LOQ | Limit | Mass | Status |
|--------------------|-------|--------|--------|--------|
| | PPM | PPM | PPM | |
| Abamectin | 0.010 | 0.050 | <0.010 | Pass |
| Acequinocyl | 0.010 | 4.000 | <0.010 | Pass |
| Beta-Cyfluthrin | 0.005 | 4.000 | <0.005 | Pass |
| Bifenazate | 0.010 | 15.000 | <0.010 | Pass |
| Bifenthrin | 0.005 | 0.050 | <0.005 | Pass |
| Cypermethrin | 0.005 | 0.050 | <0.005 | Pass |
| Daminozide | 0.010 | 0.050 | <0.010 | Pass |
| Dimethomorph | 0.010 | 60.000 | <0.010 | Pass |
| Etoxazole | 0.010 | 7.000 | <0.010 | Pass |
| Fenhexamid | 0.010 | 30.000 | <0.010 | Pass |
| Flonicamid | 0.010 | 7.000 | <0.010 | Pass |
| Fludioxonil | 0.010 | 0.020 | <0.010 | Pass |
| Imidacloprid | 0.010 | 0.050 | <0.010 | Pass |
| Mylobutanil | 0.010 | 4.000 | <0.010 | Pass |
| Paclbutrazol | 0.010 | 0.050 | <0.010 | Pass |
| Piperonyl Butoxide | 0.010 | 10.000 | <0.010 | Pass |
| Pyrethrins | 0.010 | 1.000 | <0.010 | Pass |
| Quintozene | 0.005 | 0.200 | <0.005 | Pass |
| Spinetoram | 0.010 | 1.700 | <0.010 | Pass |
| Spinosad | 0.010 | 10.000 | <0.010 | Pass |
| Spirotetramat | 0.010 | 10.000 | <0.010 | Pass |
| Thiamethoxam | 0.010 | 0.020 | <0.010 | Pass |
| Trifloxystrobin | 0.010 | 11.000 | <0.010 | Pass |

Pass

Microbials

| Analyte | Limit | Mass | Status |
|--------------------------------------|-------|----------|--------|
| | CFU/g | CFU/g | |
| Aspergillus flavus | | Negative | Pass |
| Aspergillus fumigatus | | Negative | Pass |
| Aspergillus niger | | Negative | Pass |
| Aspergillus Terreus | | Negative | Pass |
| Bile-Tolerant Gram-Negative Bacteria | 1000 | 260 | Pass |
| Coliforms | 1000 | 960 | Pass |
| E. Coli | | Negative | Pass |
| Salmonella | | Negative | Pass |
| Yeast & Mold | 10000 | 3600 | Pass |

Pass

TNTC = Too Numerous to Count; Unless otherwise stated all quality control samples performed within specifications established by the Laboratory. Analyzed according to SOP-030 (Aerobic Bacteria), SOP-031 (Yeast and Mold), SOP-032 (Enterobacteriaceae), SOP-033 (Coliforms), SOP-033.8-11 (E. coli), SOP-034 (Salmonella). PCR analysis of Aspergillus, E. coli and Salmonella are NOT ISO 17025 accredited.

Heavy Metals

| Analyte | LOQ | Limit | Mass | Status |
|---------|---------|----------|----------|--------|
| | PPB | PPB | PPB | |
| Arsenic | 118.371 | 2000.000 | <118.371 | Pass |
| Cadmium | 118.371 | 820.000 | 123.580 | Pass |
| Lead | 118.371 | 1200.000 | <118.371 | Pass |
| Mercury | 47.348 | 400.000 | <47.348 | Pass |

Pass

LOQ = Limit of Quantitation; The reported result is based on a sample weight with the applicable moisture content for that sample; Unless otherwise stated all quality control samples performed within specifications established by the Laboratory. Pesticides analyzed by SOP-026/036.

Foreign Matter Notes:

General Notes:

LOQ = Limit of Quantitation; The reported result is based on a sample weight with the applicable moisture content for that sample; Unless otherwise stated all quality control samples performed within specifications established by the Laboratory. Metals analyzed by SOP-023.

Mycotoxins

| Analyte | LOQ | Limit | Mass | Status |
|--------------|------|-------|------|--------|
| | PPB | PPB | PPB | |
| Aflatoxins | 4.00 | 20.00 | 6.40 | Pass |
| Ochratoxin A | 2.00 | 20.00 | 3.40 | Pass |

Pass

LOQ = Limit of Quantitation; The reported result is based on a sample weight with the applicable moisture content for that sample; Unless otherwise stated all quality control samples performed within specifications established by the Laboratory. Mycotoxins analyzed by SOP-024.

6631 Schuster Street
Las Vegas, NV
(702) 826-2700
http://www.nvcann.com

Brenda Shalloo

Brenda Shalloo
Scientific Operations Director

Confident Cannabis
All Rights Reserved
support@confidentcannabis.com
(866) 506-5866
www.confidentcannabis.com



All pass limits are as specified in NAC 453A and DPBH Policies. Unless otherwise stated all quality control samples performed within specifications established by the Laboratory. This product has been tested by NV Cann Labs using valid testing methodologies and a quality system as required by Nevada state law. Values reported relate only to the product tested. NV Cann Labs makes no claims as to the efficacy, safety or other risks associated with any detected or non-detected levels of any compounds reported herein. This Certificate shall not be reproduced except in full, without the written approval of NV Cann Labs. Uncertainty information is available upon request. pH/Water activity is NOT ISO 17025 accredited.



NV CANNLABS
FROM ART TO SCIENCE



PJLA
Testing
Accreditation #97453

Certificate of Analysis

Powered by Confident Cannabis
1 of 2

Trim Ready/CBD Hemp Direct

Sample: 1809NVC0923-4845

Strain: Juicy Fruit

Batch #: NA; Lot #: NA;

Sample Received: 09/05/2018; Report Created: 09/07/2018

NV 89119
info@trimready.com
(702) 338-6941
Lic. #

Juicy Fruit

Plant, Flower - Cured

Harvest Process Lot: ; METRC Batch: ; METRC Sample:



The photo on this report is of a sample collected by the lab and may vary from the final packaging

Safety

| | | |
|------------------------|----------------------|------------------------|
| Pass Pesticides | Pass Microbials | Pass Mycotoxins |
| Not Tested Solvents | Pass Heavy Metals | Pass Foreign Matter |

Cannabinoids

| | | | |
|--------------|-----------------------------|--------------------------------|-------------------|
| <LOQ THCa | <LOQ Total Potential THC | 15.059% Total Potential CBD | 10.5% Moisture |
|--------------|-----------------------------|--------------------------------|-------------------|

| Analyte | LOQ | Mass | Mass |
|--------------|-------|---------------|---------------|
| | % | % | mg/g |
| THCa | 0.242 | <0.242 | <2.42 |
| Δ9-THC | 0.242 | <0.242 | <2.42 |
| CBD | 0.242 | 5.668 | 56.68 |
| CBDa | 0.242 | 10.708 | 107.08 |
| CBC | 0.242 | 0.689 | 6.89 |
| CBG | 0.242 | <0.242 | <2.42 |
| CBN | 0.242 | <0.242 | <2.42 |
| THCV | 0.242 | <0.242 | <2.42 |
| Δ8-THC | 0.242 | <0.242 | <2.42 |
| CBGa | 0.242 | 0.324 | 3.24 |
| CBDV | 0.242 | <0.242 | <2.42 |
| Total | | 17.389 | 173.89 |

Total THC = THCa * 0.877 + Δ9-THC

Total CBD = CBDa * 0.877 + CBD

LOQ = Limit of Quantitation; The reported result is based on a sample weight with the applicable moisture content for that sample; Unless otherwise stated all quality control samples performed within specifications established by the Laboratory. Cannabinoids analyzed by SOP-021.

Notes:

Terpenes

| | | |
|--------------|----------|----------|
| Cinnamon | Hops | Wood |
|--------------|----------|----------|

| Analyte | LOQ | Mass | Mass |
|---------------------|------|-------|--------|
| | mg/g | mg/g | % |
| β-Caryophyllene | 0.10 | 1.47 | 0.147 |
| α-Humulene | 0.10 | 0.64 | 0.064 |
| (-)-Guaiaol | 0.10 | 0.56 | 0.056 |
| β-Myrcene | 0.10 | 0.50 | 0.050 |
| α-Pinene | 0.10 | 0.43 | 0.043 |
| Caryophyllene Oxide | 0.10 | 0.14 | 0.014 |
| α-Bisabolol | 0.10 | <0.10 | <0.010 |
| α-Terpinene | 0.10 | <0.10 | <0.010 |
| Camphene | 0.10 | <0.10 | <0.010 |
| δ-3-Carene | 0.10 | <0.10 | <0.010 |
| δ-Limonene | 0.10 | <0.10 | <0.010 |
| γ-Terpinene | 0.10 | <0.10 | <0.010 |
| Geraniol | 0.10 | <0.10 | <0.010 |
| Linalool | 0.10 | <0.10 | <0.010 |
| Nerolidol | 0.10 | <0.10 | <0.010 |
| Ocimene | 0.10 | <0.10 | <0.010 |
| (-)-β-Pinene | 0.10 | <0.10 | <0.010 |
| (-)-Isopulegol | 0.10 | <0.10 | <0.010 |
| p-Cymene | 0.10 | <0.10 | <0.010 |
| Terpinolene | 0.10 | <0.10 | <0.010 |

LOQ = Limit of Quantitation; The reported result is based on a sample weight with the applicable moisture content for that sample; Unless otherwise stated all quality control samples performed within specifications established by the Laboratory. Terpenes analyzed by SOP-022.

6631 Schuster Street
Las Vegas, NV
(702) 826-2700
http://www.nvcann.com

Hui Wang
Hui Wang
Scientific Director

Confident Cannabis
All Rights Reserved
support@confidentcannabis.com
(866) 506-5866
www.confidentcannabis.com



All pass limits are as specified in NAC 453.A and DPBH Policies. Unless otherwise stated all quality control samples performed within specifications established by the Laboratory. This product has been tested by NV Cann Labs using valid testing methodologies and a quality system as required by Nevada state law. Values reported relate only to the product tested. NV Cann Labs makes no claims as to the efficacy, safety or other risks associated with any detected or non-detected levels of any compounds reported herein. This Certificate shall not be reproduced except in full, without the written approval of NV Cann Labs. Uncertainty information is available upon request. pH/Water activity is NOT ISO 17025 accredited.