

Technical Product Data

WRS - Rescue Raft 4.0 (PU Hull)

REF - WARRPU400+BAG

Updated 12-2022

Technical data	WARRPU400+Bag
Length	400 cm
Width	185 cm
Tube width	52 cm
Floor	I Beam Self Bailing
Chambers	4 + 1 + 3 (Removable Cross Tubes x 3)
Valves	8 Leaffield C7 Inflation valves, 5 Leaffield A6 Over Pressure valves
Capacity	1000 kg
Fabric	Quad-ply PVC with PU Hull
Weight	60kg excluding valise
Max Tube Pressure	Tubes - 3 psi , Floor - 1.5 psi
Working Temperature	-30 to +70 celcius
Pack Size	100cm length x 100cm width x 60cm height
Carry Handles	6 Webbing with hose protection
External D Rings	12 x " 316 Stainless Steel
Cross Tubes	3 x Quick-E Removable
Seating	Side Tube wear patches
Identificiation	Identification badge - Custom Logo possible
Standards	ISO9001 Factory
Warranty	3 year Fabric Warranty

Compatible Accessories

Inflation

Manual Inflation - WRS Pump Ref - PU2+PUFVA1 with Leaffield valve adaptor

or

Compressed Air Inflation - Boat Inflation kit - Ref - INK1

Emergency Repair

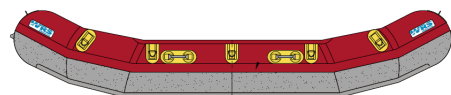
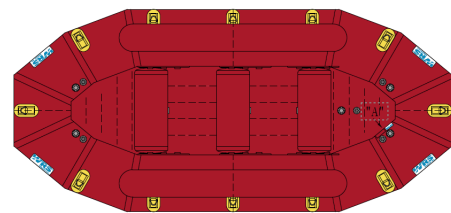
PVC Fabric repairs using WRS repair kit - Ref EMPFPK1

or

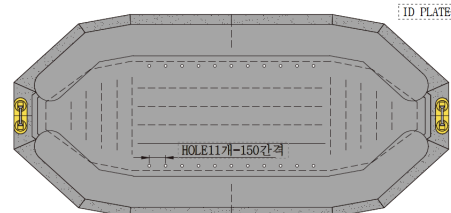
Professional Repair service from WRS international

Propulsion

WRS Connector Split paddle or raft style single bladed paddle Ref- PEWRS3



SIDE VIEW



BOTTOM VIEW