

Godox

Ver. EN33TH202271 1601 601-308

PHOTOGRAPHY LIGHTING

Godox

GODOX Photo Equipment Co.,Ltd.

Factory Add: 4th Floor of Building 1, 1st to 4 th Floor of Building 2, 4th Floor of Building 3,1st to 4th Floor of Building 4, Yaochuan Industrial Zone, Tangwei Community, Fuhai Street, Bao'an District, Shenzhen 518103, China

TEL: +86-(0)755-25701197,25726373

FAX: +86-(0)755-25723423

Email: godox@godox.com

www.godox.com

[f](#) godoxglobal [y](#) GODOX Global [i](#) godoxphotoequipment [t](#) GODOX Photo [d](#) godoxofficial

2022 | 33rd
EDITION



About US

Godox has been committed to providing consumers with professional and high quality lighting solutions in photography & videography, enabling more people to enjoy the fun of light shaping, inspiring the endless photography & videography possibility. By the vision of becoming a leading manufacturer with a world famous brand, we hope to continuously contribute to the development of lighting industry. At Godox, we have never stopped expanding our lineup to meet the different needs, and now we are branching out to include audio. Godox has become a solid name in the photography & videography market and we expect the same for our audio. Dream it until we make it.

Founded in 1993 as a high-tech manufacturing facility specializing in lighting and audio equipment, Godox has now become a lighting equipment expert and innovator of gears for photographers, videographers, filmmakers and more. Driven by the mission of offering great lighting and audio solutions, Godox has been always pushing the boundaries of technology, and constantly bringing professional products to the industries. With over one thousand highly qualified staffs and four manufacturing

facilities, factories covering more than 30,000 square meters, including an electronic products assembling center, a plastic injection and tooling center, a hardware processing center, a fabric accessory assembling center. Godox runs a diverse businesses profile with main product categories in photography, broadcasting, cinematography and videography, and audio industry. Through open collaboration and innovation, we establish industry partnerships worldwide, which would allow people to share great moments with our professional lighting and audio gears anywhere in the world.

Godox benefits from creative talent pool in R&D, Design, Sales and Management teams for sustained success. Drawing on these resources, we are able to keep developing more and more professional and creative products every year to keep up to date with the market. Godox will further ramp up investment into innovation, taking innovation to the next level and constantly delivering value to the industry and society at large. We will continue working to providing products combining advanced technology with dynamic designs.

CONTENTS



04 • Studio Pack

P2400

10 • Studio Flash

E250/E300

MS200/MS300/MS200V/MS300V

SK300II/SK400II/SK300IIV/SK400IIV

DS300II/DS400II

GS200II/GS300II/GS400II

DP400III/DP600III/DP800III/DP1000III

DP400IIIV/DP600IIIV/DP800IIIV/DP1000IIIV

QS400II/QS600II/QS800II/QS1200II

QT1200IIM/QT600IIM/QT400IIM

QT1200IIIM/QT600IIIM/QT400IIIM

32 • Power Inverter

LP750X

36 • Monolight

AD100Pro

AD200Pro

AD300Pro

AD400Pro

AD600B/AD600BM

AD600Pro

AD1200Pro

AR400

56 • Camera Flash

V1

V860III

V850III

V350

TT685II

TT350

TT600/TT600s

TT560II/TT520II

68 • Macro Light

MF12

MF-R76

Ring72

76 • Camera Flash Power Pack

PB960

77 • Hybrid LED & Flash

FV150/FV200

LF308

80 • Smartphone lighting

R1

M1

LEDM32/LEDM150

83 • Trigger

XProII / XPro

X1

X2

XT16

DM-16/DMR-16

RT-16/RTR-16

87 • Camera Remote Control

RMII

FC16

87 • Timer Release

RC Series

88 • Parabolic Light Focusing System

P68/P88/P128/P158

92 • Photography Accessories

Scrim Flag Kit

Monolight Softbox

Godox Mount Softbox

Bowens Mount Softbox

Umbrella Softbox

Parabolic Softbox

Quick Release Parabolic Softbox

Collapsible Lantern Softbox

S Bracket

Camera Flash Softbox

Parabolic Photography Umbrella

Gels & Diffusion

Light Shaper

Camera Flash Accessories

Reflector Board

Tabletop Shooting & Photo Booth

Lighting Stands & Mounting

Carrying Bag

STUDIO PACK



Photo by Sarah Edmunds

P2400



P2400

P2400 is an excellent and full-featured power pack with integrating technology, engineering, and craftsmanship, its power, speed, and consistency are all breathtaking. The full power output 2400Ws enables to completely achieved photograpers's imagination in any kinds of shooting senarios. And power is just one of the advantages of P2400 power pack.

Key Features

- Breakthrough power catch any detail of the shooting subjects and output quality shots to make sure high working efficiency.
- Incredibly short flash duration of up to 1/17800s and fast recycling time in 0.7s at full power-enables photographers to freeze every instant dynamic movement and never miss a wonderful moment with handy adjustment.
- Stable color temperature make sure uncompromising color consistency-satisfy strict requirement on color accuracy and save time,money in post -production.
- Supports fully symmetrical and asymmetrical power distribution-allows photographers to experiences tremendous creative freedom with various lighting possibilities.
- Large high-definition color screen-intuitive and precise control.
- Built-in two different frequency systems includes Godox 2.4G wireless system and 433MHz wireless trigger system-allow users have more freedom to switch frequency,avoid the interference and enjoy a reliable shooting environment.

P2400 Power Pack

H2400P

A powerful pack must match with a powerful flash head. H2400P flash head equipped with advanced light tube technology. And it is designed to support zoom function and compatible with various of light shaping tools to set photographers creativity free.



Key Features

- Zoomable flash head--rotate the knob to adjust light range and intensity
- Ultrabright 60W LED modeling light--offers impressive brightness which is equivalent with to 300W halogen lamp, and allows users to own precise preview
- Bowers mount--suitable for wide range of lighting modifiers and help to open up more possibilities



Accessories

Physical connection-H2400P head extention sync cord allows photographers to avoid any interference and maintain the sync speed without delay even under extreme conditions



EC2400 H2400P Head Extension Cord 5M



EC2400L H2400P Head Extension Cord 10M

The high quality carrying bags support photographers to safely carry and store both P2400 power pack and H2400P flash heads.



CB-26 Carrying bag for H2400P



CB-25 Carrying bag for P2400

Tech Specs

Model	P2400	
Output Power	2400Ws	
Flash Duration Time(fastest)	≈1/17800s(t0.1)	
Stops	1.0-10	
Color TemperatureStability	±75K over full power range	
Flash Mode	Manual Flash	
	Multi-flash	
Multi-flash	√ (times: 100, frequency: 100)	
Delay Flash	0.01-30s	
Mask	√	
Fan	√	
Beeper	√	
LED Modeling Light	60W	
Optic Receiver Flash	S1/S2	
Flash Duration Time Indication	√	
Display	3.5inch color screen	
2.4G Wireless Transmission		
Wireless Function	2.4G	Receiver, Off
Controllable Receiver Groups	2.4G	16 groups: 0-9, A, B, C, D, E, F
Transmission Range	2.4G	Approx. 100m
Channel	2.4G	32 channels from 1 to 32
ID	2.4G	99 IDs from 01 to 99
433MHz Wireless Transmission		
Wireless Function	433MHz	Receiver, Off
Controllable Receiver Groups	433MHz	16 groups: 0-9, A, B, C, D, E, F
Transmission Range	433MHz	Approx. 30m
Channel	433MHz	32 channels from 1 to 32
Power		
Power Supply	AC Power Supply	
Recycling Time(fastest)	≈0.7s at full power	
Energy-saving	Can be set to power off automatically after 30, 60, 120 minutes	
Sync Triggering Method	3.5mm sync cord	
Size		
Dimension	330*287*202mm	
Net Weight	≈11Kg	

Tech Specs

Model	H2400P	
Output Power	2400Ws	
Fan	√	
LED Modeling Light	60W	
Length	5m	
Dimension	197*323*134mm	
Net Weight	≈3.2kg	

R2400



R2400

Designed for the P2400 studio pack system, the R2400 is the most powerful ring flash form Godox. It combines 2400Ws strong power and even illumination of a ring flash and is compatible with the professional light focusing system, to provide striking results for fine-art portrait, fashion, editorial, and any genre or style you want to create.



Key Features

- 2400Ws on-axis light source delivers beautiful highlights without harshness and renders even illumination while maintaining enhanced details.
- Consistent output with a reliable performance of freezing and high-volume continuous shootings.
- Compatible to P158 kit as a powerful but extremely even fill-light wrapping around the subject without casting the additional shadow.
- Comes with a foldable bracket to mount on a light stand and an umbrella mount for use with umbrella.
- FLB-90 Quick Rotating Camera Bracket helps to shift from horizontal to vertical composition in a blink without shifting the axis.
- Share the same accessories system with R1200ring flash.

Tech Specs

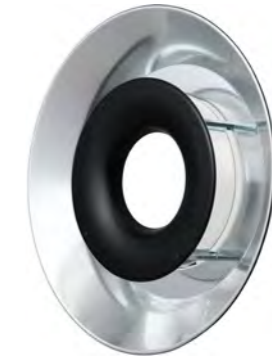
Model	R2400
POWER	2400Ws
Guide No. (1/1 output)	64(with RFT-21 reflector)
100% Light Brightness (Lux, 0.5m distance)(=)	10200
Working Temperature	-10°C-50°C
Modeling Lamp (LED)	4300±200k; 40W
Color Temperature	5800±200k
Dimension	205x205x80mm
Net Weight	1.8Kg

RFT-21 Reflector

Designed for R2400, the RFT-21 Reflector can spread the light out, illuminate a larger area than the ring flash head itself and soften the shadows. Godox offers two dedicated reflectors(white and silver coating). The silver reflector is very reflective and brings more contrast compared with white one which provides extra softness.



RFT-21W(white)



RFT-21S(silver)

Honeycomb series

A dedicated set of three pieces include BD-09A,BD-09B and BD-09C in different angel.



BD-09B (20°)



BD-09A (30°)



BD-09C (40°)

FLB-90 Quick Rotating Camera Bracket Kit

Change from horizontal to vertical composition in a blink without shifting the axis.



Horizontal



Vertical

STUDIO FLASH



E Series



E250/E300

E series flashes are lightweight, compact and durable with multiple functions. They are designed to delivering high-quality lighting solutions include different lighting kits for photographers at different level. It is suitable for various shooting scenarios like portrait, fashion, wedding, and e-commerce product photography in studio and workshops.

Key Features

- Precise output displays on LED panel
- Wireless power control and flash triggering system
- 150W modeling lamp and can be adjust in 9 levels
- Anti-preflash function
- Auto memory and recovery of adjusted panel settings
- Quickly installs various light modifiers such as softbox

Tech Specs

Model	E250	E300
Max Power (Ws)	250Ws	300Ws
Guide Number (m ISO 100)	53	58
Color Temperature	5600±200K	
Operating Voltage	AC100-120V/60Hz or AC200-240V/50Hz	
Power Output Control	1.0-3.0(1/8-1/1)	
Modeling Lamp	75W	
Modeling Lamp Level	9 Levels(L1 to L9)	
Recycle Time	0.4-2.5s	
Triggering Method	Sync cord, Test button, Slave triggering, Wireless control port	
Flash Duration	1/2000-1/800s	
Fuse	5A	
Dimension	Flash diameter 11.8cm, height of flash with handle 20cm, length of flash with modeling lamp 20.3cm	
Net Weight (Approx.)	1.19kg	1.31kg

Accessory

Dedicated Accessories dedicated for E series studio flash



SN-01 Snoot

BD-03 Barndoor Kit



SB-MS Softbox 50x70cm

SB-MS Softbox 60x60cm



SB-FS Softbox 50x70cm

SB-FS Softbox 60x60cm

E250-F E250 Dual Studio Flashes Kit

- E250 Flash Head x2
- Barndoor Kit BD-03 x1
- Carrying Bag CB-04 x1
- Light Stand 304 (2m height) x2
- Wireless Radio Trigger RT-16 x1
- Softbox SB-MS (60x60cm) x1
- Umbrella UB-002 (33"black&silver) x1



E300-F E300 Dual Studio Flashes Kit

- E300 Flash Head x2
- Barndoor Kit BD-03 x1
- Carrying Bag CB-04 x1
- Light Stand 304 (2m height) x2
- Wireless Radio Trigger RT-16 x1
- Softbox SB-MS (60x60cm) x1
- Umbrella UB-002 (33"black&silver) x1



E250-D

E250 Trio of Studio Flashes Kit

- E250 Flash Head x3
- Barndoor Kit BD-03 x1
- Carrying Bag CB-04 x1
- Light Stand 304 (2m height) x3
- Wireless Radio Trigger RT-16 x1
- Softbox SB-MS (60x60cm) x1
- Umbrella UB-002 (33"black&silver) x1



E300-D

E300 Trio of Studio Flashes Kit

- E300 Flash Head x3
- Barndoor Kit BD-03 x1
- Carrying Bag CB-04 x1
- Light Stand 304 (2m height) x3
- Wireless Radio Trigger RT-16 x1
- Softbox SB-MS (60x60cm) x1
- Umbrella UB-002 (33"black&silver) x1



MS Series



MS200/MS300 (Halogen modeling lamp)
MS200V/MS300V (LED modeling lamp)

It is a lightweight, compact and durable flash series with complete functions. Designed for shooting studio portrait and e-commerce product. This product is suitable for head shot, waist shoot, and certificate photography, as well as product shooting, etc.

Key Features (MS200V/MS300V)

- Built-in Godox 2.4G wireless X system
- Precise output displayed on LCD panel, 50 steps from 1/32 to 1/1 (or 5.0 to 10.0)
- Use optional X2, XT16 or FT-16 trigger to control the flash power ratio, modeling lamp and buzzer, as well as flash triggering
- Compact and lightweight body with Bowens mount to add almost any studio light shapers
- 10W modeling lamp adjusts in 5% to 100% power levels
- Outstanding output stability, no more than 2% shifts when under the same output
- Anti-preflash function enables synchronization with cameras that have a one-preflash firing system
- Auto memory and recovery of adjusted panel settings

Tech Specs

Model	MS200/MS200V	MS300/MS300V
Max Power (WS)	200Ws	300Ws
Guide Number(m ISO 100) (With high effective reflector)	53	58
Color Temperature	MS200/MS300: 5600±200k MS200V/MS300V: 5800±200k	
Operating Voltage	100-120V~50/60Hz or 200-240V~50/60Hz	
Power Output Control	5.0~10.0(1/32~1/1)	
Modeling Lamp (W)	MS200/MS300: Halogen modeling lamp 150W MS200V/MS300V: LED modeling lamp 10W	
Modeling Lamp Level	5%~100%	
Recycle Time	220V(0.1~1.3s)/110V(0.1~1.8s)	
Triggering Method	Sync cord, Test button, Optical triggering, Wireless control port	
Flash Duration	1/2000~1/800s	
Parameters Output from the Sync cord jack	5V	
Parameters Output from the USB Port	5V/200mA (only for Godox receiver)	
Fuse	F5AL 250V	
Dimension	MS200/MS300: Flash diameter 12.6cm, height of flash with handle 12.7cm, length of flash with lamp cover 28.3cm MS200V/MS300V: Flash diameter 12.6cm, height of flash with handle 16.7cm, length of flash with lamp cover 28.3cm	
Net Weight	MS200/MS300: 2.6kg MS200V/MS300V: 1.3kg	

MS200V-F/MS200-F

MS200V/MS200 Dual Studio Flashes Kit

- Flash Head x2
- Light Stand 304 (2m height) x2
- Softbox SB-BW (60x90cm) x2
- Carrying Bag CB-05 x1
- Standard Reflector x1
- Wireless Power-control Flash Trigger XT16 x1



MS300V-F/MS300-F

MS300V/MS300 Dual Studio Flashes Kit

- Flash Head x2
- Light Stand 304 (2m height) x2
- Softbox SB-BW (60x90cm) x2
- Carrying Bag CB-05 x1
- Standard Reflector x1
- Wireless Power-control Flash Trigger XT16 x1



MS200V-D/MS200-D

MS200V/MS200 Trio of Studio Flashes Kit

- Flash Head x3
- Light Stand 304 (2m height) x3
- Softbox SB-BW (60x90cm) x2
- Umbrella UB-002 (40"black&silver) x1
- Carrying Bag CB-04 x1
- Standard Reflector x1
- Wireless Power-control Flash Trigger XT16 x1



MS300V-D/MS300-D

MS300V/MS300 Trio of Studio Flashes Kit

- Flash Head x3
- Light Stand 304 (2m height) x3
- Softbox SB-BW (60x90cm) x2
- Umbrella UB-002 (40"black&silver) x1
- Carrying Bag CB-04 x1
- Standard Reflector x1
- Wireless Power-control Flash Trigger XT16 x1



SK II Series



SK300II/SK400II (Halogen modeling lamp)
SK300IIV/SK400IIV (LED modeling lamp)

It is a lightweight, compact and durable flash with all-round functions. Designed for portrait shooting and e-commerce product shooting.

Key Features (SK300IIV/SK400IIV)

- Built-in Godox 2.4G wireless X system
- Precise output displayed on LCD panel, 40 steps from 1/16 to 1/1 (or 6.0 to 10.0)
- Use optional X1, XT16 or FT-16 trigger to control the flash power ratio, modeling lamp and buzzer, as well as flash triggering
- Compact and lightweight body with Bowens mount to add almost any studio light shapers
- 10W modeling lamp adjusts in 5% to 100% power levels
- Outstanding output stability, no more than 2% shifts when under the same output
- Anti-preflash function enables synchronization with cameras that have a one-preflash firing system
- Auto memory and recovery of adjusted panel settings

Tech Specs

Model	SK300II/SK300IIV	SK400II/SK400IIV
Max Power (Ws)	300Ws	400Ws
Guide Number(m ISO 100)	58	65
Operating Voltage	AC100V-120V~60Hz or AC200V-240V~50Hz	
Power Output Control	OFF:6.0~10.0(1/16~1/1)	
Modeling Lamp (W)	SK300II/SK400II: Halogen modeling lamp 150W	SK300IIV/SK400IIV: LED modeling lamp 10W
Modeling Lamp Level	5%~100%	
LED Modeling Lamp CCT	SK300II/SK400II: 5600K±200K	SK300IIV/SK400IIV: 5700K±200K
Recycle Time	0.1~1.5S	
Triggering Method	Sync cord, Optical triggering, Test button, Wireless control port	
Flash Duration	1/2000~1/800s	
Parameters output from the USB port	5V/200mA (only for Godox receiver)	
Fuse	AC100V-120V~60Hz: 8A AC200V-240V~50Hz: 5A	
Dimension	SK300II:Flash diameter 12.7cm, height of flash with handle 20.6cm, length of flash with lamp cover 34cm	SK400II:Flash diameter 12.7cm, height of flash with handle 23.2cm, length of flash with lamp cover 38cm
	SK300IIV:Flash diameter 13.7cm, height of flash with handle 20.6cm, length of flash with lamp cover 35cm	SK400IIV:Flash diameter 13.7cm,height of flash with handle 23.2cm, length of flash with lamp cover 39cm
Net Weight	SK300II: Approx. 1.9kg SK300IIV: Approx. 2kg	Approx. 2.1kg

SK300IIV-C/SK300II-C
SK300IIV/SK300II Dual Studio Flashes Kit

- Flash Head x2
- Light Stand 304 (2m height) x2
- Softbox SB-BW (60x90cm) x1
- Carrying Bag CB-04 x1
- Standard Reflector x1
- Umbrella UB-002(40"black&silver) x1
- Umbrella UB-004 (40"black&white) x1
- Wireless Power-control Flash Trigger XT16 x1



SK400IIV-C/SK400II-C
SK400IIV/SK400II Dual Studio Flashes Kit

- Flash Head x2
- Light Stand 304 (2m height) x2
- Softbox SB-BW (60x90cm) x1
- Carrying Bag CB-04 x1
- Standard Reflector x1
- Umbrella UB-002(40"black&silver) x1
- Umbrella UB-004 (40"black&white) x1
- Wireless Power-control Flash Trigger XT16 x1



SK300IIV-D/SK300II-D

SK300IIV/SK300II Trio of Studio Flashes Kit

- Flash Head x3
- Light Stand 304(2m height) x3
- Softbox SB-BW (60x90cm) x1
- Carrying Bag CB-06 x1
- Standard Reflector x2
- Umbrella UB-002(40"black&silver) x1
- Umbrella UB-004 (40"black&white) x1
- Wireless Power-control Flash Trigger XT16 x1



SK400IIV-D/SK400II-D

SK400IIV/SK400II Trio of Studio Flashes Kit

- Flash Head x3
- Light Stand 304(2m height) x3
- Softbox SB-BW (60x90cm) x1
- Carrying Bag CB-06 x1
- Standard Reflector x2
- Umbrella UB-002(40"black&silver) x1
- Umbrella UB-004 (40"black&white) x1
- Wireless Power-control Flash Trigger XT16 x1



DS II Series



DS300II/DS400II

DS300II & DS400II studio flash are versatile flashes with solid core and convenience features. These strobe have power that is variable from 1/32 to 1/1 and recycling times from 0.3-1.0 sec. The 150W modeling light is steplessly adjustable. Since the head has a built-in 2.4 GHz wireless receiver, besides triggering the flash, both the power and the modeling light can be adjusted remotely with the separate purchase of the XT16 transmitter. Settings are visible on the flash head's digital readout. The DS300 II has a Bowens front accessory mount that allows it to use not only our Godox modifiers, but also accessories from the many manufacturers that use this popular mount. The DS300 II ships with a standard reflector and a modeling lamp.

Key Features

- Powerful output: maximum 300Ws full power output for DS300II and 40Ws for DS400II
- Short Flash duration from 1/2000-1/800 second and fast recycle time within 1s
- Wireless control: wirelessly power adjusting
- The flash can be controlled and triggered by flash trigger
- Compact and lightweight, easy to store and friendly for carrying
- Designed with Bowens mount offers photographers various of possibilities since it can match with wide range of lighting modifiers.
- In order to maximum free and prompt photographer's shooting

Tech Specs

Model	DS300II	DS400II
Max. Power	300WS	400WS
Guide No. (m ISO 100)	58	
Recycle Time	within 1s	
Color Temperature	5600±200K	
Operation Voltage	AC 200-240V / 50Hz or AC 100-120V / 60Hz	
Power Output Control	OFF, 5.0 - 10.0 (1/32-1/1)	
Modeling Lamp	150W	
Triggering Mode	Sync cord, Slave triggering, Test button, Wireless control port	
Flash Duration	1/2000-1/800 second	
Fuse	AC220V-240V-50Hz:5A / AC110V-120V-60Hz: 8A	

- experience, DSII series equipped with four triggering mode. It's not only can be triggered by flash trigger, but sync cord, test button and wireless control port.
- Stable color temperature with 5600k and can be adjusted within 200K
- Equipped with M/s1 flash mode
- Adjust from 5.0 to 10 in 0.1 increments(1/32-1/1)
- Steplessly adjustable 150w modeling lamp

GS II Series



GS200II/GS300II/GS400II

Godox GSII series flash is a cost-effective choice for photographer to use for both indoor and outdoor. It is not only compact in size, but strongly compatible with accessories. In a word, it is a desirable lighting source for professional photographers to achieve creative lighting effects in various subjects of photography.

Key Features

- Precise output displayed on LCD panel, 50 steps from 1/32 to 1/1 in 0.1 increments
- High-qualified modeling lamp, 150W output and 5% to 100% manual light adjustment
- Outstanding output stability, a tolerance of $\leq 2\%$ under the same output
- Adjusted parameters intelligently remembered after 3s and automatically recovered after a restart

Tech Specs

Model	GS200II	GS300II	GS400II
Max Power (WS)	200WS	300WS	400WS
Guide Number(m ISO 100)	49	58	65
Color Temperature	5600 \pm 200K		
Operating Voltage	AC110V-120V-60Hz or AC220V-240V-50Hz		
Power Output Control	OFF, 5.0-10.0(1/32-1/1)		
Modeling Lamp (W)	150W		
Recycle Time	AC110V-120V-60Hz/0.3-1.5s or AC220V-240V-50Hz/0.3-1s		
Triggering Mode	Sync cord, Test button, Slave triggering, Wireless control port		
Flash Duration	1/2000-1/800s		
Fuse	AC220V-240V-50Hz: 5A/AC110V-120V-60Hz: 8A		
Dimension	Flash diameter 12.5cm, height of flash with handle 25cm, length of flash with lamp cover 35cm		
Net Weight	Approx 1.8KG	Approx 1.9KG	Approx 2KG

GS200II-D
GS200II Studio Flashes Kit

- | | |
|---|----|
| Flash Head | x3 |
| Light Stand 304(2m height) | x3 |
| Softbox SB-BW (70x100cm) | x1 |
| Umbrella UB-004 (40"black&white) | x1 |
| Carrying Bag CB-06 | x1 |
| Standard Reflector | x1 |
| Barndoor Kit BD-04 | x1 |
| Wireless Power-control Flash Trigger XT16 | x1 |



GS300II-D
GS300II Trio of Studio Flashes Kit

- | | |
|---|----|
| GS300II Flash Head | x3 |
| Light Stand 304(2m height) | x3 |
| Softbox SB-BW (70x100cm) | x1 |
| Umbrella UB-004 (40"black&white) | x1 |
| Carrying Bag CB-06 | x1 |
| Standard Reflector | x1 |
| Barndoor Kit BD-04 | x1 |
| Wireless Power-control Flash Trigger XT16 | x1 |



GS400II-D
GS400II Trio of Studio Flashes Kit

- | | |
|---|----|
| GS400II Flash Head | x3 |
| Light Stand 304(2m height) | x3 |
| Softbox SB-BW (70x100cm) | x1 |
| Umbrella UB-004 (40"black&white) | x1 |
| Carrying Bag CB-06 | x1 |
| Standard Reflector | x1 |
| Barndoor Kit BD-04 | x1 |
| Wireless Power-control Flash Trigger XT16 | x1 |



DP III Series



DP400III/DP600III/DP800III/DP1000III
(Halogen modeling lamp)
DP400IIIV/DP600IIIV/DP800IIIV/DP1000IIIV
(LED modeling lamp)

DP IIIV series studio flash provides a functional and durable lighting solution for studio and workshop shooting. It is equipped with a wireless control port so that an optional remote power control and flash triggering system is available. With a solid build, it adopts Bowens-style mount to add various studio light shaping accessories.

Tech Specs

Model	DP400III/ DP400IIIV	DP600III/ DP600IIIV	DP800III/ DP800IIIV	DP1000III/ DP1000IIIV
Max Power (WS)	400Ws	600Ws	800Ws	1000Ws
Guide Number(m ISO 100) (With high effective reflector)	87	106	126	140
Color Temperature	5600±200K			
Operating Voltage	100-240V~50/60Hz			
Power Output Control	OFF, 4.0-10.0(1/64-1/1)			
Modeling Lamp (W)	DP400III/DP600III/DP800III/DP1000III: Halogen modeling lamp 150W DP400IIIV/DP600IIIV/DP800IIIV/DP1000IIIV: LED modeling lamp 30W			
Triggering Method	Sync cord, Test button, receiver triggering, Wireless control port			
Flash Duration	1/2000-1/800s			
Parameters Output from the Sync Cord Jack	5V			
Parameters Output from the USB Port	5V/200mA (only for Godox receiver)			
Fuse	8A			
Recycle Time	0.1-1s			
Dimension	Flash diameter 12.5CM, height of flash with handle 21.5CM length of flash with lamp cover 38CM length of flash with lamp cover 41CM			
Net Weight	2.54kg	2.69kg	3kg	3.14kg

Key Feature

(DP400IIIV/DP600IIIV/DP800IIIV/DP1000IIIV)

- Built-in Godox 2.4G wireless X system
- 1/2000 to 1/800 second short flash duration and fast recycling
- Wireless control of the flash power ratio(needed a receiver), modeling lamp and buzzer, as well as flash triggering
- Anti-preflash function, enabling synchronization with cameras having a one-preflash firing system
- Precise output control, 61 steps from 1/64-1/1
- 30W modeling lamp with adjustable light brightness
- Compatible Bowens mount adds various accessories to give multiple lighting effects
- Adjusted settings are remembered after 3 seconds and recovered after a restart

DP600IIIV-C/DP600IIIV-C
DP600IIIV/DP600IIIV-C Dual Studio
Flashes Kit

- Flash Head x2
- Light Stand 303(2.6m height) x2
- Softbox SB-BW (80x120cm) x1
- Umbrella UB-004 (40"black&white) x1
- Wireless Power-control Flash Trigger Xt16 x1
- Barndoor Kit BD-04 x1
- Carrying Bag CB-01 x1
- Standard Reflector x1



QS II Series



QS400II/QS600II/QS800II/QS1200II

QSII provides a highly cost performance solution to photographers. It possesses almost all the best of QTII flashes with small difference in recycling and flash duration. A wide range of models meet different power output needs and suit for various photography scenarios, such as wedding, portrait, fashion and commercial shooting.

Key Features

- 5600K daylight-balanced flash source with sophisticated core and convenience features.
- The head features 0.3-1.5 sec. recycling with flash durations as short as 1/2000 sec.
- Settings are accessed via rear panel push buttons & displayed on clear LCD screen.
- Triggering options include sync cord, test button, X2, XPro, X1 and XT16 transmitter.
- The head also has an anti-pre-flash function that makes it easy to work with point-and-shoot and other cameras that employ pre-flash.
- QSII has a Bowens front accessory mount allowing it to use Godox modifiers as well as accessories from the many manufacturers that use this system.

Tech Specs

Model	QS400II	QS600II	QS800II	QS1200II
Max Power (Ws)	400Ws	600Ws	800Ws	1200Ws
Guide Number(m ISO 100)	65	76	90	110
Color Temperature	5600±200k			
Operating Voltage	AC200-240V/50Hz or AC100-120V/60Hz			
Power Output Control	OFF,5.0-8.0(1/32-1/1)			
Modeling Lamp (W)	150W			
Recycle Time	0.3-1.5s			
Triggering Method	Sync cord, Test button, Slave triggering, Wireless control port			
Flash Duration	1/2000-1/800s			
Fuse	5A	8A	10A	
Dimension	Flash diameter 14cm, height of flash with handle 26cm,length of flash with lamp cover			
Net Weight	2.75kg	2.91kg	3.9kg	4.3kg

STUDIO FLASH

QS400II/ QS600II/ QS800II/ QS1200II

QS400II-D

QS400II Trio of Studio Flashes Kit

QS400II Flash Head	x3
Light Stand 260T	x3
Standard Reflector	x2
Barndoor Kit BD-04	x1
Carrying Bag CB-06	x1
Carrying Bag CB-03	x1
Softbox SB-BW (80x120cm)	x1
Umbrella UB-004 (40"black&white)	x1
Wireless Power-control Flash Trigger XT16	x1



QS600II-D

QS600II Trio of Studio Flashes Kit

QS600II Flash Head	x3
Light Stand 260T	x3
Standard Reflector	x2
Barndoor Kit BD-04	x1
Carrying Bag CB-06	x1
Carrying Bag CB-03	x1
Softbox SB-BW (80x120cm)	x1
Umbrella UB-004 (40"black&white)	x1
Wireless Power-control Flash Trigger XT16	x1



STUDIO FLASH

QT400IIM/ QT600IIM/ QT1200IIM

QTII^M Quicker HSS Flash



QT400IIM/QT600IIM/QT1200IIM

QTII series high-speed flash has a comprehensive upgrade from advanced technique and abundant functions compare with the first generation. With built-in Godox 2.4G wireless X system to offer convenient wireless control and high-speed flash to capture the wonderful moment, QTII series is excellent for wedding, advertisement, portrait, fashion and high-speed photography.

Key Features

- 5600K daylight-balanced flash source
- Fast recycling as well as short flash durations
- The QTII offers power that's variable from 1/128 to full power, with variable 150W modeling light's output.
- Settings are accessed via rear panel push buttons and displayed on the easy-to-read LCD screen.
- The head has several flash modes for performance options. Ideal for most shooting situations, Stable Color Mode prioritizes precise 5600K color rendition.
- The QTII also supports High-Speed Sync enabling the use of shutter speeds as short as 1/8000 sec allowing you to use wider apertures and other creative effects.

Tech Specs

Model	QT1200IIM	QT600IIM	QT400IIM
Flash Mode	M/Multi/Hss(high-speed sync)		
Guide Number in 1/1	102	76	76
full power (m ISO 100,using standard reflector)			
POWER	1200wS	600ws	400ws
Recycle Time	M 0.05-0.9s	0.05-0.9s	0.05-0.7s
Output Level	Hss 1/128~1/1		
	Multi 1/16~1/1		
	1/128~1/8		
Multi Flash	Yes (max.flash time:99, max.flash frequency:30)		
Sync Mode	High-speed sync (up to 1/8000s), first curtain sync, second curtain sync		
Delay Flash	0.01~30s		
MASK Function	√		
Fan	√		
Beeper	√		
Modeling lamp	150W		
Display Flash Duration	√		
Radio (2.4G) Transmission (X system)			
Wireless Function	Slave unit, ON/OFF		
Controllable Slave Units	16 groups:0~9,A,B,C, D,E,F		
Transmission Range (approx.)	50m		
Channel	32:1~32		
Sync Triggering Mode	6.35mm sync cord jack, wireless control port, built-in		
	2.4G wireless transmission		
Net Weight	4.26Kg		



QT400IIIM / 600IIIM / 1200IIIM

Quicker Studio Flash

QT400IIIM/QT600IIIM/QT1200IIIM

The new QT III is a breathtaking evolution of Quicker series. With all-round upgrades, it has better performance in modeling light, HSS and other key features, giving full play to the photographers' creative potentials and adding more efficiency in the fast-paced production.



Key Features

- Short flash duration up to 1/29600s(t=0.1, QT400IIIM)
- Fast recycling time of 0.01-0.9s
- Multi-flash mode to create images of movement
- High speed sync with the shutter speed up to 1/8000s enables production with large apertures and other creative effects
- Stable color temperature mode satisfies high requirement on color accuracy
- More powerful and energy-saving 30W LED modeling light adjustable from 0-100%
- Adjustable output from 1/256 to 1/1
- Built-in 2.4G wireless system for wireless control within 50m
- Compatible with various Bowens-mount modifiers

Tech Specs

Model	QT400IIIM	QT600IIIM	QT1200IIIM
Flash Mode	M/Multi/Hss(high-speed sync)		
Guide Number in 1/1 full power (m ISO 100, using highlight or standard reflector)	65	76	105
Input Parameter	100-240v~50/60Hz 8.0A		
Flash Duration (t0.1)	High-Speed Flash 1/670s-	1/530s-	1/300s-
High-Speed Flash (speed) Mode	1/29600s	1/26100s	1/23400s
Stable Color	1/670s-	1/530s-	1/300s-
Temperature Mode	1/6700s	1/6010s	1/6090s
Color	Stable Color	5600±200K	
Temperature	Temperature Mode	High-Speed Flash 5400K-9500K	
	(speed) Mode	High-Speed Sync 4600K-5000K	
	Flash(speed) Mode		
Power	400Ws	600Ws	1200Ws
Recycle Time	Approx.0.01-0.9s		
Output Level M	M	1/1-1/256	
	Hss	1/1-1/32	
	Multi	1/4-1/256	
Multi Flash	Yes (max. flash time:99; max. flash frequency: 30)		
Sync Mode	High-speed sync (up to 1/8000s), first curtain sync,second curtain sync		
Delay Flash	0.01-30s		
MASK Function	√		
Fan	√		
Beeper	√		
LED Modeling Lamp	40w		
Brightness Adjustment Range of Modeling Lamp	1%-100%		
Receiver Model	s1/s2		
Display Flash Duration	√		
Display	High qualified LCD panel		
Radio (2.4G) Transmission (x system)			
Wireless Function	Receiver unit,ON/OFF		
Controllable Receiver units	16 groups: 0-9 ,AB,C,D,E,F		
Transmission Range (approx.)	50m		
Channel	32:1-32		
ID	01-99		
Sync Triggering Mode	Built-in 2.4G wireless transmission		
Working Environment Temperature	-10°C-50°C		
Dimension	392*176*	392*176*	550*176*
	143mm	143mm	143mm
Net Weight	2.96kg	3.33kg	4.26kg



QT400IIIM-C/QT400IIM-C

QT400IIIM/QT400IIM Dual Studio Flashes Kit

Flash Head	x2
Light Stand 260T	x2
Softbox SB-BW (80x120cm)	x1
Umbrella UB-004 (40"black&white)	x1
Wireless Power-control Flash Trigger XT16	x1
Carrying Bag CB-06	x1
Carrying Bag CB-03	x1
Standard Reflector	x1



QT600IIIM-C/QT600IIM-C

QT600IIIM/QT600IIM Dual Studio Flashes Kit

Flash Head	x2
Light Stand 260T	x2
Softbox SB-BW (80x120cm)	x1
Umbrella UB-004 (40"black&white)	x1
Wireless Power-control Flash Trigger XT16	x1
Carrying Bag CB-06	x1
Carrying Bag CB-03	x1
Standard Reflector	x1



QT400IIIM-D/QT400IIM-D

QT400IIIM/QT400IIM Trio of Studio Flashes Kit

Flash Head	x3
Light Stand 260T	x3
Softbox SB-BW (80x120cm)	x1
Umbrella UB-004 (40"black&white)	x1
Barndoor Kit BD-04	x1
Wireless Power-control Flash Trigger XT16	x1
Carrying Bag CB-06	x1
Carrying Bag CB-03	x1
Standard Reflector	x1



QT600IIIM-D/QT600IIM-D

QT400IIIM/QT400IIM Trio of Studio Flashes Kit

Flash Head	x3
Light Stand 260T	x3
Softbox SB-BW (80x120cm)	x1
Umbrella UB-004 (40"black&white)	x1
Barndoor Kit BD-04	x1
Wireless Power-control Flash Trigger XT16	x1
Carrying Bag CB-06	x1
Carrying Bag CB-03	x1
Standard Reflector	x1





POWER INVERTER

Photo by Sarah Edmunds

LP750X



LP750X

This power inverter series is specially designed portable AC power for advanced flash devices. It provides ideal power supply solutions for location photo shooting and indoor emergency power use. With multiple AC sockets, multiple lights and also other devices such as laptops or wind machines can definitely rely on it. It has two operating modes: normal mode & flash mode. In normal mode, the unit detects that connected devices are not drawing power and then enters into standby state to save power. The flash mode is specially designed based on the flash power supply circuit. Portable Power Inverter LP750X offers perfect outdoor AC power supply and indoor emergency supply with reliable and easy operation.

Key Features

- Strong power and easy operation
- 2 USB port for charging
- Support both indoor and outdoor shooting
- Safe and reliable with multiple protective function
- Lightweight and portable
- Powerful battery: battery capacity up to 15000mAh and able to support all the shooting scenarios that photographers demand
- Built-in cooking fan: protect LP750X from overheat
- Conversion efficiency as high as 95% and allows devices to run cleaner and cooler

Accessories



EC750
External Power Source Connector

Tech Specs

Model	LP750X
Continuous Output	750W
Peak Power	1400W
Input Voltage Range	DC 10.8V-13.2V
Output Voltage/Frequency	AC 220V-240V/50Hz
Output Waveform	Pure Sine wave
High Harmonic Distortion	< 3%
No-load Current Consumption	Normal mode: 0.24A Flash mode: 0.95A
Conversion Efficiency	95%
Low-voltage Alarm	Yes
Low-voltage Shutdown	Yes
Working Temperature Range	-10°C - 40°C
Operating Temperature Range	0-40°C
Battery Type	Lithium-iron ferrous phosphate battery
Nominal Capacity of the Battery	15000mAh(12.8V)
Charging Period	About 3.5h (standard 5A charger)
Fuse	3*30A
Size	172*178*293mm
Weight	approx. 6.96kg



The LP750X can provide portable AC power to office equipment, household equipment, camping gear, outdoor parties, computers, and photographic equipment.

MONOLIGHT

Photo by Volodya Voronin

AD100Pro



AD100Pro

A new addition to Godox AD family , Pocket Flash AD100PRO, inherits the advantage of Godox AD series and great compatibility with Godox radio system. It is extremely compact and lightweight, relieving the burden of photographers when shooting on location. The new 100Ws strobe fills the gap of photographers' demand for an off-camera strobe at this power level. You'll also benefit from this flash with its wide range of light shapers, aspiring more possibilities in your creative photography journey

Key Features

- Incredibly small: with just 524 gram include battery, you can throw it into your pocket pr bag, making your photography journey a breeze
- Expanded versatility:dedicate designed round and magnetic flash head delivers a natural circular flash spread, and suitable for Godox AK-R1 accessories kit. With S2 bracket, AD100Pro can work with various Bowens mount modifiers
- Wireless freedom: built-in Godox 2.4G system enables AD100Pro triggered by flash trigger X1,X2 and XPro
- Powerful battery:massive 2600mAh battery gives up to 360 full-power on a charge
- Firmly attached: there are two slots underneath the flash AD100PRO for photographers to adjust the position of flash

Tech Specs

Model	AD100Pro	
Wireless Receiver Unit Mode	Radio transmission mode (compatible with Nikon & Canon & Sony& Fujifilm & Olympus & Panasonic & Pentax)	
Flash Mode	Wireless off	M/Multi
	Receiver unit of radio transmission	TTL/M/Multi
Power Output	9 steps: 1/256~1/1	
Stroboscopic Flash	Provided (up to 90 times, 99Hz)	
Flash Exposure Compensation (FEC)	Adjust the parameters in the 2.4G remote control	
Sync mode	High-speed sync (up to 1/8000 seconds), first-curtain sync, and second-curtain sync	
Delay Flash	0.01~30 seconds	
Modeling Lamp (LED)	1.8W: Light brightness: 1 to 10 levels	
Optic Receiver Flash	S1/S2	
Wireless Flash (2.4G transmission)		
Wireless flash function	Receiver, Off	
Controllable Receiver groups	5 (A, B, C, D, and E)	
Transmission range(approx.)	100m	
Channels	32 (1~32)	
ID	01~99	
Power Supply		
Power Supply	Lithium battery pack (7.2V/2600mAh compatible with V1)	
Full Power Flashes	Approx. 360	
Recycle Time	Approx. 0.01-1.5s	
Power Indication	Power off automatically after approx. 30 minutes of idle operation.	
Sync Triggering Mode	3.5mm sync cable, Wireless control port	
Color Temperature	5800±200k	
Dimension		
Size	120*76*76 mm	

Accessories

AK-R1

Accessory Kit for round flash head contains magnetically-attached modifiers that maximize the capabilities of the head. It contains a snoot, four-way barndoors, and a honeycomb grid, a dome, a filter set included.



FG-100

Flash Grip is a rugged and portable grip compatible with Godox AD100pro, AD200pro, AD300pro , it extends flexibility to extreme. Ergonomic design eases your wrist in a long-time shooting. Mounted on the 15° tilted upper surface, the light can illuminate downwards naturally, which avoids strain or even injury caused by bending your wrist down constantly.



S2

bracket supports to expand versatility of AD100Pro. With using S2 bracket, AD100Pro can work with various Bowens mount modifiers such as snoot, reflector, beauty dish, softbox and photography umbrella to achieve all light effects that you need.



AD100Pro K2
AD100Pro Dual Lights Backpack Kit

AD100pro Pocket Flash	x2
Battery	x2
Charger	x2
AD-E2 Bracket	x2
USB Cable	x2
S2 bracket	x1
CB-20 backpack	x1
AK-R1 Accessories Kit	x1
UBL-085T Umbrella with black diffuser cover	x1
UBL-085S Umbrella with transparent diffuser cover	x1



AD100Pro K3
AD100Pro Trio Lights Backpack Kit

AD100pro Pocket Flash	x3
Battery	x3
Charger	x3
AD-E2 Bracket	x3
USB Cable	x3
S2 bracket	x1
CB-20 backpack	x1
AK-R1 Accessories Kit	x1
UBL-085T Umbrella with black diffuser cover	x1
UBL-085S Umbrella with transparent diffuser cover	x1



AD200Pro



AD200Pro

AD200Pro pocket flash has strong power with lightweight and great portability. Easily packed into your pocket. With professional lithium pack and two different flash head offer diverse light effects. AD200Pro added a stable color temperature to be changed within 100K over the entire power range when its in stable color temperature mode.

Key Features

- Incredibly small: with just 524 gram include battery, you can throw it into your pocket pr bag, making your photography journey a breeze
- Expanded versatility:dedicate designed round and magnetic flash head delivers a natural circular flash spread, and suitable for Godox AK-R1 accessories kit. With S2 bracket, AD200Pro can work with various Bowens mount modifiers
- Wireless freedom: built-in Godox 2.4G system enables AD200Pro triggered by flash trigger X1,X2 and XPro
- Powerful battery:massive 2600mAh battery gives up to 360 full-power on a charge
- Firmly attached: there are two slots underneath the flash AD200PRO for photographers to adjust the position of flash

Tech Specs

Model	AD200Pro	
Wireless Receiver Unit Mode	Radio transmission mode (compatible with Nikon & Canon & Sony& Fujifilm & Olympus & Panasonic & Pentax)	
Flash Mode	Wireless off	M/Multi
	Receiver unit of radio transmission TTL/M/Multi	
Power Output	9 steps: 1/256~1/1	
Stroboscopic Flash	Provided (up to 90 times, 99Hz)	
Flash Exposure Compensation (FEC)	Adjust the parameters in the 2.4G remote control	
Sync mode	High-speed sync (up to 1/8000 seconds), first-curtain sync, and second-curtain sync	
Delay Flash	0.01~30 seconds	
Modeling Lamp (LED)	1.8W: Light brightness: 1 to 10 levels	
Optic Receiver Flash	S1/S2	
Wireless Flash (2.4G transmission)		
Wireless flash function	Receiver, Off	
Controllable Receiver groups	5 (A, B, C, D, and E)	
Transmission range(approx.)	100m	
Channels	32 (1~32)	
ID	01~99	
Power Supply		
Power Supply	Lithium battery pack (7.2V/2600mAh compatible with V1)	
Full Power Flashes	Approx. 360	
Recycle Time	Approx. 0.01-1.5s	
Power Indication	Power off automatically after approx. 30 minutes of idle operation.	
Sync Triggering Mode	3.5mm sync cable, Wireless control port	
Color Temperature	5800±200k	
Dimension		
Size	120*76*76 mm	

Flash Head



H200R Round Flash Head



H200 Fresnel Head



Flash Head H200J Bare Bulb



AD-L LED Head



EC200 Extension Head



R200 Ring Flash Head

Accessories



AK-R1 Accessories Kit Compatible with flash head H200R



BD-07 Barndoor Kit Compatible with flash head H200



AD-S15 Protection Cap Compatible with flash head H200J



AD-S3 Beauty Dish Kit Compatible with flash head H200J



AD-S7 Multifunctional Softbox Compatible with flash head H200J



AD-S9 Snoot with Grid Compatible with flash head H200J



AD-S11 Color Gel Pack & reflector Grid Compatible with flash head H200J



AD-S18 Reflective Slice Compatible with flash head H200J



AD-S17 Wide Angle Diffuser Compatible with flash head H200J

R200 Ring Flash

The R200 ring flash is another light head system for AD200/AD200Pro. As a 200Ws ring flash like never had before, the R200 renders incredible even illumination while eliminating unpleasant highlights and creating a glamorous glow on your subject that will make the portrait look expensive and impressive, making it an irreplaceable light source for photography.



Accessories



R200-CF
Color filter set



CB56
Carry bag for AD200Pro Light Head System



CB57
Mini bag for AD200Pro (Included)



FLB-01
Foldable camera bracket (Included)
Compatible with flash head R200



UBB-01
Umbrella bracket (Included)
Compatible with flash head R200



RFT-25S
Reflector
Compatible with flash head R200



R200-RHC20
20° Honeycomb grid for R200 Reflector
Compatible with flash head R200



R200-RHC30
30° Honeycomb grid for R200 Reflector
Compatible with flash head R200



R200-RHC40
40° Honeycomb grid for R200 Reflector
Compatible with flash head R200



R200-HC20
20° Honeycomb grid for R200 flash head
Compatible with flash head R200



R200-HC30
30° Honeycomb grid for R200 flash head
Compatible with flash head R200



R200-HC40
40° Honeycomb grid for R200 flash head
Compatible with flash head R200

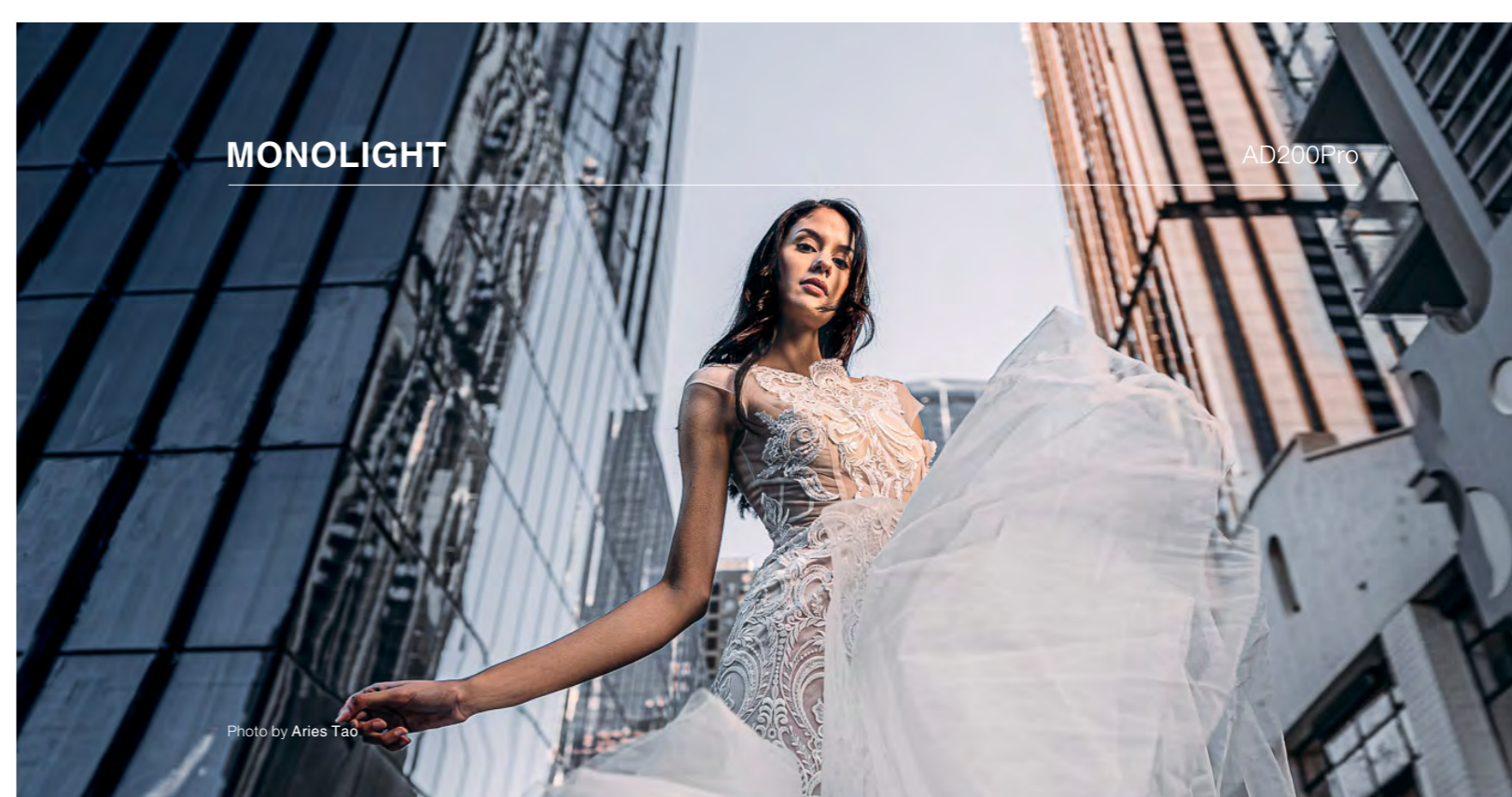


Photo by Aries Tao



AD-B2
Dual Power Flash Bracket for AD200Pro
Enable to mount two AD200Pro together to double the flash power.



S1/S2
S-type Bracket
Using S2 bracket, AD200Pro can work with various Bowens mount modifiers such as snoot, reflector, beauty dish, softbox to achieve all light effects



FG-100
Flash Grip
A rugged and portable grip for AD200pro features a 15° tilted upper surface, anti-skid grooves, and user-friendly design.



MT-01
Mini Stand
A tabletop mini stand that allows adjustments and locking of flash or camera with a single push button.



AD-E2
Flash Holder
Metal flash holder can steplessly adjust angles, having umbrella mount for holding umbrella, with positioning holes to install flash body firmly, and a quick locking knob.



AD200PRO-PC
Silicone Fender
This silicon fender case provides an extra layer of sound and sturdy protection for your AD200PRO, keeping it safe from accidental smash or collision in shooting, featuring absorbing impacts, avoiding extrusion, and works as a free floor light holder.

AD300Pro



AD300Pro

With strong power, all-in-one large capacity battery and round flash head, AD300Pro can offer studio-level soft and even light effects. Fully support of TTL functions of multiple camera brands and various of accessories by changing different adapters

Key Features

- Powerful: 300Ws strong power and 12W LED modeling lamp
- Excellent battery capacity: equipped with rechargable lithium battery, AD300Pro can achieve 320 full power output
- Unlimited Flexibility: from 3000K-6000K color temperature can be freely adjusted
- Wireless control: built-in 2.4G wireless X system and full support TTL function of major camera brands
- Versatility: fit with all kinds of Godox-mount light modifiers. After install AD-AB adapter, AD300PRO can be applied with various mount modifiers
- Zoomable: with using S2 bracket, AD300Pro not only can get zoom function, but suit for all Bowens mount light shaping tools

Tech Specs

Model	AD300Pro	
Wireless Slave Unit Mode	Radio transmission mode (compatible with Nikon& Canon & Sony& Fujifilm & Olympus & Panasonic & Pentax)	
Flash Mode	Wireless off	M/Multi
	secondary unit of radio transmission	TTL/M/Multi
Flash Duration T.01	1/220 to 1/10200 seconds	
Power Output	300Ws, 9 steps: 1/256~1/1	
Stroboscopic Flash	Provided (up to 90 times, 99Hz)	
Sync mode	High-speed sync (up to 1/8000 seconds), first-curtain sync, and second-curtain sync	
Delay Flash	0.01-30 seconds	
Modeling Lamp (LED)	12W; Color temperature: 3000-6000K±500K; Light brightness: 1 to 10 levels	
Optic other Flashes	S1/S2	
Wireless Flash (2.4G transmission)		
Controllable Slave groups	5 (A, B, C, D, and E)	
Transmission range	100m	
Channels/ID	32 (1-32) / 01-99	
Power Supply	Lithium battery pack (14.4V/2600mAh)	
Full Power Flashes	Approx. 320	
Recycle Time	Approx. 0.01-1.5s	
Power Indication	Power standby automatically after approx. 30 minutes of idle operation.	
Sync Triggering Mode	3.5mm sync line, Wireless control port	
Color Temperature	5600±200k	
Stable Color Temperature	Change within ±100K over the entire power range in color temperature mode.	
Dimension		
Size	190x100x90mm	

Accessories

In order to support photographers perform well, AD300Pro presents all lighting possibilities with using different light shaping tool under different mount

• Godox mount accessories



• S2 bracket for Bowens mount accessories and zooming



• AD-AB adapter ring support to install modifiers with various mount



AD300Pro Kit
AD300Pro Dual Flashes Backpack Kit

AD300Pro Light	x2
Battery Charger	x2
Battery	x2
Wall Plug	x2
CB20 Backpack	x1
AD-S60S Softbox with Diffusers and Grids	x1
UBL-085T Umbrella with Black Diffuser Cover	x1
UBL-085S Umbrella with Transparent Diffuser Cover	x1



AD-K1
AD300Pro & AD100Pro Three-light Kit

AD300Pro Light	x1
AD100Pro Light	x2
AK-R1 Accessories Kit	x1
Light Stand 213B	x3
CB17 Wheeled Case	x1
Softbox AD-S60S	x1
Umbrella UBL-85S with transparent diffuser cover	x1



AD400Pro



AD400Pro

AD400Pro all-in-one outdoor flash is a versatile tool compatible with several TTL systems including Canon, Sony, Nikon, Fujifilm, Olympus and Panasonic options. It offers up to 400Ws with nine steps of power output. It features a high-speed sync mode that works with shutter speeds and great flash duration. Another unique setting is its Stable Color Temperature Mode, which tightly controls color to keep temperature changes within 75K across the entire power range. Despite these characteristics, it manages to keep recycling times low to capture peak action and every fleeting gesture.

Key Features

Built-in Godox 2.4G Wireless X System with Great Compatibility

- With built-in Godox 2.4G wireless X system, AD400Pro is compatible with multiple TTL autoflash system. Support for 1/8000s high-speed sync.

Supports to Install Different Kinds of Accessories by Replacing Its Adapter Ring

- With specially designed New Godox-mount to install lighter and more portable accessories which can be used in combination.
- Provided with a Bowens-mount adapter ring to install Bowens-mount accessories.
- Purchase adapter rings of other brands to replace more accessories e.g. Broncolor, Profoto, Elinchrom, etc.

Two Power Supply Methods with Great Flexibility

- Professional lithium battery pack (21.6V/2600mAh).

Tech Specs

Model	AD400Pro
Wireless secondary Unit Mode	Radio transmission mode (compatible with Canon E-TTL II, Nikon i-TTL, Sony, Olympus, Panasonic and FUJIFILM).
Flash Mode	Wireless off M/Multi Slave unit of radio transmission TTL/M/Multi
Guide No. (m ISO 200)	72 (m ISO 100, with high-efficiency standard reflector)
Flash Duration	1/230 to 1/12340 seconds (T0.1)
POWER	400Ws
Power Output	9 steps: 1/256~1/1
Stroboscopic Flash	Provided (up to 100 times, 100Hz)
FEC	Manual, Feb: ±3 stops in 1/3 stop increments.
Sync mode	High-speed sync (up to 1/8000 seconds), first-curtain sync, and second-curtain sync
Delay Flash	0.01~30 Seconds
Modeling Lamp (LED)	30W/4800K/TLIC: 93
Optical Slave Flash	S1/S2
Wireless Flash (2.4G wireless transmission)	
Wireless Flash Function	Slave, Off
Controllable Slave Groups	5 (A, B, C, D, E)
Transmission Range (approx.)	100m
Channels	32 (1~32)
Power Supply	
Power Supply	Lithium battery pack (21.6V/2600mAh)
Full Power Flashes	380
Recycle Time	Approx. 0.01-1s
Power Indication	Power off automatically after approx. 30~120 minutes of idle operation.
Sync Triggering Mode	3.5mm sync line
Color Temperature	5600±200K
Dimension (with battery)	220x102x128 mm (flash tube & reflector not included)
Net Weight (with battery)	2.1 Kg (flash tube & reflector not included)

Accessories

AD400Pro designed with Godox mount and can be installed with light and more portable accessories in combination

Mount Adapter rings of brands like Bowens, Profoto, Elinchrom and Broncolor to fits different accessories from these brands.



SN04 Snoot



BD-10 Barndoor Kit



Profoto Mount Adapter



AD-R12 Long Focus Reflector



BD-10 Barndoor Kit



Elinchrom Mount Adapter



AD-S65/AD-S85 Softbox



Broncolor Mount Adapter



Adopt AC400 AC Power source to achieve AC-DC dual-purpose



AD-AB Adapter Ring



AD600B/AD600BM



AD600B/AD600BM

AD600B and AD600BM TTL All-in-one outdoor flash is powerful and portable with professional lithium battery pack. They are supports with main camera brands and compatible with multi functions.

Key Features

Built-in Godox 2.4G Wireless X System

- AD600B is compatible with Canon E-TTL II autofocus, Nikon i-TTL autofocus, etc.

Strong Power and Abundant Functions

- AD600B/AD600BM has 600Ws and GN87 (m ISO 100, with AD-R7 standard reflector). Stable color temperature at 5600±200K over the entire power range. 25 steps of power adjustment (1/1 to 1/256) offer better lights effects.

Professional Lithium Battery Pack with Great Flexibility

- Professional lithium battery pack has large capacity (11.1V/8700mAh) to provide 500 full power flashes and recycle in 0.01-2.5 second.

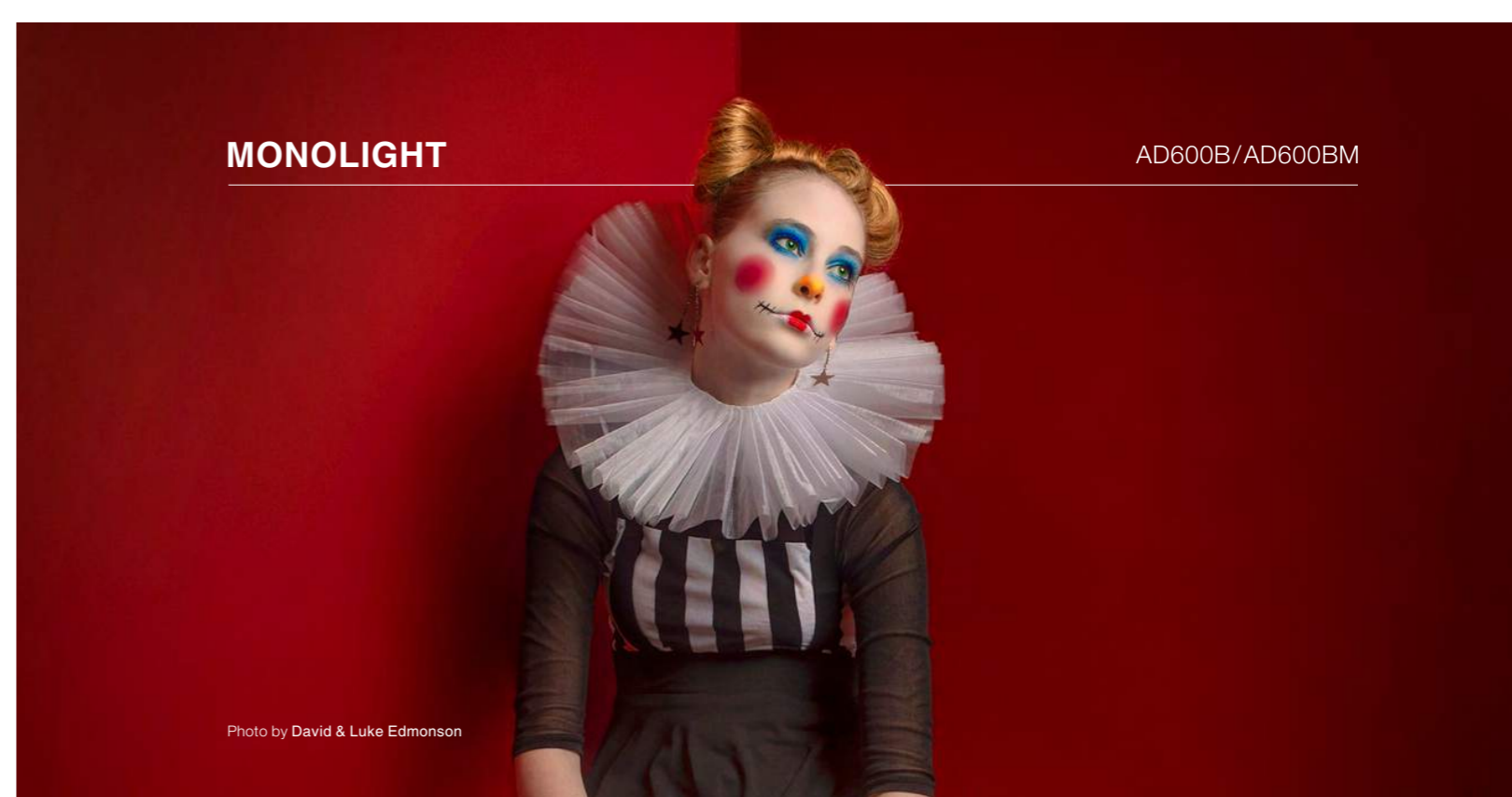
Purchase a H600 portable flash head (sold separately) to fire flashes with great convenience.

Exquisite Details and Good Quality

- LED modeling lamp can adjust light brightness in three steps. Large and clear dot-matrix LCD panel offers convenient operation. 10W LED modelong lamp can adjust light brightness in three steps. USB firmware upgrades helps keep pace with the latest technology. With handle to adjust different shooting directions of the flash.

Tech Specs

Model	AD600B	AD600BM
Wireless Slave Unit Mode	*Rdio transmission mode (compatible with Nikon & Canon) *Optical transmission mode	
Flash Mode	Wireless off Slave unit of radio transmission	M/Multi M/Multi
Guide No. (m ISO 100)	Slave unit of optical transmission TTL/M/Multi	
Flash Duration	87 (m ISO 100, with AD-R7 standard reflector)	
POWER	1/220 to 1/10000 seconds (T0.1)	
Power Output	600W	
Stroboscopic Flash	9 steps: 1/256-1/1	
FEC	Manual. FEB: ±3 stops in 1/3 stop increments.	/
Sync mode	High-speed sync (up to 1/8000 seconds), first-curtain sync and second-curtain sync	
Delay Flash	0.01-30 seconds	
Modeling Lamp (LED)	10W	
Optical Slave Flash	S1/S2	
Wireless Flash (2.4G wireless transmission)		
Transmission	Optical Indoors: 12 to 15 m / 39.4 to 49.2 ft.	/
Range (approx.)	Outdoors: 8 to 10 m / 26.2 to 32.8 ft.	
	2.4G 80m	
	Optical 4 (1, 2, 3, and 4)	/
Channels	2.4G 32(1-32)	
Power Supply		
Power Supply	Lithium battery pack (11.1V/8700mAh)	
Full Power Flashes	500	
Recycle Time	Approx. 0.01-2.5s	
Color Temperature	5600±200k	
Dimension (with battery)	220*245*125mm (flash tube & reflector not included)	
Net Weight (with battery)	2.66Kg (flash tube & reflector not included)	



Accessories

• H600

Portable flash head H600 offers a great convenience for photographers to fire their flashes.



• AC and DC power supply

AD-AC power enable AD600B/600BM to be used with both AC and DC power supply which gives photographers much more freedom and possibilities on creative.



• H1200

H1200 flash head can support both AD600B/AD600BM at the same time and achieve 1200W power output.



AD600Pro



AD600Pro

AD600Pro All-in-One Outdoor Flash has 600Ws strong power, 0.01~0.9s recycle time, 12 continuous flashes in 1/16 power output, 38W LED modeling lamp, 360 full power pops, stable color temperature

Key Features

Built-in Godox 2.4G Wireless X System

- AD600Pro is compatible with TTL auto flash system of multi brands cameras.

Wireless Remote Control and Triggering

- Godox XPro and X1 series flash trigger are recommended to achieve wireless control.
- There are 3.5mm sync cord jack and wireless control port to achieve multiple triggering methods.

Strong Power and Abundant Functions

- AD600Pro has 600Ws and GN87 (m ISO 100, with AD-R9 reflector).
- Stable color temperature at 5600±100K over the entire power range.
- 25 steps of power adjustment (1/1 to 1/256)

Two Power Supply Methods with Great Flexibility

- Professional lithium battery pack has large capacity to provide 380 full power flashes and recycle in 0.01-0.9 second.
- Adopt AC26 AC power source to achieve AC-DC dual-purpose.

Tech Specs

Model	AD600Pro
Wireless Slave Unit Mode	Radio transmission mode (compatible with Canon E-TTL II, Nikon i-TTL, Sony, Olympus, Panasonic and FUJIFILM).
Flash Mode	Wireless off M/Multi Slave unit of radio transmission TTL/M/Multi
Guide No. (m ISO 100)	87 (m ISO 100, with high-efficiency standard reflector)
Flash Duration	1/220 to 1/10100 seconds (T0.1)
POWER	600Ws
Power Output	9 steps: 1/256~1/1
Stroboscopic Flash	Provided (up to 100 times, 100Hz)
FEC	Manual. Feb: ±3 stops in 1/3 stop increments
Sync mode	High-speed sync (up to 1/8000 seconds), first-curtain sync, and second-curtain sync
Delay Flash	0.01~30 Seconds
Modeling Lamp (LED)	38W/4800K/TLIC: 93
Wireless Flash (2.4G wireless transmission)	
Controllable Slave Groups	5 (A, B, C, D, E)
Transmission Range (approx.)	100m
Channels	32 (1~32)
Power Supply	
Power Supply	Lithium battery pack (28.8V/2600mAh)
Full Power Flashes	360
Recycle Time	Approx. 0.01-0.9s
Power Indication	Power off automatically after approx. 30~120 minutes of idle operation.
Sync Triggering Mode	3.5mm sync line, wireless control port
Color Temperature	5600±200K
Dimension (with battery)	250x245x125mm (flash tube & reflector not included)
Net Weight (with battery)	3Kg (flash tube & reflector not included)



Photo by Volodya Voronin

Accessories

• H600P

The portable flash head supports all popular Bowens S-type mount light modifiers and leave more possibilities for photographers.



• UC46 charger

It can charge the batteries of AD400Pro, AD600 series and Ad600pro outdoor flashes, which offers great portability in outdoor shooting.



AD1200Pro kit

TTL Power Pack



AD1200Pro

Ad1200 kit offers high quality light for outdoor and live shooting with strong power and large capacity lithium battery pack. Large capacity power pack and light flash head offers great portability

Key Features

- Powerful and flexible power pack: 5200mAh large battery capacity and 500 full power output. Besides, there is also a 2600mAh smaller battery for taking on the airplane
- 0.01-2s quick recycling time and stable color temperature mode
- 23.5 sync cord jacks helps to connect several flashes
- Multi-function flash head: Bowens mount match with various light modifiers, good heat dissipation capacity with built-in fan design
- Wireless control: built-in 2.4G X system
- 40W LED modeling lamp and can be adjust brightness steplessly
- 1/8000s high speed sync function

Accessories

Designed for Godox powerful AD1200Pro, Godox most versatile and high-end R1200 and H1200P flash head takes up to 1200Ws strong power, providing even illumination with few shadows visible in the images as the origin of the light is very close to the optical axis of the lens. It produces striking results for portrait, video recording, and especially in close-up shot and macro photography With up to 1200Ws strong power, the R1200 and H1200P flash head can overtake daylight or even overpower the sun. Equipped with 40W modeling light, you can get preview on how the light falls on the subject. Compared to the point light source, the light of R1200 is very close to the optical axis of the lens, creates a glamorous look, making the subject almost free of shadow, popular in portrait and fashion photography. As R1200 uses a circular flash tube, you could also get beautiful catchlights in your model's eyes. H1200P is a lightweight flash head with the Bowens mount allows photographers to attach hundreds of modifiers.

R1200



H1200

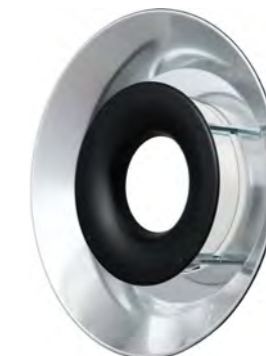


RFT-21 Reflector

Designed for R1200, the RFT-21 Reflector can spread the light out, illuminate a larger area than the ring flash head itself and soften the shadows. Godox offers two dedicated reflectors (white and silver coating). The silver reflector is very reflective and brings more contrast compared with white one which provides extra softness.



RFT-21W(white)



RFT-21S(silver)

Honeycomb series

A dedicated set of three pieces include BD-09A, BD-09B and BD-09C in different angle.



BD-09B (20°)



BD-09A (30°)



BD-09C (40°)

FLB-90

Quick rotating camera bracket



FLB-02

Foldable bracket for R1200



UBB-02

Umbrella bracket for R1200



EC1200

extension cord



WB1200

36V/2600mAh battery



AC1200

AC adapter



Tech Specs

Model	AD1200Pro Kit
Wireless Slave	Radio transmission mode (compatible with
Unit Mode	Canon E-TTL II, Nikon i-TTL, Sony, Olympus, Panasonic and FUJIFILM).
Flash Mode	Wireless off M/Multi
	Slave unit of radio transmission TTL/M/Multi
Guide No. (m ISO 200)	124 (m ISO 100, with high-efficiency standard reflector)
Flash Duration	1/220 to 1/10860 seconds (T0.1)
POWER	1200Ws
Power Output	1/256~1/1
Stroboscopic Flash	Provided (up to 100 times, 100Hz)
Flash Exposure	Adjust the parameters on the flash trigger
Compensation (FEC)	High-speed sync (up to 1/8000 seconds),
Sync mode	first-curtain sync, and second-curtain sync
Delay Flash	0.01~30 Seconds
Mask	✓
Fan	✓
Beeper	✓
Modeling Lamp (LED)	40
Optical Slave Flash	S1/S2
Flash Duration Indication	✓
Display	Dot-matrix panel
Wireless Flash (2.4G wireless transmission)	
Wireless Flash Function	Slave, Off
Controllable Slave Groups	5 (A, B, C, D, E)
Transmission Range (approx.)	100m
Channels	32 (1~32)
Wireless ID	To avoid signal interference effectively, triggering can only be achieved when the channels and wireless IDs of the master and slave unit are set to the same.

Power Supply	
Power Supply	Lithium battery pack (36V/5200mAh)
Full Power Flashes	500
Recycle Time	Approx. 0.01-2s
Battery Indicator	✓
Power Indication	Power off automatically after approx. 30~120minutes of idle operation.
Sync Triggering Mode	3.5mm sync line
Color Temperature	5600±200K
Stable Color Temperature	Changes within ±75K in entire power range
Dimensions	
Dimension	Flash Head: 12.5*23*20cm
	Power Pack: 23.5*14.5*26cm
Net Weight	8.25 kg

Tech Specs

Model	R1200
Power Consumption	1200Ws
Guide No. (1/1 output)	53
	(with RFT-21 Reflector)
100% Light Brightness(lux)(=)	7500
Working Temperature	-10°C~40°C
Modeling Lamp (LED)	4300K±200K; 40W
Color Temperature	5800K±200K
Dimension	205x205x80mm
Net Weight	1.76Kg

AR400



AR400

As a valuable product in Wistro series, powerful ring flash AR400 offers shadow-free illumination and even light effects with strong power and portable lighting body. The brand new lithium battery unibody design gives you better light experience.

Key Features

- Shadow-free Illumination**
 - AR400 adopts annular flash head to provide constant illumination for even & shadow-free lighting.
- Multiple Functions**
 - AR 400 can be used as ring flash and LED light as well.
- Professional Battery Pack**
 - AR400 adopts professional battery pack (11.1V/4500mAh) and 400W high power output to support 0.05-2.8s recycle time.
- Wireless Power Control**
 - AR400 support high-speed sync remote control and can easily to achieve 1/8000s high speed sync.
- Full Range Accessories**
 - With a folding light bracket, AR400 enables to be installed on camera .With an umbrella bracket, AR400 can install different photographic umbrellas for better light effects.
 - With a diffusion cover, AR400 possesses soft illumination and even light resource.
- Lightweight and Convenient**
 - AR400 is easy to be carried since it's only weight 1.KG include battery pack.

Tech Specs

Model	AR400
Battery	AR-B4500 (Li-ion battery 11.1V/4500mAh)
Max Power(Ws)	400Ws
Guide Number(m ISO 100)	36
Full Power Flashes (1/1)	Approx.450 times
M/S1/S2 Mode1	1/128~1/1
RPT Mode	1/128~1/4
High-Speed Sync	1/32~1/1
Recycle Time	0.05~2.8s
Color Temperature	5600K±200K
Flash Duration	1/300s-1/10000s
Triggering Method	Triggering Method3.5mm/PC sync cord jack, Slave triggering, Test button, Wireless control port
100% LED Brightness(LUX)	440 (0.5 m)
Dimension	22.5*23*7cm
Net Weight (with battery)	Approx.1.4kg



CAMERA FLASH





Photo by Aries Tao

CAMERA FLASH

V1

V1 C N S F O P



V1

TTL Li-ion Round Head Flash V1 adopts round flash head to offer studio-level soft and even light effects.

Key Features

Excellent Light Effects & Can be Used On or Off the Camera

- Distributing even light from center to edge, providing natural and beautiful light effect V1 Round flash head's light effect is softer and more even.
- The built-in LED modeling lamp is adjustable from 01 to 10 step.
- 7.2V/2600mAh Battery offers 1.5s recycling time and 480 full power shots.

Wireless Control & Abundant Functions

- Built-in Godox 2.4G wireless X system offers all-in-one function and great compatibility.
- V1C/V1N/V1S/V1F/V1O/V1P is separately suitable for Canon/Nikon/Sony/Fujifilm/Olympus & Panasonic/Pentax series cameras. Fully support TTL auto flash, manual flash, 1/8000s high-speed sync, FEC, second curtain sync, etc.

User-friendly Design

- With magnetic accessory port to swiftly install various of accessories e.g.

AK-R1 accessory kit

- Wide angle adjustment from 0° to 360° horizontally and -7° to 120° vertically.
- With quick lock hot shoe to finish fast installation.
- Support USB firmware upgrade.

CAMERA FLASH | TTL LI-ION ROUND HEAD

V1

Accessories

AK-R1 kit

Support V1 to achieve more light effects when using AK-R1 accessory kit.



S2

Speedlite Bracket



VC26T

Multi Battery Charger for V1 can charge three batteries of V1 simultaneously, which offers great convenience.



Tech Specs

Model	V1C	V1N	V1S	V1F	V1O	V1P
Compatible cameras	Canon EOS cameras	Nikon cameras	Sony cameras	Fujifilm cameras	Olympus& Panasonic Cameras	PENTAX Cameras
	(E-TTL II autoflash)	(i-TTL autoflash)	(TTL autoflash)	(TTL autoflash)	(TTL Autoflash)	(TTL Autoflash)
Power(1/1 output)	76Ws					
Flash Coverage	28 to 105mm · Auto zoom (Flash coverage set automatically to match the lens focal length and image size) · Manual zoom · Swinging/tilting flash head: 0 to 330° horizontally and -7° to 120° vertically					
Flash Duration	1/300 to 1/20000 seconds					
Exposure Control system	E-TTL II autoflash and manual flash	i-TTL autoflash and manual flash	TTL autoflash and manual flash	TTL autoflash and manual flash	TTL autoflash and manual flash	TTL autoflash and manual flash
Flash exposure compensation (FEC)	Manual. FEB: ±3 stops in 1/3 stop increments (Manual FEC and FEB can be combined.)					
FE lock	With <FEL> button or <+> button					
Sync mode	High-speed sync (up to 1/8000 seconds), first-curtain sync, and second-curtain sync					
Multi flash	Provided					
Wireless Flash	Master, Slave, Off					
Master groups	A, B, C, D	M, A, B, C	M, A, B, C	M, A, B, C	M, A, B, C	M, A, B, C
Controllable slave groups	A, B, C, D, E					
Transmission range	100m					
Channels	32 (1-32)					
ID	01-99					
Modeling flash	Fired with camera's depth-of-field preview button					
Auto Focus Assist Beam	Effective range Center: 0.6-10m / 2.0-32.8 feet Periphery: 0.6-5m / 2.0-16.4 feet					
LED Modeling Lamp	Power 2w Color Temperature 3300K±200K					
Power Supply	Power source 7.2V/2600mAh Li-ion battery Recycle time Approx. 1.5 seconds. Green LED indicator will light up when the flash is ready. Full power flashes Approx. 480 Power saving Power off automatically after approx. 90 seconds of idle operation. (60 minutes if set as slave)					
Sync Triggering Mode	Hotshoe, 2.5mm sync line					
Color Temperature	5600±200k					
Dimensions	76*93*197 mm					
Weight without battery	420g					
Weight with battery	530g					

V860^{III} C/N/S/F/O/F

V860III

In the endless pursuit of improving users' shooting experience, Godox is trying to make perfection more perfect. Therefore, the upgraded version of the V860III continues all the features of V860II but is added with functions that will take your shooting efficiency to the next level, making photography a pure enjoyment.

Key Features

Various Flash Modes for Unlimited Creativity

- The V860III continues in TTL, Manual and Multi flash modes. All the functions as HSS (up to 1/8000s), FEC, FEB, rear curtain sync and so on help you to capture every splendid moment quickly, precisely and creatively. The V860III C/N/S/F/O/F models are currently available for Canon, Nikon, Sony, Fuji, Olympus (Panasonic), and Pentax Cameras.

Zoomable Flash Head

- Flash head can be zoomed from 20mm to 200mm automatically or manually, allowing for a convenient adjustment of the light range. Whether shooting in a broad setting or a focused space, the V860III will light the objects naturally.

Flexible Shooting Angle

- With the swivel angle from 0° to 330° horizontally, and from -7° to 120° vertically, the V860III lets you easily complete direct flash, bounce flash, and any other shooting techniques.

Built-in Godox 2.4G Wireless X System

- Built-in with Godox 2.4G wireless X system, the V860III ensures a reliable shooting process with seamless connectivity. When using it off-camera, the V860III is also compatible with Godox X system triggers like X1, X2 and, so on.

Transmitter & Receiver Flash

- Integrating transmitter and receiver in one flash, the V860III gives you the maximum flexibility and convenience to co-work with other flashes.

Better Battery Performance

- Upgraded a new battery with higher capacity (7.2V/2600mAh) offering 1.5s recycle time and 450 full power flashes. The battery is also interchangeable with V1, making your potential pack lighter.

Quick Button for Manual and TTL Function Switch

- Godox V860III has a quick button on the side, able to quickly switch from the manual mode to TTL mode.

Quick Release Lock

- Updated a quick release lock to a quick lever to lock the speedlight into place on your camera's hotshoe.

Modelling Light

- Added a modelling light at the front to aid pre-visualization, and blend with ambient light, with brightness dimmable in 10 levels.

Accessories

S-R1

With Round Head Accessory Adapter S-R1, AK-R1 kit can also be used on Godox camera flashes e.g. V860III, V850II, TT685, TT600 series, etc.



VC26T

Multi Battery Charger for V1 can charge three batteries of V1 simultaneously, which offers great convenience.



S2

Speedlit Bracket



Tech Specs

Model	V860IIIC	V860IIIN	V860IIIS	V860IIIF	V860IIIO	V860IIIP
Compatible cameras	Canon EOS cameras	Nikon cameras	Sony cameras	Fujifilm cameras	Olympus& Panasonic cameras	Olympus& Panasonic cameras
	(E-TTL II autoflash)	(i-TTL autoflash)	(TTL autoflash)	(autoflash)	(TTL autoflash)	(TTL autoflash)
Power(1/1 output)	76Ws					
Flash Coverage	28 to 105mm					
	· Auto zoom (Flash coverage set automatically to match the lens focal length and image size)					
	· Manual zoom · Swinging/tilting flash head: 0 to 330° horizontally and -7° to 120° vertically					
Flash Duration	1/300 to 1/20000 seconds					
Exposure Control						
Exposure control system	E-TTL II autoflash and manual flash	i-TTL autoflash and manual flash	TTL autoflash and manual flash	TTL autoflash and manual flash	TTL autoflash and manual flash	TTL autoflash and manual flash
Flash exposure compensation (FEC)	Manual, FEB: ±3 stops in 1/3 stop increments (Manual FEC and FEB can be combined.)					
FE lock	With <FEL> button or <'> button					
Sync mode	High-speed sync (up to 1/8000 seconds), first-curtain sync, and second-curtain sync					
Multi flash	Provided					
Wireless Flash						
Wireless flash function	Master, Slave, Off					
Master groups	A, B, C, D	M, A, B, C	M, A, B, C	M, A, B, C	M, A, B, C	M, A, B, C
Controllable slave groups	A, B, C, D, E					
Transmission range	100m					
Channels	32 (1-32)					
ID	01-99					
Modeling flash	Fired with camera's depth-of-field preview button					
Auto Focus Assist Beam						
Effective range	Center: 0.6-10m / 2.0-32.8 feet					
	Periphery: 0.6-5m / 2.0-16.4 feet					
LED Modeling Lamp						
Power	2w					
Color Temperature	5200K±200K					
Power Supply						
Power source	7.2V/2600mAh Li-ion battery					
Recycle time	Approx 1.5 seconds. Green LED indicator will light up when the flash is ready.					
Full power flashes	Approx. 450					
	Power off automatically after approx. 90 seconds of idle operation.					
Power saving	(60 minutes if set as slave)					
Sync Triggering Mode	Hotshoe, 2.5mm sync line					
Color Temperature	5600±200K					
Dimensions	195*75*59 mm					
Weight without battery	410g					
Weight with battery	530g					

V850III



V850III

Built-in Godox 2.4G wireless X system, VING Li-ion camera flash V850III provides abundant functions and better performance. Suitable for almost all camera brands, Canon, Nikon, Pentax, Olympus, etc.

Key Features

Powerful & Convenient Li-ion Battery

- Max. 1.7s recycle time & 450 full power pops. Forget the heavy burden and messy battery charging and handling. 2600mAh lithium batteries ensures better shooting experience.

Built-in Godox 2.4G Wireless X System

- Built-in Godox 2.4G wireless X system, V850III is compatible with V1, V860III, V350, TT685, TT350, XPro, X2, X1, etc.

Wireless Triggering

- Utilizing Godox 2.4G wireless X system, V850III can be triggered and controlled by X1C/X1N, X2T-C/X2T-N, XProC/XProN transmitter (sold separately). V850III can achieve 1/8000s high-speed sync functions when using in combination with high-speed triggers e.g. X1C/X1N, X2TC/X2T-N, XProC/XProN.

More Functions

- GN60 (m ISO 100@200mm) and 22 steps of power output (1/1-1/128). Support M/Multi/S1/S2. Auto/Manual zoom head from 20 to 200mm. Support USB firmware upgrade.

Convenient LCD Panel

- With high-resolution LCD panel to offer clear and easy operation. Turn the select dial to choose the amount of the settings.
- Swinging/tilting flash head (bounce flash): 0 to 330° horizontally and -7° to 120° vertically

Tech Specs

Model	V850III
Power Consumption	76Ws
Flash Coverage	20 to 200mm manual zoom
Flash Duration	1/300 to 1/20000 seconds
Wireless flash function	Transmitter, Receiver, Off
Transmitter groups	A,B,C,D
Transmission range (approx.)	100m
Channels	32 (1-32)
ID	01-99
Modeling flash	Fired with camera's depth-of-field preview button
LED Modeling Lamp Power	2W
Color Temperature	5300K±200K
Power Source	7.2V/2600mAh Li-ion battery
Recycle Time	Approx. 1.5 seconds.
Full Power Flashes	Approx. 450
Dimensions (W x H x D)	199*71.5*60 mm
Weight without battery/with battery	390g/500g



V350 C N S F O



V350

Godox VING TTL Li-ion Camera Flash 350C / V350N / V350S / V350F / V350O respectively applies to Canon, Nikon, Sony, Fuji and Olympus & Panasonic cameras. With this flash, your shooting will become simpler.

Key Features

Built-in Godox 2.4G Wireless X System

- With a compact body and max. 50-meter 2.4G wireless transmission distance.

Professional and Rechargeable Battery

- Built-in li-ion battery (7.2V/2000mAh) offers 0.1s-1.7s recycle time and over 500 full power flashes.

Choose Godox TTL flash trigger Xpro series to achieve more functions

- With built-in 2.4G wireless transmission, XPro series can be used to trigger camera flash, studio flash and camera shutter.
- Support for TTL autoflash, manual flash, multi flash, 1/8000s high-speed sync, flash exposure compensation, manual focus assist, rear curtain sync, etc.

Withstanding Overheat and Useful Functions

- GN36 (m ISO 100, @105mm), 22 steps of power output (1/1-1/128).
- Support TTL/M/Multi/S1/S2 modes, 24-105mm auto/manual zooming.
- With C.Fn custom function settings.

Tech Specs

Model	V350C / V350N / V350S / V350F / V350O
Compatible Cameras	Refer to compatible camera models
Guide No.	36 (m ISO 100)
Flash Coverage	24 to 105mm -Auto zoom (Flash coverage set automatically to match the lens focal length and image size) -Manual zoom -Swinging/tilting flash head (bounce flash): 0 to 270° horizontally and -7° to 90° vertically
Flash Duration (t0.1)	1/350 to 1/20000 seconds
Exposure Control	
Exposure control system	TTL autoflash and manual flash
Flash exposure compensation (FEC)	Manual. FEB: ±3 stops in 1/3 stop increments (Manual FEC can be combined.)
Sync mode	High-speed sync, first-curtain sync, and second-curtain sync
Multi flash	Provided (up to 90 times, 90Hz)
Wireless Flash (2.4G radio transmission)	
Wireless flash function	Transmitter, Receiver, Off
Controllable slave groups	3 (A, B and C)
Transmission range	≤50m
Channels	16 (1-16)
Auto Focus Assist Beam	
Effective range	Center: 0.6-4m / Periphery: 0.6-2.5m
Power Supply	
Lithium batteries	7.2V/2000mAh
Recycle time	0.1s-1.7s
Full power flashes	Over 500
Power saving	Power off automatically after approx. 90 seconds of idle operation.
Sync Triggering Mode	Hotshoe, optic triggering
Dimensions	
W x H x D	150*62*38 mm
Weight without battery	210g
Weight with battery	290g



TT685II C N S F O

TT685II

Godox pushes further the boundary of the strong performer TT685 to optimize users' shooting experience. The TT685II is upgraded in various aspects while also inheriting all the powerful features of the TT685.

Key Features

New Features:

- Upgraded with a broader tilt angle from -7° to 120°, and rotatable in 330°.
- Added with the TCM function allowing for instant conversion from TTL to manual mode to improve your shooting efficiency
- Designed with a quick-release lock to ensure a smooth setup helping you capture the next masterpiece in the critical moments.

More Functions:

- Godox 2.4G Wireless X System
- Fully support TTL function, 1/1800 high-speed sync, flash exposure compensation, flash exposure lock, and more.
- GN60(mISO 100@200mm) and 22 steps of power output(1/1 - 1/128)
- Approx. 0.1-2.6s recycle time, 230 full power flashes (using 2500mA Ni-MH batteries).
- Auto/Manual zoom head from 20-200mm.

Tech Specs

Model	TT685II
Guide No. (1/1 output, 200mm)	GN = 60 (m ISO100)
Flash Coverage	20 to 200mm Auto zoom (Flash coverage set automatically to match the lens focal length and image size) Manual zoom Swinging/tilting flash head (bounce flash): 0° to 330° horizontally and -7° to 120° vertically
Flash Duration	1/300 to 1/20000 seconds
Exposure Control	
Exposure control system	E-TTL II autoflash and manual flash
Flash exposure compensation (FEC)	Manual. FEB: ±3 stops in 1/3 stop increments (Manual FEC and FEB can be combined.)
FE lock	With <FEL> button or <+> button
Sync Mode	High-speed sync (up to 1/8000 seconds), first-curtain sync, and second-curtain sync
Multi Flash	Provided (up to 100 times, 199Hz)
Wireless Flash	
Wireless flash function	Transmitter, Receiver, Off
Transmitter groups	A, B, C, D
Controllable Receiver Groups	A, B, C, D, E (E group can be controlled by X series flash trigger)
Transmission range (approx.)	100m
Channels	32 (1-32)
ID	01-99
Modeling flash	Fired with camera's depth-of-field preview button
Auto Focus Assist Beam	
Effective range (approx.)	Center: 0.6-10m / 2.0-32.8 feet Periphery: 0.6-5m / 2.0-16.4 feet
Power Supply	
Power Source	Ni-MH battery (recommended) or LR6 alkaline battery ⁴
Recycle Time	0.1 - 2.6s (Rechargeable Ni-MH Battery)
Full Power Flashes	Approx. 330 times
Power Saving	Power off automatically after approx. 90 seconds of idle operation. (60 minutes if set as Receiver)
Sync Triggering Mode	Hotshoe, 2.5mm sync line
Dimensions	
W*H*D	64*76*190 mm
Weight without battery	405g
Weight with battery	489g
2.4G Wireless Frequency Range	2413.0MHz-2464.5MHz
Max. Transmitting Power	5dbm



TT350 C N S F O P

TT350

This TT350 Mini flash mainly use with popular cameras or mirrorless cameras and is compatible with TTL autoflash.

TT350C/TT350N/TT350S/TT350F/TT350O/TT350P separately applies to Sony/Nikon/Canon/Fuji/Olympus(Panasonic)/Pentax cameras. It is easy to gain perfect light effects.

Key Features

- Built-in Godox 2.4G X wireless system
- Fully support TTL function
- Optic transmission with even illumination and stable output
- 0.1-2.2s fast recycling time and 210 full power output with powerful 2500mAh battery capacity
- Auto/Manual zoomable flash head

Tech Specs

Model	TT350C/TT350N/TT350S/TT350F/TT350O/TT350P
Compatible Cameras	Refer to compatible camera models
Guide No.	36 (m ISO 100)
Flash Coverage	24 to 105mm ·Auto zoom (Flash coverage set automatically to match the lens focal length and image size) ·Manual zoom ·Swinging/tilting flash head (bounce flash): 0 to 270° horizontally and -7° to 90° vertically
Flash Duration (t0.1)	1/350 to 1/20000 seconds
Exposure Control	
Exposure control system	TTL autoflash and manual flash
Flash exposure compensation (FEC)	Manual. FEB: ±3 stops in 1/3 stop increments (Manual FEC can be combined.)
Sync mode	High-speed sync, first-curtain sync, and second-curtain sync
Multi flash	Provided (up to 90 times, 90Hz)
Wireless Flash (2.4G radio transmission)	
Wireless flash function	Transmitter, Receiver, Off
Controllable slave groups	3 (A, B and C)
Transmission range	≤30m
Channels	16 (1-16)
Auto Focus Assist Beam	
Effective range	Center: 0.6-4m / Periphery: 0.6-2.5m
Power Supply	
AA batteries	Ni-MH batteries (recommended) or 2*LR6 alkaline batteries
Recycle time	Approx. 0.1-2.2 seconds (eneloop Ni-MH batteries of Panasonic). Red LED indicator will light up when the flash is ready.
Full power flashes	Approx. 210 (2500mA Ni-MH batteries)
Power saving	Power off automatically after approx. 90 seconds of idle operation.(60 minutes if set as slave)
Sync Triggering Mode	Hotshoe, optic triggering
Dimensions	
W x H x D	140*62*38 mm
Weight without battery	200g



TT600 TT600S



TT600/TT600S

Thinklite Camera flash TT600 adopts built-in Godox 2.4G wireless X system with abundant functions. With Master and Slave wireless flash system, TT600 fits all DSLR camera brands e.g. Canon, Nikon, Pentax, Olympus, etc. TT600S fits Sony cameras (MI Hotshoe).

Key Features

Built-in Godox 2.4G Wireless X System

- Optical & 2.4G wireless transmission offer even and stable output. With built-in Godox 2.4G wireless X system, TT600/TT600S is compatible with AD360II-C, AD360II-N, TT685C, TT685N, X1T-C, X1T-N, etc.

Wireless Triggering

- Utilizing Godox 2.4G wireless X system, TT600/TT600S can be triggered and controlled by only a X1T-C or X1T-N transmitter (sold separately). TT600/TT600S can achieve 1/8000s high-speed sync functions when using in combination with high-speed triggers e.g. Godox Cells II transceiver, X1 TTL wireless flash trigger, etc.
- Note: Hi-speed sync triggering mode is not available when TT600/TT600S is mounted onto the camera.

Abundant Functions

- Gn 60 (m ISO 100, @200mm), 22 steps of power output (1/1~1/128).
- Approx. 0.1-2.6s recycle time, 230 full power flashes (using 2500mAh Ni MH batteries). With C.FN custom function settings, focus assist lamp, buzz function, over-temperature protection, etc.

Tech Specs

Model	TT600	TT600S (For Sony)
Guide No.	GN60 (m ISO 100) (1/1 power @ 200mm)	
Vertical Rotation Angle	-7° to 90°	
Horizontal Rotation Angle	0 to 360°	
Power Supply	Ni-MH batteries (recommended) or 4*LR6 alkaline batteries	
Full Power Flashes	Approx. 230 (2500mAh Ni-MH batteries)	
Recycle Time	Approx. 0.1-2.6 seconds (eneloop Ni-MH batteries of Panasonic). Red LED indicator will light up when the flash is ready.	
Flash Duration	1/300s-1/20000s	
Color Temperature	5600±200K	
Wireless Flash Function	Transmitter, Receiver, Off	
Controllable slave groups	5 (A, B, C, D, E)	
Transmission Range (approx.)	100m	
Channel	1~32	
Dimension	64mm *76mm*190 mm	
Weight without Battery	400g	
Weight with Battery	500g	

For Sony
MI Hotshoe (TT600S)



Hotshoe
(TT600)



Godox 2.4G
wireless X system



TT560II TT520II



TT560II/TT520II

TT560II TT520II TTL Auto flash mainly use with popular cameras or mirrorless camera. It can be applied with main camera brands and equipped with multi-functions.

Key Features

- Suitable for almost all DSLR cameras with standard hotshoe
- 1/300-1/20000s flash speed, delivering crisp, clear and vivid images
- 3 flash modes: M, S1 and S2 for improved versatility and usability
- 8 variable flash output from 1/128 to full, meeting your flashlight demand
- Multiple auto-self protections for power saving and against overheating
- Added with sync socket and terminals for external power pack

Tech Specs

Model	TT560II	TT520II
Guide number	38 (m ISO 100)	33 (m ISO 100)
Flash mode	M, S1, S2	
Vertical rotation angle	0~90 degrees	
Horizontal rotation angle	0~270 degrees	
Power	4xAA batteries (Alkaline or Ni-MH are usable)	
Lighting times	100-1500 times (AA alkaline batteries used)	
Recycle time	approx 0.1-5s (AA alkaline batteries used)	
Color temperature	5600K±200K	
Wireless frequency	433MHz	
Channel	16	
Workable distance	15m	
Flash duration	1/300S-1/20000S	
Dimensions	190*75*55mm	
Net weight	310g	



MACRO
LIGHT



Small World Big Magic



Macro Flash **MF12**



Accessories

- Extreme Close-Up Positioning Adapter Specially designed slope structure that helps to illuminate inwards and light up the narrow space light before the lens.



- Color filters MF-11C for creating a colorful light effect



- This Adapter Ring Kit contains eight adapter rings for mounting the MF12 Macro Flash to your lens. The ring sizes include 49, 52, 55, 58, 62, 67, 72, and 77mm.



MF12

MF12 is perfect for macro lighting, which enables you to shoot beautiful and sharp photos of small subjects in extremely close distance. It's not only ideal to work individually, but also can serve as a multi-flash solution when several units attach to the mounting ring, forming a ring flash effect or more other flexible light effects as you wish.

Key Features

Adjustable head for quick positioning

- Adjustable head for quick positioning, even extreme close-up range is within its reach. Compact size results in "invisibility", lighting up the object while hiding itself away easily from the frame.

Flexibility Helps Perfection

- Instead of illuminating forward only, every flash can rotate to a different angle freely and slide around the mounting ring for correct positioning.

Compact Design

- optimized for close-up photography due to its compact design and unique ability to be mounted directly to a lens via an optional adapter.

Rechargeable High-Performance Battery

- The powerful built-in lithium battery supports approximately 500 full-power flashes with a 0.01 to 1.7 second recycling time, easily rechargeable through an included USB Type-C cable.

Tech Specs

Model	MF12
Built-in Lithium Battery	3.7V/1700mAh
Guide No. (1/1 output)	GN=16.1 (±0.1)
Flash Power	12W
Output Level	8 levels: 1/128-1/1
Brightness of LED Modeling Lamp	1~10 Levels
Display	OLED Display
Optical Flash	S1 Secondary Optic Triggering S2 Secondary Optic Triggering with Anti-preflash
Flash Mode	TTL Autoflash, M manual flash
Flash Duration	1/1200s-1/34000s
2.4G Wireless Transmission	ON/OFF
Channel	32 channel: 1~32
Group	5 group: A/B/C/D/E
ID	OFF/01~99
Transmission Distance	30m
Type-C Power Charging	5V 2A
Full Power Flashes	Approx. 500
Recycle Time	Approx. 0.01~1.7s
Battery Level Indication	Battery level indicator shows on the upper right corner of the display
Power Saving	30min/60min/90min: It will automatically power off when unattended operation over 30min/60min/90minutes. OFF: Turn off auto power off mode, energy-saving performance is invalid.
Dimension	
Size	81*76.5*64.3mm
Net Weight	≈144g

MF12-K2 Two light kit for MF12

MF12	x2	
Carry Case Cb31	x1	
Flash Stand	x2	
Color Filter Holder	x2	
Extreme Close-Up Positioning Adapter	x2	
Color Temperature Adjustment Set MF-11T	x2	
Adapter Rings Kit AR-R Kit	x1	
Cold Shoe Adapter	x2	
Color Effects Set MF-11C	x2	
Mounting Ring MF-AR	x1	
Type-C USB Cable	x2	



Two lights kit



Four lights kit



Six Lights Kit



MF-CB

The round adapter MF-CB is designed to increase the light shaping capacity of MF12 to fulfill the various needs of macro photographers. Attaching it onto the square-shaped flash head, you'll get a round mount compatible with the Godox AK-R1 Accessory Kit, which

includes dome diffuser, diffuser plate, bounce card, honeycomb, color filters and snoot to control the beam, soften the light and change the light colors.



Honey Comb AK-R15



Diffuser Plate AK-R13



Color Filters AK-R16



Bounce Card AK-R12



Dome Diffuser AK-R11



Snoot AK-R17



Four-wing Reflector AK-R14

Macro Light MF-R76



MF-R76

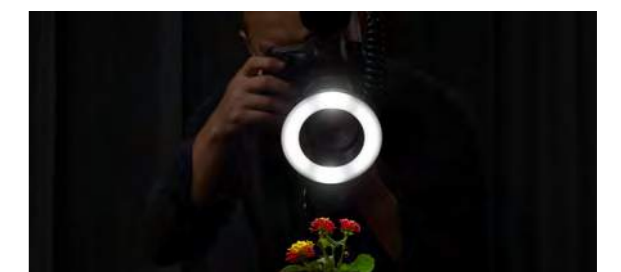
Wonderful things are taking place in every corner of the world. However, they may not be easily perceptible in our daily life. Macro photography is the key to those wonders awaiting for you to observe and explore. Therefore, Godox is more pleased to launch Macro ring flash MF-R76, another high performance unit of our macro family, delivering creative macro light solutions to all macro photographers, enthusiasts, and those working in specialist scientific applications.

Key Features

- With a ring shape design and a flash head directly attached on the front of a lens, the MF-R76 provides illumination without getting in the way or casting harsh shadows, which is ideal for the close-up images
- A dual-flash-tube design with a separate brightness control system to either fire both tubes simultaneously, or each at a time from full power to 1/128 at 1/3 stop increments to create light /dark contrast
- A couple of focus assist lamps in 10 levels of power ratio helps to make focusing and composition easier in highest efficiency.
- Including a wide range of adapter rings, compatible with lens of diameters: 49, 52, 55, 58, 62, 67, 72, 77mm.
- The controller unit uses a hot shoe which is able to be compatible with all of the majority cameras.
- The rechargeable lithium battery delivers up to 660 flash times in full power

Tech Specs

Macro Ring Flash	MF-R76
Guide No.	GN13/43(ISO 100 in meter/feet)
Adapter	20V/4.8A
Compatible Camera	Canon, Nikon, Sony, Fuji, Olympus, Panasonic, Pentax
Lithium Battery	7.2V/2600mAh
Flash Power 1/1 Power Output	76Ws
Modeling Light Power	1W*2
Modeling Light CCT	5600K
Flash Ratio Control	1/1-1/128(with 1/3 increment each stop)
Flash Duration	1/300s-1/20000s
Inner Diameter of Light Body	77mm
Flash Range	3cm-1.5m
Recycle Time	0.1-1.5s
Full Power Flashes	660
Working Environment Temperature	-10-50°C
Ring Flash Dimension	130*130*27mm/5.1*5.1*1.1 inches
Controller Dimension	120*70*50mm/4.7*2.7*1.9 inches
Net Weight	≈458g/16.1oz
Net Weigh twith battery	≈577g/20.3 oz



MACRO LIGHT

RING72

RING72



MACRO LIGHT

RING72



RING72

Ring 72 is featuring with high versatility and high output Leds for both video and pictures. The circular design ensure even and soft lighting. Whether to work in professional field such as macro photography, clinical dental photography, or to recors cherished moments in daily life,it will provide the best light effect you need.

Key Features

- Powerful LEDs: featuring 72 high quality daylight-balanced 5600K LEDs to better present every detail of small things and ease your video shooting.
- Flexible light head: allow photographers to circle 360 freely around the subject to fully show all the angles and details.
- Multi-use: available for both on and off camera and enable shooting without worrying distance and direction.
- Separately controlling the brightness of the left and right half: allow you to easily vary the contrast of your pictures.
- Dual power supply:running with 4AA lithium batteries or a detachable lithium battery.

8 different sizes(49mm,52mm,55mm,58mm,62mm,67mm,72mm,77mm)



Tech Specs

Model	RING72	
Output Power	8W	
Brightness Control	Separate control on the left/right half	
Dimming Range	10%-100% adjustment in 10 levels	
Power Supply	AA size large capacity	1.5V*4 pieces alkaline battery or rechargeable Ni-MH battery (sold separately)
	Lithium Battery (sold separately) 7.2V/2600mAh	
Color Temperature	5600K	
Number Of LED Lamp Beads	72 pcs	
TLCI	≥97	
CRI	≥96	
Volume	Ring Light: 132*30mm	Controller: 84*71.5*50.5mm
Net Weight	245g (ring light+controller)(battery not included)	

Accessories

There are 8 kinds of adapter rings been offered to match with different needs and cameras.



Capture Eye Light with Ring72

Featuring 72 high-quality daylight-balanced 5600k LEDs, Ring72 is powerful enough to present detail while reducing harsh shadows. Aiming to let everyone, especially beginner, to get the hang of it soon and make a good shot, its operation can't be easier. Simply turning on the light and rotating the dial to adjust, you're prepared to start. Moreover, it is available for both on/off-camera usage, which unleashes your creativity profoundly. Regardless of distance and direction, within the cable's stretch, is within your ideas'reach.

In portrait shooting, catchlights play an important role in creating dimension and depth, and in adding life to a portrait by drawing attention to the eyes.

The One typical way of creating catchlight is to placed the light at a 45-degree angle and angled downward, ring lights work well as a normal light source. The Ring72 makes your skin glowing by soft illumination and leaves beautiful catchlight in the eyes.Thanks to the brightness of a continuous ring light, your subject's pupils will be constricted, allowing you to see more of the color in their eyes.



PB960



PB960

PB960 Dual Output Power Pack adds a power output port so as to providing power to two flashes at the same time. Powerful battery helps improve working duration, greatly increase flash times and reduce recycling time. Perfect for photojournalism, event, sports, wedding and location photography, shooting never interrupted!

Tech Specs

Model	PB960
Battery Unit	Lithium battery 10.8V/5800mAh
Battery Charging Time	Approx. 4.5 hours
Full Power Recycle Time	Approx. 1s
Full Power Flashes	Approx. 2100

(on Canon 580EXII or Nikon SB900)

Key Features

- **Powerful:** Large-capacity lithium battery offers up to 1800 full power output and 3 hours working duration
- **Quick recycling time:** With PB960, it taked only 1s recycling time for Canon 580EX, Nikon SB900, and Sony F58AM at full power charging status.
- **Strong Compatibility:** Compatible with on-camera flashes from main camera brands.
- **Dual power supply:** Special power supply designed for charging two flashes at the same time. And the battery chamber is replaceable and removable.
- **LED Display:** Clear and concise LED display panel represents electric quantity and working status. It also alarm for over heat and lower battery.
- **Portability:** Slim and lightweight, with built-in belt clip and shoulder strap, it easy to carry to everywhere.



**HYBRID
LED & FLASH**

FV150/FV200



Flash Mode



The brightness of flash is four times of LED's



Over 10 continuous flashes per second in 1/2 power



1/8000s HSS



Godox wireless X system

LED Mode



Soft light effects



0-100% Precise brightness adjustment



8 FX special effects

FV150/FV200

High Speed Sync Flash and Continuous Light FV series add flash functions based on the traditional LED light. FV series can be served as a flash, as well as an LED light. With strong power, abundant functions and 8 FX special effects modes, it can achieve creative shooting easily.

Key Features

As a Flash

- The flash light brightness is four times of LED light's, which increase the freezing ability of instantaneous action.
- Supports 1/8000s high-speed sync function.
- Over 10 continuous flashes per second and 8 continuous flashes per second in high-speed sync mode in 1/2 power output.
- Built-in Godox 2.4G wireless receiver, compatible with Canon, Nikon, Sony, Fuji, Panasonic, Olympus and Pentax cameras.
- 1/16-1/1 or 6.0-10.0 power output displayed in the form of fractions or decimal.
- Adjust modeling lamp's light brightness from 5% to 100%.

As a LED Light

- With soft light effects and high light brightness which can be precisely adjusted from 0% to 100%.
- With 8 FX special effects mode to simulate various of shooting scene and achieve creative shooting.

More Design Details

- Support wireless control.
- With U-type bracket to adjust different angles easily.
- Bowens-mount.
- Large and clear LCD display.
- Excellent heat dissipation.

Tech Specs

High Speed Sync	FV150	FV200
Flash LED Light		
Power Supply	100~240V(50/60Hz)	
Power	150W	200W
Color Temperature	5600±200K	
100% Light Brightness (LUX, 1M)	≈12000	≈18000
CRI(=)	96	96
TLCI(=)	96	96
Light Brightness Range of LED Mode	0%-100%	0%-100%
Operation Temperature	-10°~45°C	-10°~45°C
Power Output	1/16-1/1 or 6.0-10.0	1/16-1/1 or 6.0-10.0
Channel	32	32
Group	16(A,B,C,D,E,F,0-9)	16(A,B,C,D,E,F,0-9)
Dimension (not included a standard reflector)	34x20*16cm	36.7x20*16cm
Net Weight	3.13Kg	3.33Kg



Photo by Jodie Andrews

LF308



Flash Mode



The brightness of flash is four times of LED's



Over 10 continuous flashes per second in 1/2 power



Godox wireless X system

LED Mode



Soft light effects



0-100% Precise brightness adjustment



Li-ion & AC Power Supply

LF308

Featured with wireless group control and brightness adjustment with high lighting, LF308 fits various professional shooting occasions: wedding, journalistic and object video photography.

Key Features

As a Flash

- The light is 3 times brighter when used as flash than when used as a led light.
- 1/8-1/1 or 7.0-10.0 power output displayed in the form of fractions or decimal.
- The modeling lamp's light brightness can be adjusted from 0% to 100%.

As a LED light

- 308 beads offers high brightness and stable light source.
- 0%-100% precise brightness adjustment.
- For the daylight version, the color temperature is fixed at 5600K. For the bicolor version, the color temperature is adjustable between 3300K and 5600K.



Tech Specs

LED Flash Light	LF308D Daylight Version	LF308Bi Bicolor Version
Lithium Battery	7.4V Lithium Battery (SONY NP-F970 model lithium battery) (sold separately)	
DC Power Supply	6.5-12V 4A	
Channel	32	
Group	6 groups(A, B, C, D, E, F)	
Power	Max. 18W	
Color Temperature	5600K±300K	3300K-5600K ±300K
Brightness (LUX)	LUX≤1300 (1 m)	LUX≤1200 (1 m)
Light Brightness Range	10%~100%	
Power Output Control	OF, 7.0-10(1/8-1/1)	
Triggering Method	Sync cord, test button, 2.4G wireless, Bluetooth	
LED Beads	308	308
Quantity	(5600K:154;3300K:154)	
Operation Temperature	-10-50 °C	
Dimension	180mm*185mm*40mm (not with the Handle)	
Net Weight	400g	

SMARTPHONE LIGHTING



RGB MINI CREATIVE LIGHT

R1/M1

R1



R1

Round RGB Mini Creative Light R1 can change different colors and achieve creative light effects with RGB mode, bicolor modes and 39 special effects modes.

Key Features

- Beautiful Colors for Your Choice With approx. 98 CRI and 97 TLCI, it can present projects authentically.
- Simulate Special Effects of Different Scene There're 39 different patterns in RGB scene mode.
- Built-in Lithium Battery and Charge with Type-C USB Port Freely adjust light brightness from 0% to 100%.
- Compatible with Various of Accessories and Achieve More Light Effects With magnetic accessory port, this light supports to install AK-R1 round head accessories and achieve creative shooting.

Tech Specs

Model	R1
Built-in Lithium Battery	1800mAh
Power	Max. 5W
Charging power supply	5V1A, 5V2A
Color temperature range	2500K-8500K
100% Illuminance(LUX)(0.5m)(=)	605
CRI(=)	98
TLCI(=)	97
Light brightness range	0%~100%
Duration (continuous output in 100% power)	Approx. 90 Minutes
Operation temperature	-10~45°C
Dimension	Diameter: 75mm; Thickness:23mm
Net weight	150g

M1



M1

With 40 special effects modes, fashion appearance, simple operation and great portability, RGB Mini Creative Light M1 is suitable for macro photography, video shooting, microfilm, live, portrait shooting, product shooting, etc.

Key Features

- Freely switch CCT mode, RGB mode and 40 FX special effects modes.
- Easy to adjust color temperature, light brightness, hue and color saturation
- With a dedicated screen to display parameters precisely
- With a universal accumulating bracket to quickly adjust different lighting angles
- With simple operation and light and thin body which offers great portability
- Various of using methods

Tech Specs

Model	M1
Charger(separately sold)	5V2A/18W QC3.0 (5V3A,9V2A,12V1.5A)
Power	Max. 13W
Color temperature range	2500K-8500K
Light brightness range	0%~100%
RGB Color gamut	0~360°
100% Illuminance(LUX)	Max. 1700
CRI(=)	97
TLCI(=)	97
Bracket rotation angle	Main axis: 360°; Inside axis: 270°
Operation temperature	-10~45°C
Dimension	145*70*15mm
Net weight	240g

LEDM32



LEDM150



LEDM32/LEDM150

With 40 special effects modes, fashion appearance, simple operation and great portability, RGB mini creative light M1 is suitable for macro photography, video shooting, microfilm, live, portrait and product shooting.

Key Features

- Freely switch CCT mode, RGB mode and 40 FX special effects modes.
- Easy to adjust color temperature, light brightness, hue and color saturation.
- With a dedicated screen to display parameters precisely.
- With a universal accumulating bracket to quickly adjust different lighting angles.
- With simple operation and light and thin body which offers great portability.
- Various of using methods.

Tech Specs

LED Light	LEDM32	LEDM150
Built-in Lithium Battery	3.7V 300mA	3.7V-3000mAh
Power	Max. 1.4W	Max. 9W
Color Temperature	5200K±300K	5600K±300K
Brightness (LUX)	>120 (0.5 m)	1029 (0.5 m)
Color Rendering Index	≥95	>95
TLCI	≥94	≥94
Light Brightness Range	10%~100%	10%~100%
LED Beads Quantity	32	150
Operation Temperature	-10~50°C	-10~50°C
Dimension	50mm*50mm*28mm	132mm*80mm*20mm (not with the L-type Bracket and Mounting Bracket)
Net Weight	30g	170g

TRIGGER





XProII

XProII, TTL wireless flash trigger for Leica, establishes an important connection between Godox and Leica users. Godox flash can be connected through XproII, with a part of Leica cameras. You would adjust the output of your flash, trigger the flash remotely, and finally create your professional results.

Key Features

- Both TTL and HSS are offered, which allows you to use your flash at shutter speeds up to 1/8000s.
- Separate channels and IDs can effectively avoid signal interference.
- Controls remotely all setting through the App, Godox Flash.
- Uses multi-shooting mode when shooting the same object with others and sharing a set of fixed lights.
- Meters the light by Sekonic L858 and adjusts the flash value of your Godox flash.
- Converts to manual flash value with TTL flash value as reference.
- The speed of burst mode shooting can be significantly increased by single contact triggering.

Tech Specs

Model	XPROII
Compatible cameras	Leica cameras (TTL autoflash) Cameras that have PC sync socket.
Power supply	2*AA batteries
Flash Exposure Control	
TTL autoflash	Yes
Manual flash	Yes
Stroboscopic flash	Yes
Functions	
High-speed sync	Yes (Set on cameras)
Second-curtain sync	Yes (Set on cameras)
Flash exposure compensation	±3EV(exposure value), adjustable in 1/3 EV increment
Flash exposure lock	Yes
Focus assist	Yes
Modeling lamp flash	Control the modeling lamp flash by flash trigger
Beeper	Control the Beeper by flash trigger
Wireless Shutter	The receiver end can control the camera shooting through the 2.5mm sync cord jack
ZOOM setting	Adjust the ZOOM value by the transmitter from 24 to 200
TCM function	Transform the TTL shooting value into the output value in the M mode
Firmware upgrade	Upgrade through the Type-C USB port
Memory function	Settings will be stored 2 seconds after last operation and recover after a restart
Display	Large LCD panel, backlighting ON or OFF
Wireless Flash	
Transmission range (approx.)	0-100m
Built-in wireless	2.4GHz
Modulation mode	MSK
Channel	32
Wireless ID	01-99
Group	16
Other	
Dimension	95mm*62mm*49mm
Net Weight	93g
2.4G Wireless Frequency Range	2413.0MHz-2464.5MHz
Bluetooth Transmission Frequency	2402.00MHz-2480.00MHz
Max. Transmitting Power	5dbm



XPro

Godox XProC TTL Wireless Flash Trigger can be used to effectively and reliably trigger flashes from up to 100m away, and when used with compatible flashes and receivers users will have the added benefit of remote power control. It supports high-speed sync up to 1/8000 second, and offers advanced control options along with settings for working with system-specific features. Stroboscopic flash and second-curtain sync are available.

Key Features

- Works with X Wireless Radio System
- 32 Channels; 16 Groups; Wireless ID
- Remote Power Control for Select Flashes
- Backlit LCD Panel
- High-Speed, 1st & 2nd Curtain Sync
- 2.5mm Sync Port; USB Type-C Port
- Runs on Two AA Batteries

Tech Specs

Model	XPro-C	XPro-N	XPro-S	XPro-F	XPro-O	XPro-P
Compatible cameras	Canon EOS cameras (E-TTL II)	Nikon cameras (i-TTL autoflash)	Sony cameras (TTL autoflash)	Fujifilm cameras (autoflash)	Olympus& Panasonic Cameras (TTL autoflash)	Pentax Cameras (TTL autoflash)
Battery Type	AA battery x2					
Flash exposure control						
TTL autoflash	E-TTL II	i-TTL	TTL	TTL	TTL	TTL
Manual Mode	Double AA batteries					
Multiflash mode	✓					
Functions						
High-speed sync	✓					
Rear-curtain sync	✓					
Flash exposure compensation	✓					
Flash exposure lock	✓ (±3 stop in 1/3 increment)					
Focus assist	✓					
Modeling lamp	✓					
Beeper	✓					
Wireless shutter release	The receiver can control the camera shooting via 3.5mm sync cord jack					
Zoom setting	Adjust the focal length of the flash through the transmitter					
TCM function	Converting the shooting parameter under the TTL mode to a value under the Manual mode					
Firmware upgrade	Support program firmware upgrade via Type C USB cable					
Memory function	As long as 2 seconds after setting parameters, the parameters will be remembered, and the original data will be recovered once restart.					
Wireless Flash						
Transmission range (approx.)	0-100m					
Built-in Wireless System	2.4G Wireless Transmission					
Modulation mode	MSK					
Channels	32					
Wireless ID	01-99					
Groups	16					
Others						
Display	A large LCD panel, backlighting ON or OFF					
Dimension(mm)	90 x 58 x 50					
Net weight (g)	80					



X2

Based on X1T, besides Canon/Nikon/Sony/Fujifilm/Olympus/Panasonic versions, Godox also adding Pentax capabilities to our X2T trigger system. X2T provides you with an outstanding set of features, including support for wireless power control and TTL, including high-speed sync, as well as compatibility with iPhone or Android Compatible Godox App. All the settings are easily viewed on the trigger's large LCD display, which can be backlit along with the group and function buttons.

Key Features

- Wireless Transmitter for Flash
- High Speed Sync up to 1/8000 sec
- 3.5mm Sync & USB Type-C Port
- iPhone or Android Compatible Godox App
- Bluetooth Through Smartphone or Tablet
- Backlit LCD, Group, and Function Buttons
- Hot Shoe Quick Lock

Tech Specs

Model	X2T-C	X2T-N	X2T-S	X2T-F	X2T-O	X2T-P
Compatible cameras	Canon EOS cameras (E-TTL II)	Nikon cameras (i-TTL autoflash)	Sony cameras (TTL autoflash)	Fujifilm cameras (autoflash)	Olympus& Panasonic Cameras (TTL autoflash)	Pentax Cameras (TTL autoflash)
Compatible mobile phone	iPhone, HUAWEI, Samsung (see the compatible smartphone models for details.)					
Power supply	AA battery x2					
TTL autoflash	E-TTL II	i-TTL	TTL	TTL	TTL	TTL
Manual Mode	Double AA batteries					
Multiflash mode	✓					
High-speed sync	✓					
Rear-curtain sync	✓					
Flash exposure compensation	✓					
Flash exposure lock	✓ (±3 stop in 1/3 increment)					
Focus assist	✓					
Modeling lamp	✓					
Beeper	✓					
Wireless shutter release	The receiver can control the camera shooting via 3.5mm sync cord jack					
Zoom setting	Adjust the focal length of the flash through the transmitter					
TCM function	✓					
Transmission range (approx.)	0-100m					
Built-in Wireless System	2.4G Wireless Transmission					
Modulation mode	MSK					
Channels/Wireless ID/Groups	32Channels/01-99Wireless ID/5Groups					
Dimension/Net weight	72x70x58mm / 90g					



X1

Godox has Canon/Nikon/Sony/Fujifilm/Olympus/Panasonic versions in X1T trigger. X1T flash triggers are excellent choice for shooters who need to work quickly. The wireless X1T flash triggers gets full TTL capabilities and high speed sync with flash exposure compensation, and flash exposure lock, among other settings. X1T can fire a single flash or multiple dedicated flash units within 5 groups, 32 channels, and 99 ID settings to avoid interference from other nearby systems. X1R receiver has Micro USB port and 2.5mm shutter release port, facilitating applications such as wireless shutter release and wireless studio flash trigger.

Key Features

- Works with X Wireless Radio System
- TTL capabilities
- Backlit LCD Screen
- Sync Delay Settings
- Exposure Compensation & Exposure Lock
- Ratio Flash Mode; High-Speed Sync
- PC Sync Terminal

Tech Specs

Model	X1T-C	X1T-N	X1T-S	X1T-F	X1T-O
Compatible Cameras	Canon EOS cameras (E-TTL II)	Nikon cameras (i-TTL autoflash)	Sony cameras (TTL autoflash)	Fujifilm cameras (autoflash)	Olympus& Panasonic Cameras (TTL autoflash)
Radio Frequency	2.4GHz				
Modulation Mode	MSK				
Battery Type	Double AA batteries				
Manual Flash	✓				
TTL Autoflash	E-TTL II	i-TTL	TTL	TTL	TTL
Multi Flash	✓				
TTL Control	✓				
Synchronization Delay Set	✓				
Flash Exposure Compensation	✓ (±3 stop in 1/3 increment)				
Flash Exposure Lock	✓				
Focus Assist	start manually				
Second Curtain Sync	✓ Manually set on camera				
Modeling Light	✓				
Beeper	✓				
Channels	32				
Groups	5				
Wireless Range	100m				
Transmitter Dimensions	72 x 75 x 52 mm				
Receiver Dimensions	70 x 65 x 47 mm				
Transmitter Weight	100g				
Receiver Weight	70g				

XT16



XT16

With 2.4GHz X Wireless Radio System, Godox XT16 Wireless Power-Control Flash Trigger helps you create and take control over your wireless flash setup. It has access to 16 channels for elaborate configurations. Users can sync at speeds up to 1/250 second and there are multiple power control settings for working with speedlights or studio flashes. Additionally, it runs on two easy-to-find AA batteries.

Key Features

- Wireless Power Control Function
- Mounts to Camera's Hot Shoe
- Frequency: 2.4 GHz
- Channels: 16
- Up to Eight Stops of Power Control
- Max Sync Speed: 1/250 Second
- Transmitter Runs on Two AA Batteries

Tech Specs

Model	XT16
Radio Frequency	2.4GHz
Battery Type	Double AA batteries
Sync Speed	1/250 Sec
Channels	16
Wireless Range	100m
Dimensions	97.6 x 49.9 x 37 mm
Weight	60g

DM



DM-16/DMR-16(receiver only)

Godox DM-16&DMR-16 is composed of two parts,namely signal transmitter and receiver.It is a control discreteness for camera to trigger studio flashlight synchronously.

Tech Specs

Model	DM-16	DMR-16
Transmitter Power Supply	12V lithium-ion battery	AC 100V-240V;50/60HZ
Transmitter Frequency	433MHz	
Max. Sync Speed	1/200s	
Channels	16	
Wireless Range	15~35m(outdoor)	15m(indoor)

RT



RT-16/RTR-16(receiver only)

GODOX RT-16 &RTR-16 studio flash trigger kit is designed to control camera to trigger studio strobe synchronously, Receiver runs on 2AAA batteries; 433MHZ transmit frequency. PC sync cable included.

Tech Specs

Model	RT-16	RTR-16
Power Supply	23A 12V battery (included)	2 AAA batteries
Transmitter Frequency	433MHz	
Max. Sync Speed	1/200s	
Channels	16	
Wireless Range	20~30m(outdoor)	20m(indoor)

RMII

RMII Remote Wireless Shutter Trigger

The RMII can be used to trigger studio flash, speedlites & flashguns and also as a remote trigger for your camera. Trigger Studio Strobe Connect RMII with your studio flash to trigger synchronously. Multi-channels enables you trigger more than one strobe at the same time.Suitable For: C1: CanonEOS; 550D (Rebel T2i), 1000D (Rebel XS), 500D (Rebel T1i), 450D (Rebel Xsi) Pentax; K-7,K20D C3: Canon EOS; 7D, 5D, 5D MK II, 50D, 40D, 30D, 1D,MarkIV N1: Nikon; D300s, D700, D300, D3X, D3, D3s, D200 N3: Nikon; D90, D5000 N2: Nikon; D70s, D80



FC16

Key Features

- 16 delectable channels.
- Max. sync speed to 1/250s.
- Adopting 2.4GHz wireless remote system, this remote control features multi-channel triggering, stable signal transmission, and sensitive reaction.
- Composed of transmitter and receiver, this product can function as a remote studio flash trigger, a speedlite trigger and a camera shutter release.



RC Series

Cable Shutter Release

RC Series Model: RC-C1, RC-C3, RC-S1, RC-N1, RC-N2, RC-N3, RC-OP3, RC-OP12 Auto-focus, wireless bulb shutter, single and continuous shooting Suitable for Canon, Nikon, Sony,Pentax, and Olympus cameras





Parabolic Light Focusing System

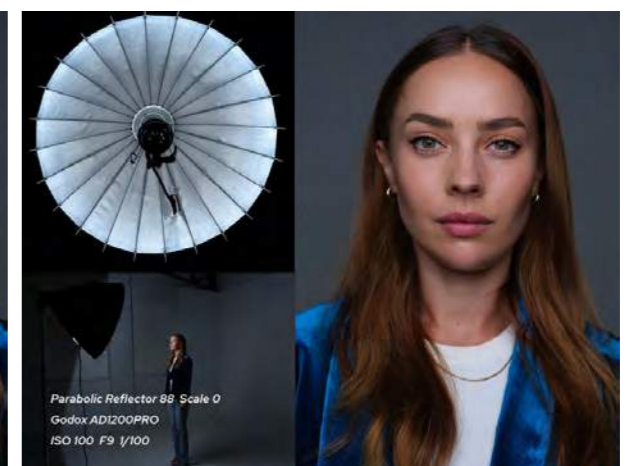
P68/P88/P128/P158

P68/P88/P128/P158

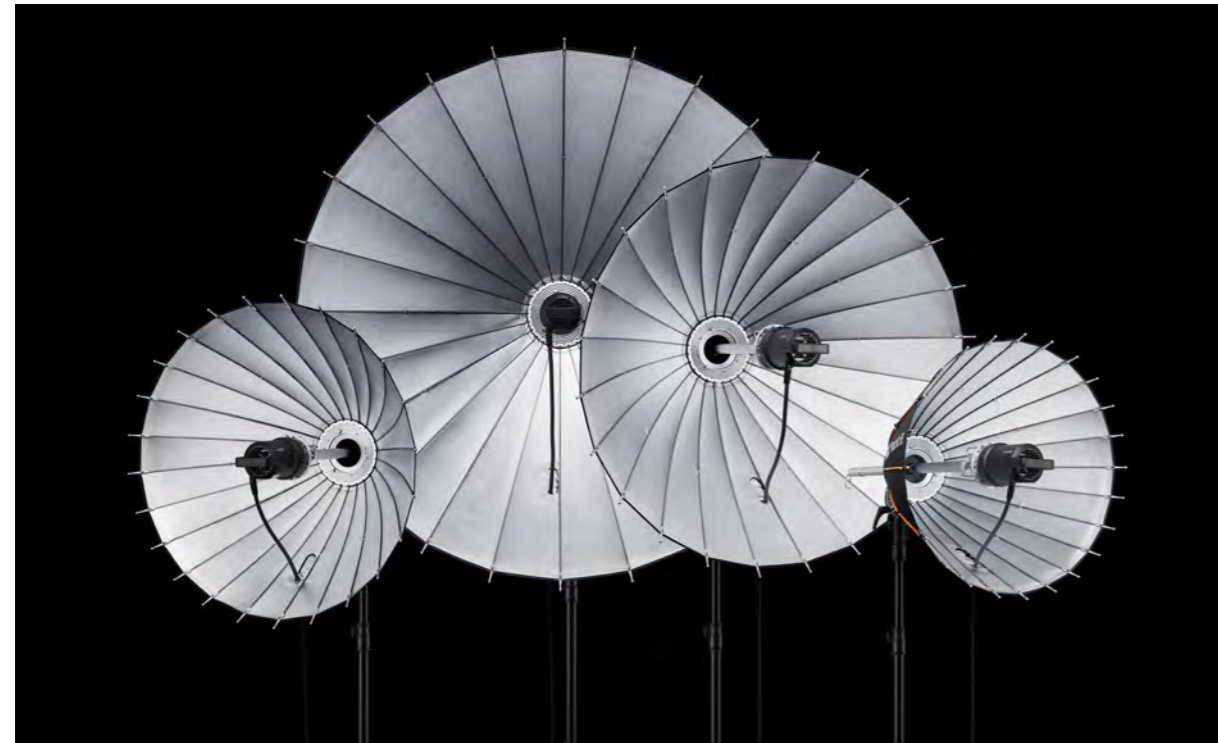
For visual artists, there is no limit to investigate the possibility of light for expressions. Godox Parabolic Light Focusing System realizes a distinctive way to shape your light. Thanks to the engineering preciseness and pursuit of excellence, the exquisite 24-brace reflector works perfectly as a light re-inventor creating dimensions no other light shapers could. Benefiting from the focusing system you will get great light variations from just one modifier. Entry the world of parabolic light for exploring the pro light shaping!

Key Features

- True parabolic ensures smooth spread, beautiful contrast and focusable versatility
- Gorgeous sculpturing effects, enhanced dimensionality
- Rich contrast could be obtained while tonal areas being evenly lit
- Vibrant colors could be well maintained
- 24 braces, efficient weapon to put your light power to good use
- Great compatibility with various mount strobes
- Thoughtful securing mechanism, prevent your light from being destroyed



Reflector reflects rays in certain angles depending on the light position. when at the focus, rays being collimated to form a focused and narrow beam with great contrast; when light is moved further out, rays tend to diffuse with less contrast.



24 braces means a large number of reflected panels that makes the modifier as close as a circular source, thus a more efficient weapon to put your power to good use.

Optional Purchase



Diffuser (with two densities for a progressive 0.5 reduction of light contrast)

D1: P68-D1/P88-D1/P128-D1/P158-D1

D2: P68-D2/P88-D2/P128-D2/P158-D2



Grid
P68-LG/P88-LG/P128-LG/P158-LG



Bowens mount adapter:PF-BM

Godox mount adapter:PF-GM



Broncolor mount adapter:PF-BRM

Profoto mount adapter:PF-PM



Mounting bracket MB-01 for AR400

Mounting bracket MB-02 for R1200/R2400

Besides the compatibility with Godox, Bowens, Broncolor and Profoto mount strobes, it also adapts Godox ring lights with optional accessories. And more to be expected with Godox future lights!

P68 Kit

Parabolic Reflector 68	x1
Grip PB-G1	x1
Focusing Mount PF-M	x1
Focusing Rod PF-R670	x1
Carry Bag CB35	x1
Strobe Adapter PF-BM	x1



P88 Kit

Parabolic Reflector 88	x1
Grip PB-G1	x1
Focusing Mount PF-M	x1
Focusing Rod PF-R670	x1
Carry Bag CB35	x1
Strobe Adapter PF-BM	x1



P128 Kit

Parabolic Reflector 128	x1
Grip PB-G1	x1
Focusing Mount PF-M	x1
Focusing Rod PF-R870	x1
Carry Bag CB35	x1
Strobe Adapter PF-BM	x1



P158 Kit

Parabolic Reflector 158	x1
Grip PB-G1	x1
Focusing Mount PF-M	x1
Focusing Rod PF-R870	x1
Carry Bag CB36	x1
Strobe Adapter PF-BM	x1



PHOTOGRAPHY

ACCESSORIES



SF6090 Kit/SF4560 Kit



SF6090 Kit/SF4560 Kit

To achieve the desired lighting effect, it takes more than just a few lights, you also need the lighting modifiers in hand to allow some fine tuning of the light. The Scrim Flag kit of Godox, which offers you a highly versatile and portable light-modifying solution, will be the best choice. With the foldable flag frames, flag fabrics, and fingers and dots, you can easily set them up in studio or on location, use them to highly control the light. For better photography, videography, and film-making, this kit can definitely help you to finely adjust the light and reach ideal tones on the pictures so as to unleash your creative potential with higher efficiency.



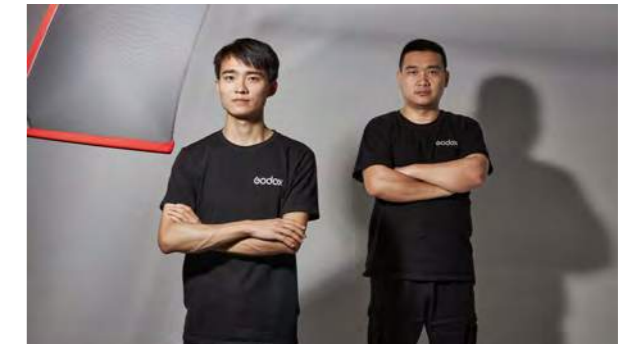
Portable, ergonomic designed

Key Features

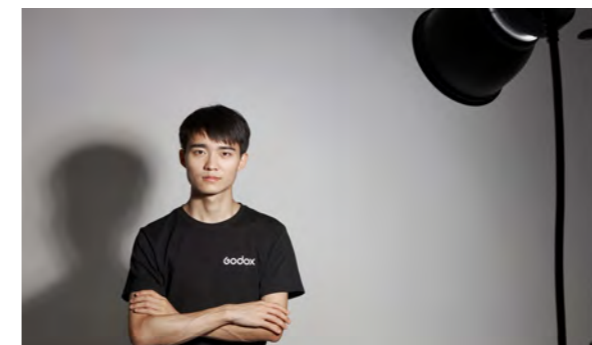
- Including two versions to satisfy more personal needs of size.
- Easy for storage and transport with an ergonomically designed carry-case.
- The compact and foldable flag scrims is extremely easy to be set up and made use of.
- The black nets and one-stop silk could be used to alter the light & dark contrast of the picture.
- The black solid could be used to block unwanted illumination, or create shadows.
- The two-stop silk could be used to diffuse and soft the light
- The dots and fingers in black net and solid fabrics allows shaping light just like the flags of black net and solid, but on smaller objects or areas. They're ideal for tabletop shooting or in situations where the larger fabrics are inconvenient.
- The open edge design of the flag scrim gives a softer cut of light, also prevent from hard transitions due to the edge.
- By finely adjust the angle of the screen in front of the light, it allows very changeable light & dark contrast; create the wanted transition at where you need.



Without Black Single Net Screen/Black Double Net Screen



Black Double Net Screen



Without One-Stop Silk Screen



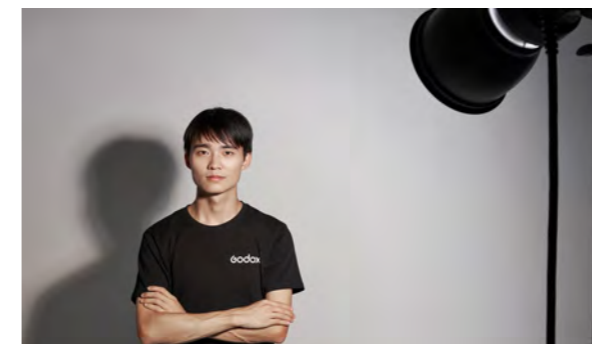
One-Stop Silk Screen



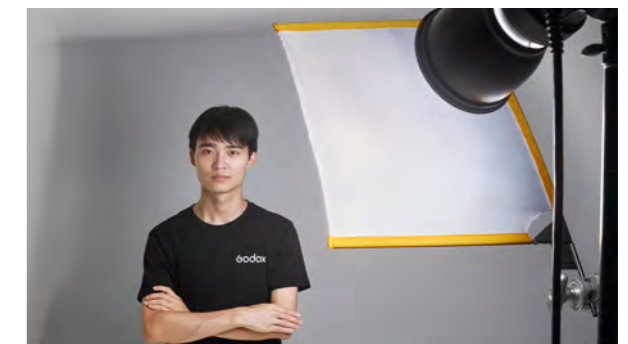
Without Black Block Solid



Black Block Solid



Without Two-Stop Silk Screen



Two-Stop Silk Screen

AD-S60/65/85



AD-S60S

Compatible with AD300Pro/ML60/ML60BI, comes with grids Godox AD-S60S is a dedicated softbox with silver interior finish and parabolic reflecting shape to deliver indirect lighting and create distinct contrasts. The softbox has native Godox mount to snap onto the AD300Pro or ML60/ML60Bi in no time, comes with two levels of diffusion to create degrees of increased softness, includes grids for extra beam directing, and has zippered slot for cables and cord placement on the side.



The Godox mount softboxes comes with a grid that eliminates spill light and provides the directional control that facilitates selective lighting.

AD-S65S/AD-S65W

Compatible with AD300Pro/AD400PRO/ML60/ML60BI, comes with grids The parabolic softbox has two model AD-S65S with silver lining and AD-S65W with white lining. AD-S65 softbox adopts parabolic box design to offer soft and even light effects for shooting. The shape of the softbox allows the user to control precisely where the light falls and soften the light stream and is built on the basis of a quick folding mechanism.



If you want a cool-toned look with snappy contrast, attach the silver reflector inside the umbrella. If you want a soft, warm rendition attach the gold reflector. The removable front diffuser makes it easy.

AD-S85S/AD-S85W

Compatible with AD300Pro/AD400PRO/ML60/ML60BI, comes with grids With deep design to output soft light with a sharp falloff, Godox AD-S85 makes feathering and edge-lighting simple. The included fabric grid thwarts spill light and offers directional control necessary for selective lighting. Its quick-folding mechanism allows you to set up and break down quickly.



Fitting most of Godox flash heads or other brands with the widely used Bowens front accessory mount. Ideal for all types of photowork, Godox softboxes render a soft, flattering quality of light with manageable contrast.



Square Softbox
Model: SB-BW-6060/9090
Sizes (W x H): 60x60cm, 90x90cm



Rectangular Softbox
Model: SB-BW-6090/70100/80120
Sizes (W x H): 60x90cm, 70x100cm, 80x120cm



Strip Softbox
Model: SB-BW-50130/35160
Sizes (W x H): 50x130cm, 35x160cm



Octagon Softbox
Model: SB-BW-95/120/140
Sizes: ø95cm, ø120cm, ø140cm



Square Softbox with Grids
Model: SB-FW-6060/9090
Sizes (W x H): 60x60cm, 90x90cm



Rectangular Softbox with Grids
Model: SB-FW-6090/70100/80120
Sizes (W x H): 60x90 cm, 70x100cm, 80x120cm



Strip Softbox with Grids
Model: SB-FW-50130/35160
Sizes (W x H): 50x130cm, 35x160cm



Octagon Softbox with Grids
Model: SB-FW-95/120/140
Sizes: ø95cm, ø120cm, ø140cm

Softbox Adapter Ring

Godox Softbox Adapter Ring allows user to mount various modifiers in different brands like Bowens, Elinchrom, Profoto, Broncolor, Hensel, etc.

- | | | | |
|--------|-----------------------------|--------|---|
| SA-U | Universal Softbox Ring | SA-EC | Softbox Adapter (Elinchrom) |
| SA-BW | Softbox Adapter (Bowens) | SA-BC | Softbox Adapter (Balcar) |
| SA-PF | Softbox Adapter (Profoto) | SA-HS | Softbox Adapter (Hensel) |
| SA-BR | Softbox Adapter (Broncolor) | SA-MB | Softbox Adapter (Multiblitz magnolux/varilux/xeulux) |
| SA-COM | Softbox Adapter (Comet) | SA-MBS | Softbox Adapter (Multiblitz digilite/compactlite/digix) |



SA-U



SA-BW



SA-PF



SA-BR



SA-COM



SA-EC



SA-BC



SA-HS



SA-MB

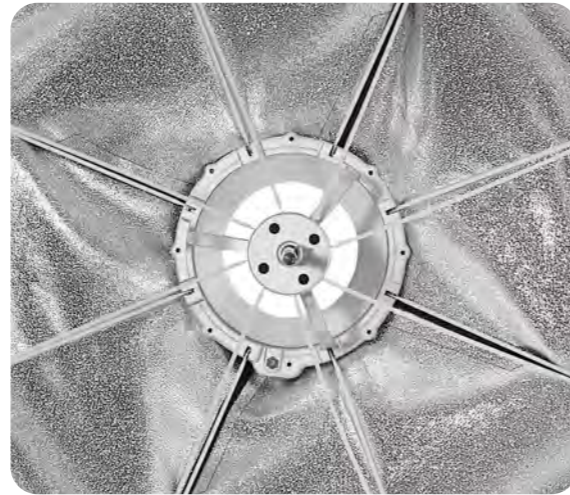


SA-MBS

UMBRELLA SOFTBOX

Umbrella Softbox with Bowens Adpater

The GODOX umbrella softboxes not only save valuable time, but also makes it easier to work on the set. This is possible thanks to the frame, which uses the principle of the umbrella. The plating fabric is stretched and held in tension by a structure whose rods are made of elastic steel. There are two versions of umbrella softboxes, the foldable Softbox installed on flash strobe by umbrella sharp (SB-UBW Series without grids & SB-GUBW Series with grids) and Umbrella Softbox and Bowens Adpater (SB-US Series without grids & SB-GUE Series with grids)



Inner design
of SB-US & SB-GUE Series umbrella softbox



Square Softbox

Model: SB-UBW6060/7070/9090
Sizes (W x H): 60x60cm, 70x70cm, 90x90cm



Rectangular Softbox

Model: SB-UBW-5070/6080/6090
Sizes(W x H): 50x70cm,60x80cm, 60x90cm



Octagon Softbox

Model: SB-UBW-80/95/120
Sizes: €80cm,€95cm, €120cm



Square Softbox with Grids

Model: SB-GUBW-6060/7070/9090
Sizes (W x H): 60x60cm, 70x70cm,90x90cm



Rectangular Softbox with Grids

Model: SB-GUBW-5070/6080/6090
Sizes(W x H): 50x70cm,60x80cm, 60x90cm



Octagon Softbox with Grids

Model: SB-GUBW-80/95/120
Sizes: €80cm,€95cm, €120cm

UMBRELLA SOFTBOX

Umbrella Softbox

The GODOX umbrella softboxes not only save valuable time, but also makes it easier to work on the set. This is possible thanks to the frame, which uses the principle of the umbrella. The plating fabric is stretched and held in tension by a structure whose rods are made of elastic steel. There are two versions of umbrella softboxes, the foldable Softbox installed on flash strobe by umbrella sharp (SB-UBW Series without grids & SB-GUBW Series with grids) and Umbrella Softbox and Bowens Adpater (SB-US Series without grids & SB-GUE Series with grids)



Inner design
of SB-UBW & SB-GUBW Series umbrella softbox



Square Softbox

Model: SB-GUE6060/9090
Sizes (W x H): 60x60cm, 90x90cm



Rectangular Softbox

Model: SB-GUE-5070/6090/70100/80120
Sizes(W x H): 50x70,60x90 cm, 70x100cm, 80x120cm



Octagon Softbox

Model: SB-GUE-80/95/120
Sizes: €80cm,€95cm, €120cm



Square Softbox with Grids

Model: SB-USW-6060/9090
Sizes(W x H): 60x60cm, 90x90cm



Rectangular Softbox with Grids

Model: SB-USW-5070/6090/70100/80120
Sizes(W x H): 50x70,60x90 cm, 70x100cm, 80x120cm



Octagon Softbox with Grids

Model: SB-GUE-80/95/120
Sizes: €80cm,€95cm, €120cm

P90L/P90H/P120L/P120H

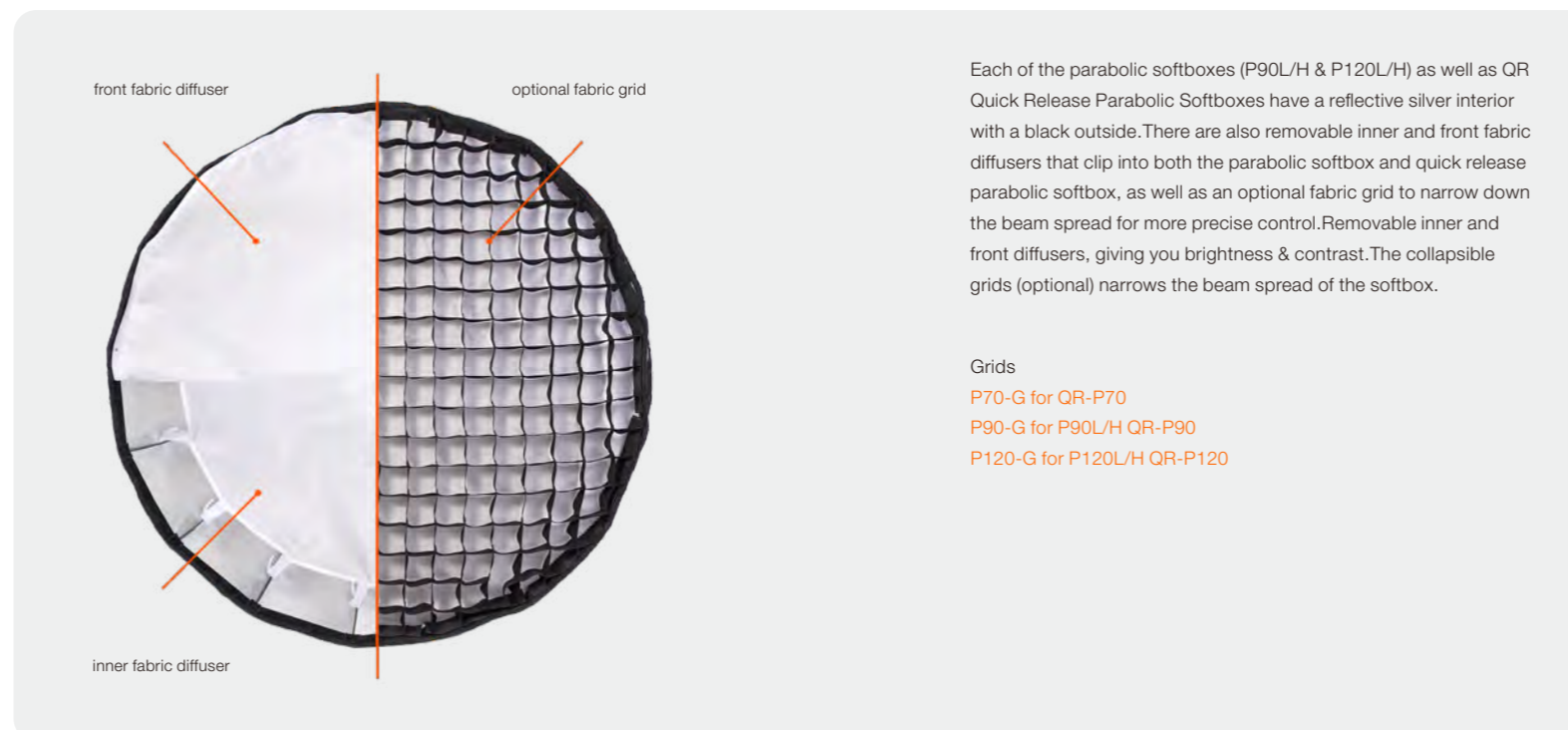


P90L/P90H

Godox Parabolic Softboxes are the essential modifier for commercial, fashion, and portrait photographers. There are two version for choice, P90L for Light Version and P90H for High Temperature Resistant Version. P90L/P90H series adopt deep parabolic box design, which enables light to be sent out straightly and brightness, offering even, soft, and high saturation light effects for shooting with easy installation, great portability. P90L/P90H comes with removable one-stop outer and inner diffusers to achieve different levels of contrast. A carry bag is included for storage and transport.

P120L/P120H

Godox P120L/P120H softbox is useful for stunning fashion and portrait images. Same as P90L/P90H, the P120 softbox also has two version. P120L/P120H is a 16-sided light-shaper offering focused, soft output with a punchy, crisp edge that lends dimension and detail to your subject as well as natural-looking catchlights in their eyes. The parabolic design yields soft, focused light with a crisp edge. With removable outer and inner diffusers, it can achieve desired contrast. A carry bag is included for storage and transport.



Each of the parabolic softboxes (P90L/H & P120L/H) as well as QR Quick Release Parabolic Softboxes have a reflective silver interior with a black outside. There are also removable inner and front fabric diffusers that clip into both the parabolic softbox and quick release parabolic softbox, as well as an optional fabric grid to narrow down the beam spread for more precise control. Removable inner and front diffusers, giving you brightness & contrast. The collapsible grids (optional) narrow the beam spread of the softbox.

Grids

- P70-G for QR-P70
- P90-G for P90L/H QR-P90
- P120-G for P120L/H QR-P120

QR-P70/P90/P120



QR-P70/P90/P120

The Godox quick release parabolic softbox adopts an impressive quick release system for rapid setup and breakdown. Highly versatile and compatible, it provides you reliable light quality and various creative expressions. Available in three different sizes, this fast and easy to use softbox is a deal companion for your indoor and on location shootings.

Key Features

- Reflective silver interior to render a punchy high contrast
- Removable inner and front fabric diffusers
- Impressive quick release system for rapid setup and breakdown
- Reliable light quality and various creative expressions
- Bowens mount strobes and continuous light compatible

QUICK RELEASE PARABOLIC BOWENS MOUNT

QR-P70/P90/P120

Compatible with any flash head or monolight that uses the popular Bowens accessory mount; The softbox can also mount with Godox mount and Profoto mount accessory via attaching the SA-GD Godox mount adapter (optional) and SA-PF2 Profoto mount adapter (optional). And speed ring SA-BR2 is for adapting Broncolor lights.



As it folds down into an easy carry bag, it's extremely portable and therefore ideal to use on location.



Effortless Softbox Setup

The easiest way to put the softbox up is to click two rods on opposite sides up at the same time. Once they're all clicked into place, you simply Velcro the top panels of the softbox together to prevent light leakage.



To take the softbox down again, you simply lift the rod slightly whilst pressing down the button above it.

In this way, you can have the softbox assembled in mere minutes.



COLLAPSIBLE LANTERN SOFTBOX

CS-85D/CS-65D

CS-85D/CS-65D



CS-85D/CS-65D

Godox Collapsible Lantern Softbox CS-85D/CS-65D is perfect for use overhead or to raise the ambient illumination level. With a 270 degree beam angle, the light is ideal for video recording, live streaming, film making, and still life photography.

Purchase skirt for achieving better light control Skirt Set for Lantern Softbox (Available for Purchase) SS-65 for CS-65D/SS-85 for CS-85D

Key Features

- Extremely Fast Setup
- Stunning, Soft, Omni-Directional Light
- Bowens Mount Compatibility
- Optional skirts for beam spread control



Thanks to its simple and durable design, this softbox is a breeze to use. The lantern can be popped open or closed in mere seconds.



S-Type Bracket



Godox offers S2/S type bracket as a mobile solution for adapting any type of speedlight or barebulb, round head strobe to create flattering, soft and rich light. The Bowens Mount S2 Bracket is more compact and portable than the original S-type bracket and lets you maximize the potential of your on-camera flash.

Key Features

- No pre-assembly or post disassembly
- Mounts speedlite vertically or horizontally
- Mounts with light pressure - no touch-fasteners
- Adjustable to fit most brands of speedlites
- Integrated umbrella mount
- Compatible with Bowens Mount accessories



Handy Speedlite Softbox Kit



Godox Handy Speedlite Softbox Kit is a mobile solution for adapting most speedlight or major Godox AD series monolights to create flattering, soft and rich softbox quality. The lightweight softbox opens and closes speedily. The kit can transform your speedlight and barebulb strobes into a snooted hair light, a texture enhancing beauty dish or even a gridded spot.

What's in the box

- Godox S2 Speedlite Bracket
- Softbox (34x34 cm)
- Front Diffuser
- Inner Diffusion Baffle
- Grid
- Carrying Bag (80x80cm)



Available in 4 sizes: 80x80cm, 60x60cm, 50x50cm, 40x40cm. Softbox opens easily and mounts on S-type bracket in seconds.

Purchase Options

S2 Bracket (Bowens mount) + bag + softbox S2: SGUV5050, SGUV6060, SGUV8080, SGGV5050(with grid), SGGV6060(with grid), SGGV8080(with grid) S-EC Bracket (Elinchrom mount) + bag + softbox SEUV4040, SEUV5050, SEUV6060, SEUV8080 S-C Bracket (Comet mount) + bag + softbox SCUUV4040, SCUUV5050, SCUUV6060, SCUUV8080



Four-Speedlite Adapter



Used for quadrupling your flash power, the adapter allows you to mount up to 4 flashes simultaneously to a separate S-Type bracket with a single knob. It allows you to use all four flash units at once for maximum power or adjust each flash individually for optimal and precise options in light intensity.

Key Features

- Durable aluminium built quality
- Create high brightness as you wish.
- Mount up to four camera flashes simultaneously
- Flexibly adjust its place with strong bearing





UB Series

Godox Parabolic Umbrella enhances your ambient lighting and is well-suited for group shots and portraits. It is a unique modifier that features a deep parabolic design, sharp falloff, and a soft but crisp but soft look. There are three versions with different interior: white for easy control, silver for defined looks, and translucent for board range. Each kit comes with a carrying bag and a diffuser.

Key Features

- Deep Design, Sharp Falloff
- Long Throw Capability
- Enhances Ambient Lighting
- Reduces Overall Contrast
- Moving Light Along Shaft Focuses Output



Silver Lining

Model	Size	Diffuser
UB-85S	φ85cm	DPU-85T
UB-105S	φ105cm	DPU-105T
UB-130S	φ130cm	DPU-130T
UB-165S	φ165cm	DPU-165T

White Lining

Model	Size	Diffuser
UB-85W	φ85cm	DPU-85T
UB-105W	φ105cm	DPU-105T
UB-130W	φ130cm	DPU-130T
UB-165W	φ165cm	DPU-165T

Translucent

Model	Size	Diffuser
UB-85T	φ85cm	DPU-85T
UB-105T	φ105cm	DPU-105T
UB-130T	φ130cm	DPU-130T
UB-165T	φ165cm	DPU-165T

Godox photography umbrellas UB & UB-L series provide wide coverage, low contrast, and a substantial boost in the ambient light level. The UB &UB-L series umbrellas are well-suited for portraits and group shots, providing fill light and high key effects.



UB-002
Size: 83.8cm



UB-004
Size: 83.8cm



UB-006
Size: 83.8cm



UB-L1
Black & White Large-Sized Umbrella
Size Available: 150cm & 185cm



UB-L2
Translucent Large-Sized Umbrella
Size Available: 150cm & 185cm



UB-L3
Black & Silver Large-Sized Umbrella
Size Available: 150cm & 185cm



UB-008
Size: 83.8cm



UB-009/UB-010
Size: 83.8cm



AK-R22

Designed specially to benefit Godox round head flash users, AK-R22 is a portable collapsible light modifier that offers even soft effect and increased illuminated surface. Featuring variable shapes, it adds to the fun on softening your light.

Key Features

- Even soft glow
- Increased illuminating area
- Variable light effects
- Load free on Godox round head flashes AD100PRO, AD200PRO (with H200R) and V1

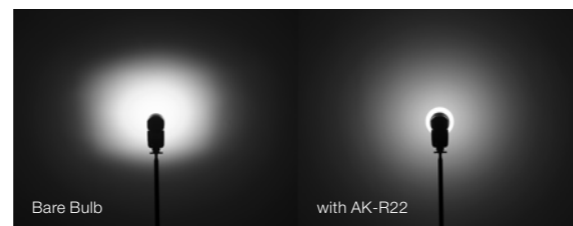
Load Free

To extend the portable experience that Godox round head flashes features such as AD100PRO, AD200PRO (with H200R) and V1, AK-R22 is engineered in just fine size and makes it load free on flashes.



Even Soft Glow

Perfect shape design grants a smooth even softening, as well as an increased illuminating area that holds your subject seem under natural light.



Variable Light Effects

The diffusion dome structure helps it possibly maintained at three positions, which can be considered as, three different light modifying angles. Try the changeable light qualities, and find your style that distinguishes your work from others!



Pro Reflector (Bowens mount)

RFT-19 30°/18cm

The reflector has a faceted and polished interior which can greatly enhance the brightness.



Pro Standard Reflector (Bowens mount)

RFT-13 65°/21cm

Delivers high output with a good spread of light, it can be used with the barndoors, honeycomb, gels, diffusers.



Pro Background Reflector (Bowens mount)

RFT-18

Used for backlighting. Delivers a graduated oval of light on the background. Included clips can be used to attach gels, filters or diffusion material and help to create special effects. An ideal light pattern especially for portrait.



35° Umbrella Reflector (Bowens mount)

RFT-03

Designed for Godox monolights and LED lights. It features a Bowens mount with a 35° beam spread.



Pro Umbrella Reflector (Bowens mount)

RFT-17 110°/15cm

It features built-in umbrella mount. When working with umbrella, it brings about wider spread of light and better outlines the subject.



Pro Grid Reflector (Bowens mount)

RFT-14 60°/18cm

Proprietary ventilation design prolongs the service life of your flash tube and gives your light better protection. Compatible with barndoors, gels, diffusers.



Oblique Background Reflector (Bowens mount)

RFT-02

Casting a graduated oval pattern when placed behind a portrait subject for even lighting of the background.



120° Wide Angle Reflector (Bowens mount)

RFT-04

A 120-degree wide beam angle and produces even light that's well-suited to portraits, beauty subjects, large groups, and spaces.

LIGHT SHAPER



Silver/White Pro Beauty Dish (Bowens mount)

BDR-S55/BDR-W55: 54cm

The beauty dish distributes light towards a focal point. The light created is between that of a direct flash and a softbox, giving the image a wrapped, contrasted look, which adds a more dramatic effect. It accentuates facial features and textures while creating beautiful shadows and catch lights. A perfect lighting shaping tool for portrait, cosmetic and fashion photographers. The interior of the beauty dish comes in two coatings: the silver and the white color. Silver interior creates more contrast and brings out more details than the white.



Beauty Dish BDR-S

Silver Interior: 42cm

Silver Beauty Dish bounces the light off a centrally positioned deflector and is directed to fill the silver reflector interior. The result is a signature soft look but with an edge of crispness (ideal for hair and makeup), that you can't get from umbrellas and softboxes. For those who want a softer look, a diffusion sock is included. The silver interior adds a little contrast and punch and increases the light's throw range. An added bonus is the natural-looking catchlights that appear in the subject's eyes. Optional accessories include a honeycomb grid to tunnel and direct the light output.



Beauty Dish BDR-W

White Interior: 42cm

White Beauty Dish bounces the light off a centrally positioned deflector and is directed to fill the white reflector interior. The result is a signature soft look but with an edge of crispness (ideal for hair and makeup), that you can't get from umbrellas and softboxes. For those who want a softer look, a diffusion sock is included. The reflector's white interior renders a soft, neutral quality of light. An added bonus is the natural-looking catchlights that appear in the subject's eyes.



Pro Snoot (Bowens mount)

SN-05: 42cm

Produces a narrow beam of light and concentrates light into a focused area while giving sharp fall-off at the same time.

LIGHT SHAPER



Snoot

SN-04

Compatibility: Godox AD300Pro & AD400Pro

Ideal for hairlighting, the Snoot narrows the light's beam spread to a round, soft-edged circle that gets smaller as you get closer to your subject. For even greater control and a smaller circle, a removable honeycomb grid is included.



Barndoor Kit

BD-04

Compatibility: Compatible with all Bowens Mount Light

A versatile kit for modifying light output from a strobe, this Barndoor Kit is designed to fit on the front of Godox standard reflector (AD-R6). Included in the kit is a four-leaf barndoor set for adjusting the shape of the light output; a honeycomb grid for producing a harder quality of light and a tighter beam; and yellow, green, blue, and red gel filters for producing a dramatic and creative wash of color.



Barndoor Kit

BD-08

Compatibility: Godox AD400Pro

The Barndoor Kit contains a 4-way barndoor set, honeycomb grid, and one each, green, blue, red, and yellow filter. The barndoors allow you to light areas of the subject you want to and keep light from areas that you don't want illuminated. The grid narrows the beam spread into a soft-edged circle which is ideal for uses like hair lighting. The color filters are provided for creative expression.



Barndoor Kit

BD-10

Compatibility: Godox AD300Pro

The Barndoor Kit provides what you need to light selectively as well as encourage creative expression. The barndoors have a 4-way design. Simply swing one or more leaves into the AD300pro's beam path to light the areas you want to have illuminated and keep light from areas you don't. Red, yellow, blue, and green filters, as well as a diffuser, are also included.

CAMERA FLASH ACCESSORIES



Softbox

Delivering soft & even light

SB1010 (10x10cm)

SB1520 (15x20cm)

SB2030 (20x30cm)



Mini Reflector

Produces natural white diffused & silver bounced lights

MRF-01 (17x14cm)



Snoot

Creating a particular focus/a spot effect

SN3030 (31X26.8cm)



Color Filter

Colorizes light and adjusts color balances

CF-07 (39X80mm), 5 pcs for each color



Flash Diffuser

Color: white, blue, yellow

For Sony F42AM, F58AM

For Nikon SB600/SB800, SB900

For Canon 430EX/430EXII, 580EX/580EXII

FD-W/FD-Y/FD-B



Honey comb

Enables light to focus on a smaller area and produces smooth & natural effects

HC-01 (86x54x12mm)



TTL Shoe Cord

3m extended length, coiled length 50cm convenient to take Metal threaded insert, tripod socket available
Support TTL flash exposure control



Speedlite Holder

For connecting a flash, flash trigger, & light stand

B/D/E holder



Lighting Holder

Designed to accept an umbrella and light for easy attachment to a light stand.

FH02



Q-type Multifunctional Clip

Q-type battery pack Clip, installing different flashes with lamp adapter.

COLLAPSIBLE REFLECTOR DISC

GODOX Collapsible Reflector Disc Kits allow you to change the reflective surface by simply zipping on a cover. The kits add a polished-looking quality of light to your photos or videos. The reflector's convenient features make it easy to use and deliver impressive results. The reversible reflector folds down to store and transport. There are 4 kits available, 2-in-1, 5-in-1, 7-in-1 & 10-in-1.

Key Features

- 1-stop diffusion panel
- Folds down to about 1/3 of its open size
- Each kit comes with its own protective, durable fabric bag
- Flexible steel spring frame, easy folding

RFT-01



RFT-05



RFT-01

Collapsible 2-in-1 Reflector Disc

Color: Gold and Silver

RFT-05

Collapsible 5-in-1 Reflector Disc

Color: Gold, Silver, Black, White, and Translucent

RFT-07

Collapsible 5-in-1 Reflector Disc

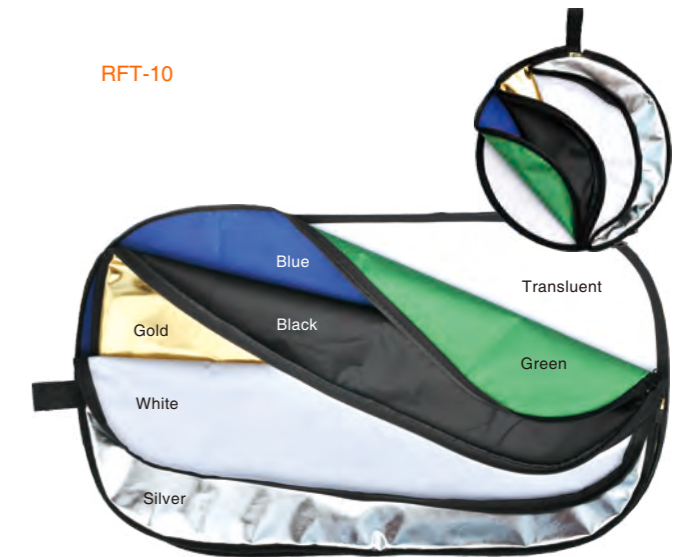
Color: Soft Gold, Silver, Black, White and Translucent

RFT-10

Collapsible 7-in-1 Reflector Disc

Color: Gold, Silver, Black, White, Translucent, Green and Blue

RFT-10



RMA-01 Reflector Mounting Arm

Color: Black

Length: 65 - 175 cm

Available Tube Diameter: 16 mm, 19 mm & 22 mm

Godox Reflector Mounting Arm can hold a wide variety of reflectors with its plastic clips. The arm mounts to a light stand via its mini grip head which allows it to be turned to obtain the required angle for the desired degree of reflectance.

FH03 Reflector Boom Holder

It allows you to attach up to two RMA-01 reflector mounting arms onto a light boom.



TABLETOP SHOOTING

Foldable Shooting Table

Foldable Shooting Table adopts unibody folding design, easy to be assembled and disassembled, ideal for large product photography, ecommerce shooting, still life, art objects, or food.

FPT-60

Size: 60*130cm Bar Material: aluminum

Key Features

- Ideal shooting table for shadowfree results
- Reversible translucent PVC shooting surface
- Base folds for quick setup and storage
- Clamps secure the surface at the tension you prefer.
- Spacious surface offers room for vertical & horizontal subjects in various sizes.
- The space under allows you to light up under the plexiglass for added options.



FTP-100

Size: 100*200cm Bar material: aluminum

Key Features

- Ideal shooting table for shadowfree results
- Reversible translucent PVC shooting surface
- 6 clamps grasp the plastic to the frame
- Assembles and breaks down easily without the need of tools
- Easy to achieve a continuous, seamless light effect with light tone gradations
- Ideal for serving to photograph ecommerce, metallic objects and beverages



TABLETOP SHOOTING

Light Tent

LSD/LST Series Light Tent

LST Series Light Tent employs three LED strips with diffusers to surround your subject with light optimized by the silver interior, making it perfect to photograph small object. Same as LST, the LSD has two LED strips with diffusers. Each tent has two shooting ports (front and top) for cameras.

Key Features

- Perfect for photographing small objects
- 2 LED Strips with Diffusers for LSD Series
- 3 LED Strips with Diffusers for LST Series
- High color rendering index (CRI > 96, TLCI ≥ 98)
- Light and portable, easy operation and simple gathering.

Available models of tents comes with 2 LED strips with diffusers:

LSD40 / LSD60 / LSD80

Size: 40*40*40cm/60*60*60cm/80*80*80cm

Available models of tents comes with 3 LED strips with diffusers:

LST40 / LST60 / LST80

Size: 40x40x40cm/60x60x60cm/80x80x80cm

DF-01

Size: 30*30*30cm, 40*40*40cm, 50*50*50cm, 60*60*60cm, 80*80*80cm, 120*120*120cm, 150*150*150cm
Color: Red, Blue, White, Black



DF-02

Size: 30*30*30cm, 40*40*40cm, 50*50*50cm, 60*60*60cm
Color: Red, Blue, White, Black



DT Series Portable Tent

DT-01 zipped portable tent

Folded Size: 60cm

Unfolded Size: 100x90x193cm

Giving your talent some privacy when shooting on location, DT-01 tent is an enclosed space in which your talent can switch outfits or fix their makeup away from public scrutiny.



DF Series Light Tent

Godox DF-01 & DF-02 are perfect for high production value product photography, effective way to shoot small products or objects in the studio or on the road.

LIGHTING STANDS & MOUNTING

LS-01

Multi-function Clamp



Multi-function Clamp can be installed on the light stand to attach small studio accessories or hang objects.

LS-02

Multi-function Clamp



LS-03

Nano Clamp



LSA-06

Wheel for Light Stand



Step-On lock design locks the wheel from rolling

LSA-07

Wheel for Light Stand



LSA-08

Flexible Arm



Flexible and strong enough to hold Shoe-Mount strobes at all angles to reduce unwanted reflections

LSA-09

Heavy Duty Flexible Arm



The two arms can be freely adjusted and locked by the knob

LSA-04

Magic Arm



LSA-05

Extension Arm



The extension arm is designed for attaching to a Convi clamp for hanging a light or a camera from a light stand or pole

LSA-13

Sky Hook



For hanging accessories

LSA-11

Laptop Tray



LSA-12

Laptop Tray



An aluminum platform to hold your laptop on a camera stand. Especially held on the laptop tray LSA-12, the cables of the laptop can be fixed on all edges of the holder with cable ties, thus preventing them being pulled out.

LSA-10

Dual Mount Arm



The dual mount arm features four separate mounting points-two heads on the sides of the arm and two heads on a 90°perpendicular angle



LIGHTING STANDS & MOUNTING

210F

Light Stand

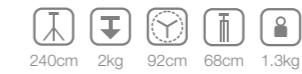


213cm 2kg 100cm 51cm 1.4kg



240F

Light Stand

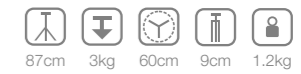


240cm 2kg 92cm 68cm 1.3kg



90F

Foldable Floor Light Stand



87cm 3kg 60cm 9cm 1.2kg



380F

Heavy Duty Light Stand

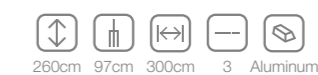


380cm 5kg 110cm 110cm 2kg



BS-04

Retractable Background Stand with Carrying Bag



260cm 97cm 300cm 3 Aluminum



LIGHTING STANDS & MOUNTING

190F

Adjustable Legs Light Stand



188cm 3kg 86/146cm 49cm 1.25kg



290F

Heavy Duty Light Stand

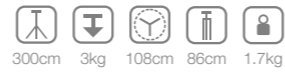


286cm 5kg 110cm 110cm 2.2kg



300F

Light Stand

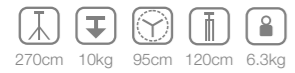


300cm 3kg 108cm 86cm 1.7kg



270CS

C-Stand with Arm (Silver)

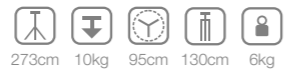


270cm 10kg 95cm 120cm 6.3kg



240CS

C-Stand with Arm (Silver)



273cm 10kg 95cm 130cm 6kg



240FS

Wheeled Light Stand



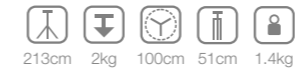
240cm 110cm 120cm



LIGHTING STANDS & MOUNTING

420LB

Light Boom Stand with Weight Bag



213cm 2kg 100cm 51cm 1.4kg



LSA-14

Boom Extension Arm



LSA-15

Boom Extension Arm



LSA-16

Boom Arm with Reflector Holder



LIGHTING STANDS & MOUNTING

LA-300

Color: Black
 Max.H.:3mm
 Min.H.:88cm
 Max.Tube:35mm
 Min.Tube:25mm
 Segments:4



LA-300

Color: Black
 Max.H.:200mm
 Min.H.:70cm
 Max.Tube:25mm
 Min.Tube:19mm
 Segments:3



LA-302

Color: Black
 Max.H.:190mm
 Min.H.:66cm
 Max.Tube:22mm
 Min.Tube:16mm
 Segments:3



LA-303

Color: Black
 Max.H.:260mm
 Min.H.:97cm
 Max.Tube:31.5mm
 Min.Tube:25.7mm
 Segments:3



CARRYING BAG



CB-03

Dimensions:104 x 19 x 15cm
 Recommended placing items: 303 light stands



CB-05

Dimensions: 72 x 24 x 24 cm
 Recommended placing items: E series studio flashes



CB-01

Dimensions: 114 x 33.5 x 24cm
 Recommended placing items: two light stands, cords, batteries, two flashes



CB-04

Dimensions: 78 x 24 x 24cm
 Recommended placing items: two light stands, cords, batteries, E series studio flash x2



CB-06

Dimensions: 94 x 34 x 25 cm
 Recommended placing items: Gemini GT or GSeries three-light kit

CARRYING BAG

CB Series



CB-09

Dimensions: 42 x 31 x 15 cm

Recommended placing items: AD600, V860III, TT685, AD360II and other speedlite



CB-20

Dimensions: 33 x 48 x 21 cm

Recommended placing items: AD300Pro dual kit



CB-12

Dimensions: 30 x 26 x 14 cm

Recommended placing items: AD600Pro



CB-56

Dimensions: 42 x 42 x 24 cm

Recommended placing items: AD200Pro Light Head System



CB-17

Dimensions: 37 x 30 x 55 cm

Recommended placing items: AD1200Pro kit