



Godox

GODOX Photo Equipment Co.,Ltd.

Factory Add: 4th Floor of Building 1, 1st to 4th Floor of Building 2, 4th Floor of Building 3, 1st to 4th Floor of Building 4, Yaochuan Industrial Zone, Tangwei Community, Fuhai Street, Bao'an District, Shenzhen 518103, China

TEL: +86-(0)755-25701197,25726373 FAX: +86-(0)755-25723423 Email: godox@godox.com | godox.com

godoxglobal GODOX Global godoxphotoequipment GODOX Photo godoxofficial

# CONTINUOUS LIGHTING

Director: Jameson Brooks

2022 | 2nd EDITION



## About US

Godox has been committed to providing consumers with professional and high quality lighting solutions in photography & videography, enabling more people to enjoy the fun of light shaping, inspiring the endless photography & videography possibility. By the vision of becoming a leading manufacturer with a world-renowned brand, we hope to continuously contribute to the development of lighting industry. At Godox, we have never stopped expanding our lineup to meet the different needs, and now we are branching out to include audio. Godox has become a solid name in the photography & videography market and we expect the same for our audio. Dream it until we make it.

Founded in 1993 as a high-tech manufacturing facility specializing in lighting and audio equipment, Godox has now become a lighting equipment expert and innovator of gears for photographers, videographers, filmmakers and more. Driven by the mission of offering great lighting and audio solutions, Godox has been always pushing the boundaries of technology, and constantly bringing professional products to the industries.

With over 1000 highly qualified staffs and 4 manufacturing facilities, factories covering more than 30,000 square meters, including an electronic products assembling center, a plastic injection and tooling center, a hardware processing center, a fabric accessory assembling center. Godox runs a diverse businesses profile with main product categories in photography, broadcasting, cinematography and videography, and audio industry. Through open collaboration and innovation, we establish industry partnership worldwide, which would allow people to share great moments with our professional lighting and audio gears anywhere in the world.

Godox benefits from creative talent pool in R&D, Design, Sales and Management teams for sustained success. Drawing on these resources, we are able to keep developing more and more professional and creative products every year to keep up to date with the market. Godox will further ramp up investment into innovation, taking innovation to the next level and constantly delivering value to the industry and society at large. We will continue working to providing products combining advanced technology with dynamic designs.

# CONTENTS



Director: Jameson Brooks

## 03 • KNOWLED Series

M600D  
M200D/M300D/M200Bi/M300Bi

## 11 • COB Lights

UI60/UL60Bi  
UL150/UL150II/UL150IIBi  
ML30/ML30Bi  
ML60/ML60Bi  
SL60W  
SL100D/SL100Bi  
SL150II/SL200II  
SL150IIBi/SL200IIBi  
SL300II/SL300IIBi  
SZ200Bi  
SZ150R (RGBWW)  
VL150/VL200/VI300

## 35 • Focusing Lights

S30  
S60/S60Bi

## 43 • Panel Lights

LED36/LED64/LED126/LED170  
LED170II/LED308II  
LED500L/LED500LR

LED1000DII/LED1000IIBi  
LEDP120C/LEDP260C  
LD75R/LD150R/LD150RS (RGBWW)

## 53 • Foldable LED Mat

FL60/FL100/FL150S/FL150R

## 55 • Hybrid Flash LED Lights

FV150/FV200  
LF308

## 59 • RGBWW Tube Lights

TL30  
TL60  
TL120

## 66 • Light Sticks

LC500R (RGBWW)  
LC500

## 69 • Streaming Lights

ES45  
LR120/LR150  
LR160/LR180  
CL10

## 76 • Waterproof Lights

WL4B  
WL8P

## 79 • Smartphone Lightings

R1 (RGBWW)  
M1 (RGBWW)  
LEDM32/LEDM150

## 82 • LITEMONS Series

LED6R/LED6Bi  
LA150D/LA150Bi/LA200D/LA200Bi

## 87 • Godox Control

APP Control  
Remote Control

## 89 • Optical Accessories

Fresnel Lens  
Spotlight Attachment

## 93 • Accessories

Projection Attachment Adapter  
Softbox Series  
Professional Light Stands  
Tripod Head Accessories  
Carrying Bags



KNOWLED

KNOWLED M600D

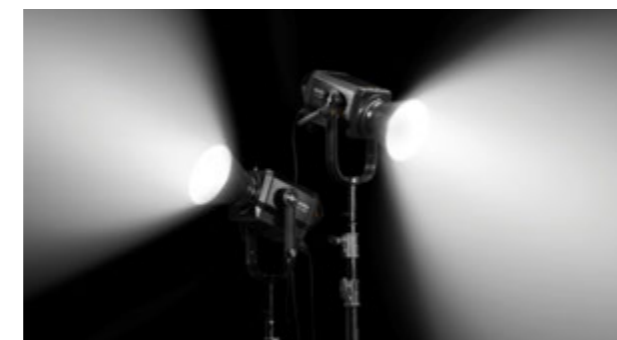
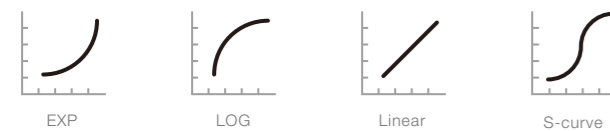


As the first knockout fixture of the Knowled series, the M600D is an evolutionary high-output LED light in daylight version, a groundbreaking combination of brightness and efficiency, and a workhorse which light up any setting you pictured in mind.

Key Features

- Bursting a blinding illumination of 15,700 lux at 9.8' equipped with the included pro reflector, the M600D is brighter than ever.
- Top-notch control box tailored to gaffers' needs featuring intuitive control, diversified powering, and robust build, and ergonomic design.
- Equipped with the Godox 10" Bowens Mount Fresnel FLS10, the M600D delivers an even brighter beam penetrating faraway and renders consistent luminescence with smooth intensity.
- Upholding the highest standard of color fidelity to render vivid colors and natural skin tones in any environment.
- Adjustable finely in 0.1% or quickly in 10% increments.
- Providing 4 optional dimming curves, each achieving a unique output behavior catering to diversified settings and applications.
- AC and DC power supply, single and dual battery powering.
- Powerful cooling system ensures remarkable rapid heat dissipation in an extremely quiet process.
- Four built-in FX effects.
- Bowens mount for wide compatibility.

Dimming Curve



When the extreme output of the M600D collaborates as a team, the power is unlimited to present a perfect light effect for any setting. Thanks to the Godox Light APP, all the complex coordination can be achieved well in hand.



Tech Specs

Mode	M600D
Power	740W (Max)
Controller Power Supply Input	AC100-240V/10A
Controller Power Supply Output	DC48V/15A
V-mount battery (optional) Input Parameter	14.8V 150Wh / 26V 260Wh
Channel	32(1-32)
Group	16(0-9, A-F)
ID	1-99, OFF
Color-Temperature	5600K
CRI	≥96
TLCI	≥97
Working Environment Temperature	-10~40°C
FX Light Effect	12 kinds within 4 types
Controlling Method	Support DMX512 , 2.4G Wireless Control, Bluetooth APP
Dimming Curve	4 types: linear/S-curve/ exponential/logarithmic
Mute Mode	YES
2.4G Wireless Control Distance	≈60m
Bluetooth Transmission Distance	≈30m
Display Screen	2.4 inches
Light Body Dimension	447.3*242.8*152.9mm
Controller Dimension	332.4*121.6*179.2mm
Light Body Weight	4.5 kg
Controller Weight	3.987 kg
Bluetooth Transmission Frequency	2402.00-2480.00MHz
Maximum Transmit Power	5dbm

Unlimited Applications



Optional Purchase

- Remote Control RC-A6
- Fixed Rope
- Connecting Cord (8m)
- Barndoors LB-02
- Fresnel Lens FLS10



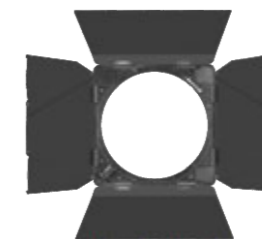


These Bowens Mount Fresnel Lenses endow your LED lights with unrivaled output and variable beam angle. Equip them with the Godox 8-leaf barndoors to shape the light with more possibilities.

**Key Features**

- The Godox Fresnel Lenses FLS8 and FLS10 amplify the output of Godox LED lights utmost by 19 times.
- Beam thrown by FLS8 can be adjusted from spot 10° to flood 40°. Beam thrown by FLS10 can be adjusted from spot 10° to flood 35°.
- The ergonomic and sturdy build of the Godox Fresnel Lenses ensures minimized light leaks and rugged durability.
- Compatible with the Godox 8-leaf barndoors to precisely cut and shape the light for more creative expressions.

**Optional Purchase**



LB-02 Barndoors



**Tech Specs**

Model	FLS10
Adjustable Beam Angle	10°-35°
Working Temperature	-10°C~40°C
Dimension	295mm*295mm*135mm
Weight	3kg



To satisfy the users' diversified needs and to help them unleash their full potential in creation, the Knowled series keeps enriching the range of professional LED lighting systems. The all-new daylight-balanced M300D & M200D and bi-color M300Bi & M200Bi will bring you all the possibilities in video production, indie filmmaking, YouTubing, and more.

### Key Features

- Delivering brightness far beyond their kinds, providing you the highest value of a 200W or 300W LED light.
- The M200D & M300D burst sharp and crisp light with absolute clarity, while the M200Bi & M300Bi offer smooth adjustment between warm and cool white.
- Upholding the highest criteria for color fidelity to render pleasant skin tones and accurate colors.
- Integrating ergonomic design and robust build quality into the all-in-one control box.
- 4 optional dimming curves including Exp, Linear, Log, and S-curve.
- 7 built-in FX effects for M200Bi&M300Bi, and 4 for M200D&M300D.
- The powerful cooling system ensures a remarkable rapid heat dissipation process barely detectable to the human ear
- Multiple control methods including Remote, Godox 2.4G wireless, DMX, and remote control.
- Selectable AC or DC power supply.
- Bowns mount for wide compatibility.



### Tech Specs

Model	M200D	M300D
Power Light	230W (Max)	330W (Max)
Head Input	48V/4.7A	48V/7A
Controller AC Power Input	100-240V ~ 50/60Hz	
Controller Power Input	DC 48V	
V-mount Battery (optional) Specifications	14.8V, 150Wh/26V, 270Wh	
Channel	32 (1 ~ 32)	
Group	16 groups (0-9, A-F)	
ID	1 ~ 99, OFF	
Color Temperature	5600K	
CRI	≥96	
TLCI	≥97	
Working Environment Temperature	-20 ~ 40 °C	
FX Light Effect	12 kinds within 4 types	
Controlling Method	Support DMX512, 2.4G Wireless Control, Bluetooth Control, Controller	
Dimming Curve	4 types: linear/S-curve/exponential/logarithmic	
Mute Mode	YES	
2.4G Wireless Control Distance	≈60m	
Bluetooth Transmission Distance	≈30m	
Display Screen	2.4 inches	
Light Body Dimension	425.1*232.3*141.2mm	
Controller Dimension	270.4*123.6*132mm	
Light Body Weight	≈3.34kg	
Controller Weight	≈2.74kg	
Bluetooth Transmission Frequency	2402.00-2480.00MHz	
Maximum Transmit Power	5dbm	

# COB Lights



## Silent LED Light

UL60/UL60Bi



Building upon the incredible fanless cooling design, UL60, UL60Bi are 60W Silent LED light sources in a portable size, with Bi-color version available you have more options to achieve full potential in sound-sensitive video application.



### Key Features

- Incredible fanless running
- Variable color temperature 2800K-6500K
- Reliable color rendering CRI 96 TLCI 97 FX effects
- Multiple control methods: Godox Light app, DMX, RC-A6 Remote Bowers mount
- Dual power methods: AC or V-mount battery

### Tech Specs

Model	UL60	UL60Bi
Power Methods	AC-powered supply 100~240V 50/60Hz 0.9A	
	V-mount battery Standard Voltage: 14.8V(optional)	
Power	60W	78W
Color Temperature	5600K±300K	2800K-6500K
With reflector	≈31000	2800K: 22400
100% brightness(LUX)		4300K: 27400
dark room, @1m		6500K: 27200
CRI	≥96	≥96
TLCI	≥97	≥97
Brightness Adjustment	0~100%	0~100%
Channel(CH)	32	32
Group(GR)	16	16
Operation Temperature	-10°C~40°C	-10~40°C
Control Methods	Godox Light APP/2.4G Wireless	
	Remote Control/DMX Control	
2.4G Wireless Transmission Distance	≈50m	
Size	Light Only: 225*119*263mm (with U-shaped yoke and bracket sleeve) Controller Box: 268*113*64mm	
Weight	Light Only: 2.38kg Controller Box: 0.94kg	Light body: 2.46kg Controller: 0.94kg





The Godox innovative fanless cooling lights have evolved to bring you an extraordinary lighting experience. Based on the silent cooling design, they were upgraded with an advanced control box, added with a bi-color option, and designed with DMX control, FX effects, and all the ergonomic details.

### Key Features

- Incredible fanless running, ensuring a crystal clear shooting environment even at maximum output.
- Come with a bi-color option, letting you adjust smoothly between warm and cool white.
- Control box with intuitive interface, versatile power supply system, and the special clamp for secure and convenient installation.
- 4 optional dimming curves including Exp, Linear, Log, and S-curve.
- Exceptional color rendering, with CRI rating of 96 and TLCI rating of 97.
- 7 built-in FX effects for UL150IIBi and 4 for UL150II.
- Multiple control methods including Remote, Godox 2.4G wireless, DMX, and remote control.
- Selectable AC or DC power supply.
- Bowens mount for wide compatibility.



The Godox innovative fanless cooling lights with the elaborate cooling system allows for efficient and reliable heat-dissipation without built-in fans, making the recording process absolutely silent.



### Tech Specs

Model	UL150II	UL150IIBi
Power	Max. 160W	Max. 180W
AC Power Input	AC100-240V ~ 50/60Hz	AC100-240V ~ 50/60Hz
DC Power Input	DC 48V	DC 48V
Light Head Input	65V/2.3A	39V/3.9A
V-mount Battery (optional) Specifications	14.8V, 150Wh/26V, 270Wh	14.8V, 150Wh/26V, 270Wh
Channel	32 (1 ~ 32)	32 (1 ~ 32)
Group	16 groups (0~9, A~F)	16 groups (0~9, A~F)
ID	1 ~ 99, OFF	1 ~ 99, OFF
Color Temperature	5600K	2800K-5600K
CRI	≥96	≈96
TLCI	≥97	≈97
Working Environment Temperature	-20 ~ 40 °C	-20 ~ 40 °C
FX Light Effect	12 kinds within 4 types	21 kinds within 7 types
Controlling Method	Support DMX512, 2.4G Wireless Control, Bluetooth Control, Controller	Support DMX512, 2.4G Wireless Control, Bluetooth Control, Controller
Dimming Curve	4 types: linear/S-curve/exponential/logarithmic	4 types: linear/S-curve/exponential/logarithmic
Mute Mode	YES	YES
Bluetooth Transmission Distance	≈30m	≈30m
2.4G Wireless Control Distance	≈60m	≈60m
Light Body Dimension	316.9*217.8*170mm	316.9*217.8*170mm
Controller Dimension	270.4*123.6*132mm	270.4*123.6*132mm
Light Body Weight	≈3.11kg	≈3.13kg
Controller Weight	≈2.66kg	≈2.79kg
Bluetooth Transmission Frequency	2402.00-2480.00MHz	2402.00-2480.00MHz
Maximum Transmit Power	5dbm	5dbm
2.4G Frequency Range	/	2412MHz - 2464.5MHz

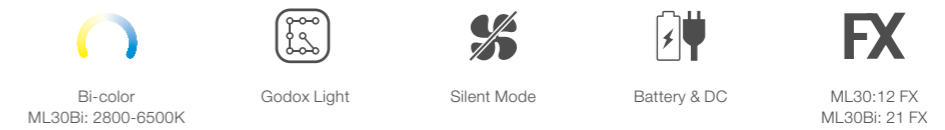
## Silent LED Light

UL150II/UL150IIBi



## Dainty LED light

ML30 / ML30Bi



ML30 and ML30Bi are the smallest COB lights in Godox lighting range, just like a portable flashlight on call at any minutes! Wherever you are, you can instantly use them to back up the lighting, power your work with minimal space taking. What surprises most is the completeness and versatility that comes with accessories system, including Diffusion Dome, Soft Tent, Softbox, offering various light effects to inspire more. Explore lots of fun in your filming journey with ML30 and ML30Bi!

### Key Features

- ML30 & ML30Bi are lightweight with palm-sized but powerful LED source.
- Battery powered option with handheld grip makes them handy gears for run and gun shoot.
- Nearly as the size of a mug cup they take up little space, ML30 & ML30Bi are perfect for lighting up in a small studio.
- ML30Bi offers smooth adjustment between 2800K and 6500K to match the ambience for a natural look.
- Scoring over 96 on CRI and 97 on TLCI, ML30 series reproduce accurate colors and thus illuminate your scene a naturally way.
- Silent mode supports creation in sound-sensitive environments
- Wireless control by Godox Light APP

### Recommend to

Videographers who shoot run and gun Content creators who work without assistants Producers who work on fast-paced projects Indie filmmakers who need mobile fill light Any locations you favor



ML-CD15 & ML-CS1625 are designed with distinctive features to elevate your lighting experience in all rounds for light softness, variable light effects, setup time and even portability.

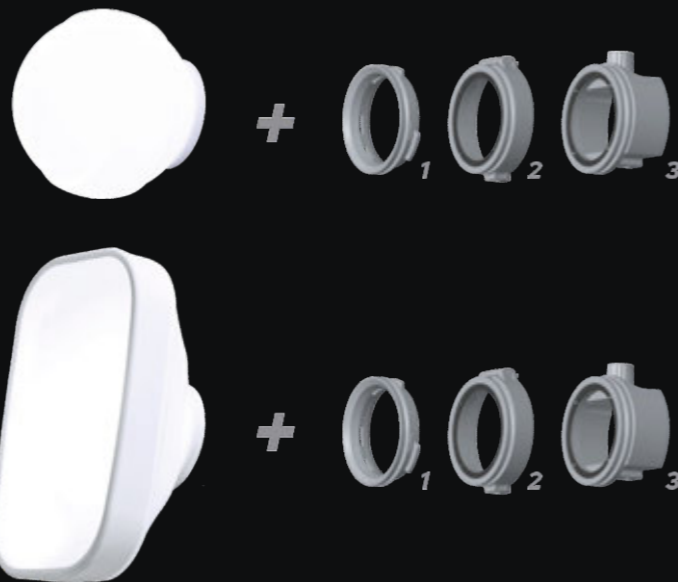


Collapsible Diffusion Dome Kit ML-CD15 (included 3 adapters)

Collapsible Soft Tent Kit ML-CS1625 (included 3 adapters)

One for Universal Pair

1+3 = ∞



- 1. Godox mount adapter to work with all Godox mount lights
- 2. Round head adapter to work with all round head speedlights like Godox V1 series
- 3. Rectangle to round head adapter to work with most rectangle speedlights

Soft material as a new choice makes them lightweight and flexible in shape, easily to be squeezed as small as possible for storage or transportation.

Collapsible design opens several ways to shape light. Use diffusion dome in fully extension for 360-degree lighting, or collapses the back to diffuse at 180 degrees, and when collapsing the front, you can change the light quality for more dimensionality.



More Accessories



Tech Specs

LED Light Adapter	ML30	ML30 Bi
Adapter	14.0V 3.4A	
Output Power	37.6W	40W
Brightness Adjusting Range	0% - 100%	
CRI(=)	96	
TLCI(=)	97	
Color Temperature	5600K	2800 - 6500K
Lighting Effects Mode	A total of 12 types in 4 categories	A total of 21 types in 7 categories
Bluetooth Transmission	15 meters	
BT Frequency Range	2402.0- 2480.0MHz	
Max. Transmitting Power	5dbm	
Working Temperature	-10~40°C	
Weight (not include handle and reflector)	587g	602g
Dimension (not include handle and reflector)	120*88*88mm	

## ML30 / ML30Bi Two Light Kits

ML30 / ML30Bi



Two-light kit of ML30 series is the way to go. Work team of any scale including individual creator could easily handle the setup work with no assistant for efficient lighting.

### ML30-K2 / ML30Bi-K2

1. ML30/ML30Bi Light	x 2
2. Reflector	x 2
3. Protect Cover	x 2
4. Grip	x 1
5. Tripod Adapter ML-TA1	x 2
6. Collapsible Soft Tent ML-CS1625	x 1
7. Collapsible Diffusion Dome ML-CD15	x 1
8. Adapter Holder	x 2
9. Battery Case BC60	x 1
10. Adapter	x 2
11. Softbox ML-SF3030	x 2
12. 5m AC Power Cable	x 2
13. 0.2m DC Power Cable	x 1
14. 1.5m DC Power Cable	x 1
15. Carry Bag CB32	x 1

## ML series Three Light Kits



Three-light kit that comprises ML series is a comprehensive set with light design possibilities. You can decide how each light is positioned in a certain relationship such as the classic three point lighting, or for more diversified effects and styles with your creativity.

### ML-Kit1

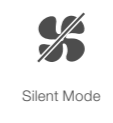
1. ML60 Light	x 1
2. ML30 Light	x 2
3. Reflector	x 3
4. Protect Cover	x 3
5. Grip	x 1
6. Tripod Adapter ML-TA1	x 3
7. Collapsible Soft Tent ML-CS1625	x 1
8. Collapsible Diffusion Dome ML-CD15	x 1
9. Softbox AD-S65S	x 1
10. Adapter Holder	x 3
11. Battery Case BC60	x 1
12. Adapter	x 3
13. Softbox ML-SF3030	x 2
14. 5m AC Power Cable	x 3
15. 0.2m DC Power Cable	x 1
16. 1.5m DC Power Cable	x 1
17. Carry Bag CB33	x 1

### ML-Kit2

1. ML60Bi Light	x 1
2. ML30Bi Light	x 2
3. Reflector	x 3
4. Protect Cover	x 3
5. Grip	x 1
6. Tripod Adapter ML-TA1	x 3
7. Collapsible Soft Tent ML-CS1625	x 1
8. Collapsible Diffusion Dome ML-CD15	x 1
9. Softbox AD-S65S	x 1
10. Adapter Holder	x 3
11. Battery Case BC60	x 1
12. Adapter	x 3
13. Softbox ML-SF3030	x 2
14. 5m AC Power Cable	x 3
15. 0.2m DC Power Cable	x 1
16. 1.5m DC Power Cable	x 1
17. Carry Bag CB33	x 1

## ML Series LED Light

ML60 / ML60Bi

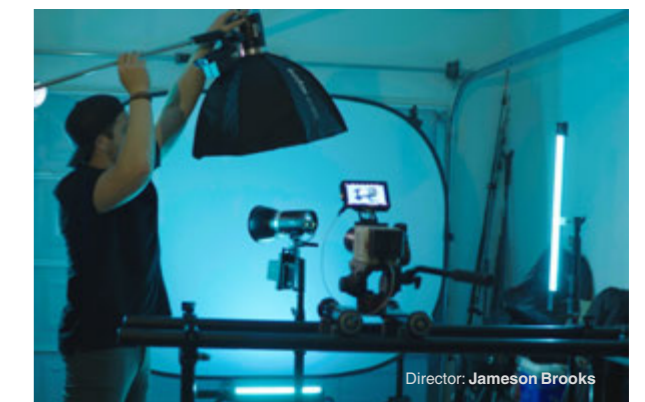


The daylight-balanced ML60 and Bi-color ML60Bi are extremely handy in any situation where you need potent and portable light. Ready for outdoors and indoors filming, ML60/ML60Bi could be powered by AC adapter or two NP-F970 batteries when AC power is unavailable. With such professional capabilities so conveniently at your command, now your creative potential awaits.

### Key Features

- Daylight-balanced ML60 and Bi-color ML60Bi are portable and easy-to-set-up light for fast-moving shootings
- With high CRI/TLCI at 96/97, ML60 & ML60Bi deliver vibrant natural light and reproduces accurate colors
- Multiple lighting effects(8 Lighting FX for ML60, 7 Lighting FX for ML60Bi) support you to achieve creative lighting
- Compatible with all Godox-mount modifiers, ML60 & ML60Bi can access to Bowens mount accessories when using with a S2 bracket, opening up more creative possibilities
- Freely switch on the silent mode to eliminate unwanted noise, providing creators with a highly silent environment for video productions and improving their efficiency
- Multi Control: On-board, RC-A6 Remote, Godox Light APP (ML60Bi only)

### Multiple Control Methods



Accessories



Tech Specs

LED Light	ML60	ML60Bi
Adapter	Output 16.8V, 4.2A	
Power	Max.60W	
Channel	32	
Group	16(A, B, C, D, E,F,0-9)	
Color Temperature	5600K±200K	2800-6500K
Dimming Range	0%~100%	
100% Brightness(LUX) with included Reflector	≈69000(@0.5m)	≈10100(@1m)
Color Accuracy	CRI 96, TLCI 97	
Operating Temperature	14 to 104°F / -10 to 40°C	
Control Methods	Wireless Remote	Bluetooth, Wi-Fi
Package Weight	0.77 kg	
Box Dimensions (LxWxH)	14.5 x 8.8 x 8.8 cm	

A Run & Gun Filmmaking Setup With ML60



Featuring high brightness and color accuracy, the 5600K daylight-balanced SL60W is versatile constant light source well-suited for video work. The intuitive design of SL60W incorporates a rear LCD monitor and dial for 10-100% dimming adjustment. Also, to help ensure consistent and continuous use, a heatsink and built-in fan are featured to help regulate temperature along with a specialized temperature control function to protect the LED itself.

Key Features

- Daylight-balanced light has a color temperature of 5600K.
- The 60W LED offers a high output along with color-accurate rendering and dimming control from 10-100%.
- Bowens S-mount is compatible with a variety of light modifiers and accessories, such as the included reflector for producing a broad, even, and neutral light quality.
- Integrated heatsink, built-in fan, and temperature control function help keep the light running cool for safe and consistent use. The temperature of the fixture itself can also be monitored, in Fahrenheit or Celsius, on the rear LCD.
- Runs on 100-240 VAC power for use worldwide.



SL60W



Tech Specs

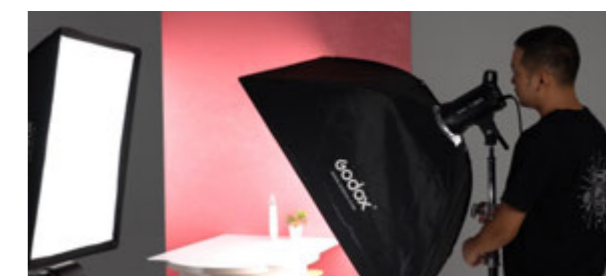
LED Light	SL60W
Power Supply	AC 100-240V 50/60Hz
Power	60W
Color Temperature	5600K±200K
Color Accuracy Standard	CRI ≥93 TLCI≥95 R9≥80
Cooling System	Fan/Passive Combo
Dimming	Yes, 10 to 100%
Channel	16
Group	6 groups(A B C D E F)
100% Illuminance (LUX)	4100(1m)
100% Luminous Flux	4500
Operation Temperature	-10-50°C
Safe Temperature	≤70°C
Dimensions	23x24x14cm (Not included the Lamp Cover)
Net Weight	Approx.1.61kg

SL60W Two Light Kit

- SL60W x 2
- 304 light stand x2
- Softbox SB-NBG 60\*90CM x2
- CB-05 x2
- RC-A5 Remote Control x1



For those pursuing the best power out of limited budget, Godox has SL100D and SL100Bi for you. Compact unit with high brightness, SL100 twins work well for small space lighting. Daylight SL100D as basic solution while the Bi-color SL100Bi for more creativity. Bowens mount makes it easier to choose accessories. Want to gain popularity as a Youtuber, live streamer, content creator or commercial producer, Lighting with SL100 will be a good start.



2800K-6500K  
(SL100Bi)

0-100%  
Brightness

**FX**

SL100Bi: 11  
SL100D: 8

Godox Light  
App Control

Key Features

- Dependable 5600K SL100D and variable (2800-6500K) SL100Bi feature a high CRI/TLCI rating of 96/97 that translates to advanced accuracy in color rendering.
- SL100D offers Lightning 1/2/3, Flash, Conference, Paparazzi, Television, and Broken Bulb, and based on that SL100Bi has 3 additional light effects: Candle, Fire, Firework.
- With its compact design, you can freely use it in home or small studio settings.
- Bowens front accessory mount allows use of Godox modifiers and those of the many manufacturers that use this popular mount.
- Dual dials and clearly marked buttons offer intuitive user interface
- The SL100D/SL100Bi functions can be adjusted on the fixture, with a smartphone using the *Godox Light App*, or with an optional wireless remote.

Tech Specs

LED Light	SL100D	SL100Bi
Power Supply	AC100V-240V (50/60Hz)	
Output Power	100w	
Channel	32	
Group	16(0-9/A B C D E F)	
ID	OFF/1-99	
Color Temperature	5600K	2800K-6500K
Light Adjustment Range	0%~100%	
100% Illuminance(LUX) (with standard reflector,testing distance,1m)	≈32100	
CRI	≥96	
TLCI	≥97	
Temperature of Working Environment	-10° - 40°	
Light Effect Mode	8	11
Control Method	Smartphone APP/2.4G Wireless	
Bluetooth Transmission Distance	≈30m	
2.4G Wireless Transmission Distance	≈30m	
Beam Angle	120°	
Dimension	243*205*127mm	

SL100D-K2

- SL100D x2
- 304 Light Stand x2
- SB-BW-6090 Softbox x2
- RC-A6 Remote Control x1
- CB-04 Carrying Bag x1



SL100Bi-K2

- SL100Bi x2
- 304 Light Stand x2
- SB-BW-6090 Softbox x2
- RC-A6 Remote Control x1
- CB-04 Carrying Bag x1



SL150II



SL200II



In the power of 150Ws & 200Ws, 5600K daylight-balanced SL150II & SL200II LED light are more professional, high-performance, and durable while maintaining the best features from their predecessor. SL150II & SL200II LED light are suitable for broadcasting, cinematography, online streaming, and other video applications.



Key Features

- Portable LED monolite-style light source outputs up to 150W/200W of power
- With a CRI/TLCl rating of 96/97, it produces highly accurate color renditions and delivers pristine and natural results, greatly saving your post-production time and money.
- The stunning heat dissipation system and ultra quiet design allow SL II keeping at a negligible noise while working.
- Featuring 8 Lighting FX, you simulate the lighting effect of flash, storm, TV and a broken bulb, and so on, bring you more creative possibilities in photography and video shooting.
- The 360° rotatable U-shaped yoke offers excellent flexibility and can be used with most light stands
- SL II is widely compatible with various Bowens mount accessories, catering to your different requirements on light shaping.

Tech Specs

Model	SL150II	SL 200II
Power Supply	AC100V-240V (50/60Hz)	
Max Power	150W	200W
Color Temperature	5600+200K	
100% Light Brightness(LUX, 1M)	≈58000	≈74000
CRI ≈	96	
TLCl≈	97	
Light Brightness Range	0%-100%	
Operation Temperature	-10°C ~ 40°C	
Channel	32	
Group	16(A, B, C, D, E, F, 0-9)	
Dimensions (Standard reflector is not included)	34x20x16cm	36.7x20x16cm
Net Weight	2.95Kg	3.33Kg

Bi-Color



SL150IIBi

SL200IIBi



Bi-color  
2800K-6500K



0 - 100% Brightness  
Adjustment

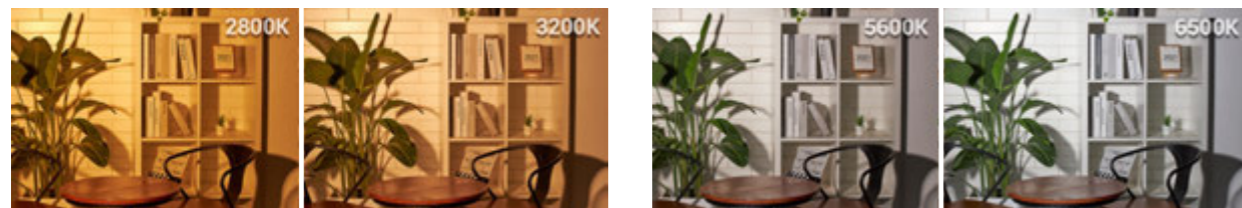


Scenes of Light  
Effect: 9 FX



Silent Mode

SL150IIBi and SL200IIBi got all the excellent quality and performance of SLII series lights with the added flexibility of expansive color temperature range, bringing users a more creative and flexible experience. SL150IIBi/SL200IIBi is ideal companion for online streaming, broadcasting, and other video applications.



Key Features

- Variable color temperature (2800 to 6500K) allows you to match other fixtures, meet the ambient light, or just follow your creative impulses
- You can turn off the fan for sound-sensitive situations
- Nine built-in special effects including Flash 1, Flash 2, Storm 1, Storm 2, TV, Broken Bulb, Fire, and Fireworks
- The Bowens front accessory mount allows use of a large list of light shapers
- Wireless control: 32 channels, 16 groups with the optional RC-A6 remote

Tech Specs

Model	SL150IIBi	SL 200IIBi
Power Supply	AC100V - 240V (50/60Hz)	
Output Power	150W	200W
Color Temperature Range	2800K - 6500K	
100% brightness (LUX @1m)	≈30000 (Max.)	39200 (Max.)
CRI	≈96	
TLCI	≈97	
Brightness Adjustment	0% - 100%	
Operation Temperature	-10 °C - 40°C	
Channel	32	
Group	16 (A,B,C,D,E,F,0-9)	
Size(without reflector)	34*20*16cm	36.5* 20*16cm
Weight( without reflector and lamp cover)	≈3.07Kg	≈3.25Kg







SL300II

SL300II Bi

SL300II/SL300II Bi continues the excellent quality and performance of SL II series while providing a stronger output, which further unleashes your creative potential and fulfills the needs for more applications.



Key Features

- Amazing 99300 lux output at 1 meter (SL300II with a standard reflector)
- High CRI/TLCl rating ≈ 96/97
- Silent mode especially suitable for sound-sensitive applications
- SL300II : 8 FX light effects including Flash 1, Flash 2, Flash 3, Storm 1, Storm 2, Storm 3, TV and broken bulb ; SL300II Bi : Flash 1, Flash 2, Storm 1, Storm 2, TV, broken bulb, candle, Fire and Firework
- Wireless control : 32 channels, 16 groups with the optional RC-A6 remote
- Rotatable U-shaped yoke offers excellent flexibility
- Compatible with any Bowens-mount modifiers

Illuminance Data

Color Temperature/ Brightness	Testing Conditions	Illuminance Unit	Distance		
			1m	2m	3m
5600K 100% brightness	bare bulb	lux	12900	3320	1650
		fc	1200	309	153
	with reflector	lux	99300	20300	8820
		fc	9130	1890	820

Tech Specs

LED Video Light	SL300II	SL300IIBi
Power Supply	AC100V-240V(50/60Hz)	AC100V-240V(50/60Hz)
Max Power	320W	320W
Color Temperature	5600±200K	2800-6500K
CRI≈	96	96
TLCl≈	97	97
Light Brightness Range	0%-100%	0%-100%
Operation Temperature	-10°C~40°C	-10°C~40°C
Channel	32	32
Group	16(A, B, C, D, E, F, 0-9)	16(A, B, C, D, E, F, 0-9)
ID	01-99	01-99
Dimension (not include a standard reflector)	362*194*311mm	407*199*316mm
Net Weight	3.62Kg	3.78Kg

Zoomable & Bi Color



SZ200Bi

- Bi-color 2800K-6500K
- 20°-65° beam angles
- FX 22 effects
- Silent Mode
- USB firmware upgrade
- 2.4G/APP/DMX Control Methods

SZ200Bi is a zoomable Bi-color LED light, designed for video production, filming, online streaming, and photography. Combining impressive high output, reliable color accuracy, wide color temperature ranged and equipped with Bowens-mount, this light can fit your various lighting needs and give you ultimate versatility and creative freedom.



Zoom Easily,  
Film Efficiently

Key Features

- Adjusting the beam angle from 20 degrees to 65 degrees with its zoomable knob, you spend less time changing light fixtures and adjusting distance, and more time capturing the perfect light for your production.
- With high CRI and TLCl scores of 97 and 96, the SZ200Bi delivers vibrant natural light and reproduces accurate colors.
- The wide color temperature range of 2800 to 6500K lets you quickly match the color of existing lighting without worrying about the gels.
- For a wide variety of lighting scenarios, the SZ200Bi features 8 preset tunable cinematic lighting effects including flash, lightning, broken bulb, TV, candle, fire, fireworks, and SOS.
- Four optional control methods (On-Board Control, DMX Control, RC-A6 Remote, and Godox Light app) allow you to adjust and control your lights in various scenarios to makes your work flow easier.
- Turn off the fan to eliminate unwanted noise so you can focus more on the content and not worry that the light will cause any noise interference.

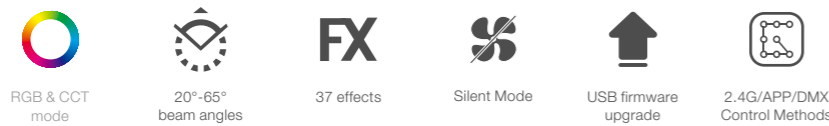
Tech Specs

Model	SZ200Bi
Power Supply	AC100V - 240V(50/60Hz)
Output Power	200W
Channel	32
Group	16(A,B,C,D,E,F,0-9)
Color Temperature Range	2800K-6500K
Brightness Range	0%-100%
100% Brightness(LUX@1m)	≈32500
CRI	≈97
TLCl	≈96
Operation Temperature	-10°C - 40°C
FX Effects Mode	8 preset tunable cinematic lighting effects
Mode	Bi-color mode / FX effects mode
Zooming	Beam angle from 20° to 65°
Control Method	Godox Light APP/2.4G wireless / DMX control
Silent Mode	
2.4G Wireless Control Distance	50m
Display	Color screen
Size	336*198.6*165mm
Net Weight	2.54Kg

Zoomable & Bi color & RGB



SZ150R



SZ150R, a RGB Bi-color Zoomable COB LED light, is designed for video production, broadcast, and photography. It is especially versatile for making a short film with limited crew, which can boost your work efficiency greatly and allow you freely enjoy the joy of creation. Its Bowens mount can access to its included reflector and a variety of accessories to get your desired light effects easily. Now let SZ150R power you to explore more boundlessly!

Key Features

- Boasting the ultimate in color control, the SZ150R has an RGB Mode with Hue, Saturation and Intensity control plus Magenta/Green control that gives the shooter access to multi custom colors.
- CCT Mode offers variable color temperature with a range of 2800 to 6500 or anywhere in between. The light's high CRI/TLCI ratings of 97/96 are your assurance of superior accuracy in the depiction of colors.
- You can "Zoom" from a tight 20 degrees to a wide 65 degrees just with a twist of a knob to suit your subject without moving the light.
- The SZ150R has 13 built-in special effects including RGB Cycle, Flash, Laser, Lightning, Broken Bulb, TV, Candle, Fire, Fireworks, Police Car, Fire Truck, Ambulance and SOS.
- SZ150R silent mode supports users to focus more on the content and never trouble from any noise interference by light fixture.

Tech Specs

LED Light	SZ150R
Power Supply	AC100V-240V(50/60HZ)
Power	150W
Channel	32
Group	16(A, B, C, D, E, F, 0-9)
Color Temperature Range	2800K - 6500K
Brightness Range	0%-100%
RGB Hue	0-360°
100% Illuminance(LUX)	Central point
(darkroom, 1m distance with included reflector)	Max. diffused light of focal length ≈19000 Min. diffused light of focal length ≈26000
CRI (≈)	97
TLCI (≈)	96
Working Environment	
Temperature	-10°C~ 40°C
Light Effects Modes	37
Mode	Bicolor mode/HSI mode/situational mode
Zooming	Beam Angle 20° - 65°
Control Method	Smartphone APP/2.4G wireless/ DMX intelligent control
Wireless Control Distance	≈50m (with optional remote control RC-R9)
Silent Mode	Yes
Display	Color Display
Dimension	336*198.6*165mm
Net Weight	2.65kg (not include reflector and protect cover)



The Green/Magenta control supports you to fine tuning skin tones and mixing/matching light sources.



Godox VL Series are lightweight and compact light source, with three versions in different power consumption for choice: VL300, VL200 and VL150. With high performance and accurate color rendition, VL Series are ideal light source for newborn photography, still life photography, portrait, studio lighting, interview lighting, video recording and filming.

Key Features

- The 5600K daylight-balanced VL series lights feature a CRI rating of 96 and TLCI rating of 95
- With strong power, stable light source and adjustable light brightness from 0% to 100%.
- Achieving wireless control by 433MHz grouping system (6 groups & 16 channels) with optional remote control and smartphone APP through Bluetooth.
- Powered by V-port Lithium battery or DC power supply with wide application.
- Adapter and controller are separate from the main light body, which offers more convenient operation and better heat dissipation.
- Small and portable light body provided with easy light arrangement.
- With U-type bracket to adjust different angles easily.
- Bowens-mount enables to install various of accessories.
- Included a carrying bag to pack the whole set.

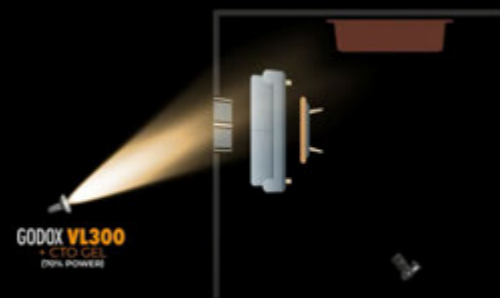


Tech Specs

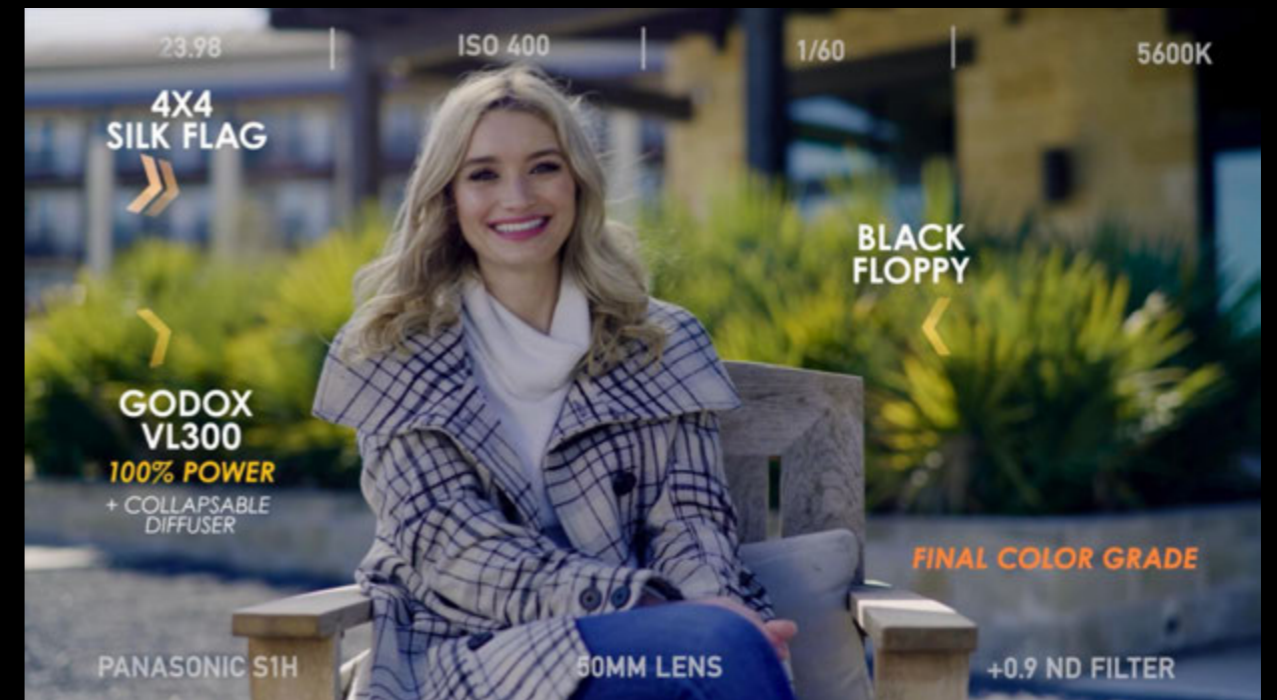
VL series	VL150	VL200	VL300
Powered by DC Power	AC100V-240V(50/60Hz)	AC100V-240V(50/60Hz)	AC100V-240V(50/60Hz)
	2A(DC16.8V,10A)	3.9A(DC33V 7A)	4.3A(DC33V 10A)
Powered by Lithium Battery	V Mount Lithium Battery(sold separately)		
Power Consumption(maximum)	150W	200W	300W
Color Temperature	5600K±200K		
100% Light Brightness (LUX,1M)	With Reflector 61000	75000	77000
	Bare Bulb 6400	7800	10800
CRI≈	96	96	96
TLCI≈	95	95	95
Light Brightness Range	0%-100%	0%-100%	0%-100%
Operation Temperature	-10°C~40°C	-10°C~40°C	-10°C~40°C
Channel	16	16	16
Group	6(A,B,C,D,E,F)	6(A,B,C,D,E,F)	6(A,B,C,D,E,F)
Size	30x14x18cm	30x14x18cm	34x14x18cm
Net Weight: (Light Body)	1.97Kg	2.23Kg	2.64Kg
(Controller)	0.86Kg	1.19Kg	1.26Kg
(Adapter)	0.72Kg	0.96Kg	1.14Kg



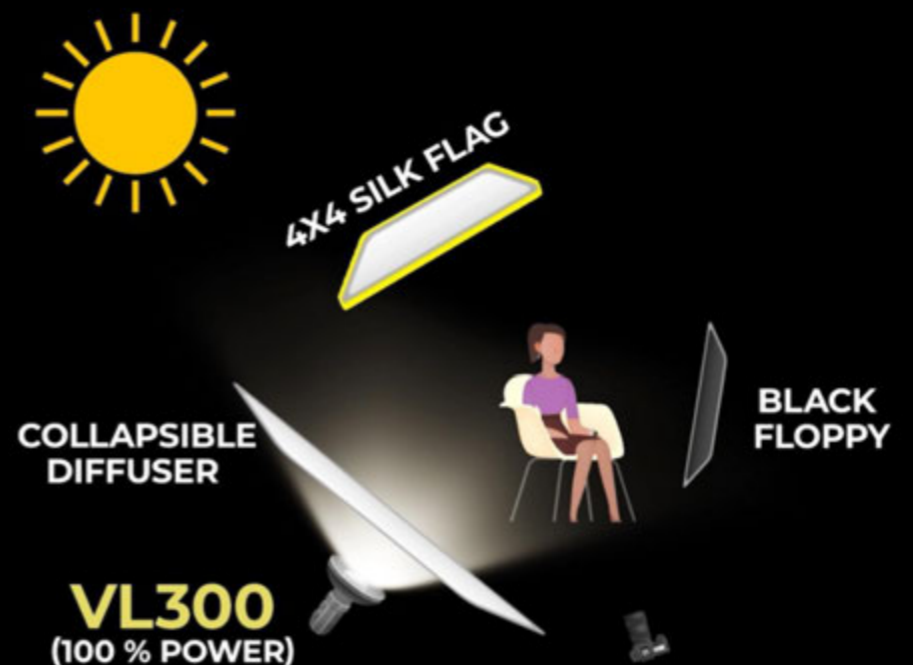
2 Looks in 1 Location



Director: Jameson Brooks



Lighting for Exterior Daylight with One Light





TRAIN STATION  
Godox

WAY OUT **EXIT**

SHINE

# FOCUSING LIGHTS

Photographer: Luke Edmonson, David Edmonson



S30

The focusing LED light S30 is a suitable light source for video lighting, interviewing, headshot, still life photography, portrait, wedding photography, and pre-wedding photography, and also a good choice for enthusiasts who want create lighting.

Even and Smooth Beam (with projection attachment)



### Key Features

#### Outstanding Lighting Effects

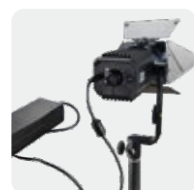
- An aspheric optical lens gives S30 with a CRI and TLCI rating of 96+, S60 CRI/TLCI ratings of 96+/97+ and guarantees natural, pristine color in any application.

#### Precise Control of Light Coverage

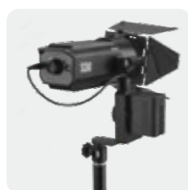
- With a beam angle from 6 to 55 degrees, you can get the output spread size you need by adjusting the rotary knob on the back. An optional projecting lens makes it useful lighting details.

#### Multiple Options of Power Supply

- Three ways of power supply offer great convenience for S30, portability and wide application



Power supplied by DC adapter (15V/4A)



Power supplied by li-ion battery (Sony NP-F970/F950/F930) (7.4V)



Power supplied by power bank with a USB cable(5V/2A)

### Tech Specs

LED Light	S30
Power Supply	DC adapter 15V/4A Power 30W Li-ion battery(Sony NP-F970/F950/F930) 7.4V Power 10W Power bank with a USB cable 5V/2A Power 10W
Output Power	30W
Color Temperature	5600K±150K
Beam Angle	6°-55°
100% Illuminance (LUX)1m, dark room	Flood(Central Area)≈ 2800 Spot (Central Area)≈ 11300
CRI	96
TLCI	97
Brightness Range	10% - 100%
Channel, Group	-
Operation Temperature	-10~50°C
Net Weight (≈)	907 g
Dimension (≈)	215*108*100mm



S60



S60Bi

Beam angle from 6 to 55 degrees, you can get the ideal spotlight size by adjusting the rotary knob on the back. With a projecting lens (optional) light can be focused at its extreme. This controllability makes S60 series perfect for lightening any details.

### Key Features

- Beam angle from 6 to 55 degrees, light where you want
- Variable Color Temperature
- High color rendering CRI/TLCI rating of 96+/97+
- Lighting FX
- Silent mode
- Control by Godox Light app, remote RC-A6 or DMX

### More Features of S60 Series

#### Multiple Control Methods

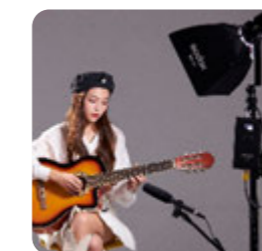
- With a built-in Bluetooth system, the S60 can be remotely adjusted for the setting on the user-friendly "Godox Light" app. It also supports optional RC-A6 wireless remote control.



DMX Godox Light RC-A6

#### Silent Mode

- In the silent mode, the fan is turned off to avoid any acoustic disturbance for sound sensitive environments. (light intensity is decreased by half when the fan is turned off)



### Illuminance Data of S60Bi

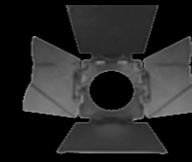
Color Temperature	Testing Condition	Illuminance Data			
		1m	2m	3m	
2800K	flood	lux	3010	761	352
		fc	280	70.7	32.7
	spot	lux	22400	5920	2740
		fc	2090	550	254
3200K	flood	lux	3710	950	436
		fc	345	88.2	40.5
	spot	lux	28000	7430	3410
		fc	2600	690	317
4300K	flood	lux	4310	1100	505
		fc	400	102	47
	spot	lux	32700	8690	3970
		fc	3030	807	369
5600K	flood	lux	4340	1110	509
		fc	403	103	47.3
	spot	lux	32900	8770	4000
		fc	3060	815	372
6500K	flood	lux	4290	1100	504
		fc	398	102	46.8
	spot	lux	33200	8690	3960
		fc	3090	808	368



Tech Specs

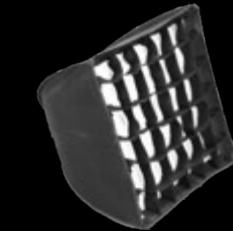
Model No.	S60Bi	S60
Power Supply	AC Power Supply 100~240V 50/60HZ 0.9A MAX V-port battery Standard voltage: 14.8V (optional)	AC: 100~240V 50/60Hz 0.9A V-port battery standard voltage 14.8V(optional)
Output Power	77W (Max)	60W
Color Temperature	2800-6500K	5600K±300K
100% Illuminance(LUX) (1m, darkroom) (=)		Flood(Central Area) 3200 Spot(Central Area) 4000
CRI	≈96	≥96
TLCI	≈97	≥97
Brightness Range	0~100%	0~100%
Channel(CH)	32 (1 to 32)	32 channels(1 to 32); 16(A to F/ 0 to 9)
Group (GR)	16 (A to F/ 0 to 9)	
Beam Angle	6°-55°	
Working Environment Temperature	-10~40°C	-10~40°C
Control Method	Smartphone APP/2.4G wireless /remote/ control/DMX control	
2.4G	50m	
Wireless Transmission Distance(=)		
Dimension (=)	Light body: 264*107*100mm Controller: 233*112*61mm	Light body 264*107*100mm Controller 268*113*64mm
New weight(=)	Light body: 1.36kg Controller: 1kg	Light body 1.36kg; Controller 0.94kg

Abundant Accessories



SA-08 Barndoor Set

Barndoor set: to precisely control the light beam as required. There are small clips on the plate for clipping diffusion fabric or gels on.



SA-30 / SA-20 Softbox

Offers soft and even light effects



SA-05 Scrim set

To reduce the light intensity and control the light graduation.



SA-07 Scrim set

To reduce the light intensity and control the light graduation.



Projection attachment: project a highly focused and controlled beam of light. This attachment is what enables you to get the utmost out of creativity of Focusing light series for it is specially designed for fitting a vast range of light shaping accessories.



SA-P Projection Attachment (included a SA-01 85mm Lens)



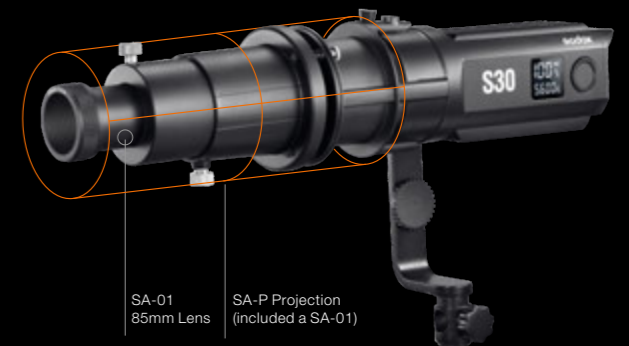
SA-01 85mm Lens



SA-02 60mm Wide-angle Lens



SA-03 150mm Telephoto Lens



SA-01 85mm Lens

SA-P Projection (included a SA-01)



**SA-06 Iris Diaphragm**

By pushing its lever the range of light beam can be gradually adjusted, from a small spot that could be captured by your hand to the original size.



**SA-09 GOBO set**

By inserting the Gobo into the projection attachment, different patterns can be projected to form various background. You can even have the gobo customized to design your own pattern.



**SA-11C / SA-11T Colors gels**

To color the light for unique atmosphere.



S30/S60 focusing light series is born for the diversity of light designing. With all the light shaping accessories, you can tailor the light into whatever patterns you like by bringing into your own creative thoughts.



**S30-D Three-light kit**

Model: S30-D

- SA-08 Barndoor Set x3
- 213B Light Stand x3
- SA-P Projection Attachment x3  
(included a SA-01 85mm lens)
- SA-30 Softbox x3
- SA-05 Scrim Set x3
- SA-06 Iris Diaphragm x1
- SA-07 Framing Shutter x2
- SA-09 GOBO Set x1
- SA-10 GOBO Holder x1
- SA-11C Color Filters of Color Effects Set x1
- SA-11T Color Filters of Color Temperature Adjustment Set x1
- CB14 Carrying Bag for Light Stand x1
- CB15 Carrying Bag for Kit x1



**Kit for S60/S60Bi**

S60-D/S60Bi-K3 Three-Light Kit

- Light Head x1
- Wrench x1
- Power Cable x1
- Connect Cable x1
- Controller Box x1
- SA-30 Softbox x2
- SA-05 Scrim Set x1
- SA-06 Iris Diaphragm x1
- SA-07 Framing Shutter x1
- SA-08 Barndoor Set x3
- SA-09 GOBO Set x1
- SA-10 GOBO Holder x1
- SA-11C Color filters of Color Effects Set x1
- SA-11T Color Filters of Color Temperature Adjustment Set x1
- SA-P Projection Attachment x1  
(included a SA-01 85mm lens)
- CB14 Carrying Bag for Light Stand x1
- RC-A6 Remote Control x1
- 213B Light Stand x3
- CB21 Carrying Case for Kit x1



# Panel Lights





LED36



LED64



LED126



LED170



LED36 & LED64 are ideal lightweight continuous lighting source. It is excellent for macrophotography, product shooting, and video recording, etc. This portable light provides high brightness and accurate color temperature. You can flexibly control the light brightness by using the dimmer and by interlocking multiple lights.

Key Features

- Multiple high-quality LED bulbs
- Interlocking design for multi-lamp array
- Steplessly adjustable with a dimmer
- Fits all brands of cameras & camcorders
- Use AA batteries (LED64 can use DC power)

Tech Specs

Model	LED36	LED64
Bulb Qty	36	64
Batteries	2*AA	4*AA
Battery Life (with alkaline batteries)	>1.5 hours	
DC Power Supply	Not available	5V
Lithium Camera or Camcorder Battery	Not available	
Power	<1.3W	<4.5W
Color Temperature	5500-6500K	
Brightness	>260Lux (0.5m)	>1000Lux (0.5m)
Interlocking	Yes	
Working Temperature	-10°C-45°C	
Dimension	70*89*38mm	100*85*35mm
Net Weight	80g	110g

LED126 & LED170 have more beads to offer brighter illumination to fit different shooting environments. It comes with a diffusion filter and a yellow filter, and also supports multiple power supply modes. You can flexibly control the light brightness by using the dimmer and change the illumination direction by using the angle adjusting knobs.

Key Features

- Over 100 LED bulbs in wide-size panel
- AA batteries/lithium battery (not included) or DC power
- Steplessly adjusts light brightness with the dimmer
- Flexibly changes LED light angle
- Fits almost any DSLR cameras and camcorders

Tech Specs

Model	LED126	LED170
Bulb Qty	126	170
Batteries	6*AA	8*AA
Battery Life (with alkaline batteries)	Approx 1 hour	
DC Power Supply	6V-9V	6V-12V
Lithium Camera or Camcorder Battery	Sony NP-F970	
Power	<7.5W	<10W
Color Temperature	5500-6500K	
Brightness	>2200Lux (0.5m)	>2700Lux (0.5m)
Interlocking	No	
Working Temperature	-10°C-45°C	
Dimension	143*96.5*42.5mm	172*108.6*42.5mm
Net Weight	280g	348g



LED170II



LED308II

The Daylight Balanced 10W On-Camera LED Light LED170II features 170 daylight-balanced LED bulbs that provide a bright output in a lightweight package. It comes with a diffusion filter and a yellow filter, and also supports multiple power supply modes. You can flexibly control the light brightness by using the dimmer and change the illumination direction by using the angle adjusting knobs.

Key Features

- Over 100 LED bulbs in wide-size panel
- AA batteries/lithium battery (not included) or DC supply
- Steplessly adjusts light brightness with the dimmer
- Flexibly changes LED light angle
- Fits almost any DSLR cameras and camcorders

Tech Specs

Model	LED170II
LED Beads Quantity	170
Battery	8*AA
DC Power Supply	6-12V
Power (Max.)	<10W
Brightness	>2700Lux (0.5m)
Lithium Battery	Sony NP-F970 model camera or camcorder lithium-ion battery
Color Temperature	5500-6500K
Brightness Control	Steplessly
Battery Life (with alkaline batteries)	Approx. 1 hour
Color Filters	Includes a diffusion filter and a yellow filter
Operation Temperature	-10°C-45°C
Dimension	172mm*108.6mm*42.5mm
Net weight	350g

Featured with wireless group control and brightness adjustment with high lighting, LED308II series fits various professional shooting scenarios: wedding, journalistic and object video photography. The light is dimmable from 100 to 10% brightness, and a built-in LCD screen shows color temperature, brightness, battery power, and wireless channel.

Key Features

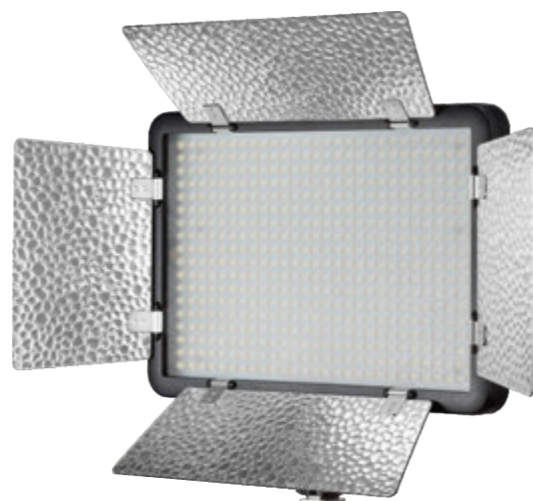
- 308-LED-bulbs panel is lithium-ion or DC powered
- Wireless 433MHz grouping system (6 groups & 16 channels)
- Wirelessly adjust brightness or color temperature with optional remote control
- Three Versions to offer multiple choices
- Include a portable handle and a mini stand
- Large-sized LCD panel. Settings auto saved. Quickly change panel angle.
- Fits almost any cameras and camcorders

Tech Specs

LED 308 Video Light	LED308W II Daylight Version	LED308C II Bicolor Version
Lithium Battery	7.4V Lithium Battery	(SONY NP-F970 model lithium battery) (sold separately)
DC Power Supply	6.5-12V	
Channel	16	
Group	6 groups(A, B, C, D, E, F)	
Power	Max. 21W	
Color Temperature	5600K±300K	3300K-5600K ±300K
Brightness (LUX)	860 (1m)	860(1m/4100K) / 430(1m/3300K)
Light Brightness Range	10%-100%	3300K/5600K :10%-100% 3400K-5500K :25%-100%
LED Beads Quantity	308	5600K:154 3300K:154
Operation Temperature	-10°C-45°C	
Dimension	180mm*185mm*40mm (not with the Handle)	
Net Weight	400g	



LED500L



LED500LR

LED500L/LED500LR video lights offer high light brightness with great portability. Three models are available: Daylight Version (5600K), Tungsten Version (5600K) and Bicolor Version (3300K-5600K). What's more, LED500LR has four reflectors while LED500L doesn't.

Key Features

- Premium LED beads and large LCD panel
- Wireless adjustment and control with optional remote control
- Lithium battery or DC charged
- Light, portable and flexible
- LED500LR has four reflectors to gain better light effects.

Tech Specs

Video Light	LED500L / LED500LR	LED500LC / LED500LRC
	Daylight Version	Bicolor Version
Lithium Battery	SONY: NP-F970*2(lithium battery)(sold separately)	
DC Power Supply	13~16.8V	
Channel	16	
Group	6 groups(A,B,C,D,E,F)	
Power	Max. 32W	
Color Temperature	5600K±300K	3300K-5600K ±300K
Brightness(LUX)	2900(1m)	2900 (1m/4200K) 1450 (1m/3300K) 1450 (1m/5600K)
Light Brightness Range	10%~100%	3300K/5600K:10%~100% 3400K~5500K:25%~100%
LED Beads Quantity	504	5600K:252 3300K:252
Operation Temperature	-10~50°C	
Dimension	250mm*170mm*45mm	
Net Weight	510g(LED500L) / 620g(LED500LR)	

Battery Adapter Plate

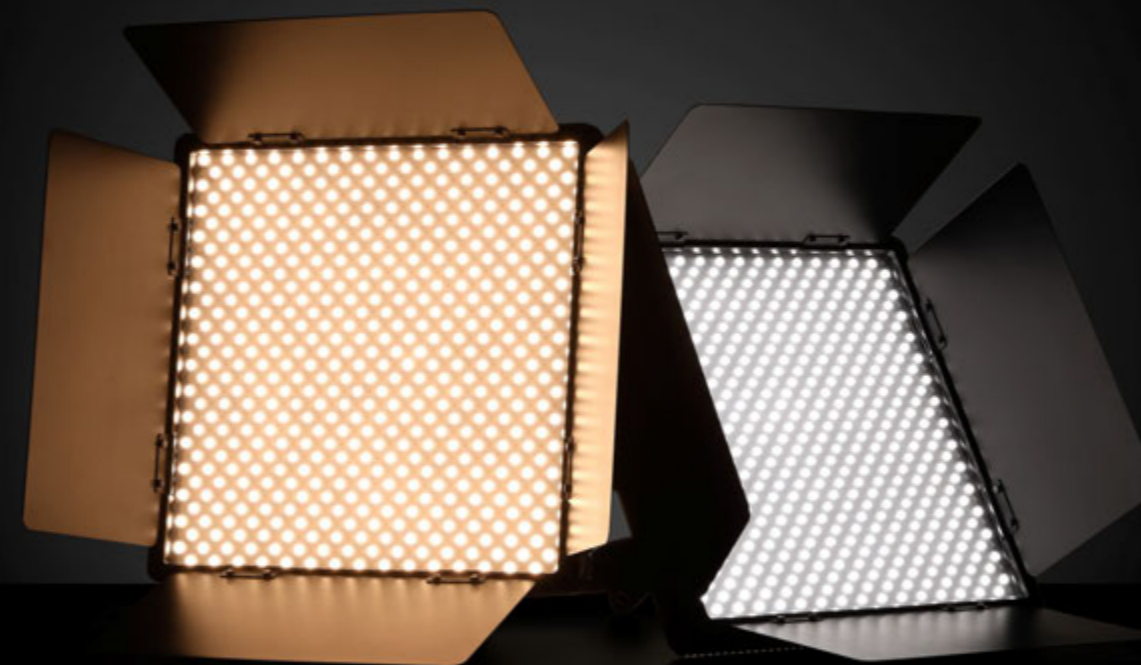
BH-P1 is a useful battery adapter plate for installing VBG6 Panasonic lithium battery. It is suitable for most of LED video lights, such as LED 126, LED 170, LED 308, LED500L, LED500LR etc.



BH-P1



(1)Power Switch (2)Select Dial + SET Button (3)CH/GR Button  
(4)DC Power Jack (5)Lithium Battery Compartment (6)LCD Panel (White in Blue)



LED1000Bi II  
Bi-color version

LED1000D II  
Daylight version

LED1000D II/LED1000Bi II video lights are excellent for product shooting, photojournalistic and video recording, etc. It provides a wide spectrum, beautifully soft and even illumination for photography.

Key Features

- Premium LED bulbs and wide screen offer high brightness
- Three models create various light effects
- Three control options to wirelessly adjust brightness or color temperature
- Lithium battery or DC charged



\* Yellow and blue filters only for LED1000D II

Accurate Color

With a CRI/TLCI rating of 96/98, it produces highly accurate color renditions and delivers pristine and natural results.



Flexible and Versatile

The four reflective barndoors enables to shape and adjust the light for optimal result and protect the bulbs while in storage. Thanks to the yoke, the light can be easily adjust the angle.



Three control options

Control the individual unit or groups either locally on-board control with LCD Panel, wirelessly with the RC-A5II remote control(optional), or via the DMX control system. You are free to control the brightness from 100% to 0% and color temperature (of LED1000Bi II) from 3300K to 5600K and so on in any situation.



(optional)

Tech Specs

LED Video Light	LED1000D II (daylight version)	LED1000Bi II (Bi-color version)
Lithium Battery	14.8V Lithium battery (BP-L model)(sold separately)	
DC Power Supply	13~16.8V	
Channel	16	
Group	6 (A, B, C, D, E, F)	
Power	Max. 70W	
Color Temperature	5600K±300K	3300K-5600K±300K
100% Brightness(Lux)≈	5400 @1m	4800 @1m/4200K 2200 @1m/3300K 2600 @1m/5600K
CRI≈	96	
TLCI≈	98	
Dimming Range	0%~100%	
LED Beads Quantity	1024	5600K: 512 3300K: 512
Operation Temperature	-10~40	
Dimension	430*460*100mm	
Net Weight	2.51Kg	
Remote Control	RC-A5 II	
Power Supply	3.0V(AAA*2)(not included)	
Wireless Frequency	433MHz	
Distance (Open Area)	20m	
Channel	16	
Group	6 (A, B, C, D, E, F)	
Standby Time	More than one year	
Operation Temperature	-10~40	
Dimension	120*38*15mm	
Net Weight	30g	



LEDP120C

LEDP260C

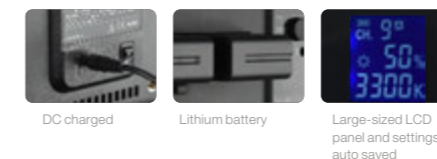
The LEDP120C and LEDP260C video light are excellent for macro photography, wedding shooting, product shooting, photo journalistic and video recording, etc. The lightweight and portable light provides high brightness, convenient operation and accurate color temperature.

Key Features

- High-quality LED blubs
- Using lithium battery with great portability
- Soft and even illumination
- Included with a L-type bracket
- Fits almost any cameras and camcorders



- With the wide spectrum, soft light and accurate color temperature
- Wireless grouping system (6 groups & 16 channels)
- Adjustable light brightness and color temperature
- Lithium battery or DC charged
- Large-sized LCD panel and settings auto saved
- Include a detachable handle and AC adapter



Tech Specs

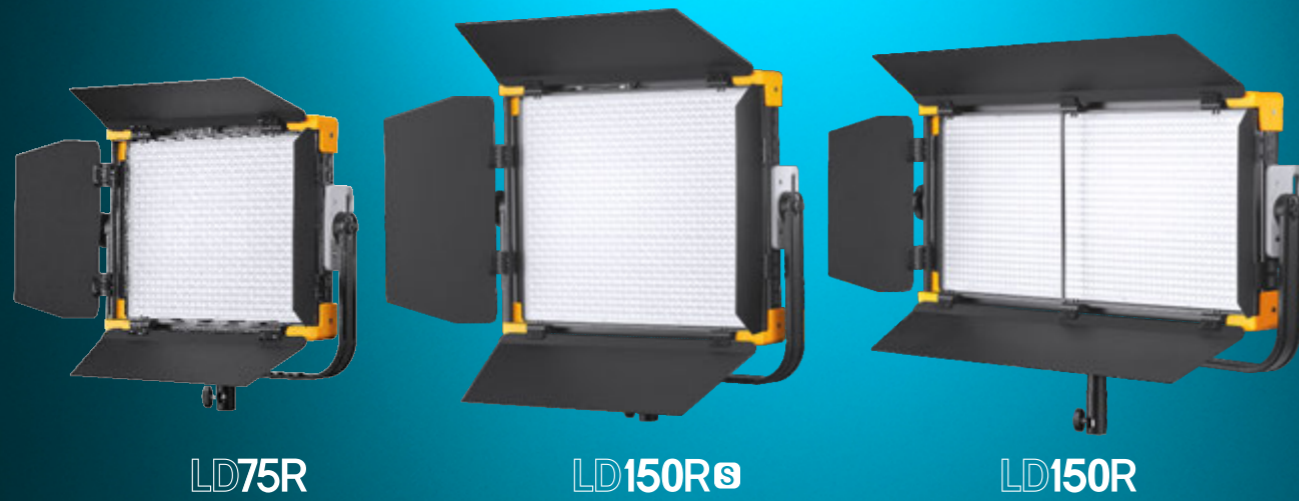
LED Light	LEDP120C	LEDP260C
Power Supply	7.4V Lithium Battery (NP-F970 model lithium battery)(optional)	7.4V Lithium Battery (NP-F970 model lithium battery)(optional) DC Power Supply: 13-16.8V
Power	Max. 12W	Max. 30W
Channel	/	16
Group	/	6(A, B, C, D, E, F)
Color Temperature	3300K-5600K±300K	
Brightness(LUX)	580 (0.5m/4500K) 630 (0.5m/3300K) 680 (0.5m/5600K)	2050 (0.5m/4500K) 2050 (0.5m/3300K) 2200 (0.5m/5600K)
Dimming Range	10%~100%	
CRI	≥95	≥95
TLCI	≥95	≥94
Operating Temperature	-10~40°C	
Package Weight	220g	917g
Box Dimensions (LxWxH)	175mm*130mm*17mm	360mm*240mm*27mm (not with the L-type Bracket)

Remote Control	RC-A5
Power Supply	3.0V(AAA*2)(not include)
Wireless Frequency	433MHz
Distance (emptiness)	20m
Channel	16
Group	6 groups (A/B/C/D/E/F)
Standby Time	Over one year
Operation Temperature	-10~50°C
Dimension	120mm*38mm*15mm
Net weight	30g



# RGBWW Panel Light

LD75R/LD150Rs/LD150R



LD75R

LD150Rs

LD150R



RGB / CCT / HSI Mode



R-Gel / L-Gel Mode



Godox Light APP



0-100% Brightness



FX 39 Light effects



Battery & AC Power Supply

The new LD Series feature softness to light your scene a pretty way. Precise color control makes it easy to lift the ambiance of everything in the frame. With battery-powered option, you have more freedom to create for mobile projects. Full features with great flexibility, LD series seem to an all-inclusive solution.

## Key Features

- DMX, Manual, Wireless Phone Control
- Silent, RGBWW Mode
- CCT: 2500-8500K, CRI/TLCI: 96/97
- L-Gel & R-Gel, 14 Special Effects
- 32 Channels, 16 Groups
- 0-100% Dimming, Color Presets



# RGBWW Panel Light

LD75R/LD150Rs/LD150R



Barndoor



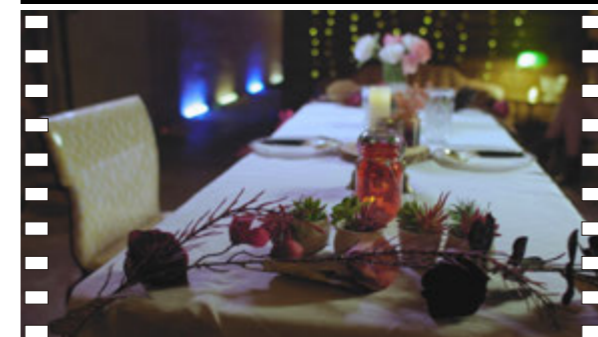
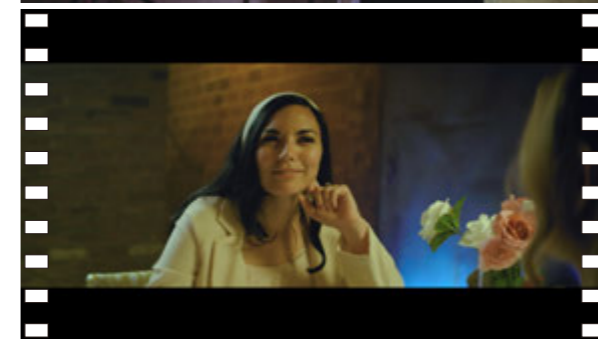
Softbox  
LD-SG75R for LD75R  
LD-SG150R for LD150R  
LD-SG150RS for LD150RS



Honeycomb  
HC-75 for LD75R  
HC-150 for LD150R  
HC-150S for LD150RS

## Shape Light to Meet Your Vision

For any creation, shaping and controlling light is important. Softbox, honeycomb, barndoor compatible with the panel light give you simple but effective options to get softer, controllable light.



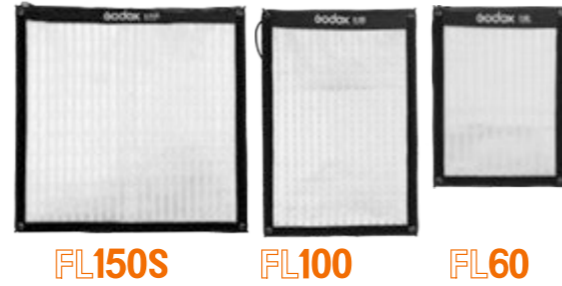
Director: Jameson Brooks

## Tech Specs

Model	LD75R	LD150R	LD150RS
output Power	75W	150W	150W
DC Adapter Power Supply	16.8V, 7.0A	24.0V, 8.33A	24.0V, 8.33A
V-port Battery (optional)	14.8V	26V	26V
Color Temperature	2500K-8500K		
Channel (CH)	32: 1-32		
Group(GR)	16 : A,B,C,D,E,F/0-9		
ID	99 : OFF/01 - 99		
FX Mode	14 Categories (39 kinds)		
Brightness Range	0%~ 100%		
Tone Range	-50~ 0~+50		
Hue Range	0 - 360°		
Saturation Range	0% - 100%		
Beam Angle	60°		
Silent Mode	Yes		
100% Illuminance (LuX) (darkroom, 1-meter distance)	Max.=9320	Max.=17500	Max.=18500
CRI	≥96		
TLCI	≥97		
Control Method	Smartphone APP/2.4G wireless remote control DMX control / operate panel		
Bluetooth Transmission	≈30m		
Distance			
BT Frequency Range	2402.0 - 2480.0MHz		
Max. Transmitting Power	5dbm		
2.4G Wireless Transmission	≈50m		
Distance			
Working Temperature	-10~40°C		
Dimension	LD75R: 441*410*107.5mm	LD150R: 748*430*107.5mm	LD150Rs: 542*513*107.5mm
Net Weight	≈3.5Kg	≈6.3kg	≈5.1kg



FL150R



Use in combination



Color Temperature 3300K-5600K

Brightness (10%~100%)



Godox FL Series Flexible LED Lights are lightweight, portable, flexible and pliable as pieces of cloth to shape what you want.

### Key Features

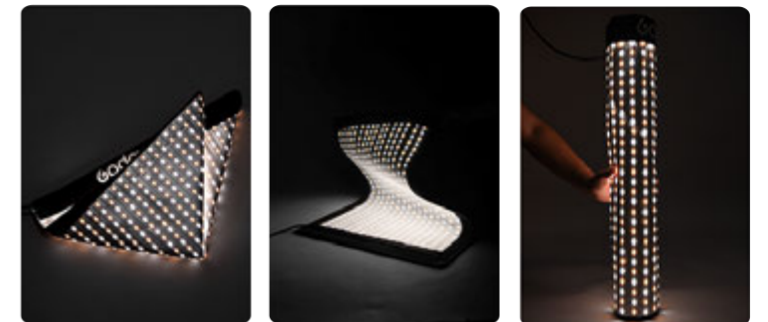
- Soft and even light effects & adjustable light brightness and color temperature.
- Compact and portable body with strong power. Suitable for lighting in small and narrow space.
- Can be folded to different shapes and used together to achieve creative light effects.
- Achieving wireless control by 433MHz grouping system (6 groups & 16 channels) with optional remote control and smartphone APP through Bluetooth.
- Powered by Lithium battery or DC power supply.
- With easy operation, great portability and compatibility.

Work with the accessories to achieve a softer lighting effect.



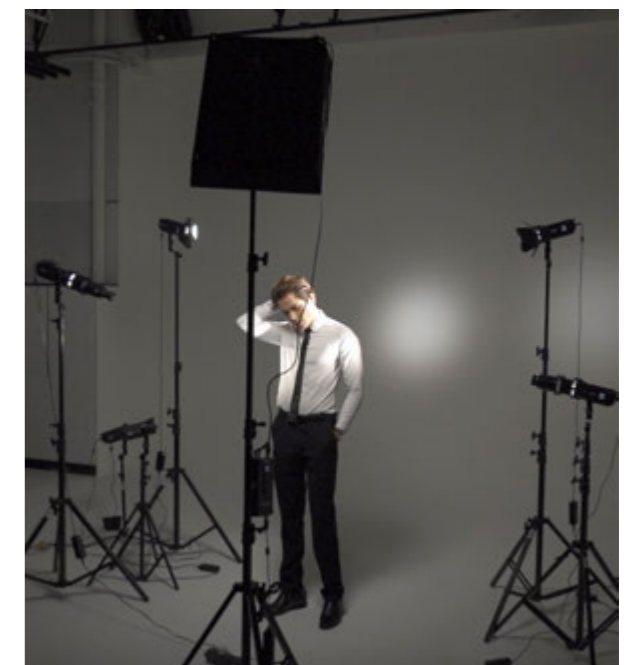
### Easy to shape what you want

Providing a light source for all kinds of videorecording or photography in a narrow space!



### Tech Specs

Flexible LED Light	FL150S / FL150R	FL100	FL60
Power Supply	AC100V-240V(50/60Hz)		
DC Power Supply	3.5A(DC16.8V,10A)	3A(DC16.8V,7A)	2.5A(DC16.8V,4.2A)
Lithium Battery	V-port battery		
Power	150W	100W	60W
Color Temperature	3300±200K / 5600±200K		
100% Light			
Brightness (LUX)	<4300 Lux	<3300 Lux	<1800 Lux
(darkroom, 1m)			
TLCI	≥98		
CRI	>96		
Light Brightness Range	10%~100%		
Operation Temperature	-10°C~45°C		
Channel	16		
Group	6 group (A,B,C, D,E,F)		
Wireless Remote	<30m		
Control Distance			
Bluetooth Distance	<50m		
Dimension	60*60cm	30*120cm	40*60cm 30*45cm
Net Weight (only the main light body)	3.9kg	4.37kg	3.47kg 2.87kg





# Hybrid Flash LED Lights

Photographer: Aries Tao



### Flash Mode



The brightness of flash is four times of LED's



Over 10 continuous flashes per second in 1/2 power



1/8000s HSS



Godox wireless X system

### LED Mode



Soft light effects



0-100% Precise brightness adjustment



8 FX special effects

High Speed Sync Flash and Continuous Light FV series add flash functions based on the traditional LED light. FV series can be served as a flash, as well as an LED light. With strong power, abundant functions and 8 FX special effects modes, it can achieve creative shooting easily. It fits for all kinds of shooting occasions, especially for children shooting due to its soft LED light source and strong power flash.

### Key Features

#### As a Flash

- The flash's light brightness is four times of LED light's, which increase the freezing ability of instantaneous action.
- Supports 1/8000s high-speed sync function. Over 10 continuous flashes per second and 8 continuous flashes per second in high-speed sync mode in 1/2 power output.
- Built-in Godox 2.4G wireless receiver (X system), compatible with Canon, Nikon, Sony, Fuji, Panasonic, Olympus and Pentax cameras.
- 1/16-1/1 or 6.0-10.0 power output displayed in the form of fractions or decimal.
- Adjust modeling lamp's light brightness from 5% to 100%.

#### As a LED Light

- With soft light effects and high light brightness which can be precisely adjusted from 0% to 100%.
- With 8 FX special effects mode to simulate various of shooting scene and achieve creative shooting.

#### More Design Details

- Support wireless control (16 groups and 32 channels) with optional remote control.
- With U-type bracket to adjust different angles easily.
- Bowens-mount enables to install various of accessories conveniently.
- Large and clear LCD display.
- Excellent heat dissipation.



Built-in Godox 2.4G wireless receiver (X system), compatible with Canon, Nikon, Sony, Fuji, Panasonic, Olympus and Pentax cameras.



Light Effect Contrast in LED Mode(100%) and Flash Mode(1/1): (ISO:400 Aperture:F8)



### Tech Specs

High Speed Sync Flash LED Light	FV150	FV200
Power Supply	100~240V(50/60Hz)	
Power	150W	200W
Color Temperature	5600±200K	
100% Light Brightness (LUX, 1M)	≈12000	≈18000
CRI(=)	96	
TLCI(=)	96	
Light Brightness Range of LED Mode	0%-100%	
Operation Temperature	-10°~45°C	
Power Output	1/16- 1/1 or 6.0-10.0	
Channel	32	
Group	16(A,B,C,D,E,F,0-9)	
Dimension (not included a standard reflector)	34x20*16cm	36.7x20*16cm
Net Weight	3.13Kg	3.33Kg



### Flash Mode

The brightness of flash is 3 times of LED's

1/8-1/1 or 7.0-10.0 power output

Godox wireless X system

### LED Mode

Soft light effects

0-100% Precise brightness adjustment

Li-ion & AC Power Supply

Featured with wireless group control and brightness adjustment with high lighting, LF308 fits various professional shooting occasions: wedding, journalistic and object video photography.

### Key Features

- As a flash**
- The light is 3 times brighter when used as flash than when used as a led light.
  - 1/8-1/1 or 7.0-10.0 power output displayed in the form of fractions or decimal.
  - The modeling lamp's light brightness can be adjusted from 0% to 100%.
- As a LED light**
- 308 beads offers high brightness and stable light source.
  - 0%-100% precise brightness adjustment.
  - For the daylight version, the color temperature is fixed at 5600K. For the bicolor version, the color temperature is adjustable between 3300K and 5600K.

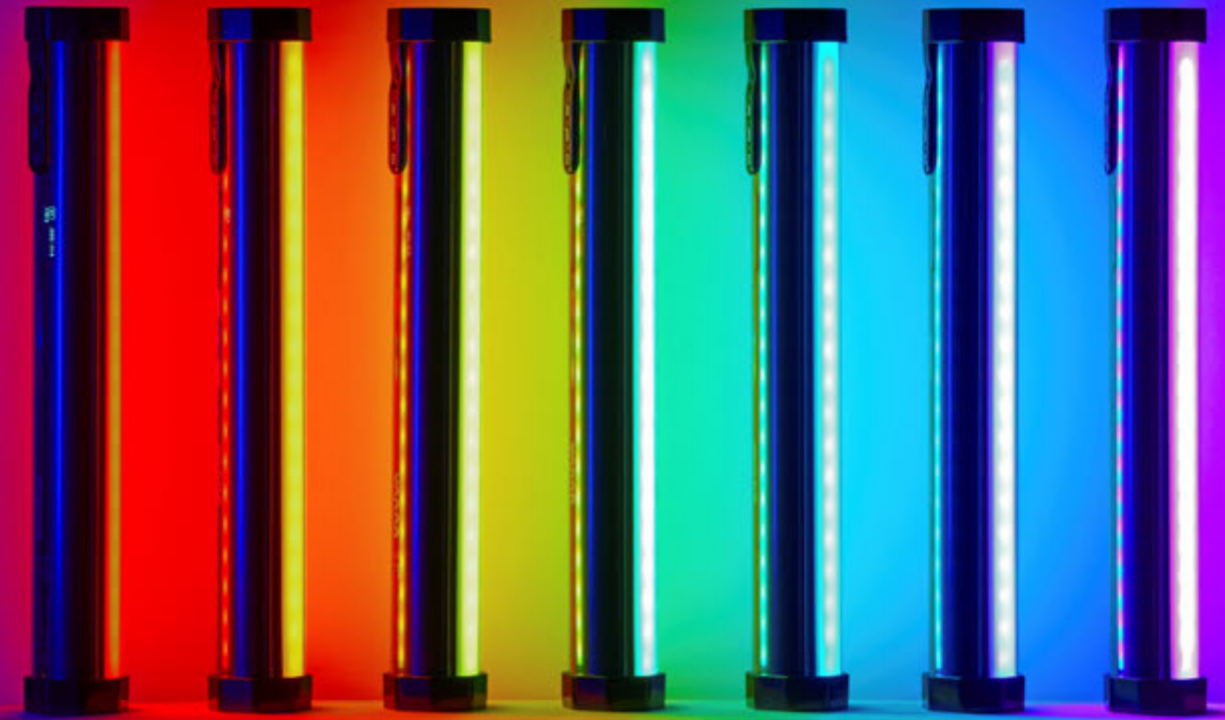
### Tech Specs

LED Flash Light	LF308D Daylight Version	LF308Bi Bicolor Version
Lithium Battery	7.4V Lithium Battery (SONY NP-F970 model lithium battery) (sold separately)	
DC Power Supply	6.5-12V 4A	
Channel	32	
Group	6 groups(A, B, C, D, E, F)	
Power	Max. 18W	
Color Temperature	5600K±300K	3300K-5600K ±300K
Brightness (LUX)	LUX≤1300 (1 m)	LUX≤1200 (1 m)
Light Brightness Range	10%~100%	
Power Output Control	OF, 7.0-10(1/8-1/1)	
Triggering Method	Sync cord, test button, 2.4G wireless, Bluetooth	
LED Beads	308	308 (5600K:154; 3300K:154)
Quantity	308 (5600K:154; 3300K:154)	
Operation Temperature	-10~50 °C	
Dimension	180mm*185mm*40mm (not with the Handle)	
Net Weight	400g	

# RGBWW Tube Lights

## RGBWW Tube Light

TL30



A new addition to Godox tube light family, TL30. Featuring tube shape in light weight, it is portable and easy to use. Small as it is, great potential to expect. Tons of colors in control for dynamic content creating. Accessories like various couplers, waterproof bag, grid inspire extensive possibilities for the form, effect and even applicable environment of this light. You will enjoy the infinity that TL30 could be to enrich every shot.

### Key Features

- RGBWW, CCT, HSI modes
- 36,000 Colors
- 13 Tunable effects
- Advanced Green/Magenta adjustment
- Bluetooth control with Godox Light App
- USB-C charging port
- Integrated lithium-ion battery, 3.6V/2900mAh/10.7Wh
- Embedded magnetic mounts

### Abundant functions for various scenarios



TL-M8 8-light coupler

TL-M2 2-light coupler

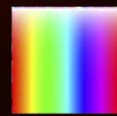
TL-W30 Waterproof bag

TL-G30 Grid



# RGBWW Tube Light

TL60



RGBWW

Adding additional two LED whites



HSI

Fully control for up to 36000 colors



Gel

40 built-in R-Gel and L-Gel filters



CCT

Wide color temperature from 2700K-6500K



FX

39 FX effects

Godox Tube light TL60 it's designed to give users the freedom to inspire their creativity for endless range of shooting scenarios, like film making, video and photography in anywhere you go. With multiple color modes, CRI 96 and TLCI 98, ultra smart control system, and flexible tube design, TL 60 enables variety lighting setups to represent impressive performance on highly explore creativity, carry out high efficiency shooting and produce memorable magic moments.

## Key Features

- Color: 2700-6500K, CRI/TLCI: 96/98
- RGBWW/ HSI Control, 40 Built-In Filters
- Battery Has 2-Hour Runtime
- Phone, DMX, 2.4 GHz Wireless Control
- Dims 0-100%, 98-164' Wireless Range
- 32 Channels, 6 Groups
- Power Adapter, DC Cable, Carry Bag



Remote Godox Light On-board Control DMX

# RGBWW Tube Light

TL30/TL60



No matter you want to put it into different figures, hang on the wall, hold by hand or any other creative usage. It will satisfy with any kinds of shooting scenarios in anywhere. With Godox Light APP, you can freely control multi lights wirelessly.

## Tech Specs

LED Light	TL60	TL30
Internal Lithium Battery	14.4V/2600mAh	3.6V/2900mAh/10.7Wh
Adapter	Output 20V 2.4A	5V/2A(optional)
Power	Max.18W	Max.8W
Color Temperature	2700K-6500K	2700K-6500K
Light Brightness Range	0%-100%	0%-100%
RGB Color Gamut	0-360°	0-360°
100% Brightness(LUX)≈	1500	740
CRI(≈)	96	97
TLCI(≈)	98	99
Duration(continuous output in 100% full power in 2700K for 6500K)	Approx 2 hours	Approx. 60 minutes
Control Method	Smartphone APP(for both Android and IOS system)/2.4G wireless/ DMX control	Smartphone APP /
Control Distance	Bluetooth Wireless≈30m 2.4G Wireless≈50(with optional RC-R9 remote control)	Bluetooth Wireless ≈ 30m /
Operating Temperature	-10 to 40°C	-10 to 40°C
Dimension	φ48*750mm	φ42*300mm
Net Weight	0.73kg	0.3kg

## TL30-K2 Two Light Kit for TL30

- Tube Light TL30 x2
- Wrist Strap x2
- Metal Plates x6
- TL-G30 Grid x2
- USB-C Power Cable x2
- TL-C2 Retaining Clip x2
- TL-M2 2-light Coupler x1
- Adhesive Hook & Loop x6
- TL-W30 Waterproof Bag x2
- CB23 Carry Case x1



## TL30-K4 Four Light Kit for TL30

- Tube Light TL30 x4
- Wrist Strap x4
- TL-G30 Grid x2
- Metal Plates x12
- USB-C Power Cable x4
- TL-C2 Retaining Clip x4
- TL-M2 2-light coupler x4
- TL-M8 8-light coupler x1
- TL-W30 Waterproof Bag x2
- Adhesive Hook & Loop x12
- CB22 Carry Case x1



## TL60-K2 Four Light Kit for TL60

- Tube Light TL60 x2
- Retaining Clip x2
- Power Adapter x2
- Remote (RC-R9) x1
- DC Power Cable x2
- RJ45 Cable x2
- Wirerope x4
- Fixed base x2
- Toggle clip x2
- CB39 Carrying Bag x1



## TL60-K4 Four Light Kit for TL60

- Tube Light TL60 x4
- Retaining Clip x4
- Power Adapter x4
- Remote (RC-R9) x1
- DC Power Cable x4
- RJ45 Cable x4
- Wirerope x8
- Fixed base x4
- Toggle clip x4
- CB40 Carrying Bag x1



Struggle with a shot that fails to display your imagination, or desire for more power to ignite the viewers? You can always find better answers on lights. TL120 gives freedom shaping the visual impacts in any forms, try these stylish tube-shaped lights to draw the scene you want! They can be everywhere, in any forms! To throw some as glaring background practicals, to sketch beautiful rims by single set, or even create powerful arrays by stacking tubes, you may spend a day investigating the limitless ways of how they show up.

## Key Features

- 117cm long, light wider with more power
- Simple elegant tube shape makes them perfect for structuring spatial depth on screen
- Full feature settings on RGB, HIS, CCT, Gel and FX, by one tap on the App you create exciting collision of colors, adding rich dynamics and visual power to build your scene to a rousing climax
- TL120 can be easily controlled on Godox Light App, RC-R9 remote, or DMX controller
- Clear reading screen and easy on-board function setting, TL120 ensures a smooth usage as well as speedy adjusting
- Inbuilt battery lasts more than 150 minutes even at full power output



Tech Specs

LED Light	TL120
Built-in Lithium Battery	14.4V/5200mAh/74.88Wh
Adapter	20V/4.8A
Output Power	30W
Channel	32
Group	6 (A B C D E F)
Color Temperature Range	2700K-6500K
Light Brightness Range	0%-100%
RGB Color Gamut	0 ~ 360°
CRI (≈)	96
TLCI (≈)	98
Duration(continuous output in 100% full power in 2700K or 6500K)	150 minutes
Control Method	Smartphone APP/2.4G wireless/DMX control
Bluetooth Wireless Control Distance	≈30m
2.4G Wireless Control Distance	≈50m (with optional RC-R9 remote control)
Operation Temperature	-10~40 °C
Dimension	48*1170MM
Net Weight	1.27kg

CCT	Illumination Unit	1m	2m	3m
2800K	lux	659	202	101
	fc	61.2	18.8	9.4
3200K	lux	610	187	93.3
	fc	56.7	17.4	8.7
4300K	lux	666	205	102
	fc	61.9	19	9.5
5600K	lux	685	210	104
	fc	63.7	19.5	9.7
6500K	lux	769	234	117
	fc	71.3	21.7	10.9



Optional Purchase

- Grid TL-G120
- Adapter Holder LSA-18
- 2-light Bracket TL-B2
- 4-light Bracket TL-B4
- 8-light Bracket TL-B8



TL120-K4

- Light Body x4
- 5m Power Cord x4
- Adapter x4
- RJ45 Cable x4
- Clip x8
- Steel Cable x8
- Adapter Holder x4
- Remote control RC-R9 x1
- Carry Bag CB47 x1



Light Sticks






With cold/warm color temperature and adjustable light brightness, LED Light Stick LC500 is suitable for various of occasions like live, self portrait, product and wedding shooting, camping, etc. Added with RGB mode and FX light effect, LC500R adopts all you loved about its predecessor to further free your creativity. Its two-way barn door shapes and directs the light spread. With the CRI rating at 96 and TLCI at 98, the light reproduces the nature and vibrant colors.



LC500R

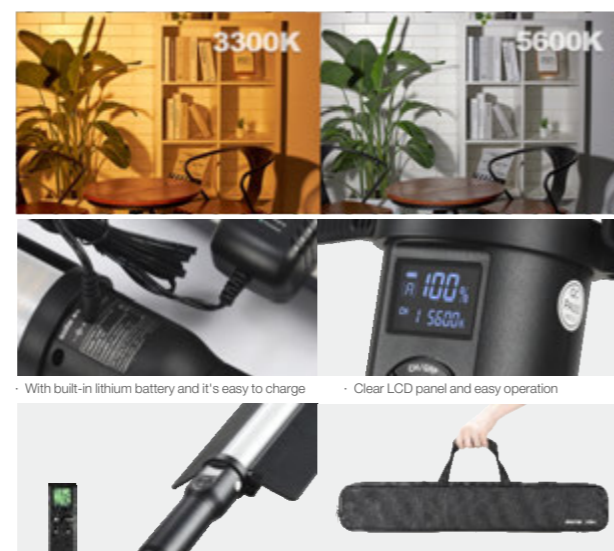
### Key Features for LC500R

- Freely switch LED bicolor mode, colorful light mode and 39 situational special effects modes
- Easy to adjust color temperature, light brightness, hue and color saturation
- Wireless remote control (optional) offers great convenience
- With easy operation and wide application

		<b>96</b>	<b>98</b>
RGB /CCT Mode	Max. 23W	CRI	TLCI
			
Max. Illuminance 5800	Wireless Remote Control	0-100% Precise brightness adjustment	

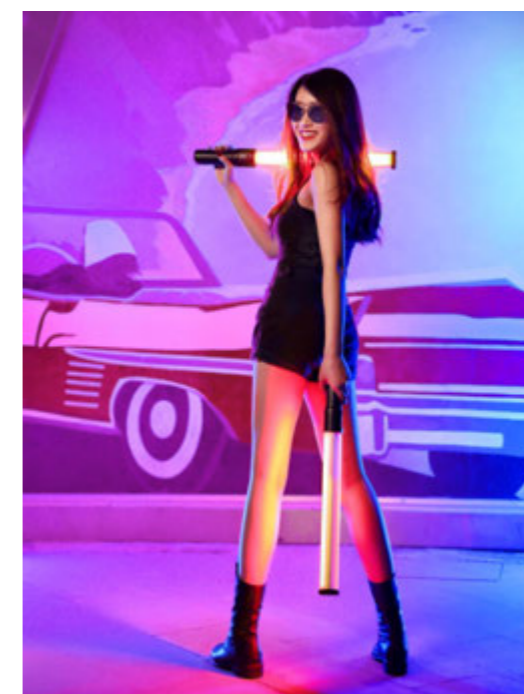
### Key Features for LC500

- With high color rendering index(CRI>95, TLCI≥95) and even illumination to present the objects authentically.
- Freely choose cold or warm color temperature. And the light brightness can be adjusted from 10% to 100%.
- Built-in lithium battery with long-lasting power supply.
- Optional remote control to wirelessly(6 groups & 16 channels) adjust the light for convenient shooting.
- Lightweight, portable and widely applicable.



- With built-in lithium battery and it's easy to charge
- Clear LCD panel and easy operation
- Wireless remote control (Optional)
- Comes with a carrying bag for easy transport and carriage

LC500



### Tech Specs

LED Light	LC500	LC500R
Built-in Lithium Battery	14.8V/2600mAh	14.4V/2600mAh
Power	Max.18W	Max.23W
Color Temperature	3300K±300K/6500K±300K	2500K-8500K
Channel	16	32
Group	6(A, B, C, D, E, F)	6(A, B, C, D, E, F)
Light Brightness Range	0%-100%	10%-100%
RGB Color Gamut	N/A	0-360°
100% Brightness(LUX)≈	1200 (1m)	Max. 5800
CRI(≈)	≥95	96
TLCI(≈)	>95	98
Duration (continuous output in 100% full power)	N/A	Approx. 90 minutes
Operating Temperature	-10 to 45°C	-10 to 45°C
Dimension	565*56*56mm	616*56*56mm
	(reflector is not included)	
Net Weight	760g	0.81kg





# STREAMING LIGHTS

Photographer: VJUS AS

# E-sports LED Light

**ES45** Kit



Designed especially for E-sports streamers, ES45 Kit is built to last with solid metal while keeping incredible slim and space-saving. It is bright enough to illuminate your streaming space yet still comfortably soft to your eyes. Embrace the ES45 Kit and just WOW. You look much more professional than before.

## Key Features

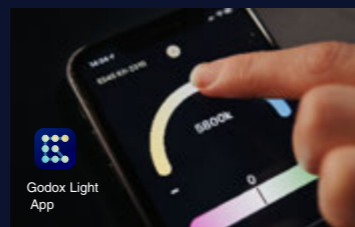
- Magnetic Auto-Charging Remote Controller
- Adjust color and brightness with the wireless 2.4 GHz controller. It's detachable from the light and reattaches magnetically to charge.
- IOS/ Android Smartphone Control: Godox Light app
- The ES45 renders soft light that is especially flattering to skin tones and complexions, so you'll always look your best.



Photographer: VJUS AS

## Group Control at Your Fingertips

Find out the perfect lighting setup without even getting up! Download the Godox Light app to your smartphone or tablet (IOS/Android), then you can control multiple lights at the same time at your fingertip via Bluetooth.



## Magnetic Auto-charging Controller

Adopting 2.4G technology, the detachable magnetic controller can adjust the brightness and the color temperature for a precise lighting set-up in real-time. Once the streaming is closed, you can put it back to the light panel for auto-charging.



# E-sports LED Light

ES45 Kit

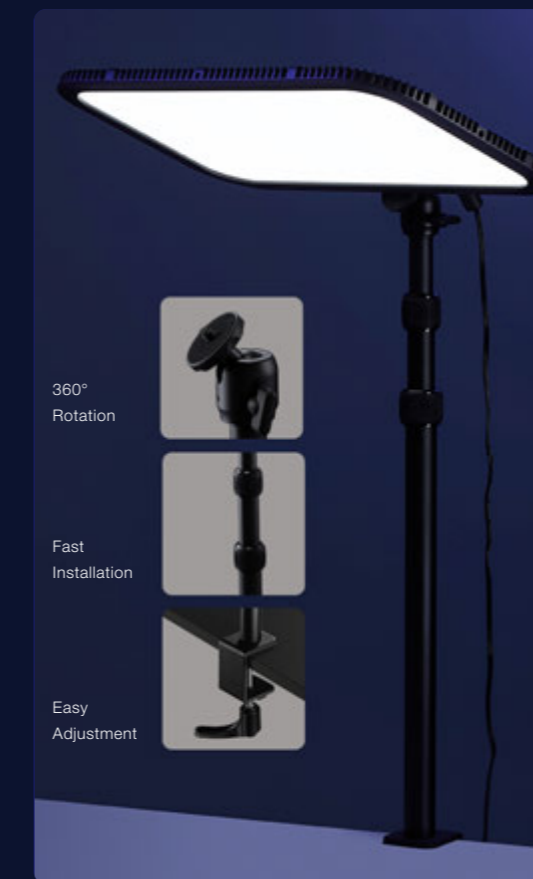
## Cool in the E-Sport

Featuring a super-efficient cooling system, ES45 Kit keeps the heat impressively low. You can enjoy long-hour streaming with a comfortable and neat ambience.



## Spotlight You from Anywhere

Low profile, thin, simple and elegant design. Effortless installation for a quick setup. Free rotation to desired angles for the best light effect.

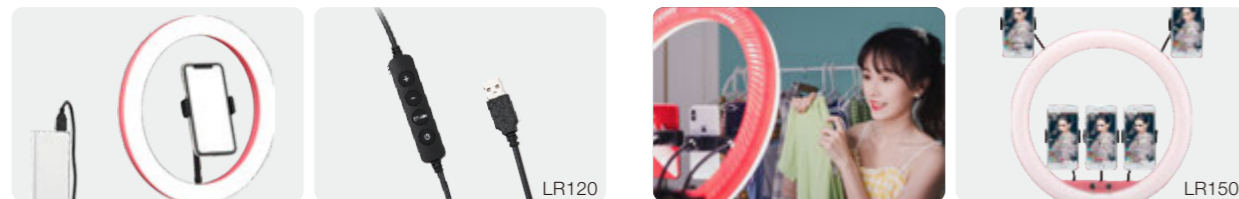


## Tech Specs

Model	ES45 Kit
DC Power Supply by Adapter	Input: 100~240V 50/60Hz 1.3A Output: 14.8V 3.42A
Lithium Battery of Operate Panel	3.7V Lithium battery (built-in)
Power	Up to approx.47.6W in max. (color temperature: 4100K)
Channel	32 (1~32)
Group	3(A, B, C)
Color Temperature	2800 ~ 6500K
100% Lumen (lm)	Max.2500
100% Luminosity (lx)	Max. ~4100 (darkroom, 0.5m distance)
CRI	≥96
TLCI	≥97
Brightness Range	0~100%
Control Method	Smartphone APP/2.4G Wireless
Quantity of LED Beads	176
Working Environment Temperature	-10~40°C
Dimension	367 * 230 * 31.04mm (operate panel is not included) 367 * 230 * 45.9mm (operate panel is included)
Weight	1.33KG (operate panel is included)



LED Ring Light LR120/LR150 is suitable for wide occasions e.g. livestream, video, make up, product shooting, etc.



Key Features

- Freely adjust color temperature and brightness
- Soft light effects and catchlight
- Easy operation
- Flexible application



Tech Specs

LED Ring Light	LR120	LR150
DC Power Supply	5V/2A	24V/2A
USB Power Output	/	5V/2A
Power	Approx. 10W	Approx. 38W
Color Temperature	3000K-6000K	3000K-6000K
100% Brightness(LUX) 0.5m≈	550	1400
Light Brightness Range	0%~100%	1%~100%
CRI	> 90	> 90
TLCI	> 90	> 90
LED Beads Quantity	222	336
Operation Temperature	-10~40°C	-10~40°C
Dimension	305x395x35mm	455x555x45mm
Weight	Black version: 440g	Black version: 880g Warning Pink version: 870g



With cold or warm temperature and light brightness adjustment, LED Ring Light LR160 & LR180 is suitable for live, portrait shooting and make up. There are pink version and black version for choice.

Key Features

- Premium LED beads with soft light effects.
- Adjustable light brightness and color temperature.
- DC power supply or lithium batteries (separately sold). Note: LR160 supports DC & lithium batteries power supply while LR180 only supports DC power supply.
- Included a smartphone holder to offer convenience.



Adjust LR160's color temperature by rotating the knob.



Adjust LR180's color temperature by replacing different light-passing board.



Light brightness adjustment

Tech Specs

LED Ring Light	LR160	LR180
Lithium Battery	2*7.4V Lithium battery / (NP-F970)(separately sold)	/
DC Power Supply	16V/1.5A	16.8V/2A
Power	Approx. 18W	Approx. 27W
Color	3300K-8000K	Black version: 3300K or 5600K Pink version: 3100K or 5000K
Temperature		
100%Brightness (LUX) (1M)	Below 400 (1 meter)	Black version: White light-passing board 600 Yellow light-passing board 400 Pink version: White light-passing board 600 Yellow light-passing board 500
CRI (max. brightness)	≈92	≈92
TLCI (max. brightness)	≈97	≈97
Light Brightness Range	10% ~ 100%	Light brightness can be adjusted.
LED Beads Quantity	160	180
Operation Temperature	-10°C ~ 40°C	-10°C ~ 40°C
Dimension	49.2* 59*4 cm	36.1*46*4cm
Weight	1.21Kg	0.88kg (with one light-passing board)



As an influencer, you may always have headache on how to decorate studio with limited budget, and how to create a viewer-welcoming ambience for your channel. CL10, multi-color LED Webcasting Ambient Light is specially designed to meet your needs. With 36000 selectable colors and 39 special effects, it enables your studio been fully dressed by customized lighting colors, deliver picturesque live streaming for audience, assist your career on webcasting with comparative ease and move forward to upper stage.



Free Color Adjustment



Multiple Controls



Blink with Music



39 Special Effects

### Key Features

- Built-in RGB and HSI color function offers 36000 selectable colors for users to adjust flexibly based on variable needs during live streaming. It can support users to build recognizable personal style, illuminate video and attract followers and subscribers effectively.
- 39 pre-programmed effects highly mimic lighting from real scenes to match with varies performance requirements and user's diverse fashion choices.
- APP and IR remote control offers handy approach for users to quickly adjust and control all of lighting modes right in the palm.
- Built-in multidimensional heat dispersion can protect lighting from high temperature and prolong its service time.
- To make sure uninterrupted power supply for continuously live streaming, CL10 can be powered by adapter and type-c charging like power bank.

### Tech Specs

Model	CL10
Power Supply	USB Power supply(5V/2A)
LED Light's Power	10W
RGB Color	0 ~ 360°
100% Max. Illumination(LUX)	≈1100 (green light)
Beam Angle	120°
Hue Range	0 ~ 360°
Saturation Range	0 ~ 100%
Wireless Control Modes	Wireless Remote control/ Smartphone APP
Wireless Control Distance	15m
Light Effects Modes	39
Temperature of Working Environment	-10° ~ 45°C
Dimension	192*192*65mm
Weight	270g





## Waterproof Lights

WL4B

WL4B



WL4B is a tiny pocket-sized LED light for creators, which enables to ignite your creation everywhere you go, to light your interview or live stream whenever you need. Waterproof function allows you to explore your journey in various environments. Bring the light with you, any challenge is possible!



### Key Features

- A CRI/TLCI rating of 97 and the 55° beam angle make it a powerful light fixture with excellent color rendition
- Wireless control via Godox Light APP support easy brightness adjustments, FX settings and the other necessary controls
- The fixture supports 13 effects including Lighting, Flash, Broken Bulb, TV, and SOS
- The WL4B is waterproof down to 100ft, which allows you to comfortably use the fixture in wet weather as well as dry, or when submerged
- It incorporates a rechargeable battery that lasts 80 minutes at full brightness, conveniently charging via USB-C cable connecting with your power bank or other power supplies outdoors.

### Tech Specs

Model	WL4B
Built-in Lithium Battery	3.8V/1500mAh
Power	Max. 4W
Waterproof Level	IPX8(30m)
Color Temperature Range	5600K ± 300K
Max. Illumination (LUX)(0.5m)(=)	1900
CRI(=)	97
TLCI(=)	97
Brightness Range	Low / Medium / High / SOS
Beam Angle	55°
Continuous Usage Time	High brightness ≈ 1 hour and 20 minutes Medium brightness ≈ 2 hours Low brightness ≈ 5 hours and 30 minutes
Standard Charging Power Source	DC5V/2A
Control Method	Smartphone APP
Working Environment Temperature	-10~40°C
Dimension	45*45*47mm
Weight	116g

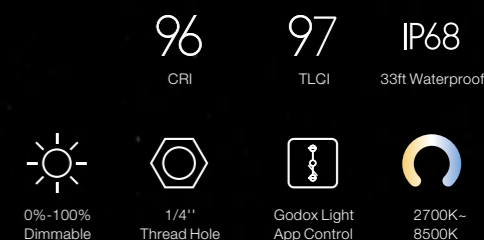


## Waterproof Lights

WL8P

WL8P

As a pocket-sized LED with rugged metal housing, WL8P is perfect for on-the-go shooting even in tough conditions. Featuring trustful brightness, high color fidelity and adjustable color temperature, the light combines high performance with portability, ready to cope with any wet weather shooting or realize your underwater creativity.



### Key Features

- Born for on-the-go  
Compact, portable and rugged, WL8P packs every remarkable feature for your on-the-go shooting. Measuring 11cm\*5.7cm\*3.25cm and weighing only 263g, taking a WL8P is almost like taking another smartphone, barely adding any burden to your journey.
- Ready for Water Challenge  
With IP68 waterproof down to 10m, the light can resist wet weather and accidental splash easily, a reliable solution for any waterside vlogging and video making.
- Light up Your Creation  
160 high-quality LED beads bring trustworthy brightness, dimmable from 0%-100%. Combined with a wide beam angle, it allows you to light up all the subjects within the frame. Perfect to serve as a Vlog light or fill light for your shooting.
- Excellent Color Fidelity  
With a CRI rating of 96+ and a TLCI rating of 97+, it delivers vibrant, natural light and reproduces accurate colors.
- Adjustable Color Temperature  
The CCT mode features a wide color temperature range from 2700K-8500K, providing more creative ways with no need for gels. A nice choice to match the ambient light, shape your look and get the amazing skin tone you want.
- Creative Light Effects  
8 built-in special light effects with 3 modes each (except for strong light effect) for creating various dramatic effects, adding spice to your video content at no extra cost.
- Wireless Control at Your Fingertip  
Through Godox Light App, you can change the brightness, color temperature and FX effects of WL8P remotely. Especially practical when you use it as an underwater light source or need group control.

### Tech Specs

Model	WL8P
Built-in Lithium Battery	3.7V/2900mAh/10.73Wh
Standard Charging Power Source	DC 5V/2A
Power	10W
Waterproof and Dustproof Grade	IP68(10m)
Color Temperature Range	2700K-8500K
CRI(=)	96
TLCI(=)	97
Brightness Range	0%-100%
Photometrics	313 fc / 3370 Lux at 0.98' / 0.3 m 116 fc / 1250 Lux at 1.64' / 0.5 m 30 fc / 323 Lux at 3.28' / 1 m
Bluetooth Transmission Distance on Land	10m
Continuous Working Time	100% brightness: 1h
Control Method	Mobile phone APP
Working Environment Temperature	-10°C - 40°C
Dimension	11cm*5.7cm*3.25cm
Net Weight	263g

- Power that Never Fails You  
Built-in 2900mAh lithium battery guarantee a 1-hour runtime at full brightness, which helps you concentrate on creation without interruption. A reliable choice both on location and indoor.

# SMARTPHONE LIGHTINGS



## Smartphone Lightings

R1 / M1

R1



Free Color Adjustment



Blink with Music

FX

39 Special Effects

Round RGBWW Mini Creative Light R1 can change different colors and achieve creative light effects with RGBWW mode, bicolor modes and 39 special effects modes.

### Key Features

- This light can change multiple colors to achieve creative light effects. With approx. 98 CRI and 97 TLCI, it can present projects authentically.
- There're 39 different patterns in RGB scene mode, e.g. music, lightning, screen, RGB quick recycle, RGB slow recycle, candlelight, police car, fire truck, ambulance, etc.
- Built-in Lithium Battery and Charge with Type-C USB Port, Freely adjust light brightness from 0% to 100%. It supports continuous work for 1.5 hour in full power.
- Compatible with Various of Accessories and Achieve More Light Effects With magnetic accessory port, this light supports to install AK-R1 round head accessories (separately sold) and achieve creative shooting.
- With built-in magnet, this light can be quickly pasted onto the back of smartphone, which saves a lot of time and energy.

### Tech Specs

Model	R1
Built-in Lithium Battery	1800mAh
Power	Max. 5W
Charging power supply	5V1A, 5V2A
Color temperature range	2500K-8500K
100% Illuminance(LUX)(0.5m)(=)	605
CRI(=)	98
TLCI(=)	97
Light brightness range	0%-100%
Duration(continuous output in 100% power)	Approx. 90 Minutes
Operation temperature	-10-45°C
Dimension	Diameter: 75mm; Thickness:23mm
Net weight	150g

M1



Free Color Adjustment



Blink with Music

FX

40 Special Effects

With 40 special effects modes, fashion appearance, simple operation and great portability, RGBWW Mini Creative Light M1 is suitable for macro photography, video shooting, microfilm, live, portrait shooting, product shooting, etc.

### Key Features

- Freely switch CCT mode, RGB mode and 40 FX special effects modes.
- Easy to adjust color temperature, light brightness, hue and color saturation
- With a dedicated screen to display parameters precisely
- With a universal accumulating bracket to quickly adjust different lighting angles
- With simple operation and light and thin body which offers great portability
- Various of using methods

### Tech Specs

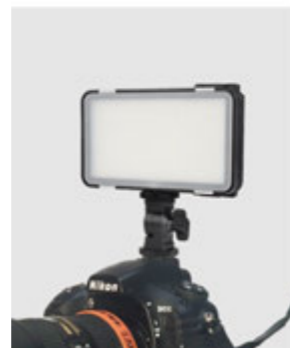
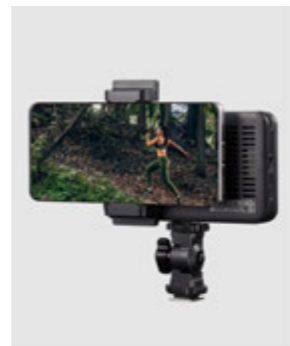
Model	M1
Charger(separately sold)	5V2A/18W QC3.0(5V3A,9V2A,12V1.5A)
Power	Max. 13W
Color temperature range	2500K-8500K
Light brightness range	0%-100%
RGB Color gamut	0-360°
100% Illuminance(LUX)	Max. 1700
CRI(=)	97
TLCI(=)	97
Bracket rotation angle	Main axis: 360°; Inside axis: 270°
Duration(continuous output in 100% power)	150 Minutes
Operation temperature	-10-45°C
Dimension	145*70*15mm
Net weight	240g



LEDM32



LEDM150



With the light weight and convenient operation, LEDM32 & LEDM150 Mini Light is excellent for all kinds of mobile phones.

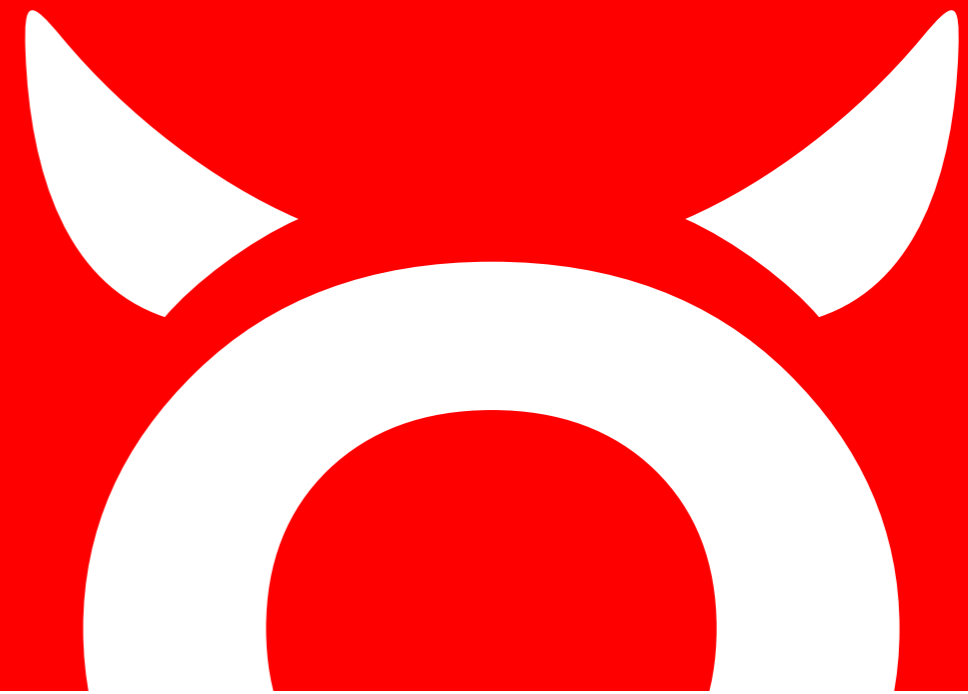
### Key Features

- High-quality LED bulbs
- Built-in lithium battery
- Soft and even illumination
- Adjustable light brightness
- With the optical control flash fire function
- With a lightweight and portable body
- Fit almost any mobile phones

### Tech Specs

LED Light	LEDM32	LEDM150
Built-in Lithium Battery	3.7V 300mAh	3.7V-3000mAh
Power	Max. 1.4W	Max. 9W
Color Temperature	5200K±300K	5600K±300K
Brightness (LUX)	>120 (0.5 m)	1029 (0.5 m)
Color Rendering Index	≥95	>95
TLCI	≥94	≥94
Light Brightness Range	10%~100%	10%~100%
LED Beads Quantity	32	150
Operation Temperature	-10~50°C	-10~50°C
Dimension	50mm*50mm*28mm	132mm*80mm*20mm (not with the L-type Bracket and Mounting Bracket)
Net Weight	30g	170g

# LITEMÖNS





**LED6R**  
RGB

**LED6Bi**  
Bi-color

## Smartphone Lightings

LED6R / LED6Bi



36000  
colors



Light  
Effects



Magnet  
Absorption



Use in  
Combination



Type-C  
Port

Litemons video light series is a set of entry-level tools designed to make your journey of the content creation much easier, a portable, ease-of-use and budget-friendly lighting solution to which our LED6R/LED6Bi belongs. Small but versatile, the two lights are made for different needs. For creators who'd love to play with colors and try dramatic effects, the RGB LED6R won't let you down. Otherwise, try LED6Bi if you only need a simple bi-color solution. Working with camera or smartphone, the Litemons series is always your best choice for vlogging, YouTube video, party lighting, selfie, portrait, product photography and more.

### Key Features

- Pocket-sized and ultra-lightweight
- RGB/CCT & 3200 to 6500K Color Temperature
- 0 to 100% Brightness Dimming
- Built-In Display Panel
- Integrated 1800mAh Lithium Battery
- Magnetic Mounting
- Cold Shoe Mounting Foot & 3 x Cold Shoes
- Vertically & Horizontally Stackable

### Tech Specs

	LED6DR	LED6DBi
Built-in Lithium Battery	1800mAh	1800mAh
Power Source of Charging	5V/2A	5V/2A
Power	Max. 6W	Max. 6W
Color Temperature Range	3200K-6500K	3200K-6500K (in 9 levels)
100% Illuminance(LUX)(0.5m)(s)	270	360
CRI(=)	95	95
Brightness Range	0%-100%	in 10 levels
Duration	2H-10H	1.5H-10H
Working Environment Temperature	-10-40	-10-40
Dimension	77*66*30mm	77*66*30mm
Net Weight	110g	110g

\* RGB mode, FX mode, magnetic design (only for LED 6R)

LA150D / LA200D

Litemons LED Light

LA150Bi / LA200Bi

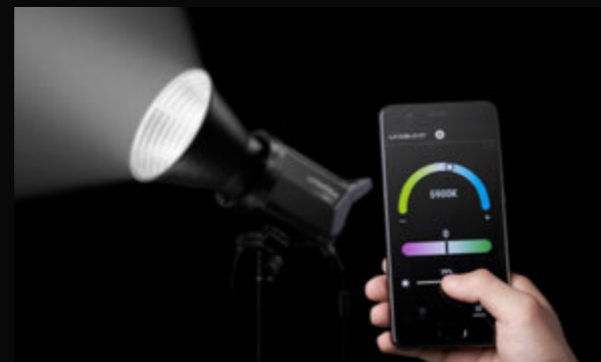
Litemons Bi-color LED Light



Godox has launched many successful products and wins the support and admiration of our customers. But the further we go, the more responsibility we feel like taking on to contribute to the development of the industry. Aiming at providing an accessible light solution to whoever wants to start creation, we are excited to introduce the budget-friendly Litemons LA150D/150Bi/200D/200Bi. With different output and daylight/bi-color versions to choose from, the LA series can meet various needs for YouTubers, live streamers, video makers, commercial producers and more.

Key Features

- Compact but powerful, with 101000 lux output at 1meter (LA200D with reflector)
- Stepless brightness adjustment from 0 to 100%
- Bi-colored LA150Bi/LA200Bi is adjustable from 2800-6500K
- High CRI/TLCI rating of 96+/97+ ensures natural and faithful colors
- Godox Light APP available
- LA150D/LA200D features 8 FX light effects, including Flash 1, Flash 2, Flash 3, Storm 1, Storm 2, Storm 3; LA150Bi/LA200Bi adds another three light effects: Candle, Fire and Firework.
- Compatible with any Bowens mount light shapers
- Built-in umbrella mount



LA150D

CCT Distance	Testing Condition	Illuminance Unit	1m	2m	3m
5600K	bare bulb	lux	7030	1860	903
		fc	653	172	83.8
	with reflector	lux	84800	17800	7610
		fc	7880	1650	707

LA200D

CCT Distance	Testing Condition	Illuminance Unit	1m	2m	3m
5600K	bare bulb	lux	8670	2170	1050
		fc	806	201	97.6
	with reflector	lux	101000	20800	8670
		fc	9360	1930	806

LA150Bi

CCT	Testing Condition	Illuminance Unit	1m	2m	3m
2800K	bare bulb	lux	3020	806	409
		fc	281	74.8	38
3200K		lux	3550	947	483
		fc	329	88	44.9
4300K		lux	5030	1350	688
		fc	468	125	63.9
5600K	lux	5080	1360	695	
	fc	472	126	64.5	
6500K	lux	4400	1180	600	
	fc	409	110	55.7	

LA200Bi

CCT	Testing Condition	Illuminance Unit	1m	2m	3m
2800K	bare bulb	lux	3570	951	478
		fc	331	88.4	44.4
3200K		lux	4350	1160	586
		fc	404	108	54.5
4300K		lux	6850	1840	924
		fc	637	171	85.8
5600K	lux	6970	1870	937	
	fc	647	174	87	
6500K	lux	5630	1510	774	
	fc	523	140	71.9	

LA150Bi

CCT	Testing Condition	Illuminance Unit	1m	2m	3m
2800K	with reflector	lux	37700	8150	3340
		fc	3500	757	310
3200K		lux	44800	9660	3970
		fc	4170	897	369
4300K		lux	64900	13900	5740
		fc	6030	1290	534
5600K	lux	66600	14400	5890	
	fc	6190	1340	547	
6500K	lux	58300	12400	5150	
	fc	5420	1150	479	

LA200Bi

CCT	Testing Condition	Illuminance Unit	1m	2m	3m
2800K	with reflector	lux	39300	8440	3550
		fc	3650	785	330
3200K		lux	48500	10400	4340
		fc	4510	964	403
4300K		lux	77400	16400	6890
		fc	7190	1520	640
5600K	lux	79200	16800	7030	
	fc	7360	1560	653	
6500K	lux	64300	13600	5670	
	fc	5970	1260	527	

Tech Specs

Model	LA150D	LA150Bi	LA200D	LA200Bi
Power	Max.190W	Max.190W	Max.230W	Max.230W
Input Voltage	DC 48V	DC 48V	DC 48V	DC 48V
CCT	5600K	2800-6500K	5600K	2800-6500K
Brightness Adjustment Range	0%-100%	0%-100%	0%-100%	0%-100%
CRI ≈	96	96	96	96
TLCI ≈	97	97	97	97
FX Mode	8	11	8	11
Controlling Method	Manual Control, Bluetooth APP Control	Manual Control, Bluetooth APP Control	Manual Control, Bluetooth APP Control	Manual Control, Bluetooth APP Control
Bluetooth Transmission Distance	30m	30m	30m	30m
Working Environment Temperature	-10°C~40°C	-10°C~40°C	-10°C~40°C	-10°C~40°C
Bluetooth Transmission Frequency	2402.00-2480.00MHZ	2402.00-2480.00MHZ	2402.00-2480.00MHZ	2402.00-2480.00MHZ
Maximum Transmit Power	5dbm	5dbm	5dbm	5dbm
Dimension	205*145*215mm	205*145*215mm	205*145*215mm	205*145*215mm
Net Weight≈	1.4kg	1.4kg	1.4kg	1.4kg

# GODOX CONTROL

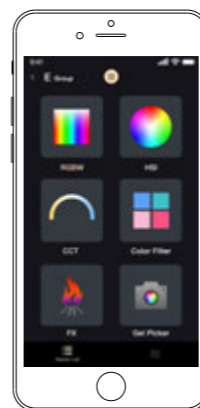


Director: Jameson Brooks

## APP Control



Godox Light



Godox Light is available for Android and iOS, can be used to wirelessly control Godox lighting via bluetooth. You have full control over power, brightness, color temperature, and RGB values for compatible lights. Godox Light lets you put lights into groups so you can control lights individually or as part of a group. This app is a big leap forward for Godox in terms of control and capability.



RGBW

- Color gamut control: use the picker to choose the color you like, the lower the more saturated
- Red, green, blue, white control you click the number box or drag the white circle to choose the value of each color separately. This mode gives you the opportunity to set the color more precisely



HSI:  
Hue,  
Saturation

- HSI mode gives you a color wheel, by dragging the picker around to choose different color. The further away from the center you are, the more saturated your color would be.



CCT

- The CCT mode supports color temperature range from 2500K-8500K. You can also tune the green and magenta tint here.



Gel Filter:  
L-Gel, R-Gel,  
Custom

- Choose different color presets from the L-Gel and R-Gel Library.



FX

- You can adjust the speed and brightness for each available FX effect here.



Color Picker

- Use any images from your phone or you can take a new photo with your phone camera, then use your finger to pick any color you want. The light will replicate the color you picked

## Compatible Continuous Light

Panel Lights: LD75R/LD150R/LD150Rs    Waterproof Lights WL4B/WL8P  
 Streaming Lights: Es45/CL10    Tube Lights: T130/TL60    Focusing light S60  
 Spotlights: ML30/ML30Bi/ML60Bi/SZ200Bi/SZ150R/SL100D/SL100Bi/UL60

Download Godox Light APP to control your light by smartphone



## Remote Control



### RC-R9

RGB 2.4GHz Remote Control  
 Group: 16 Channel: 32 ID: 99  
 Light Brightness Adjustment Range:  
 0% to 100%  
 Freely adjust multiple beautiful colors  
 and color temperature from  
 2500K to 8500K  
 Compatible with:  
 LC500R



### RC-A6

2.4GHz Remote Control  
 Group: 16 Channel: 32  
 Light Brightness Adjustment Range:  
 0% to 100%  
 Compatible with:  
 SL150II, SL200II, SL150IIBi,  
 FV150, FV200, LF308Bi, LF308D



### RC-A5

433MHz Remote Control  
 Group: 6 Channel: 16  
 Light Brightness Adjustment Range:  
 10% to 100%  
 Compatible with:  
 LC500, SL150W, SL200W,  
 SL60W, SLB60W, FL100,  
 FL150R, FL150S, FL60,  
 LED380C II, LED308W II,  
 LED500L, LED500LR, LEDP260C



### RC-A5II

433MHz Remote Control  
 Group: 6 Channel: 16  
 Light Brightness Adjustment Range:  
 0% to 100%  
 Compatible with:  
 VL150, VL200, VL300,  
 LED1000Bi II, LED1000D II

# Optical Accessories



## Fresnel Lens

FLS10/FLS8



Build with class-leading technology to intensify the LED light the Godox Fresnel Lenses empower your LED lights to deliver an even brighter beam penetrating faraway and renders consistent luminescence with smooth intensity. Tons of technology behind FSL10 serve for one purpose-maximizing the output while maintaining the light quality.

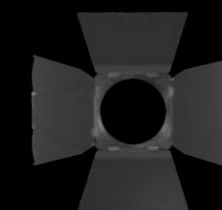
### Tech Specs

Model	FLS8	FLS10
Adjustable Beam Angle	10°-40°	10°-35°
Working Temperature	-10°C-40°C	-10°C-40°C
Dimension	246mm*246mm*121mm	295mm*295mm*135mm
Weight	2kg	3kg

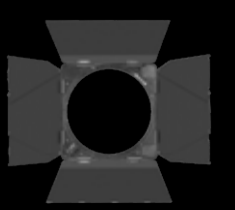
### Key Features

- **Intensify the Output**  
The Godox Fresnel Lenses FLS8 and FLS10 amplify the output of Godox LED lights utmost by 19 times.
- **Variable Beam Angle**  
Beam thrown by FLS8 can be adjusted from spot 10° to flood 40°. Beam thrown by FLS10 can be adjusted from spot 10° to flood 35°.
- **Robust Construction**  
The ergonomic and sturdy build of the Godox Fresnel Lenses ensures minimized light leaks and rugged durability.
- **Compatible with Barndoors**  
Compatible with the Godox 8-leaf barndoors to precisely cut and shape the light for more creative expressions.

### Optional Purchase



LB-01 for FLS8



LB-02 for FLS10



## Spotlight Attachment



VSA-19K / 26K / 36K

With three optional lenses, the powerful creating tool is designed with utmost precision to grant the LED lights with even, crisp, and clear beam and brings you with an endless source of inspiration.

### Key Features

- Throwing an evenly intensified illumination circle without shifting in color and brightness from center to edge.
- Adopting a class-leading lens system to eliminate aberration to strike an incredible crisp beam of light with sharp-edge projection
- Bring you ultra fun to create by cutting, shaping, focusing, and coloring the light.
- Interchangeable lens in 19°, 26°, 36°.
- Bowens mount for wide compatibility.
- Robust yolk allowing for versatile shooting scenarios.

### Dimension and Weight

Spotlight Attachment Kit Model	VSA-19K/ VSA-26K/ VSA-36K
Spotlight Attachment Dimension (excluding Lens)	516*241*196mm
Lens Dimension	135*219*137mm
Spotlight Attachment Weight (excluding Lens)	3.42kg
Projection Lens 19° Weight	1.94kg
Projection Lens 26° Weight	1.75kg
Projection Lens 36° Weight	1.92kg



## Spotlight Attachment

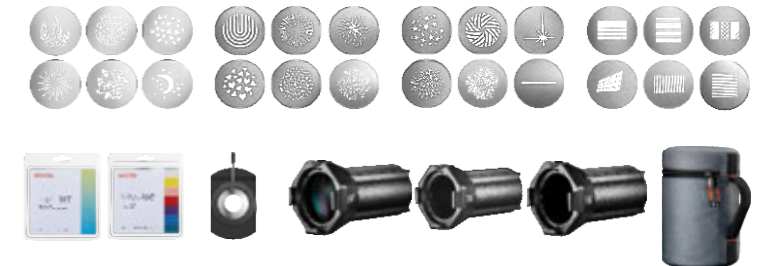
### Dimension and Weight

LED Video Light	CCT	Spotlight Attachment	Lens	Illuminance			
				Unit	3m	4m	5m
VI300	5600 100%	NO	NO	Lux	1380	860	602
				Fc	128.3	79.9	55.9
		YES	Projection Lens 19°	Lux	7530	4040	2400
				Fc	699.8	375.5	223
		YES	Projection Lens 26°	Lux	5130	2830	1720
				Fc	476.8	263	159.9
		YES	Projection Lens 36°	Lux	4200	2330	1430
				Fc	390.3	216.5	132.9

Note: The above luminance and CCT values are all average numbers, the illuminance values of different lights vary slightly.

### Optional Purchase

- Gobo Set VSA-GS1
- Gobo Set VSA-GS2
- Gobo Set VSA-GS3
- Gobo Set VSA-GS4
- CCT Adjustment Set VSA-11T
- CCT Adjustment Set VSA-11C
- Iris Diaphragm VSA-ID
- Lens Portable Bag



Lens 19°  
Lens 26°  
Lens 36°

### VSA-19K Kit

- Spot Light Mount x1
- 19° lens x1
- Gobo Holder x1
- Gobo x3
- Gel Frame x1
- Portable Bag x1



### VSA-26K Kit

- Spot Light Mount x1
- 26° lens x1
- Gobo Holder x1
- Gobo x3
- Gel Frame x1
- Portable Bag x1



### VSA-36K Kit

- Spot Light Mount x1
- 36° lens x1
- Gobo Holder x1
- Gobo x3
- Gel Frame x1
- Portable Bag x1





# ACCESSORIES

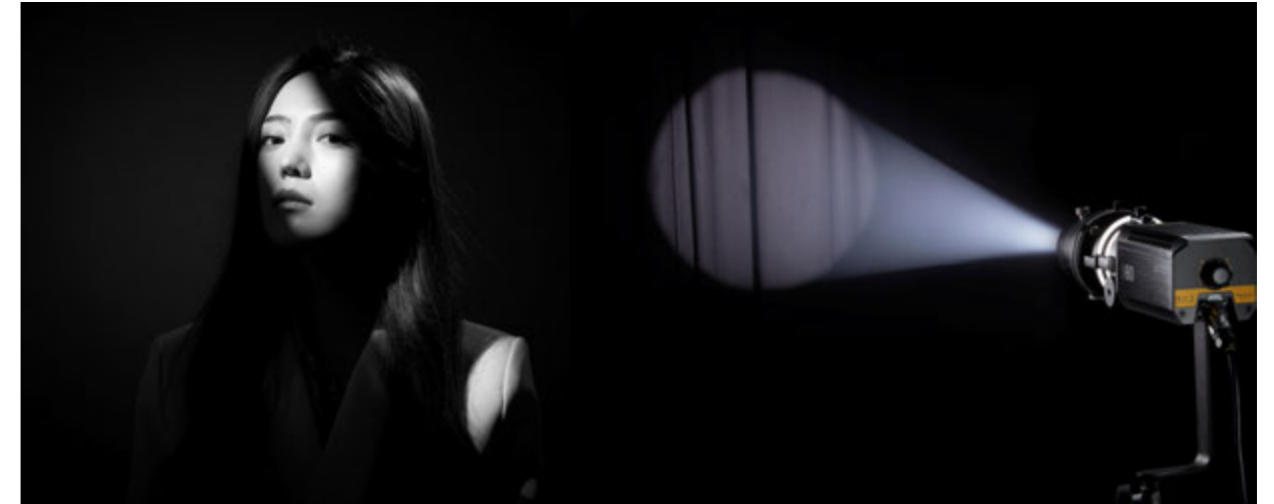
## Projection Attachment

### SA-17



Godox SA-17 Adapter for Bowens-mount LED lights to Projection Attachment, with its solid construction, allows you to use Godox SA-P Projection attachment with any of your Bowens-mount LED Lights for achieving a greater degree of control with your light.

**Extending the SA-P Projection Attachment's Compatibility**  
The adapter allows COB Bowens-mount LED lights users to release their boundless creativity by matching with SA-P projection attachment to achieve their desired effects. For users who already own S30 focusing light, now they can go beyond S30 and use the adapter to serve for a broader range of Bowens-mount LED lights. Equipped with built-in optical lens, the adapter provides excellent optical performance, assuring light output that's even from edge to edge.





**AD-S60S**

Compatible with AD300Pro/ML60/ML60BI, comes with grids  
 Godox AD-S60S is a dedicated softbox with silver interior finish and parabolic reflecting shape to deliver indirect lighting and create distinct contrasts. The softbox has native Godox mount to snap onto the AD300Pro or ML60/ML60Bi in no time, comes with two levels of diffusion to create degrees of increased softness, includes grids for extra beam directing, and has zippered slot for cables and cord placement on the side.

**AD-S65S / AD-S65W**

Compatible with AD300Pro/AD400PRO/ML60/ML60BI, comes with grids  
 The parabolic softbox has two model AD-S65S with silver lining and AD-S65W with white lining. AD-S65 softbox adopts parabolic box design to offer soft and even light effects for shooting. The shape of the softbox allows the user to control precisely where the light falls and soften the light stream and is built on the basis of a quick folding mechanism.

**AD-S85S / AD-S85W**

Compatible with AD300Pro/AD400PRO/ML60/ML60BI, comes with grids  
 With deep design to output soft light with a sharp falloff, Godox AD-S85 makes feathering and edge-lighting simple. The included fabric grid thwarts spill light and offers directional control necessary for selective lighting. Its quick-folding mechanism allows you to set up and break down quickly.



The Godox mount softboxes comes with a grid that eliminates spill light and provides the directional control that facilitates selective lighting.



If you want a cool-toned look with snappy contrast, attach the silver reflector inside the umbrella. If you want a soft, warm rendition attach the gold reflector. The removable front diffuser makes it easy.



**CS-85D / CS-65D**

Godox Collapsible Lantern Softbox CS-85D/CS-65D is perfect for use overhead or to raise the ambient illumination level. With a 270 degree beam angle, the light is ideal for video recording, live streaming, film making, and still life photography.

Purchase skirt for achieving better light control  
 Skirt Set for Lantern Softbox (Available for Purchase)SS-65 for CS-65D / SS-85 for CS-85D



**Key Features**

- Extremely Fast Setup
- Stunning, Soft, Omni-Directional Light
- Bowens Mount Compatibility
- Optional skirts for beam spread control



Thanks to its simple and durable design, this softbox is a breeze to use. The lantern can be popped open or closed in mere seconds.



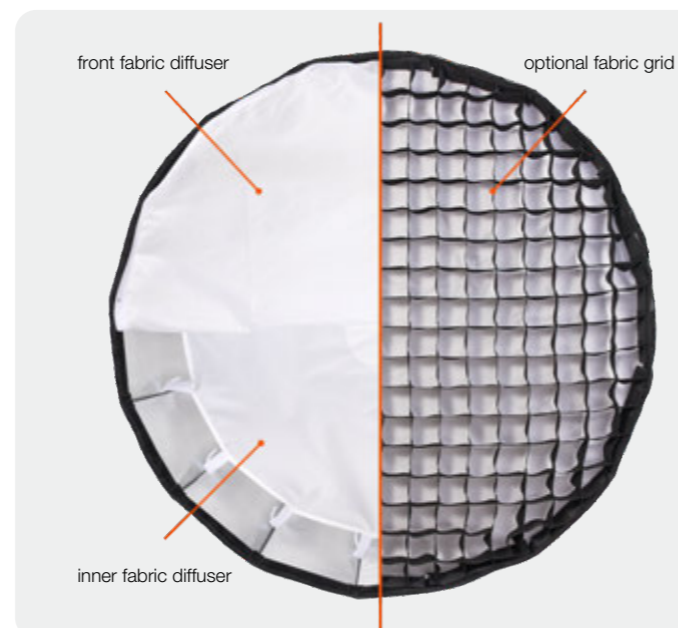


### P90L / P90H

Godox Parabolic Softboxes are the essential modifier for commercial, fashion, and portrait photographers. There are two version for choice, P90L for Lighy Version and P90H for High Temperature Resistant Version. P90L/P90H series adopt deep parabolic box design, which enables light to be sent out straightly and brightness, offering even, soft, and high saturation light effects for shooting with easy installation, great portability. P90L/P90H comes with removable one-stop outer and inner diffusers to achieve different levels of contrast. A carry bag is included for storage and transport.

### P120L / P120H

Godox P120L/P120H softbox is useful for stunning fashion and portraiture images. Same as P90L/P90H, the P120 softbox also has two version. P120L/P120H is a 16-sided light-shaper offering focused, soft output with a punchy, crisp edge that lends dimension and detail to your subject as well as natural-looking catchlights in their eyes. The parabolic design yields soft, focused light with a crisp edge. With removable outer and inner diffusers, it can achieve desired contrast. A carry bag is included for storage and transport.



### QR-P70 / P90 / P120

The Godox quick release parabolic softbox adopts an impressive quick release system for rapid setup and breakdown. Highly versatile and compatible, it provides you reliable light quality and various creative expressions. Available in three different sizes, this fast and easy to use softbox is deal companion for your indoor and on location shootings

#### Key Features

- Reflective silver interior to render a punchy high contrast
- Removable inner and front fabric diffusers
- Impressive quick release system for rapid setup and breakdown
- Reliable light quality and various creative expressions
- Bowens mount strobes and continuous light compatible

Each of the parabolic softboxes (P90L/H & P120L/H) as well as QR Quick Release Parabolic Softboxes have a reflective silver interior with a black outside. There are also removable inner and front fabric diffusers that clip into both the parabolic softbox and quick release parabolic softbox, as well as an optional fabric grid to narrow down the beam spread for more precise control.

Removable inner and front diffusers, giving you brightness & contrast. The collapsible grids (optional) narrows the beam spread of the softbox.

#### Grids

- P70-G for QR-P70
- P90-G for P90L/H QR-P90
- P120-G for P120L/H QR-P120

## Parabolic Softbox | Quick Release Bowens Mount

QR-P70 / P90 / P120

Compatible with any flash head or monolight that uses the popular Bowens accessory mount; The softbox can also mount with Godox mount and Profoto mount accessory via attaching the SA-GD Godox mount adapter (optional) and SA-PF2 Profoto mount adapter (optional). And speed ring SA-BR2 is for adapting Broncolor lights.



As it folds down into an easy carry bag, it's extremely portable and therefore ideal to use on location.



## Effortless Softbox Setup

The easiest way to put the softbox up is to click two rods on opposite sides up at the same time. Once they're all clicked into place, you simply Velcro the top panels of the softbox together to prevent light leakage.



To take the softbox down again, you simply lift the rod slightly whilst pressing down the button above it.

In this way, you can have the softbox assembled in mere minutes.



## Softbox | Bowens Mount

Godox offers softboxes with Bowens mounting, which fits most of Godox flash heads or other brands with the widely used Bowens front accessory mount. Ideal for all types of photo work, Godox softboxes render a soft, flattering quality of light with manageable contrast. There are SB-FW Series, SB-USW Series, and SB-GUE Series include grids to offer directional control of the output, keeping light off the background, and allowing you to light specific areas of your subject.



**Square Softbox**

Model: SB-BW-6060/9090  
Sizes (W x H): 60x60cm, 90x90cm

**Rectangular Softbox**

Model: SB-BW-6090/70100/80120  
Sizes (W x H): 60x60cm, 70x100cm, 80x120cm

**Strip Softbox**

Model: SB-BW-50130/35160  
Sizes (W x H): 50x130cm, 35x160cm

**Octagon Softbox**

Model: SB-BW-95/120/140  
Sizes: 95cm, 120cm, 140cm



**Square Softbox with Grid**

Model: SB-FW-6060/9090  
Sizes (W x H): 60x60cm, 90x90cm

**Rectangular Softbox with Grid**

Model: SB-FW-6090/70100/80120  
Sizes (W x H): 60x60cm, 70x100cm, 80x120cm

**Strip Softbox with Grid**

Model: SB-FW-50130/35160  
Sizes (W x H): 50x130cm, 35x160cm

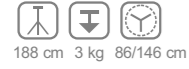
**Octagon Softbox with Grid**

Model: SB-FW-95/120/140  
Sizes:  $\phi$ 95cm,  $\phi$ 120cm,  $\phi$ 140cm

## Professional Light Stands

### 190F

Adjustable Legs Light Stand



188 cm 3 kg 86/146 cm

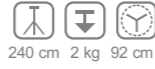


49 cm 1.25 kg



### 240F

Light Stand



240 cm 2 kg 92 cm



68 cm 1.3 kg



### 240FS

Wheeled Light Stand

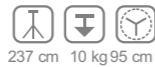


240cm 120cm 110cm



### 240CS

C-Stand with Arm (Silver)



237 cm 10 kg 95 cm



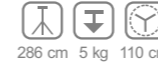
130 cm 6 kg



## Professional Light Stands

### 290F

Heavy Duty Light Stand



286 cm 5 kg 110 cm



110 cm 2.2 kg



### 300F

Light Stand



300 cm 3 kg 108 cm



86 cm 1.7 kg



### 380F

Heavy Duty Light Stand



380 cm 5 kg 110 cm



110 cm 2 kg



### 270CS

C-Stand with Arm (Silver)



270 cm 10 kg 95 cm



120 cm 6.3 kg



### 420LB

Light Boom Stand with Weight Bag



422 cm 5 kg 109 cm



125 cm 4.3 kg



## Tripod Head Accessories

### LS-01

Multi-function Clamp



Multi-function Clamp can be installed on the light stand to attach small studio accessories or hang objects.

### LS-02



### LS-03

Nano Clamp



### LSA-06

Wheel for Light Stand



Step-On lock design locks the wheel from rolling

### LSA-07



### LSA-08

Flexible Arm



Flexible and strong enough to hold Shoe-Mount strobes at all angles to reduce unwanted reflections

### LSA-09

Heavy Duty Flexible Arm



### LSA-04

Magic Arm



The two arms can be freely adjusted and locked by the knob

### LSA-05

Extension Arm



The extension arm is designed for attaching to a Convi clamp for hanging a light or a camera from a light stand or pole

### LSA-13

Sky Hook



For hanging accessories

### LSA-11

Laptop Tray



An aluminum platform to hold your laptop on a camera stand. Especially held on the laptop tray LSA-12, the cables of the laptop can be fixed on all edges of the holder with cable ties, thus preventing them being pulled out.

### LSA-12

Laptop Tray



### BS-04

Background Stand

Retractable Background Stand with Carrying Bag

Max. H.: 260cm	Folded Height: 97cm
Bar Segment: 3	Bar Length: 300cm
One Segment Length: 100cm	Bar Material: Aluminum



## Tripod Head Accessories

### FH02

Reflector Boom Holder



### FH01

Light Boom Holder



### LSA-14

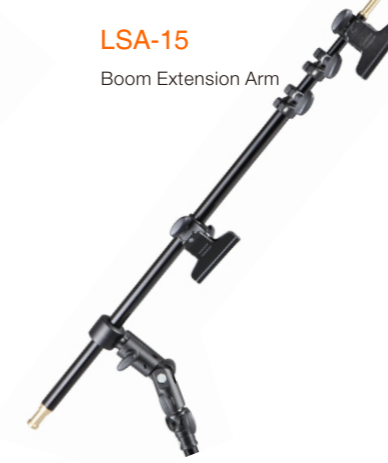
Boom Extension Arm



Easily extended, good stability, high load capacity

### LSA-15

Boom Extension Arm



### LSA-16

Boom Arm with Reflector Holder



### LSA-10

Dual Mount Arm



The dual mount arm features four separate mounting points- two heads on the sides of the arm and two heads on a 90°perpendicular angle





**CB-32**

Dimensions: 46.5\*22.5\*35CM  
Recommended placing items: ML30-K2/ML30Bi-K2



**CB-33**

Dimensions: 55\*24\*39CM  
Recommended placing items: ML-Kit1/ML-Kit2



**CB-23**

Dimensions: 37.7\*17\*8.5CM  
Recommended placing items: TL30-K2



**CB-39**

Dimensions: 77.5\*22.5\*7.5CM  
Recommended placing items: TL60-K2



**CB-22**

Dimensions: 37.7\*26.7\*8.5CM  
Recommended placing items: TL30-K4



**CB-40**

Dimensions: 78\*36.5\*8CM  
Recommended placing items: TL60-K4



**CB-15**

Dimensions: 40\*23\*30CM  
Recommended placing items: S30 Three-light kit



**CB-05**

Dimensions: 74\*26\*27CM  
Recommended placing items: SL60W Two Light Kit



**CB-04**

Dimensions: 78\*24\*24CM  
Recommended placing items: SL100D-K2 / SL100Bi-K2



**CB-21**

Dimensions: 33\*24\*61CM  
Recommended placing items: S60-D Three-light kit