

## READ ALL INSTRUCTIONS BEFORE OPERATING

### SAVE THESE INSTRUCTIONS

Thank you for purchasing your King # 4416-0 20 Gallon Parts Washer. Before attempting to operate your new Parts Washer please read these instructions thoroughly. You will need these instructions for the safety warnings, precautions, assembly, operation, maintenance procedures, parts list and diagrams. Keep your invoice with these instructions. Write the invoice number on the inside of front cover. Keep the instructions and invoice in a safe, dry place for future reference.

**WARNING:** The warnings, cautions and instructions discussed in this instruction manual cannot cover all possible conditions or situations that could occur. It must be understood by the operator that common sense and caution are factors which cannot be built into this product, but must be supplied by the operator.

## SAFETY RULES

1. Know your machine. Read this manual carefully. Learn the machine's applications and limitations, as well as specific potential hazards peculiar to it.
2. Ground all machines. If the machine is equipped with three-pin plug, it should be plugged into a three-pin electrical socket. Never remove the ground pin.
3. Do not abuse cord. Never use the cord to carry tools or pull the plug from an outlet. Keep cord away from heat, sharp edges or moving parts. Replace damaged cords immediately. Damaged cords increase the risk of electric shock.
4. Keep work area clean and well lit. Cluttered or dark work areas invite accidents.
5. Keep children away. All children should be kept away from the work area. Never let a child handle a tool without strict adult supervision.
6. Do not operate this tool if under the influence of alcohol or drugs. Read warning labels on prescriptions to determine if your judgment or reflexes are impaired while taking drugs. If there is any doubt, do not attempt to operate.
7. Use safety equipment. Eye protection should be worn at all times when operating this machine. Use ANSI approved safety glasses. Everyday eyeglasses only have impact resistant lenses. They are NOT safety glasses. Dust mask, non-skid safety shoes, hard hat, or hearing protection should be used in appropriate conditions.
8. Wear proper apparel. Loose clothing, gloves, neckties, rings, bracelets, or other jewelry may present a potential hazard when operating this machine. Please keep all apparel clear of the machine.
9. Don't overreach. Keep proper footing and balance at all times when operating this product.
10. Always disconnect the machine from the power source before making any adjustments, storing, servicing, or changing accessories. Such preventative safety measures reduce the risk of starting the tool accidentally.
11. Do not use the tool if the switch does not turn it on and off. Any tool that cannot be controlled with the switch is dangerous and must be repaired.
12. Check for damage. Check your tool regularly. If part of the tool is damaged it should be carefully inspected to make sure that it can perform its intended function correctly. If in doubt, the part should be repaired. Refer all servicing to a qualified technician. Consult your dealer for advice.
13. Keep away from flammables. Do not attempt to operate this tool near flammable materials or combustibles. Failure to comply may cause serious injury or death.
14. Store idle tools out of the reach of children and untrained persons. Tools may be dangerous in the hands of untrained users.

## WHEN INSTALLING YOUR PARTS WASHER

1. Assemble it according to the instructions given below.
2. Sit it on firm, flat, level surface in a well ventilated area and away from any open flames.
3. Fill only with a non-flammable water-based degreaser or cleaning agent, such as Simple Green to just below the level of the parts shelf (approximately 12 gallons).
4. Follow the degreaser manufacturer's instructions carefully.
5. Do not fill with flammable solvents such as kerosene, gasoline, etc.

## WHEN USING YOUR PARTS WASHER

1. Wear suitable protective clothing, gloves and goggles.
2. Clean off any accidental splashes of degreaser on skin immediately, following the degreaser manufacturer's instructions carefully. Seek medical attention if necessary.
3. Keep work area tidy and mop up any accidental spills of degreaser.

## WHEN NOT IN USE

1. Switch off pump, close the lid and disconnect from the electrical supply.
2. Disconnect from the electrical supply before carrying out any maintenance or cleaning on the parts washer.

**WARNING:** The pump of your parts washer may be damaged if you use solvents other than those listed above such as methyl ethyl ketone (MEK), perchloroethylene or trichloroethylene.

## ELECTRICAL CONNECTIONS

Plug into a standard 120 volt grounded plug.

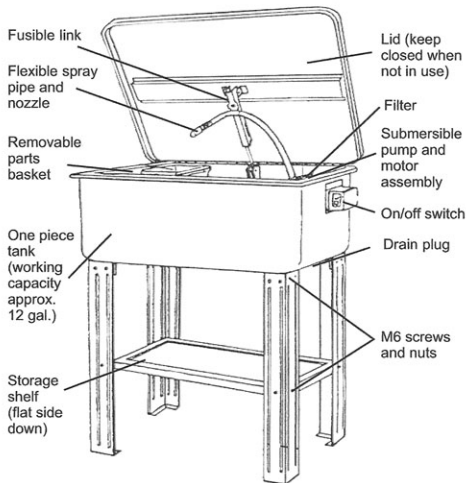
**WARNING:** This appliance must be grounded.

## ASSEMBLY INSTRUCTIONS

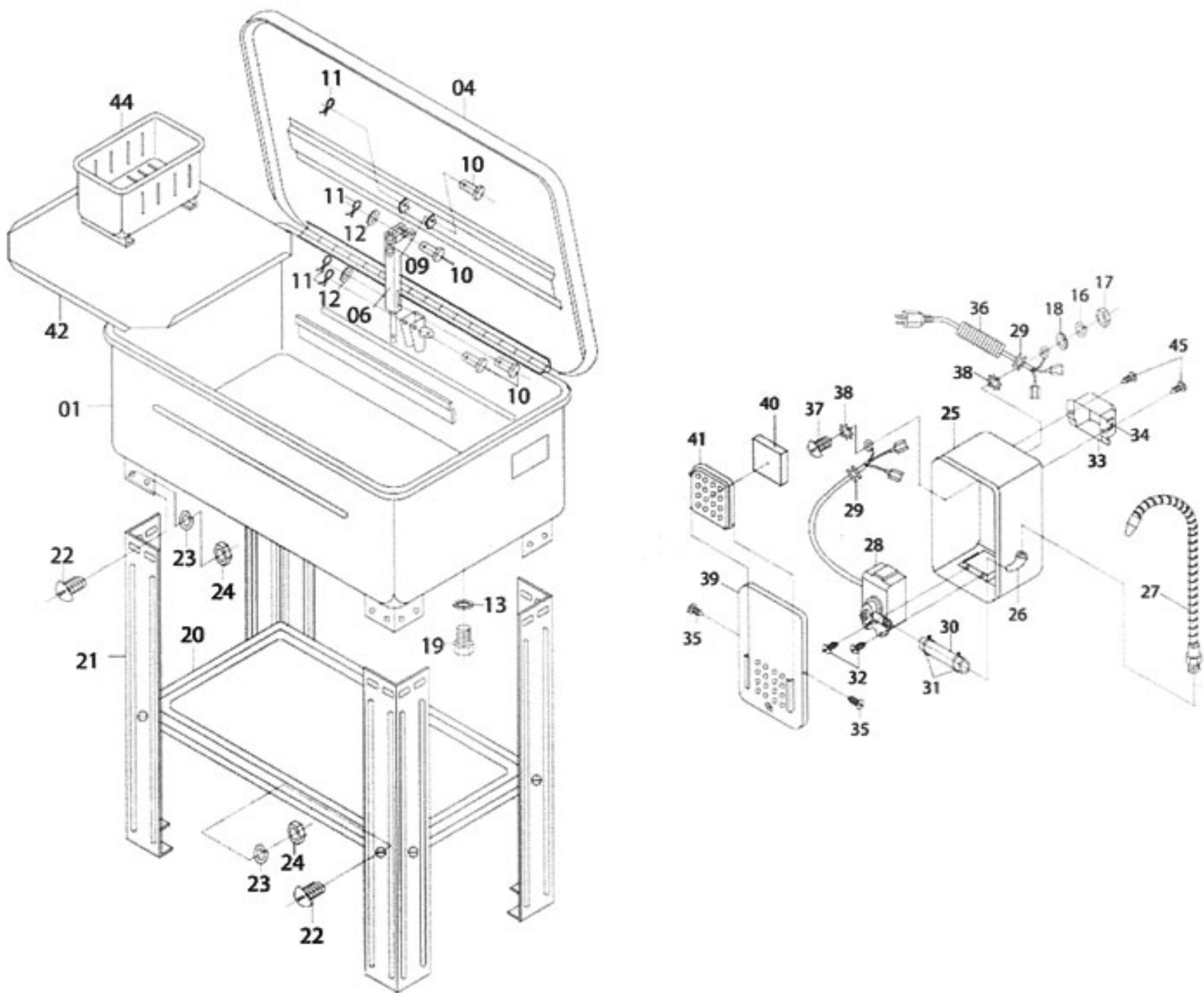
1. Remove machine from carton and inspect for any visual damage.
2. Remove parts inside the machine.
3. Lay clean and hard cardboard on the floor and lay machine on its lid. (Make sure you hold cover closed when laying machine on its lid.)
4. Mount four legs on brackets with M6X12 phillips head screws and M6 nuts. **NOTE: DO NOT TIGHTEN.**
5. Place lower shelf between legs with flat surface up and attach to legs with M6X23 phillips head screws and M6 nuts.
6. With legs pressed tight against lower shelf, tighten all screws to lower shelf.
7. Tighten all the screws installed in Step 4.
8. Stand machine up, being careful to hold lid closed.
9. Put work shelf and basket into the machine.
10. Remove Styrofoam packing from pump (see pump label for instructions) and mount pump assembly into slot on the side of the machine. Push down firmly on pump so that it seats itself onto side wall of tub. Place filter screen in position.
11. Thread the flexible nozzle into the elbow attachment on pump housing and firmly screw into place.
12. Plug machine into standard 120 volt 60 hz grounded outlet and fill with proper amount of fluid.
13. Turn switch on. Fluid should be flowing from the flexible nozzle.

## IMPORTANT

1. The lid incorporates a fusible link to close the lid in the event of a fire. This link is non-resetting and must be replaced once it has been triggered.
2. Clean the pump filter regularly by sliding it away from the pump housing and rinsing in clean degreaser.
3. Do not allow the level of liquid in the parts washer to fall below the pump inlet, as damage to the pump can result.



## PARTS LIST AND DIAGRAM



Part No.	Description	Qty.	Part No.	Description	Qty.	Part No.	Description	Qty.
4416 -01	Body	1	4416 -20	Shelf	1	4416 -32	Screw	1
4416 -04	Cover	1	4416 -21	Leg	4	4416 -33	Switch Box	1
4416 -06	Safety Lever	1	4416 -22	Bolt	24	4416 -34	Switch	1
4416 -09	Safety Plate	1	4416 -23	Spring Washer	24	4416 -35	Screw	2
4416 -10	Pin	4	4416 -24	Nut	24	4416 -36	Power Cord	1
4416 -11	Spring Pin	4	4416 -25	Pump Housing	1	4416 -37	Bolt	1
4416 -12	Washer	2	4416 -26	Elbow	1	4416 -39	Pump Housing Cover	1
4416 -13	O-Ring	1	4416 -27	Flexible Nozzle	1	4416 -40	Screen	1
4416 -16	Spring Washer	1	4416 -28	Pump	1	4416 -41	Cover Screen	1
4416 -17	Nut	1	4416 -29	Wire Holder	2	4416 -42	Work Shelf	1
4416 -18	Washer	1	4416 -30	Hose	1	4416 -44	Basket	1
4416 -19	Plug	1	4416 -31	Hose Clamp	2	4416 -45	Screw	2

THIS PARTS LIST AND LINE DRAWING ARE FOR REFERENCE ONLY.