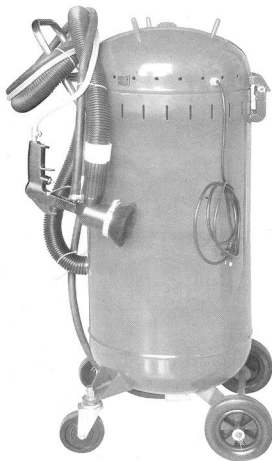


28GALLON ABRASIVE BLASTER WITH VACUUM

3005-0

INSTRUCTION MANUAL



READ ALL INSTRUCTIONS BEFORE OPERATING

SAVE THESE INSTRUCTIONS

Thank you for purchasing your Abrasive Blaster with Vacuum. Before attempting to operate your new Abrasive Blaster please read these instructions thoroughly. You will need these instructions for the safety warnings, precautions, assembly, operation, maintenance procedures, parts list and diagrams. Keep your invoice with these instructions. Write the invoice number on the inside of front cover. Keep the instructions and invoice in a safe, dry place for future reference.

WARNING: The warnings, cautions and instructions discussed in this instruction manual cannot cover all possible conditions or situations that could occur. It must be understood by the operator that common sense and caution are factors which cannot be built into this product, but must be supplied by the operator.

SPECIFICATIONS

Vacuum.....1200W(230V); 1100W(110V)
Blaster.....6-22.5CFM@115psi
Weight.....40kg

SAFETY RULES

1. Know your machine. Read this manual carefully. Learn the machine's applications and limitations, as well as specific potential hazards peculiar to it.
2. Ground all machines. If the machine is equipped with three-pin plug, it should be plugged into a three-pin electrical socket. Never remove the ground pin.
3. Avoid body contact with grounded surfaces such as pipes, radiators, ranges, and refrigerators. There is an increased risk of electric shock if your body is grounded.
4. Do not expose tool to moisture. Don't use this machinery in damp or wet locations. Keep out of rain.
5. Do not abuse cord. Never use the cord to carry tools or pull the plug from an outlet. Keep cord away from heat, sharp edges or moving parts. Replace damaged cords immediately. Damaged cords increase the risk of electric shock.
6. Remove adjusting keys or wrenches before turning the tool on. A wrench or key that is left attached to a moving part of the tool may result in personal injury.
7. Keep work area clean and well lit. Cluttered or dark work areas invite accidents.
8. Keep children away. All children should be kept away from the work area. Never let a child handle a tool without strict adult supervision.
9. Do not operate this tool if under the influence of alcohol or drugs. Read warning labels on prescriptions to determine if your judgment or reflexes are impaired while taking drugs. If there is any doubt, do not attempt to operate.

10. Use safety equipment. Eye protection should be worn at all times when operating this machine. Use ANSI approved safety glasses. Everyday eyeglasses only have impact resistant lenses. They are NOT safety glasses. Dust mask, nonskid safety shoes, hard hat, or hearing protection should be used in appropriate conditions.
11. Wear proper apparel. Loose clothing, gloves, neckties, rings, bracelets, or other jewelry may present a potential hazard when operating this machine. Please keep all apparel clear of the machine.
12. Don't overreach. Keep proper footing and balance at all times when operating this product.
13. Always disconnect the machine before making any adjustments, storing, servicing, or changing accessories. Such preventative safety measures reduce the risk of starting the tool accidentally.
14. Use clamps or other practical means to secure and support the work piece to a stable platform. Holding the work by hand or against your body may lead to a loss of control.
15. Do not force tool. Use the correct tool for your application. The correct tool will do the job better and safer at the rate for which it was designed.
16. Do not use the tool if the switch does not turn it on and off. Any tool that cannot be controlled with the switch is dangerous and must be repaired.
17. Check for damage. Check your tool regularly. If part of the tool is damaged it should be carefully inspected to make sure that it can perform it's intended function correctly. If in doubt, the part should be repaired. Refer all servicing to a qualified technician. Consult your dealer for advice.
18. Keep away from flammables. Do not attempt to operate this tool near flammable materials or combustibles. Failure to comply may cause serious injury or death.
19. Store idle tools out of the reach of children and untrained persons. Tools may be dangerous in the hands of untrained users.

ASSEMBLY INSTRUCTIONS

WARNING: Before operating read technical data and instructions for use.

1. Open carton and remove the following contents:
 - 1 plastic bag containing Instruction Manual.
 - 1 plastic bag containing Brush Head Assemblies.
 - 1 plastic bag containing Wheels, Castors and a smaller Hardware Bag.
 - 1 Wheel Axle
 - 1 Handle

- Lay carton on its side to take the unit out.
- Remove all packing materials from abrasive blaster. Release the two snap locks on the vacuum assembly and remove the vacuum head to take the Vacuum Hose and Abrasive Hose out.
- Install the castors and the wheels on the frame base. Install the handle on the tank.
- Fill 20-35 lbs. of abrasive into the bottom container.
- Reattach the vacuum head to the tank, making certain both snap locks are securely locked down.
- Insert the end of Vacuum Hose with Coupler into the tank, and screw the other end without coupler in the coupler on the brush head assembly. Install one end of the Abrasive Hose with a hose clamp on the end of the male air connector. Install the other end of Abrasive Hose with a hose clamp on the abrasive outlet manifold.

Note: Ideal operating air pressure is 115 psi.
DO NOT exceed 140 psi.

You are now ready to begin work with your Abrasive Blast/Vacuum.

OPERATING INSTRUCTIONS

- If protective head gear is not already in place, put it on now.
- Set air compressor to 115 psi. (More or less, depending on the surface to be cleaned.)
- Connect air hose coupling to air coupling connector located on gun handle.

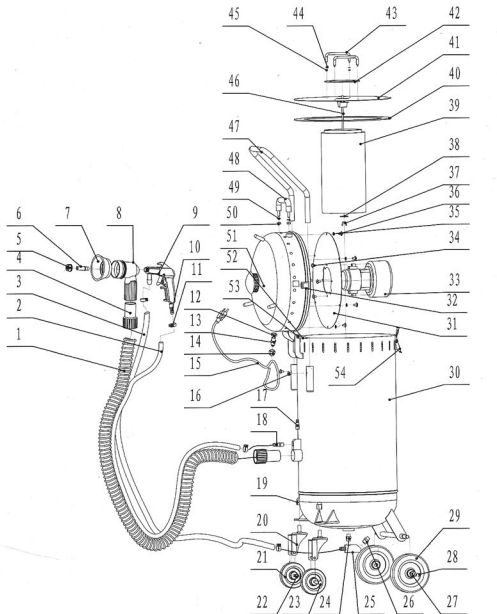
- Connect power cord to power source.
- With gun pointed at surface to be cleaned, turn the power switch on the vacuum head to the ON position.
- Have one hand holding the gun while the other hand holds the brush handle. Note: Do not apply pressure with the brush against the surface being cleaned! The brush function is only intended to prevent abrasive waste and to develop and maintain a closed vacuum cycle for the abrasive to be recycled. The brush is NOT intended to assist in the abrasion process.
- Move both hands in the direction where rust removal or pre-finish work is required.
- By lengthening or shortening the nozzle with the set nut, you will vary the size of the blast stream.
- The bristle brush is for flat surfaces and also for angles and corners. Before starting, spread out the bristles in such a way that it does not cover the jet spray inside the brush. (The abrasives will eventually wear out the bristles.) On car door edges, we recommend that you wrap the bristles around the edge, which will generate better vacuum, better coverage, safety, and results.
- After each job, lift off vacuum head and knock dust from the filter. After 1 hour of continuous blasting, lift out the vacuum head and blow off dust with direct air or vacuum.
- When blasting a 90 degree corner, align the gun at a 45 degree angle to reach the deepest area. Move the gun in a slow, circular motion for best results.

When finished with your Abrasive Blaster, unsnap the two retaining clamps, empty dust container and store the Abrasive Blaster in a safe, dry location.

TROUBLESHOOTING GUIDE

Symptom	Probable Cause	Possible Solution
Decrease in blast performance	<ol style="list-style-type: none"> Possible low air pressure Moisture in the abrasive Dirty Filter Abrasives are "worn" or too fine Gun Blockage 	<ul style="list-style-type: none"> Check air compressor and hose for leaks. Verify CFM input is compatible with blaster/vacuum Air must be clean and dry. Suggest airline filter. Clean filter thoroughly Change abrasive Disconnect air and power, unscrew nozzle and remove blockage with a paper clip or thin wire.
Decrease in vacuum performance	<ol style="list-style-type: none"> Dirty Filter Blocked or leaking vacuum line Insufficient air flow 	<ul style="list-style-type: none"> Clean filter thoroughly Inspect all vacuum lines for blockage or damage, clean or replace as necessary. Check CFM input at airline connector point.
Abrasive is coming out between the bristles of the brush	<ol style="list-style-type: none"> Too much air pressure Blockage in the vacuum system 	<ul style="list-style-type: none"> Check air pressure and adjust accordingly Inspect all vacuum lines for blockage or damage, clean or replace as necessary.

Note: keep machine clean for optimum performance.



1 vacuum hose	15 cable	29 6" wheel	43 small handle
2 air hose	16 bolt	30 abrasive tank	44 shockproof washer
3 abrasive hose	17 quick connector	31 motor's list	45 8 washer
4 coupler	18 air connector	32 switch	46 M4 nut
5 nozzle holding nut	19 nut	33 vacuum motor	47 handle
6 nozzle set	20 caster axle	34 screw	48 handle
7 brush head	21 caster	35 1.5 ring	49 8 washer
8 blast head	22 caster's nut	36 M6 screw	50 M8 nut
9 blast gun body	23 axle	37 nut	51 cover
10 air inlet fitting	24 abrasive adapter	38 flat washer	52 6 retaining ring
11 coupler	25 sand outlet pipe	39 filter	53 rotational axle
12 plastic nut	26 air adapter	40 rubber ring	54 latch
13 stain relief	27 + 12 washer	41 long bolt	
14 cable nut	28 + 12 retaining ring	42 under lift	