

# **KING TOOLS & EQUIPMENT**

---

## **OPERATORS INSTRUCTIONS & PARTS LIST**



**6" BENCH GRINDER**

**MODEL # 1080-0**

King Tools & Equipment Inc. - 1255 Acacia Street - Ontario, CA 91761

# READ INSTRUCTIONS BEFORE OPERATING

## SAVE THIS INSTRUCTION BOOK

Thank you for purchasing your King Bench Grinder. With the proper care and operation you will enjoy years of trouble free service from your King Bench Grinder. Please read this instruction manual and follow the directions carefully. You need this instruction book for operating instructions and the parts list. Keep it in a safe dry place. Staple your sale receipt to the front of the book in case you need it for warranty reasons.

### Warning:

The instructions and warnings in this instruction book can not cover every situation. The operator must use common sense and caution when operating this bench grinder.

## TABLE OF CONTENTS

DESCRIPTION	PAGE #
WARRANTY _____	1
SPECIFICATIONS _____	1
SAFETY INFORMATION/OPERATION _____	2
DESCRIPTION OF PARTS _____	3
ASSEMBLY _____	3
COMPONENTS _____	4
PART LIST _____	5

## WARRANTY

THIS PRODUCT IS WARRANTED AGAINST DEFECTS IN MATERIAL AND MANUFACTURING WORKMANSHIP FOR A PERIOD OF ONE YEAR. CONSUMABLE PARTS SUCH AS BULBS, WHEEL ETC ARE NOT COVERED UNDER THE WARRANTY. WE HAVE STRICT QUALITY CONTROL STANDARDS. HOWEVER, SOMETIMES A PRODUCT MAY GET SHIPPED THAT DOES NOT MEET OUR QUALITY STANDARDS.

IF YOU HAVE A PRODUCT THAT DOES NOT PERFORM PROPERLY IN THE FIRST 30 DAYS YOU CAN TAKE IT BACK TO THE RETAIL STORE WHERE YOU BOUGHT IT FOR A REFUND OR REPLACEMENT. AFTER 30 DAYS IT MUST BE SHIPPED TO KING AT THE FOLLOWING ADDRESS. BEFORE YOU RETURN THE PRODUCT CALL FOR AN AUTHORIZATION NUMBER. IF ALL YOU NEED IS A PART, THAT CAN BE SHIPPED TO YOU, NO CHARGE UNDER WARRANTY. IF YOU ARE MAKING A RETURN OR ORDERING A REPLACEMENT PART PROOF OF THE DATE OF PURCHASE WILL BE REQUIRED. RETURN SHIPMENTS MUST BE SENT POSTAGE OR UPS PAID.

### KING TOOLS & EQUIPMENT CUSTOMER SERVICE

800-950-5464 OR 909-930-6588

### SHIP TO: KING TOOLS & EQUIPMENT

1255 ACACIA ST.  
ONTARIO, CA 91761

PRODUCTS RETURNED WILL BE REPAIRED NO CHARGE IF THEY ARE UNDER WARRANTY AND HAVE NOT BEEN MODIFIED OR ABUSED. ONCE REPAIRED THEY WILL BE RETURNED POSTAGE PAID. IF THERE IS A CHARGE FOR ANYTHING YOU WILL BE CONTACTED WITH AN ESTIMATE. REPAIRS MUST BE PAID IN ADVANCE BY CREDIT CARD OR CHECK.

## SPECIFICATIONS

Motor _____	1/2 HP
RPM _____	3,550 RPM
AMPS _____	3.5
VOLTS _____	120 V
CYCLE _____	60 HZ
WHEEL SIZE _____	6 X 5/8"
BORE SIZE _____	1/2"

## IMPORTANT SAFETY INFORMATION

### WARNING:

Certain hazards are involved with the operation of all bench grinder. Always exercise caution and respect for the bench grinder. Follow all the SAFETY RULES to avoid personal injury and damage to property.

- 1) READ THE INSTRUCTION MANUAL CAREFULLY. Learn the bench grinder applications and limitations as well as the specific potential hazards unique to the bench grinder.
- 2) Do not operate power tools in explosive areas, such as in the presence of flammable liquids, gases or dust. Power tools create sparks which may ignite the dust or fumes.
- 3) Do not abuse the cord. Never use the cord to carry the tool or pull the plug from an outlet. Keep the cord away from heat, oil, sharp edges, or moving parts. Replace damaged cords immediately. Damaged cords increase the risk of electric shock.
- 4) Disconnect the power cord plug from the power source before making any adjustments, changing accessories or storing the tool. Such preventive safety measures reduce the risk of starting the tool accidentally.
- 5) CLEAN IS SAFE. Keep the work area clean and neat. Avoid clutter that could cause an accident.
- 6) DON'T WORK IN A DANGEROUS ENVIRONMENT. Don't use bench grinder in a wet, dark or slippery area.
- 7) CHILD PROOF THE WORKSHOP AREA. Lock the area, turn the power off, unplug the bench grinder.
- 8) KEEP AWAY. Don't let children or visitors near the bench grinder when they are in operation.
- 9) DON'T USE FORCE. The bench grinder is design to work at its own capacity. Don't force it to do something it was not designed to do.
- 10) WEAR PROPER CLOTHING. Loose clothes, gloves, neckties, bracelets may get caught in moving parts. Non slip shoes is recommended. Long hair should be contained.
- 11) WARE EYE PROTECTION. Wear impact resistant safety glasses when operating the bench grinder. Regular eye glasses are not impact resistant.
- 12) Wear EAR PLUGS. Protect your hearing by wearing ear plugs when operating loud noise bench grinder.
- 13) DON'T OVER REACH. Keep your balance at all times.
- 14) KEEP TOOLS IN GOOD CONDITION. Keep the blades sharp and clean. Follow the maintenance instructions.
- 15) ALWAYS DISCONNECT THE BENCH GRINDER. Unplug the bench grinder before servicing it or changing the accessories.

- 16) DAMAGE INSPECTION. Before operating the bench grinder check it for damage. If a guard is damaged replace it. If a moving part or major component is damaged have a qualified technician inspect it and replace it if necessary.
- 17) DO NOT STAND ON THE BENCH GRINDER. Do not stand on the bench grinder as it may cause damage or tip over.
- 18) NEVER OPERATE THE BENCH GRINDER. Never operate the bench grinder under the influence of drugs or alcohol.
- 19) KEEP THE LIGHTS ON. Make sure the work area is well lite, bright and not in a shadow.
- 20) USE RIGHT TOOL. Don't force small tool or attachment to do the job of a HD tools. Don't use tool for purpose not intended. For example, don't use circular saw for cutting tree limbs or logs.
- 21) AVOID UNINTENTIONAL STARTING. Don't carry tool before with finger on switch.
- 22) REPLACEMENT PARTS. When servicing using only identical replacement parts.
- 23) SAVE THESE INSTRUCTIONS FOR FUTURE REFERENCE.

## SAFETY RULES

**WARNING:** This machine must not be modified or used for any purpose other than for which it was designed.

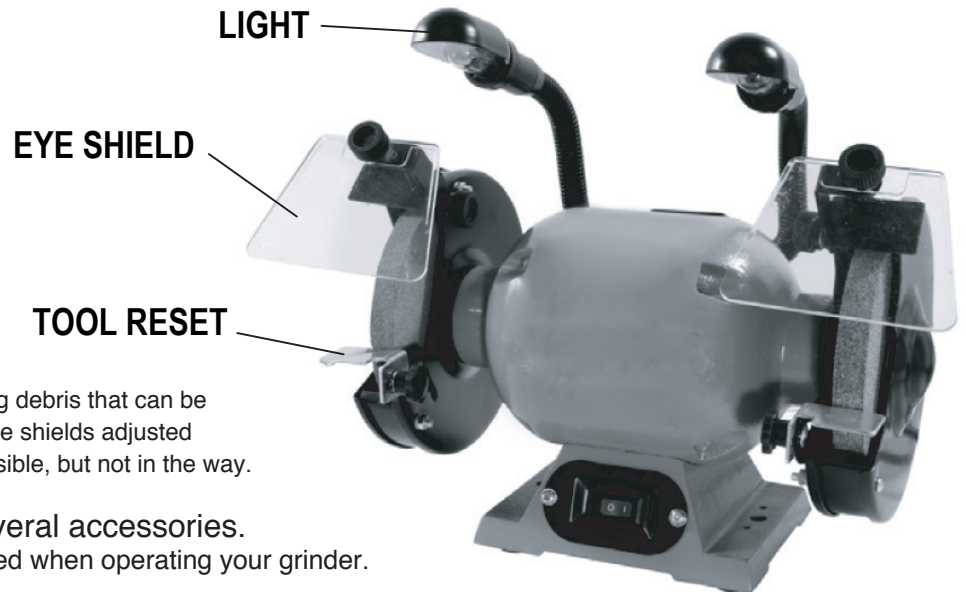
- 1) DO NOT OPERATE. You should not operate this bench grinder unless you are thoroughly familiar with Bench Grinder.
- 2) Do not operate the bench grinder until it is completely assembled.
- 3) Read and understand the operators manual before operating the bench grinder.
- 4) Make sure the proper electrical regulations are followed and the bench grinder is grounded.
- 5) Before turning the bench grinder on always
  - a) Make sure the work piece is properly secured
  - b) Make sure you don't have clothing that may get caught in the moving parts of the bench grinder.
- 6) Always use the correct speed for the type and thickness of material when you use this grinder.
- 7) Make all adjustments to the bench grinder with it turned OFF.
- 8) Never leave the Bench Grinder running while unattended.

## OPERATION

- 1) After switching the grinder on, allow it to reach full speed before commencing grinding operation.
- 2) The eyeshields are able to be adjusted and should be positioned to allow the operator a clear view of work through the shields.

3) The appropriate adjustments of tool rests will provide the correct working angle for efficient grinding. As the diameter of the grinding wheel is subject to wear, it will be necessary to re-adjust the tool rests positions to maintain the correct gap of less than 1.6mm (1/6") with the edge of the grinding wheel.

## ASSEMBLY



Eye shields can protect your eyes from flying debris that can be created while grinding and buffing. Keep eye shields adjusted so that they are as close to the work as possible, but not in the way.

Your new grinder comes with several accessories. Please use only the accessories included when operating your grinder.

The box includes two tool rests, two eye shields with brackets, two work lights, and two grinding wheels; one coarse grit, one medium grit. They are 6" X 5/8" grinding wheels. The 1 1/4" arbor hole is bushed down to 1/2", 5/8" or 3/4" depending on your grinder.



Fig. 1

Eye Shield Bracket



Fig. 2

Tool rest and bracket

**Fig. 1** (Attach eye shield bracket to the upper grinding wheel housing using hardware provided. Now attach eye shield to bracket.) Caution! Eye shields do not provide total protection for the eyes; for maximum safety, always wear safety goggles when using this bench grinder.

**Tool rests** help hold your work close to the grinding wheel and give the operator much more control when the work comes into contact with the wheel.

**Fig. 2** (Attach the simple tool rest as shown to the lower portion of the wheel housing.) The tool rest should be adjusted so that it is no more than 1/8" from the wheel. This is so the work doesn't slip down between the wheel and the housing.

**Lights** are designed to shine directly over the eye shield to light up the work area. The lights are fastened to flexible arms so they can be adjusted to any position.

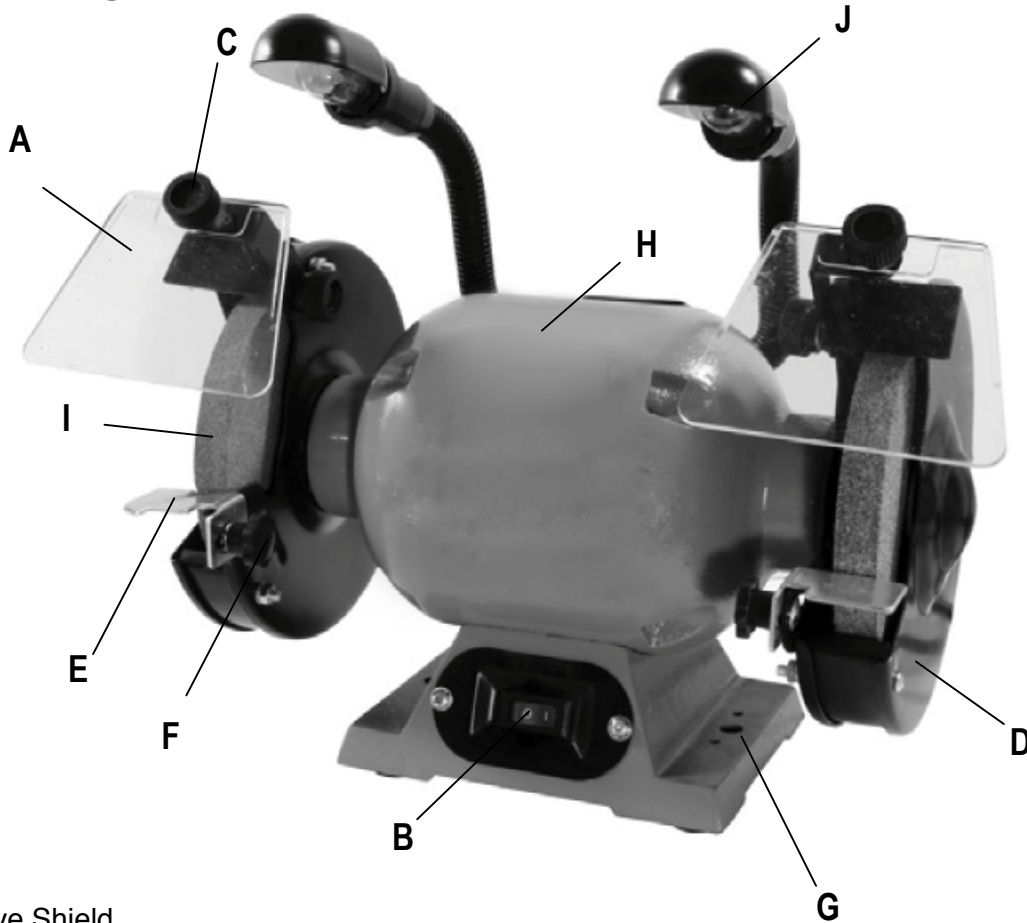
**The Base** is mounted to the grinder and is designed to sit on a work bench or suitable work surface. It can be mounted to a floor base (not included) or a table. There are screw holes in the base for this purpose.

**To change or replace the wheels, follow these simple steps.** Disconnect the power cord from the wall outlet. The eye shield is fastened to the grinder by a simple knurled thumb screw. Remove the eye shield by removing the screw. Now the bracket for the eye shield can be removed. Remove the tool rests in the same manner by removing the knurled thumb screw. Next remove the cover on the end of the grinder, this completely exposes the grinding wheels. Now the grinding wheel can be removed with a simple adjustable wrench.

## PACKAGE CONTENTS

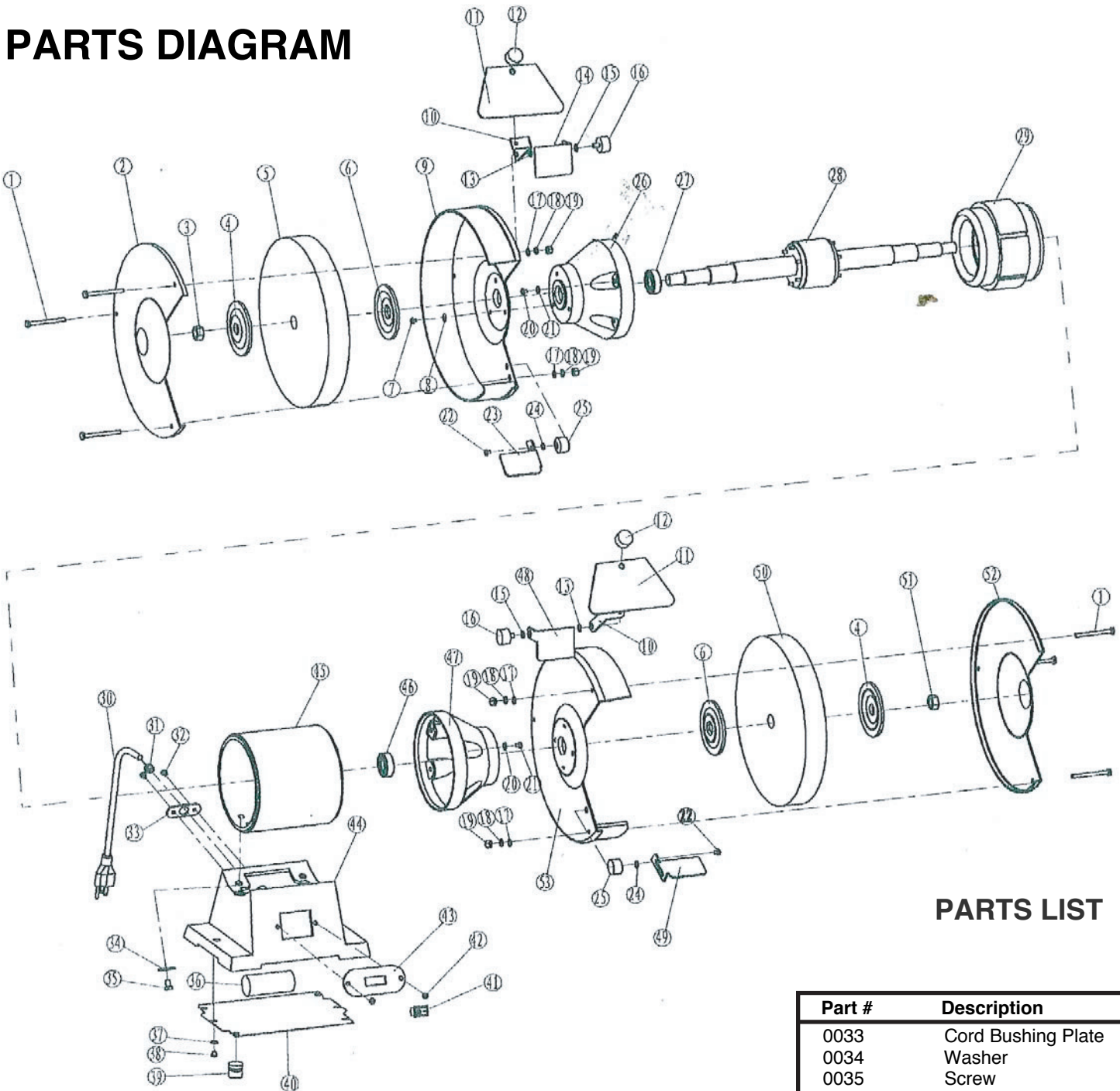
- Bench Grinder
- 2 Grinding Wheels (One Course and One Medium)
- 2 Tool Rests
- 2 Eye Shields

## COMPONENTS



- A) Eye Shield
- B) Power Button
- C) Eye Shield Adjustment
- D) Wheel Guard
- E) Tool Rest
- F) Tool Rest Adjustment
- G) Mounting Holes
- H) Bench Grinder
- I) Grinding Wheel
- J) Adjustable Lights

# PARTS DIAGRAM



## PARTS LIST

Part #	Description
0001	Bolt
0002	Left Wheel Cover
0003	Left Lock Nut
0004	Outer clamp washer
0005	Wheel
0006	Inner Clamp Washer
0007	Screw
0008	Washer
0009	Left Wheel Guard
0010	Eye Shield Mount
0011	Eye Shield
0012	Knob
0013	Serrated Washer
0014	Left Spark Guard
0015	Washer
0016	Knob

Part #	Description
0017	Flat Washer
0018	Spring Washer
0019	Nut
0020	Screw
0021	Washer
0022	Screw
0023	Left tool rest
0024	Washer
0025	Tool Rest Knob
0026	End Bell
0027	Bearing
0028	Rotor
0029	Stator
0030	Cord and plug
0031	Cord Bushing
0032	Screw

Part #	Description
0033	Cord Bushing Plate
0034	Washer
0035	Screw
0036	Capacitor
0037	Washer
0038	Screw
0039	Rubber foot
0040	Base Plate
0041	Switch
0042	Screw
0043	Switch Plate
0044	Base
0045	Stator Housing
0046	Bearing
0047	End Bell
0048	Right Spark Guard
0049	Right Tool Rest
0050	Wheel
0051	Right Lock Nut
0052	Right Wheel Cover
0053	Right Wheel Guard