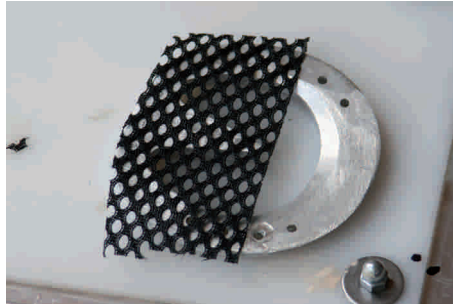


Hoof Pads

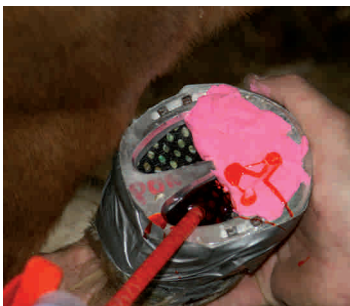
Size: 178 ml



In all cases make sure the cavity of the frog is clean and free of any loose material. Be certain no anaerobic bacteria are present. In this case the hoof is affected by Laminitis, so the Hoof Pad is applied only to the back of the hoof. Glue or nail the shoe to the hoof inserting a piece of mesh in between.



Block out the space forward of the apex of the frog with Play-Dough or similar material.



Fill the cavity through the mesh with Hoof Pad.

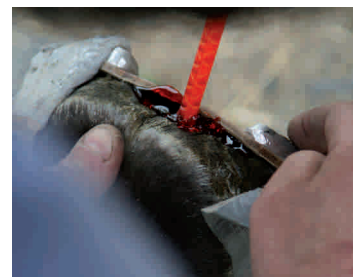
equimix



After just 1 minute the Play-Dough material can be removed and the hoof placed on the ground. Hoof Pad provides support to the frog.



Hoof Pad can also be used under a leather sole. Clean and dry the frog. Glue or nail the shoe to the hoof with the leather sole between, into which two holes have been drilled.



Inject Hoof Pad through the holes in between the sole and the frog.



Hoof Pad is available in two different hardnesses, Comfort Pad (Shore A 40) and Hoof Pad (Shore A 60).

Hoof Pad absorbs shock and pounding, and gives support and protection for flat-footed or thin-soled horses. Hoof Pad leaves the frog in perfect condition.



Hoof Pad

Comfort Pad



Inchimica
Division of Prospero s.r.l.

Via Emidio Villa, 17
42124 - Reggio Emilia (RE), Italy
Ph.: +39 0522 506161
Fax: +39 0522 920553
inchimica@imm-group.net

www.equimix.net