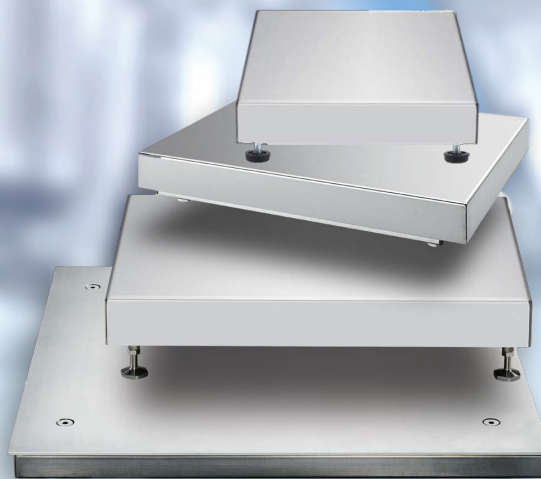


Combics Complete Scales

Highest quality components delivered ready to weigh



German Quality



Combics Complete scales represent the top of the line where accuracy and pharmaceutical level quality meet. The built-in check weighing lights deliver speed with high resolution for demanding industrial applications. Data collection and process equipment feedback are provided by field bus interfaces Profibus DP, 4-20 mA and Modbus TCP options.

The right solution for the following:



Weighing



Counting



Filling and dosing



Formulation



Fill quantity control



Classification

Indicator Specifications



CAW2P1U-50DD-I

Standard Applications

Parts counting	6 product ID fields
Percentage weight	2 header fields
Averaging	Time/date (US & 24 hour)
Checkweigh/classification	Minimum sample (SQmin)
Totalizing	Print formatting
Net total	ISO calibration test

Standard Features

23 keys (incl. numeric keyboard)
14 segment 20mm backlit display
10 weight updates per second
3 switchable weight units (20 total)
3 prong grounded AC wall plug
1 RS232 interface (2nd RS232 opt.)

Complete Scales

Powder Coated Steel	Capacity x Readability	Capacity x Readability	Weighing platform dimension	Load platform construction & protection	Number of load cells	Sub-frame construction & protection	Length of load cell/home run cable	Indicator construction & protection	Approx. ship weight
Model Number	Kg	Pounds	Inches	IP67(removed)	Aluminum	IP65	Feet	IP67	Pounds
CAW2P1U-10CC-I	6 x 0.002	15 x 0.005	10 x 10	304 stainless	1	powder coated	10	304 stainless	20
CAW2P1U-50DD-I	30 x 0.001	60 x 0.002	12 x 12	304 stainless	1	powder coated	10	304 stainless	24
CAW2P1U-100EE-I	60 X 0.002	150 x 0.005	18 x 18	304 stainless	1	powder coated	10	304 stainless	65
CAW2P1U-250GG-I	150 x 0.005	300 x 0.01	24 x 24	304 stainless	1	powder coated	10	304 stainless	120

Stainless Steel	Capacity x Readability	Capacity x Readability	Weighing platform dimension	Load platform construction & protection	Number of load cells	Sub-frame construction & protection	Length of load cell/home run cable	Indicator construction & protection	Approx. ship weight
Model Number	Kg	Pounds	Inches	IP67 (in place)	Stainless	IP67	Feet	IP67	Pounds
CAW2S1U-10CC-I	6 x 0.002	15 x 0.005	10 x 10	304 stainless	1	304 stainless	10	304 stainless	22
CAW2S1U-50DD-I	30 x 0.001	60 x 0.002	12 x 12	304 stainless	1	304 stainless	10	304 stainless	30
CAW2S1U-100EE-I	60 X 0.002	150 x 0.005	18 x 18	304 stainless	1	304 stainless	10	304 stainless	68
CAW2S4U-250GG-I	150 x 0.005	300 x 0.01	24 x 24	304 stainless	4	304 stainless	10	304 stainless	127

Optional Interfaces

UniCOM

2nd RS232 interface	YDO02C-232
RS485 or RS422 interface	YDO02C-485
Digital 5 Input / 5 Output opto Isolated	YDO02C-DIO
Analog output, 0-20 mA, 4-20 mA, 0-10V, 16-bit	YDO02C-AO
Profibus DP module	YDO02C-DP
DeviceNet Interface	YDO02C-DN
Ethernet TCP/IP with Modbus TCP	YDO02C-ETH

WP1

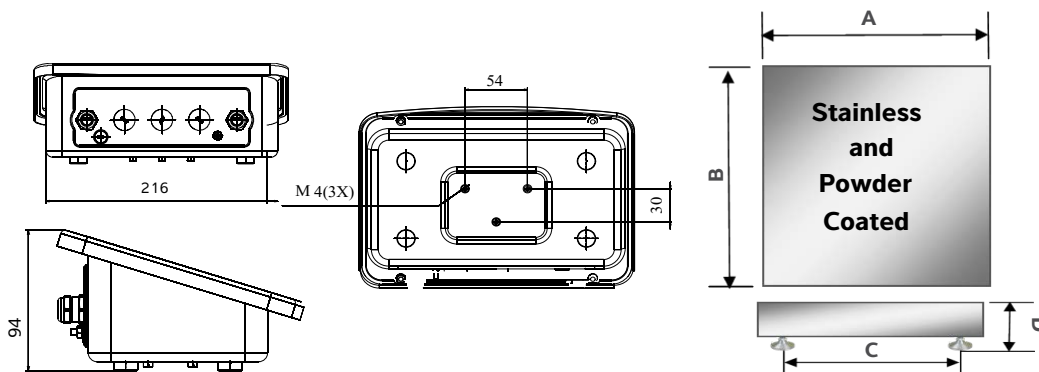
RS232/485 for direct connection to digital platform	YDI02C-WPD
---	------------

WP2

RS232/485 for direct connection to digital platform	YDI02C-WPD
RS232/485 for direct connection to digital platform	YDI02C-WP10

Accessory Hardware

43 inch floor mounted column	YDH03CISUS
4-leg base for floor mounted column	YBP03CIS
Post mount assembly for 10" x 10" platforms.13" high	YDH01CWSUS
Post mount assembly for 12" x 12" platforms.19" high	YDH02CWSUS
Post mount assembly for 18" x 18" platforms. 29" high	YDH03CWSUS
Bench mount bracket	YDH12CWSUS
Wall mount bracket	YDH02CISUS
Panel mount bracket	YAS03MI
24 volt DC power supply	YAS02MI
Indicator dust covers (2 units)	YDC01CI
Quick connect kit for connecting base to indicator	YAS99I
COM port strip printer, cable not included	YDP21
Thermal transfer label printer for pharmaceutical	ZD420T



Model Size	A	B	C	D
"CC"	10"	10"	7.75"	3-4"
"DD"	12"	12"	9.75"	3-4"
"EE"	18"	18"	15.75"	3-4"
"GG"	24"	24"	21.75"	5-6"

The technical data given serves as a product description only and should not be understood as guaranteed properties in the legal sense.

Specifications subject to change without notice. Rev.10/19

Minebea Intec USA, Inc.
1180 Lincoln Ave.
Holbrook, NY 11741
Phone 866-963-8587
www.minebea-intec.com