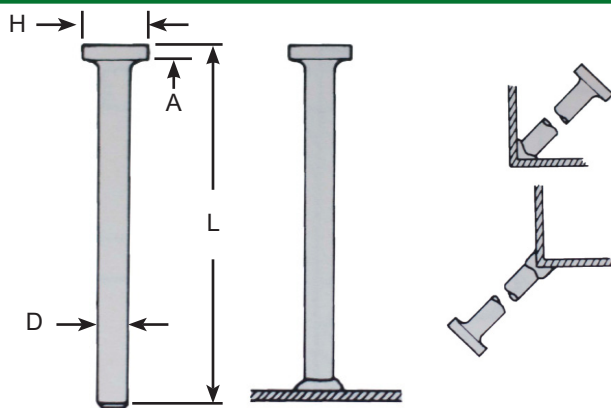
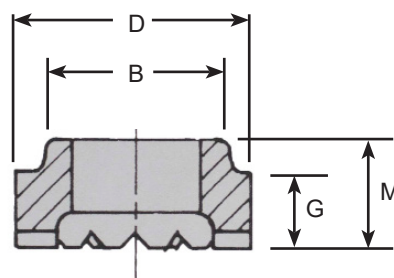


# SHEAR CONNECTOR<sub>SC</sub>

## STUD SPECIFICATIONS



## FERRULE SPECIFICATIONS



D	A	H	TYPE	D	B	G	M
$\frac{3}{4}$	$\frac{3}{8}$	$1\frac{1}{4}$	FLAT	1.215	1.030	.469	.656
			WELD THRU DECK	1.338	1.210	.400	.587
$\frac{7}{8}$	$\frac{3}{8}$	$1\frac{3}{4}$	FLAT	1.408	1.210	.545	.732

## WEIGHTS AND PACKAGING FOR STANDARD LENGTHS

DESC	POUNDS M PIECES	PIECES BOX	POUNDS BOX	DESC	POUNDS M PIECES	PIECES BOX	POUNDS BOX
$\frac{3}{4} \times 3\text{'}$	480	125	60	$\frac{3}{4} \times 6\text{'}$	850	60	51
$\frac{3}{4} \times 3\frac{1}{2}\text{'}$	513	125	64	$\frac{3}{4} \times 7\text{'}$	1020	60	61
$\frac{3}{4} \times 3\frac{1}{2}\text{'}$	568	100	57	$\frac{3}{4} \times 8\text{'}$	1112	50	56
$\frac{3}{4} \times 4\text{'}$	600	100	60	$\frac{7}{8} \times 3\text{'}$	726	100	73
$\frac{3}{4} \times 4\frac{1}{2}\text{'}$	625	100	63	$\frac{7}{8} \times 4\text{'}$	810	100	81
$\frac{3}{4} \times 4\frac{1}{2}\text{'}$	707	75	53	$\frac{7}{8} \times 5\text{'}$	1000	60	60
$\frac{3}{4} \times 5\text{'}$	740	75	56	$\frac{7}{8} \times 6\text{'}$	1140	50	57
$\frac{3}{4} \times 5\frac{1}{2}\text{'}$	775	75	58	$\frac{7}{8} \times 7\text{'}$	1300	100	130
$\frac{3}{4} \times 5\frac{1}{2}\text{'}$	800	75	60	$\frac{7}{8} \times 8\text{'}$	1510	100	151

**HEADED ANCHOR STUDS:** Designed to effectively tie the concrete to the steel beams and to resist shear loadings between the concrete slab and steel beam in composite construction.

**DIAMETER:** Available in diameters from  $\frac{3}{4}$ " through  $\frac{7}{8}$ ".

**LENGTH:** Length is before weld. Studs will be approximately  $\frac{3}{16}$ " shorter after weld. Lengths for shear connector studs are generally set by governing specifications.

**AWS:** All shear connector studs meet AWS specifications including AWS D1.1 and CSA W59 specifications. Test reports available on request.

**MILD STEEL:** Low carbon steel, ASTM A29/A108, 1010-1020.

Mechanical Properties (as cold drawn):

Tensile: 60,000 psi min.

Reduction in Area: 50% min.

**STAINLESS STEEL:** Type 304 is the most commonly used.

Other grades of stainless steel (except Type 303) are available when required.

**FERRULES:** All orders for studs include required ferrules.

**FLUX:** Studs are solid fluxed.



HANLON STUD WELDING

1157 PAGNI DRIVE

ELK GROVE VILLAGE, IL 60007

PHONE: 847-228-1990 • Toll Free: 1-800-HANLONS (426-5667) • FAX: 847.228.1995

[www.hanlonstudwelding.com](http://www.hanlonstudwelding.com)