

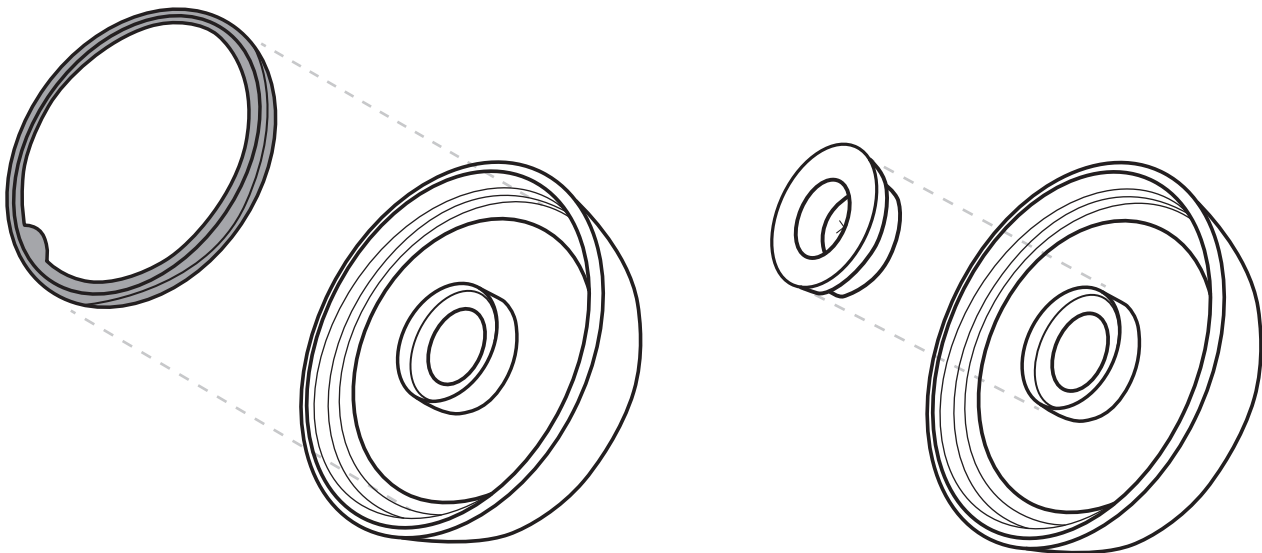
STANDARD STRAW TUMBLER LID O-RING INSTALLATION INSTRUCTIONS

CONTENTS

- 1 Standard Straw Tumbler Lid O-Ring (1 Large)
- 1 Standard Straw Tumbler Lid Gasket

INSTALLATION

- 1** Remove existing O-Ring from the Standard Straw Tumbler lid by gently pulling on the tab.
- 2** Place the new O-Ring into the bottom of the lid, flat side down. Gently press the O-Ring until it is neatly seated into the O-Ring groove.
- 3** Remove the Gasket from the Standard Straw Tumbler lid by pressing firmly on Gasket from the top of the lid. The Gasket should slide through the lid and come out the bottom.
- 4** Place the new Gasket with the flat side up, into the hole on the inside of the lid. Firmly press down on the Gasket until it is flush with the lid.



O-Ring (Lid)

Gasket