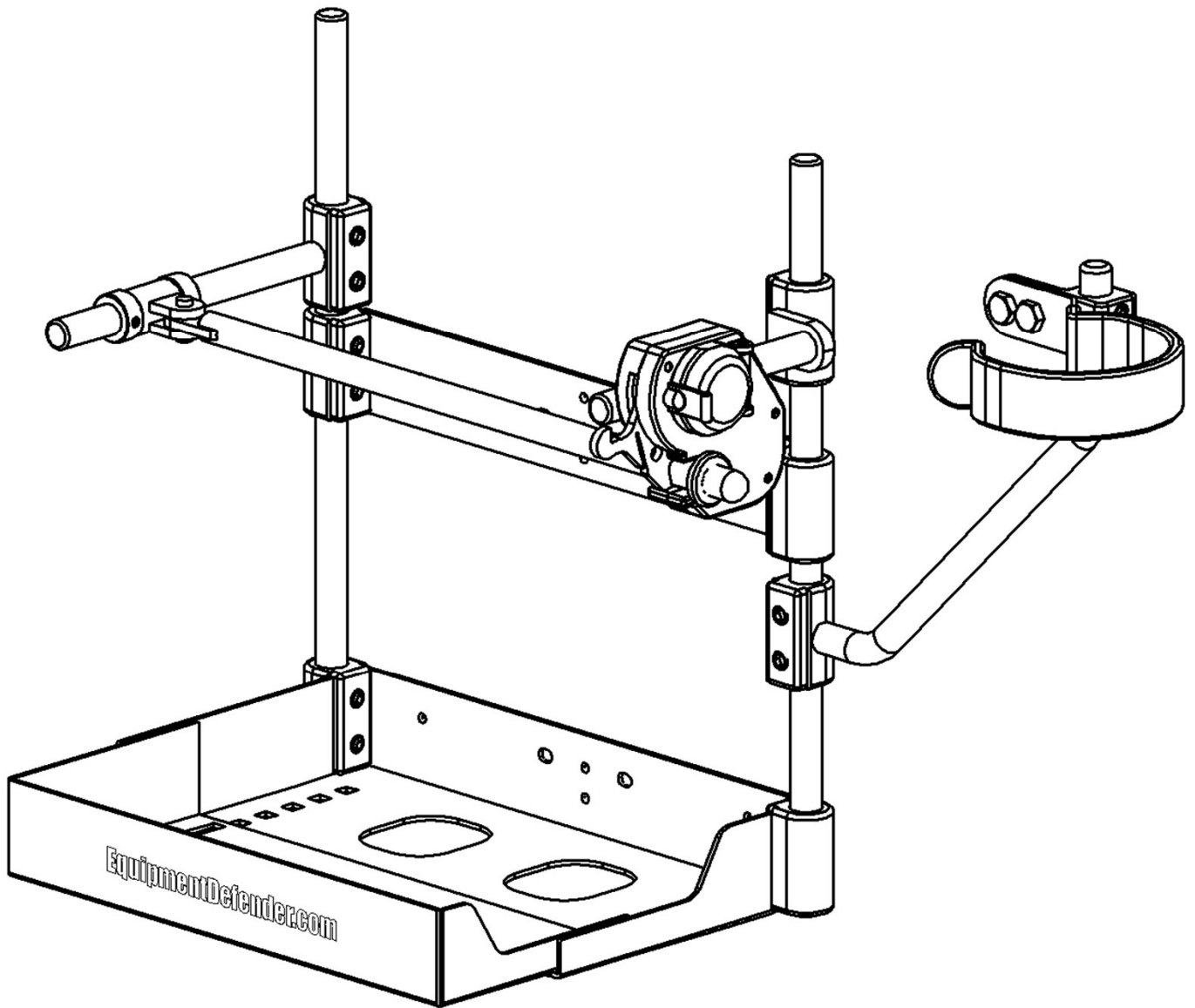


Equipment Defender

Mist Blower Rack

Assembly Instructions

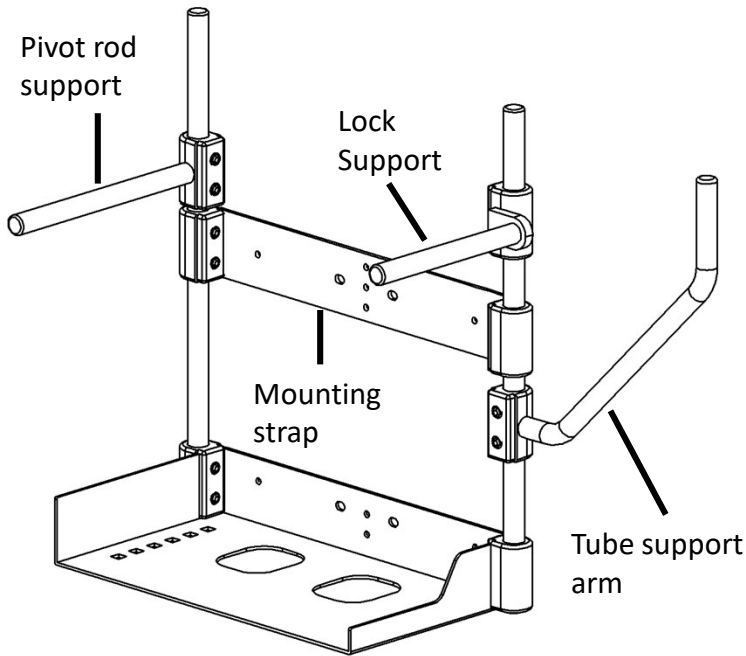
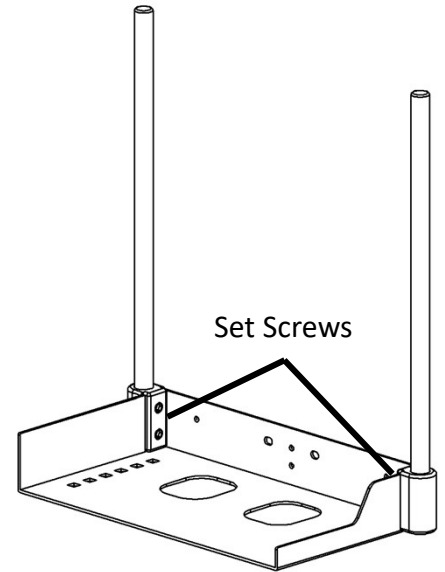


Mist Blower Rack Instructions

- Make sure all set screws are VERY tight.
- Note: If you wish to achieve maximum security set screws heads can be filled with epoxy.

Step 1

Install the two long rods into the base and tighten the 4 set screws that secure them.



Step 2

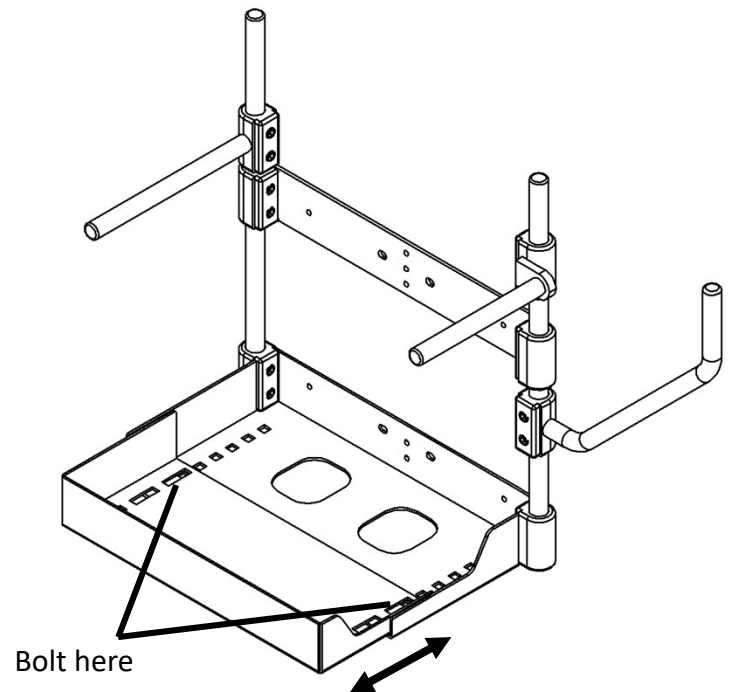
Install the four components as shown. Leave the setscrews loose for now.

Note: If you are mounting the rack on an enclosed trailer you might not want to use the tube support arm because the tube holder can be mounted directly onto the trailer wall.

Step 3

Place your mist blower into the rack to determine where the base front will be positioned.

Use two short carriage bolts to attach the base front. Note: The mist blower should slide easily into the base without a lot of extra space. Use hardware packet labeled: Mounting Hardware.

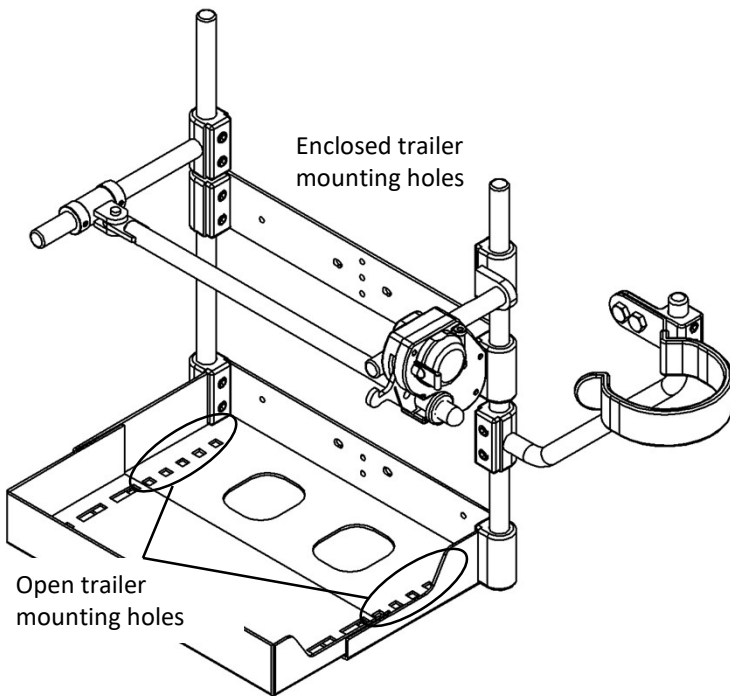
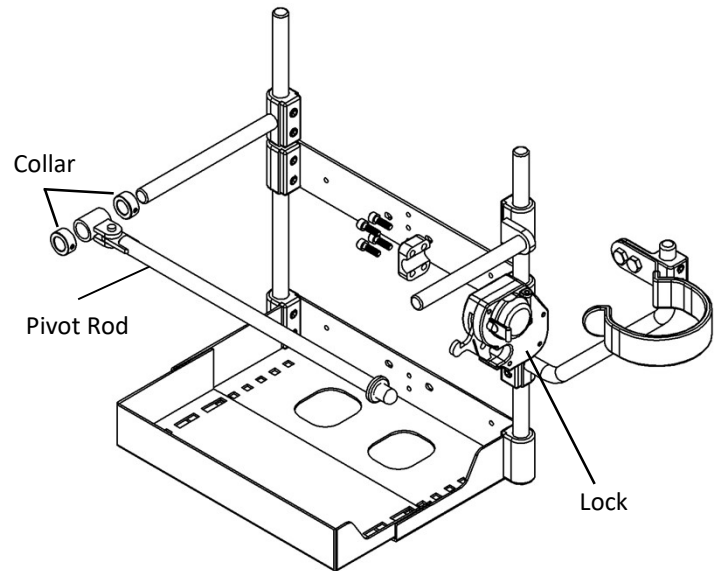


Step 4

- Install the pivot rod.
- Install lock.
- Install tube holder.

Note: The tube holder can be lengthened by flipping the mounting bracket

Leave everything loose for now so it can be adjusted to fit the mist blower.



Step 5

Mount the rack onto your open or enclosed trailer.

For open trailers drill a 27/64" hole and bolt directly to the trailer rail using the carriage bolts.

For enclosed trailers use the self drilling/tapping screws and screw through the plywood and into the trailer frame.

Step 6

Adjust the rack to fit the equipment, the pivot rod goes between the blower housing and the tank. After adjusting test the rack to be sure the equipment can't be pulled out.

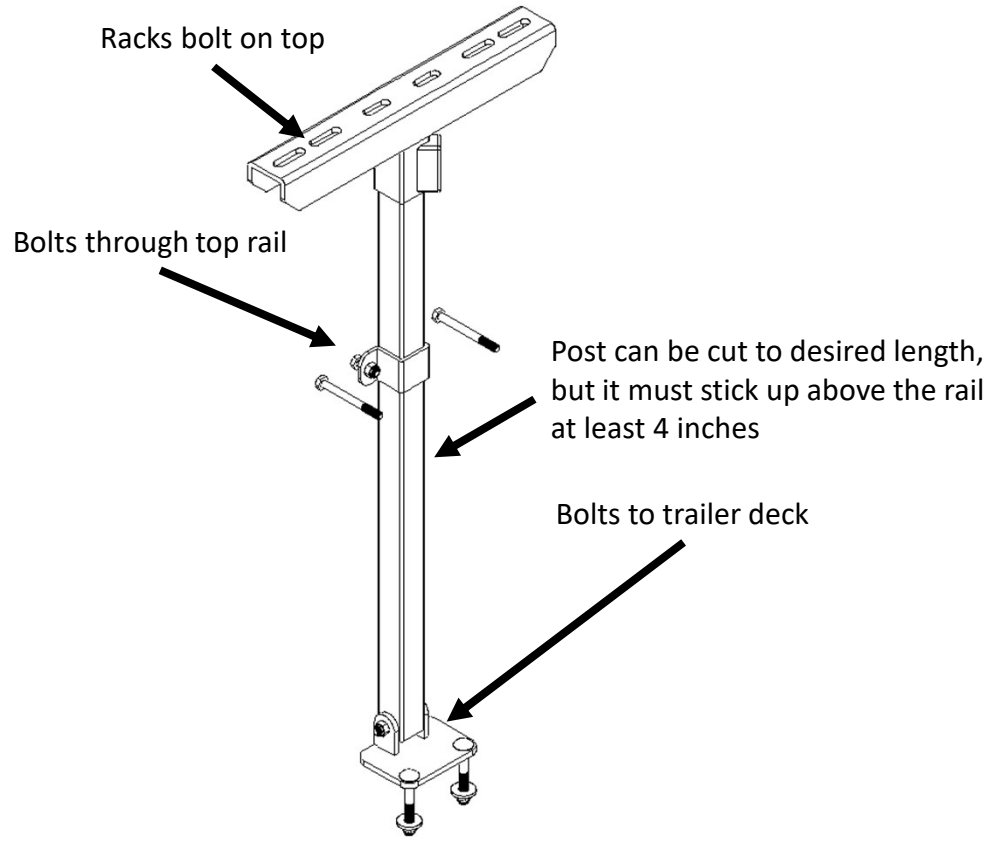
Adjust the tube holder.

Note: If you are mounting the rack on an enclosed trailer you might not want to use the tube support arm because the tube holder can be mounted directly onto the trailer wall.

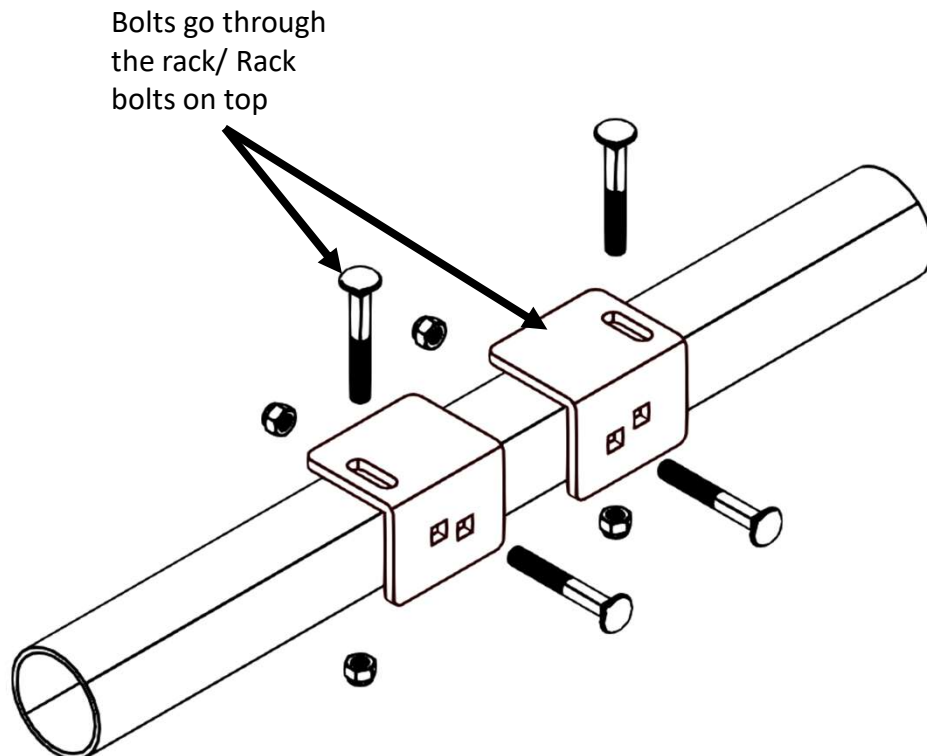


Open Trailer Mounting Post (sold separately)

This mounting post is a great option for trailers with weak top rails.



Round Rail Brackets (sold separately)

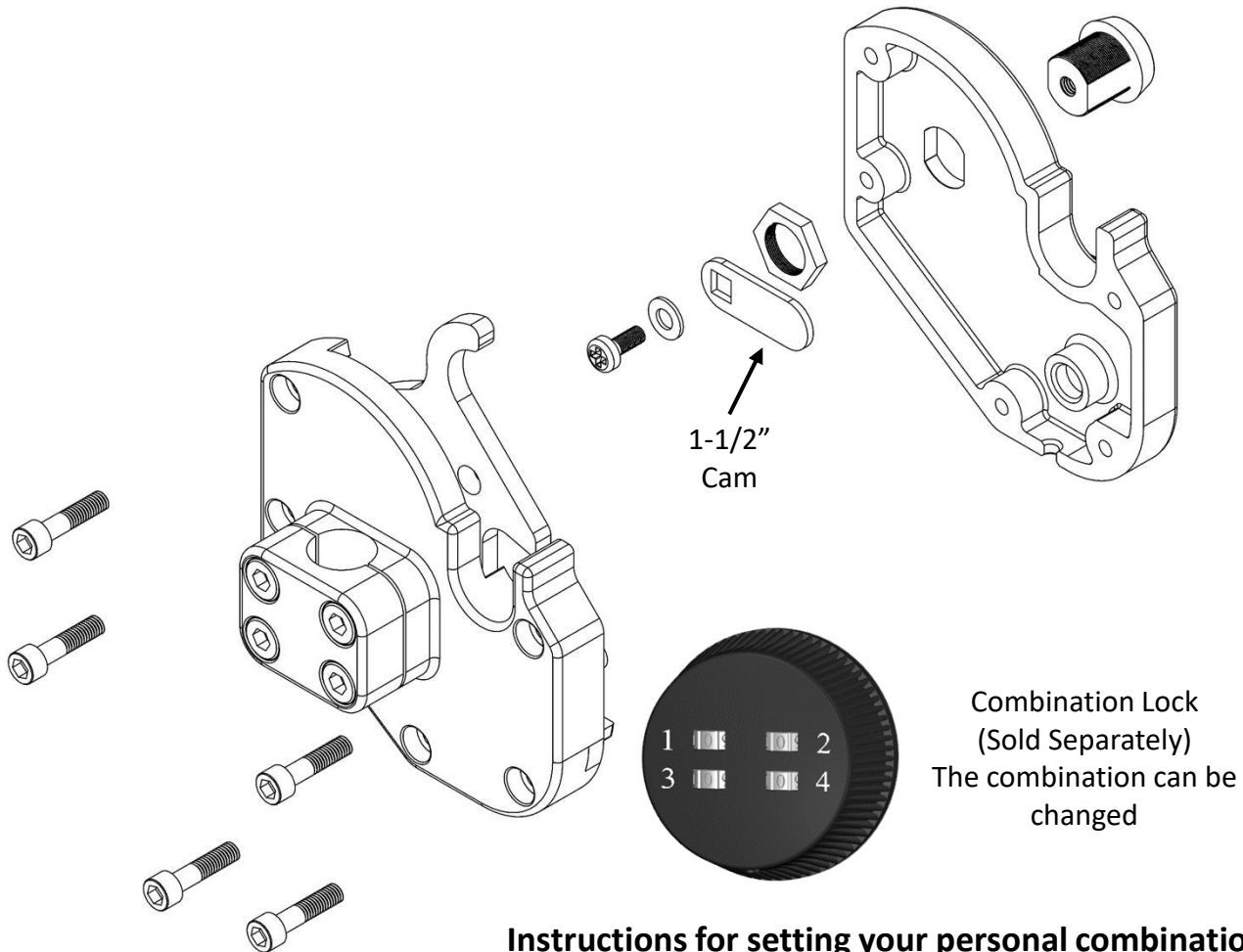


Changing the lock

Equipment Defender offers a combination lock (sold separately.)

1. Remove the screws that hold the two sides of the lock housing together. This will require a tamper resistant tip hex wrench (included)
2. Remove the existing lock.
3. Install the new lock.

Note: If you wish to achieve maximum security bolt/screw heads can be filled with epoxy.



Instructions for setting your personal combination:

- The combination is factory set at >>0-0-0-0<<
- Combination must be on opening number prior to resetting
- On the underside outer edge of the lock there is a hole for the code reset button. Rotate the face of cam until the code reset button comes into view.
- Push this pin in with a paper clip and keep it pushed in
- Set your personal combination by turning the dials to the desired combination – starting with the dial marked '1', and moving to '2', '3', and then '4'.
- Release the reset button and your combination is set.
- To lock, rotate lock to "locked" position. Rotate one or more dials after lock is closed. To open the lock, turn dials to your personal combination.