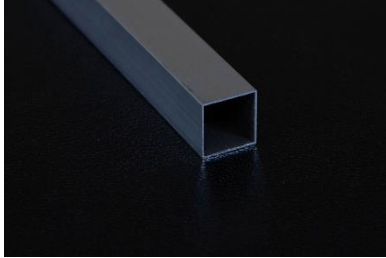


# Zen Habitats Enclosure Stand Assembly Instructions

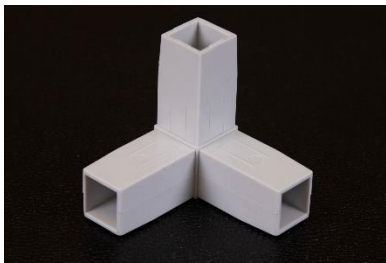
## Parts list:

**Part A** (4) – 46” Aluminum Frame

**Part B** (8) – 22” Aluminum Frame



**Part C** (8) – Pressure corners (with 3 prongs)

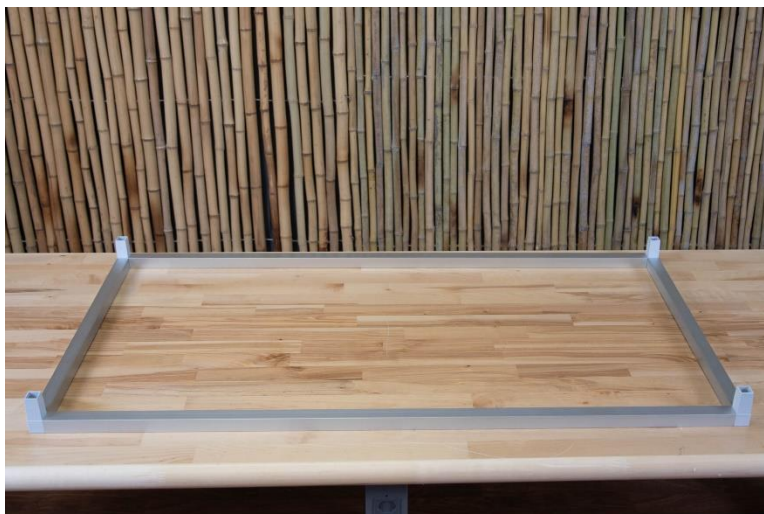


## Assembly

Video instructions also available at <https://www.zenhabitats.com/pages/enclosure-stand-assembly>

### Step 1 – Assemble Bottom

- Attach the pressure corners (Part C) to each end of two 22” aluminum frames (Part B). Make sure that the fingers of the pressure corners are facing the same direction on both sides.
- Attach two 46” aluminum frame (Part A) to the pressure corners already connected to Part C. Make sure they are facing the same direction.
- Attach the other side frame, with the two pressure corners already connected, to the assembled frame. You should now have a rectangle shaped floor with four fingers facing up.



## Step 2 – Assemble Back and Sides

- Attach four 22" aluminum frame (Part B) pieces to the pressure corners (Part C) on each corner of the base.



## Step 3 – Assemble Top

- Attach the pressure corners (Part C) to each end of two 22" aluminum frames (Part B). Make sure that the fingers of the pressure corners are facing the same direction on both sides.
- Attach two 46" aluminum frame (Part A) to the pressure corners already connected to Part C. Make sure they are facing the same direction.
- Attach the other side frame, with the two pressure corners already connected, to the assembled frame. You should now have a rectangle shaped floor with four fingers facing up.
- Flip over and attach to the base frame.

