

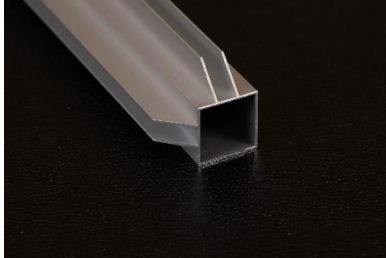
Zen Habitats Deluxe Stacking Spacer Assembly Instructions

Parts list:

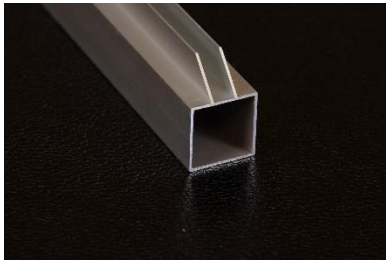
Part A (2) – 46" Aluminum Frame (2 channels at 90-degree angle)

Part B – A (4) – 22" Aluminum Frame (2 channels at 90-degree angle)

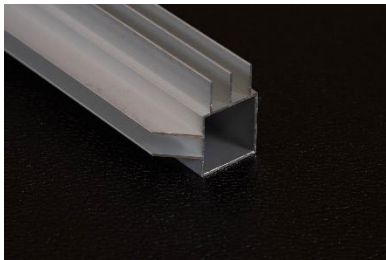
Part B – B (2) – 10" Aluminum Frame (2 channels at 90-degree angle)



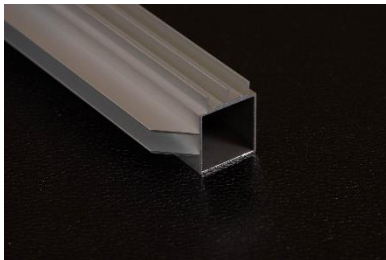
Part C (2) – 10" Aluminum Side Door Frame (1 channel)



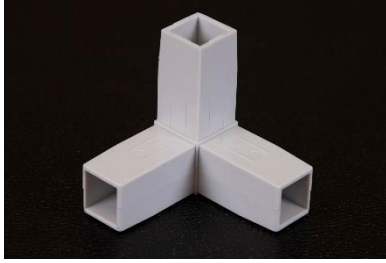
Part D (1) – 46" Aluminum Top Door Frame (1 channel and 1 double 3/4" top door rail)



Part E (1) – 46" Aluminum Bottom Door Frame (1 channel and 1 double 1/4" bottom door rail)



Part F (8) – Pressure corners (with 3 prongs)



Part K (2) – 22"x10" Bamboo Lined Wood Side Panels

Part L (2) – Bamboo Lined Wood Doors

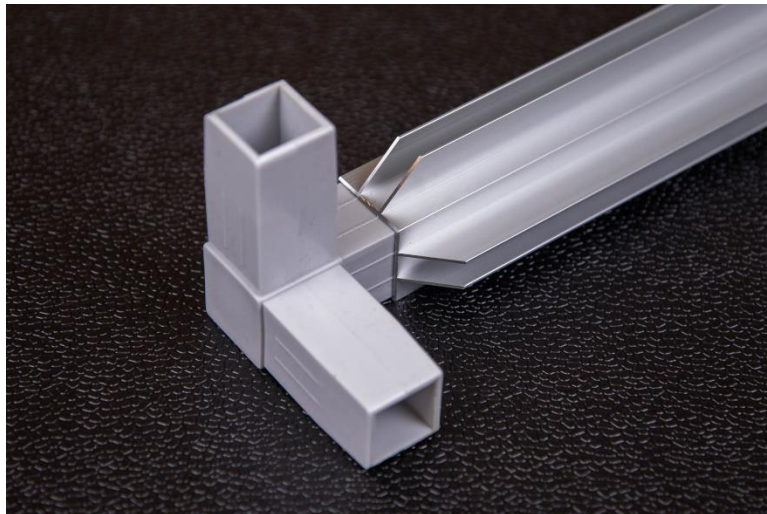
Part M (2) – Doorknobs and Screws

Assembly

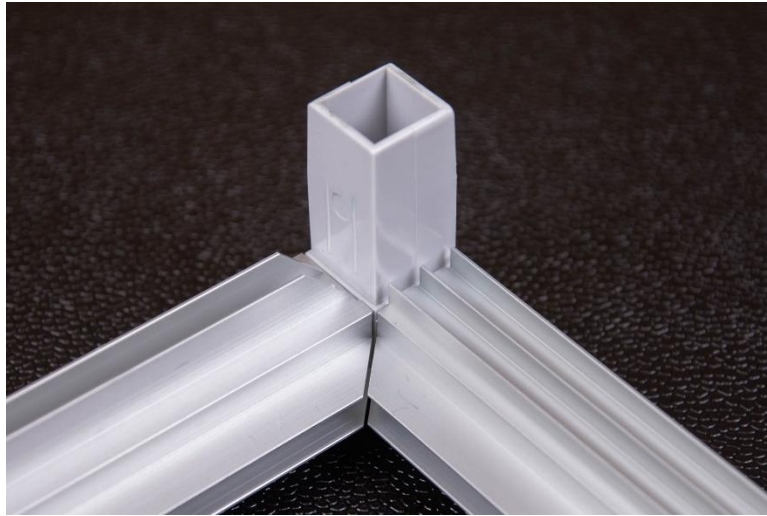
Video instructions also available at <https://www.zenhabitats.com/pages/deluxe-stacking-spacer-assembly>

Step 1 – Assemble Bottom

- Attach the pressure corners (Part F) to each end of two 22" aluminum frames (Part B - A). Make sure that the fingers from the corners align with the channels of the frame.



- Attach a 46" aluminum frame (Part A) and 46" bottom door frame (Part E) to one of the side frames with the corners attached. Make sure that the double door track is facing up and the inside channels all align. The frame and channels should now be in the shape of a U.



- Attach the other side frame, with the two pressure corners already connected, to the assembled frame. You should now have a rectangle shaped floor with four fingers facing up.



Step 2 – Assemble Back and Sides

- Attach the side door frame (Part C) to the pressure corners that align with the bottom door track. **SPECIAL NOTE:** Make sure the front side door frame's channel is facing the back of the enclosure.
- Attach two 10" aluminum frames (Part B - B) to the other two pressure corners. Make sure that the channels are aligned with the channels of the bottom frame.



- Insert the two side panels (Part K) on the left and right-side channels.



Step 3 – Assemble Top

- Attach the pressure corners (Part F) to each end of two 22" aluminum frames (Part B-A). Make sure that the fingers from the corners align with the channels of the frame. (see the first photo)
- Attach a 46" aluminum frame (Part A) and 46" top door frame (Part D) to one of the side frames with the corners attached. Make sure that the double door track is facing up and the inside channels all align (the logo should be upside down at this point). The frame and channels should now be in the shape of a U.



- Attach the other side frame, with the two pressure corners already connected, to the assembled frame. You should now have a rectangle shaped floor with four fingers facing up.
- Flip the top screen frame over and insert the four pressure connectors into the frame of the stand.

Step 4 – Door Assembly

- Attach the doorknobs to the door panels using screws provided (Part M) to the doors (Part L).
- Insert top edge of either the right or left door into the back-top door rail and then align with the back bottom door rail and drop into place.
- Insert top edge of either the right or left door into the front top door rail and then align with the front bottom door rail and drop into place.

Step 5 – Support Bars (Optional)

- If you plan on using substrate over 100 lbs., but less than 250 lbs, use the support bars provided. Simply place on top of the deluxe stacking spacer.

