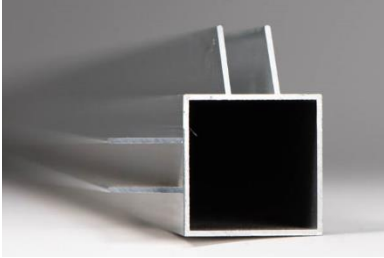


Zen Habitats 4'x2'x2' Assembly Instructions

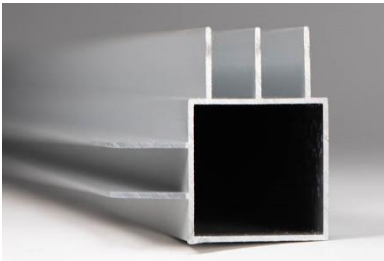
Parts list:

Part A (2) – 46" Aluminum Frame (2 channels at 90-degree angle)

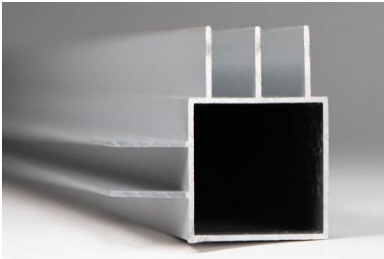
Part B (6) – 22" Aluminum Frame (2 channels at 90-degree angle)



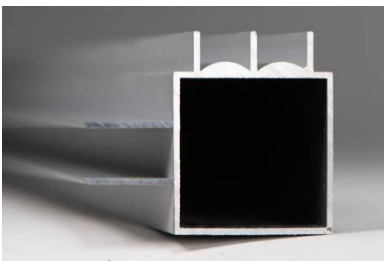
Part C (2) – 22" Aluminum Side Door Frame (1 channel and 1 double 3/4" door rail)



Part D (1) – 46" Aluminum Top Door Frame (1 channel and 1 double 3/4" top door rail)



Part E (1) – 46" Aluminum Bottom Door Frame (1 channel and 1 double 1/4" bottom door rail)



Part F (8) – Plastic Corner Connectors (with 3 prongs)



Parts List Continued:

Part G-A (1) – Wire Grommet

Part G-B (1) – Solid Plug

Part H (1) – 4'x2' Galvanized Steel Screen Top with Support Bars

Part I (1) – 4'x2' Bamboo Lined Back Panel (with hole)

Part J (1) – 4'x2' Bamboo Lined Bottom Panel

Part K (2) – 2'x2' Bamboo Lined Side Panels

Part L (2) – Acrylic Doors (covered in brown paper)

Part M (2) – Doorknobs and Screws

Part N (1) – Substrate Shield

Part O (1) – Substrate Shield Tape

Part P (1) – Humidity Shield (*PVC Enclosures only*)

Part Q (2) – Aluminum Door Wraps (*optional*)



Part R (1) - Glue

Part S (1) – Wire Door Lock (*optional*)

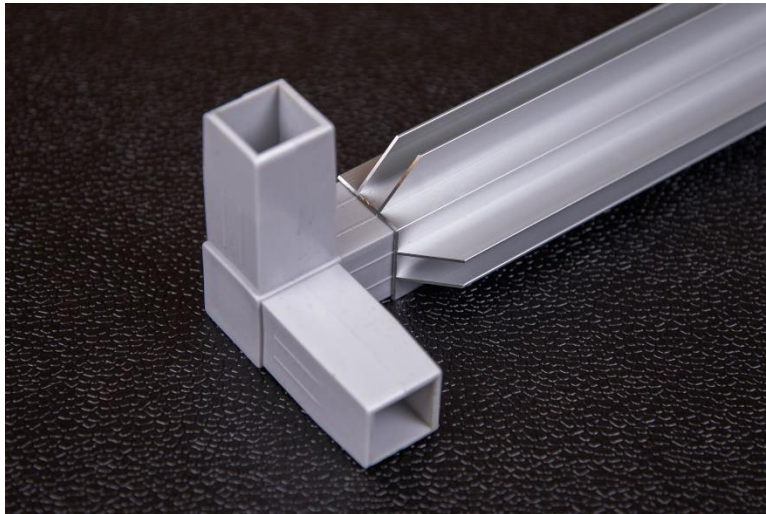


Assembly

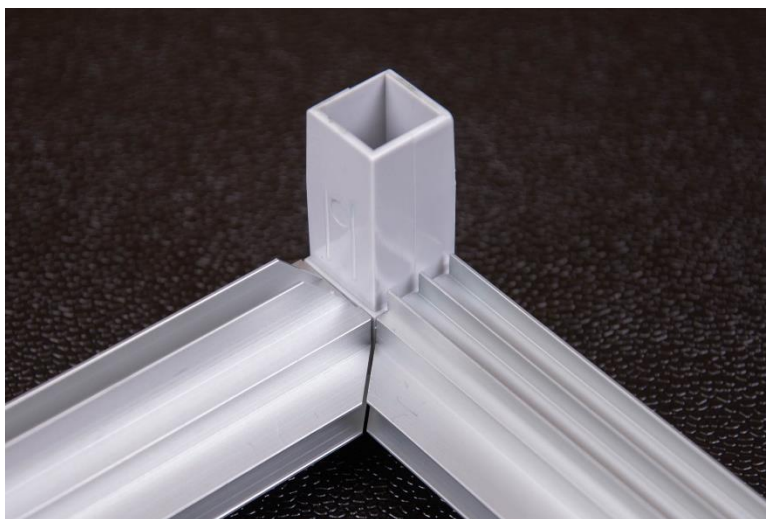
Video instructions also available at <https://www.zenhabitats.com/pages/4x2x2-enclosure-assembly>

Step 1 – Assemble Bottom

- Attach the pressure corners to each end of two 22" aluminum frames (Part B). Make sure that the fingers from the corners align with the channels of the frame.



- Attach a 46" aluminum frame (Part A) and 46" bottom door frame (Part E) to one of the side frames with the corners attached. Make sure that the double door track is facing up and the inside channels all align. The frame and channels should now be in the shape of a U.

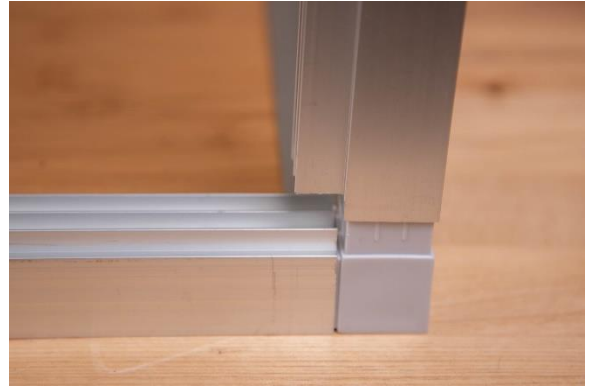
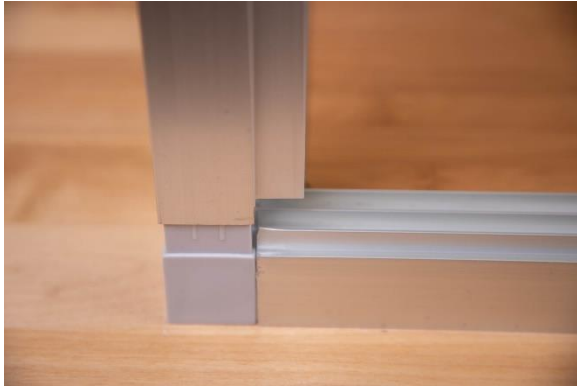


- Slide the bottom panel (Part J) into the channels of the assembled frame.
- Attach the other side frame, with the two pressure corners already connected, to the assembled frame. You should now have a rectangle shaped floor with four fingers facing up.



Step 2 – Assemble Back and Sides

- Attach the side door frame (Part C) to the pressure corners that align with the bottom door track. **SPECIAL NOTE:** Make sure the flat end of the double channel is facing down and aligned with the bottom door track.



- Attach two 22" aluminum frames (Part B) to the other two pressure corners. Make sure that the channels are aligned with the channels of the bottom frame.

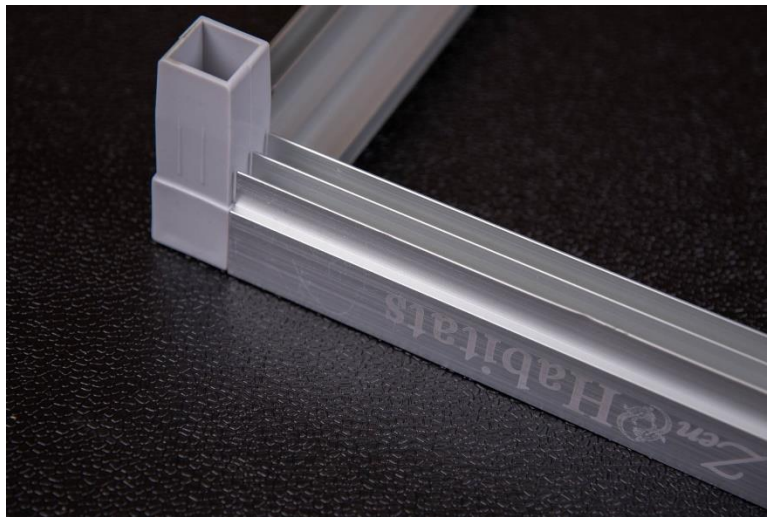


- Insert the two side panels (Part K) on the left and right-side channels. Insert the back panel (Part I), with the grommet hole, in the back channel.



Step 3 – Assemble Top

- Attach the pressure corners to each end of two 22" aluminum frames (Part B). Make sure that the fingers from the corners align with the channels of the frame. (see the first photo)
- Attach a 46" aluminum frame (Part A) and 46" top door frame (Part D) to one of the side frames with the corners attached. Make sure that the double door track is facing up and the inside channels all align (the logo should be upside down at this point). The frame and channels should now be in the shape of a U.



- Slide the screen (Part H) into the channels of the assembled frame. Make sure that the support bars are facing the same direction as the channels and fingers from the pressure corners.



- Attach the other side frame, with the two pressure corners already connected, to the assembled frame. You should now have a rectangle shaped floor with four fingers facing up.
- Flip the screen over and insert the four pressure connectors into the frame of the enclosure.

Step 4 – Door Assembly

- Peel off brown paper lining of acrylic doors.
- Attach the doorknobs to the acrylic door panels using screws provided.
- Insert top edge of either the right or left door into the back-top door rail and then align with the back bottom door rail and drop into place.
- Insert top edge of either the right or left door into the front top door rail and then align with the front bottom door rail and drop into place.

Step 5 – Wire Grommet

- Insert plastic wire grommet (Part G-1) or solid plug (Part G-2) into the whole in the top of the back panel. The smooth side of the grommet should face the inside of the habitat.

Step 6 – Substrate Shield (optional)

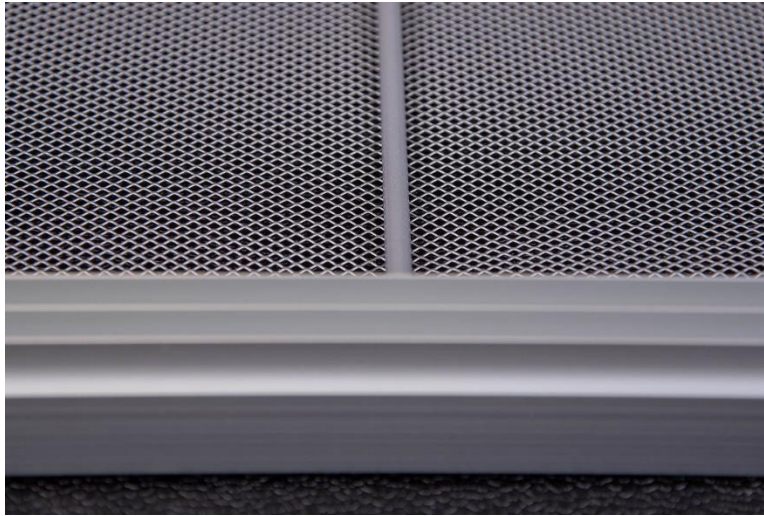
- Peel off brown paper lining of acrylic substate shield.
- Use the double-sided tape provided to and attach to the left, right, and bottom (the bottom is notched on both the left and right side) of the substate shield.
- Align to the inside of the left, right, and bottom door frames and press forward so the tape attaches the acrylic to the frame.

Step 7 – Humidity Shield (optional for PVC enclosures only)

- Peel off brown paper lining of acrylic humidity shield.
- Place on top of the screen. Be sure NOT to place heating elements on top of the humidity shield.

Step 8 – Light, Decorate, and Enjoy!

- Slide the screen (Part H) into the channels of the assembled frame. Make sure that the support bars are facing the same direction as the channels and fingers from the pressure corners. When fully assembled, the support bars will be on the inside of the enclosure.



- Attach the other side frame, with the two pressure corners already connected, to the assembled frame. You should now have a rectangle shaped floor with four fingers facing up.



- Flip the top screen frame over and insert the four pressure connectors into the frame of the enclosure.



Step 4 – Door Assembly

- Peel off brown paper lining of acrylic doors (Part L).
- Attach the doorknobs to the acrylic door panels using screws provided (Part M).

- Insert top edge of either the right or left door into the back-top door rail and then align with the back bottom door rail and drop into place.
- Insert top edge of either the right or left door into the front top door rail and then align with the front bottom door rail and drop into place.

Step 5 – Wire Grommet

- Insert plastic wire grommet (Part G-1) or solid plug (Part G-2) into the whole in the top of the back panel. The smooth side of the grommet should face the inside of the habitat.

Step 6 – Substrate Shield (optional)

- Peel off brown paper lining of acrylic substrate shield (Part N).
- Use the double-sided tape (Part O) provided to and attach to the left, right, and bottom (the bottom is notched on both the left and right side) of the substrate shield.
- Align to the inside of the left, right, and bottom door frames and press forward so the tape attaches the acrylic to the frame.

Step 7 – Humidity Shield (optional for PVC enclosures only)

- Peel off brown paper lining of acrylic humidity shield (Part P).
- Place on top of the screen. Be sure NOT to place heating elements on top of the humidity shield.

Step 8 – Aluminum Door Wrap (optional)

- Install first door in the back door track of your enclosure. The aluminum door wrap will be installed on the edge of the door that faces the middle of the enclosure (opposite of the door handle).
- Evenly apply the glue (Part R) into the channel of the aluminum door wrap (Part Q).
- Align the bottom of the door wrap (channel side facing the edge of the door) towards the bottom of the door first. Press the door wrap to the edge of the door evenly from bottom to top which allows the glue to adhere to the doors.
- Now install the front door and repeat the above process.
- Allow the glue to dry before use.

Step 9 – Wire Door Lock (optional)

- With the doors fully closed, slide the hook side of the wire door lock (Part S) between the doors.
- Twist so the hook is facing the back door and pull back to make sure the hook is wrapped around the back door. This will keep your doors from being inadvertently opened.

Step 10 – Light, Decorate, and Enjoy!



