

ZERO-G
SAMPLE LIBRARIES

ETHERA
GOLD

Sahara Voices

A KONTAKT POWERED VIRTUAL INSTRUMENT

CREDITS

PRODUCED & DESIGNED BY

STEFANO MACCARELLI

Vocals

Clara Sorace

Script

Stefano Maccarelli

Sampling, Editing, GUI & GFX

Stefano Maccarelli

About the Producer

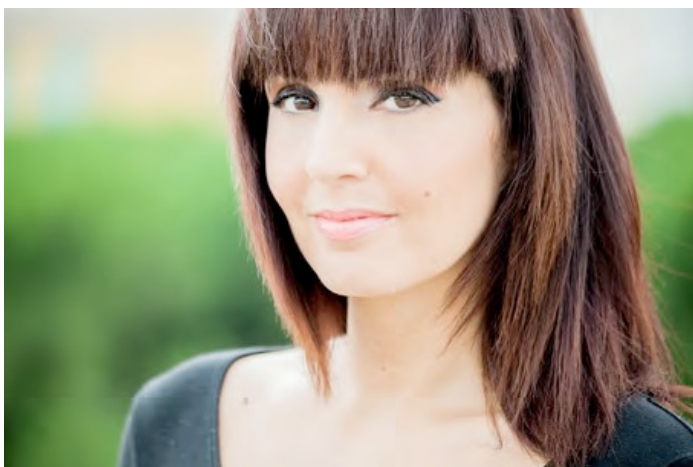
Stefano Maccarelli



Ethera Gold – Sahara Voices was created by Stefano Maccarelli, an Award-Winning Sound Designer & Composer with over 23 years of experience in the audio industry, film music, sound design & audio postproduction. Stefano has scored or licensed music & sound design for ad campaigns and TV Shows of many leading broadcasting brands such as Fox, National Geographic, Sky, A&T Networks, Fox Sports etc.

About the Vocalist

Clara Sorace



Clara is a vocalist & recording artist from Italy who is based in Rome. She studied piano and singing for over 12 Years. She has participated in various competitions and festivals including the San Remo Academy of Song where she reached the final. Clara has extensive experience of musical production and vocal arrangements, which has enabled her to widen her stylistic versatility and range so that she can switch easily from Soul & Pop to Cinematic and Epic Music.

Her vocals have been used in many international musical works, international trailers, TV Shows, Video Games like Assassin's Creed Valhalla by Ubisoft, and many Cinematic Music Albums.

What's Included in Ethera Gold Sahara Voices:

- 5 multi-sampled Kontakt Instruments
- Approximately 6GB of 24 bit, 48KHz samples.
- The Brand New Ethnic - Mid-East Vocal True Legato - 3 Gb of multi-sampled and chromatic vocal true legato - up to 2 different legato transitions controlled by Midi-Velocity, and 2 articulations AH and UH.
- Sustains Instrument with 11 inspiring articulations controlled by Key Switches.
- Custom Convolution Reverb
- Over 800 inspiring Ethnic - Middle Eastern Vocal phrases organised by Key - BPM delivered also in open .wav format so you can easily drag & drop them into your DAW.
- Reversed Vocal Phrases instrument

System Requirements

Minimum System Requirements

- Intel dual core i5 (or equivalent) processor, running at 2.7 GHz (or above)
- 8 GB of RAM or more
- Mac OSX 10.12 or above - Windows 7,8,10 with ASIO sound drivers
- 7200 RPM or faster hard drive for sample streaming
- The Full Version of Native Instruments KONTAKT 6.5.2 or above

System Requirements for the Best Performance

- Intel i7 (or i9), or AMD running at a minimum of 3.5 GHz – 6 / 8 cores
- 16 GB of RAM or more
- MAC OSX 10.12 or above - Windows 10 with ASIO sound drivers.
- SSD (Solid State Drive) for sample streaming
- The Full Version of Native Instruments KONTAKT 6.5.2 or above

Nb: Ethera Gold Sahara Voices requires the FULL version of Kontakt 6.5.2 or higher – it will not work with the FREE Kontakt Player. The Kontakt Player will load and play Ethera Gold Sahara Voices for 15 minutes - in Demo Mode.

How to Install Ethera Gold - Sahara Voices

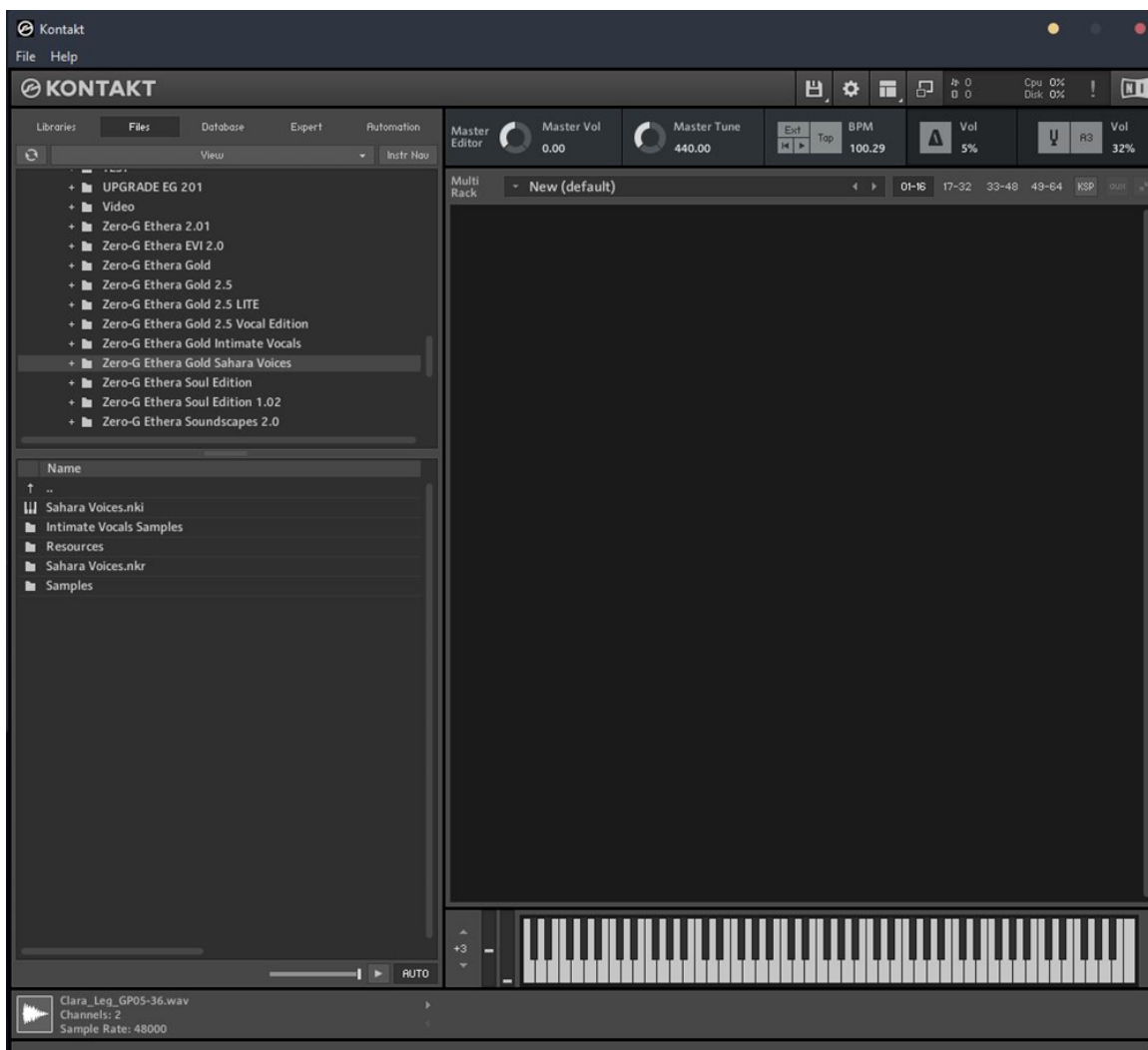
INSTALLING THE KONTAKT FILES

This title contains Kontakt Formatted files which can be accessed from the Files tab within the full version of Kontakt 6.5.2. As stated on the product page, Kontakt files will only run-in demo mode in the free Kontakt Player.

From within Kontakt, can you please ensure you are on the Files tab, and not the Libraries tab and use the browser to locate your chosen install path.

Now with the product folder in the bottom of the two left windows, navigate through the folder to find the Kontakt instrument files (.nki) which you can double-click to load into Kontakt. Going back and forth between the library and files tab can slow down your workflow, therefore Native Instruments included a handy Quick-Load feature within Kontakt. By setting up the Quick-Load feature you can customize the layout and access all your Kontakt formatted files and libraries in one location.

Files tab



Welcome to ETHERA GOLD – SAHARA VOICES



Zero-G/Xfonic proudly present the latest addition to the Ethera Collection.

The Ethera Collection consists of: Ethera 2.0, Ethera Soul Edition, Ethera Soundscapes 2.01, Ethera EVI 2.0, Ethera Gold 2.5, Ethera Gold Intimate Vocals.

If you already own some, or all, of the earlier Ethera titles then Ethera Gold Sahara Voices will be a powerful add-on to your Ethera Collection. If you are new to Ethera, you will find Sahara Voices to be an awesome new instrument to assist and enhance your music-making creativity and it also will give you access to a possible Cross-Grade Coupon to buy the other Ethera Libraries.

Ethera Gold Sahara Voices is an all-new, powerful set of Vocal instruments. The perfect new tool for adding amazing Ethnic Vocals to your soundtracks.

All the samples included in this library are completely new and unique to this instrument.

The vocal instruments included with Sahara Voices use the magnificent vocals of Clara Sorace. Clara has sung with many of the greatest soundtrack and video games composers and trailer music creators. Her voice is a thrilling blend of soul, ethnic, epic and emotionality with the charm of Latin flair.

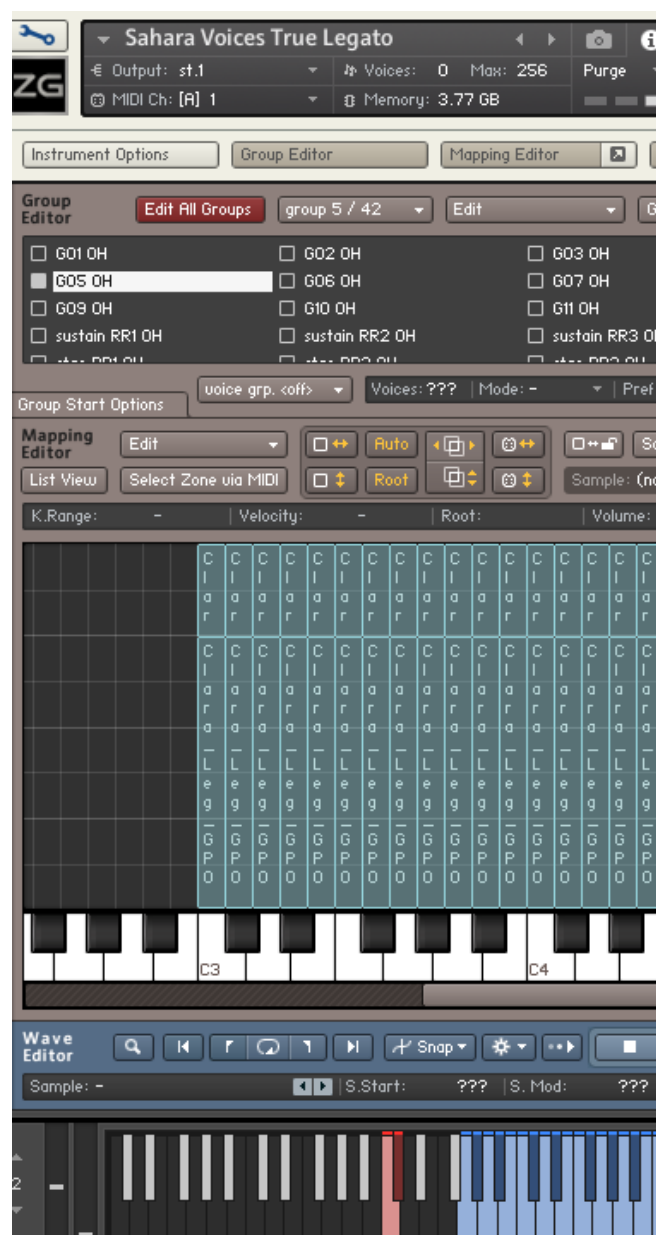
Ethera Gold - Sahara Voices - True Legato

The image shows a software interface for a vocal sample library. At the top, the title "02 - Legato" is displayed. Below it is a control bar with various icons for playback and settings. The main interface features a large, artistic image of a woman wearing a red headscarf and a yellow veil, with her hands near her face. The text "ETHERA GOLD" and "SAHARA VOICES" is overlaid on the image, along with "FEATURING SARARA SORACE". The interface includes a "Sahara Voices True Legato" section with parameters like "Output: sf.1", "Voices: 0 Max: 256", "MIDI Ch: [A] 1", and "Memory: 3.77 GB". There are also "Tune" and "Purge" controls. At the bottom, there are four knobs for "ATTACK", "VOLUME", "RELEASE", and "OFFSET", and a "STEREO" indicator. The bottom of the interface shows a piano roll with a keyboard layout.

With the Ethersa Series we developed an amazing series of True Legatos.

Developing a True Legato as we have for the Ethersa Series requires a lot of work and uses many, many samples. We have sampled each interval in up to 3 different styles so that the user can choose, using MIDI-velocity (0 to 95, and 96 to 127), which legato interval is preferable for a situation.

For example, with different legato transition samples or with more ornament.



NB: The Sahara Voices True Legato has approximately 250ms of latency

Important advice for optimal results:

To improve the legato smoothness there is approximately 250ms of latency.

So, when you edit your midi part, to make sure that you have the midi event on the grid, please use the Off-Set Delay parameter of your DAW, set it to about: -250ms

Remember: You are playing a Human Voice. Not a Violin, or a Synth Lead.

Also remember to leave pauses between phrases as this is important to create the impression of the singer breathing.

The True Legato has only a few controls:

Attack: sets the attack time of the sustains.

Offset: sets the latency of the legato. Usually the default setting works fine, although in some case it can be useful change this value to have a faster legato, to avoid the latency during the live playback.

Volume: controls the intensity.

Legato Switch: lets you turn off the legato so that you can play a chord with the sustain samples.

Release: for some intervals this sets a 'breath' effect on the release notes.

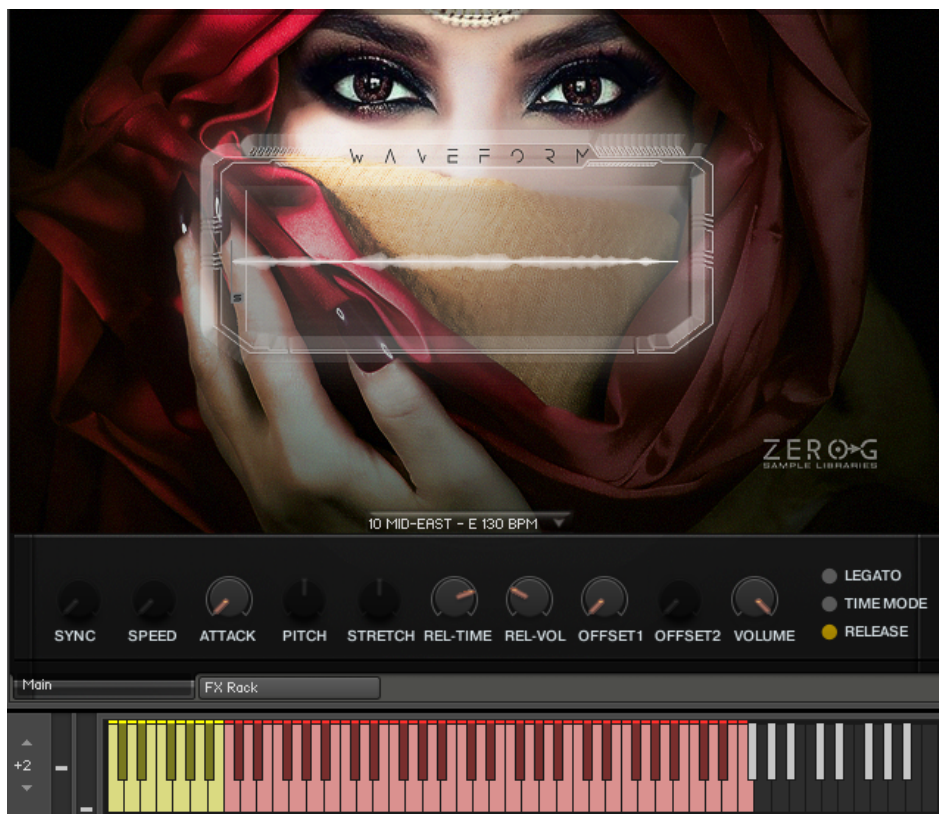
Ethera Gold - Sahara Voices - Vocal Phrases

The screenshot displays the Zero-G software interface for the 'Ethera Gold - Sahara Voices - Vocal Phrases' library. The interface is dark-themed and includes the following elements:

- Top Bar:** Shows '05 - Phrases' and various control icons (power, record, write, solo, mute, volume, pan).
- Control Panel:** Features a 'Sahara Voices Vocal Phrases' dropdown, 'Output: st.1', 'MIDI Ch: [A] 1', 'Voices: 0 Max: 256', 'Memory: 101.37 MB', 'Purge', 'Tune' knob (0.00), and 'S'/'M' buttons.
- Visualizer:** A large central area with a background image of a woman in a red headscarf. Text reads 'ETHERA GOLD SAHARA VOICES FEATURING ETHERA SORACE'. A 'WAVEFORM' display is overlaid on the image.
- Tempo/Key:** A dropdown menu at the bottom center shows '10 MID-EAST - E 130 BPM'.
- Parameter Controls:** A row of knobs for 'SYNC', 'SPEED', 'ATTACK', 'PITCH', 'STRETCH', 'REL-TIME', 'REL-VOL', 'OFFSET1', 'OFFSET2', and 'VOLUME'. To the right are buttons for 'LEGATO', 'TIME MODE', and 'RELEASE'.
- FX Rack:** A section at the bottom with 'Main' and 'FX Rack' tabs.
- Keyboard:** A piano roll keyboard at the very bottom with a '+2' offset indicator.

Sampling the Human Voice is a great challenge. With our Emotive True Legato and Epic True Legato, we believe that we offer you the best and most realistic vocal Instrument on the market. However, the Human Voice is complex and so for this reason, the Vocal Phrases Instrument is particularly important. The Vocal Phrases Instrument supplies you with hundreds of fantastic ready-to-use vocal performances. Imagine, you are composing the music for a Blockbuster Trailer, or a Video Game and you instantly need a voice with a great character that will fit perfectly with your music. Well, this instrument is for you! Or if you need some inspiration for your composition then this instrument can be the starting point to build your music around.

It contains over 1600 ready-to-use Vocal Phrases, from Dramatic to Epic, from Ethereal to Modern, all organised by BPM and KEY. There are a lot of different KEYS (C, D, E, G, A) using the Time Mode with Pitch Shifting you can cover all the Key possibilities. With a Pitch shifting of +/- 1 semitones the sound quality is still very good. A vocal phrase in E can be converted to F with +1 semitone, or a vocal phrase in C can be taken down to B with a -1 semitone of pitch shifting.



Each vocal phrase comes in many different tempos: 95bpm, 115bpm and 130bpm, etc. If you need to change the native tempo of a selected vocal phrase you can use the Time Mode. We suggest using only a small tempo change to maintain the quality of the original sample. For example, from 115bpm to 120 bpm or from 130bpm to 125bpm etc. Using Time Mode, the vocal phrase will be synced to the tempo of the DAW Host.

Ethera Gold - Sahara Voices – Sustains

This instrument contains a variety of vocal phonemes, including Melisma & Sustains.



The controls of the Home Page are similar to some of the other instruments' controls.

With the Key Switches coloured RED, you can choose the various articulations.

With the Modulation Wheel (CC 91) you can control the intensity of the sound and create a blending with other vocal samples.

Attack, Decay, Sustain, Release: these knobs are a classic ADSR envelope. This allows you to change the transient & duration of the sample.

Freq: this is an LFO which controls the PITCH of the sound. This allows you to change the frequency in "Hz" of the LFO.

Amount: works in conjunction with the Freq knob. It allows you to change the range of the Pitch Modulation in cents.

Offset: allows you to change the starting point of the sample. Try this knob with the arpeggiator set to on.

Shape: allows you to add a "Tube" saturation to the sound. Use it to add more "character", more harmonics and power. Useful for Bass, Synth, Textures etc.
