

The Sweetbriar Cottage



Tools Needed:

- Cordless drill (12V or higher)
- #2 square drive bit
- Hammer
- 6' step ladder
- Tape measure
- Square utility knife w/ blade & hook blade



Little Cottage Co.

PO Box 455

Berlin OH 44610

330-893-4212

© 2007 *Little Cottage Co.*

This page intentionally left blank.

The Sweetbriar Cottage

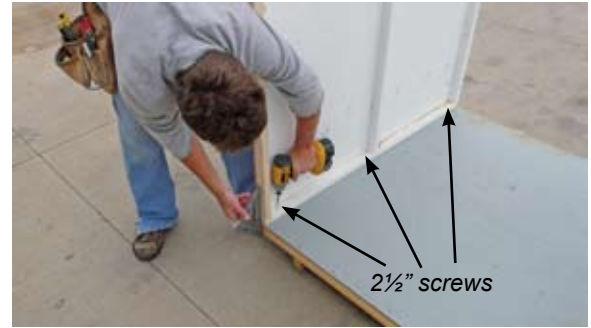


1



Thank you for purchasing from Little Cottage Co! You will find all components necessary to complete your Sweetbriar Cottage in your kit. Please refer to your buy list for specific contents, which will vary by unit.

2



Locate the first side panel, set flush with the edge of floor, and secure by driving a 2½" screw through lower plate and into floor. Additionally, drive screws at the opposite corner and at the center 2X.

3



Set the opposite panel in place and secure in a similar manner.

4



Locate rear panel, set in place, and apply pressure to ensure proper fit between side panels. Secure along the bottom (inside) 2X per step #2.

5



Verify that top corners are flush and drive 2½" screws at top (as above), in the middle, and at the bottom of corners.

6



Screw locations on rear panel.

7



Locate front panel, noting that door and window are preset. Set panel in place and secure to floor using 2½" screws at each corner and beside each 2X.

8



Drive 2½" screws at both sides of bottom corner near door.

The Sweetbriar Cottage



9



Repeat at the top corner above door (and then in the middle of corner, beside door). Secure the opposite front corner using three (3) 2½" screws as shown in step #6.

11



Repeat for the front gable.

13



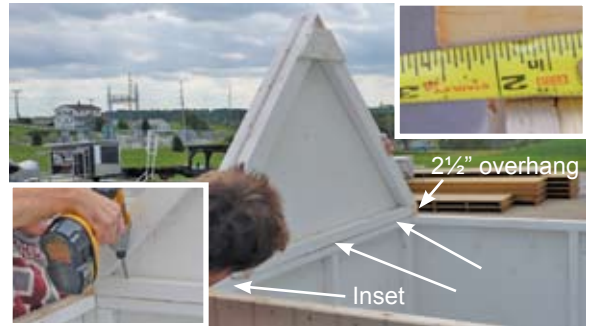
Repeat at center and the opposite end of plate. Then repeat for the opposite side plate.

15



Set rafter in place and secure using a 2½" screw. Repeat on opposite side.

10



Carefully raise rear gable, setting as to allow a 2½" overhang on both sides. Secure by driving three (3) 2½" screws through the bottom gable 2X and into the rear wall's top plate.

12



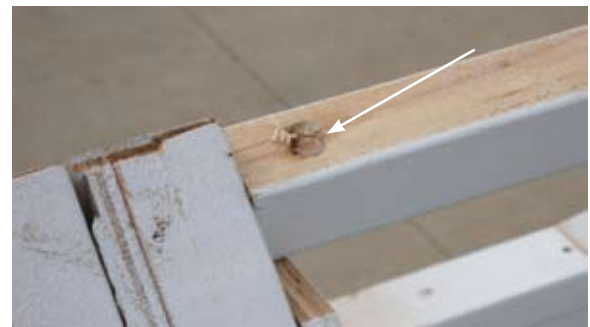
With front and rear gables now in place, locate and set rafter plates. Using an angle to ensure that the edge of plate is flush with the end of gable, secure using a 2½" screw.

14



Locate center rafter and align as marked on the rafter plate.

16



Set center ridge beam in place and secure by toenailing a 2½" screw through the ridge beam and into the gable.

The Sweetbriar Cottage



17



Repeat on the opposite end.

18



Align center rafter with mark on underside of ridge beam (see inset) and secure using a 2½" screw.

19



Locate and set corner trim on all corners as shown using three (3) 1¼ black headed screws per side.

20



Secure siding along bottom of structure by driving 1¼ black headed screws every 8" (all sides).

21



Secure trim to front of structure using three (3) 1¼ black headed screws as shown above.

22



To complete your cottage, carefully lift roof covering into place.

23



Align roof covering on all sides, ensuring that the front and back (as well as both sides) equally overhang the roof framing.

24



Secure roof covering by driving 1¼ black headed screws through each eyelet and into roof framing.