

LONGHOUSE

16Ft x 10Ft

MODEL LH1610



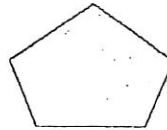
ACCESSORIES, HARDWARE, AND FASTENERS



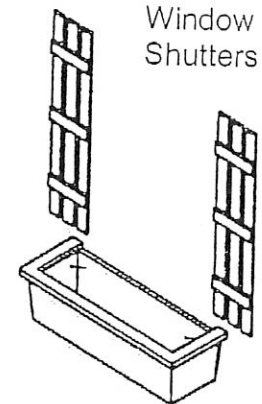
Door
Handle



"Cedarshed"
plaque

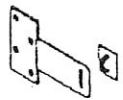


Blank
plaque



Window
Shutters

Planter
box



Hasp



Hinges



Barrel
bolt

Fasteners



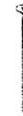
1 1/8" nails



1 3/4" nails



2" nails



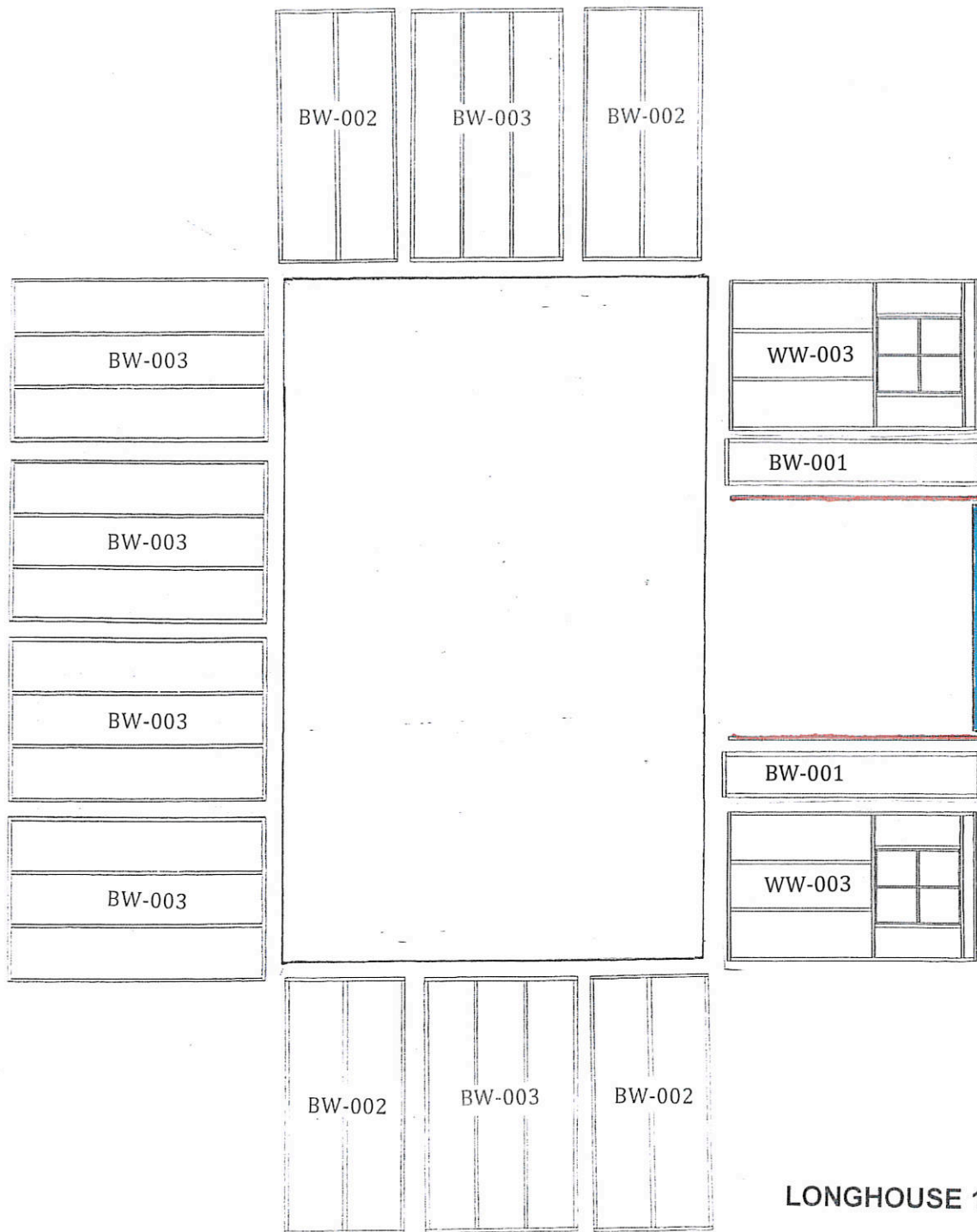
2" screws



3" screws

LH1610

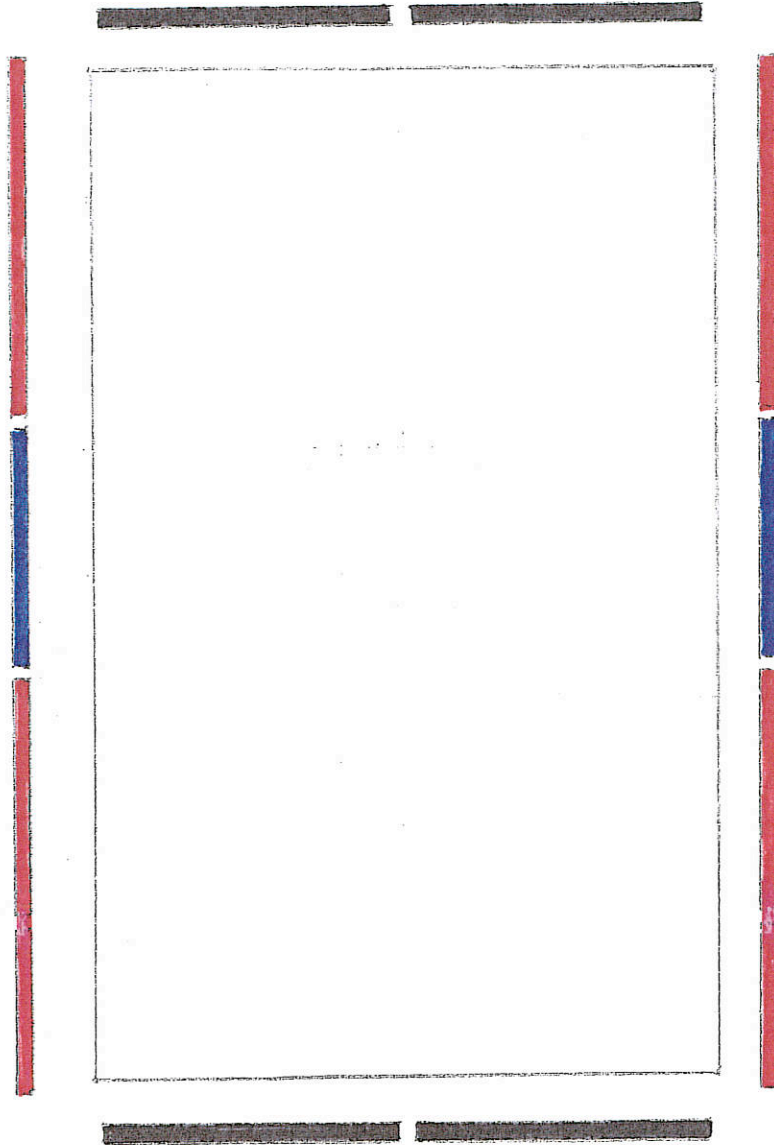
| PART # | DESCRIPTION | DIMENSIONS (where app.) | # OF PCS |
|--|-----------------------------|-------------------------|----------|
| ACCESSORIES | | | |
| P-H-PLAQSL | square CS plaque | square CS plaque | 1 |
| P-H-PLAQNL | peak plaque | peak plaque | 2 |
| P-FW-001 | window box | window box | 2 |
| P-SH-001 | shutters | shutters | 4 |
| FASTENERS | | | |
| P-H-NL1.125 | nails | 1 1/8" nails | 40 |
| P-H-NL1.75 | nails | 1 3/4" nails | 400 |
| P-H-NL2 | nails | 2" nails | 75 |
| P-H-SC2 | 2" screws | 2" Screws | 250 |
| P-H-SC3 | 3" screw | 3 " Screws | 500 |
| DOOR AND HARDWARE | | | |
| C-DR-001 | double doors (incl. Hinges) | double doors | 2 |
| P-1371C | door stop | 1 x 3 x 71 1/4 | 1 |
| P-1262G | door stop | 1 x 2 x 62 1/2 | 1 |
| P1271I | door stop | 1 x 2 x 71 5/8 | 2 |
| P-H-BBLT4 | barrel bolt | 4 " barrel bolt | 2 |
| P-H-DHAND | door handle | door handle | 2 |
| P-H-HASP | hasp | hasp | 1 |
| Instruction manual, questionnaire and driver bit | | | |



LONGHOUSE 10 x 16

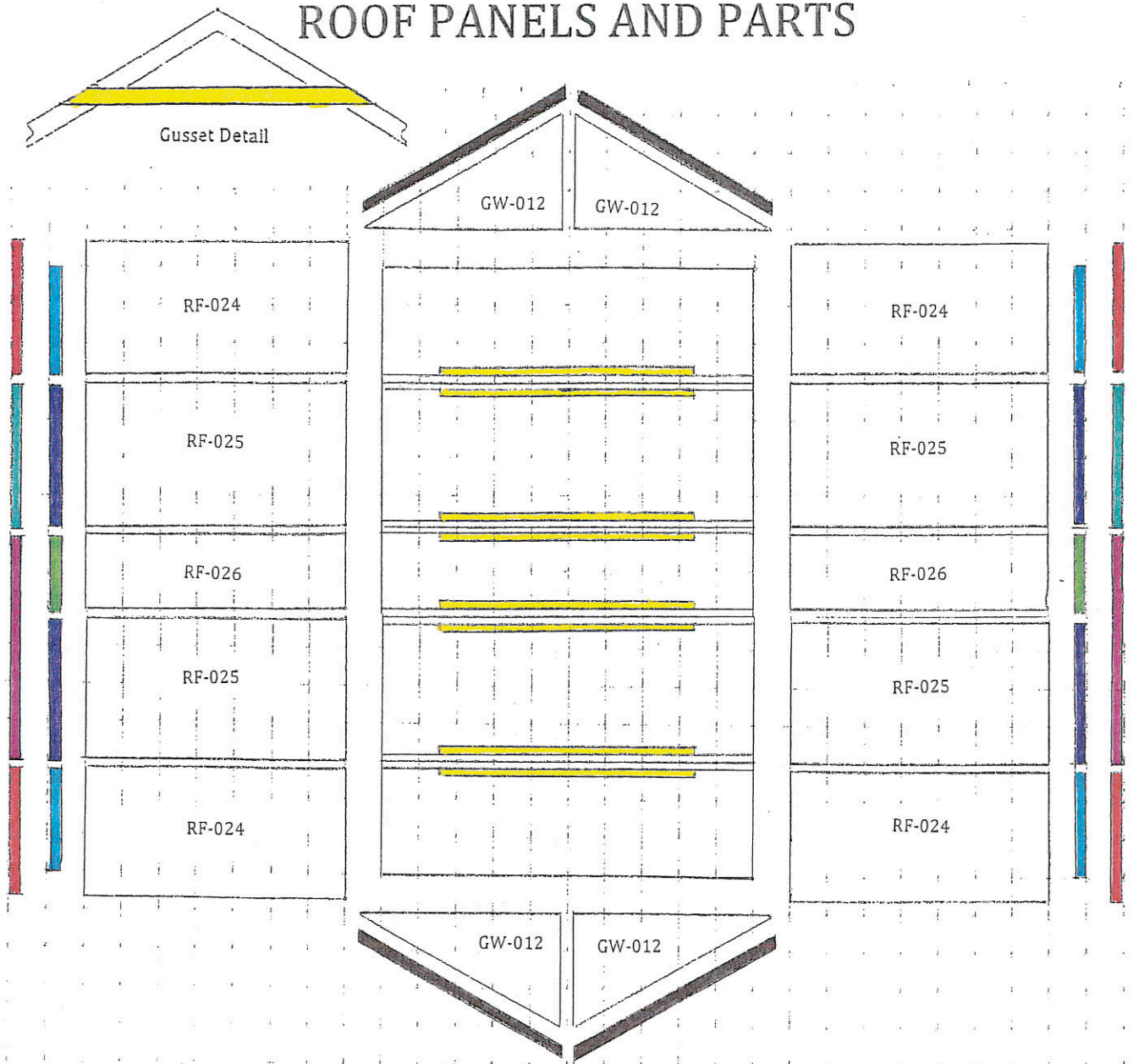
| PART # | DESCRIPTION | DIMENSIONS (where app.) | # OF PCS | CODE |
|-------------------|-------------------------|-------------------------|----------|-----------|
| WALL PARTS | | | | |
| P-2313K | header | 2 x 3 x 13 3/4 | 2 | not shown |
| P-2334G | header | 2 x 3 x 34 1/2 | 4 | not shown |
| P-2346G | header | 2 x 3 x 46 1/2 | 6 | not shown |
| C-BW-001 | wall panel | 13 3/4" wall panel | 2 | BW-001 |
| C-BW-002 | wall panel | 34 1/2" wall panel | 4 | BW-002 |
| C-BW-003 | wall panel | 46 1/2" wall panel | 6 | BW-003 |
| C-DF-008 | door frame (vertical) | door frame | 2 | |
| C-DF-012 | door frame (horizontal) | door frame | 1 | |
| C-WWW-003 | window wall | 46 1/2" window wall | 2 | WW-003 |

TOP PLATE PLACEMENT

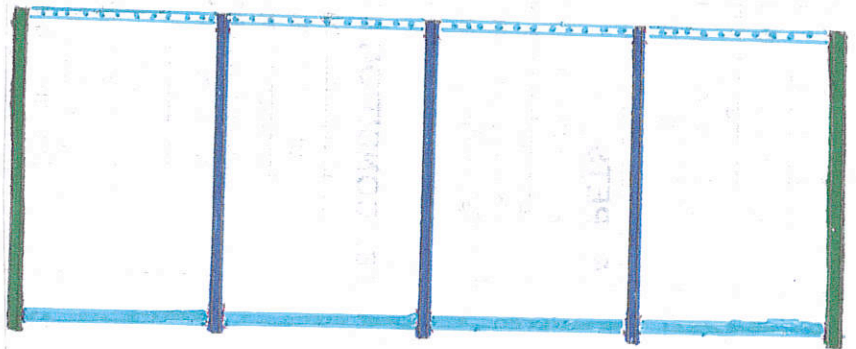
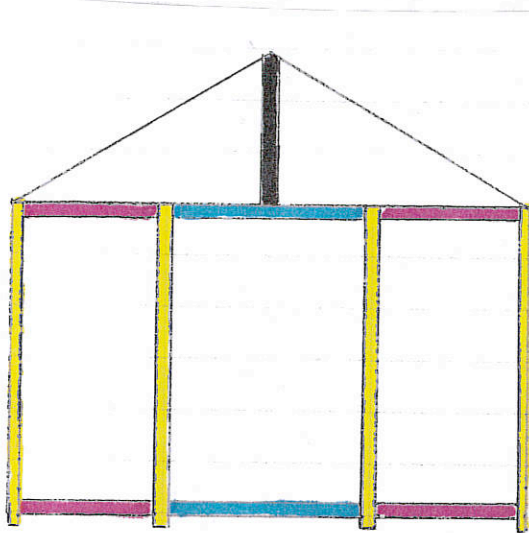
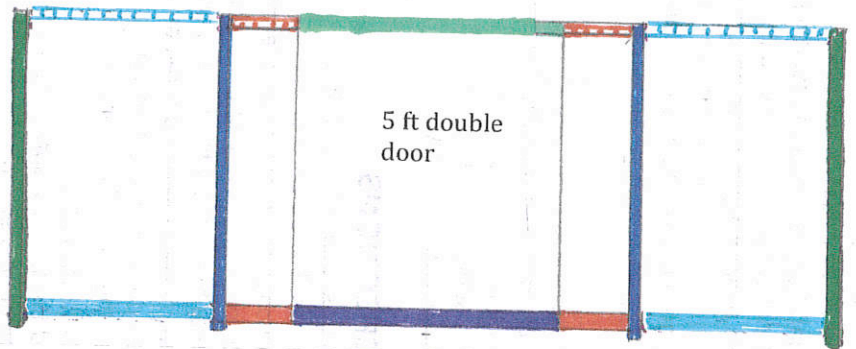
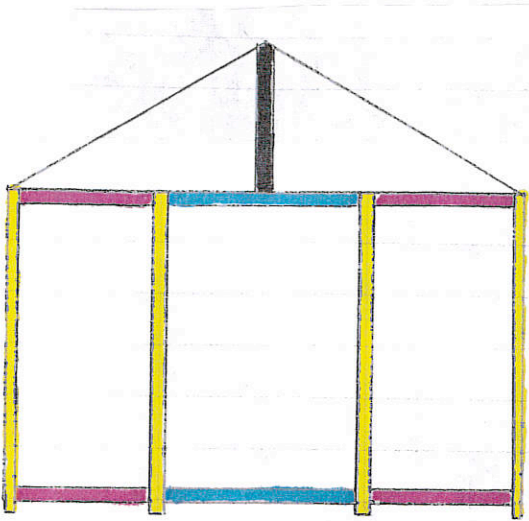


| PART # | DESCRIPTION | DIMENSIONS (where app.) | # OF PCS | CODE |
|-------------------|-------------|-------------------------|----------|------|
| TOP PLATES | | | | |
| P-2355C | top plates | 2 x 3 x 55 1/4 | 4 | |
| P-2372C | top plates | 2 x 3 x 72 1/4 | 4 | |
| P-2346G | top plates | 2 x 3 x 46 1/2 | 2 | |

ROOF PANELS AND PARTS



| PART # | DESCRIPTION | DIMENSIONS (where app.) | # OF PCS | CODE |
|-----------------------------------|---------------|-------------------------|--------------|-----------|
| ROOF PARTS (WOOD SHINGLES) | | | | |
| P-2371KYb | gusset | 2 x 3 x 71 3/4 | 8 | |
| C-GW-012 | gable wall | 25 3/4 x 67 1/8 | 4 | GW-012 |
| C-RF-024 | roof panel | 42 3/4 x 67 1/8 | 4 | RF-024 |
| C-RF-025 | roof panel | 46 1/2 x 67 1/8 | 4 | RF-025 |
| C-RF-026 | roof panel | 24 x 67 1/8 | 2 | RF-026 |
| P-B-G424 | soffits | 1/2 x 4 x 24 | 2 | |
| P-B-G437 | soffits | 1/2 x 4 x 37 | 4 | |
| P-B-G446G | soffits | 1/2 x 4 x 46 1/2 | 4 | |
| P-1446G | fascia | 1 x 4 x 46 1/2 | 2 | |
| P-1442 | fascia | 1 x 4 x 42 | 4 | |
| P-1470G | fascia | 1 x 4 x 70 1/2 | 2 | |
| P-1471YA | gable fascia | 1 x 4 x 71 | 4 | |
| P-H-RFLT12 | roofing felt | 1 ft x 5 ft | 10 sq ft (2) | not shown |
| P-H-RCAP24 | ridge caps | 24" | 24 | not shown |
| P-H-MFLASS | roof flashing | 3" x 12" | 48 | not shown |



| PART # | DESCRIPTION | DIMENSIONS (where app.) | # OF PCS | CODE |
|-------------------|-------------------------|-------------------------|----------|------|
| TRIM PARTS | | | | |
| P-1226 | gable trim | 1 x 2 x 26 | 2 | |
| P-1279C | trim | 1 x 2 x 79 1/4 | 5 | |
| P-1280G | trim | 1 x 2 x 80 1/2 | 8 | |
| P-13C79C | trim | 1 x 3 1/4 x 79 1/4 | 4 | |
| P-B-G445 | skirting | 1/2 x 4 x 45 | 6 | |
| P-B-G645 | skirting | 1/2 x 6 x 45 | 10 | |
| P-B-G412C | skirting | 1/2 x 4 x 12 1/4 | 2 | |
| P-B-G612C | skirting | 1/2 x 6 x 12 1/4 | 2 | |
| P-B-G633 | skirting | 1/2 x 6 x 33 | 8 | |
| P-1467 | door skirting | 1 x 4F x 67 | 1 | |
| P-1367 | door trim (hor.-narrow) | 1 x 3 x 67 | 1 | |