

Gambrel Barn with Overhang Manual



Tools Needed:

- Cordless Drill (12V or higher)
- #2 Square Drive Bit
- Hammer
- 6' Step Ladder
- Tape Measure
- Square utility knife
w/ blade & hook blade
- Speed Square



Little Cottage Co.®
PO Box 455
Berlin, OH 44610
330-893-4212
www.cottagekits.com

© 2007-2008 Little Cottage Co.

Gambrel Barn with Overhang Manual



1



Thank You for purchasing from Little Cottage Co. you will find all components necessary to complete your barn. Refer to your buy list for specific contents, which will vary by unit.

2



Pictured here is your floor joist and 4x4's for the floor.

3



You will want to begin by laying out your 4x4 runners. Follow the floor layout sheet, for 4x4 spacing.

4



Use your square and fasten all 4 corners as shown with 2 1/2" screws.

5



Next use your tape measure to square up the floor as shown.

6



Continue fastening the rim joist onto the outside runners. Joist are spaced 16" o.c.

Gambrel Barn with Overhang Manual



7



Once the floor is squared up, continue to fasten with 2 1/2" screws to all 4x4s as shown.

8



Continue fastening 2x4's into the 4x4s as shown with 2 1/2" screws.

9



Next install the flooring as shown.

10



See the floor layout sheet for plywood in place and make sure the plywood is flush on both sides. Secure in place by driving 1 1/4" screws or 2" nails every 8".

11



Next lay the gable truss on the floor as shown.

12



Fasten the gable truss to the floor temporarily as shown. This is your pattern to complete the rest of the trusses.

Gambrel Barn with Overhang Manual



13



Install the rake block at each end of the truss as shown temporarily. This is to help build your trusses.

14



Install the block on this end as shown. Same as the last picture.

15



Now install your truss gussets as shown and fasten with 1 1/4" screws or nails.

16



Next pick up the truss as shown.

17



Lay truss to the side.

18



After the truss is laid to the side, install the truss gussets as shown.

Gambrel Barn with Overhang Manual



19



Locate the first wall panel and set in place.

20



make sure the wall is flush with the edge of the floor structure. Apply pressure from the outside and fasten with 2 1/2" screws or 3" nails.

21



Place 2 1/2" screws or 3" nails every 16".

22



Fasten the walls with 2 1/2" screws or 3" nails.

23



Continue installing panels per diagram.

24



Fasten the walls with 2 1/2" screws or 3" nails.

Gambrel Barn with Overhang Manual



25



Continue installing panels per diagram.

26



Fasten with 2 1/2" screws or 3" nails as shown.

27



Continue fastening the walls with 2 1/2" screws or 3" nails as shown.

28



Continue installing panels per diagram.

29



Fasten the outside corner with 1 1/4" screws or 2" nails every 8" on center.

30



On the inside of the doors you will find a 2x4 brace. Remove the brace and set aside, you will use it again to help brace.

Gambrel Barn with Overhang Manual



31



Locate the 3x60 siding underneath the door. Install and keep flush to the top of the floor plywood. Fasten with 1 1/4" screws or 2" nails every 8" on center.

32



Hold the door in place, and tap on the barrel bolt as shown.

33



Using 5/16" drill bit to drill the hole for the barrel bolt.

34



Now install the door latch by sliding into the predrilled hole. Fasten with (2) 1 1/4" screws.

35



Install the D part of the latch on the inside.

36



Now fasten the outside siding corners with 1 1/4" screws or 2" nails every 8" on center.

Gambrel Barn with Overhang Manual



37



Fasten the outside bottom siding every 8" on center with 1 1/4" screws or 2" nails.

38



The walls are set. Locate the 2x6 top plate, according to diagram. fasten the top plate with 2 1/2" screws or 3" nails, every 24" on center.

39



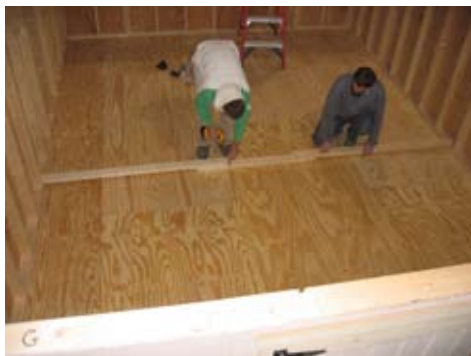
Continue to follow the diagram. Fasten the top plate, and keep flush to the inside wall.

40



Now you will need to construct your temporary brace, you will use this to brace the building before setting the trusses.

41



Push the outside of the 2x4's out against the siding to get the exact width and fasten the brace with 2 1/2" screws.

42



Install the brace with 2 1/2" screws.

Gambrel Barn with Overhang Manual



43



For the larger barns, you will need to install more braces. Use 2x4 rakes and fasten with 2 1/2" screws.

44



Keep the gable plate flush with the outside of the 2x6 top plate on the back wall. Fasten with 2 1/2" screws or 3" nails.

45



Next install the second section of the gable as shown.

46



Secure with 2 1/2" screws or 3" nails.

47



Fasten the gable splice with 1 1/4" screws or 2" nails every 8" on center.

48



Now install the 3rd section as shown, which makes the porch overhang.

Gambrel Barn with Overhang Manual



49



Fasten with 2 1/2" screws or 3" nails.

50



Now secure from the outside with 1 1/4" screws or 2" nails.

51



Locate the trusses and hang over the wall as shown in the above picture.

52



Begin setting the trusses.

53



Measure 48" for 4' overhang and 72" for 6" overhang from the end of the truss to 2x6 top plate.

54



This mark is shown at 48".

Gambrel Barn with Overhang Manual



55



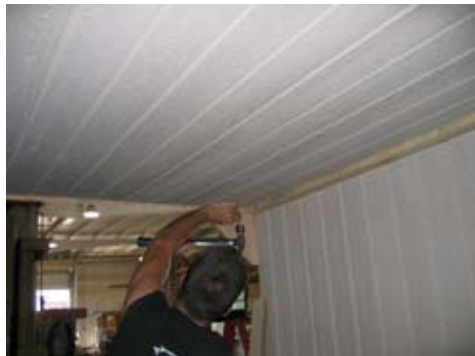
Secure the truss with 2 1/2" screws or 3" nails.

56



Now install the smart side as shown for the ceiling.

57



Fasten with 1 1/4" screws or 2" nails.

58



Continue fastening with 1 1/4" screws or 2" nails.

59



Make sure the trusses are spaced 24" on center before fastening.

60



Continue with your soffit.

Gambrel Barn with Overhang Manual



61



Fasten with 1 1/4" screws or 2" nails.

62



Now install 2x4 fascia as shown.

63



Make sure your overhang is correct. That may vary on different sized buildings.

64



See diagram for sheeting layout.

65



Now it is ready for roof sheeting.

66



Measure 48" from the edge of the 2x4 fascia to where the pencil is shown, mark on each end.

Gambrel Barn with Overhang Manual



67



Next snap a chalk line from one end to the other as shown before installing sheeting.

68



Now see the diagram for sheeting layout and install as shown.

69



Measure the overhang as shown. Measurement may vary on building sizes from 6 to 8 inches.

70



Continue installing the sheathing. The trusses need to be 24" on center.

71



Now locate 2x4 rakes for barn overhang.

72



This shows the layout for the rake.

Gambrel Barn with Overhang Manual



73



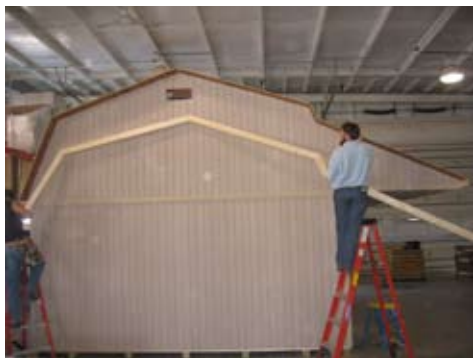
Fasten the rakes with 1 1/4" screws or 2" nails with OSB Gussets.

74



Install the rake block as shown. And secure with 2 1/2" screws.

75



Next install rakes.

76



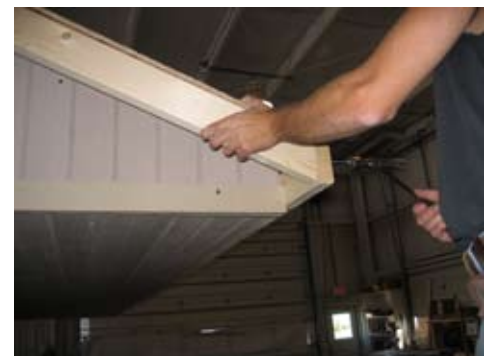
Secure the rakes with 1 1/4" screws or 2" nails from top of sheathing.

77



Secure the rake from the side into the rake block as shown with 2 1/2" screws or 3" nails.

78



Secure the rake in front as shown with 2 1/2" screws or 3" nails.

Gambrel Barn with Overhang Manual



79



Roof sheathing is complete.

80



Install the corner trim and secure with 1 1/4" screws or 2" nails.

81



Secure the trim with 1 1/4" screws or 2" nails.

82



Install the drip edge along the edge of the roof using 1 1/4" screws every inch.

83



Then, install the drip edge along the ends of the structure using 1 1/4" screws, beginning at the front corner.

84



Snip the drip edge as shown to accommodate the bend.

Gambrel Barn with Overhang Manual



85



Bend the drip edge along the edge of the roof, securing it to the roof with a 1 1/4" screw just after the bend. Attach the drip edge every 1".

86



Once at the ridge of the roof, again snip the drip edge to accommodate the bend.

87



Secure the drip edge with a 1 1/4" screw just before the bend. Then, bend the drip edge (along the roof line) and attach along the remaining roof. Complete on the opposite end of the structure.

88



Snap a chalk line along the OSB, consistent with the width of the starter strip. Consult the instructions provided with your shingles package.

89



Align the top of the starter shingles with the chalk line and attach.

90



Add the second section of starter shingles. Then, stagger the next rows of shingles as shown.

Gambrel Barn with Overhang Manual



91



Install the shingles across the entire lower section of the roof.

92



Once at the end of the roof, use a metal square and CAREFULLY trim off excess shingles from the edge.

93



Now begin attaching shingles to the upper section. As shown above, fold the shingles over the bottom section.

94



Continue attaching shingles to the top of the roof section, staggering as shown.

95



Once at the ridge, CAREFULLY trim the excess shingle to expose the ridge opening.

96



Complete the remainder of the top section. Then, install the shingles to the opposite side of the roof, as shown.

Gambrel Barn with Overhang Manual



97



Beginning above the door, cut the ridge cap (as shown) and attach to the roof.

98



Continue capping off the roof until reaching the opposite edge of the structure.

99



Once at the end of the structure, finish the cap with no adhesion strip.

100



Use a narrow crown stapler and secure the shingles where they go over the ridges to hold down.

101



Your structure is now complete!
Again Thank You for purchasing from
Little Cottage Co. !