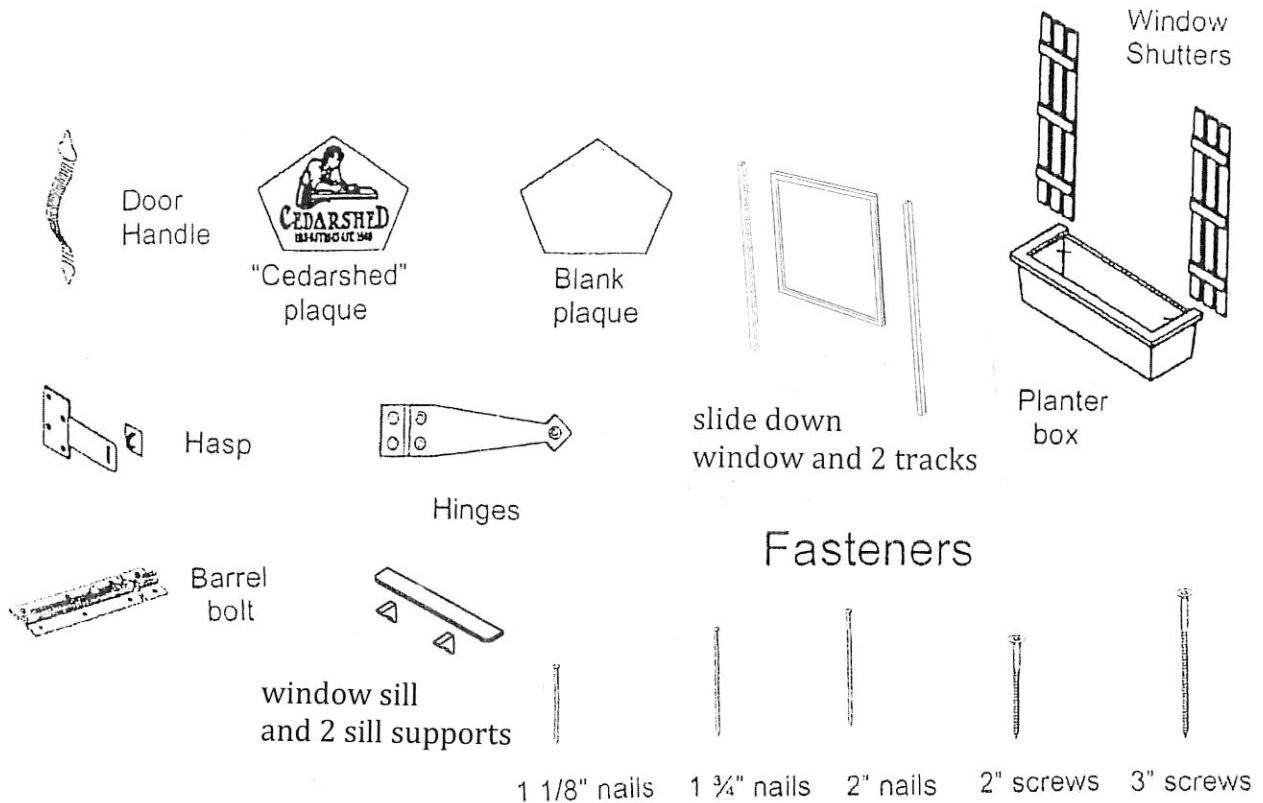


8Ft x 12Ft
Gable Porch Shed



ACCESSORIES AND HARDWARE

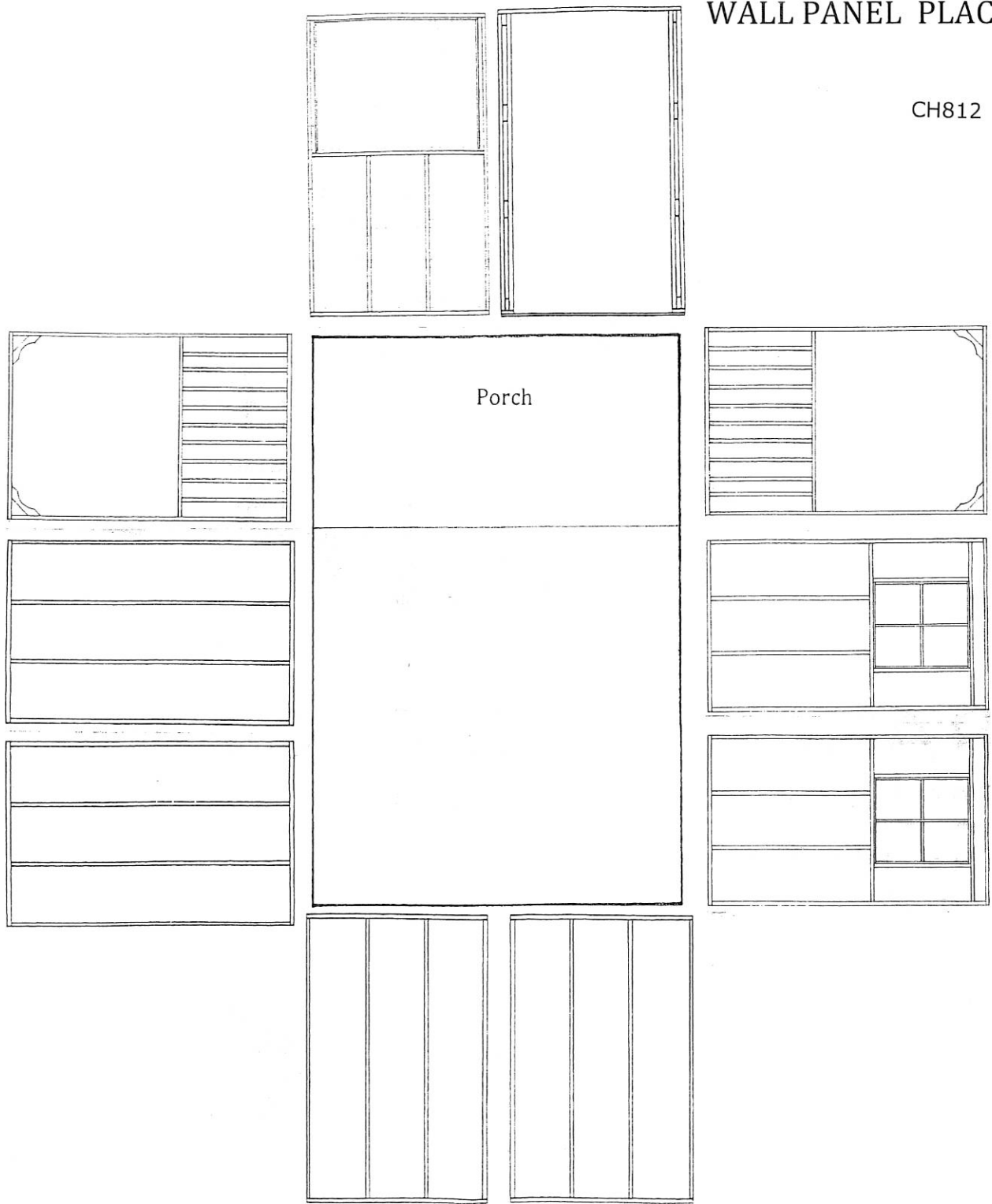
CH812



PART #	DESCRIPTION	DIMENSIONS (where app.)	# OF PCS
ACCESSORIES			
P-H-PLAQSL	Square CS plaque	square plaque	1
P-H-PLAQNL	peak plaque	peak plaque	1
P-1640F	window sill	1 x 6 x 40 7/16	1
P-WSS-001	sill support	3 x 5	2
P-WIN-005	slide down window	34 1/4 x 39	1
P-2275C	sliding window track	2 x 2 x 75 1/4	2
P-FW-001	window box	window box	2
P-SH-001	shutters	shutters	4
FASTENERS			
P-H-NL1.125	nails	1 1/8" nails	25
P-H-NL1.75	nails	1 3/4" nails	300
P-H-NL2	nails	2" nails	50
P-H-SC2	2" Screws	2" Screws	340
P-H-SC3	3" screw	3 " Screws	360
DOOR AND HARDWARE			
C-DR-003	door	Dutch door	1
P-H-THING6	T-Hinges	6 " T-hinges	4
P-H-BBLT4	barrel bolt	4 " barrel bolt	3
P-H-DHAND	door handle	door handle	1
P-H-BHAND	window handle	window handle	1
P-H-HASP	hasp	hasp	1
Instruction manual, questionnaire and driver bit			

WALL PANEL PLACEMENT

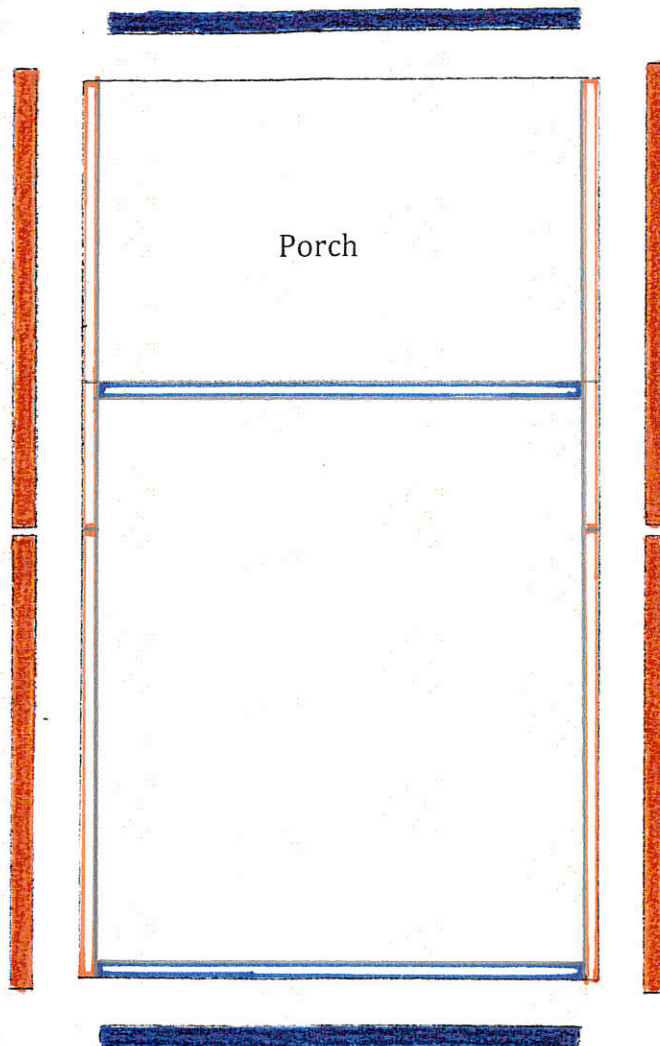
CH812



8 x 12 CLUBHOUSE

PART #	DESCRIPTION	DIMENSIONS (where app.)	# OF PCS
WALL PARTS			
P-2346G	header	2 x 3 x 46 1/2	4
C-BW-003	wall panel	46 1/2" wall panel	4
C-DF-005	single door frame	door frame	1
C-WW-002	window wall	awning windows	2
C-WW-001	window wall	slide down window	1
C-PR-001	porch wall	46 1/2 x 74 3/4	2

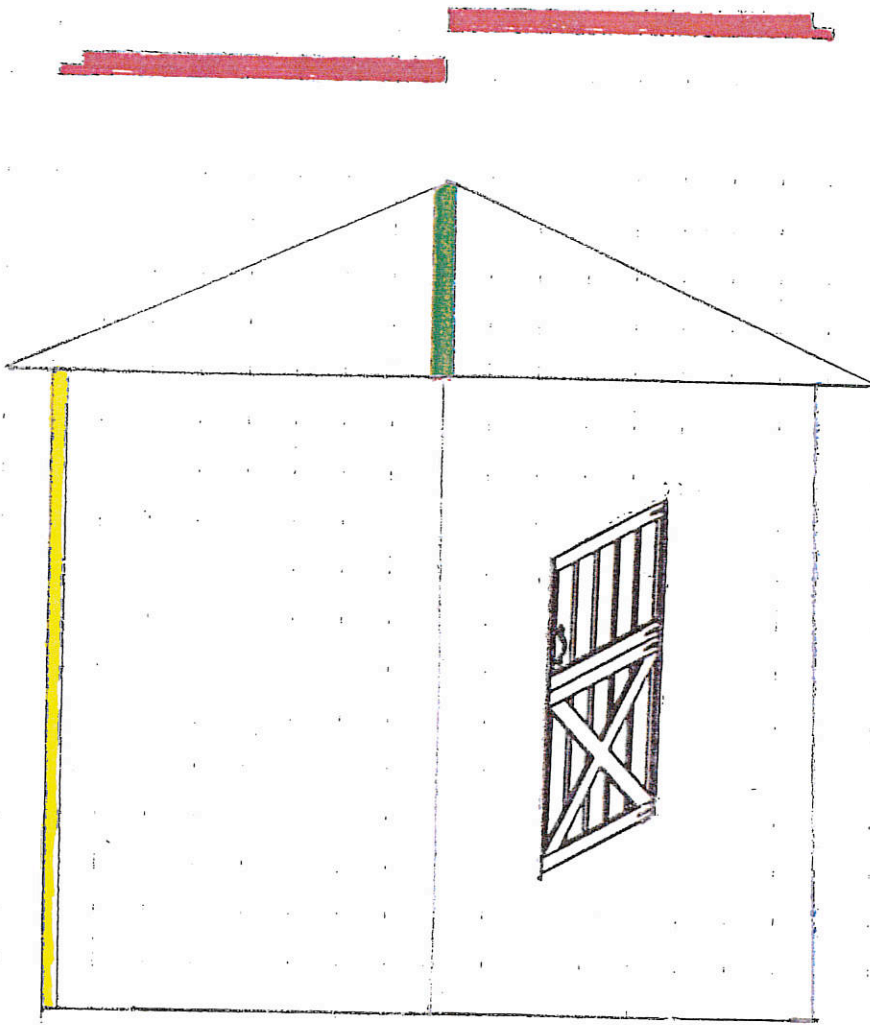
TOP PLATE DETAILS



PART #	DESCRIPTION	DIMENSIONS (where app.)	# OF PCS	CODE
TOP PLATES				
P-2372C	top plates	2 x 3 x 72 1/4	4	
P-2388	top plates	2 x 3 x 88	2	
P-2372C	top plates locations	2 x 3 x 72 1/4	4	
P-2388	top plates locations	2 x 3 x 88	2	

PORCH WALL TRIM DETAIL

CH812
CH816

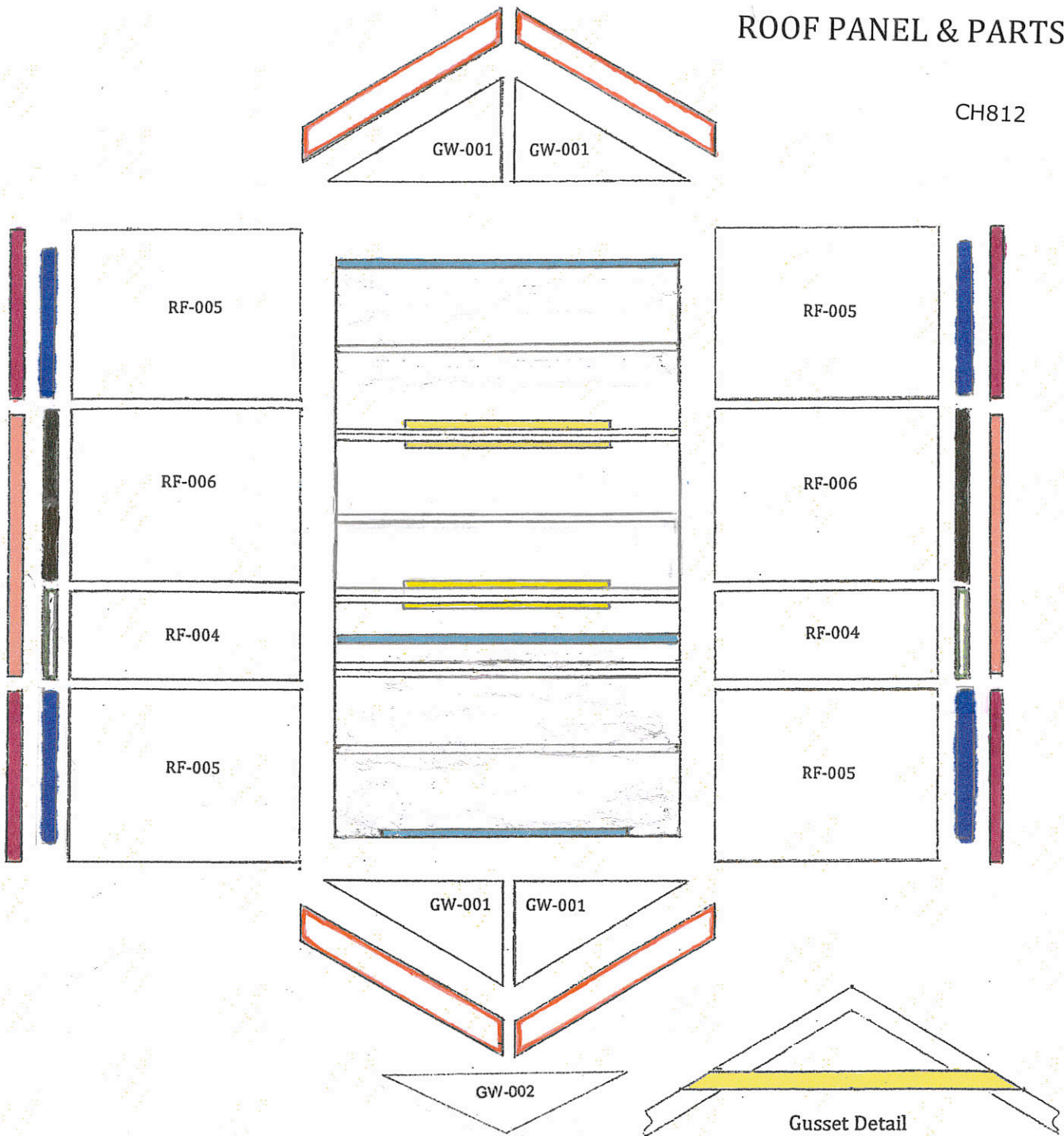


PART #	DESCRIPTION	DIMENSIONS (where app.)	# OF PCS	CODE
DOOR WALL TRIM PARTS				
P-1273C	trim	1 x 2 x 73 1/4	1	
P-1347C	top trim	1 x 3F x 47 1/4 (notched)	2	
P-1221C	gable trim	1 x 2 x 21 1/4	1	

Note: The diagram shows the door placed the right side of the porch. The vertical trim boards would be reversed if the door is placed on the left side of the porch.

ROOF PANEL & PARTS

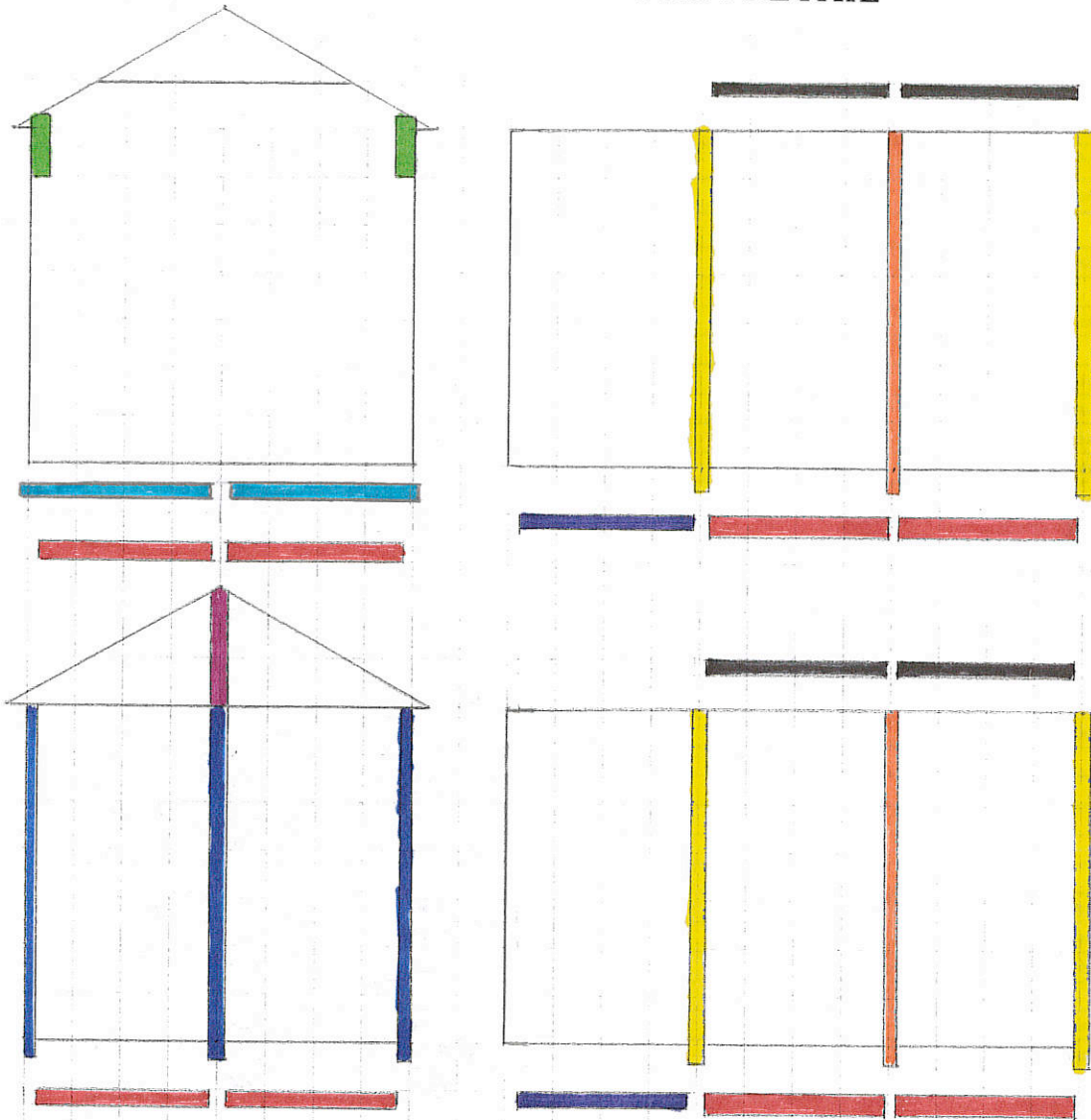
CH812



PART #	DESCRIPTION	DIMENSIONS (where app.)	# OF PCS	CODE
ROOF PARTS (WOOD SHINGLES)				
P-2371KYb	gusset	2 x 3 x 71 3/4	4	
C-RF-004	roof panel	24 x 54 7/8	2	RF-004
C-RF-005	roof panel	42 3/4 x 54 7/8	4	RF-005
C-RF-006	roof panel	46 1/2 x 54 7/8	2	RF-006
C-GW-001	gable wall	21 1/4 x 54 7/8	4	GW-001
C-GW-002	gable wall	16 1/2 x 69	1	GW-002
P-B-G424	soffits	1/2 x 4 x 24	2	
P-B-G437	soffits	1/2 X 4 x 37	4	
P-B-G446G	soffits	1/2 X 4 X 46 1/2	2	
P-1442	fascia	1 X 4 x 42	4	
P-1470G	fascia	1 x 4 x 70 1/2	2	
P-1458GYa	fascia	1 x 4 x 58 1/2	4	
P-H-RFLT12	roofing felt	1 ft x 5 ft	5 sq ft	not shown
P-H-RCAP24	ridge caps	24"	18	not shown
P-H-MFLASS	roof flashing	3" x 12"	30	not shown
GABLE LOCATION				

TRIM DETAIL

CH812



PART #	DESCRIPTION	DIMENSIONS (where app.)	# OF PCS	CODE
TRIM PARTS				
P-1279C	trim	1 x 2 x 79 1/4	2	
P-1280G	trim	1 x 2 x 80 1/2	3	
P-13C79C	trim	1 x 3 1/4 x 79 1/4	4	
P-1221C	gable trim	1 x 2 x 21 1/4	1	
P-B-G445	skirting	1/2 x 4 x 45	4	
P-B-G645	skirting	1/2 x 6 x 45	8	
P-1312Xf	porch trim	1 x 3 x 12	2	
P-B-14B46G	porch trim	1 x 4 1/8 x 46 1/2	2	
P-B-14B47C	porch trim	1 x 4 1/8 x 47 1/4	2	