

# **CEDARHOUSE**

## **10Ft x 20Ft**

### **MODEL CDH1020**



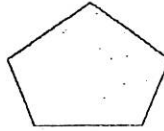
# ACCESSORIES, HARDWARE, AND FASTENERS



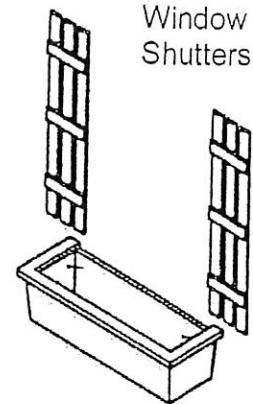
Door Handle



"Cedarshed" plaque

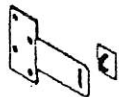


Blank plaque



Window Shutters

Planter box



Hasp



Hinges

## Fasteners



Barrel bolt



1 1/8" nails



1 3/4" nails



2" nails



2" screws

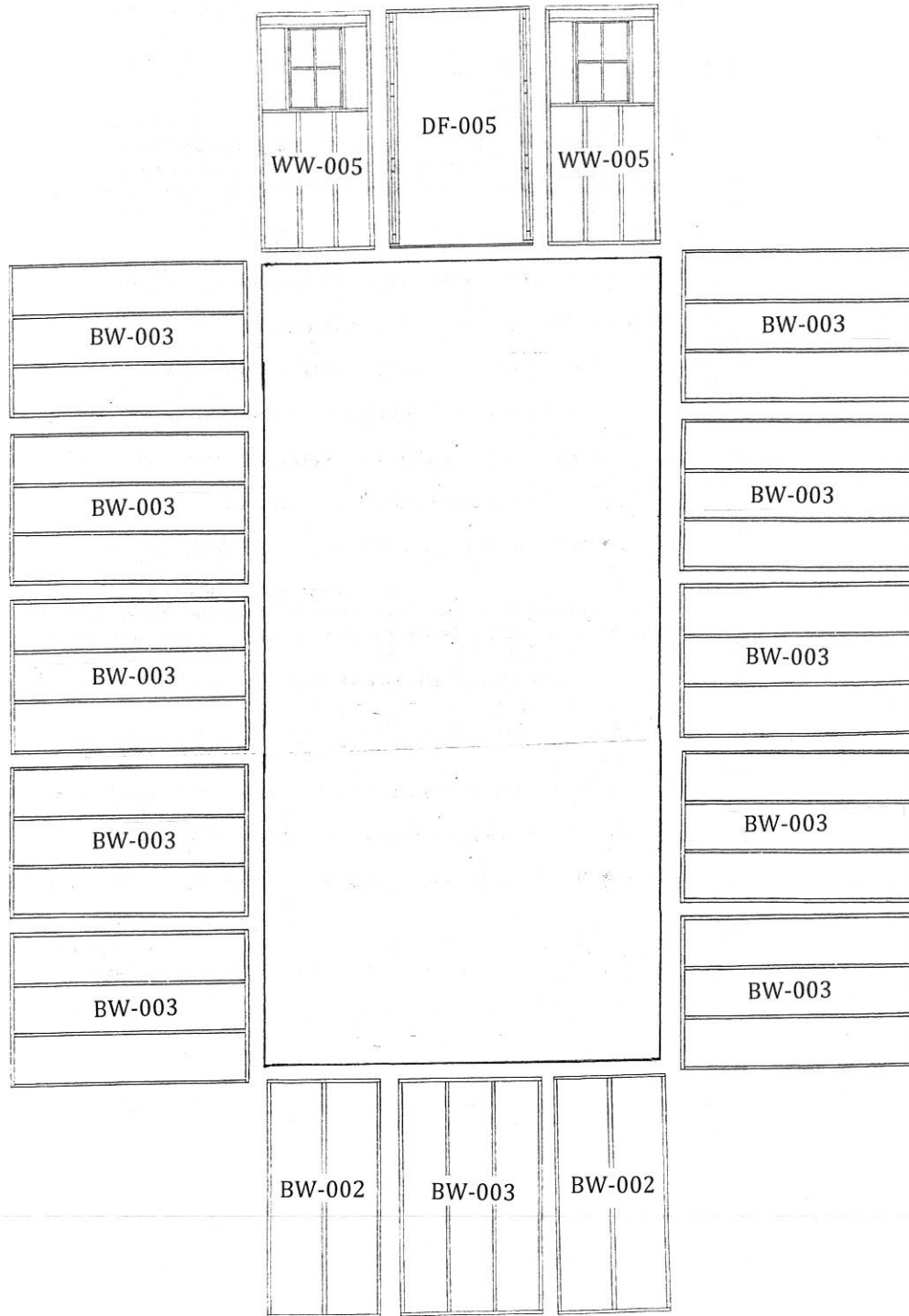


3" screws

## CDH1020

PART #	DESCRIPTION	DIMENSIONS (where app.)	# OF PCS
<b>ACCESSORIES</b>			
P-H-PLAQL	peak CS plaque	peak CS plaque	1
P-H-PLAQL	peak plaque	peak plaque	1
P-FW-001	window box	window box	2
P-SH-001	shutters	shutters	4
<b>FASTENERS</b>			
P-H-NL1.125	nails	1 1/8" nails	50
P-H-NL1.75	nails	1 3/4" nails	500
P-H-NL2	nails	2" nails	100
P-H-SC2	2" screws	2" Screws	325
P-H-SC3	3" screw	3 " Screws	600
<b>DOOR AND HARDWARE</b>			
C-DR-003	Dutch door	Dutch door	1
P-H-THING6	T-Hinges	6 " T-hinges	4
P-H-BBLT4	barrel bolt	4 " barrel bolt	1
P-H-DHAND	door handle	door handle	1
P-H-HASP	hasp	hasp	1

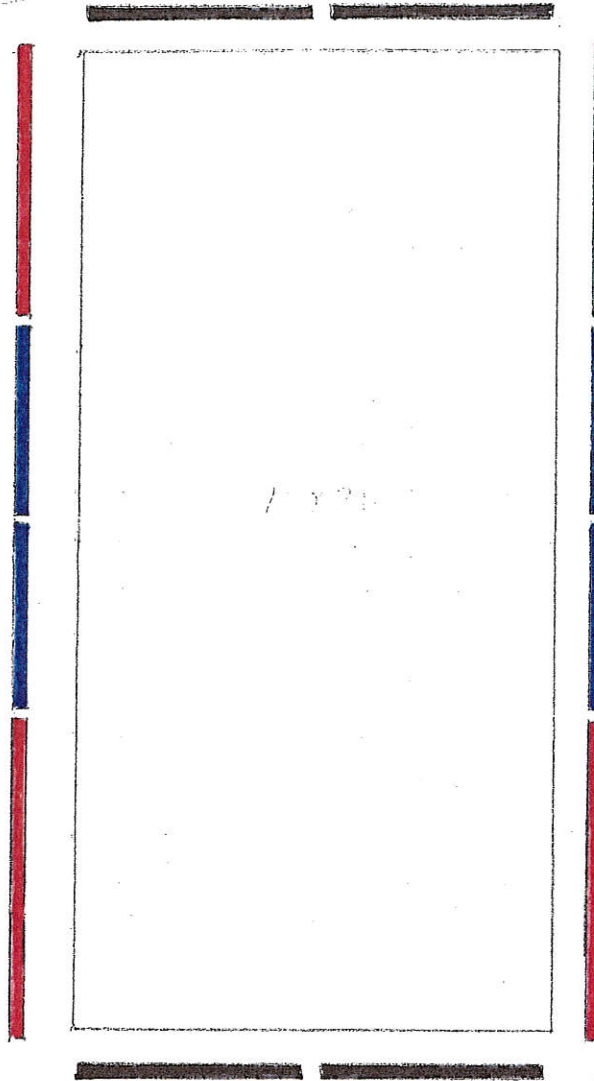
Instruction manual, questionnaire and driver bit



**CEDARHOUSE 10 x 20**

PART #	DESCRIPTION	DIMENSIONS (where app.)	# OF PCS	CODE
<b>WALL PARTS</b>				
P-2334G	header	2 x 3 x 34 1/2	2	not shown
P-2346G	header	2 x 3 x 46 1/2	11	not shown
C-BW-002	wall panel	34 1/2" wall panel	2	BW-002
C-BW-003	wall panel	46 1/2" wall panel	11	BW-003
C-DF-005	single door frame	door frame	1	DF-005
C-WW-005	window wall	window wall with fixed window	2	WW-005

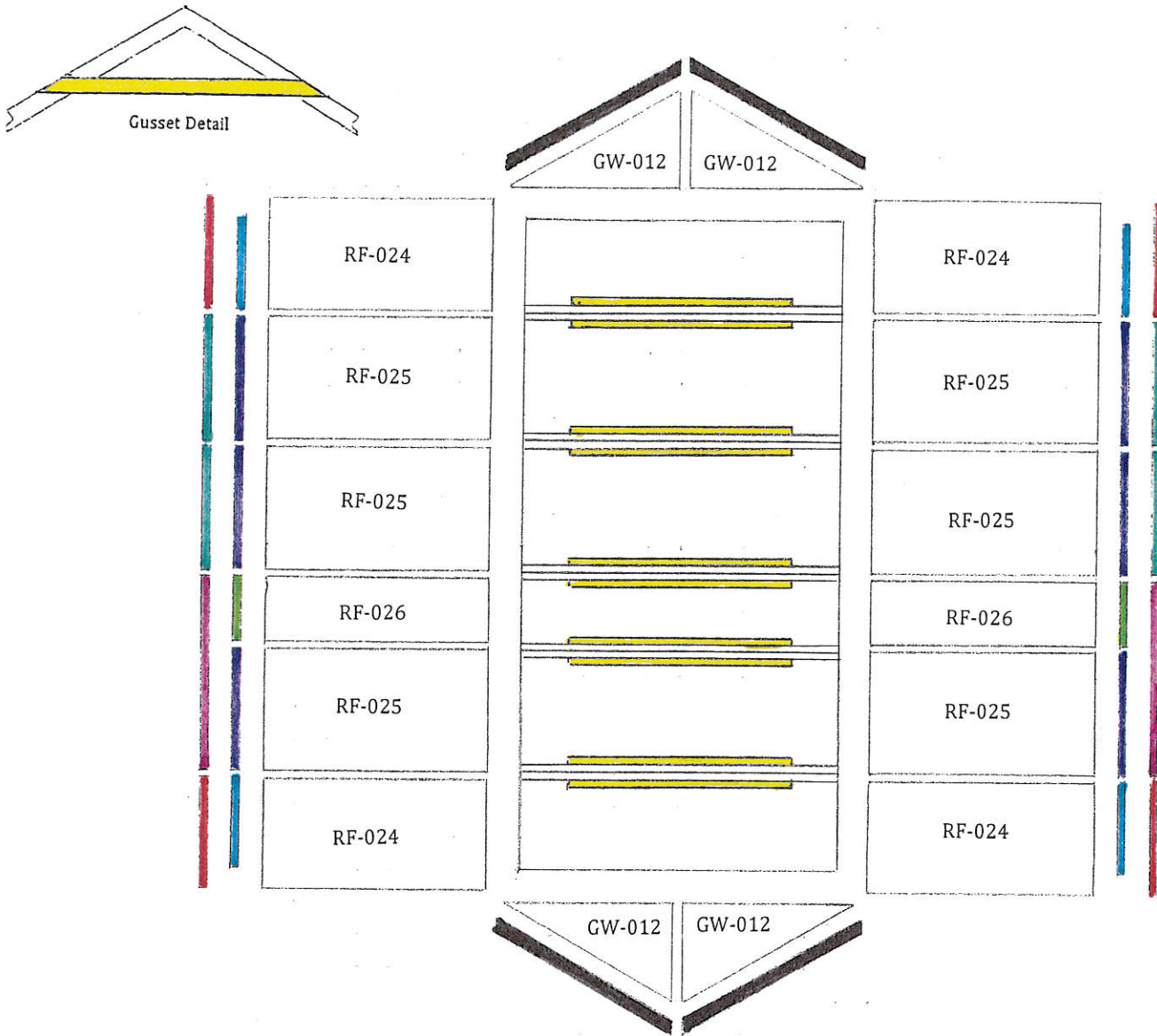
# TOP PLATE PLACEMENT



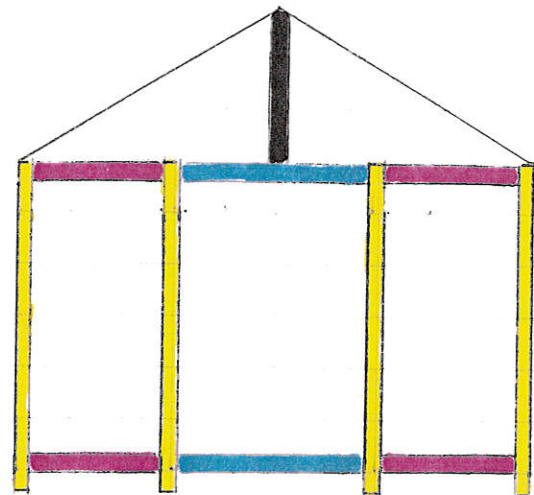
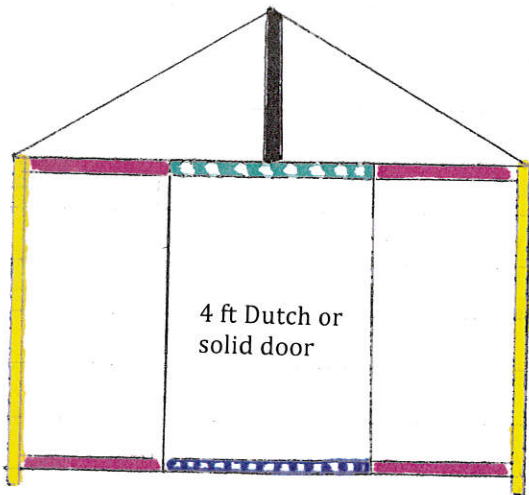
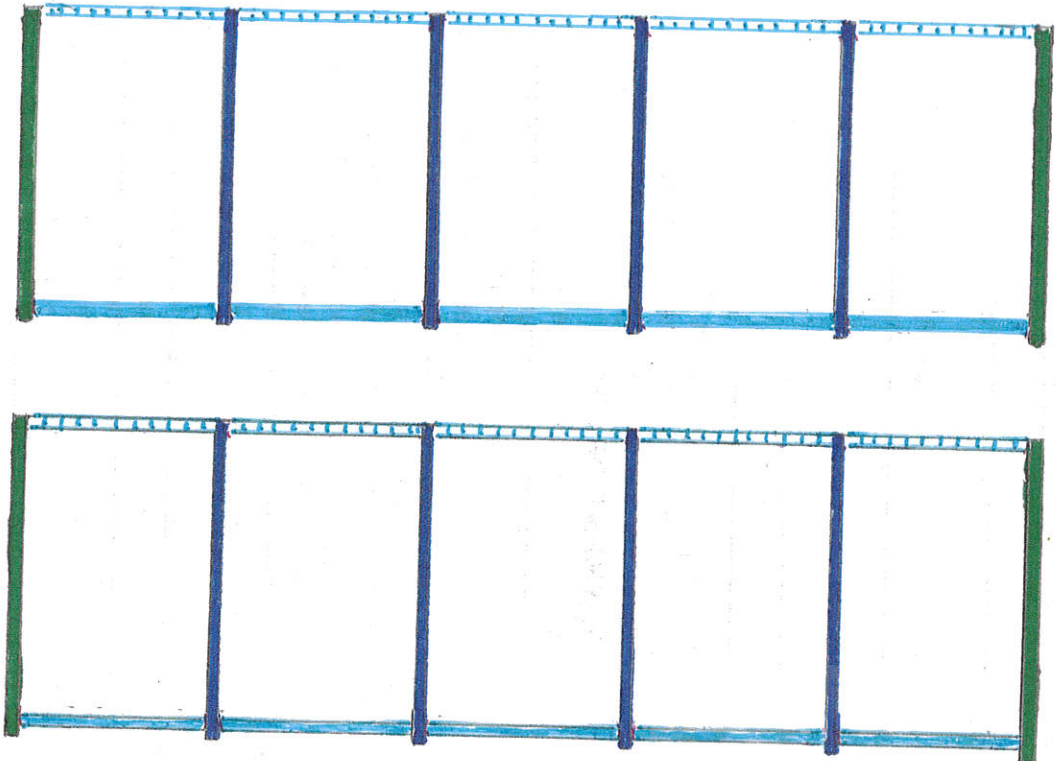
PART #	DESCRIPTION	DIMENSIONS (where app.)	# OF PCS	CODE
<b>Top Plates</b>				
P-2355C	top plates	2 x 3 x 55 1/4	4	
P-2372C	top plates	2 x 3 x 72 1/4	4	
P-2346G	top plates	2 x 3 x 46 1/2	4	



# ROOF PANELS AND PARTS



PART #	DESCRIPTION	DIMENSIONS (where app.)	# OF PCS	CODE
<b>ROOF PARTS (WOOD SHINGLES)</b>				
P-2371KYb	gusset	2 x 3 x 71 3/4	10	
C-GW-012	gable wall	25 3/4 x 67 1/8	4	GW-012
C-RF-024	roof panel	42 3/4 x 67 1/8	4	RF-024
C-RF-025	roof panel	46 1/2 x 67 1/8	6	RF-025
C-RF-026	roof panel	24 x 67 1/8	2	RF-026
P-B-G424	soffits	1/2 x 4 x 24	2	
P-B-G437	soffits	1/2 x 4 x 37	4	
P-B-G446G	soffits	1/2 x 4 x 46 1/2	6	
P-1442	fascia	1 x 4 x 42	4	
P-1446G	fascia	1 x 4 x 46 1/2	4	
P-1471YA	gable fascia	1 x 4 x 71	4	
P-1470G	fascia	1 x 4 x 70 1/2	2	
P-H-RFLT12	roofing felt	1 ft x 5 ft	10 sq ft (2)	not shown
P-H-RCAP24	ridge caps	24"	30	not shown
P-H-MFLASS	roof flashing	3" x 12"	60	not shown



PART #	DESCRIPTION	DIMENSIONS (where app.)	# OF PCS	CODE
<b>Trim</b>				
P-1226	gable trim	1 x 2 x 26	2	
P-1279C	trim	1 x 2 x 79 1/4	8	
P-1280G	trim	1 x 2 x 80 1/2	6	
P-13C79C	trim	1 x 3 1/4 x 79 1/4	4	
P-B-G445	skirting	1/2 x 4 x 45	10	
P-B-G645	skirting	1/2 x 6 x 45	12	
P-B-G633	skirting	1/2 x 6 x 33	8	
P-14B48	door skirting	1 x 4 1/8 x 48	1	
P-1348	door trim (hor.-wide)	1 x 3 x 48	1	
P-11K48	door trim (hor.-narrow)*	1 x 1 3/4 x 48	1	not shown

\* door trim (narrow) is used when the door is located on ridge side of the shed