



# Stirling

Fair-isle fingerless mitts with a gusset thumb. These mittens will fit most adult hands, but size adjustments can be made by going up or down a needle size.

**Yarn:** Dawn Orchid BFL Fingering 25 (100% Bluefaced Leicester wool; 90yds per 25g); one skein each:  
 Colour A: Last Ember  
 Colour B: Boreal  
 Colour C: Late Sumac  
 Colour D: Winter Sun  
 Colour E: Burnished Oak

**Needles:** Set of four double pointed needles, or long circular for magic loop:  
 2.5mm-2.75mm for adult small;  
 3.0mm-3.25mm for adult large.  
*and* a set of needles 0.5mm smaller for ribbing.

**Gauge:** 32sts = 4" (10cm) in colourwork stockinette

**Finished Size:** 7 ½" - 8 ½" around palm.

**Notions:** Stitch markers, stitch holders or waste yarn, darning needle.

## CUFF

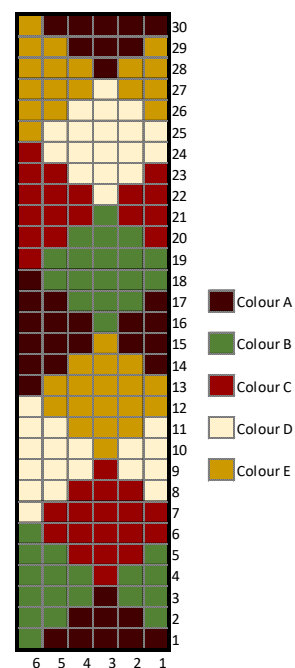
With smaller ribbing needles and Colour E, CO 60sts.

Change to Colour A and join in the round.

[K2, P2] around until work measures 1 ¼".

Change to larger needles, K one round. Begin colour work pattern as shown in **Main Chart**, starting at bottom right and reading right-to-left. The 6-stitch motif is repeated ten times in each row.

*It is recommended that unused colours be carried up the inside of the mitten, instead of cutting yarn and then rejoining when needed later. Carried yarns can be wrapped by in-use yarns every few rows to avoid tangling.*



**Main Chart**

Work rows 1-18 of **Main Chart**, knitting all sts in specific colour.

## GUSSET

Set up round (Round 19 in chart): maintain colour pattern from **Main Chart**, place markers as:

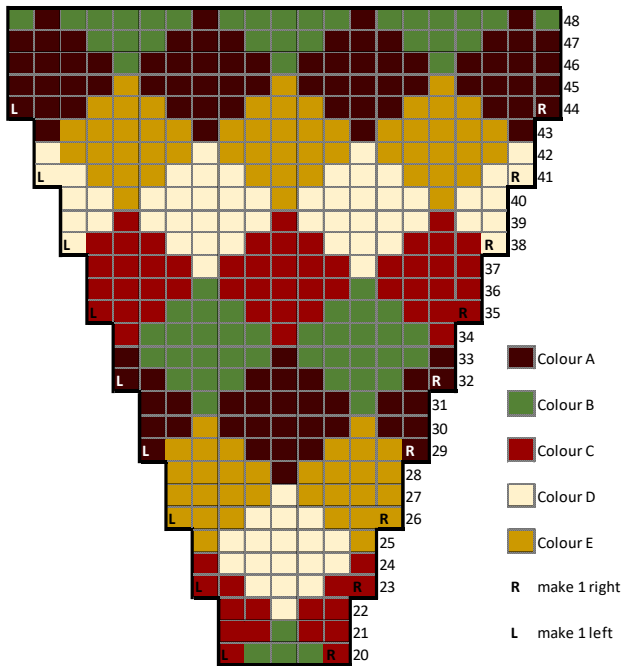
### Right Hand:

Work 31 sts, pm, work 3 sts, pm, work to end of round.

### Left Hand:

Work 25 sts, pm, work 3 sts, pm, work to end of round.

Stiches between markers should now be knit as specified in **Gusset Chart**. Stiches outside of markers should continue to follow established pattern from **Main Chart**. (*Main chart repeats to Round 1 after the completion of Round 30*).



**Gusset Chart**

Increasing Round (*Round 20*): K to marker, sm, M1R, K to marker, M1L, sm, K to end of round.

Work two rounds, maintaining colour pattern in respective charts (*Rounds 21 & 22*)

Repeat these last three rounds eight more times (*21 sts between markers*). (*Rounds 23-46*)

Work two more rounds without increasing (*Rounds 47 and 48 on the chart*).

## DIVIDE FOR THUMB

K to marker, rm, put next 21 sts on holders or waste yarn, rm, CO 9sts in established pattern from **Main Chart** using backwards loop, K to end of round. (*66sts*)

Continue following **Main Chart** (*6 sts motif is now repeated 11 times each round*), returning to Round 1 again after completion of Round 30, and ending with the completion of Round 6. Break all yarns except Colour A.

Change to Colour A and K one round.

K another round, decreasing 2 sts evenly. (*64sts*).

Change to smaller needles, and work [K2 P2] ribbing for ten rounds.

Change to Colour E, bind off loosely in rib.

## THUMB

**Right Hand:** Put 21 sts from gusset back on larger needles. Using Colour A, K across all sts, then pick up and knit 9 sts from inside of thumb. (*30sts*).

**Left Hand:** Using Colour A and larger needles, pick up and knit 9 sts from inside of thumb, then K across 21 held gusset sts. (*30sts*).

**Both Hands:** K one round, decreasing 2 sts evenly around. (*28sts*).

Change to smaller needles and work [K2 P2] ribbing for 10 rounds.

Change to Colour E, bind off loosely in rib. Weave in all ends and block.

### Abbreviations:

K – knit  
 P – purl  
 M1L – make 1 st, left leaning  
 M1R – make 1 st, right leaning  
 pm – place marker  
 sm – slip marker  
 rm – remove marker  
 CO – cast on  
 St(s) – stitch(es)  
 Rnd – round