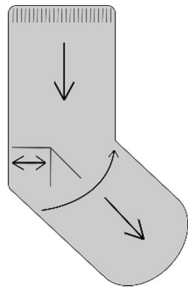




These lace panelled socks are knit from the top down with a heel-flap construction. The toe is grafted together. This pattern will fit most adult foot sizes as the foot section can be knit to desired length.



Yarn: Manos del Uruguay Alegria (75% superwash merino wool, 25% nylon; 445 yds per 100g); 1 Skein

Needles: 2.25mm/US1 double pointed needles or longer circular for magic loop.

Gauge: 30 st = 4"/10cm in stockinette

Other tools: darning needle.

CUFF AND ANKLE

Cast on 68 sts. Join in the round, being careful not to twist.

*K1, P1, repeat from *, until cuff measures approx. 1.25" from cast on edge.

K one round.

Lace Pattern: (follow written OR chart instructions)

Round 1: *YO, K2, SSK, K8, K2tog, K2, YO, P1, rep from * to end of round.

Rounds 2, 4, 6, 8, 10: *K16, P1, rep from * to end of round.

Round 3: *K1, YO, K2, SSK, K6, K2tog, K2, YO, K1, P1, rep from * to end of round.

Round 5: *K2, YO, K2, SSK, K4, K2tog, K2, YO, K2, P1, rep from * to end of round.

Round 7: *K3, YO, K2, SSK, K2, K2tog, K2, YO, K3, P1, rep from * to end of round.

Round 9: *K4, YO, K2, SSK, K2tog, K2, YO, K4, P1, rep from * to end of round.

Repeat Rounds 1-10 a total of eight times, or until cuff is desired length.

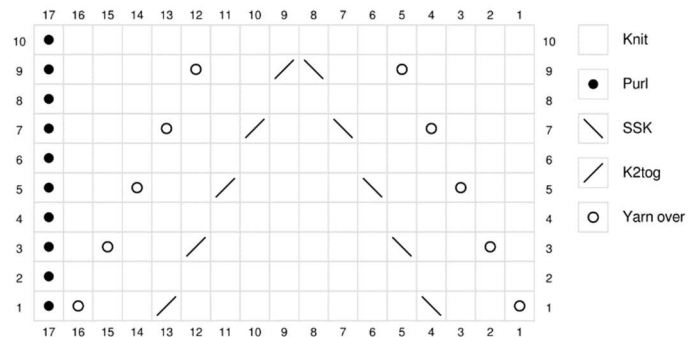


Chart for Lace Pattern
(repeat 4 times each round)

HEEL FLAP

This section is worked flat (back and forth). The 35sts that will make up the top of the foot (two lace panels plus the bordering purl columns on both sides) are held on spare needles or the magic loop cord.

Setup Row 1 (RS): [Sl1, K1] fifteen times, Sl1, K2tog. Turn work. *You will likely have 1 st left on your needle before turning (a purl st). Move this one st to the other needle(s), it will be part of the top section.*

Setup Row 2 (WS): Sl1, P31. Turn work.

Row 1 (RS): *Sl1, K1, repeat from * sixteen times (to end of heel flap sts)

Row 2 (WS): Sl1, P to end of row (start of heel flap sts).

Repeat Rows 1 and 2 fourteen more times. Repeat Row 1 one more time.

TURNING HEEL

Setup A (WS): Sl1, P17, P2tog, P1, turn.

Setup B (RS): Sl1, K5, SSK, K1, turn.

Row 1 (WS): Sl1, P to 1 st before gap made by previous turn, P2tog, P1, turn.

Row 2 (RS): Sl1, K to 1 st before gap made by previous turn, SSK, K1, turn.

Repeat rows 1 and 2 until all heel flap sts are included in the turn. (18st remaining from heel flap).

GUSSET

Pick up and knit 16 sts along the left side of the heel flap. PM, or note this as Left Side Point (LSP) in some manner.

P1, work across the next 34 instep stitches in established pattern (beginning with Lace Pattern Rnd 1).

PM, or note this as Right Side Point (RSP) in some manner.

Pick up and knit 16 sts along the right side of the heel flap, then knit 9 sts from heel.

The beginning-of-round now occurs at this point, in the middle of the bottom of the heel. PM, or note this as Beginning of Round (BOR) in some manner.

Decreasing Round 1: K to 3 sts before LSP, K2tog, K1, work 35sts in established pattern, K1, SSK, K to end of round. (2 sts decreased)

Decreasing Round 2: K to LSP, work 35sts in established pattern, K to end of round.

Repeat Decreasing Rounds 1 and 2 eight more times (67sts remain).

FOOT AND TOE

Continue as established, working Lace Pattern on top of the foot (maintaining purl borders), and plain stockinette (K every stitch) on the bottom, until the sock measures 2¼"/5.5cm less than the total desired length.

Set Up Round: K to LSP, K2tog, K15, K2tog, K14, SSK, K to end of round. (3 purl sts tucked under knit decreases; 32 sts remain on each top and bottom).

K 1 round.

Decreasing Round A: K to 3 sts before LSP, K2tog, K1, K1, SSK, K to 3 sts before RSP, K2tog, K1, K1, SSK, K to end of round. (4 sts decreased)

Decreasing Round B: K

Repeat Decreasing Rounds A and B seven more times (32 sts remain)

K to LSP, then distribute sts evenly between 2 needles (16 sts on each, LSP and RSP being at the ends).

Break yarn with 18" tail and thread onto a darning needle (DN). Hold the two needles parallel in the left hand, begin at the right-most stitches:

1. Insert DN into 1st st on front needle purlwise and pull yarn through, leaving st on needle.
2. Insert DN into 1st st on rear needle knitwise and pull yarn through, leaving st on needle.
3. Insert DN into 1st st on front needle knitwise, letting st fall off needle, then insert DN into next st on front needle purlwise, leaving st on needle, pull yarn through.
4. Insert DN into 1st st on rear needle purlwise, letting st fall off needle, then insert DN into next st on rear needle knitwise, leaving st on needle, pull yarn through.

Repeat Steps 3 and 4 until all sts are grafted together. Weave in all ends. Work second sock same as the first.

Abbreviations:

K – knit

P – purl

pm – place marker

YO – yarn over

SSK – slip 2 sts knitwise, move both to left needle and K 2 together through back of loop

K2tog – knit 2 together

P2tog – purl 2 together

Sl1 – slip stitch

RS/WS – right side/wrong side

St(s) – stitch(es)

LSP/RSP – left side point/right side point

BOR – Beginning of round

DN – darning needle