



Fingerless mitts with a simple lace motif and short or long options. These mittens will fit most adult hands, but size adjustments can be made by going up or down a needle size.

Yarn: Illimani Sabri Tweed (35% Ultrafine Merino, 20% Baby Alpaca, 15% Silk, 15% Yak, 15% Donegal (wool); 137yds per 50g). 1 skein (short) or 2 skeins (long)

Needles: 3.5mm (US4) set of four double pointed needles, or long circular for magic loop.

Gauge: 24sts = 4" (10cm) in stockinette

Finished Size: 7¾" around palm (unstretched)

Notions: Stitch markers, stitch holders or waste yarn, darning needle.

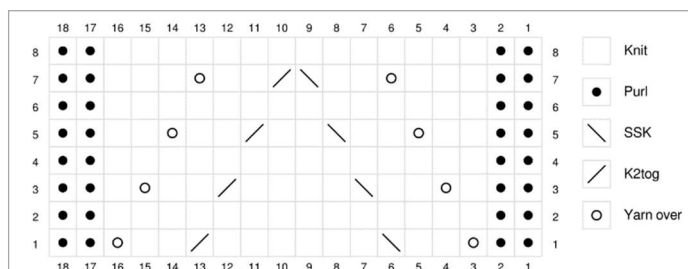
CUFF

CO 52 sts and join in the round.

Work [K2 P2] ribbing for 1.5".

Set Up: Work in established rib for 34 sts, pm, P2, K14, P2, pm

Continue working in the round, working Lace Panel pattern between the stitch markers and established [K2 P2] ribbing everywhere else. Follow either the Lace Panel chart or written instructions.



Row 1: P2, YO, K2, SSK, K6, K2tog, K2, YO, P2.

Rows 2, 4, 6, 8: P2, K14, P2.

Row 3: P2, K1, YO, K2, SSK, K4, K2tog, K2, YO, K1, P2.

Row 5: P2, K2, YO, K2, SSK, K2, K2tog, K2, YO, K2, P2.

Row 7: P2, K3, YO, K2, SSK, K2tog, K2, YO, K3, P2.

Work the eight rows of the Lace Panel once (for Short version) or nine times (for Long version)

GUSSET

Left Hand Set Up:

K3, [K2tog, K2] 5 times,
K2tog, K1, pm, K1, K2tog,
K1, pm, K1, K2tog, K1,
sm, work Lace Panel as
established, sm. (44sts)

Right Hand Set Up:

K3, pm, K2tog, K2, pm,
[K2tog, K2] 6 times,
K2tog, K1, sm, work Lace
Panel as established, sm.
(44 sts)

Increasing Round: K to first marker, sm, m1L, K to next marker, m1R, sm, K to Lace Panel marker, sm, work Lace Panel as established, sm. (2 sts inc)

Work 2 rounds, continuing Lace Panel as established and K everywhere else.

Repeat these three rounds another 6 more times. (58sts total; 17sts between thumb markers).

DIVIDE FOR THUMB

K to first marker, remove marker and put 17 thumb stitches on holder or scrap yarn. CO 3 sts using backwards loop, remove second marker, knit to Lace Panel and work as established. (44sts)

Work 12 rounds, continuing Lace Panel as established and K everywhere else.

Work 9 rounds of [K2, P2] all the way around.

Bind off loosely in rib.

THUMB

Put 17 sts on holders back on needles and also pick up 3 stitch from the cast on edge on the inside of the thumb. (20sts)

Beginning with the held sts, K1, pm. This is now the Beginning of Round for the thumb stitches. The one stitch on the right moves to the end of the round.

K 15, SSK, K1, K2tog. (18 sts)

K15sts, slip 1, K2tog, pass slipped stitch over. (16 sts).

Work 8 rounds of [K2, P2] ribbing. Bind off loosely in rib.

Weave in all ends and block.



Abbreviations:

K – knit

P – purl

K2tog – Knit 2 together

SSK – slip 2 sts knitwise,
move both to left
needle and K 2
together through back
of loop

M1L – make 1 st, left
leaning

M1R – make 1 st, right
leaning

pm – place marker

sm – slip marker

CO – cast on

St(s) – stitch(es)