



Moffat

Simple worsted-weight mittens a faux-thrummed effect.

Yarn: Berroco Vintage (52% Acrylic, 40% Wool, 8% Nylon; 220 yds per 100g) or Cascade 220 (100% Wool; 220 yds per 100g) or Berroco Ultra Alpaca (50% Alpaca, 50% Wool; 220 yds per 100g).

- 200 yds of Main Colour (MC)
- 50 yds of Contrast Colour (CC)

Needles: 4.0mm (US6) and 5.0mm (US8) double pointed needles (set of 4), or longer circular for magic loop.

Gauge: 19 sts = 4"/10cm in colour patterned stockinette on larger needles

Other tools: stitch markers, darning needle, stitch holders/safety pins

CUFF

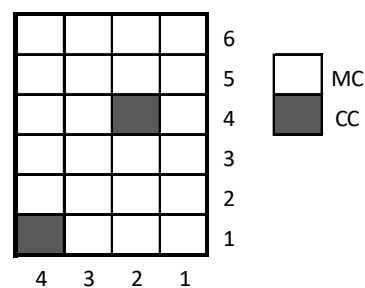
Using smaller needles and MC, CO 40 sts. Distribute stitches as needed and join in the round.

Work [K1, P1] ribbing for 3".

Change to larger needles, and K one round.

GUSSET

Round 1: Join CC and work Round 1 of the Colourwork Chart. Each row of the Colourwork Chart will be repeated ten times around.



Colourwork Chart

Round 2:

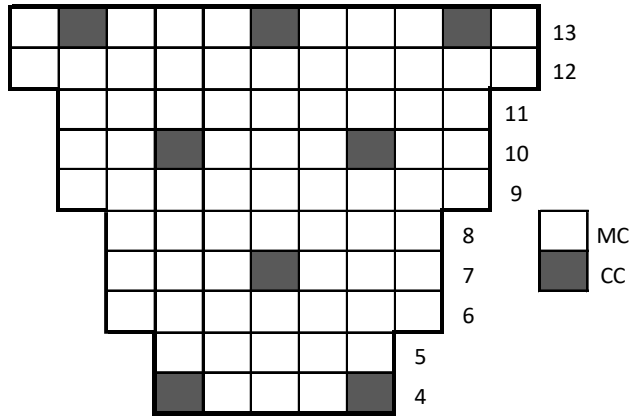
Left Hand:
K14, pm, K3, pm, K to end of round.

Right Hand:
K2, pm, K3, pm, K to end of round.

Round 3: K to marker, sm, K1, M1L, K to 1 st before marker, M1R, K1, sm, K to end of round.

Round 4: Knitting all sts, follow Row 4 of Colourwork Chart up to the first marker and then again after the

second marker, resuming chart 3 sts later. Between the markers, follow Gusset Chart.



Gusset Chart

Round 5: K all sts

Round 6 (and Rounds 9 and 12): K to marker, sm, K1, M1L, K to 1 sts before marker M1R, K1, sm, K to end of round.

Rounds 7, 8, 10, 11, 13: K all sts, following Colourwork Chart and Gusset Chart as established.

Round 14: K to marker, rm, put next 11 sts on scrap yarn or safety pins, CO 3 sts using backwards loop, rejoin to rest of work and K to end of round.

Round 15: K all sts (*this corresponds to Row 3 in Colourwork Chart*).

Continue working the rest of the mitten, knitting all sts in the round, using established colour pattern from Colourwork Chart. Work until mitten is about ½" less than the desired finished length (to the tip of the longest finger when worn), ending with a Round 1 or 4 from the Colourwork Chart. Break CC.

*K2, K2tog, rep from * to end of round. (30 sts remain).

*K1, K2tog, rep from * to end of round. (20 sts remain).

K2tog around. (10 sts remain).

K2tog around, again. (5 sts remain).

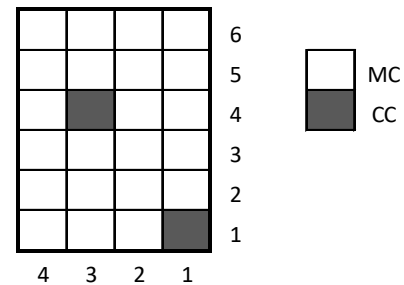
Break yarn and draw through remaining sts and pull tight.

THUMB

Pick up 5 sts from CO edge on inside of thumb (the 3 cast on sts plus one on either side). Put the 11 held stitches back on needles also.

Starting with picked up sts and working with MC, K around all thumb sts. (16 sts).

Rejoin CC and resume colour pattern, following Thumb Chart.



Thumb Chart

Continue knitting thumb in the round in established colour pattern, until the work reaches the tip of the thumb when worn. Break CC.

K2tog around. (8 sts remain).

K2tog around, again. (4 sts remain).

Break yarn and draw through remaining sts, pull tight.

Weave in all ends and wet block.

Abbreviations:

K – knit
 P – purl
 pm – place marker
 sm – slip marker
 rm – remove marker
 m1L – make 1 st, left leaning
 m1R – make 1 st, right leaning
 K2tog – knit 2 together
 CO – cast on
 MC – Main Colour
 CC – Contrast Colour
 St(s) – stitch(es)
 Rnd(s) – round(s)