



An updated version of the traditional Scandinavian design, these 'fair-isle' mittens feature a long cuff, a gusseted thumb, and a soft liner tucked inside.

Yarn: MC: Malabrigo Arroyo (100% superwash merino wool; 335 yds per 100g); 1 skein. *Shown in 58 Borrajas*

CC: Cascade 220 Superwash Sport (100% superwash merino wool; 136yds per 50g); 1 skein. *Shown in 817 Aran*

Liner: Amano Ayni (80% baby alpaca, 20% silk; 218yds per 50g); 1 skein. *Shown in 5010 Quartz.*

Needles: 4.0mm/US6 set of double pointed needles
3.25mm/US4 set of double pointed needles
(longer circular needles used as magic loop may be substituted if preferred).

Gauge: Outer: 25sts = 4"/10cm on 4.0mm needles
Inner: 26sts = 4"/10cm on 3.25mm needles

Finished Size: 8" palm circumference, 11" long.

Other Tools: darning needle, stitch holders, stitch markers

I-CORD CAST ON

Using 2 dpns of the larger size and MC, CO 3sts. Hold in right hand.

Step 1: Sl 3sts knitwise from right needle to left.

Step 2: Kf&b, K2

Repeat Steps 1 & 2 until there are 56sts on right needle.

Finishing round: Repeat Step 1. K2tog, K1. Sl 2sts from right needle to left. K2tog. (54sts)

Divide sts between 3 dpns and join in the round, being careful not to twist.

WRIST

Start working the Main Chart from the bottom left, reading right-to-left, adding CC when needed.

Work rows 1-21 of Main Chart.

THUMB GUSSET

The Right and Left mittens are worked the same, except for the placement of the thumb.

In the Right Mitten, the stitches within the **red** lines are replaced with the Thumb Chart.

In the Left Mitten, the stitches within the **blue** lines are replaced with the Thumb Chart.

Right Hand

Round 21: Work 3 sts (*as charted in Main Chart*), pm, M1L, K1, M1R (*as shown in Thumb Chart*), pm, continue with Main Chart, starting with Stitch 5, to end of round.

Rounds 22-41: Work to marker, sm, work Thumb Chart, sm, work Main Chart, starting with Stitch 5, to end of round.

Round 42: Divide for Thumb (removing markers as you go): Work to marker, put 21 thumb sts on holders, CO 1, rejoin and work Main Chart, starting with Stitch 5, to end of round. (*54sts on needles*)

Left Hand

Round 21: Work 23 sts (*as charted in Main Chart*), pm, M1L, K1, M1R (*as shown in Thumb Chart*), pm, continue with Main Chart, starting with Stitch 25, to end of round.

Rounds 22-41: Work to marker, sm, work Thumb Chart, sm, work Main Chart, starting with Stitch 25, to end of round.

Round 42: Divide for Thumb (removing markers as you go): Work to marker, put 21 thumb sts on holders, CO 1 st, rejoin and work Main Chart, starting with Stitch 25, to end of round. (*54sts on needles*).

Both Hands:

Work rounds 43-72 of Main Chart.

TOP

Work rounds 73-81 of Main Chart, decreasing 4sts per round (*2 on either side of each CC stripe*). (*18sts remaining*). (*For Round 81, leave CC yarn at BOR; work only MC sts and slip CC sts.*) Break MC.

Divide remaining sts evenly between two needles. Break CC with an 18" tail. Graft sts together using Kitchener Stitch.

THUMB

Put held sts on dpns. Pick up 3sts along cast on edge (CO st + one on either side). (*24sts*)

Distribute sts evenly on three dpns and start working with the right-most of the held sts.

Work rounds 42-60 Thumb Chart, reading from right-to-left.

Break CC. Work rounds 61-62 with just MC.

Break MC and pull through remaining sts. Draw tight & bind off.

Weave in all ends before starting liner.



LINER

Using smaller needles, starting at the same point as the i-cord cast-on started, PU & K 54sts along inside edge of i-cord with liner yarn. Distribute between 3 dpns.

Decreasing Round: *K7, K2tog, rep from * to end of round. (48sts)

K until liner measures 2½" from pick up edge.

LINER GUSSET

Right Hand

Set Up Round: K45, pm, K1, pm, K to end of round.

Left Hand

Set Up Round: K27, pm, K1, pm, K to end of round.

Both Hands:

Increasing Round A: K to marker, sm, M1L, work to marker, M1R, sm, K to end of round.

Increasing Round B: K all sts, slipping markers as you go.

Repeat Increasing Rounds A and B nine more times. (20 sts increased; 21 sts between markers; 68sts total on needles).

Divide for Thumb: K to marker, sm, put 21sts on holders, CO 3 sts, sm, rejoin and K to end of round. (50sts)

K 1 round, slipping markers as you go.

Decreasing Round (remove markers as you go): K to marker, sm, sl1, K2tog, pssso, sm, K to end of round. (48sts).

K until liner measures 9½" from picked up edge at the cuff.

LINER TOP

Set up round: K24, pm, K24, pm

Decreasing Round: *K1, SSK, K to 3 sts before marker, K2tog, K1, sm, rep from * once more. (2sts decreased).

Repeat Decreasing Round eight more times. (12 sts remain).

Divide sts between two needles and graft as on Outer.

LINER THUMB

Put held sts back on needles. Pick up and knit 3 sts along inside cast on edge, then knit across held sts. Divide sts evenly between dpns. (24sts).

Sl1, K2tog, pssso, K to end of round. (22sts).

K until thumb measures 2¼" from picked up sts.

Decreasing Round 1: K2tog around. (11sts).

Decreasing Round 2: K2tog to last st, K1. (6sts).

Break yarn and pull through remaining sts. Draw tight & bind off. Weave in all ends.

Abbreviations:

K – knit

P – purl

K2tog – knit 2 together

SSK – Slip 2 stitches knitwise, insert left needle into front of slipped sts, K2tog through back of loop

Kf&b – Knit into the front and back of same stitch.

Sl – slip stitch

Pssso – pass slipped stitch over last worked stitch.

CO – cast on

PU – Pick Up

St(s) – stitch(es)

BOR – Beginning of round

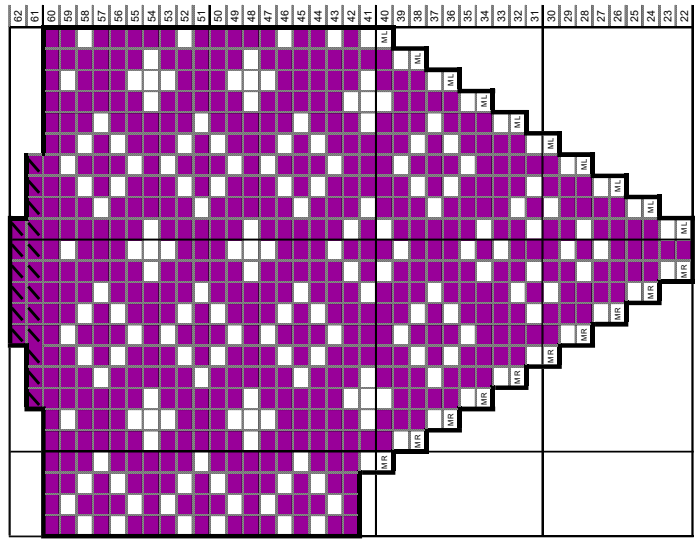
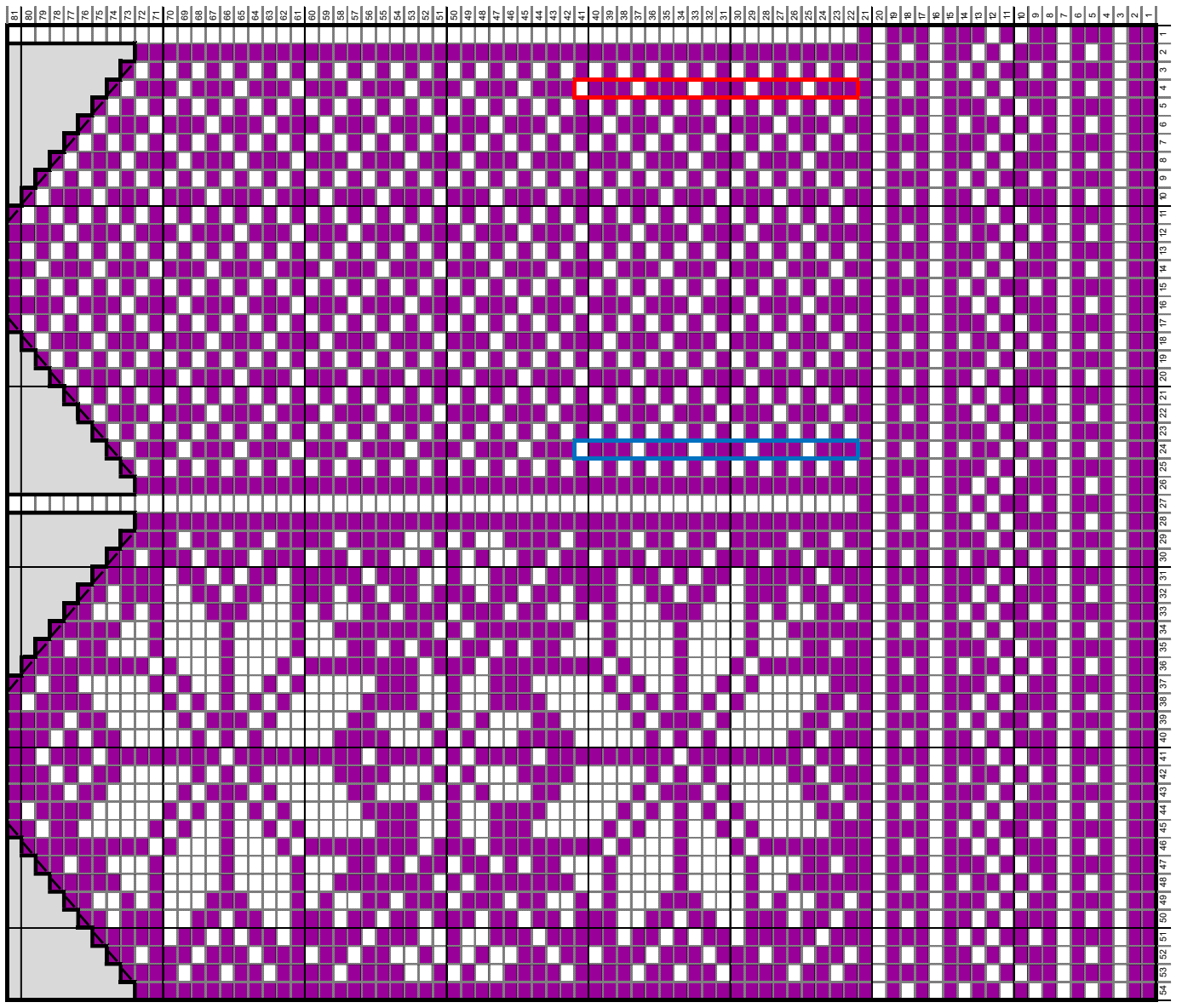
pm – place marker

sm – slip marker

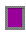







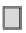
Rnd – round

MC – main colour

CC – contrast colour



Thumb Chart

-  Knit MC
-  Knit CC
-  Replace this stitch with same line from Thumb Chart (Right Hand Only)
-  Replace this stitch with same line from Thumb Chart (Left Hand Only)
-  K2tog
-  SSK
-  Make 1 stitch (right leaning)
-  Make 1 stitch (left leaning)
-  No Stitch