



# Ferguson

A classic toque with a folded brim and a traditional Fair-Isle motif.

This pattern is for one size, approximately 20-21" finished, which will fit most adult heads. The size can be further adjusted by going up or down a needle size, or by a firm wet-blocking when finished.

**Yarn:** Dawn Orchid BFL Fingering (100% Bluefaced Leicester wool)

**MC:** 1 skein BFL Fingering 115 (413yds/377m)

**CC1:** 1 skein BFL Fingering 25 (90yds/82m)

**CC2:** 1 skein BFL Fingering 25 (90yds/82m)

*We suggest that CC1 should be a lighter or darker version of MC, while CC2 should contrast distinctly with both.*

**Needles:** 2.75mm (US2) 16" circular needles;  
3.0mm (US2.5) 16" circular and DPN/Magic Loop;  
3.25mm (US3) 16"/40cm circular needles;  
*or size needed to obtain gauge.*

**Gauge:** 28sts & 36 rows = 4"/10cm on 3.0mm (US2.5) needles in plain stockinette.

**Other Tools & Notions:** darning needle, stitch marker

## BRIM

Using smallest needles, CO 144 sts with MC. Join in round, being careful not to twist. Place marker at BOR.

(K2 P2) around. Continue until work measures 14cm/5½" from cast on edge.

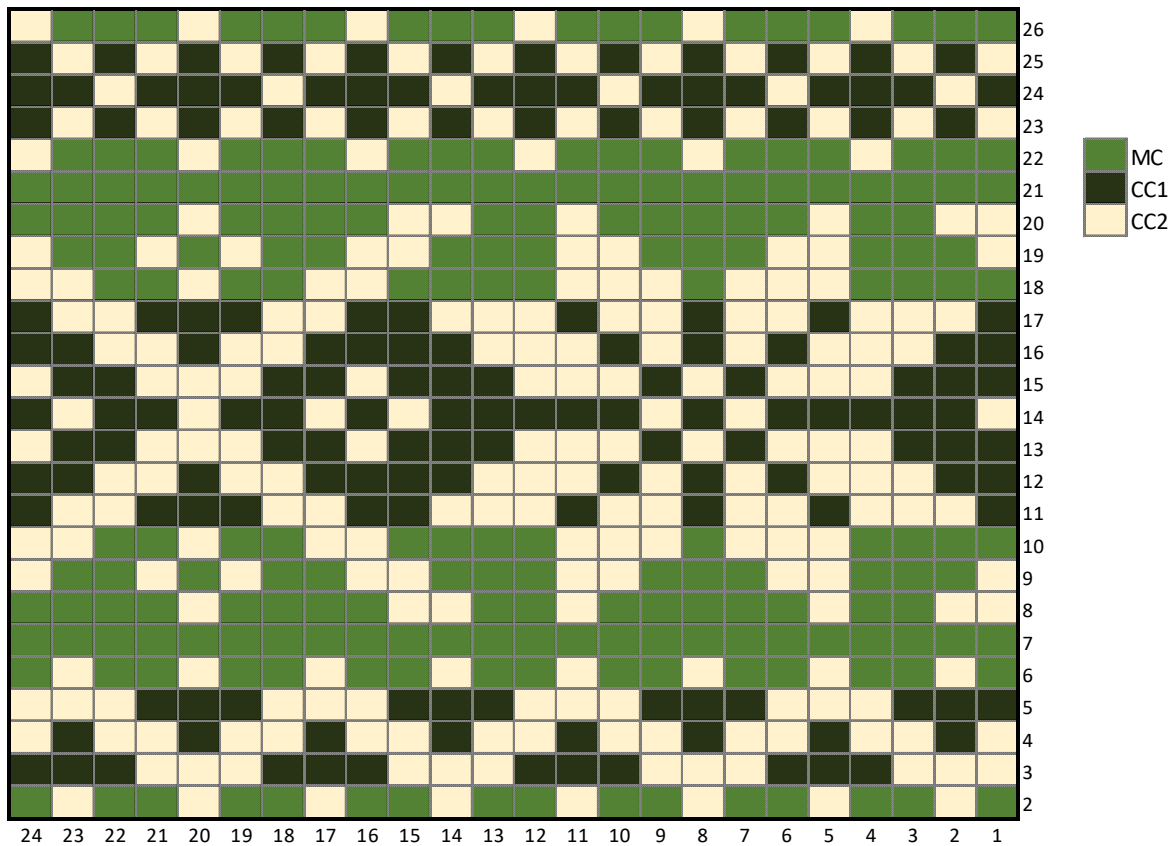
## MAIN SECTION

Change to middle needle sized needles and K 2 rounds.

Change to largest needles for fair-isle section. Join CC1 and work chart below, starting with Row 1 and working from right to left. Chart repeats six times per round.

Join CC2 at round 2.

Once round 25 is completed, switch back to middle sized needles, and K for 1.5" with just MC.



## CROWN

Round 1: \*K10, K2tog, rep from \* to end of rnd. (132 sts)

Rounds 2, 4, 6, 8, 10, 12: K all sts.

Round 3: \*K9, K2tog, rep from \* to end of rnd. (120 sts)

Round 5: \*K8, K2tog, rep from \* to end of rnd. (108 sts)

Round 7: \*K7, K2tog, rep from \* to end of rnd. (96sts)

Round 9: \*K6, K2tog, rep from \* to end of rnd. (84sts)

Round 11: \*K5, K2tog, rep from \* to end of rnd. (72 sts)

Round 13: \*K4, K2tog, rep from \* to end of rnd. (60sts)

Round 14: \*K3, K2tog, rep from \* to end of rnd. (48sts)

Round 15: \*K2, K2tog, rep from \* to end of rnd. (36sts)

Round 16: \*K1, K2tog, rep from \* to end of rnd. (24 sts)

Round 17 & 18: K2tog around. (6 sts).

Break yarn, pull through remaining sts and pull tight.

Weave in all ends and block.

### Abbreviations:

K – knit

P – purl

K2tog – knit 2 together

CO – cast on

St(s) – stitch(es)

BOR – Beginning of round

Rnd – round

MC – main colour

CC – contrast colour