

FOR
MUSIC
LOVERS
BY
MUSIC
LOVERS

CLARITY



cla·ri·ty

noun [u]

'The quality of being easy to see or hear; sharpness of image or sound.'

But isn't it more than that? Clarity is the reason why we are here; to enjoy a dissociation through closeness to reality. We sometimes call that 'fidelity'.

It is the age-old mission of raising hairs, dilating pupils, having breath taken away from you.

What is inside this box is so special.

It is not an audio system; it is a subscription to endless cool, reminiscent summer evenings with your favourite tipple, the life & centre of the 'party-at-yours' with friends and family, and the first day of the rest of your time to enjoy music.

It has had the utmost skill, care, love and attention-to-detail put into its fruition, for you. Treasure it, enjoy it, live it.

Welcome to the MasterSounds family.

Important safety instructions.

READ THESE INSTRUCTIONS FIRST

Read and retain these instructions for future reference. Adhere to all warnings printed here and on Clarity products.

COVERS

Do not remove any cover or unscrew any parts of Clarity A. Refer servicing work to MasterSounds or authorised personnel only.

INSTALLATION

Install Clarity A in accordance with the instructions printed in this user guide. Use audio connectors and plugs only for their intended purpose.

VENTILATION

Ensure adequate ventilation around all areas of Clarity A. Do not position the unit where any airflow required for ventilation is impeded.

MAINS POWER

Connect the rear of Sub:8 to a mains power supply only of the IEC C13 type supplied with Clarity A. The power source must provide a good ground connection. Do not remove or tamper with the ground connection in the power cord. Use the power cord with a sealed mains plug appropriate for your local mains supply as provided with the console. Route the power cord so that it is not likely to be walked on, stretched or pinched by items placed upon or against it. Replace any fuse with those of the same type and rating.

MOISTURE

To reduce the risk of fire or electric shock do not expose any of the equipment to rain or moisture or use it in damp or wet conditions. Do not place containers of liquids on any parts of the Clarity A system, which might spill into any openings.

SUB:8 PROTECT/CLIP LED

On the rear of Sub:8 you will see a LED light labelled 'RED-PROTECT / GREEN-CLIP'. This is a protection feature for the power module and may illuminate if your audio source is outputting too much signal. If this happens please ensure the master volume on your audio source is reduced.

ENVIRONMENT

Locate the units away from direct sunlight and any equipment which produces heat, such as power supplies or heaters. Protect from excessive dirt, dust, heat and vibration when operating and storing. Avoid tobacco ash, drinks spillage and smoke, especially that associated with smoke machines.

HANDLING

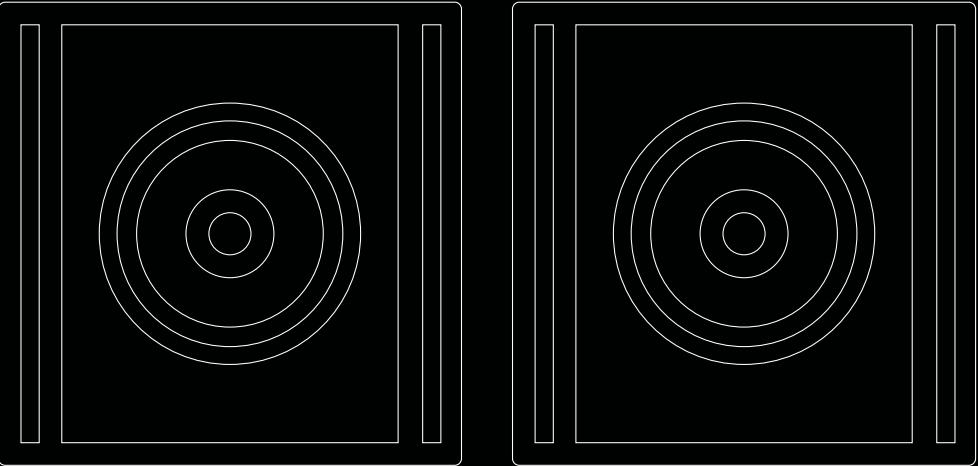
To prevent damage to the controls and cosmetics avoid placing heavy objects on the console surfaces, scratching the surface with sharp objects, or rough handling and vibration. Protect the controls from damage during transit. Use the original packaging if you need to ship the unit. Failure to keep and/or utilise the original packaging when shipping the unit will void your warranty.

What's in the box.



CUBE:6 LOUDSPEAKER

Here's our wonderful Cube:6 loudspeaker, part of the triptych that makes our new Clarity A multi-application high fidelity speaker system. The compact Cube:6 loudspeaker is fitted with a custom 6" full range, point source driver, delivering open, transparent and clear sound. The design ethos behind Clarity A is simplicity, versatility and flexibility, offering a beautifully open and natural soundstage in a compact and visually attractive package.



POWER CABLE

Your power cable is supplied in the box, ready to plug and play in your country.

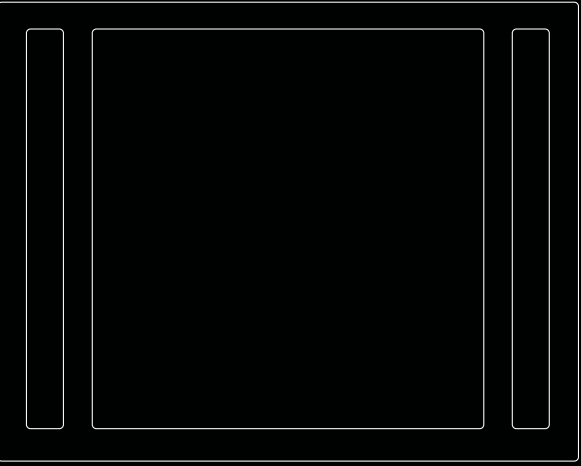
SPEAKER CABLES

Clarity A includes a pair of high-quality inter-connecting SpeakON™ speaker cables that connect the Sub:8 subwoofer to the two Cube:6 loudspeakers. We supply our speaker cables in 3-metre pairs as standard.



SUB:8 SUBWOOFER

Sub:8 features a custom carbon fibre 8" dual-voice-coil driver, and exclusive bandpass design, allowing flexible room placement and powerful extended output, producing natural, musical and ultra-controlled bass.



DRAWSTRING BAGS

Your Clarity A comes packed in white, locally sourced, organic supima cotton, protective bags with waxed drawstring ties, made in Leicester, UK.



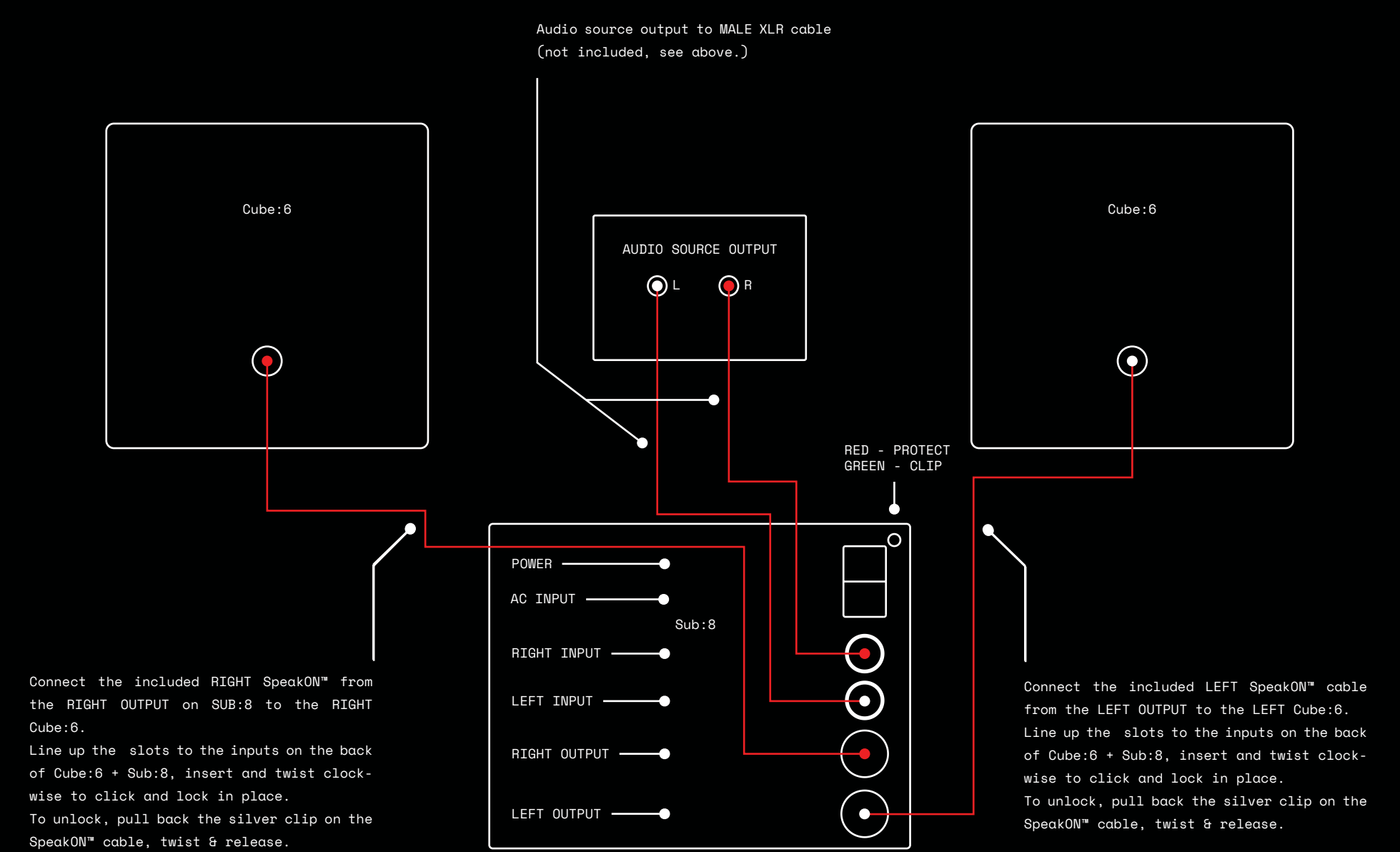
Connection & Setup. *(i)*

AUDIO SOURCE CABLES.

To connect your Clarity A to your audio source* be sure to check you have the correct cables. The inputs on the back of Sub:8 require 2x MALE XLR inputs, so when choosing your cables, please ensure that they have MALE XLR inputs for Clarity A.

If your audio source* does not feature a balanced output, Clarity A can still accept unbalanced audio, however, a MALE XLR connector is still required to connect to the rear of Sub:8.

SETUP GUIDE. *(Rear View)*



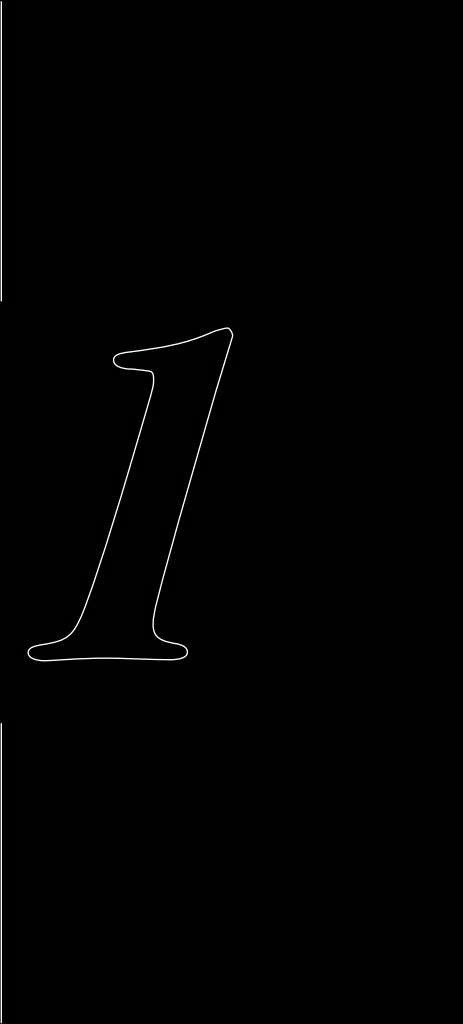
*
'audio source' = e.g. DJ Mixer, Hi-Fi Pre-Amplifier, DAC (Digital Analogue Converter) or Digital Streaming Device.

Connection & Setup. *(ii)*

When powering Clarity A on and off it's of prime importance that the following mantra is observed and strictly adhered to. Improper switching will damage your audio devices and will void your Clarity A warranty.

POWER ON

Make sure all levels/volume are turned down to ZERO/OFF on your audio source prior to powering on any equipment.



Turn down the volume on your audio source to ZERO/OFF.

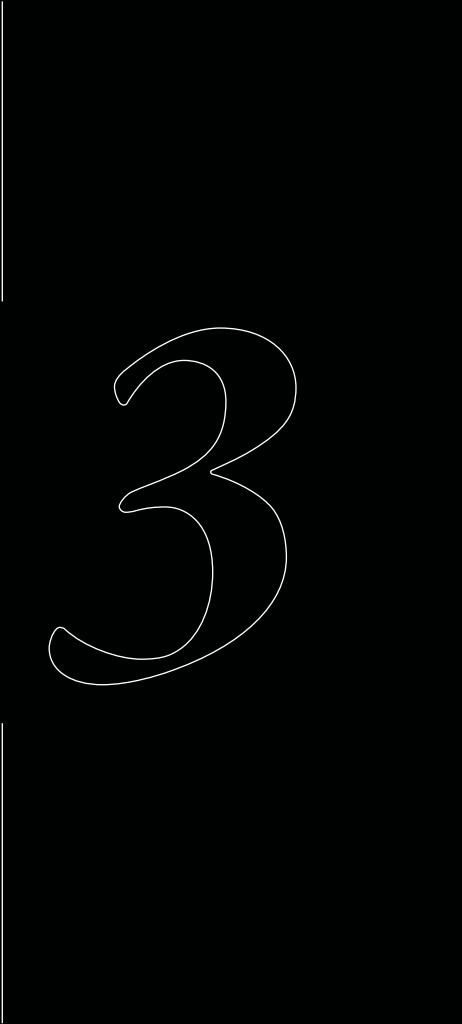
POWER OFF

Power on your audio source & any other associated equipment.



Power off Clarity A via the power switch on the rear of Sub:8.

Power on Clarity A via the power switch on the rear of Sub:8.



Then, turn off your audio source and any associated equipment.

Technical Specification. *(i)*

FULL RANGE CUBE:6 / SUB:8 SYSTEM:

1 X SUB:8 STEREO SUBWOOFER WITH INTEGRAL CROSSOVER
2 X CUBE:6 SATELLITE SPEAKERS WITH INTEGRAL CROSSOVER

FREQUENCY RESPONSE

30Hz - 22kHz

CUBE:6 / SUB:8 CROSSOVER FREQUENCY

80Hz

(CRITICALLY DAMPED 3RD ORDER
ELECTRO-ACOUSTIC SLOPES)

SYSTEM SENSITIIVITY

89dB / 1 watt

SYSTEM POWER HANDLING

2x200 watts

SYSTEM NOMINAL IMPEDANCE

4 Ohms

Technical Specification. *(ii)*

CUBE:6

FULL RANGE, 15 LTR, TWO-WAY, LINE LOADED BASS REFLEX SYSTEM

SUB:8

OPTIMUM Q 4TH ORDER BANDPASS SUBWOOFER

6 INCH / TWEETER - 1 INCH SOFT DOME COAXIAL DRIVER HIGH POWER DUAL VOICE COIL CARBON FIBRE 8 INCH LONG THROW.
5KHZ CROSSOVER

89DB / 1 WATT SENSITIVITY 92DB (PASSBAND SENSITIVITY MEASURED INTO EIGHTH
SPACE Π/2 STERADIANS)

65HZ - 22KHZ +- 3DB FREQUENCY RESPONSE 25Hz - 150Hz

200 WATTS (UNCLIPPED) POWER HANDLING 200 WATTS (UNCLIPPED)

4 OHMS NOMINAL IMPEDANCE 8 OHMS

L=300 W=290 H=290 - WEIGHT=7.35 KG DIMENSIONS (METRIC) L=490 W=360 H=280 / WEIGHT=18.6KG

L=12" W=11.5" H=11.5" - WEIGHT=16 LBS DIMENSIONS (IMPERIAL) L=19" W=14" H=11" / WEIGHT=40LBS

Warranty.

24-MONTH WARRANTY

MasterSounds warrants that all parts of Clarity A shall be free of defects in workmanship and materials for a period of 24 months from the date of delivery. In the event that the product fails to operate as intended, MasterSounds will repair or replace the product subject to the following conditions.

1

That the failure was not due to improper installation, operation, cleaning or maintenance, accident, damage, misuse, abuse, or non-approved modifications to any parts of Clarity A.

2

The warranty does not cover normal wear and tear or any other event, act, default or omission outside MasterSounds control.

3

Faulty products must be returned to MasterSounds or an authorised service agent along with the original invoice or proof of purchase, and the product must be returned packed in the original shipping box and inner packaging. Please contact MasterSounds before shipping a faulty unit.

4

The warranty applies only to the original purchaser and is not transferrable.

5

At their sole discretion, MasterSounds may either repair the defective product or replace it with an equivalent service exchange item.

6

This warranty constitutes the purchaser's sole remedy. MasterSounds shall not be liable for any other repair or replacement cost or any damage or loss directly or indirectly related to the malfunction of the Clarity A.

CON-TACT

For more information please contact us via:

WWW.MASTERSOUNDS.CO.UK

FOR MUSIC LOVERS, BY MUSIC LOVERS.

Master Sounds