

05-18 DODGE CHRYSLER

CHALLENGER CHARGER 300 MAGNUM

CORSA[®]
PERFORMANCE



IMPORTANT! WARRANTY AND INSTALLATION INSTRUCTIONS

Please Forward All Information to Consumer

Be sure to review the enclosed instructions prior to beginning the installation process. If you have any questions about the enclosed parts or instructions, or if you encounter a problem during installation:

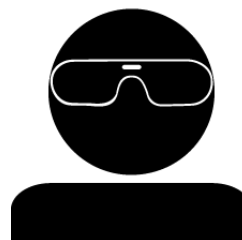
CALL TECHNICAL SUPPORT: 440.891.0999 or 800.486.0999

**TO ACTIVATE YOUR WARRANTY GO TO:
CORSAPERFORMANCE.COM/WARRANTY**

COLOR INSTRUCTIONS ARE AVAILABLE BY PART NUMBER ON: CORSAPERFORMANCE.COM



NEVER work on a hot exhaust system.
Allow time for the vehicle to cool.



Always wear eye protection
when working under a vehicle.

INSTALL DIFFICULTY 

RECOMMENDED TOOLS & SUPPLIES

- 3/8" Drive Ratchet
- 3/8" Drive Torque Wrench
- 3/8" Drive Metric Normal & Deep Socket Sets
- 3/8" Ratchet Extensions (3", 6", 12")
- O2 Sensor Socket or 22mm Wrench
- Metric Box & Open End Wrench Set

2005-2018 CHALLENGER CHARGER 300 MAGNUM

LT Headers: RT 1.75" Primary, SRT 1.875" Primary, 3.0" Collector

Part #: RT 16008, 16108, SRT 16009, 16109



Please take time to read and understand these installation instructions.

CORSA recommends that the installation of this system be performed by a qualified service center or professional installer who has; experience installing off-road products, the necessary equipment, tools, and experienced personnel. In order to increase the vehicle's performance this system was engineered differently from the vehicle's stock headers. Take particular care to ensure proper clearance of all lines, hoses, and cables.

WARNING: Do not allow anything to touch or be in close proximity to this system. Never work on a hot exhaust system. Allow time for the vehicle to cool. Always wear eye protection when working under a vehicle.

CORSA Performance makes no representation or warranty, expressed or implied that its downpipe or header products and or components there-in comply with federal, state or local emission levels, noise levels, labeling laws, safety standards, or that any of their parts conform with the racing vehicles exemption, unless otherwise noted. The purchaser assumes all responsibility for such use and compliance.

This warranty does not extend to damaged or defect in the finish of a product or to any product, that in the opinion of CORSA Performance, has been misused, damaged by accident or negligence, altered or modified in any way, faulty installation or installed contrary to CORSA installation instructions, or repaired by an unauthorized service facility.

Full warranty available on www.corsaperformance.com

WARNING: CORSA Performance Headers are intended for off-road use only. Products are not legal for sale or use in the state of California, or in states that adopt California Air Resources Board emission standards.

NOTE: This instruction sheet assumes that a CORSA Performance Cat-Back and CORSA Exhaust Connection Pipes (CORSA Part # 16020 or 16023) are installed in conjunction with the CORSA Long Tube Headers. May fit to other systems with modifications.

NOTE: Individual vehicle variations and stock header differences can impact the order of installation. The directions provided will assist in removal and CORSA installation. Please contact a CORSA representative with any concerns.

Please confirm that all parts are present according to the bill of materials before beginning the installation.

If something is missing call Tech Support at 440.891.099 or Toll Free: 1.800.486.0999

[BILL OF MATERIALS LOCATED ON NEXT PAGE]

2005-2018 CHALLENGER CHARGER 300 MAGNUM

LT Headers: RT 1.75" Primary, SRT 1.875" Primary, 3.0" Collector

Part #: RT 16008, 16108, SRT 16009, 16109



RT HEADER BILL OF MATERIALS

PART # 16008 (2005-2018)

Long Tube Header (<i>Driver</i>)	1	Long Tube Header (<i>Passenger</i>)	1
Driver Header Gasket	1	Passenger Header Gasket	1
Dipstick Tube Spacers	3	O2 Sensor Extension (<i>Front</i>)	2
Header Bolts	16	Graphite Donut 3.0" Gaskets Kit 8 Top Lock Hex Nuts (5/16" x 18) 8 Allen Head Cap Screws (5/16" x 18 x 1 3/4")	

RT CONNECTION PIPES BILL OF MATERIALS

PART # 16023



Connection Pipe (*Driver QTY 1, Passenger QTY 1*)
Flare Connection Assembly with O2 (*QTY 2*)

Hardware Kit:

- O2 Block Off Bolts (*QTY 2*)
- O2 Extension Cables (*Rear QTY 1*)

RT HEADERS + CONNECTION PIPES

PART # 16108



Item 1: Long Tube Catless Headers Part Number: 16008

Item 2: CORSA Connection Pipes Part Number: 16023

2005-2018 CHALLENGER CHARGER 300 MAGNUM

LT Headers: RT 1.75" Primary, SRT 1.875" Primary, 3.0" Collector

Part #: RT 16008, 16108, SRT 16009, 16109



SRT HEADER BILL OF MATERIALS

PART # 16009 (2005-2018)

Long Tube Header (<i>Driver</i>)	1	Long Tube Header (<i>Passenger</i>)	1
Driver Header Gasket	1	Passenger Header Gasket	1
Dipstick Tube Spacers	3	O2 Sensor Extension (<i>Front</i>)	2
Header Bolts	16	Graphite Donut 3.0" Gaskets Kit 8 Top Lock Hex Nuts (5/16" x 18) 8 Allen Head Cap Screws (5/16" x 18 x 1 3/4")	

SRT CONNECTION PIPES BILL OF MATERIALS

PART # 16020



Connection Pipe (*Driver QTY 1, Passenger QTY 1*)
Flare Connection Assembly with O2 (*QTY 2*)

Hardware Kit:

- O2 Block Off Bolts (*QTY 2*)
- O2 Extension Cables (*Rear QTY 1*)

SRT HEADERS + CONNECTION PIPES

PART # 16109



Item 1: Long Tube Catless Headers Part Number: 16009

Item 2: CORSA Connection Pipes Part Number: 16020

2005-2018 CHALLENGER CHARGER 300 MAGNUM

LT Headers: RT 1.75" Primary, SRT 1.875" Primary, 3.0" Collector

Part #: RT 16008, 16108, SRT 16009, 16109

CORSA[®]
PERFORMANCE

NOTE: This system was designed to connect to CORSA Cat-Backs, and CORSA Connection Pipes Part # 16020 or 16023. Tip color does not affect fitment. The need for additional modification and fabrication may arise. The vehicle owner assumes all responsibility for subsequent fitment issues.

CAUTION: Never work on a hot exhaust system. Allow the vehicle to cool for at least an hour and a half. Always wear eye protection when working under a vehicle. It is recommended to use cotton gloves in order to protect the stainless steel surface of the header from permanent grease and oil stains.

NOTE: Lift the vehicle using a hydraulic lift or jack and jack stands. A lift is strongly recommended because three (3) feet or more is needed to install the driver side header from the underside.

REMOVAL INSTRUCTIONS

FACTORY MANIFOLD



1. Lift the rear floor mat and the false floor up into the stowed position to allow access to the spare tire and battery compartment. Using a 10mm socket, disconnect the negative battery cable.

WARNING: Do not close the trunk after you disconnect the battery cable as you will not be able to access the trunk.



2. Remove the engine cover.



Unplug the air intake MAF sensor. Remove the factory bolt using an 8mm socket and ratchet.



3. Disconnect the air intake vacuum tube and remove the factory air intake from the vehicle.



4. Unbolt the coolant reservoir using a 10mm socket and ratchet to allow easier access to the factory manifold bolts. Save bolt for **Install Step 22**. Lift and safely secure the vehicle.

Continued on Next Page ...

REMOVAL INSTRUCTIONS

FACTORY MANIFOLD



5. Unplug the driver and passenger rear O2 sensors from the connectors.



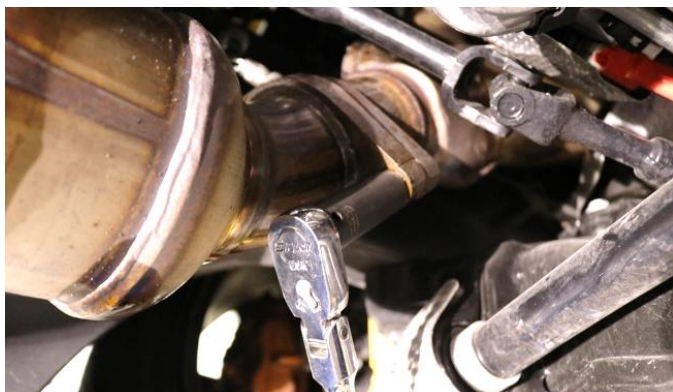
6. Remove the rear O2 sensors and label their positions using a 22mm wrench or O2 sensor socket and 3/8" ratchet. Save them for **Install Step 22**. **PRO TIP:** Label on the connector or the sensor body itself. **EXAMPLE:** DR for Driver Rear or PF for Passenger Front.



7. Remove the bottom plastic engine cover using a 10mm socket and ratchet.



8. Using a 15mm socket, loosen the two nuts on the factory X-Pipe inlet.



9. Using a 16mm socket and ratchet or wrench, remove the two nuts on the driver side catalytic converter flange. Repeat on passenger side.

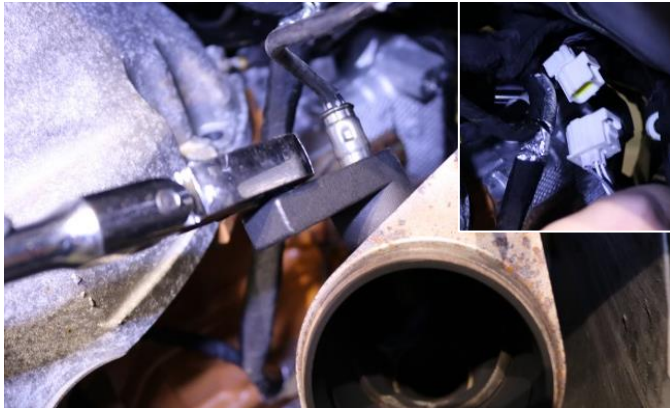


10. Push the entire exhaust rearward in the vehicle to release the catalytic converters from the stock manifolds. Remove catalytic converters from vehicle.

Continued on Next Page ...

REMOVAL INSTRUCTIONS

FACTORY MANIFOLD



11. Unplug the front O2 sensor connectors. Remove the O2 sensors from the factory manifolds using a 22mm wrench or O2 sensor socket and 3/8" ratchet. Save for **Install Step 4 & 11**. **PRO TIP:** Label each one appropriately for reinstallation.



12. Mark the alignment of the steering shaft, located on the driver side of the vehicle. Remove the steering shaft bolt using a 10mm socket and ratchet. Save bolt for **Install Step 10**. Separate shaft and move out of the way. Do **NOT** turn or rotate the shaft while disconnected.



13. Remove the 8mm bolt on the starter's heat shield using an 8mm socket and ratchet. Save for **Install Step 5**.



14. Remove the remaining 2 bolts on the starter's heat shield using a 13mm socket. Save heat shield and 3 bolts for **Install Step 5**.



15. Unbolt the red (positive) cable on starter using a 12mm wrench.

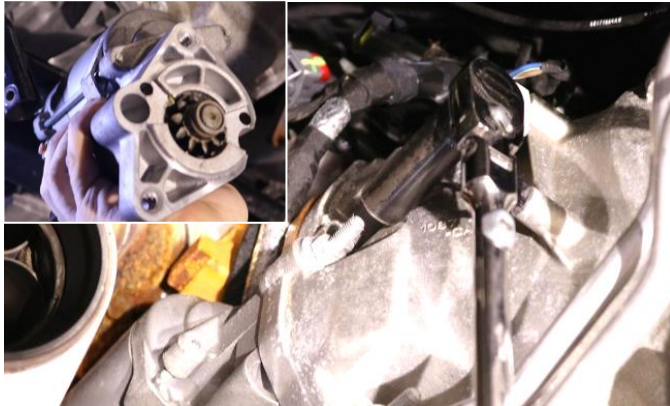


16. Unplug the wiring harness from the starter.

Continued on Next Page ...

REMOVAL INSTRUCTIONS

FACTORY MANIFOLD



17. Unbolt and remove the starter using a 15mm socket and ratchet. Save bolts for **Install Step 5.**



18. Remove the knock sensor from the driver side of engine block using a 13mm socket and ratchet.



19. Remove the upper and lower driver side factory manifold bolts using a 10mm socket or wrench. Remove driver factory manifold from vehicle. **PRO TIP:** Remove middle two upper bolts first for easier access. It may be easier to access some of the manifold bolts from engine bay instead of underneath the vehicle.



20. Remove heat shield from the passenger side knock sensor. Unbolt the passenger side knock sensor using a 13mm socket. Remove the top forward-most passenger side factory manifold bolt using a 10mm socket or wrench to gain access to and remove the oil dipstick and tube. **WARNING: DO NOT lose the o-ring that seals the tube to the block.** Loosen and remove all remaining passenger side factory manifold bolts using 10mm socket or wrench. Remove the passenger side factory manifold from vehicle.

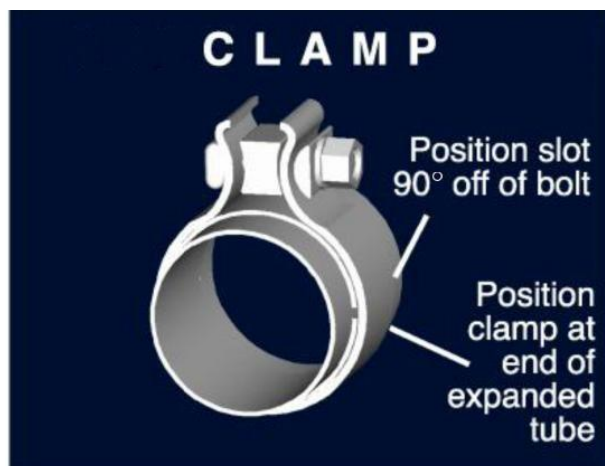
This concludes the removal of the factory exhaust manifolds.

WARNING! DO NOT SKIP THIS STEP!

Apply the anti-seize lubricant (*supplied*) to the threads **ONLY** of all the clamps and flange bolts. Failure to follow this procedure can cause nuts to seize on clamps and potentially destroy threads.

After applying anti-seize lubricant, be sure to **thoroughly** clean your hands, as lubricant will tarnish stainless steel.

All clamps should be tightened using a properly calibrated Torque Wrench. Using an air impact gun will damage the clamp and reduce its ability to effectively seal the joint. It may also cause the joint to separate, thereby causing damage to your exhaust system and to your vehicle.



NOTE: Align all clamps so that the center of the clamp bolt is 90 degrees from the notch in the pipe.

WARNING: CORSA Performance Headers are intended for off-road use only. Products are not legal for sale or use in the state of California, or in states that adopt California Air Resources Board emission standards.

NOTE: This instruction sheet assumes that a CORSA Performance Cat-Back and CORSA Exhaust Connection Pipes (CORSA Part # 16020 or 16023) are installed in conjunction with the CORSA Long Tube Headers. May fit to other systems with modifications.

CORSA's warranty does not extend to damage or defect in the finish of a product or to any product that in the opinion of CORSA Performance, has been misused, damaged by accident or negligence, **altered** or **modified** in any way, faulty installation or installed contrary to CORSA Performance installation instructions, or repaired by an unauthorized service facility. Full warranty available on www.corsaperformance.com

NOTE: Individual vehicle variations and stock header differences can impact the order of installation. The directions provided will assist in removal and CORSA installation. Please contact a CORSA representative with any concerns.

NOTE: This system was designed to connect to CORSA Cat-Backs, and CORSA Connection Pipes Part # 16020 or 16023. Tip color does not affect fitment. The need for additional modification and fabrication may arise. The vehicle owner assumes all responsibility for subsequent fitment issues.

CAUTION: Never work on a hot exhaust system. Allow the vehicle to cool for at least an hour and a half. Always wear eye protection when working under a vehicle. It is recommended to use cotton gloves in order to protect the stainless steel surface of the header from permanent grease and oil stains.

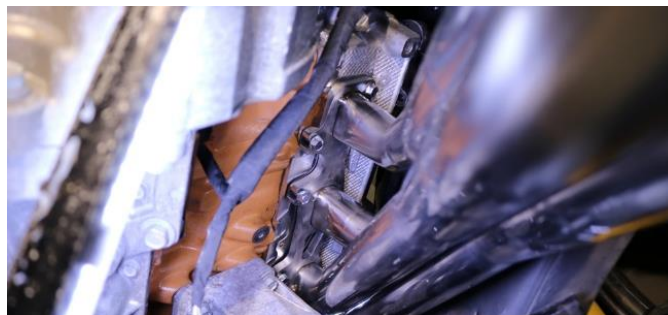
NOTE: Lift the vehicle using a hydraulic lift or jack and jack stands. A lift is strongly recommended because three (3) feet or more is needed to install the driver side header from the underside.

INSTALLATION INSTRUCTIONS

CORSA EXHAUST



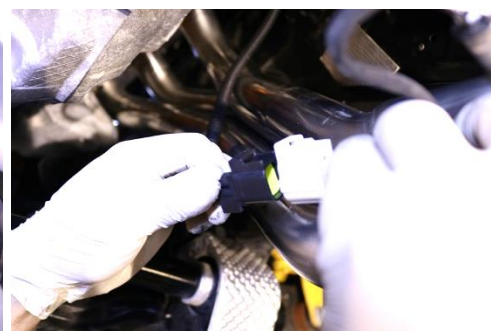
1. Prepare 8 of the supplied header bolts by applying a small amount of anti-seize to each. Insert 4 of the bolts through the lower holes in the provided OEM style stainless steel gasket. **WARNING:** Hand start each bolt to prevent cross threading. **5.7L Vehicles ONLY NOTE:** Driver and passenger gaskets are different. Passenger side has an extra hole for a tube on the front primary. Ensure the gasket is used on the proper engine side!



2. Lift the passenger side CORSA header onto the 4 bottom bolts. Start the rest of the header bolts by hand and then torque to approximately 20FT LBS. **Note:** Gradually tighten all bolts because clearances are tight. Some bolts if left loose and not tightened gradually may contact header primaries if other bolts are fully tightened at the start.



3. Reinstall the knock sensor to the passenger side engine block using a 13mm socket and ratchet. Reinstall the heat shield from **Removal Step 20**.



4. Insert the passenger front O2 sensor and tighten using an O2 socket or 22mm wrench. Install the supplied O2 extension cable into the front O2 wiring connector and connect the two together.

Continued on Next Page ...

INSTALLATION INSTRUCTIONS

CORSA EXHAUST



- 5.** Reinstall the starter using a 15mm socket and the bolts from **Removal Step 17**. Reinstall the heatshield from **Removal Step 14** using the 8mm socket and ratchet.



- 6.** Prepare the remaining header bolts by applying a small amount of anti-seize to each of them. Insert 4 of the bolts through the lower holes in the provided OEM style stainless steel gasket as shown. **WARNING:** Hand start each bolt to prevent cross threading during installation.



- 7.** Lift the driver side CORSA header onto the 4 bottom bolts. Start the rest of the header bolts by hand and then torque to approximately 20FT LBS. **Note:** Gradually tighten all bolts because clearances are tight. Some bolts if left loose and not tightened gradually may contact header primaries if other bolts are fully tightened at the start.



- 8.** Reinstall the knock sensor to the driver side engine block using a 13mm socket and ratchet. Reinstall the heat shield from **Removal Step 18**.



- 9.** Attach the positive cable to the starter using a 12mm wrench. Plug in the wiring harness to the starter.

Continued on Next Page ...

INSTALLATION INSTRUCTIONS

CORSA EXHAUST



- 10.** Attach the steering shaft using a 10mm socket and bolt from **Removal Step 12**. **WARNING:** Pay attention to the marked alignment of the steering shaft.



- 11.** Insert the driver side front O2 sensor and tighten using an O2 socket or 22mm wrench. Install the supplied O2 extension cable into the front O2 wiring connector. Connect the O2 wiring harness and O2 extension.



- 12.** Tuck away the O2 sensor and extension wires using supplied zip ties and/or vehicle heat shielding. **WARNING:** DO NOT allow wires to contact the headers or other exhaust components.



- 13.** Reinstall plastic bottom engine cover using a 10mm socket and ratchet.

Continued on Next Page ...

INSTALLATION INSTRUCTIONS

CORSA EXHAUST



- 14.** Install the supplied donut gaskets (99HK7000) to the outlet of the header collector.



- 15.** Slide outlet end of bent connection pipes (18LC4040 and 18LC4041) into the inlets of X-pipe.



- 16.** Add supplied clamp and flange adapter (20MU4171) to inlet of bent connection pipes (18LC4040 and 18LC4041). Rotate upwards until even with donut gasket.



- 17.** Install supplied hardware kit bolts and nuts and torque 15 ft-lbs using a torque wrench.

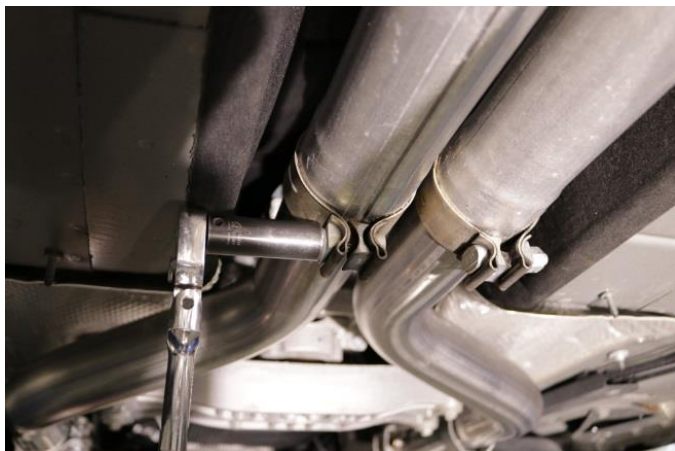


- 18.** Tighten supplied clamps to 45 ft-lbs using a 15mm socket and torque wrench.

Continued on Next Page ...

INSTALLATION INSTRUCTIONS

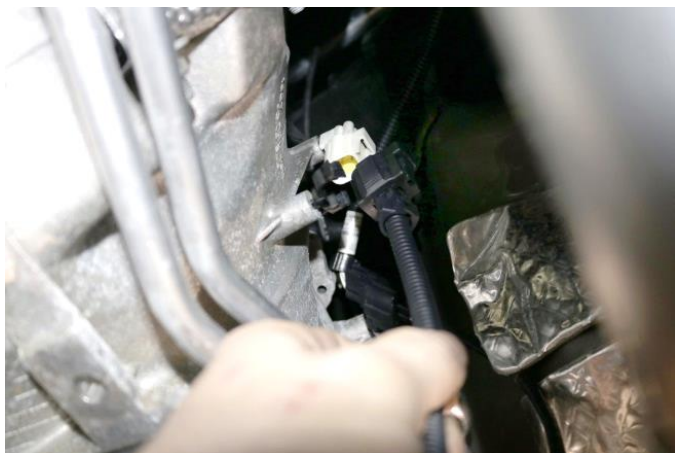
CORSA EXHAUST



19. Tighten the inlet of the X-pipe clamps to factory specifications.



20. Insert and tighten both driver and passenger rear O2 sensor using an O2 sensor socket and ratchet or 22mm wrench. **WARNING:** Pay attention to your labels.



21. Locate the supplied zip ties and supplied driver rear O2 extension cable. Plug the O2 extension into the driver O2 harness and the other end into the O2 sensor. Tuck away any slack from any hot or moving parts.

Plug passenger side rear O2 sensor into factory O2 harness.



22. Reinstall coolant reservoir, air box, and engine cover. Reconnect the black battery cable.

Continued on Next Page ...

NOTE: Immediately following the installation of your exhaust system, you may experience a trace of smoke after initial start-up. DO NOT be alarmed. The smoke is caused by the burning of a small amount of forming oil residue used in the manufacturing process.

NOTE: It is strongly suggested that all clamps be checked and tightened after road testing the vehicle once the system has cooled.