



2024+ Ford  
Mustang GT 5.0L Active



## IMPORTANT! WARRANTY AND INSTALLATION INSTRUCTIONS

*Please Forward All Information to Consumer*

Be sure to review the enclosed instructions prior to beginning the installation process. If you have any questions about the enclosed parts or instructions, or if you encounter a problem during installation:

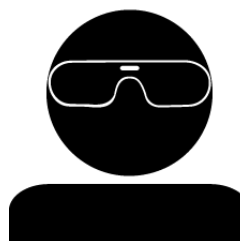
**CALL TECHNICAL SUPPORT: 440.891.0999 or 800.486.0999**

**TO ACTIVATE YOUR WARRANTY GO TO:  
[CORSAPERFORMANCE.COM/WARRANTY](https://www.corsaperformance.com/warranty)**

**COLOR INSTRUCTIONS ARE AVAILABLE BY PART NUMBER ON: [CORSAPERFORMANCE.COM](https://www.corsaperformance.com)**



**NEVER work on a hot exhaust system.**  
Allow time for the vehicle to cool.



**Always wear eye protection  
when working under a vehicle.**

### INSTALL DIFFICULTY



### RECOMMENDED TOOLS & SUPPLIES

- 3/8" Drive Ratchet
- 3/8" Drive Torque Wrench
- 3/8" Drive 13mm Socket
- 3/8" Drive 15mm Deep Socket
- 1/4" Ratchet
- 1/4" Drive 7mm Socket
- 1/4" Drive 10mm Socket
- 1/4" Drive 11mm Socket
- Tape Measure, Marker, & Masking Tape
- Saw or Chain-Style Pipe Cutter
- File or Sanding Device for De-Burring
- Grommet Pullers
- Soap and Water Solution
- Torque Wrench
- Penetrating Lubricant Spray
- Push Clip Tool/Flat Head Screwdriver

# 2024+ FORD MUSTANG GT 5.0L V8

3.0" Active Axle-Back - Dual Rear Exit w/ Twin 4.0" Tips

Part #: 21261, 21262 (Incl. BLK)



## Please take time to read and understand these installation instructions.

CORSA recommends that the installation of this system be performed by a qualified service center or professional installer who has the necessary equipment, tools, and experienced personnel. However, if you decide to perform this installation yourself, the use of an additional person may be required.

**WARNING:** Never work on a hot exhaust system. Allow time for the vehicle to cool. Always wear eye protection when working under a vehicle.

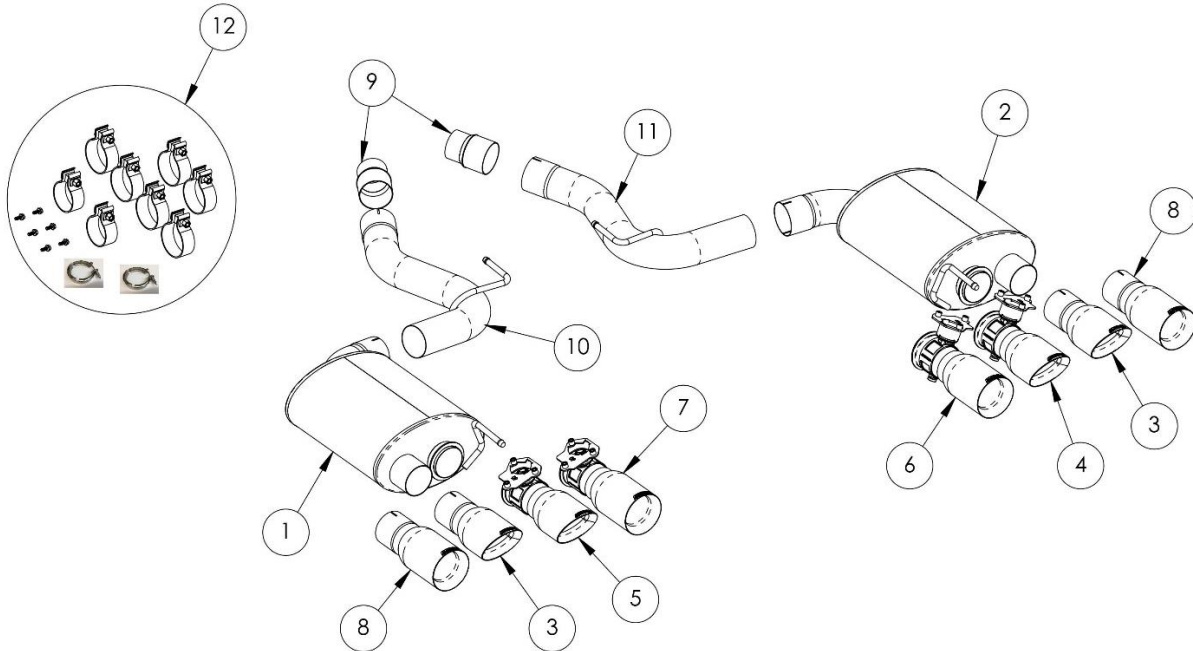
CORSA Performance makes no representation or warranty, expressed or implied that its downpipe or header products and or components there-in comply with federal, state or local emission levels, noise levels, or safety standards or that any of their parts conform with the racing vehicles exemption, unless otherwise noted. The purchaser assumes all responsibility for such use and compliance.

This warranty does not extend to damaged or defect in the finish of a product or to any product, that in the opinion of CORSA Performance, has been misused, damaged by accident or negligence, altered or modified in any way, faulty installation or installed contrary to CORSA installation instructions, or repaired by an unauthorized service facility.

Full warranty available on [www.corsaperformance.com](http://www.corsaperformance.com)

**Please confirm that all parts are present according to the bill of materials before beginning the installation.**

If something is missing call Tech Support at 440.891.099 or Toll Free: 1.800.486.0999



**NOTE: Each Kit Includes 1 set of tips**

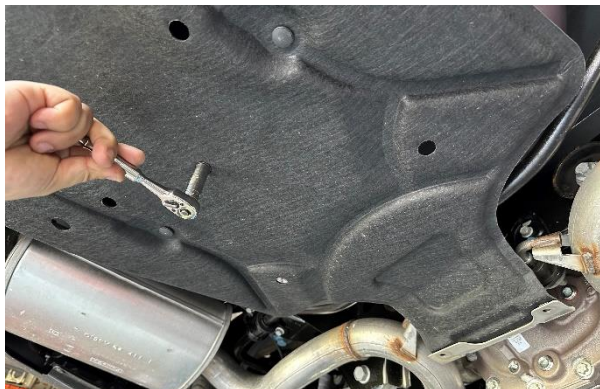
## BILL OF MATERIALS

1.	Driver Active Muffler Assembly (20MU2154)	2.	Passenger Active Muffler Assembly (20MU2155)
3.	Outer 4.0" Slash Cut Tip Assembly (2) (20MU3018)	4.	Passenger 4.0" Slash Cut Valved Tip Assembly (20MU3031)
5.	Driver 4.0" Slash Cut Valved Tip Assembly (20MU3032)	6.	Passenger 4.0" Straight Cut Valved Tip Assembly (20MU3033)
7.	Driver 4.0" Straight Cut Valved Tip Assembly (20MU3034)	8.	Outer 4.0" Straight Cut Tip Assembly (2) (20MU3035)
9.	Axle Pipe Inlet to Stock Adapter (2) (20MU4074)	10.	Driver Axle Pipe Assembly (20MU4250)
11.	Passenger Axle Pipe Assembly (20MU4251)	12.	Hardware Kit (20MU7087)

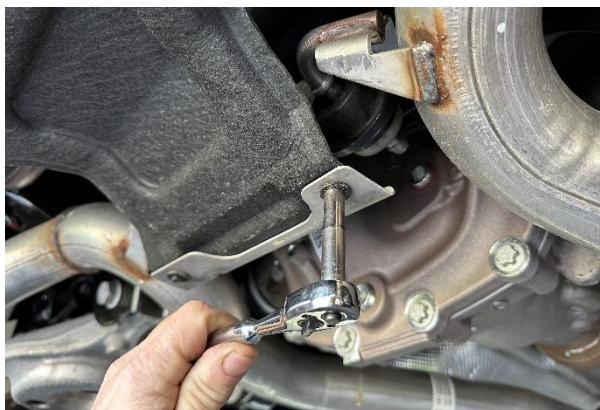
**CAUTION:** Never work on a hot exhaust system. Allow the vehicle to cool for at least an hour and a half. Always wear eye protection when working under a vehicle. It is recommended to use cotton gloves to protect stainless steel surfaces from permanent grease and oil stains.

### REMOVAL INSTRUCTIONS

### FACTORY EXHAUST



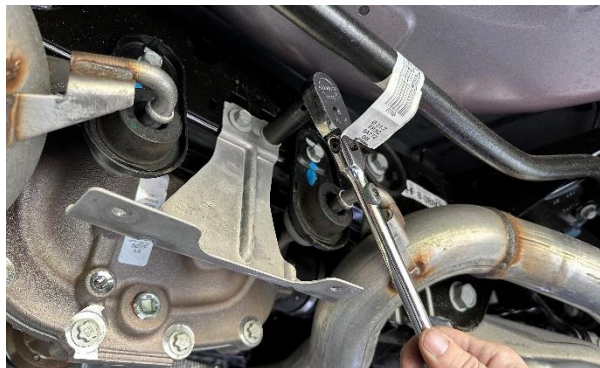
1. The rear under tray is secured by two push clips, one 10mm bolt, and seven 7mm bolts. Use a 1/4" drive ratchet and 10mm socket to remove the bolt securing the center of the rear under tray. Next, remove the two push clips using a removal tool or flat head screwdriver.



2. Use a 1/4" drive ratchet and 7mm socket to remove the two bolts securing the forward end of the rear under tray.



3. Use a 1/4" drive ratchet and 7mm socket to remove the five bolts securing the rearward end of the rear under tray to free it from the vehicle. **Set aside the rear under tray and fasteners in a protected location to be reused in INSTALL STEP 20.**



4. Use a 3/8" drive ratchet and 13mm socket to remove the two bolts securing the rear under tray mounting bracket to the chassis; this will free it from the vehicle. **Set aside the rear under tray mounting bracket and the fasteners in a protected location to be reused in INSTALL STEP 10.**

Continued on Next Page ...

### REMOVAL INSTRUCTIONS

### FACTORY EXHAUST



- 5.** Use a push clip removal tool, or a flat head screwdriver to remove the driver and passenger side Christmas tree fasteners (holding the valve actuator wiring harnesses to the anchor brackets) from the exhaust valves. Next, unplug the wiring harness from the exhaust valve actuators located on the inner most driver and passenger tips. To release the plug, slide the white locking clip away from the actuator, press down on the clip and slide the plug away from the actuator.



- 6.** Both the driver and passenger side valve wiring harness connections should now be disconnected and hanging clear of the stock rear mufflers as shown.



- 7.** Starting on the driver side, measure 19 3/4" away from the flange on the stock resonator, following the outside profile of the exhaust pipe. The tape measure should follow the bend profile of the pipe.



Continued on Next Page ...

### REMOVAL INSTRUCTIONS

### FACTORY EXHAUST



**8.** Measure 20" away from the flange on the stock resonator, following the outside profile of the exhaust pipe of the passenger side.



**9.** Using a chain cutter or similar device, cut both the driver and passenger side exhaust pipes at the marked locations. Place a jack stand or similar device under the stock tunnel section of the exhaust for support. Once the axle pipes are cut, there are no additional stock hangers supporting the tunnel section.



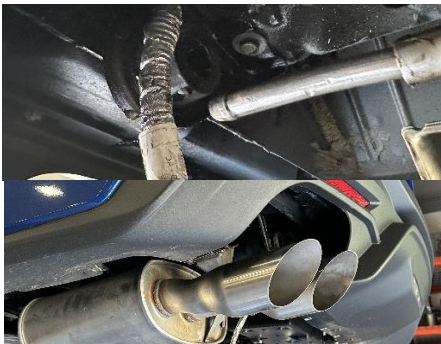
**10.** Use a 3/8" drive ratchet and 13mm socket to remove the bolt holding the driver side hanger grommet assembly. Push up slightly on the exhaust and slide the hanger grommet assembly rearward to free it from the rear suspension sub-frame. Rotate the hanger grommet assembly a minimum of 90° so it will not interfere with the rear suspension sub-frame. **Set aside the fastener in a protected location to be reused in INSTALL STEP 5.**



Continued on Next Page ...

## REMOVAL INSTRUCTIONS

## FACTORY EXHAUST



- 11.** Lower the cut end of the driver side muffler assembly just enough to create clearance between the pipe and any suspension components. Slide the whole muffler assembly forward to remove the rear muffler hanger from the hanger grommet. The driver muffler assembly will now be free from the vehicle.

**NOTE:** The use of a soap and water solution may aid in the removal of the hanger grommets.

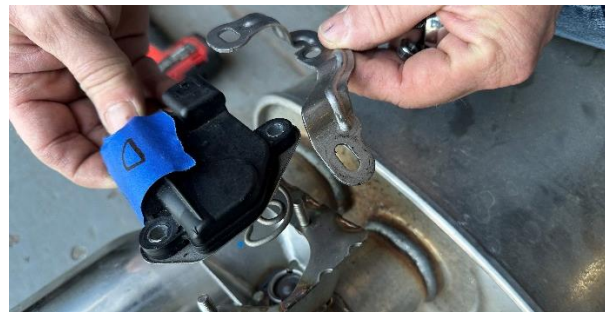
Repeat **REMOVAL STEPS 10-11** for the passenger side.



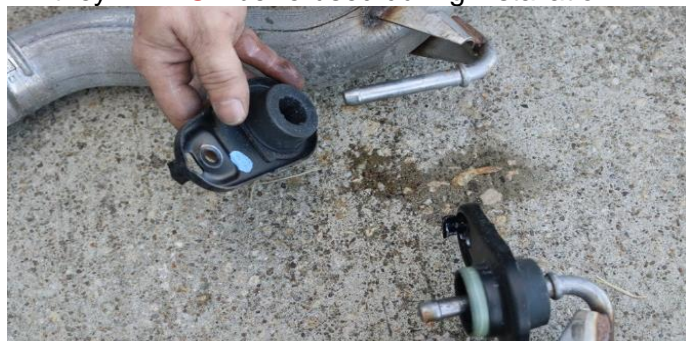
- 12.** Place a piece of tape on each exhaust valve actuator and label them "D" for driver and "P" for passenger side.



- 13.** Use a 3/8" drive ratchet and a 10mm socket to remove the three nuts on each actuator. Remove the actuators from their valve assemblies. Place the actuators in a safe location to be used during **INSTALL STEP 13**. Install the hardware and anchor brackets back onto the studs or store in a safe location since they will **NOT** be re-used during installation.



- 14.** Remove the driver and passenger side hanger grommet assemblies from the axle pipe hangers using grommet pullers or a similar device. **Set aside the hanger grommet assemblies to be reused in INSTALL STEP 2.**



**NOTE:** Both hanger grommets are oriented as shown on the stock exhaust, the grommets will need to be reinstalled in the same direction for the CORSA exhaust system.

- 15. IMPORTANT:** Carefully and thoroughly de-burr the stock tunnel muffler (resonator) outlet pipes from any burrs and sharp edges. This is important as any burrs will prevent the axle pipe inlet to stock adapters from sliding over the stock exhaust pipes.

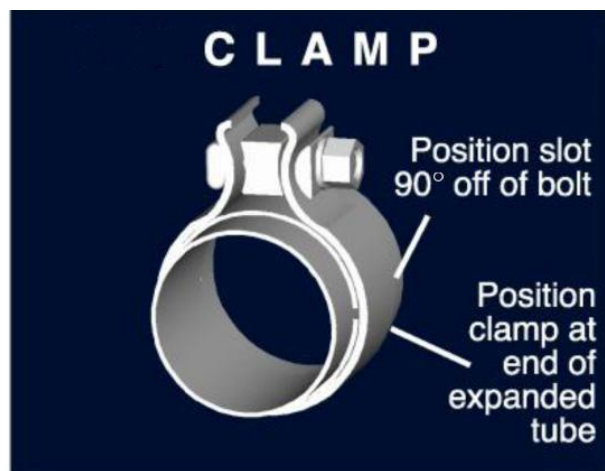
**Step 15** concludes the removal of the factory exhaust.

### WARNING! DO NOT SKIP THIS STEP!

It is recommended to apply anti-seize lubricant to the threads **ONLY** of all the clamps and flange bolts. Failure to follow this procedure can cause nuts to seize on clamps and potentially destroy threads.

After applying anti-seize lubricant, be sure to **thoroughly** clean your hands, as lubricant will tarnish stainless steel.

All clamps should be tightened using a properly calibrated Torque Wrench. Using an air impact gun will damage the clamp and reduce its ability to effectively seal the joint. It may also cause the joint to separate, thereby causing damage to your exhaust system and to your vehicle.



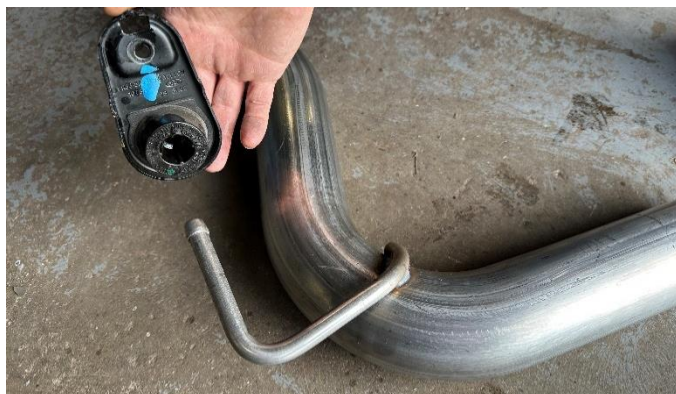
**NOTE:** Align all clamps so that the center of the clamp bolt is 90 degrees from the notch in the pipe.

### INSTALLATION INSTRUCTIONS

CORSA EXHAUST



1. Locate the two tunnel outlet adapters, along with two 2 1/2" clamps. Install the clamps on the 2 1/2" end of the adapter so that the bolt is vertical with the nut towards the ground and the bolt is towards the inside of the vehicle. Slide the adapters over the factory tunnel muffler outlet pipes and tighten the clamps using the ratchet and 15mm deep socket, until the adapters are snug on the pipes. The notches on the 2 1/2" end of the adapters should be parallel to the ground. **WARNING: DO NOT over tighten the clamps as this may oval the 3" end of the adapter, making further installation more difficult.**



2. Locate the passenger side axle pipe assembly, and the hanger grommet assembly removed during **REMOVAL STEP 14** of the stock exhaust removal process. Install the hanger grommet assembly onto the front hanger of the muffler assembly in the same position as previously installed on the stock exhaust.

**NOTE:** The use of a soap and water solution may aid in the installation of hanger grommets.

Continued on Next Page ...

### INSTALLATION INSTRUCTIONS

CORSA EXHAUST



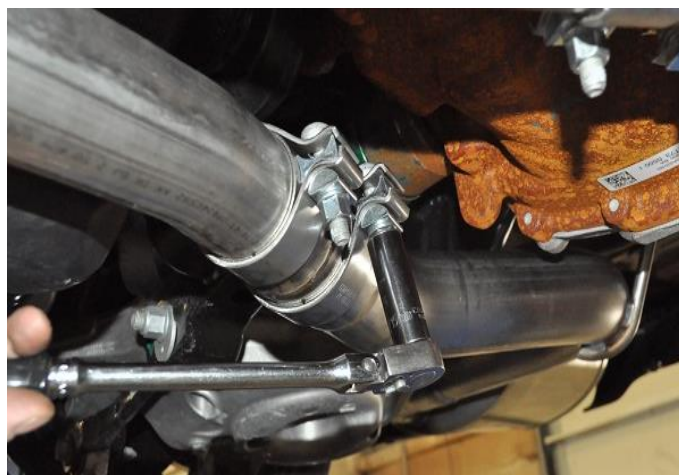
- 3.** Locate one 3" clamp. Install the clamp on the passenger side axle pipe so that the bolt is vertical with the nut towards the ground and the bolt is towards the inside of the vehicle



- 4.** Slide the axle pipe inlet pipe over the passenger side adapter. **NOTE:** The use of a soap and water solution may aid in the installation of hanger grommets.



- 5.** Locate a 13mm bolt set aside during **REMOVAL STEP 10** of the stock exhaust removal process. Install the front passenger hanger grommet assembly onto the rear suspension sub-frame and tighten it down with the 13mm bolt, 3/8" ratchet and 13mm socket.



- 6.** Tighten the clamp connecting the passenger axle pipe to the 3" adapter using the 3/8" ratchet and 15mm deep socket until the axle pipe assembly is snug on the adapter.

Repeat **INSTALL STEPS 2-6** on the driver side of the vehicle.

Continued on Next Page ...

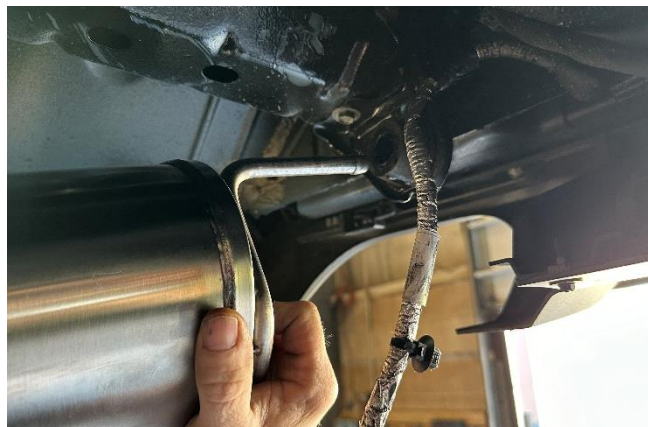


### INSTALLATION INSTRUCTIONS

CORSA EXHAUST



- 7.** Locate the passenger side muffler assembly and one 3" clamp. Install the clamp on the muffler inlet pipe so that the bolt is vertical with the nut towards the ground and the bolt is towards the muffler case (facing the rear of the vehicle).



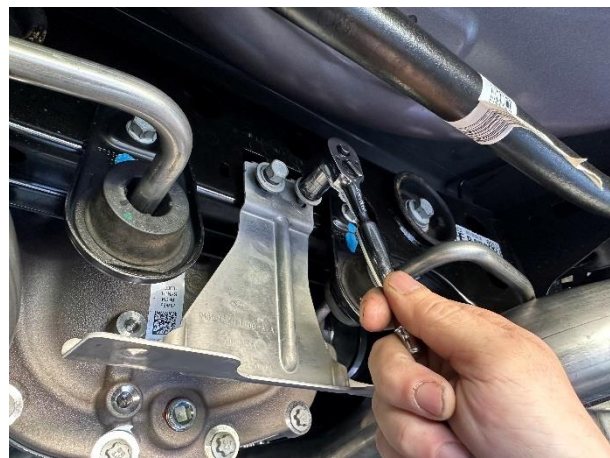
- 8.** Slide the rear hanger into the rear hanger grommet located on the vehicle above and just inside of the passenger side tip cut out.

**NOTE:** The use of a soap and water solution may aid in the installation of hanger grommets.



- 9.** Slide the muffler inlet pipe over the passenger side axle pipe outlet. Tighten the clamp using the 3/8" ratchet and 15mm deep socket until the muffler assembly is snug on the axle pipe.

Repeat **INSTALL STEPS 7-9** on the driver side of the vehicle.



- 10.** Locate the rear under tray mounting bracket and the two bolts set aside in **REMOVAL STEP 4** of the stock exhaust removal process. Install the rear under tray mounting bracket onto the rear suspension sub-frame and tighten it down with the two bolts using a 3/8" ratchet and 13mm socket.

Continued on Next Page ...

### INSTALLATION INSTRUCTIONS

### CORSA EXHAUST



- 11.** Locate one of the passenger non-valved tip assemblies and one 3" clamp. Install the clamp on the tip inlet pipe so that the bolt is vertical with the nut towards the ground and the bolt towards the outside of the vehicle.



- 12.** Slide the tip assembly over the muffler outlet pipe and tighten the clamp using the ratchet and 15mm deep socket until the tip assembly is snug on the muffler outlet pipe. Repeat for the driver side tip assembly.



- 13.** Confirm the spring wire form is correctly positioned on the passenger side stock valve actuator from **REMOVAL STEP 13**. Position and install passenger valve actuator onto the CORSA passenger valved tip assembly. Confirm that the spring wire form is located within the grooves of the valve assembly.

**NOTE:** The passenger valved tip assembly can be distinguished from the driver side by the rotation of the valve relative to the CORSA etch. Hold the tip assemblies with the etch position directly on top. The valve will be rotated towards the right for the passenger side tip assembly and towards the left for the driver side when viewed from the outlet end. Both slash cut and straight cut options are shown for reference.

Continued on Next Page ...

### INSTALLATION INSTRUCTIONS

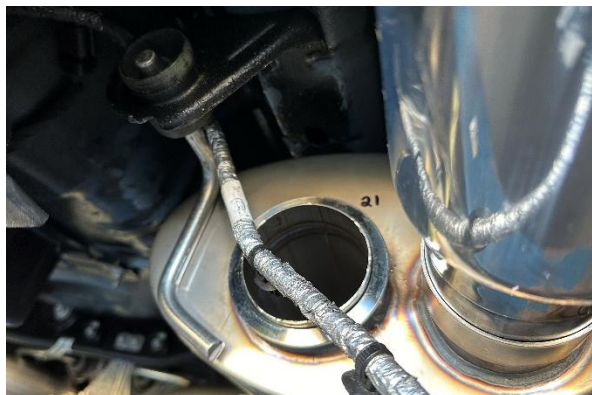
### CORSA EXHAUST



- 14.** Line up the holes on the passenger actuator to the threaded spacers on the valve assembly.

**NOTE:** There will be some resistance from the spring wire form as you rotate the actuator into position. This is normal, as the valve plate is designed to apply pressure to the valve body when in the closed position and will help in preventing rattles.

Use a 10mm socket and 3/8" drive ratchet to secure the valve actuator with the three provided M6 bolts with a blue Loctite patches. Repeat **INSTALL STEPS 13-14** for the driver side valved tip assembly.



- 15.** Reposition the driver and passenger valve actuator harnesses over their corresponding muffler hangers.



- 16.** Connect the passenger side harness into the actuator mounted to the passenger valved tip assembly by pushing the plug until you hear a click, followed by the white locking clip. Once the actuator is secure, remove the "P" label from the actuator.



- 17.** Mate the v-band flange on the driver valve tip assembly to the flange on the muffler. Align and position the v-band flange so both flanges are fitted within the grooves of the clamp. Reinstall the lock nut and snug the clamp using an 11mm deep socket and 3/8" drive ratchet. The clamp should be positioned with the lock nut towards the inside of the vehicle, the bolt on top and horizontal.



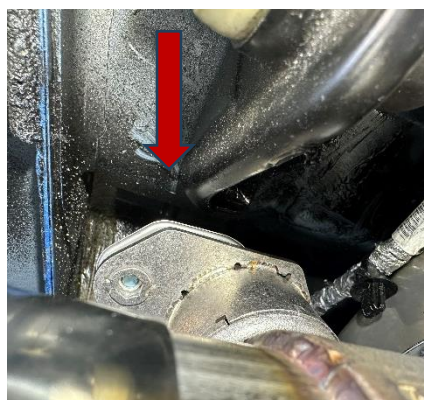
Continued on Next Page ...

## INSTALLATION INSTRUCTIONS

CORSA EXHAUST



- 18.** Repeat **INSTALL STEPS 16-17** for the driver side valved tip assembly.



- 19.** Adjust the system, including the adapter overlap on the stock exhaust, the axle pipe depth and rotation, the rear muffler depth and rotation, and the tip depth and rotation, so that the tips are centered in the bumper valence. Rotate the tips so that the CORSA etch is on top. Check the position of all hangers to make sure they are properly seated within their corresponding grommets. Check clearances between the system components and chassis, especially the valve to chassis clearances. At this time, tighten the v-band clamp to 10ft-lbs and all other clamps to 45ft-lbs using the torque wrench and 15mm socket. Start the vehicle and cycle the exhaust modes from Quiet to Track to verify proper valve function.
- 20.** Locate the rear under tray and all fasteners set aside in **REMOVAL STEP 3** of the stock exhaust removal process. Reinstall the rear under tray. Installation is reverse of removal. Refer to **REMOVAL STEPS 1-3**. Installation complete. This concludes the installation of your CORSA Performance exhaust system.

**NOTE:** During cold weather start-ups, you may experience an exhaust sound that is deeper and louder in tone than usual. This is temporary and will diminish to normal levels once your engine has reached its normal operating temperature.

**NOTE:** Immediately following the installation of your exhaust system, you may experience a trace of smoke after initial start-up. DO NOT be alarmed. The smoke is caused by the burning of a small amount of forming oil residue used in the manufacturing process.

**NOTE:** It is strongly suggested that all clamps be checked and tightened after road testing the vehicle once the system has cooled.