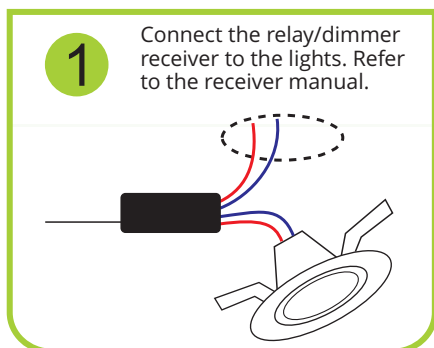
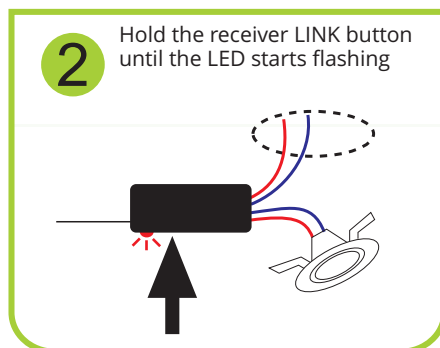


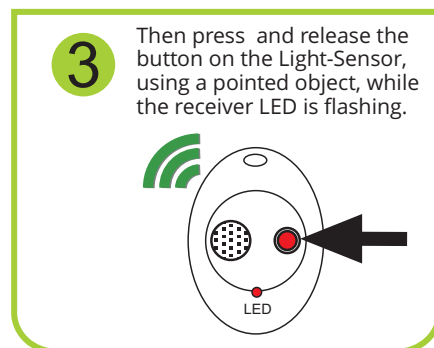
Receiver installation:



Receiver linking:



Light-Sensor linking:



To unlink a button: Repeat steps 2&3.

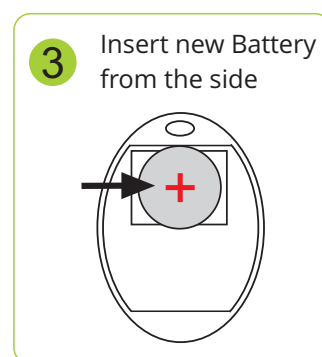
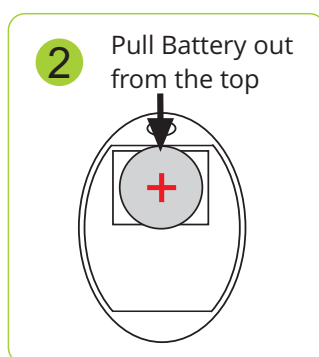
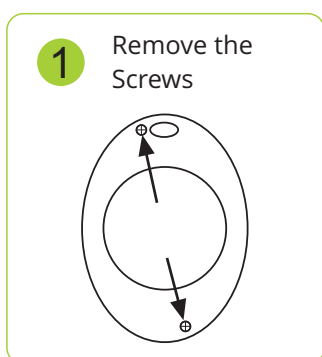
To clear all links in a Receiver:

Hold the Receiver Link Button until the LED is ON solid (10 sec) then release.

Programming:

1. At the time of day when the ambient light is at the desired level at which the light should turn on - Press and hold the Sensor button until the LED stays on, then release.
2. The sensor will have now learned the light level.
3. NOTE: The light level measuring-time takes over 1 minute, allow for this time when testing.
4. To learn a new light level: Repeat Step 1.

Battery Replacement:



After replacing the battery, the LED will flash 3 times to indicate successful power-up.

- To test that the sensor is correctly linked, press and release the button - all linked receivers will switch on/off.
- Battery will require replacing if the LED flashes twice during a transmission.