



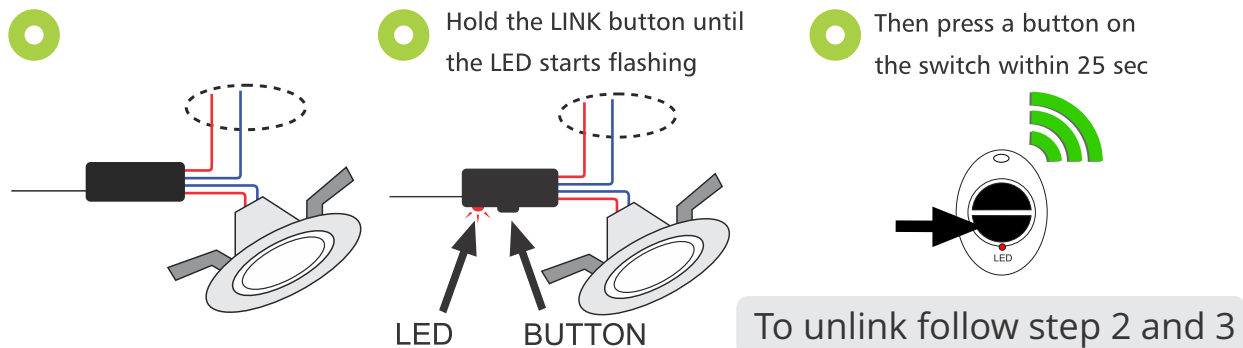
Features

- Conveniently switch receivers from the comfort of your car or wherever is most convenient for you.
- Link up to 30 QwikSwitch Receivers to each button i.e 30 way switching, hit one button and light up your whole house.
- LED battery low indicator.
- Can link to any QwikSwitch Receivers.
- Unique button identification.

Specifications

- 2 or 4 button keyfob transmitter.
- Input supply - CR2032 battery (Up to 2 year battery life).
- Form factor - enclosed casing 43mm (w) x 55mm (L) x 13mm (h).
- Radio Frequency - 868 MHz.
- Range - 30m through walls and floors, 100m line of sight. Repeaters (QS-T-REP) available if needed.

Linking to a receiver:



To unlink a button:

Repeat steps 2&3.

To clear all links in a Receiver: Hold the Link Button until the LED is ON solid (10 sec) then release.

A Receiver can link up to 30 different buttons.

Mount the Switch with double-sided tape or clip off the outer surround to expose standard 2x4 mounting holes.