



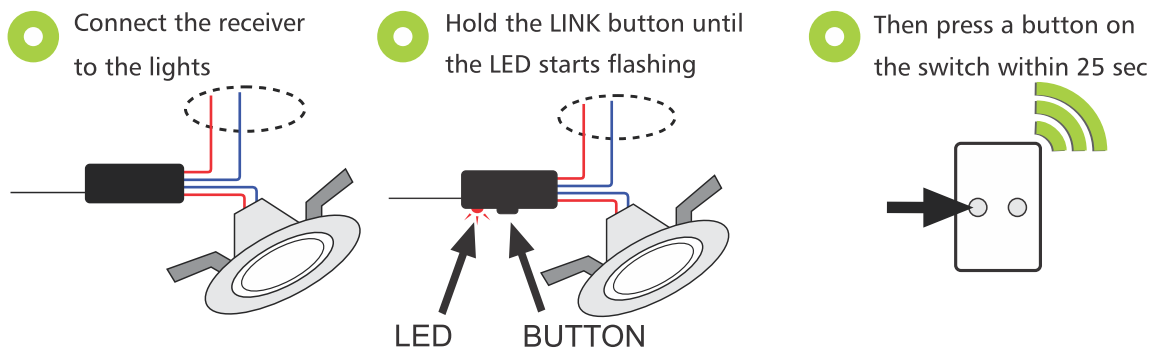
### Specifications

- 2 or 4 button transmitter.
- Input supply - 1 x CR2032 Battery (Up to 2 year battery life).
- Form Factor - Moulded casing - 80mm (w) x 126mm (L) x 10mm (H).
- Radio frequency - 868 Mhz.
- Range - 30m through walls and floors, 100m line of site.
- Repeaters available if needed (QS-T-REP).
- Unique button identification.
- Transmitter can link to any QwikSwitch receiver.
- Will fit over any existing light switch (2 x 4 box).

### Features

- Mount the QwikSwitch receiver to any flush mount surface.
- Front face can be removed to change battery.
- Link up to 30 QwikSwitch Receivers to each button. Ie. 30 way switching, hit one button and light up your whole house.
- LED battery low indicator.

### Linking to a receiver:



### Button operation:

Press = ON/OFF/STOP DIMMING  
 Hold = DIM UP/DOWN

LED Indicator on button press:  
 1 Flash = Normal operation  
 2 Flashes = Battery Low