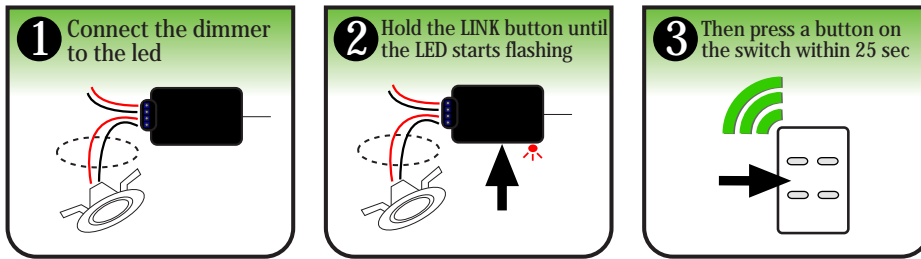




Qwik-Switch LED dimmer Installation



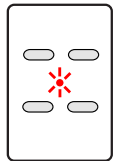
To unlink a button: Repeat steps 2&3.

To clear all links in a Receiver: Hold the Link Button until the LED is ON solid (10 sec) then release.

A Receiver can link up to 30 different buttons.

Mount the Switch with double-sided tape or clip off the outer surround to expose standard 2x4 mounting holes.

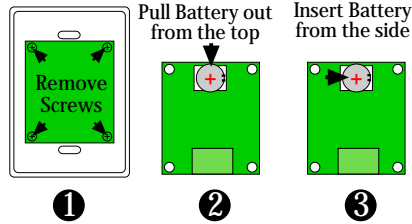
Transmitter:



Button Operation:
Press to activate function

LED Indicator on button press:
1 Flash = Normal operation
2 Flashes = Battery Low

BATTERY REPLACEMENT

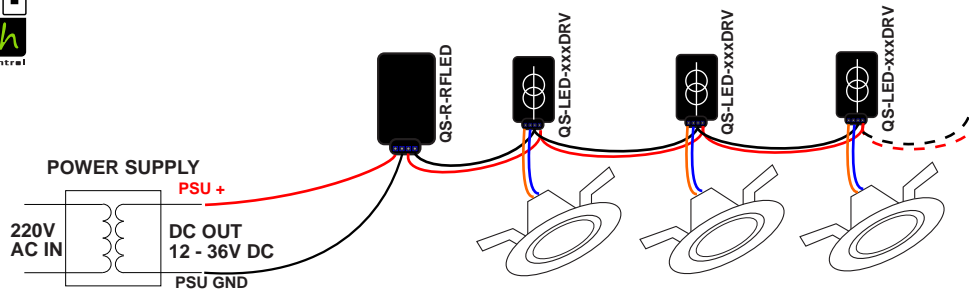


LED will flash 3 times to indicate successful power-up.

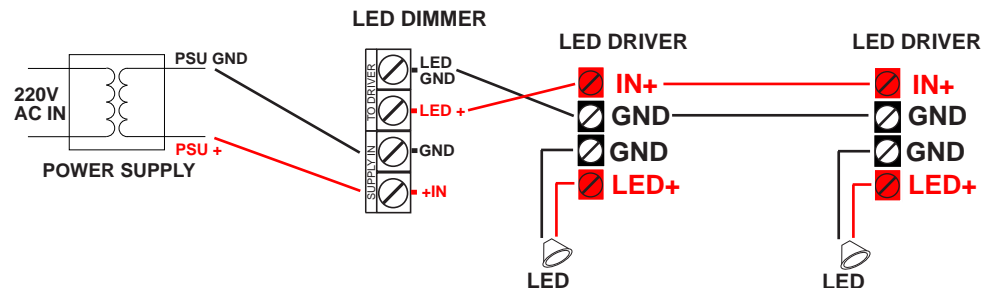
www.qwikswitch.co.za



Qwik-Switch LED dimming system - Wireless control (Option 1)



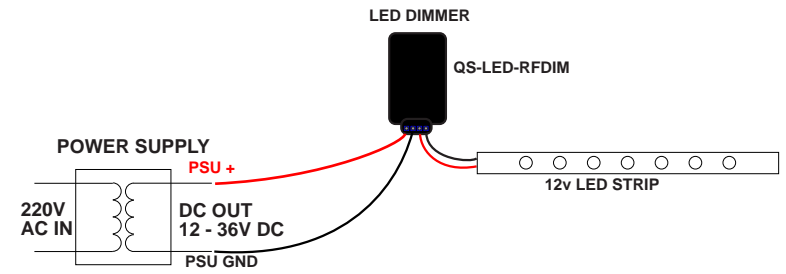
SELECT THE CORRECT VOLTAGE POWER SUPPLY TO MATCH THE LED VOLTAGE AND POWER MODULE DRIVER VOLTAGE



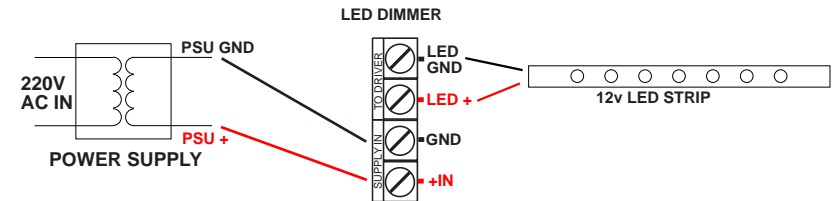
www.qwikswitch.co.za



Qwik-Switch LED dimming system - Wireless control (Option 2)



SELECT THE CORRECT VOLTAGE POWER SUPPLY TO MATCH THE LED VOLTAGE AND POWER MODULE DRIVER VOLTAGE



www.qwikswitch.co.za



LED DIMMING NOTES

GENERAL NOTES:

- 1) Maximum load of 3A per LED DIMMER
- 2) Maximum of one LED per CONSTANT CURRENT LED Driver
- 3) LED must be a DC dimmable type
- 4) Chose the correct driver for the LED used: 350mA, 500mA and 700mA types available
- 5) Power supply to be DC out, correct voltage, Current 30% higher than load
- 6) Compatible with most Qwik-Switch Transmitters

OPTION 1:

- Using one LED Dimmer to connect to multiple LED Drivers
- Shared Power Supply and Push Button
- Power supply to be DC out, correct voltage, Current 30% higher than load

OPTION 2:

- Using LED Dimmer to connect to 12v DC LED strip
- Maximum current 3A
- Power supply to be DC out, correct voltage, Current 30% higher than load

www.qwikswitch.co.za