



**WICKED
BRICK**

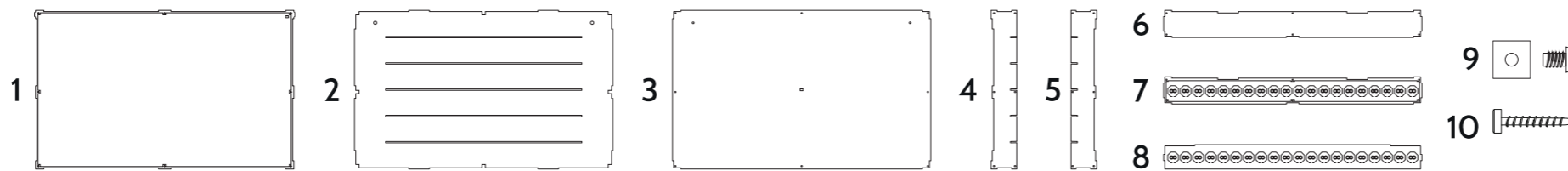
PLEASE NOTE:
All acrylic parts have protective film applied on both sides.

Some pieces appear with slightly translucent film, this will need to be removed before assembly.

Ensure all engraved lines face outwards.

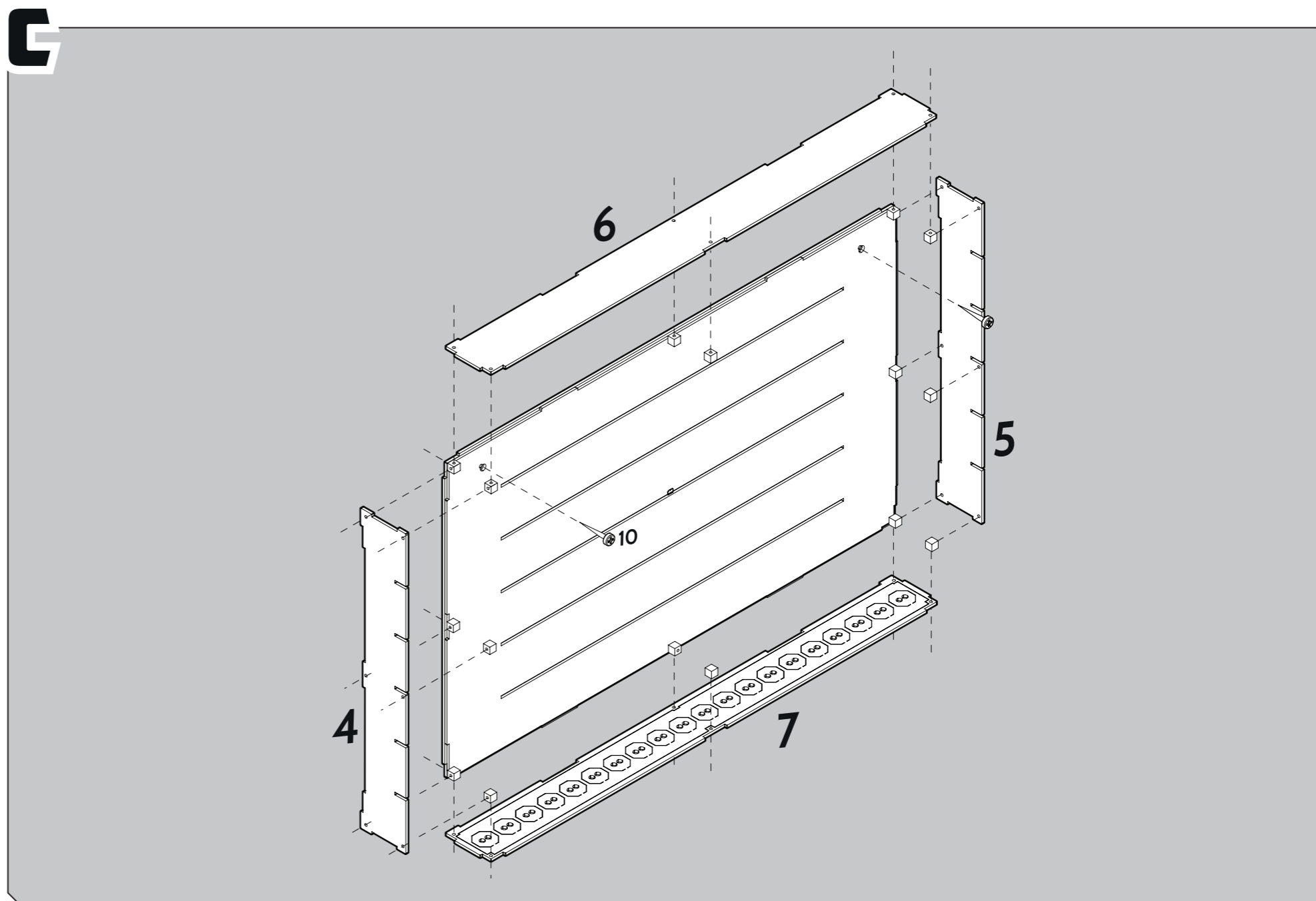
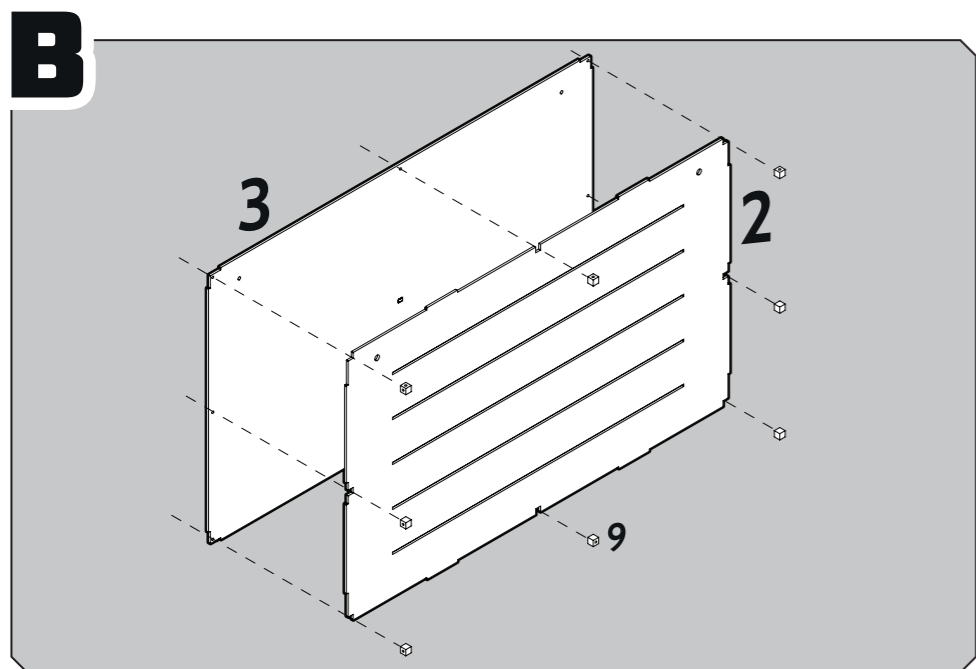
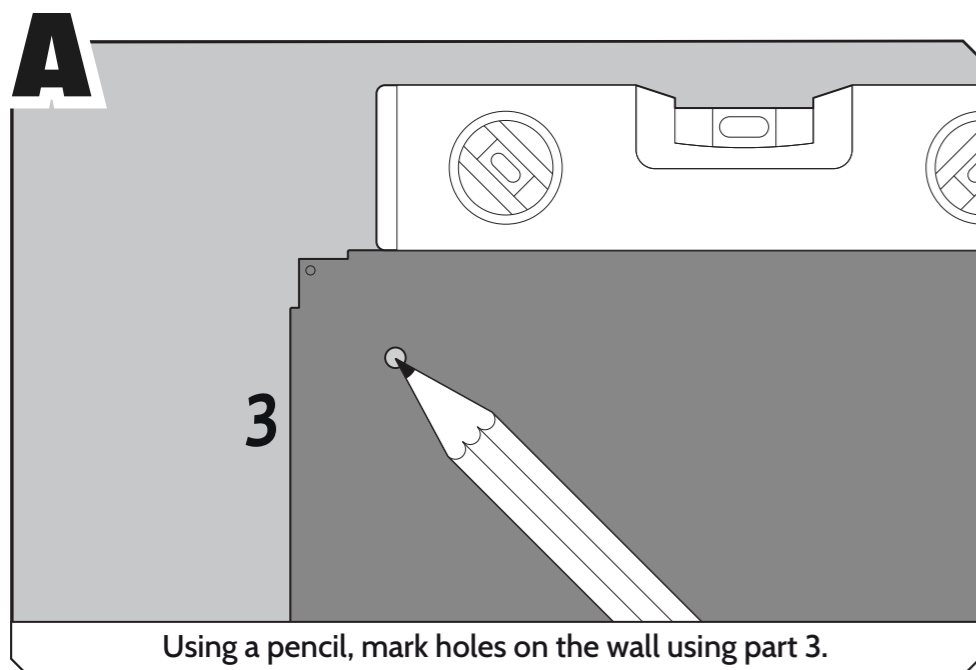
INSTRUCTIONS FOR: Wall Mounted Display Cases for LEGO® Minifigures

LDS896, LDS897, LDS898, LDS899, LDS900



- 1 - Front panel
- 2 - Backplate add-on
- 3 - Backplate
- 4 - Left panel
- 5 - Right panel
- 6 - Top panel
- 7 - Bottom panel
- 8 - Shelves
- 9 - Cubes and screw
(8x boxes)
- 10 - Flat head screws

*While the process remains the same, some parts found in each minifigure wall mounts are different widths and height, therefore requiring additional screws.





**WICKED
BRICK**

PLEASE NOTE:
All acrylic parts have protective film applied on both sides.

Some pieces appear with slightly translucent film, this will need to be removed before assembly.

Ensure all engraved lines face outwards.

INSTRUCTIONS FOR: Wall Mounted Display Cases for LEGO® Minifigures

LDS896, LDS897, LDS898, LDS899, LDS900



- 1 - Front panel
- 2 - Backplate add-on
- 3 - Backplate
- 4 - Left panel
- 5 - Right panel
- 6 - Top panel
- 7 - Bottom panel
- 8 - Shelves
- 9 - Cubes and screw
(8x boxes)
- 10 - Flat head screws

*While the process remains the same, some parts found in each minifigure wall mounts are different widths and height, therefore requiring additional screws.

