



WICKED BRICK

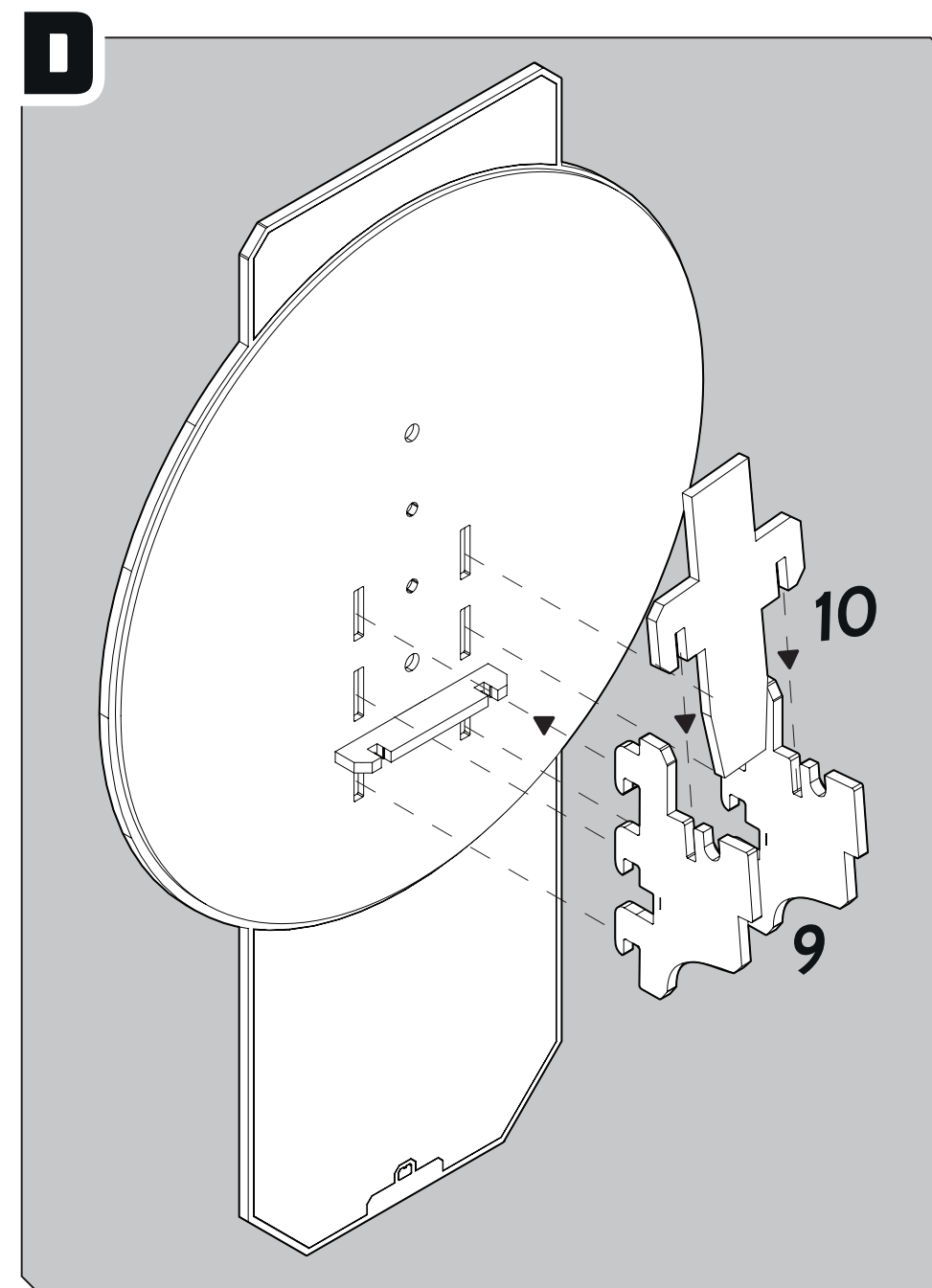
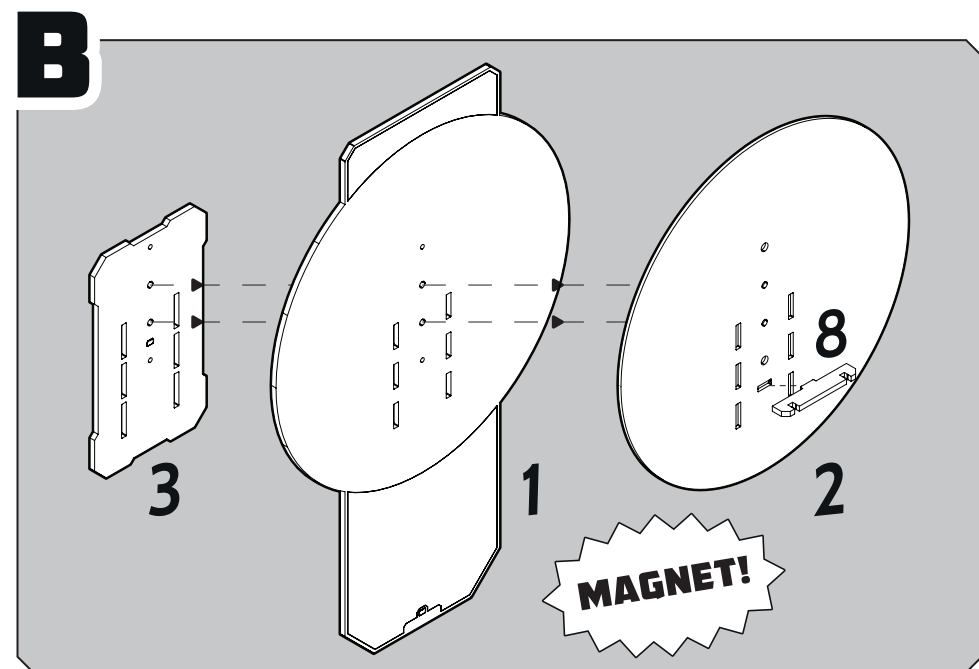
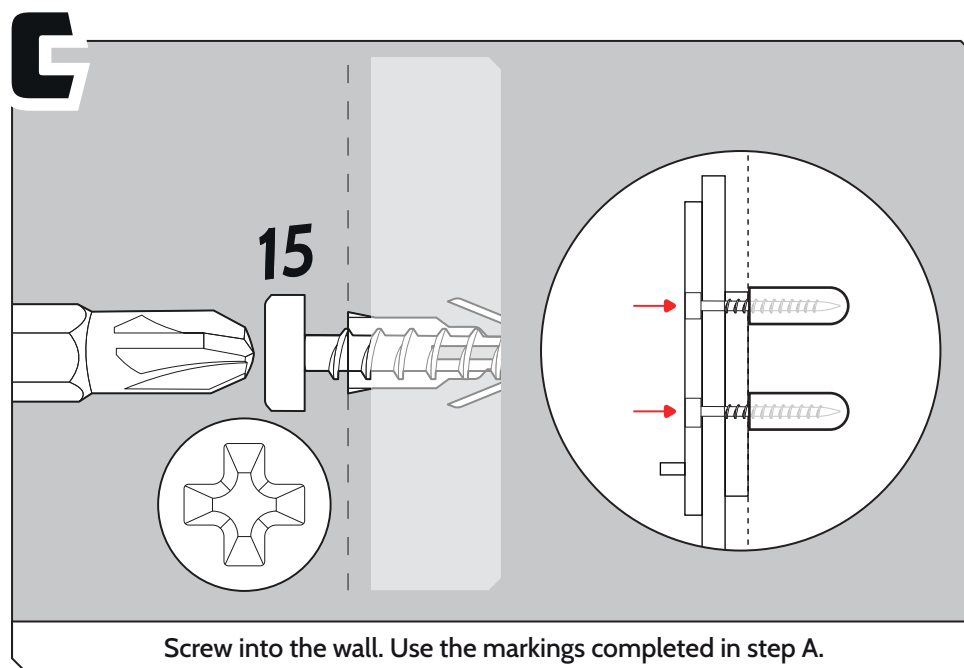
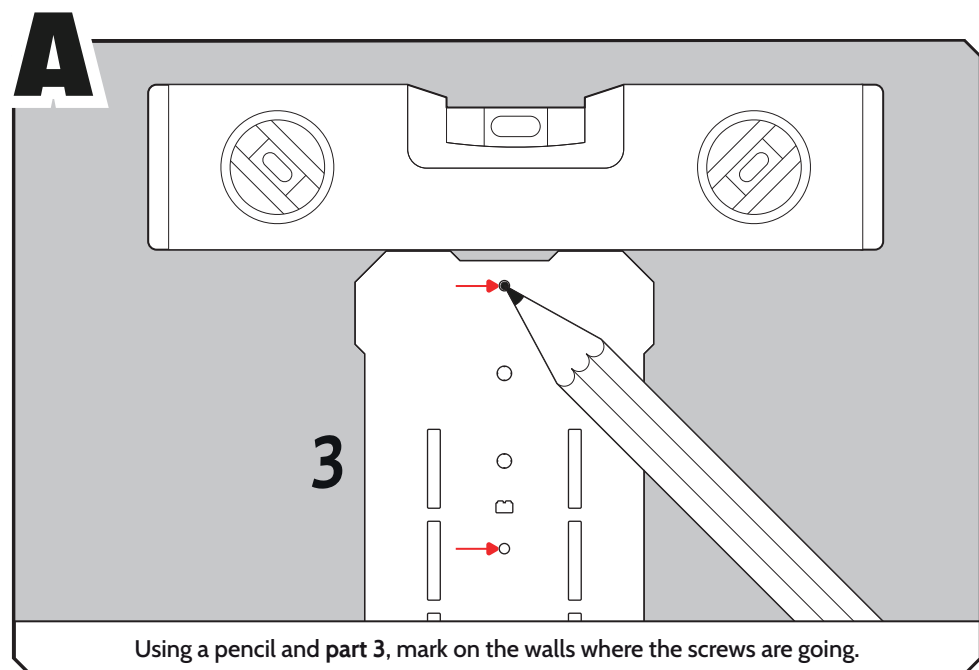
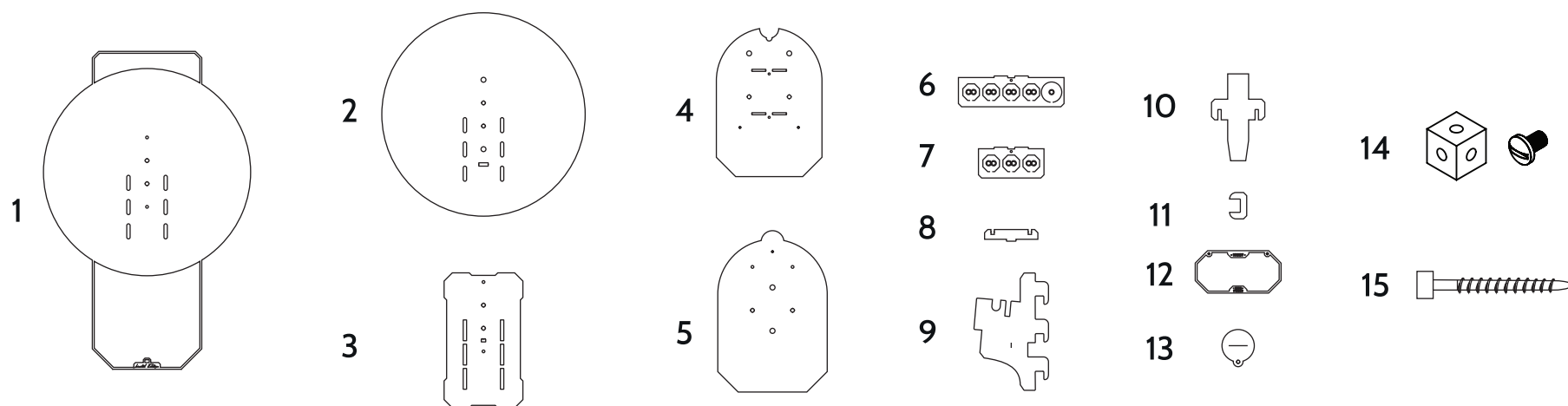
PLEASE NOTE:
All acrylic parts have protective film applied on both sides.

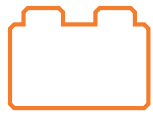
Some pieces appear with slightly translucent film, this will need to be removed before assembly.

Ensure all engraved lines face outwards.

INSTRUCTIONS FOR: LEGO® LE Dune Atreides Royal Ornithopter Wall Mount

LDS592.1.11





**WICKED
BRICK**

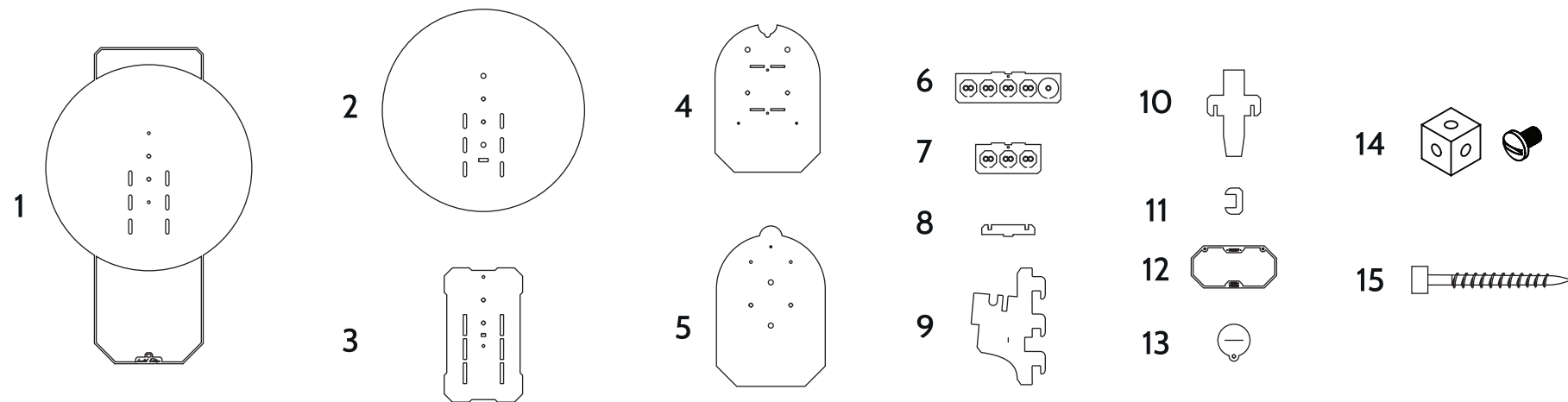
PLEASE NOTE:
All acrylic parts have protective film applied on both sides.

Some pieces appear with slightly translucent film, this will need to be removed before assembly.

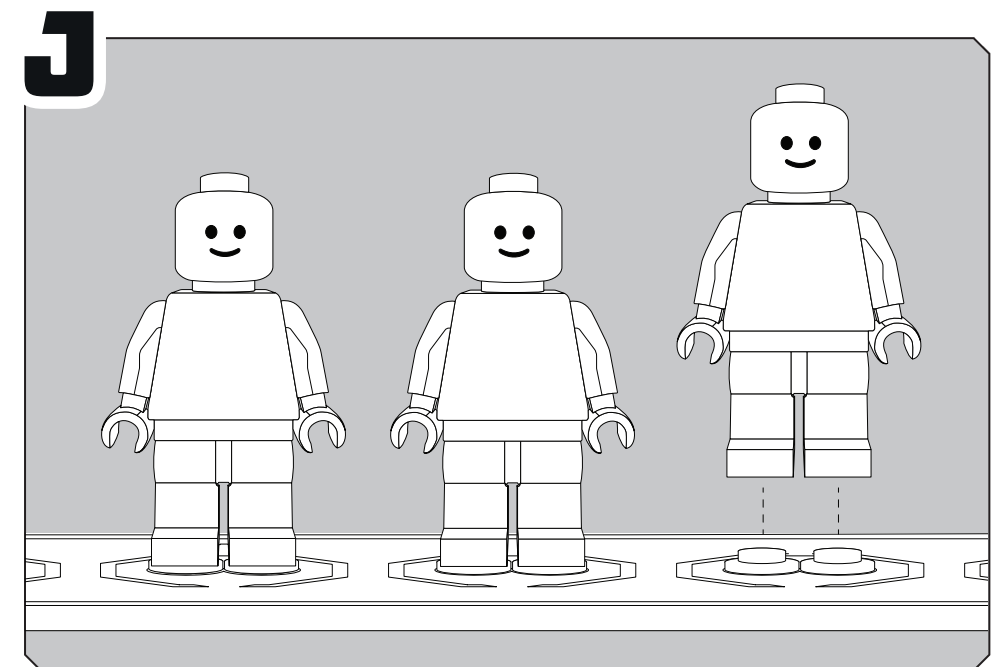
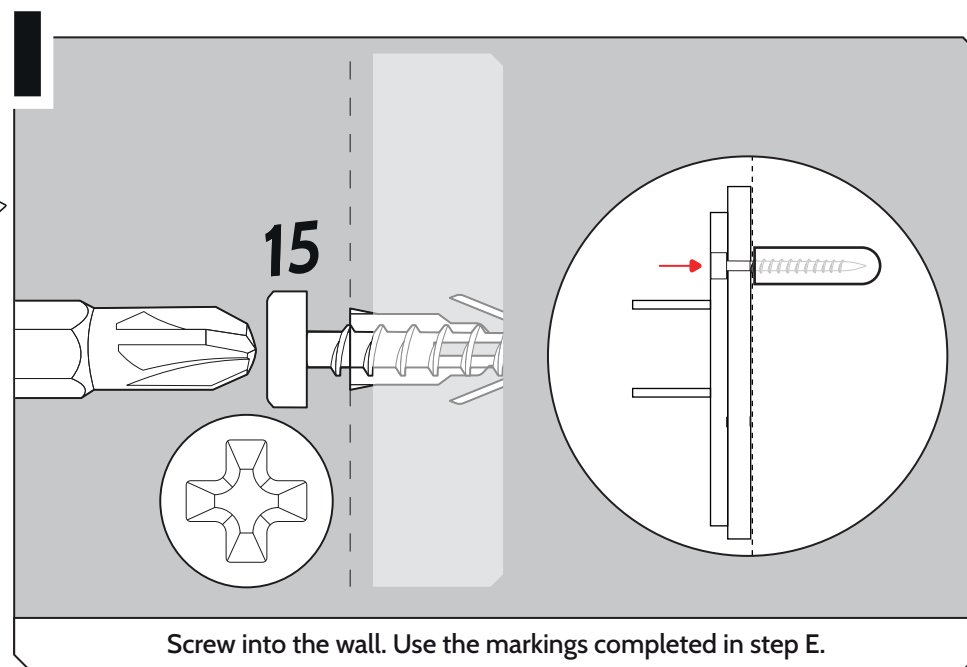
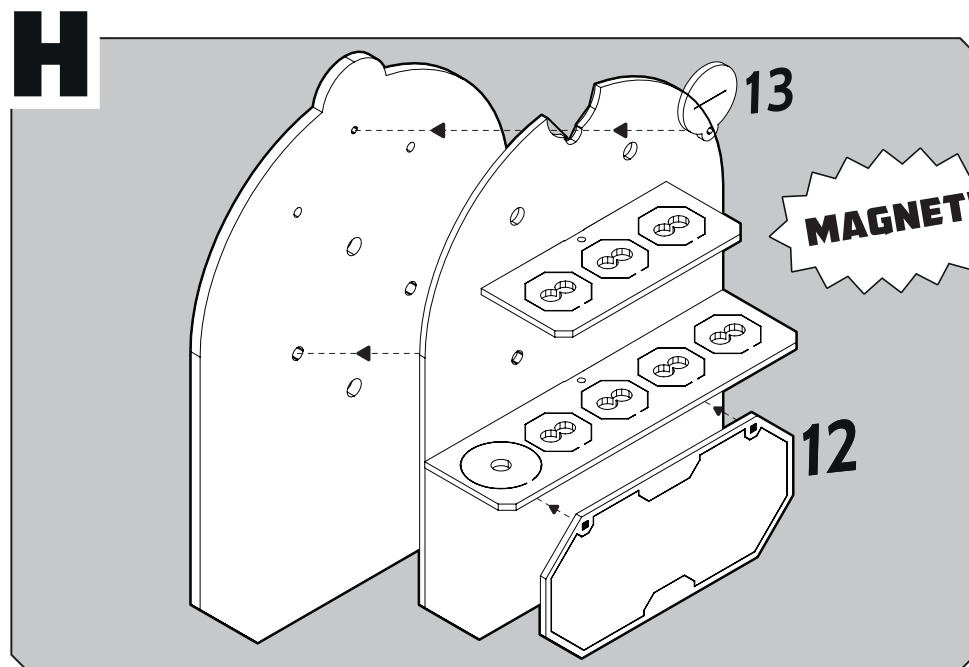
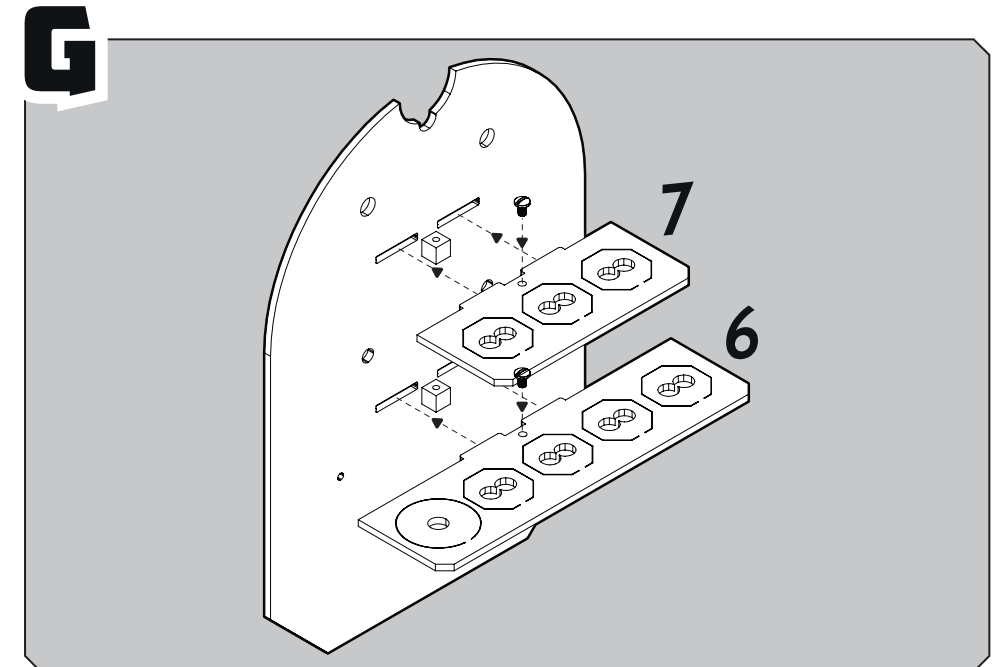
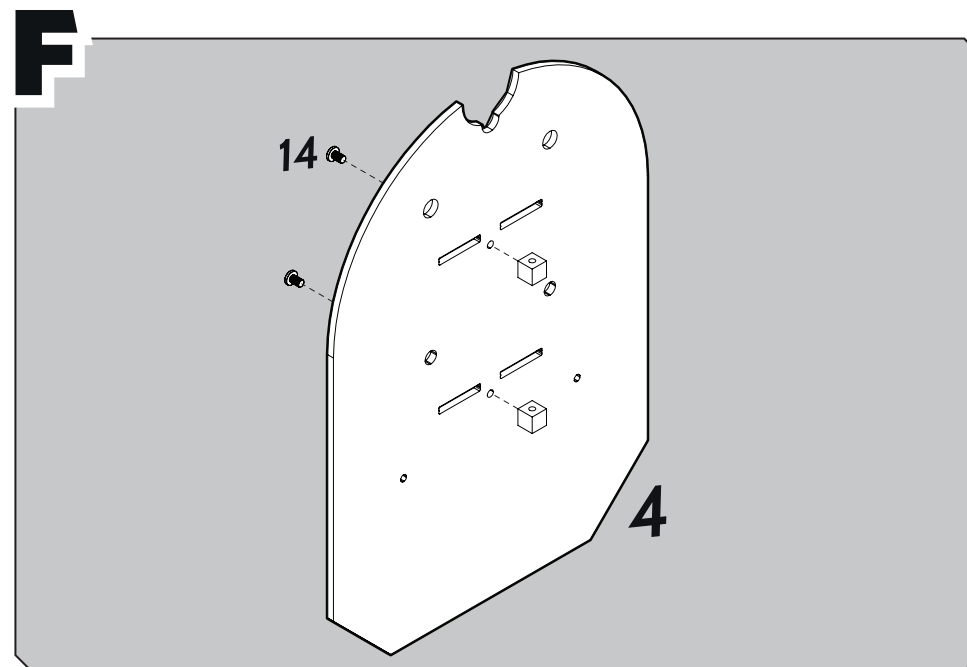
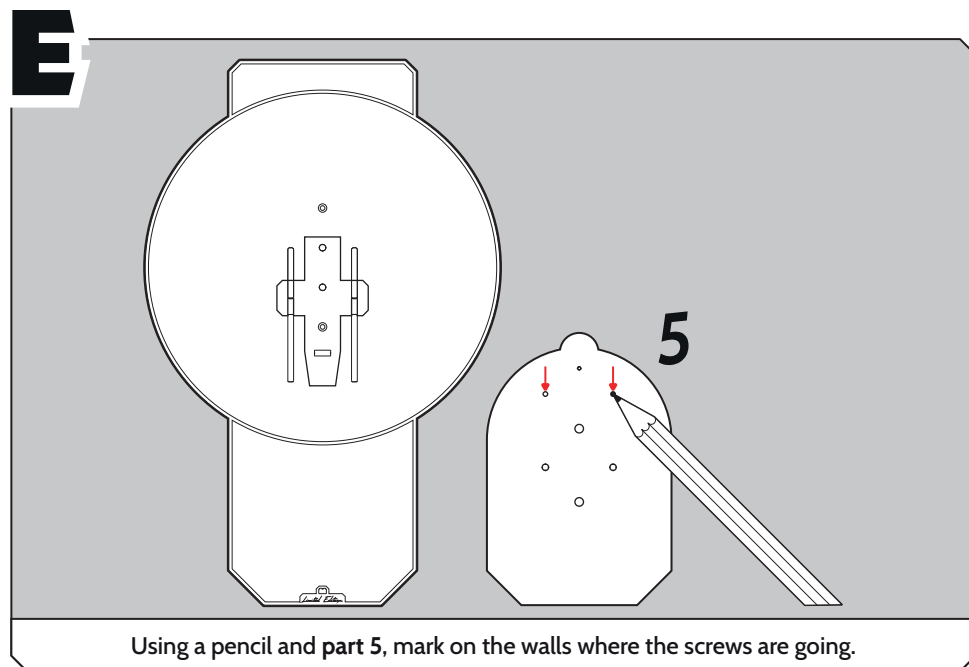
Ensure all engraved lines face outwards.

INSTRUCTIONS FOR: LEGO® LE Dune Atreides Royal Ornithopter Wall Mount

LDS592.1.11



- 1 - Back panel
- 2 - Main add-on
- 3 - Backplate
- 4 - Minifigure backplate
- 5 - Minifigure add-on
- 6 - Shelf 1
- 7 - Shelf 2
- 8 - Small support stem
- 9 - Side stem
- 10 - Large support stem
- 11 - Clips
- 12 - Plaque
- 13 - Numbered identifier
- 14 - Cubes and screws
- 15 - Flat head screw



INSTRUCTIONS FOR: LEGO® LE Dune Atreides Royal Ornithopter Wall Mount

LDS592.1.11

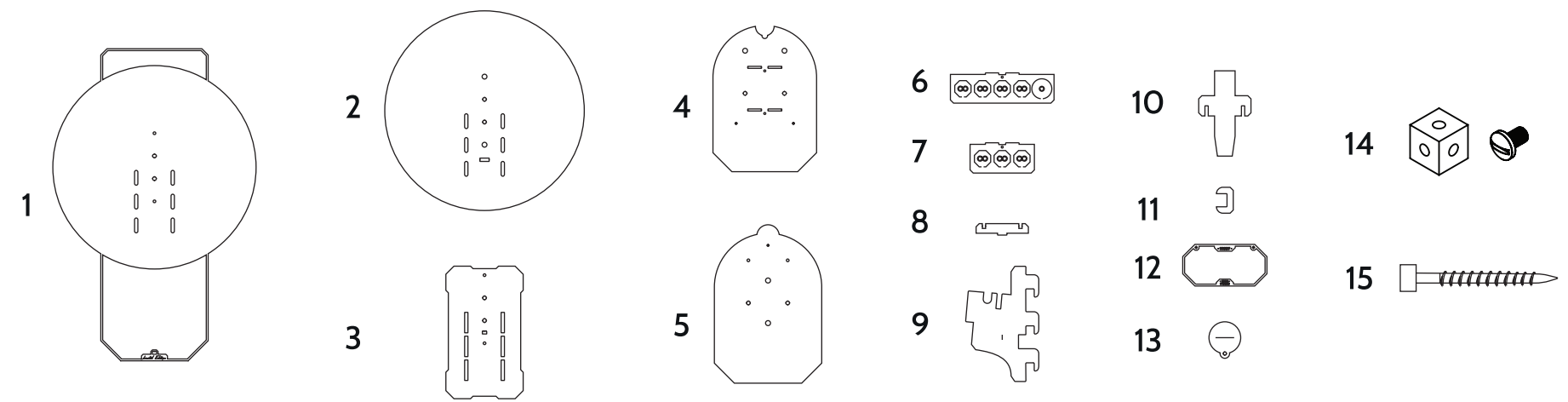


WICKED BRICK

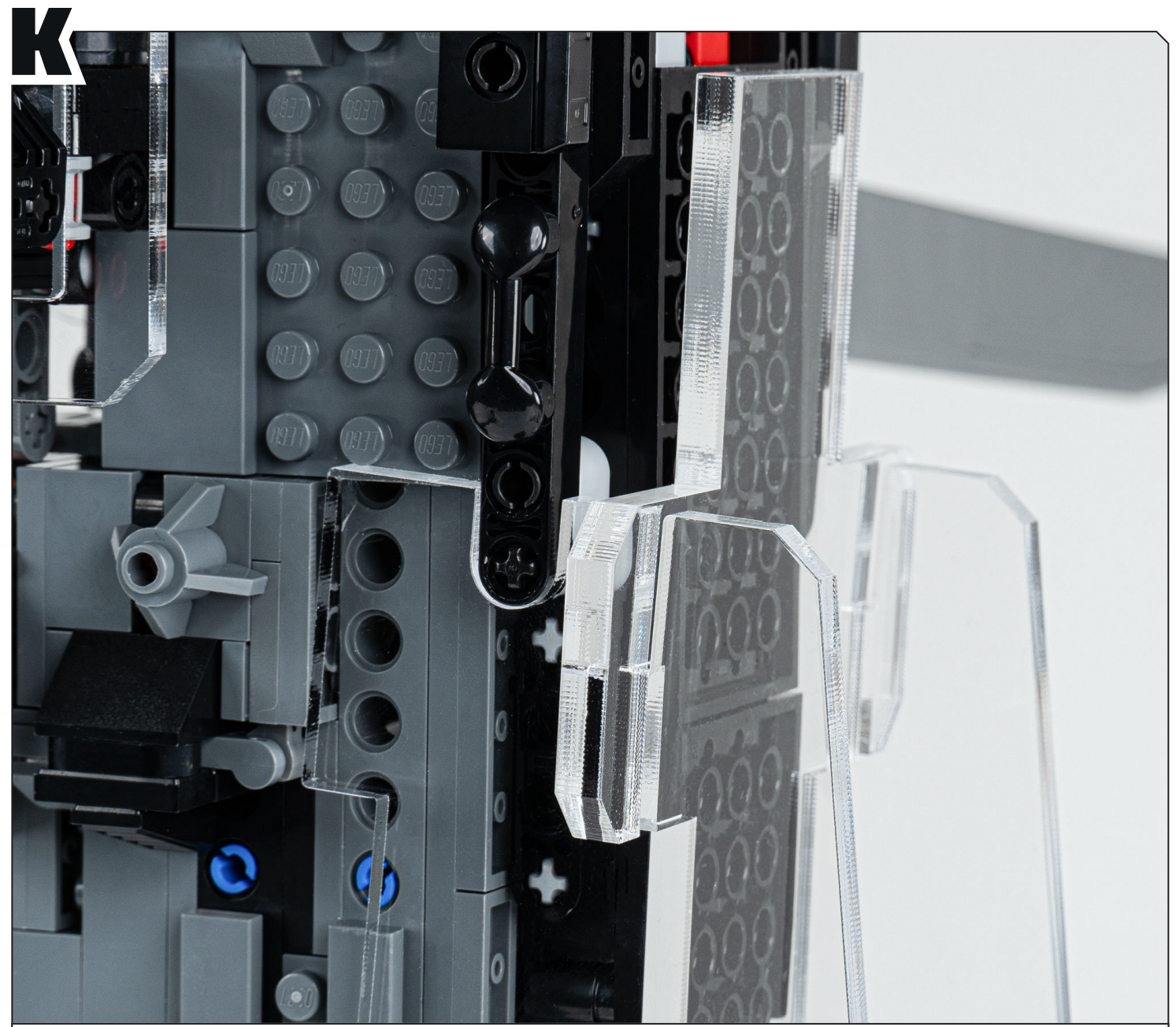
PLEASE NOTE:
All acrylic parts have protective film applied on both sides.

Some pieces appear with slightly translucent film, this will need to be removed before assembly.

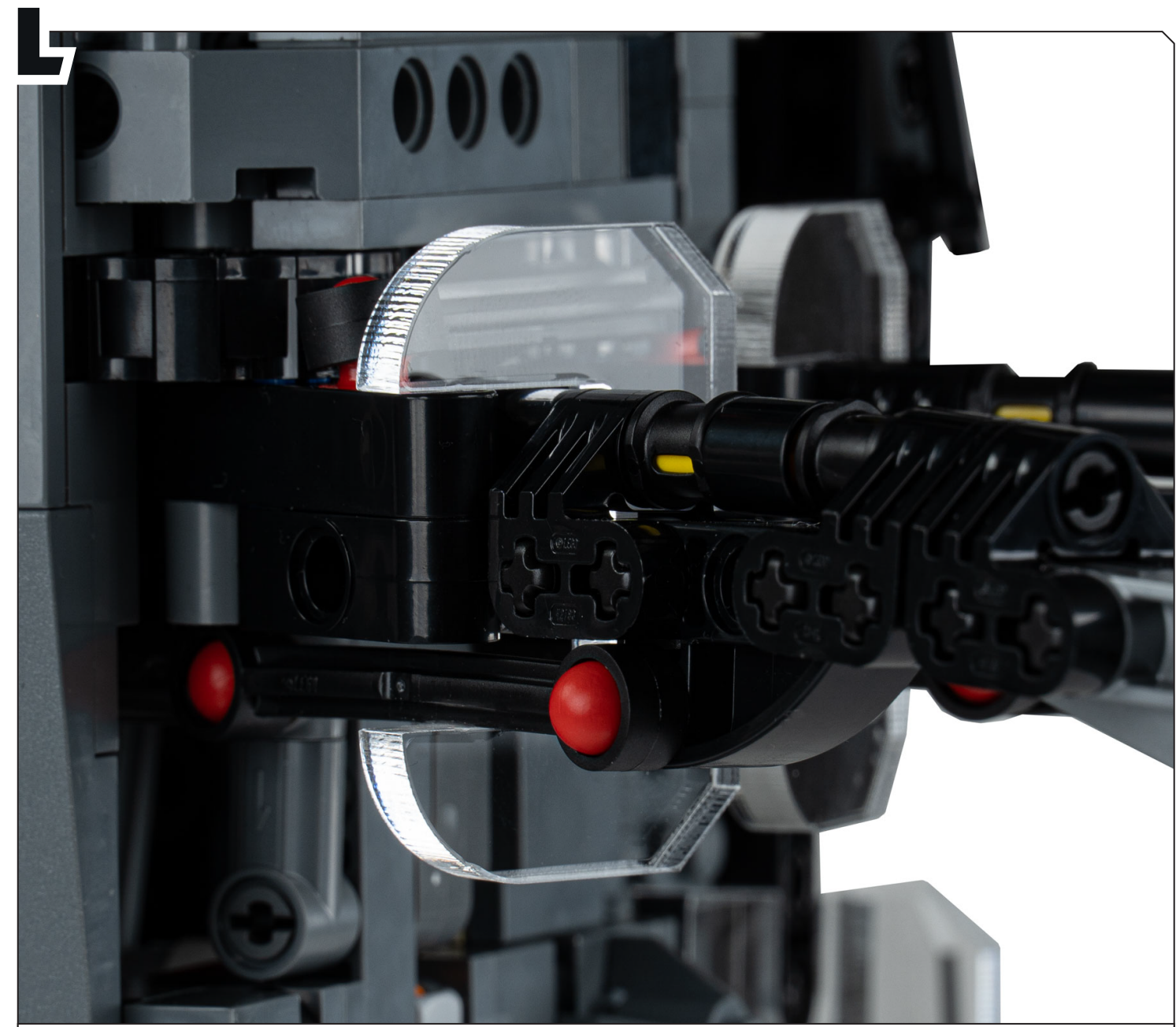
Ensure all engraved lines face outwards.



- 1 - Back panel
- 2 - Main add-on
- 3 - Backplate
- 4 - Minifigure backplate
- 5 - Minifigure add-on
- 6 - Shelf 1
- 7 - Shelf 2
- 8 - Small support stem
- 9 - Side stem
- 10 - Large support stem
- 11 - Clips
- 12 - Plaque
- 13 - Numbered identifier
- 14 - Cubes and screws
- 15 - Flat head screw



The photo above shows how the LEGO set attaches to the display stand.



Part 11 attaches to the wings of the Ornithopter as shown above.