

Installing Your Tiiwee Home Alarm System in 4 simple steps

1. Unpack: Unpack all kit components and lay them in front of you on the table.



2. Remove Battery Protection:

A1 Siren: Open the back panel from the A1 Siren and remove the white battery protection. You hear one beep, and the A1 Siren switches on automatically.




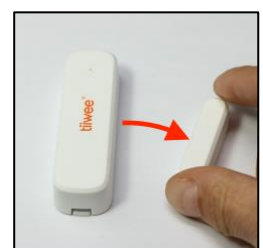
Window sensors: Remove the white battery protection at the bottom of the sensor by pulling it.



Motion detector (PIR kits only): Insert batteries (included with the product). Please assure correct polarity.


3. Familiarize Yourself with Your System:

- a. Arrange the window sensors such that the magnet is on the right-hand side of each sensor. The little triangles on the middle of the sides of the sensor and the magnet cannot be more than 8 mm apart. Position them so that they are facing each other.
- b. Arrange the motion detector as such that the detection window is facing away from you.
- c. Press the "S" button of the remote control until you hear the Chime sound ("Ding-Dong").
- d. Press the arming button () on the remote control to arm the A1 Siren. You hear a short beep accompanied by one short flash of the LEDs.
- e. Now, move the magnet away from the first sensor. You hear the Chime sound and the red light on the sensor will light up. Repeat this procedure for all other window sensors.



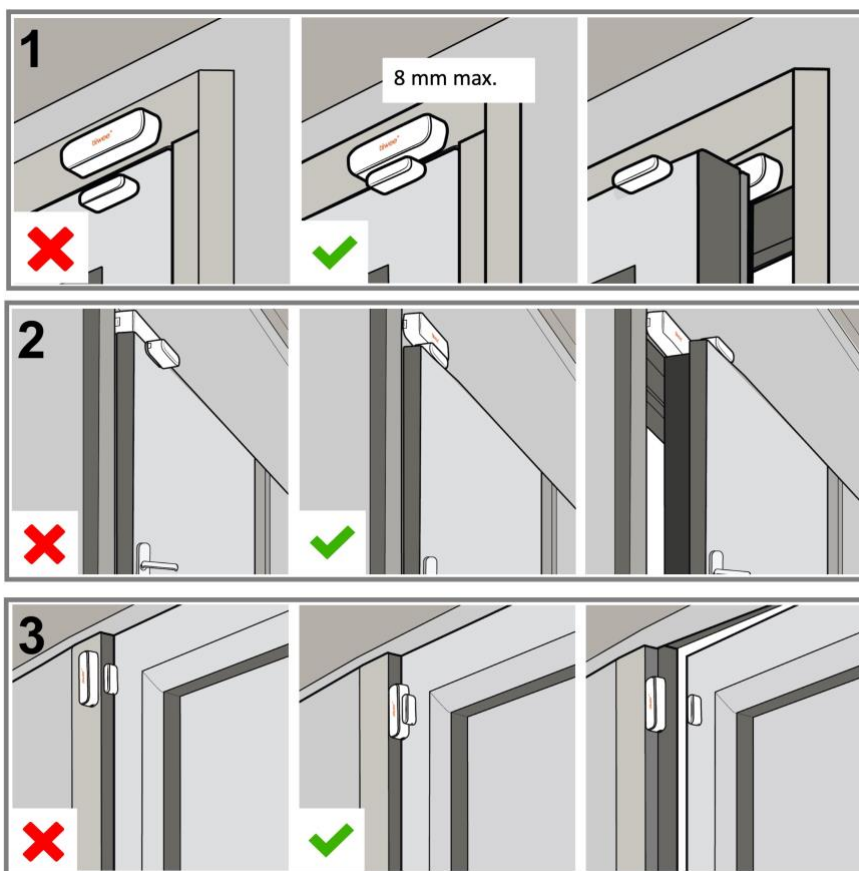
- f. Motion detector (PIR kits only): Wave your hand approximately 50 centimeters in front of the motion detector. You hear a Chime sound and the detection window of the detector will light up.

4. Installing your system

Disarm the A1 Siren using the disarm button on the remote control (). Now, mount the A1 Siren and window sensors following the instructions in the manual.

Once all components are mounted, activate the system: Select the “S” button on the remote control to choose the loud siren sound. Now, to activate your system press the arming button.

Installation examples for the door & window sensors



Important:

Please also refer to the user manual of the Tiiwee Home Alarm Kit. If you'd like to add more door sensors or motion detectors to your system, please refer to the support pages on our website to download pairing guides that will help you connect your accessories quickly and easily. Only use original tiiwee products to ensure compatibility.

Need assistance? Just send us an email at info@tiiwee.com. We solve any problem and usually respond within 12 hours.

Further support:

[Tiiwee.com support pages](#)

[Youtube](#)